



TEMPORARY ABANDONMENT WELL APPLICATION

OPERATOR: License# _____
 Name: _____
 Address 1: _____
 Address 2: _____
 City: _____ State: _____ Zip: _____ + _____
 Contact Person: _____
 Phone: (_____) _____
 Contact Person Email: _____
 Field Contact Person: _____
 Field Contact Person Phone: (_____) _____

API No. 15- _____
 Spot Description: _____
 _____ Sec. _____ Twp. _____ S. R. _____ E W
 _____ feet from N / S Line of Section
 _____ feet from E / W Line of Section
 GPS Location: Lat: _____, Long: _____
(e.g. xx.xxxxx) (e.g. -xxx.xxxxx)
 County: _____
 Lease Name: _____ Well #: _____
 Elevation: _____ GL KB
 Well Type: (check one) Oil Gas OG WSW Other: _____
 SWD Permit #: _____ ENHR Permit #: _____
 Gas Storage Permit #: _____
 Spud Date: _____ Date Shut-In: _____

| | Conductor | Surface | Production | Intermediate | Liner | Tubing |
|------------------|-----------|---------|------------|--------------|-------|--------|
| Size | | | | | | |
| Setting Depth | | | | | | |
| Amount of Cement | | | | | | |
| Top of Cement | | | | | | |
| Bottom of Cement | | | | | | |

Casing Fluid Level: _____ How Determined? _____ Date: _____
 Casing Squeeze(s): _____ to _____ w / _____ sacks of cement, _____ to _____ w / _____ sacks of cement. Date: _____
(top) (bottom) (top) (bottom)
 Do you have a valid Oil & Gas Lease? Yes No
 Depth and Type: Junk in Hole at _____ Tools in Hole at _____ Casing Leaks: Yes No Depth of casing leak(s): _____
(depth) (depth)
 Type Completion: ALT. I ALT. II Depth of: DV Tool: _____ w / _____ sacks of cement Port Collar: _____ w / _____ sack of cement
(depth) (depth)
 Packer Type: _____ Size: _____ Inch Set at: _____ Feet
 Total Depth: _____ Plug Back Depth: _____ Plug Back Method: _____

Geological Data:

| Formation Name | Formation Top | Formation Base | Completion Information |
|----------------|---------------|----------------|--|
| 1. _____ | At: _____ | to _____ Feet | Perforation Interval _____ to _____ Feet or Open Hole Interval _____ to _____ Feet |
| 2. _____ | At: _____ | to _____ Feet | Perforation Interval _____ to _____ Feet or Open Hole Interval _____ to _____ Feet |

Submitted Electronically

| | | | | | |
|--|----------------------------|-----------------|---|----------------------|---------------------------------|
| Do NOT Write in This Space - KCC USE ONLY | Date Tested: _____ | Results: _____ | Date Plugged: _____ | Date Repaired: _____ | Date Put Back in Service: _____ |
| | Review Completed by: _____ | Comments: _____ | TA Approved: Yes <input type="checkbox"/> Denied <input type="checkbox"/> | | |

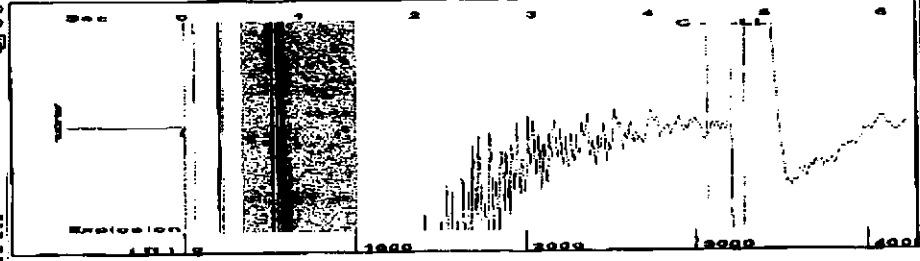
Mail to the Appropriate KCC Conservation Office:

| | | |
|--|--|--------------------|
| | KCC District Office #1 - 210 E. Frontview, Suite A, Dodge City, KS 67801 | Phone 620.225.8888 |
| | KCC District Office #2 - 3450 N. Rock Road, Building 600, Suite 601, Wichita, KS 67226 | Phone 316.630.4000 |
| | KCC District Office #3 - 1500 SW Seventh Steet, Chanute, KS 66720 | Phone 620.432.2300 |
| | KCC District Office #4 - 2301 E. 13th Street, Hays, KS 67601-2651 | Phone 785.625.0550 |
| | Underground Porosity Gas Storage (UPGS) 8200 E. 34th Street Circle N., Suite 1003, Wichita, KS 67226 | Phone 316.734.4933 |

Received Fax: 08/17/2012 18:27 FAX 820 584 2062 F G HOLL ELLINWOOD WICHITA

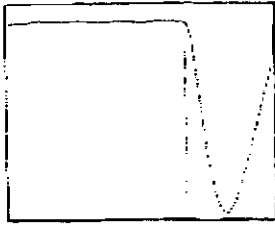
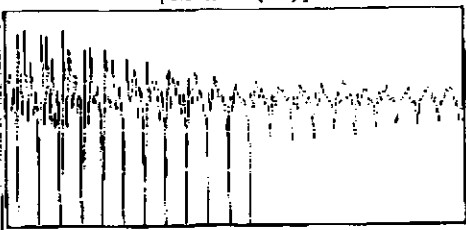
0003

Group: Belpre Well: Keller A 1-36 (acquired on: 06/15/12 15:52:34)



Filter Type High Pass Automatic Collar Count Yes Time 4.701 sec
 Manual Acoustic Vel 1372.29 ft/s Manual JTS/sec 21.645 Joints 101.276 Jts
 Depth 3210.46 ft

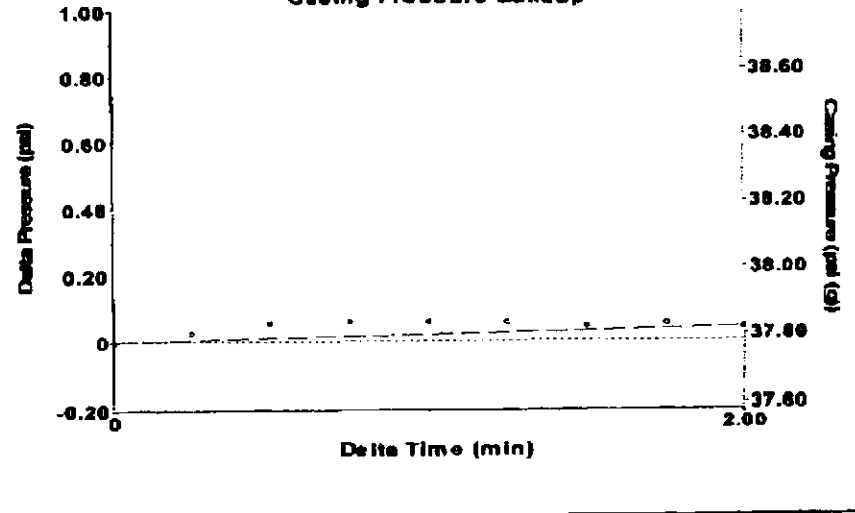
[0.5 to 1.5 (Sec)]



Analysis Method: Automatic

Group: Belpre Well: Keller A 1-36 (acquired on: 06/15/12 15:52:34)

Casing Pressure Buildup

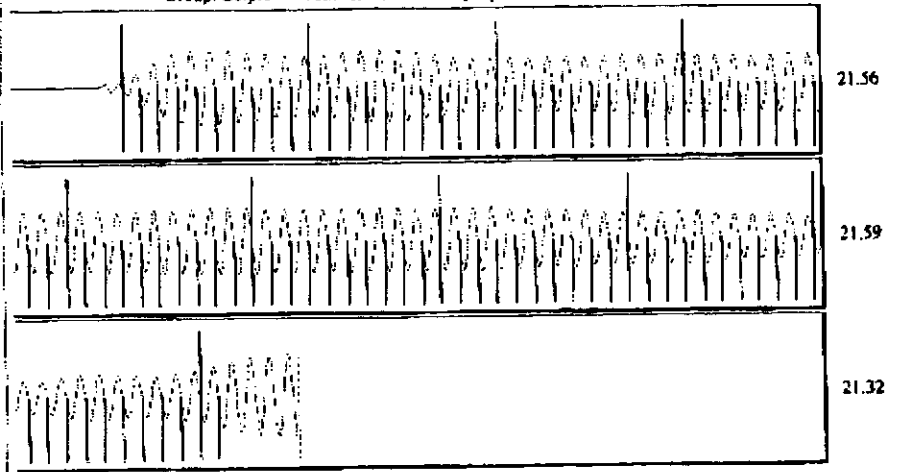


Change in Pressure 0.04 psi PTB493
 Change in Time 2.00 min Range 0-7 psi

Group: Belpre Well: Keller A 1-36 (acquired on: 06/15/12 15:52:34)

| | | |
|--|--|--|
| Production Current Potential Oil Water Gas DPR Method PBHP/SBHP Production Efficiency Oil 40 deg API Water 1.05 Sp.Gr.H2O Gas 0.64 Sp.Gr.AIR Acoustic Velocity 1365.86 ft/s Formation Submergence Total Gaseous Liquid Column HT (TVD) 1115 ft Equivalent Gas Free Liquid HT (TVD) 1110 ft Acoustic Test | Casing Pressure 37.8 psi (g) Casing Pressure Buildup 0.0 psi 2.00 min Gas/Liquid Interface Pressure 41.6 psi (g) Liquid Level Depth 3210.46 ft Pump Intake Depth 4325.00 ft Formation Depth 4258.00 ft Pump Intake 411.9 psi (g) Producing BHP 390.0 psi (g) Static BHP . . . psi (g) | Producing Annular Gas Flow 0 Mscf/D % Liquid 100 % |
|--|--|--|

Group: Belpre Well: Keller A 1-36 (acquired on: 06/15/12 15:52:34)



Acoustic Velocity 1365.86 ft/s Joints counted 91
 Joints Per Second 21.5436 Jts/sec Joints to liquid level 101.276
 Depth to liquid level 3210.46 ft Filter Width 19.645 23.645
 Automatic Collar Count Yes Time to 1st Collar 0.276 4.5