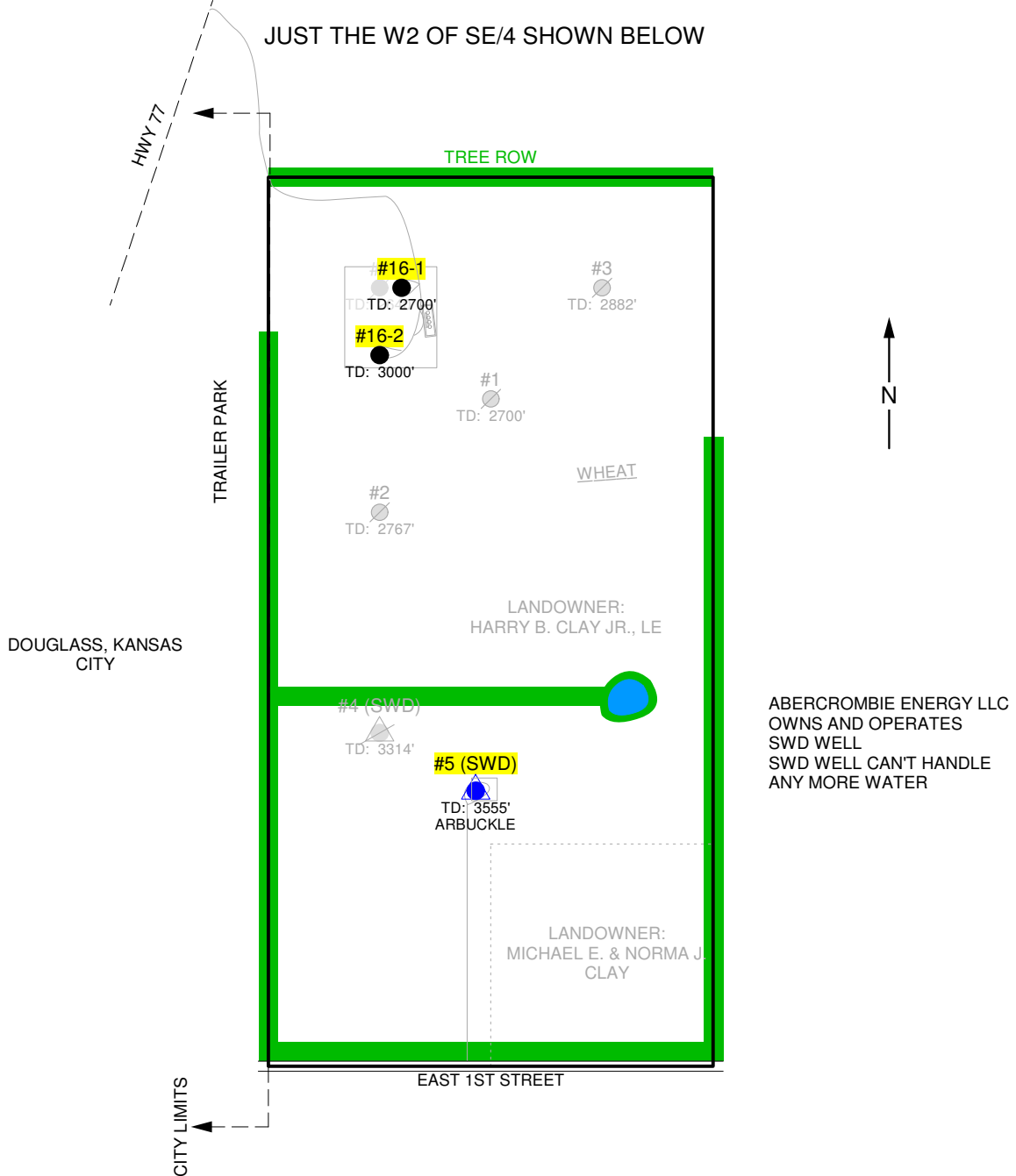


LASSO ENERGY LLC OPERATOR	ASMUSSEN LEASE	16-1 & 16-2 WELL NO.	12/21/2011 DATE
BUTLER COUNTY	KANSAS STATE	16 S 29S T	4E R



# LASSO ASMUSSEN LEASE

BUTLER COUNTY, KANSAS  
 16-T29S-R4E  
 W2 OF SE/4 -- 80.0 GROSS ACRES  
 64 NET ACRES  
 NRI: 80.0%  
 HELD BY PRODUCTION  
 SCALE: 1"=500'  
 OUTSIDE CITY LIMITS

- 3" PVC WATER DISPOSAL LINE
- 2" PVC LEAD (OIL & WATER) LINE
- LEASE ROAD