

Thomas J. Funk
Petroleum Geologist

Geologists' Report
Drilling Time and Sample Log

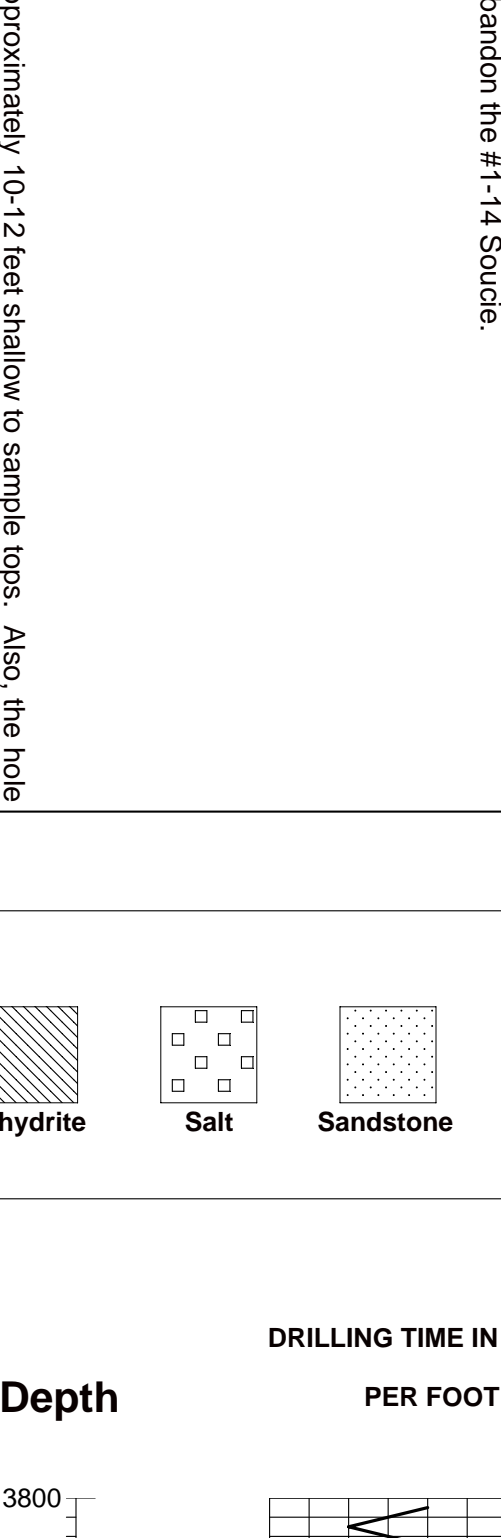
OPERATOR Murfin Drilling Co., Inc
WELL NO #1-14
LEASE Soucie
FIELD Field Ext
LOCATION 1100' FSL & 1800' FEL
SEC. 14 **TWP.** 10S **RGE.** 34W
COUNTY Thomas **STATE** Kansas

ELEVATION
KB 3213'
DF
GL 3200'
Measurements Are All From **KB**

CONTRACTOR Murfin Drilling Co. Rig #25
COMM 3/27/2012 **COMP** 4/5/2012
RTD 4/7/12 **LOG TD** 4706'
SAMPLES SAVED FROM 3800 TO TD
DRILLING TIME KEPT FROM 3800 TO TD
SAMPLES EXAMINED FROM 3800 TO TD

GEOLOGICAL SUPERVISION FROM 3840 TO TD
MUD/UP 3500
TYPE MUD Chemical

FORMATION	LOG TOP DATUM	SAMPLE TOP DATUM	STRUCT COMP
Anhydrite	2728 (-495)	2737 (-476)	-5
Barytyrite	2756 (-457)	2764 (-449)	-5
Topexka	3892 (-679)	3903 (-690)	-7
Heebner Sh	4109 (-896)	4123 (-910)	-11
Lansing	4150 (-937)	4162 (-949)	-10
Murde Creek	4294 (-1081)	4306 (-1093)	-10
Stark Sh	4379 (-1166)	4395 (-1182)	-10
Marmaton	4461 (-1248)	4471 (-1258)	-11
Pawnee	4579 (-1366)	4590 (-1377)	-16
Cherokee Sh	4665 (-1452)	4677 (-1464)	-16
Johnson Zone	NDE	4720 (-1507)	-20
Mississippi	NDE	NDE	

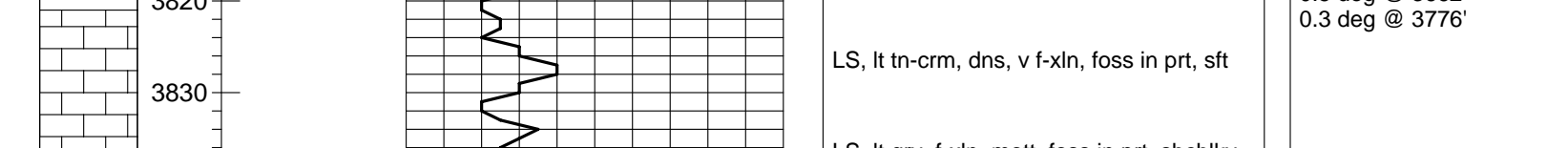


REFERENCE WELL FOR STRUCTURAL COMPARISON: Murfin Drilling Co. #1-14 Soucie Seale Unit
1950' FNL & 1990' FEL sec. 14-10S-34W, Thomas Co. KS

Daily Progress	NO. Size	Make	Type	Depth Out	Feet	Hours
3/27/12	1	12 1/4" GMS	RR	269	269	3
3/28/12	2	7 7/8" HTC	DP906F	3662	3393	40 1/4
3/29/12	2	7 7/8" HTC	DP906F	4740	1078	56 1/2
3/30/12	3	7 7/8" HTC	GX22s			
3/31/12						
4/1/12						
4/2/12						
4/3/12						
4/4/12						
4/5/12						

Remarks And Recommendations:
Based upon log analysis, DST recovery, and sample examination, it was decided to plug and abandon the #1-14 Soucie.
Thomas Funk
Petroleum Geologist

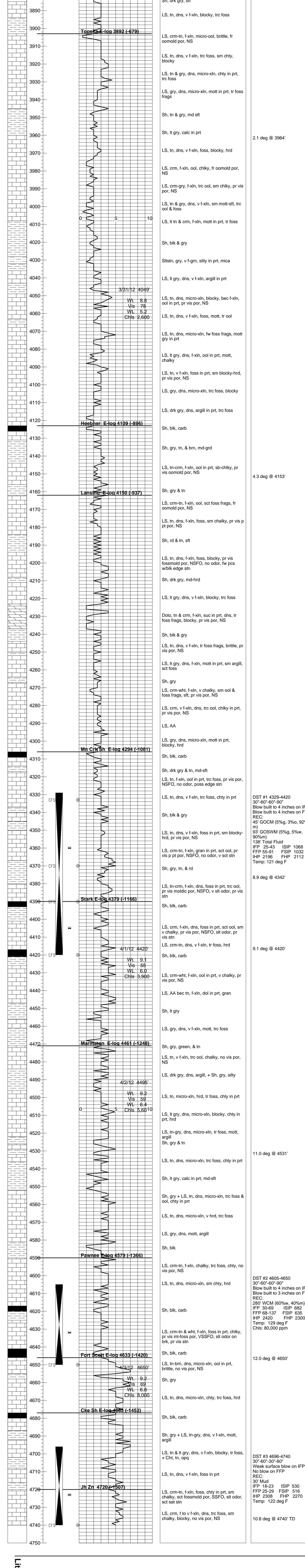
LEGEND



DRILLING TIME IN MINUTES PER FOOT

Sample Descriptions

Remarks



DRILLING TIME IN MINUTES PER FOOT

Sample Descriptions

Remarks

COMPANY Murfin Drilling Co., Inc **ELEVATION** 3213' **KB**

LEASE #1-14 **Soucie**

LOCATION 1100' FSL & 1800' FEL **Sec** 14 **TWP** 10S **RGE** 34W

COUNTY Thomas **STATE** Kansas