



## DRILL STEM TEST REPORT

Prepared For: **Murfin Drilling Co.**

250 N. Water STE 300  
Wichita, KS 67202

ATTN: Mike Maune

### **Shaw #1-29**

#### **29-5s-30w Decatur,KS**

Start Date: 2012.03.15 @ 17:26:00

End Date: 2012.03.16 @ 00:25:45

Job Ticket #: 45622                      DST #: 1

Trilobite Testing, Inc  
PO Box 362 Hays, KS 67601  
ph: 785-625-4778 fax: 785-625-5620

Printed: 2012.03.21 @ 15:00:10



**TRILOBITE TESTING, INC.**

# DRILL STEM TEST REPORT

Murfin Drilling Co.  
 250 N. Water STE 300  
 Wichita, KS 67202  
 ATTN: Mike Maune

**29-5s-30w Decatur, KS**  
**Shaw #1-29**  
 Job Ticket: 45622      **DST#: 1**  
 Test Start: 2012.03.15 @ 17:26:00

## GENERAL INFORMATION:

Formation: **Toronto - LKC "A,B"**  
 Deviated: No Whipstock: ft (KB)  
 Time Tool Opened: 19:35:00  
 Time Test Ended: 00:25:45  
 Interval: **3906.00 ft (KB) To 3988.00 ft (KB) (TVD)**  
 Total Depth: 3988.00 ft (KB) (TVD)  
 Hole Diameter: 7.88 inches Hole Condition: Good  
 Test Type: Conventional Bottom Hole (Initial)  
 Tester: Kevin Mack  
 Unit No: 43  
 Reference Elevations: 2926.00 ft (KB)  
 2921.00 ft (CF)  
 KB to GR/CF: 5.00 ft

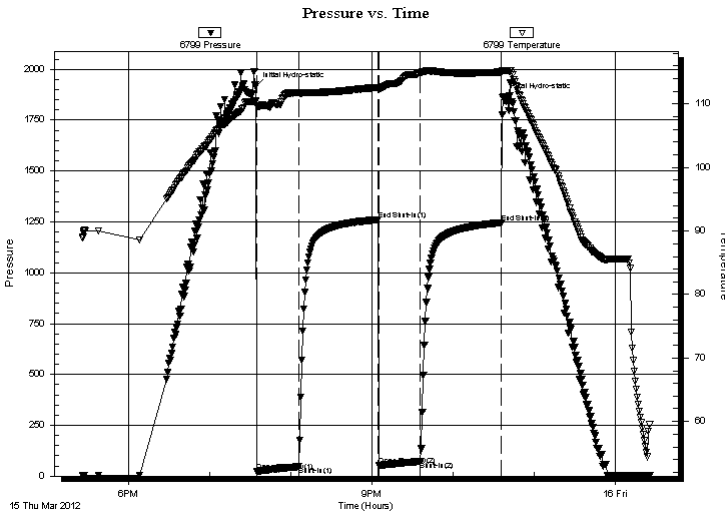
## Serial #: 6799

Inside

Press @ Run Depth: 73.45 psig @ 3907.00 ft (KB)      Capacity: 8000.00 psig  
 Start Date: 2012.03.15      End Date: 2012.03.16      Last Calib.: 2012.03.16  
 Start Time: 17:26:05      End Time: 00:25:44      Time On Btm: 2012.03.15 @ 19:34:15  
 Time Off Btm: 2012.03.15 @ 22:36:45

TEST COMMENT: IF- Weak Surface blow built to 1/2"  
 IS- No Return  
 FF- No Blow  
 FS- No Return

## PRESSURE SUMMARY



Time (Min.)	Pressure (psig)	Temp (deg F)	Annotation
0	1915.28	110.40	Initial Hydro-static
1	22.51	109.79	Open To Flow (1)
32	47.92	111.75	Shut-In(1)
90	1260.23	112.63	End Shut-In(1)
91	51.83	112.37	Open To Flow (2)
122	73.45	114.96	Shut-In(2)
182	1245.71	115.04	End Shut-In(2)
183	1860.77	115.29	Final Hydro-static

## Recovery

Length (ft)	Description	Volume (bbl)
60.00	OSM 100M (oil spots)	0.30

## Gas Rates

Choke (inches)	Pressure (psig)	Gas Rate (Mcf/d)





**TRILOBITE  
TESTING, INC.**

# DRILL STEM TEST REPORT

**TOOL DIAGRAM**

Murfin Drilling Co.

**29-5s-30w Decatur, KS**

250 N. Water STE 300  
Wichita, KS 67202

**Shaw #1-29**

Job Ticket: 45622

**DST#: 1**

ATTN: Mike Maune

Test Start: 2012.03.15 @ 17:26:00

## Tool Information

Drill Pipe:	Length: 3703.00 ft	Diameter: 3.80 inches	Volume: 51.94 bbl	Tool Weight: 2500.00 lb
Heavy Wt. Pipe:	Length: 0.00 ft	Diameter: 0.00 inches	Volume: 0.00 bbl	Weight set on Packer: 25000.00 lb
Drill Collar:	Length: 180.00 ft	Diameter: 2.25 inches	Volume: 0.89 bbl	Weight to Pull Loose: 72000.00 lb
			<u>Total Volume: 52.83 bbl</u>	Tool Chased 0.00 ft
Drill Pipe Above KB:	6.00 ft			String Weight: Initial 65000.00 lb
Depth to Top Packer:	3906.00 ft			Final 65000.00 lb
Depth to Bottom Packer:	ft			
Interval between Packers:	82.00 ft			
Tool Length:	111.00 ft			
Number of Packers:	2	Diameter: 6.75 inches		

Tool Comments:

## Tool Description

Tool Description	Length (ft)	Serial No.	Position	Depth (ft)	Accum. Lengths
Change Over Sub	1.00			3878.00	
Shut In Tool	5.00			3883.00	
Hydraulic tool	5.00			3888.00	
Jars	5.00			3893.00	
Safety Joint	3.00			3896.00	
Packer	5.00			3901.00	29.00 Bottom Of Top Packer
Packer	5.00			3906.00	
Stubb	1.00			3907.00	
Recorder	0.00	8648	Inside	3907.00	
Recorder	0.00	6799	Inside	3907.00	
Perforations	12.00			3919.00	
Change Over Sub	1.00			3920.00	
Drill Pipe	62.00			3982.00	
Change Over Sub	1.00			3983.00	
Bullnose	5.00			3988.00	82.00 Bottom Packers & Anchor

**Total Tool Length: 111.00**



**TRILOBITE  
TESTING, INC.**

# DRILL STEM TEST REPORT

**FLUID SUMMARY**

Murfin Drilling Co.

**29-5s-30w Decatur,KS**

250 N. Water STE 300  
Wichita, KS 67202

**Shaw #1-29**

Job Ticket: 45622

**DST#: 1**

ATTN: Mike Maune

Test Start: 2012.03.15 @ 17:26:00

## Mud and Cushion Information

Mud Type: Gel Chem

Cushion Type:

Oil API:

deg API

Mud Weight: 9.00 lb/gal

Cushion Length:

ft

Water Salinity:

ppm

Viscosity: 52.00 sec/qt

Cushion Volume:

bbbl

Water Loss: 5.57 in<sup>3</sup>

Gas Cushion Type:

Resistivity: 0.00 ohm.m

Gas Cushion Pressure:

psig

Salinity: 800.00 ppm

Filter Cake: 1.00 inches

## Recovery Information

Recovery Table

Length ft	Description	Volume bbl
60.00	OSM 100M (oil spots)	0.295

Total Length: 60.00 ft      Total Volume: 0.295 bbl

Num Fluid Samples: 0

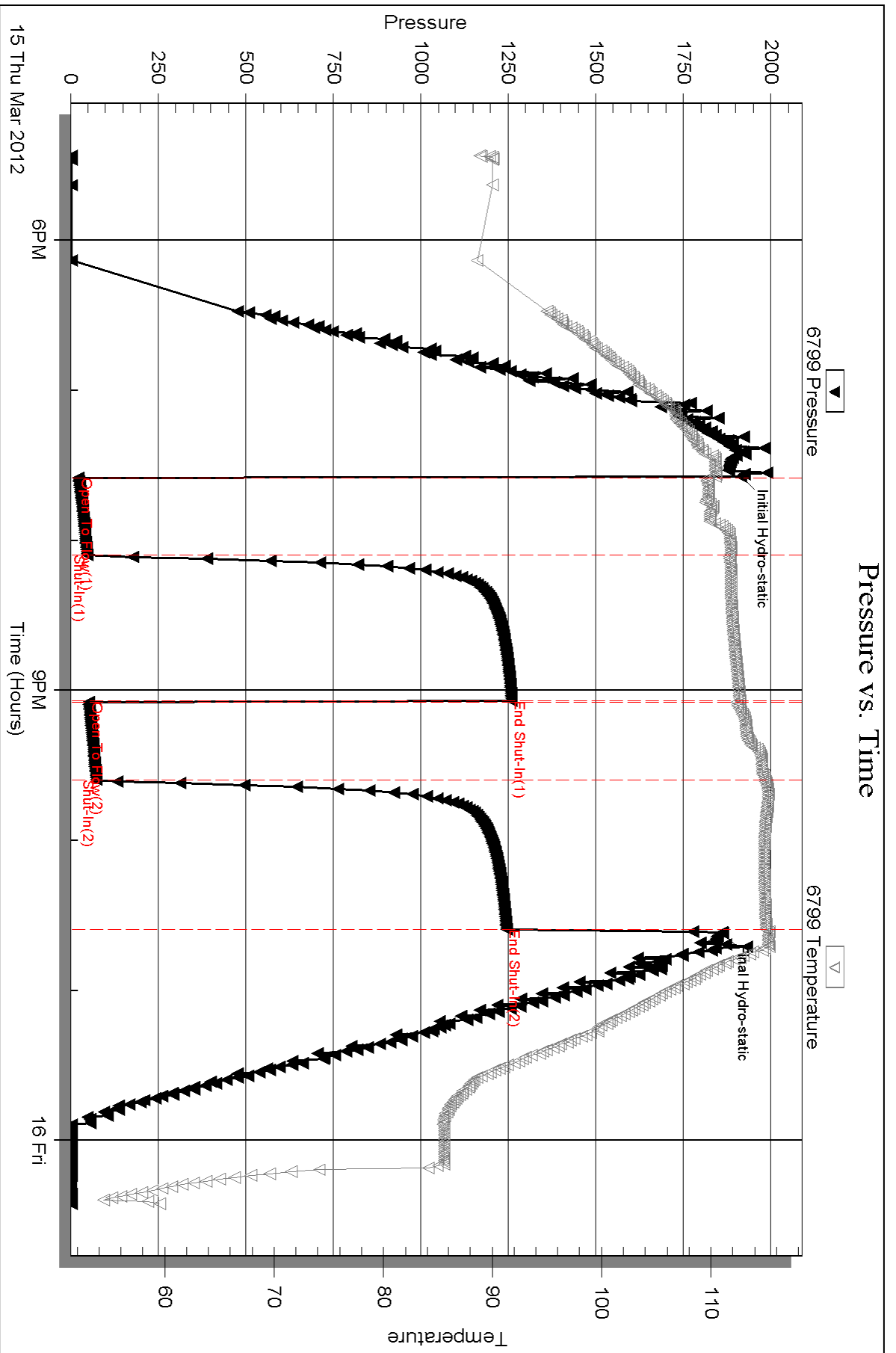
Num Gas Bombs: 0

Serial #:

Laboratory Name:

Laboratory Location:

Recovery Comments:



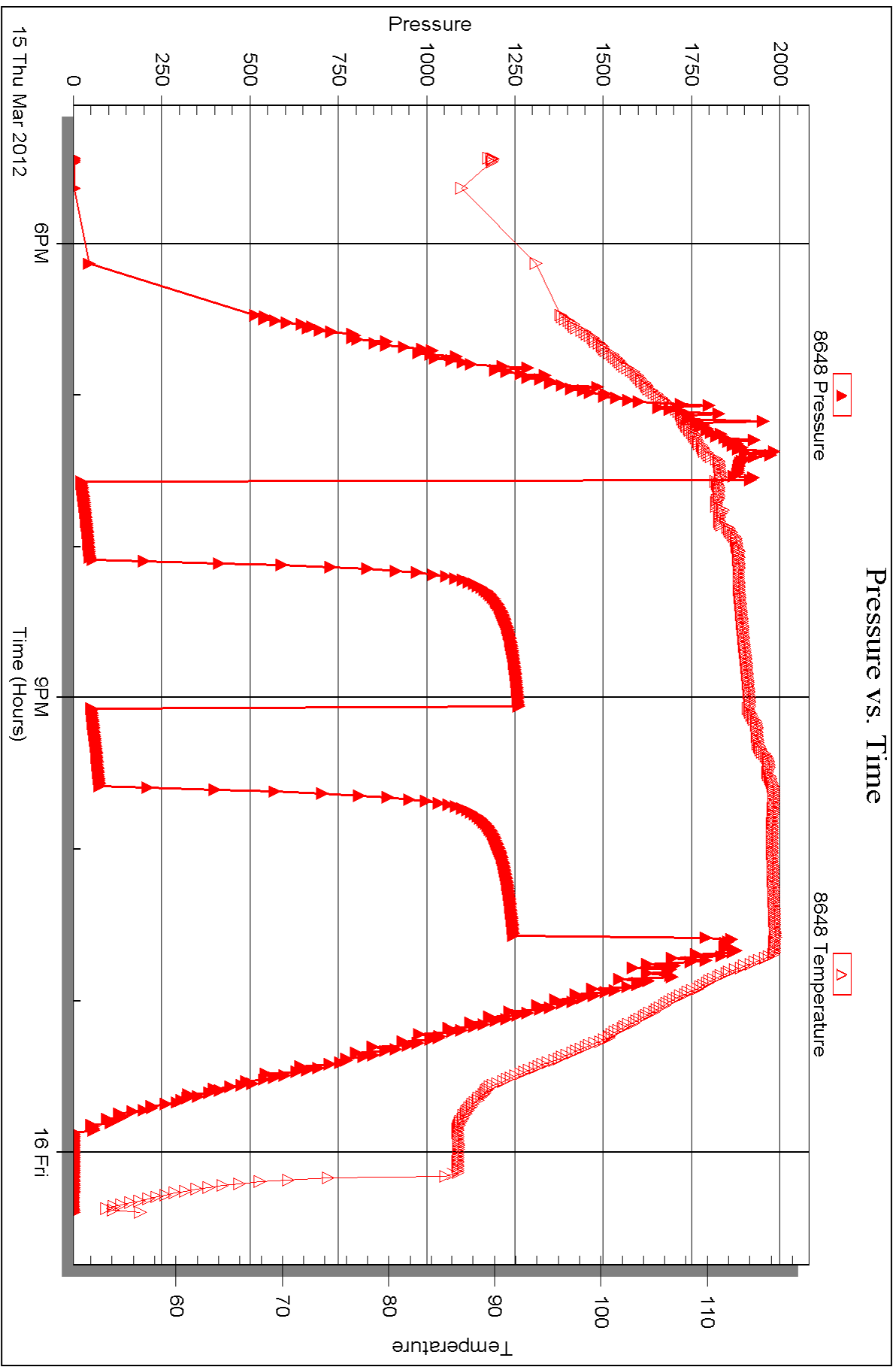
Serial #: 8648

Inside

Murfin Drilling Co.

Shaw #1-29

DST Test Number: 1





## DRILL STEM TEST REPORT

Prepared For: **Murfin Drilling Co.**

250 N. Water STE 300  
Wichita, KS 67202

ATTN: Mike Maune

### **Shaw #1-29**

#### **29-5s-30w Decatur,KS**

Start Date: 2012.03.16 @ 10:32:00

End Date: 2012.03.16 @ 17:51:30

Job Ticket #: 45623                      DST #: 2

Trilobite Testing, Inc  
PO Box 362 Hays, KS 67601  
ph: 785-625-4778 fax: 785-625-5620

Printed: 2012.03.21 @ 14:58:09





**TRILOBITE  
TESTING, INC.**

# DRILL STEM TEST REPORT

Murfin Drilling Co.  
250 N. Water STE 300  
Wichita, KS 67202  
ATTN: Mike Maune

**29-5s-30w Decatur, KS**  
**Shaw #1-29**  
Job Ticket: 45623      **DST#: 2**  
Test Start: 2012.03.16 @ 10:32:00

## GENERAL INFORMATION:

Formation: **LKC "F"**  
 Deviated: No Whipstock: ft (KB)  
 Test Type: Conventional Bottom Hole (Initial)  
 Time Tool Opened: 13:07:45  
 Tester: Kevin Mack  
 Time Test Ended: 17:51:30  
 Unit No: 43  
 Interval: **4009.00 ft (KB) To 4025.00 ft (KB) (TVD)**  
 Reference Elevations: 2926.00 ft (KB)  
 Total Depth: 4025.00 ft (KB) (TVD)      2921.00 ft (CF)  
 Hole Diameter: 7.88 inches  
 Hole Condition: Good      KB to GR/CF: 5.00 ft

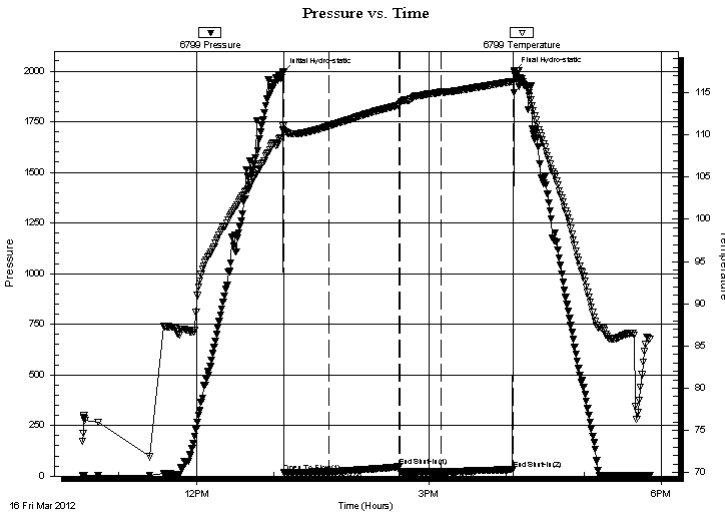
## Serial #: 6799

Inside

Press @ Run Depth: 20.76 psig @ 4010.00 ft (KB)      Capacity: 8000.00 psig  
 Start Date: 2012.03.16      End Date: 2012.03.16      Last Calib.: 2012.03.18  
 Start Time: 10:32:05      End Time: 17:51:29      Time On Btm: 2012.03.16 @ 13:07:15  
 Time Off Btm: 2012.03.16 @ 16:06:00

TEST COMMENT: IF- Weak surface blow built to 1/8"  
 IS- No Return  
 FF- No Blow  
 FS- No Return

## PRESSURE SUMMARY



Time (Min.)	Pressure (psig)	Temp (deg F)	Annotation
0	1994.38	111.05	Initial Hydro-static
1	18.42	110.51	Open To Flow (1)
36	20.90	111.08	Shut-In(1)
90	46.32	113.55	End Shut-In(1)
91	20.75	113.68	Open To Flow (2)
123	20.76	115.10	Shut-In(2)
178	32.67	116.35	End Shut-In(2)
179	1995.79	117.62	Final Hydro-static

## Recovery

Length (ft)	Description	Volume (bbl)
5.00	OSM 100M (oil spots)	0.02

## Gas Rates

Choke (inches)	Pressure (psig)	Gas Rate (Mcf/d)





**TRILOBITE  
TESTING, INC.**

# DRILL STEM TEST REPORT

**TOOL DIAGRAM**

Murfin Drilling Co.

**29-5s-30w Decatur,KS**

250 N. Water STE 300  
Wichita, KS 67202

**Shaw #1-29**

Job Ticket: 45623

**DST#: 2**

ATTN: Mike Maune

Test Start: 2012.03.16 @ 10:32:00

## Tool Information

Drill Pipe:	Length: 3826.00 ft	Diameter: 3.80 inches	Volume: 53.67 bbl	Tool Weight: 2500.00 lb
Heavy Wt. Pipe:	Length: 0.00 ft	Diameter: 0.00 inches	Volume: 0.00 bbl	Weight set on Packer: 25000.00 lb
Drill Collar:	Length: 180.00 ft	Diameter: 2.25 inches	Volume: 0.89 bbl	Weight to Pull Loose: 68000.00 lb
			<u>Total Volume: 54.56 bbl</u>	Tool Chased ft
Drill Pipe Above KB:	26.00 ft			String Weight: Initial 62000.00 lb
Depth to Top Packer:	4009.00 ft			Final 62000.00 lb
Depth to Bottom Packer:	ft			
Interval between Packers:	16.00 ft			
Tool Length:	45.00 ft			
Number of Packers:	2	Diameter: 6.75 inches		

Tool Comments:

Tool Description	Length (ft)	Serial No.	Position	Depth (ft)	Accum. Lengths
------------------	-------------	------------	----------	------------	----------------

Change Over Sub	1.00			3981.00	
Shut In Tool	5.00			3986.00	
Hydraulic tool	5.00			3991.00	
Jars	5.00			3996.00	
Safety Joint	3.00			3999.00	
Packer	5.00			4004.00	29.00 Bottom Of Top Packer
Packer	5.00			4009.00	
Stubb	1.00			4010.00	
Recorder	0.00	8648	Inside	4010.00	
Recorder	0.00	6799	Inside	4010.00	
Perforations	10.00			4020.00	
Bullnose	5.00			4025.00	16.00 Bottom Packers & Anchor

**Total Tool Length: 45.00**



**TRILOBITE  
TESTING, INC.**

# DRILL STEM TEST REPORT

**FLUID SUMMARY**

Murfin Drilling Co.

**29-5s-30w Decatur,KS**

250 N. Water STE 300  
Wichita, KS 67202

**Shaw #1-29**

Job Ticket: 45623

**DST#: 2**

ATTN: Mike Maune

Test Start: 2012.03.16 @ 10:32:00

## Mud and Cushion Information

Mud Type: Gel Chem

Cushion Type:

Oil API:

deg API

Mud Weight: 9.00 lb/gal

Cushion Length:

ft

Water Salinity:

ppm

Viscosity: 49.00 sec/qt

Cushion Volume:

bbbl

Water Loss: 5.98 in<sup>3</sup>

Gas Cushion Type:

Resistivity: 0.00 ohm.m

Gas Cushion Pressure:

psig

Salinity: 800.00 ppm

Filter Cake: 2.00 inches

## Recovery Information

Recovery Table

Length ft	Description	Volume bbl
5.00	OSM 100M (oil spots)	0.025

Total Length: 5.00 ft      Total Volume: 0.025 bbl

Num Fluid Samples: 0

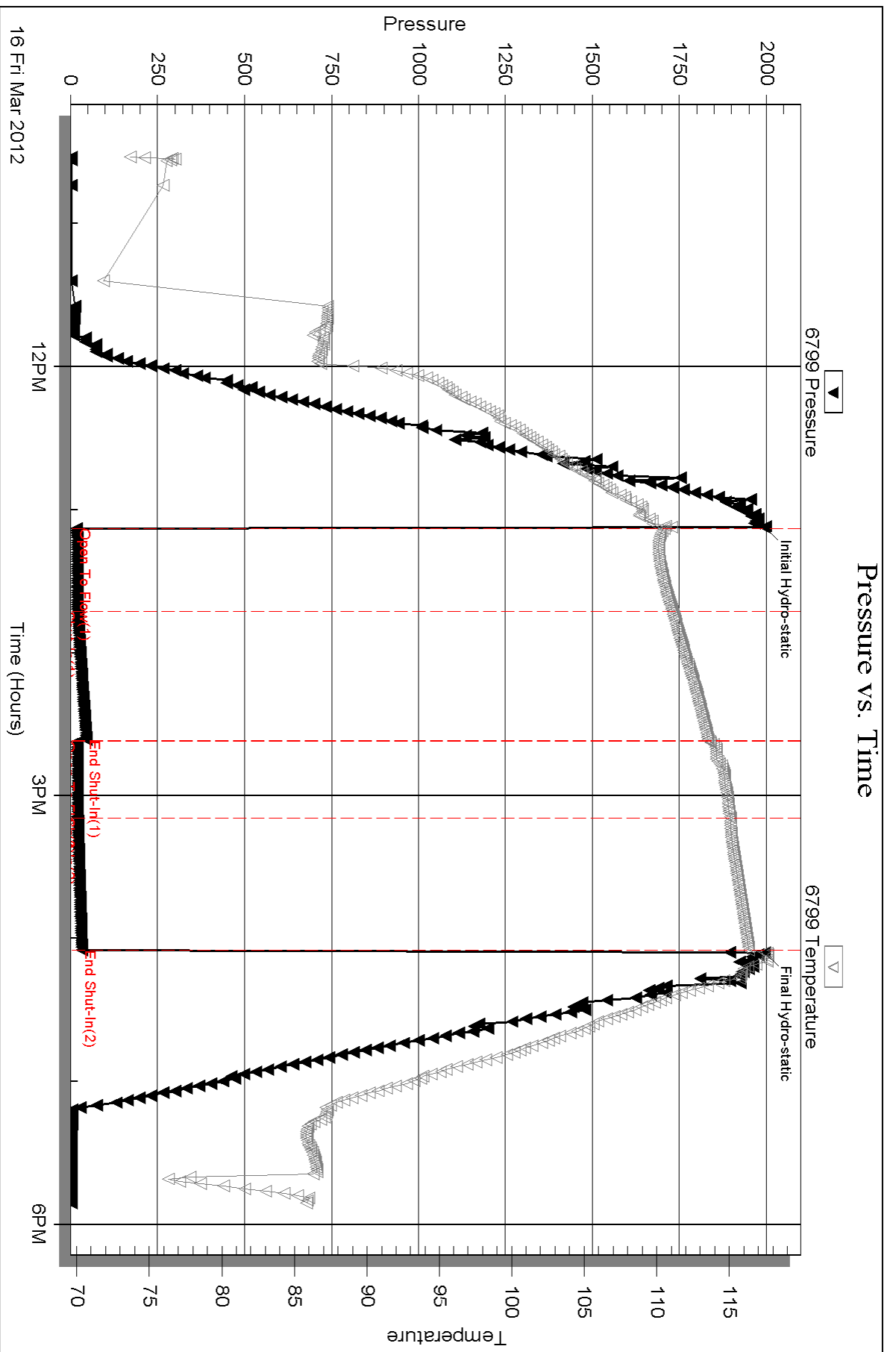
Num Gas Bombs: 0

Serial #:

Laboratory Name:

Laboratory Location:

Recovery Comments:



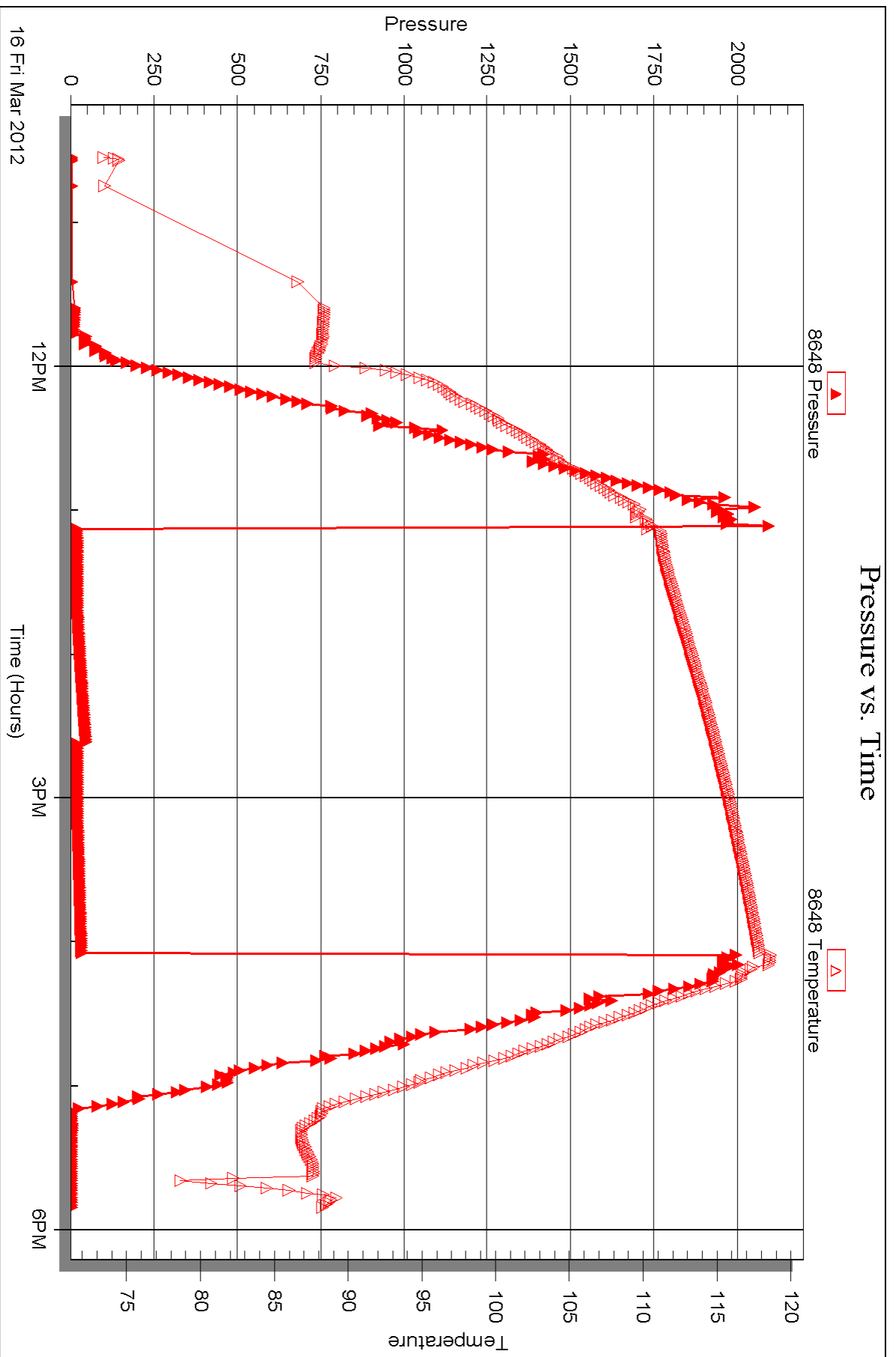
Serial #: 8648

Inside

Murfin Drilling Co.

Shaw #1-29

DST Test Number: 2



Triobite Testing, Inc

Ref. No: 45623

Printed: 2012.03.21 @ 14:58:11



## DRILL STEM TEST REPORT

Prepared For: **Murfin Drilling Co.**

250 N. Water STE 300  
Wichita, KS 67202

ATTN: Mike Maune

### **Shaw #1-29**

#### **29-5s-30w Decatur,KS**

Start Date: 2012.03.17 @ 08:50:00

End Date: 2012.03.17 @ 16:47:15

Job Ticket #: 45624                      DST #: 3

Trilobite Testing, Inc  
PO Box 362 Hays, KS 67601  
ph: 785-625-4778 fax: 785-625-5620

Printed: 2012.03.21 @ 14:56:08







**TRILLOBITE  
TESTING, INC.**

# DRILL STEM TEST REPORT

Murfin Drilling Co.

29-5s-30w Decatur, KS

250 N. Water STE 300  
Wichita, KS 67202

**Shaw #1-29**

Job Ticket: 45624

**DST#: 3**

ATTN: Mike Maune

Test Start: 2012.03.17 @ 08:50:00

## GENERAL INFORMATION:

Formation: **LKC "J"**  
 Deviated: No Whipstock: ft (KB) Test Type: Conventional Bottom Hole (Initial)  
 Time Tool Opened: 11:46:45 Tester: Kevin Mack  
 Time Test Ended: 16:47:15 Unit No: 43  
**Interval: 4084.00 ft (KB) To 4124.00 ft (KB) (TVD)** Reference Elevations: 2926.00 ft (KB)  
 Total Depth: 4124.00 ft (KB) (TVD) 2921.00 ft (CF)  
 Hole Diameter: 7.88 inches Hole Condition: Good KB to GR/CF: 5.00 ft

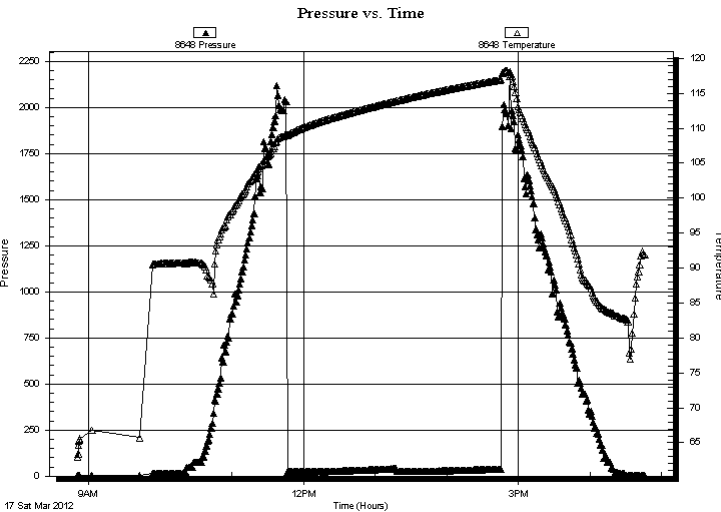
## Serial #: 8648

Inside

Press @ Run Depth:	psig @	4085.00 ft (KB)	Capacity:	8000.00 psig	
Start Date:	2012.03.17	End Date:	2012.03.17	Last Calib.:	2012.03.17
Start Time:	08:50:50	End Time:	16:46:14	Time On Btm:	
				Time Off Btm:	

**TEST COMMENT:** IF- Weak Surface blow built to 1/4"  
 IS- No Return  
 FF- No Blow  
 FS- No Return

## PRESSURE SUMMARY



Time (Min.)	Pressure (psig)	Temp (deg F)	Annotation

## Recovery

## Gas Rates

Length (ft)	Description	Volume (bbl)
5.00	Mud 100M	0.02

Choke (inches)	Pressure (psig)	Gas Rate (Mcf/d)



**TRILOBITE  
TESTING, INC.**

# DRILL STEM TEST REPORT

**TOOL DIAGRAM**

Murfin Drilling Co.

**29-5s-30w Decatur,KS**

250 N. Water STE 300  
Wichita, KS 67202

**Shaw #1-29**

Job Ticket: 45624

**DST#: 3**

ATTN: Mike Maune

Test Start: 2012.03.17 @ 08:50:00

## Tool Information

Drill Pipe:	Length: 3890.00 ft	Diameter: 3.80 inches	Volume: 54.57 bbl	Tool Weight:	2500.00 lb
Heavy Wt. Pipe:	Length: ft	Diameter: 0.00 inches	Volume: 0.00 bbl	Weight set on Packer:	25000.00 lb
Drill Collar:	Length: 180.00 ft	Diameter: 2.25 inches	Volume: 0.89 bbl	Weight to Pull Loose:	70000.00 lb
			<u>Total Volume: 55.46 bbl</u>	Tool Chased	0.00 ft
Drill Pipe Above KB:	15.00 ft			String Weight: Initial	65000.00 lb
Depth to Top Packer:	4084.00 ft			Final	65000.00 lb
Depth to Bottom Packer:	ft				
Interval between Packers:	40.00 ft				
Tool Length:	69.00 ft				
Number of Packers:	2	Diameter: 6.75 inches			

Tool Comments:

## Tool Description

Tool Description	Length (ft)	Serial No.	Position	Depth (ft)	Accum. Lengths
Change Over Sub	1.00			4056.00	
Shut In Tool	5.00			4061.00	
Hydraulic tool	5.00			4066.00	
Jars	5.00			4071.00	
Safety Joint	3.00			4074.00	
Packer	5.00			4079.00	29.00 Bottom Of Top Packer
Packer	5.00			4084.00	
Stubb	1.00			4085.00	
Recorder	0.00	8648	Inside	4085.00	
Recorder	0.00	6799	Inside	4085.00	
Perforations	3.00			4088.00	
Change Over Sub	1.00			4089.00	
Drill Pipe	31.00			4120.00	
Change Over Sub	1.00			4121.00	
Bullnose	3.00			4124.00	40.00 Bottom Packers & Anchor

**Total Tool Length: 69.00**



**TRILOBITE  
TESTING, INC.**

# DRILL STEM TEST REPORT

**FLUID SUMMARY**

Murfin Drilling Co.

**29-5s-30w Decatur,KS**

250 N. Water STE 300  
Wichita, KS 67202

**Shaw #1-29**

Job Ticket: 45624

**DST#: 3**

ATTN: Mike Maune

Test Start: 2012.03.17 @ 08:50:00

## Mud and Cushion Information

Mud Type: Gel Chem

Cushion Type:

Oil API:

deg API

Mud Weight: 9.00 lb/gal

Cushion Length:

ft

Water Salinity:

ppm

Viscosity: 49.00 sec/qt

Cushion Volume:

bbbl

Water Loss: 5.98 in<sup>3</sup>

Gas Cushion Type:

Resistivity: 0.00 ohm.m

Gas Cushion Pressure:

psig

Salinity: 800.00 ppm

Filter Cake: 2.00 inches

## Recovery Information

Recovery Table

Length ft	Description	Volume bbl
5.00	Mud 100M	0.025

Total Length: 5.00 ft      Total Volume: 0.025 bbl

Num Fluid Samples: 0

Num Gas Bombs: 0

Serial #:

Laboratory Name:

Laboratory Location:

Recovery Comments:

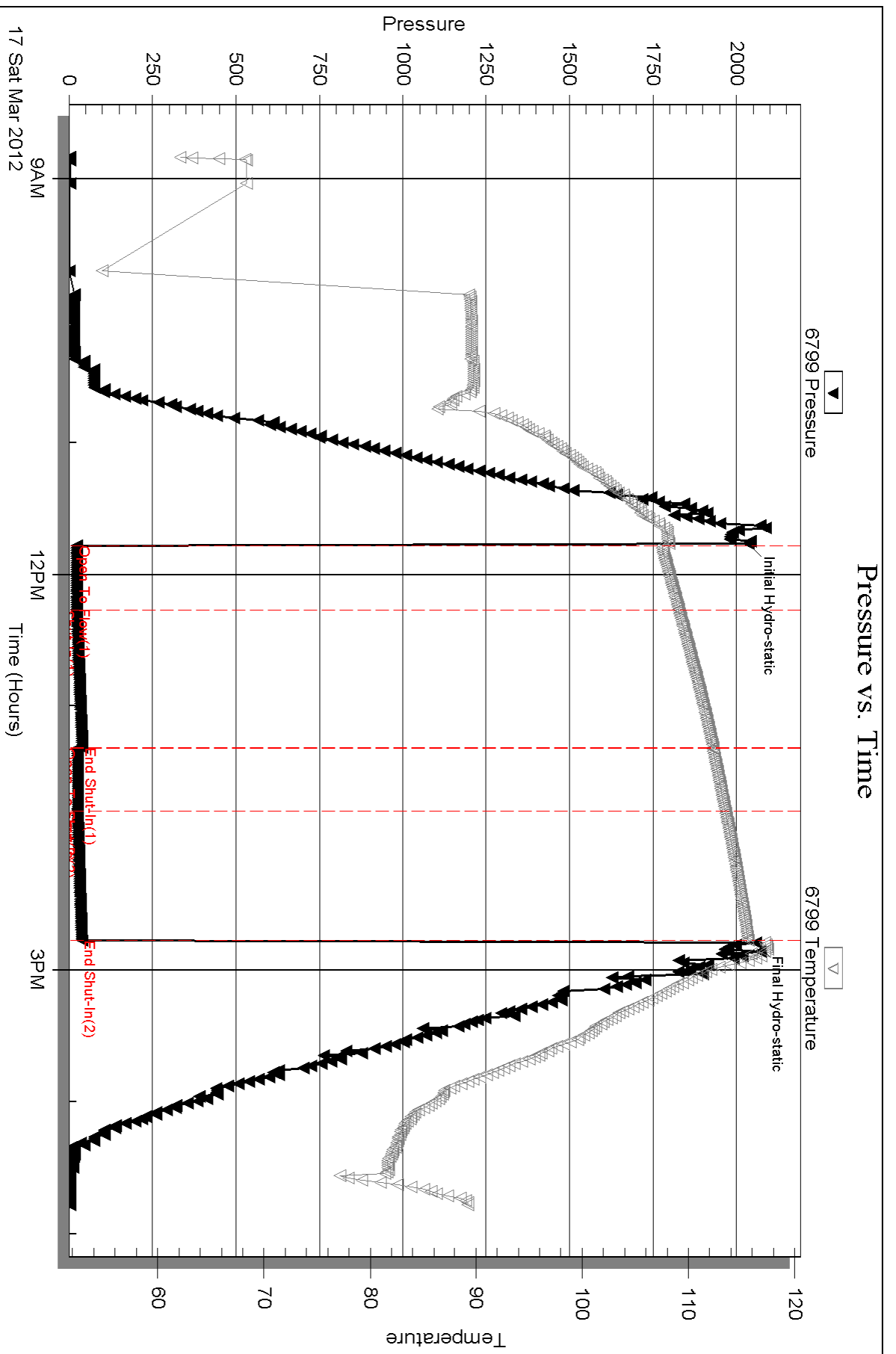
Serial #: 6799

Inside

Murfin Drilling Co.

Shaw #1-29

DST Test Number: 3



Triobite Testing, Inc

Ref. No: 45624

Printed: 2012.03.21 @ 14:56:10

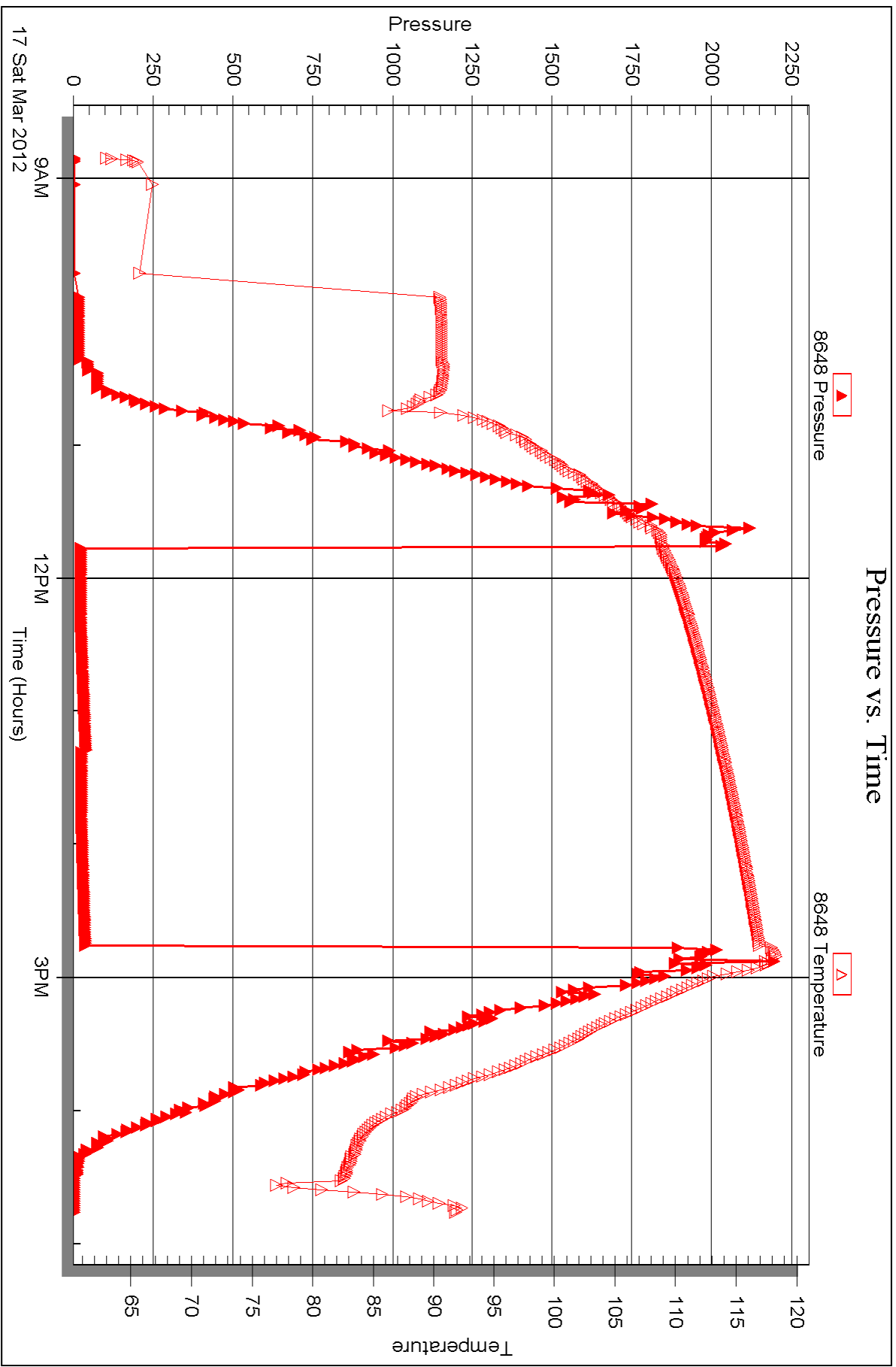
Serial #: 8648

Inside

Murfin Drilling Co.

Shaw #1-29

DST Test Number: 3



Triobite Testing, Inc

Ref. No: 45624

Printed: 2012.03.21 @ 14:56:13



## DRILL STEM TEST REPORT

Prepared For: **Murfin Drilling Co.**

250 N. Water STE 300  
Wichita, KS 67202

ATTN: Mike Maune

### **Shaw #1-29**

#### **29-5s-30w Decatur,KS**

Start Date: 2012.03.18 @ 04:22:00

End Date: 2012.03.18 @ 12:52:00

Job Ticket #: 46101                      DST #: 4

Trilobite Testing, Inc  
PO Box 362 Hays, KS 67601  
ph: 785-625-4778 fax: 785-625-5620

Printed: 2012.03.21 @ 14:54:47



**TRILOBITE  
TESTING, INC.**

# DRILL STEM TEST REPORT

Murfin Drilling Co.  
250 N. Water STE 300  
Wichita, KS 67202  
ATTN: Mike Maune

**29-5s-30w Decatur, KS**  
**Shaw #1-29**  
Job Ticket: 46101      **DST#: 4**  
Test Start: 2012.03.18 @ 04:22:00

## GENERAL INFORMATION:

Formation: **LKC "K-L"**  
Deviated: No Whipstock: ft (KB)  
Time Tool Opened: 07:42:45  
Time Test Ended: 12:52:00  
Test Type: Conventional Bottom Hole (Initial)  
Tester: Kevin Mack  
Unit No: 43  
Interval: **4118.00 ft (KB) To 4180.00 ft (KB) (TVD)**  
Reference Elevations: 2926.00 ft (KB)  
Total Depth: 4180.00 ft (KB) (TVD)      2921.00 ft (CF)  
Hole Diameter: 7.88 inches Hole Condition: Good      KB to GR/CF: 5.00 ft

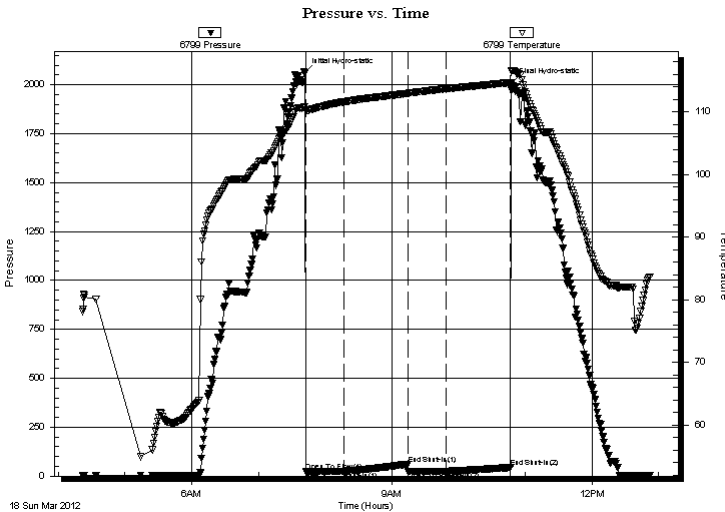
## Serial #: 6799

Inside

Press @ Run Depth: 25.00 psig @ 4119.00 ft (KB)      Capacity: 8000.00 psig  
Start Date: 2012.03.18      End Date: 2012.03.18      Last Calib.: 2012.03.18  
Start Time: 04:22:05      End Time: 12:51:59      Time On Btm: 2012.03.18 @ 07:41:45  
Time Off Btm: 2012.03.18 @ 10:48:00

TEST COMMENT: IF- Surface blow built to 1/2"  
IS- No Return  
FF- No Blow  
FS- No Return

## PRESSURE SUMMARY



Time (Min.)	Pressure (psig)	Temp (deg F)	Annotation
0	2060.52	110.82	Initial Hydro-static
1	22.56	110.18	Open To Flow (1)
35	24.68	111.59	Shut-In(1)
93	61.94	112.94	End Shut-In(1)
93	24.12	112.95	Open To Flow (2)
127	25.00	113.69	Shut-In(2)
185	44.46	114.67	End Shut-In(2)
187	2011.26	116.60	Final Hydro-static

## Recovery

Length (ft)	Description	Volume (bbl)
5.00	OSM 100M (oil spots)	0.02

## Gas Rates

Choke (inches)	Pressure (psig)	Gas Rate (Mcf/d)



**TRILOBITE  
TESTING, INC.**

# DRILL STEM TEST REPORT

Murfin Drilling Co.  
250 N. Water STE 300  
Wichita, KS 67202  
ATTN: Mike Maune

**29-5s-30w Decatur, KS**  
**Shaw #1-29**  
Job Ticket: 46101      **DST#: 4**  
Test Start: 2012.03.18 @ 04:22:00

## GENERAL INFORMATION:

Formation: **LKC "K-L"**  
 Deviated: No Whipstock:                      ft (KB)  
 Time Tool Opened: 07:42:45  
 Time Test Ended: 12:52:00  
 Interval: **4118.00 ft (KB) To 4180.00 ft (KB) (TVD)**  
 Total Depth: 4180.00 ft (KB) (TVD)  
 Hole Diameter: 7.88 inches Hole Condition: Good

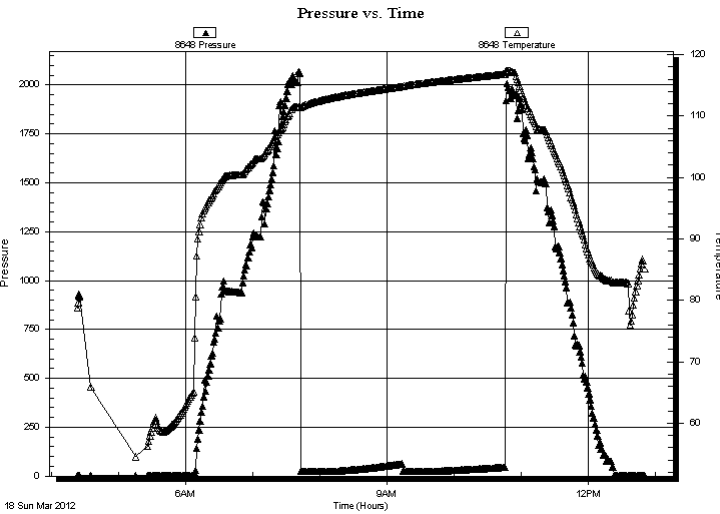
Test Type: Conventional Bottom Hole (Initial)  
 Tester: Kevin Mack  
 Unit No: 43  
 Reference Elevations: 2926.00 ft (KB)  
 2921.00 ft (CF)  
 KB to GR/CF: 5.00 ft

## Serial #: 8648

Inside

Press @ Run Depth:                      psig @ 4119.00 ft (KB)  
 Start Date: 2012.03.18      End Date: 2012.03.18  
 Start Time: 04:23:05      End Time: 12:51:14  
 Capacity: 8000.00 psig  
 Last Calib.: 2012.03.18  
 Time On Btm:  
 Time Off Btm:

TEST COMMENT: IF- Surface blow built to 1/2"  
 IS- No Return  
 FF- No Blow  
 FS- No Return



## PRESSURE SUMMARY

Time (Min.)	Pressure (psig)	Temp (deg F)	Annotation

## Recovery

Length (ft)	Description	Volume (bbl)
5.00	OSM 100M (oil spots)	0.02

## Gas Rates

	Choke (inches)	Pressure (psig)	Gas Rate (Mcf/d)





**TRILOBITE  
TESTING, INC.**

# DRILL STEM TEST REPORT

**TOOL DIAGRAM**

Murfin Drilling Co.

**29-5s-30w Decatur,KS**

250 N. Water STE 300  
Wichita, KS 67202

**Shaw #1-29**

Job Ticket: 46101

**DST#: 4**

ATTN: Mike Maune

Test Start: 2012.03.18 @ 04:22:00

## Tool Information

Drill Pipe:	Length: 3917.00 ft	Diameter: 3.80 inches	Volume: 54.95 bbl	Tool Weight: 2500.00 lb
Heavy Wt. Pipe:	Length: 0.00 ft	Diameter: 0.00 inches	Volume: 0.00 bbl	Weight set on Packer: 25000.00 lb
Drill Collar:	Length: 180.00 ft	Diameter: 2.25 inches	Volume: 0.89 bbl	Weight to Pull Loose: 82000.00 lb
			<u>Total Volume: 55.84 bbl</u>	Tool Chased ft
Drill Pipe Above KB:	8.00 ft			String Weight: Initial 68000.00 lb
Depth to Top Packer:	4118.00 ft			Final 68000.00 lb
Depth to Bottom Packer:	ft			
Interval between Packers:	62.00 ft			
Tool Length:	91.00 ft			
Number of Packers:	2	Diameter: 6.75 inches		

Tool Comments:

## Tool Description

Tool Description	Length (ft)	Serial No.	Position	Depth (ft)	Accum. Lengths
Change Over Sub	1.00			4090.00	
Shut In Tool	5.00			4095.00	
Hydraulic tool	5.00			4100.00	
Jars	5.00			4105.00	
Safety Joint	3.00			4108.00	
Packer	5.00			4113.00	29.00 Bottom Of Top Packer
Packer	5.00			4118.00	
Stubb	1.00			4119.00	
Recorder	0.00	8648	Inside	4119.00	
Recorder	0.00	6799	Inside	4119.00	
Perforations	22.00			4141.00	
Change Over Sub	1.00			4142.00	
Drill Pipe	32.00			4174.00	
Change Over Sub	1.00			4175.00	
Bullnose	5.00			4180.00	62.00 Bottom Packers & Anchor

**Total Tool Length: 91.00**



**TRILOBITE  
TESTING, INC.**

# DRILL STEM TEST REPORT

**FLUID SUMMARY**

Murfin Drilling Co.

**29-5s-30w Decatur,KS**

250 N. Water STE 300  
Wichita, KS 67202

**Shaw #1-29**

Job Ticket: 46101

**DST#: 4**

ATTN: Mike Maune

Test Start: 2012.03.18 @ 04:22:00

## Mud and Cushion Information

Mud Type: Gel Chem

Cushion Type:

Oil API:

deg API

Mud Weight: 9.00 lb/gal

Cushion Length:

ft

Water Salinity:

ppm

Viscosity: 59.00 sec/qt

Cushion Volume:

bbbl

Water Loss: 5.58 in<sup>3</sup>

Gas Cushion Type:

Resistivity: 0.00 ohm.m

Gas Cushion Pressure:

psig

Salinity: 800.00 ppm

Filter Cake: 2.00 inches

## Recovery Information

Recovery Table

Length ft	Description	Volume bbl
5.00	OSM 100M (oil spots)	0.025

Total Length: 5.00 ft      Total Volume: 0.025 bbl

Num Fluid Samples: 0

Num Gas Bombs: 0

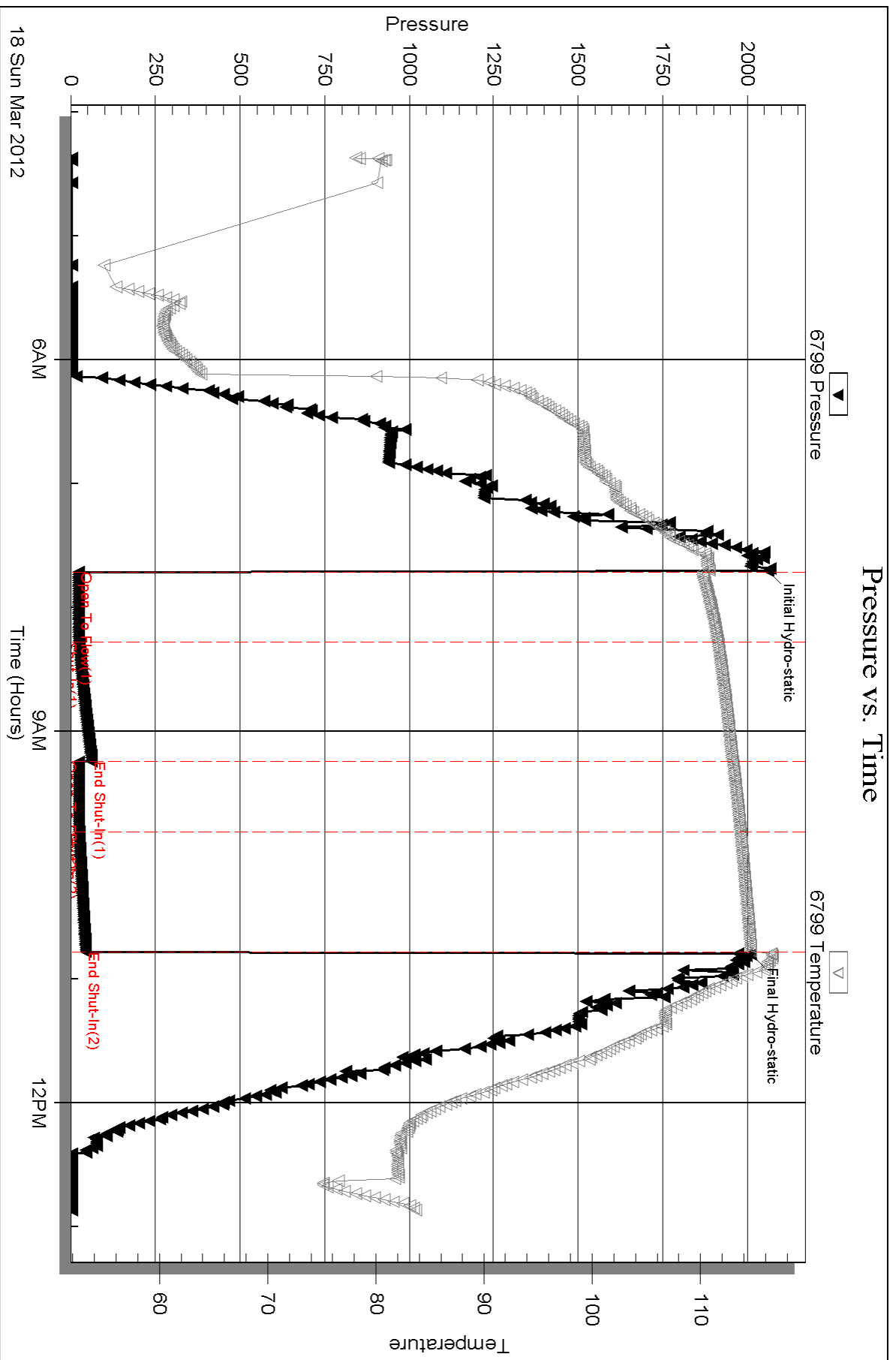
Serial #:

Laboratory Name:

Laboratory Location:

Recovery Comments:

### Pressure vs. Time



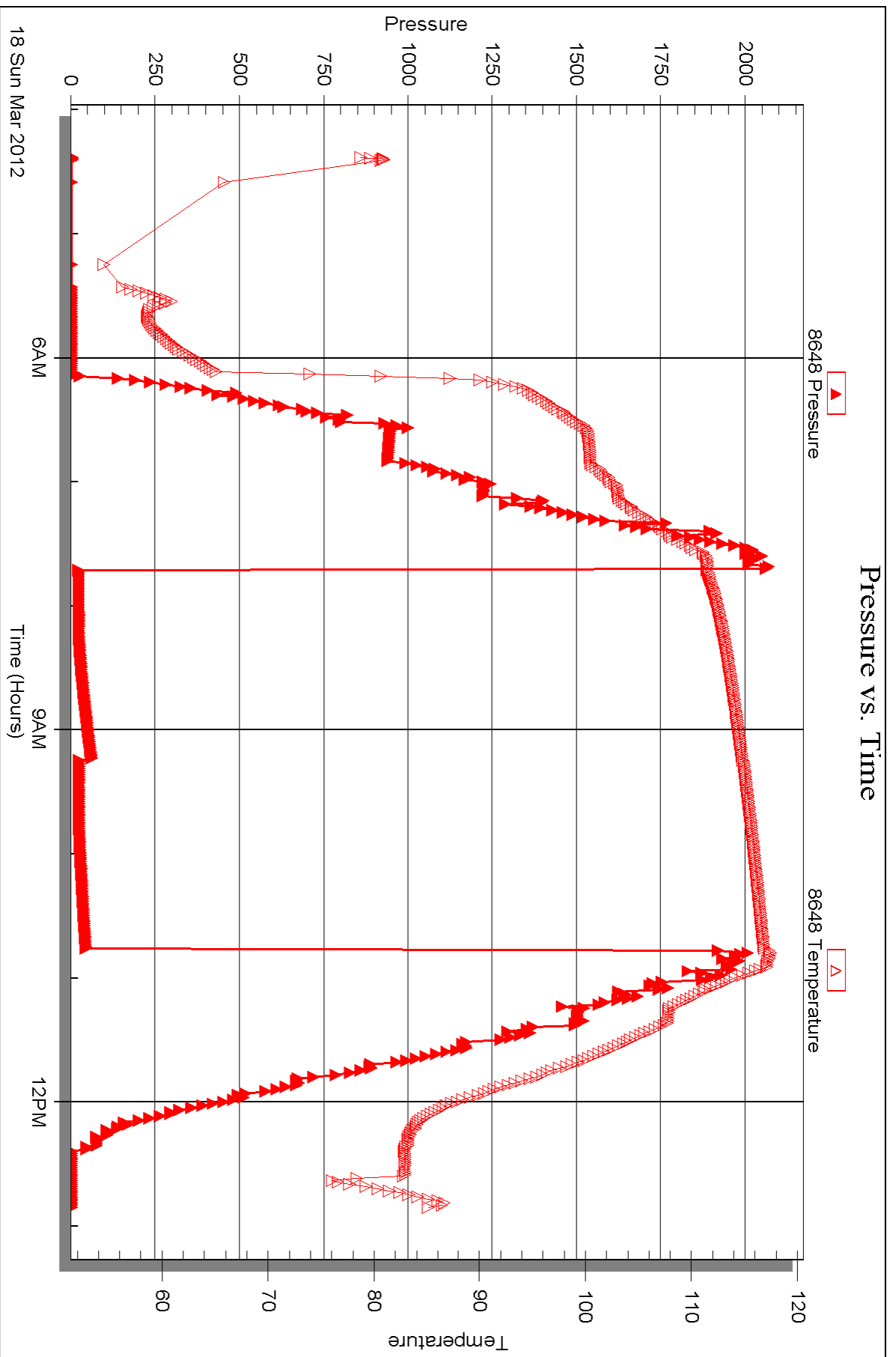
Serial #: 8648

Inside

Murfin Drilling Co.

Shaw #1-29

DST Test Number: 4





## DRILL STEM TEST REPORT

Prepared For: **Murfin Drilling Co.**

250 N. Water STE 300  
Wichita, KS 67202

ATTN: Mike Maune

### **Shaw #1-29**

#### **29-5s-30w Decatur,KS**

Start Date: 2012.03.19 @ 20:52:00

End Date: 2012.03.20 @ 04:55:00

Job Ticket #: 46102                      DST #: 5

Trilobite Testing, Inc  
PO Box 362 Hays, KS 67601  
ph: 785-625-4778 fax: 785-625-5620

Printed: 2012.03.21 @ 14:52:50



**TRILOBITE  
TESTING, INC.**

# DRILL STEM TEST REPORT

Murfin Drilling Co.  
250 N. Water STE 300  
Wichita, KS 67202  
ATTN: Mike Maune

**29-5s-30w Decatur, KS**

**Shaw #1-29**

Job Ticket: 46102

**DST#: 5**

Test Start: 2012.03.19 @ 20:52:00

## GENERAL INFORMATION:

Formation: **Cherokee**

Deviated: No Whipstock: ft (KB)

Time Tool Opened: 23:43:45

Time Test Ended: 04:55:00

Test Type: Conventional Bottom Hole (Initial)

Tester: Kevin Mack

Unit No: 43

**Interval: 4356.00 ft (KB) To 4390.00 ft (KB) (TVD)**

Reference Elevations: 2926.00 ft (KB)

Total Depth: 4390.00 ft (KB) (TVD)

2921.00 ft (CF)

Hole Diameter: 7.88 inches Hole Condition: Good

KB to GR/CF: 5.00 ft

**Serial #: 6799 Inside**

Press @ Run Depth: 38.43 psig @ 4357.00 ft (KB)

Capacity: 8000.00 psig

Start Date: 2012.03.19

End Date:

2012.03.20

Last Calib.:

2012.03.20

Start Time: 20:52:05

End Time:

04:54:59

Time On Btm:

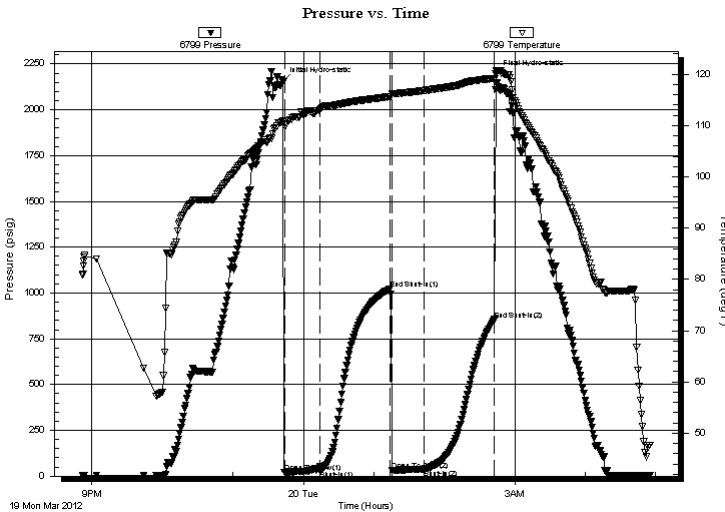
2012.03.19 @ 23:42:45

Time Off Btm:

2012.03.20 @ 02:44:15

**TEST COMMENT:** IF- 1/4" Blow built to 1"  
IS- No Return  
FF- Surface Blow started at 5 min. Built to 1/4"  
FS- No Return

## PRESSURE SUMMARY



Time (Min.)	Pressure (psig)	Temp (deg F)	Annotation
0	2152.47	110.87	Initial Hydro-static
1	21.36	110.14	Open To Flow (1)
32	30.03	112.99	Shut-In(1)
91	1023.46	115.63	End Shut-In(1)
93	33.04	116.20	Open To Flow (2)
121	38.43	116.82	Shut-In(2)
180	854.97	119.21	End Shut-In(2)
182	2193.98	120.75	Final Hydro-static

## Recovery

Length (ft)	Description	Volume (bbl)
24.00	OCM 95M 5o	0.12
1.00	Free oil 100o	0.00

## Gas Rates

Choke (inches)	Pressure (psig)	Gas Rate (Mcf/d)



**TRILOBITE  
TESTING, INC.**

**DRILL STEM TEST REPORT**

Murfin Drilling Co.  
250 N. Water STE 300  
Wichita, KS 67202  
ATTN: Mike Maune

**29-5s-30w Decatur,KS**

**Shaw #1-29**

Job Ticket: 46102

**DST#: 5**

Test Start: 2012.03.19 @ 20:52:00

**GENERAL INFORMATION:**

Formation: **Cherokee**  
Deviated: No Whipstock: ft (KB)  
Time Tool Opened: 23:43:45  
Time Test Ended: 04:55:00

Test Type: Conventional Bottom Hole (Initial)  
Tester: Kevin Mack  
Unit No: 43

Interval: **4356.00 ft (KB) To 4390.00 ft (KB) (TVD)**  
Total Depth: 4390.00 ft (KB) (TVD)  
Hole Diameter: 7.88 inches  
Hole Condition: Good

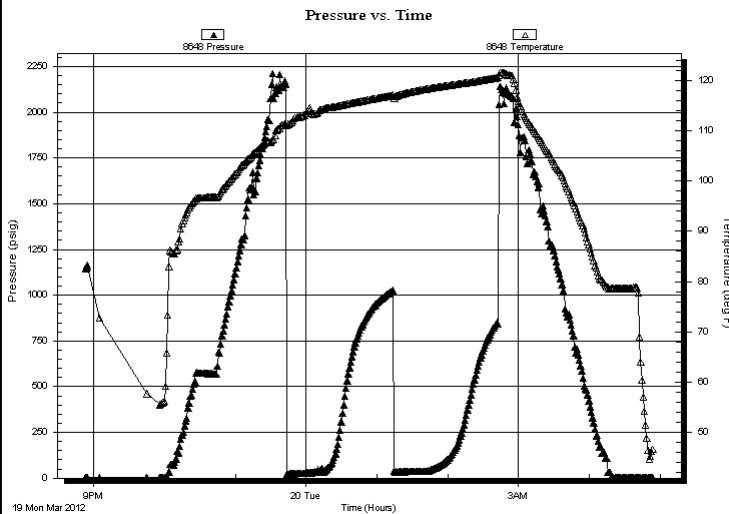
Reference Elevations: 2926.00 ft (KB)  
2921.00 ft (CF)  
KB to GR/CF: 5.00 ft

**Serial #: 8648 Inside**

Press@RunDepth: psig @ 4357.00 ft (KB)  
Start Date: 2012.03.19 End Date: 2012.03.20  
Start Time: 20:53:05 End Time: 04:54:14

Capacity: 8000.00 psig  
Last Calib.: 2012.03.20  
Time On Btm:  
Time Off Btm:

**TEST COMMENT:** IF- 1/4" Blow built to 1"  
IS- No Return  
FF- Surface Blow started at 5 min. Built to 1/4"  
FS- No Return



**PRESSURE SUMMARY**

Time (Min.)	Pressure (psig)	Temp (deg F)	Annotation

**Recovery**

Length (ft)	Description	Volume (bbl)
24.00	OCM 95M 5o	0.12
1.00	Free oil 100o	0.00

**Gas Rates**

	Choke (inches)	Pressure (psig)	Gas Rate (Mcf/d)



**TRILOBITE  
TESTING, INC.**

# DRILL STEM TEST REPORT

**TOOL DIAGRAM**

Murfin Drilling Co.

**29-5s-30w Decatur,KS**

250 N. Water STE 300  
Wichita, KS 67202

**Shaw #1-29**

Job Ticket: 46102

**DST#: 5**

ATTN: Mike Maune

Test Start: 2012.03.19 @ 20:52:00

## Tool Information

Drill Pipe:	Length: 4172.00 ft	Diameter: 3.80 inches	Volume: 58.52 bbl	Tool Weight:	2500.00 lb
Heavy Wt. Pipe:	Length: 0.00 ft	Diameter: 0.00 inches	Volume: 0.00 bbl	Weight set on Packer:	25000.00 lb
Drill Collar:	Length: 180.00 ft	Diameter: 2.25 inches	Volume: 0.89 bbl	Weight to Pull Loose:	73000.00 lb
			<u>Total Volume: 59.41 bbl</u>	Tool Chased	ft
Drill Pipe Above KB:	25.00 ft			String Weight: Initial	65000.00 lb
Depth to Top Packer:	4356.00 ft			Final	65000.00 lb
Depth to Bottom Packer:	ft				
Interval between Packers:	34.00 ft				
Tool Length:	63.00 ft				
Number of Packers:	2	Diameter: 6.75 inches			
Tool Comments:					

Tool Description	Length (ft)	Serial No.	Position	Depth (ft)	Accum. Lengths
------------------	-------------	------------	----------	------------	----------------

Change Over Sub	1.00			4328.00	
Shut In Tool	5.00			4333.00	
Hydraulic tool	5.00			4338.00	
Jars	5.00			4343.00	
Safety Joint	3.00			4346.00	
Packer	5.00			4351.00	29.00 Bottom Of Top Packer
Packer	5.00			4356.00	
Stubb	1.00			4357.00	
Recorder	0.00	8648	Inside	4357.00	
Recorder	0.00	6799	Inside	4357.00	
Perforations	28.00			4385.00	
Bullnose	5.00			4390.00	34.00 Bottom Packers & Anchor

**Total Tool Length: 63.00**





**TRILOBITE  
TESTING, INC.**

# DRILL STEM TEST REPORT

**FLUID SUMMARY**

Murfin Drilling Co.

**29-5s-30w Decatur,KS**

250 N. Water STE 300  
Wichita, KS 67202

**Shaw #1-29**

Job Ticket: 46102

**DST#: 5**

ATTN: Mike Maune

Test Start: 2012.03.19 @ 20:52:00

## Mud and Cushion Information

Mud Type: Gel Chem

Cushion Type:

Oil API:

deg API

Mud Weight: 9.00 lb/gal

Cushion Length:

ft

Water Salinity:

ppm

Viscosity: 50.00 sec/qt

Cushion Volume:

bbbl

Water Loss: 6.39 in<sup>3</sup>

Gas Cushion Type:

Resistivity: 0.00 ohm.m

Gas Cushion Pressure:

psig

Salinity: 1000.00 ppm

Filter Cake: 2.00 inches

## Recovery Information

Recovery Table

Length ft	Description	Volume bbl
24.00	OCM 95M 5o	0.118
1.00	Free oil 100o	0.005

Total Length: 25.00 ft      Total Volume: 0.123 bbl

Num Fluid Samples: 0

Num Gas Bombs: 0

Serial #:

Laboratory Name:

Laboratory Location:

Recovery Comments:

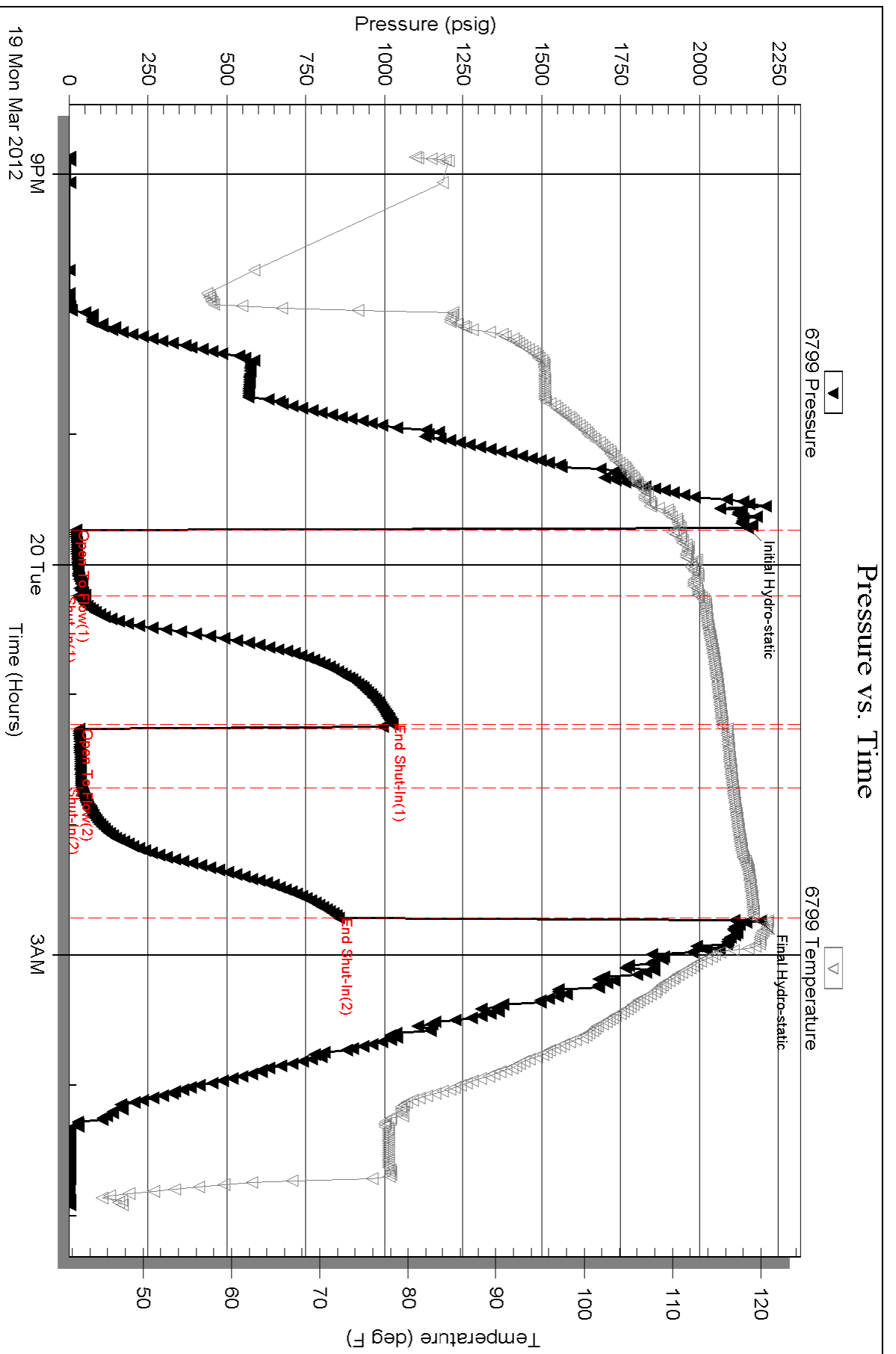
Serial #: 6799

Inside

Murfin Drilling Co.

Shaw #1-29

DST Test Number: 5



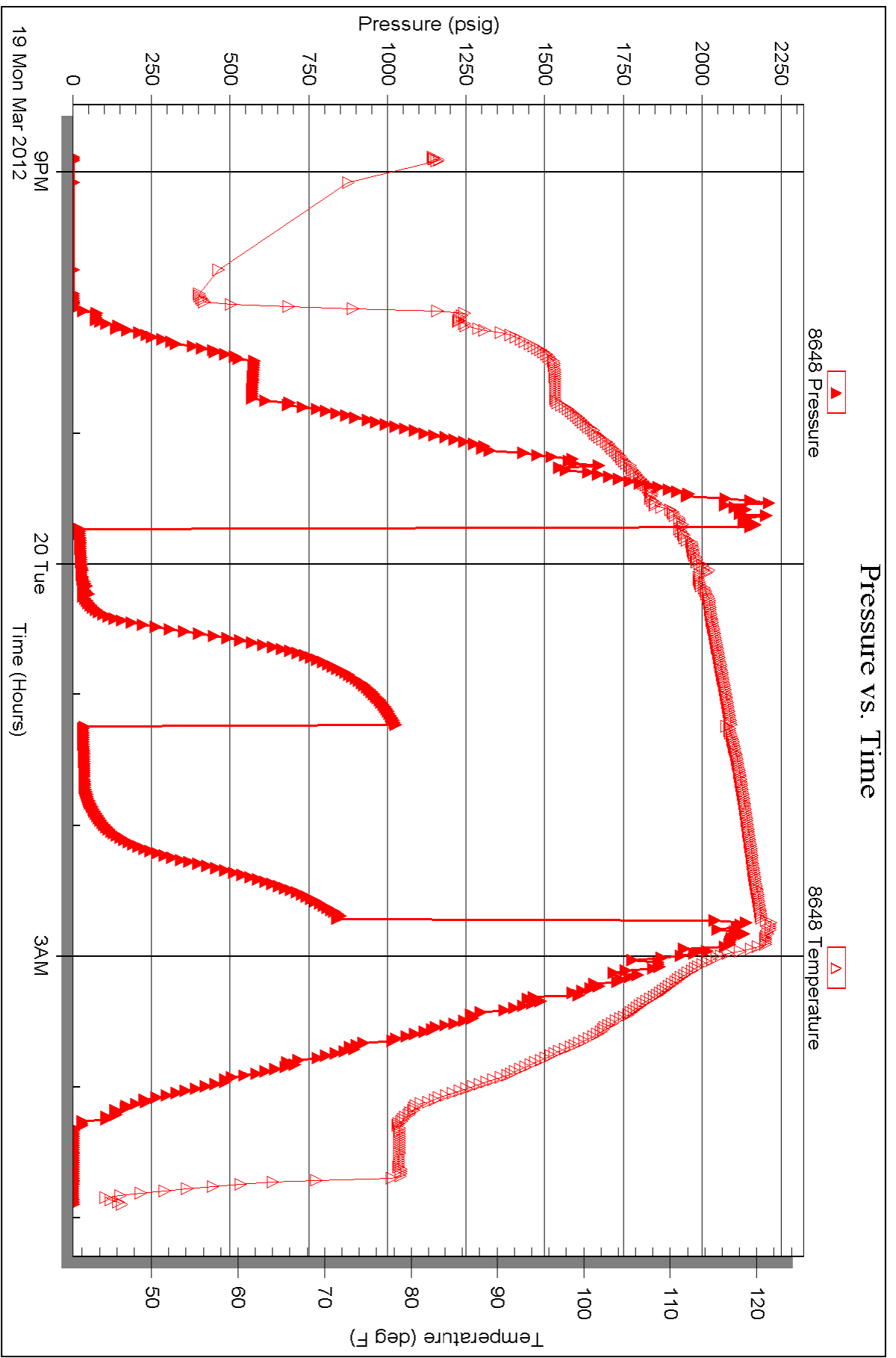
Serial #: 8648

Inside

Murfin Drilling Co.

Shaw #1-29

DST Test Number: 5





# TRILOBITE TESTING INC.

P.O. Box 1733 • Hays, Kansas 67601

RECEIVED  
MAR 21 2012

## Test Ticket

NO. 45622

Well Name & No. Shaw # 1-29 Test No. 1 Date 3-15-12  
 Company Muffin Drilling Co. Elevation 2926 KB 2921 GL  
 Address 250 N Water STE.#300 Wichita, KS 67202  
 Co. Rep / Geo. Mike Maune Rig Muffin #8  
 Location: Sec. 29 Twp. 5s Rge. 30w Co. Decatur State KS

Interval Tested 3906-3988 Zone Tested Toronto, LKC "A-B"  
 Anchor Length 82' Drill Pipe Run 3703' Mud Wt. 9.0  
 Top Packer Depth 3902 Drill Collars Run 180' Vis 52  
 Bottom Packer Depth 3906 Wt. Pipe Run Ø WL 5.6  
 Total Depth 3988 Chlorides 800 ppm System LCM 7#  
 Blow Description IF-Weak surface blow built to 1/2"  
IS- No Return  
BF- No Blow  
FS- no Return

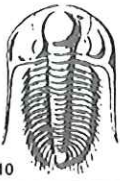
Rec	Feet of	%gas (SPETS)	%oil	%water	%mud
<u>60</u>	<u>Feet of <del>1800</del> OSM</u>			<u>100</u>	
Rec	Feet of	%gas	%oil	%water	%mud
Rec	Feet of	%gas	%oil	%water	%mud
Rec	Feet of	%gas	%oil	%water	%mud
Rec	Feet of	%gas	%oil	%water	%mud

Rec Total 60 BHT 115 Gravity - API RW - @ - ° F Chlorides - ppm  
 (A) Initial Hydrostatic 1915  Test 1125 T-On Location 3:45 PM  
 (B) First Initial Flow 22  Jars 250 T-Started 5:26 PM  
 (C) First Final Flow 47  Safety Joint 75 T-Open 7:35 PM  
 (D) Initial Shut-In 1260  Circ Sub N/C T-Pulled 10:35 PM  
 (E) Second Initial Flow 51  Hourly Standby \_\_\_\_\_ T-Out 12:25 AM  
 (F) Second Final Flow 73  Mileage 60 RT 84 Comments \_\_\_\_\_  
 (G) Final Shut-In 1245  Sampler \_\_\_\_\_  
 (H) Final Hydrostatic 1860  Straddle \_\_\_\_\_  
 Shale Packer \_\_\_\_\_  
 Extra Packer \_\_\_\_\_  
 Extra Recorder \_\_\_\_\_  
 Day Standby \_\_\_\_\_  
 Accessibility \_\_\_\_\_  
 Sub Total 1534

Approved By \_\_\_\_\_

Our Representative [Signature]

Trilobite Testing Inc. shall not be liable for damaged or any kind of the property or personnel of the one for whom a test is made, or for any loss suffered or sustained, directly or indirectly, through the use of its equipment, or its statements or opinion concerning the results of any test, tools lost or damaged in the hole shall be paid for at cost by the party for whom the test is made.



# TRILOBITE TESTING INC.

P.O. Box 1733 • Hays, Kansas 67601

RECEIVED  
MAR 21 2012  
BY: \_\_\_\_\_

## Test Ticket

NO. 45623

Well Name & No. Shaw # 1-29 Test No. 2 Date 3-16-12  
 Company Murfin Drilling Co. Elevation 2926 KB 2921 GL  
 Address 250 N Water STE #300 Wichita, KS 67202  
 Co. Rep / Geo. Mike Maune Rig Murfin #8  
 Location: Sec. 29 Twp. 5S Rge. 30 W Co. Decatur State KS

Interval Tested 4009-4025 Zone Tested L/KC "F"  
 Anchor Length 16' Drill Pipe Run 3826 Mud Wt. 9.2  
 Top Packer Depth 4004 Drill Collars Run 180 Vis 49  
 Bottom Packer Depth 4009 Wt. Pipe Run Ø WL 6.0  
 Total Depth 4025 Chlorides 800 ppm System LCM 7#

Blow Description IF- Weak Surface blow built to 1/8"  
IS- No Return  
FF- No Blow  
FS- No Return

Rec	Feet of	%gas (spots)	%oil	%water	%mud
<u>5</u>	<u>OSM</u>			<u>100</u>	
Rec	Feet of	%gas	%oil	%water	%mud
Rec	Feet of	%gas	%oil	%water	%mud
Rec	Feet of	%gas	%oil	%water	%mud
Rec	Feet of	%gas	%oil	%water	%mud

Rec Total 5 BHT 116 Gravity - API RW - @ - ° F Chlorides - ppm

(A) Initial Hydrostatic <u>1994</u>	<input checked="" type="checkbox"/> Test <u>1225</u>	T-On Location <u>9:55 AM</u>
(B) First Initial Flow <u>18</u>	<input checked="" type="checkbox"/> Jars <u>250</u>	T-Started <u>10:32 AM</u>
(C) First Final Flow <u>20</u>	<input checked="" type="checkbox"/> Safety Joint <u>75'</u>	T-Open <u>1:07 PM</u>
(D) Initial Shut-In <u>46</u>	<input checked="" type="checkbox"/> Circ Sub <u>N/C</u>	T-Pulled <u>4:07 PM</u>
(E) Second Initial Flow <u>20</u>	<input type="checkbox"/> Hourly Standby	T-Out <u>5:50 PM</u>
(F) Second Final Flow <u>20</u>	<input checked="" type="checkbox"/> Mileage <u>60 RT 84'</u>	Comments _____
(G) Final Shut-In <u>32</u>	<input type="checkbox"/> Sampler	<input type="checkbox"/> Ruined Shale Packer
(H) Final Hydrostatic <u>1995</u>	<input type="checkbox"/> Straddle	<input type="checkbox"/> Ruined Packer
Initial Open <u>30</u>	<input type="checkbox"/> Shale Packer	<input type="checkbox"/> Extra Copies
Initial Shut-In <u>60</u>	<input type="checkbox"/> Extra Packer	Sub Total <u>Ø</u>
Final Flow <u>30</u>	<input type="checkbox"/> Extra Recorder	Total <u>11634'</u>
Final Shut-In <u>60</u>	<input type="checkbox"/> Day Standby	MP/DST Disc't _____
	<input type="checkbox"/> Accessibility	
	Sub Total <u>11634'</u>	

Approved By \_\_\_\_\_ Our Representative

TriLOBITE Testing Inc. shall not be liable for damaged of any kind of the property or personnel of the one for whom a test is made, or for any loss suffered or sustained, directly or indirectly, through the use of its equipment, or its statements or opinion concerning the results of any test, tools lost or damaged in the hole shall be paid for at cost by the party for whom the test is made.



# TRILOBITE TESTING INC.

P.O. Box 1733 • Hays, Kansas 67601

RECEIVED  
MAR 21 2012

## Test Ticket

NO. 45624

4/10

Well Name & No. Shaw # 1-29 BY: \_\_\_\_\_ Test No. 3 Date 3-17-12  
 Company Murfin Drilling Co. Elevation 2926 KB 2921 GL  
 Address 250 N Water STE #300 Wichita, KS 67202  
 Co. Rep / Geo. Milke Maune Rig Murfin #8  
 Location: Sec. 29 Twp. 5s Rge. 30w Co. Decatur State KS

Interval Tested 4084-4124 Zone Tested LKC "J"  
 Anchor Length 40' Drill Pipe Run 3890' Mud Wt. 9.2  
 Top Packer Depth 4080 Drill Collars Run 180' Vis 49  
 Bottom Packer Depth 4084 Wt. Pipe Run Ø WL 6.0  
 Total Depth 4124 Chlorides 800 ppm System LCM 7#

Blow Description IF - weak surface blow built to 1/4"  
IS - No Return  
FF - No Blow  
FS - No Return

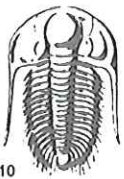
Rec	Feet of	%gas	%oil	%water	%mud
<u>5</u>	<u>Mud</u>			<u>100</u>	
Rec	Feet of	%gas	%oil	%water	%mud
Rec	Feet of	%gas	%oil	%water	%mud
Rec	Feet of	%gas	%oil	%water	%mud
Rec	Feet of	%gas	%oil	%water	%mud

Rec Total 5 BHT 116 Gravity — API RW — @ — °F Chlorides — ppm

(A) Initial Hydrostatic 2034  Test 1225' T-On Location 8:30 AM  
 (B) First Initial Flow 22  Jars 250' T-Started 8:50 AM  
 (C) First Final Flow 23  Safety Joint 75' T-Open 11:46 AM  
 (D) Initial Shut-In 40  Circ Sub M/C T-Pulled 2:46 PM  
 (E) Second Initial Flow 25  Hourly Standby \_\_\_\_\_ T-Out 4:48 PM  
 (F) Second Final Flow 25  Mileage 60 RT 84' Comments \_\_\_\_\_  
 (G) Final Shut-In 38  Sampler \_\_\_\_\_  
 (H) Final Hydrostatic 2059  Straddle \_\_\_\_\_  Ruined Shale Packer \_\_\_\_\_  
 Shale Packer \_\_\_\_\_  Ruined Packer \_\_\_\_\_  
 Extra Packer \_\_\_\_\_  Extra Copies \_\_\_\_\_  
 Initial Open 30  Extra Recorder \_\_\_\_\_ Sub Total Ø  
 Initial Shut-In 60  Day Standby \_\_\_\_\_ Total 11034'  
 Final Flow 30  Accessibility \_\_\_\_\_ MP/DST Disc't \_\_\_\_\_  
 Final Shut-In 60 Sub Total 11034'

Approved By \_\_\_\_\_ Our Representative

TriLOBITE Testing Inc. shall not be liable for damaged of any kind of the property or personnel of the one for whom a test is made, or for any loss suffered or sustained, directly or indirectly, through the use of its equipment, or its statements or opinion concerning the results of any test, tools lost or damaged in the hole shall be paid for at cost by the party for whom the test is made.



# TRILOBITE TESTING INC.

P.O. Box 1733 • Hays, Kansas 67601

RECEIVED  
MAR 21 2012

## Test Ticket

NO. 46101

4/10

BY:

Well Name & No. Shaw # 1-29 Test No. 4 Date 3-18-12  
 Company Murphy Drilling Co. Elevation 2926 KB 2921 GL  
 Address 250 N. Water STE #300 Wichita, KS 67202  
 Co. Rep / Geo. Mike Maune Rig Murphy #8  
 Location: Sec. 29 Twp. S5 Rge. 30 W Co. Decatur State KS

Interval Tested 4118-4180 Zone Tested LKC "K-L"  
 Anchor Length 62' Drill Pipe Run 3917 Mud Wt. 9.1  
 Top Packer Depth 4114 Drill Collars Run 180 Vis 59  
 Bottom Packer Depth 4118 Wt. Pipe Run Ø WL 5.6  
 Total Depth 4180 Chlorides 800 ppm System LCM 8#  
 Blow Description IF - Surface Blow built to 1/2"  
IS - No Return  
FF - No Blow  
PS - No Return

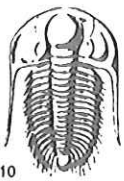
Rec	Feet of	%gas	%oil	%water	%mud
<u>5</u>	<u>OSM</u>	<u>(slits)</u>		<u>100</u>	
Rec	Feet of	%gas	%oil	%water	%mud
Rec	Feet of	%gas	%oil	%water	%mud
Rec	Feet of	%gas	%oil	%water	%mud

Rec Total 5 BHT 115 Gravity - API RW - @ - ° F Chlorides - ppm

(A) Initial Hydrostatic <u>2060</u>	<input checked="" type="checkbox"/> Test <u>1225</u>	T-On Location <u>4:00 AM</u>
(B) First Initial Flow <u>22</u>	<input checked="" type="checkbox"/> Jars <u>250</u>	T-Started <u>4:22 AM</u>
(C) First Final Flow <u>24</u>	<input checked="" type="checkbox"/> Safety Joint <u>75</u>	T-Open <u>7:42 AM</u>
(D) Initial Shut-In <u>61</u>	<input checked="" type="checkbox"/> Circ Sub <u>N/C</u>	T-Pulled <u>10:42 AM</u>
(E) Second Initial Flow <u>24</u>	<input type="checkbox"/> Hourly Standby	T-Out <u>12:52 PM</u>
(F) Second Final Flow <u>25</u>	<input checked="" type="checkbox"/> Mileage <u>60 RT 84</u>	Comments
(G) Final Shut-In <u>44</u>	<input type="checkbox"/> Sampler	
(H) Final Hydrostatic <u>2011</u>	<input type="checkbox"/> Straddle	<input type="checkbox"/> Ruined Shale Packer
	<input type="checkbox"/> Shale Packer	<input type="checkbox"/> Ruined Packer
Initial Open <u>30</u>	<input type="checkbox"/> Extra Packer	<input type="checkbox"/> Extra Copies
Initial Shut-In <u>60</u>	<input type="checkbox"/> Extra Recorder	Sub Total <u>Ø</u>
Final Flow <u>30</u>	<input type="checkbox"/> Day Standby	Total <u>11034</u>
Final Shut-In <u>60</u>	<input type="checkbox"/> Accessibility	MP/DST Disc't
	Sub Total <u>11034</u>	

Approved By \_\_\_\_\_ Our Representative

Trilobite Testing Inc. shall not be liable for damaged of any kind of the property or personnel of the one for whom a test is made, or for any loss suffered or sustained, directly or indirectly, through the use of its equipment, or its statements or opinion concerning the results of any test, tools lost or damaged in the hole shall be paid for at cost by the party for whom the test is made.



# TRILOBITE TESTING INC.

P.O. Box 1733 • Hays, Kansas 67601

RECEIVED  
MAR 21 2012

## Test Ticket

NO. 46102

Well Name & No. Shaw # 1-29 BY: \_\_\_\_\_ Test No. 5 Date 3-19-12  
 Company Murrin Drilling Co. Elevation 2926 KB 2921 GL  
 Address 250 N Water STE #300 Wichita, KS 67202  
 Co. Rep / Geo. Mike Maune Rig Murrin #8  
 Location: Sec. 29 Twp. 5S Rge. 30W Co. Decatur State KS

Interval Tested 4356-4390 Zone Tested Cherokee  
 Anchor Length 34' Drill Pipe Run 4172 Mud Wt. 9.3  
 Top Packer Depth 4352 Drill Collars Run 180 Vis 50  
 Bottom Packer Depth 4356 Wt. Pipe Run Ø WL 6.4  
 Total Depth 4390 Chlorides 1,000 ppm System LCM 6#  
 Blow Description IF - 1/4" Built Blow built to 1"  
IS - No Return  
FF - Surface Blow started at 5 min. Built to 1/4"  
FS - No Return

Rec	Feet of	%gas	%oil	%water	%mud
<u>20</u> <u>1</u>	<u>ØCM Free oil</u>	<u>100</u>			
<u>24</u>	<u>ØCM</u>	<u>5</u>		<u>95</u>	
Rec	Feet of	%gas	%oil	%water	%mud
Rec	Feet of	%gas	%oil	%water	%mud

Rec Total 25' BHT 119 Gravity - API RW - @ - °F Chlorides - ppm

(A) Initial Hydrostatic <u>2152</u>	<input checked="" type="checkbox"/> Test <u>1225'</u>	T-On Location <u>8:10 PM</u>
(B) First Initial Flow <u>21</u>	<input checked="" type="checkbox"/> Jars <u>250'</u>	T-Started <u>8:52 PM</u>
(C) First Final Flow <u>30</u>	<input checked="" type="checkbox"/> Safety Joint <u>75'</u>	T-Open <u>11:43 PM</u>
(D) Initial Shut-In <u>1023</u>	<input checked="" type="checkbox"/> Circ Sub <u>N/C</u>	T-Pulled <u>2:43 AM</u>
(E) Second Initial Flow <u>33</u>	<input type="checkbox"/> Hourly Standby	T-Out <u>4:55 AM</u>
(F) Second Final Flow <u>38</u>	<input checked="" type="checkbox"/> Mileage <u>60 RT 84'</u>	Comments _____
(G) Final Shut-In <u>854</u>	<input type="checkbox"/> Sampler	
(H) Final Hydrostatic <u>2193</u>	<input type="checkbox"/> Straddle	<input type="checkbox"/> Ruined Shale Packer
Initial Open <u>30</u>	<input type="checkbox"/> Shale Packer	<input type="checkbox"/> Ruined Packer
Initial Shut-In <u>60</u>	<input type="checkbox"/> Extra Packer	<input type="checkbox"/> Extra Copies
Final Flow <u>30</u>	<input type="checkbox"/> Extra Recorder	Sub Total <u>Ø</u>
Final Shut-In <u>60</u>	<input type="checkbox"/> Day Standby	Total <u>11034'</u>
	<input type="checkbox"/> Accessibility	MP/DST Disc't _____
	Sub Total <u>11034'</u>	

Approved By \_\_\_\_\_ Our Representative [Signature]

Trilobite Testing Inc. shall not be liable for damaged of any kind of the property or personnel of the one for whom a test is made, or for any loss suffered or sustained, directly or indirectly, through the use of its equipment, or its statements or opinion concerning the results of any test, tools lost or damaged in the hole shall be paid for at cost by the party for whom the test is made.