



**TRILOBITE  
TESTING, INC.**

# DRILL STEM TEST REPORT

Srata Exploration INC

PO Box 401  
Fairfield IL 62837

ATTN: John Kinney/Jon Chri

**Robertson #2-33**

Job Ticket: 47467

**DST#: 1**

Test Start: 2012.03.11 @ 10:45:28

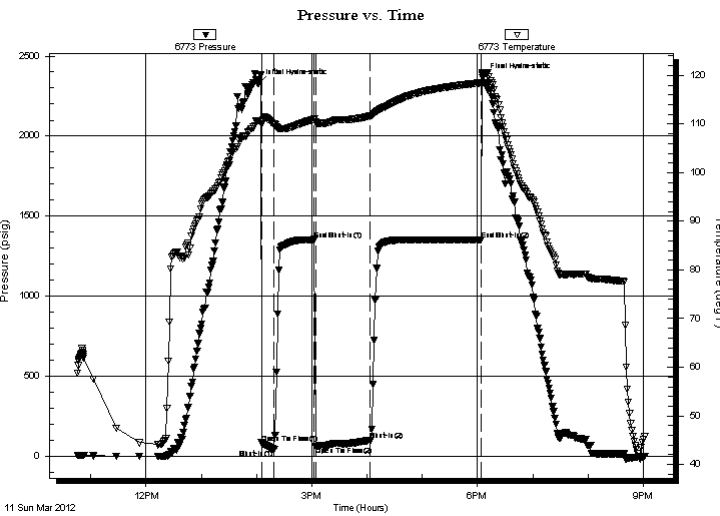
## GENERAL INFORMATION:

Formation: **Miss**  
 Deviated: No Whipstock: ft (KB)  
 Time Tool Opened: 14:05:43  
 Time Test Ended: 21:02:13  
 Interval: **4744.00 ft (KB) To 4788.00 ft (KB) (TVD)**  
 Total Depth: 4788.00 ft (KB) (TVD)  
 Hole Diameter: 7.88 inches Hole Condition: Fair  
 Test Type: Conventional Bottom Hole (Initial)  
 Tester: Chris Staats  
 Unit No: 47  
 Reference Elevations: 2205.00 ft (KB)  
 2194.00 ft (CF)  
 KB to GR/CF: 11.00 ft

## Serial #: 6773 Outside

Press @ Run Depth: 101.98 psig @ 4744.00 ft (KB) Capacity: 8000.00 psig  
 Start Date: 2012.03.11 End Date: 2012.03.11 Last Calib.: 2012.03.11  
 Start Time: 10:45:33 End Time: 21:02:13 Time On Btm: 2012.03.11 @ 14:02:28  
 Time Off Btm: 2012.03.11 @ 18:05:28

TEST COMMENT: IF: Strong blow BOB 30 sec GTS 7 min to small to measure  
 IS: Weak surface blow back  
 FF: Strong blow BOB 2 sec { see gas flow report }  
 FS: Fair blow back 5"



## PRESSURE SUMMARY

Time (Min.)	Pressure (psig)	Temp (deg F)	Annotation
0	2328.33	110.70	Initial Hydro-static
4	80.25	109.89	Open To Flow (1)
16	47.09	110.05	Shut-In(1)
61	1355.10	111.03	End Shut-In(1)
62	62.38	110.29	Open To Flow (2)
121	101.98	111.64	Shut-In(2)
242	1352.84	118.49	End Shut-In(2)
243	2363.65	120.22	Final Hydro-static

## Recovery

Length (ft)	Description	Volume (bbl)
0.00	4750 GIP	0.00
10.00	O,M,G 25% mud 35% oil 40% gas	0.05
290.00	G,O 20% gas 80% oil	2.18

## Gas Rates

	Choke (inches)	Pressure (psig)	Gas Rate (Mcf/d)
First Gas Rate	0.25	6.00	32.36
Last Gas Rate	0.25	3.00	27.60
Max. Gas Rate	0.25	6.00	32.36



**TRILOBITE  
TESTING, INC.**

# DRILL STEM TEST REPORT

**FLUID SUMMARY**

Srata Exploration INC

PO Box 401  
Fairfield IL 62837

ATTN: John Kinney/Jon Chri

**Robertson #2-33**

Job Ticket: 47467

**DST#: 1**

Test Start: 2012.03.11 @ 10:45:28

## Mud and Cushion Information

Mud Type: Gel Chem	Cushion Type:	Oil API:	deg API
Mud Weight: 9.00 lb/gal	Cushion Length: ft	Water Salinity:	ppm
Viscosity: 53.00 sec/qt	Cushion Volume: bbl		
Water Loss: 8.78 in <sup>3</sup>	Gas Cushion Type:		
Resistivity: 0.00 ohm.m	Gas Cushion Pressure: psig		
Salinity: 5000.00 ppm			
Filter Cake: 0.02 inches			

## Recovery Information

Recovery Table

Length ft	Description	Volume bbl
0.00	4750 GIP	0.000
10.00	O,M,G 25% mud 35% oil 40% gas	0.049
290.00	G,O 20% gas 80% oil	2.182

Total Length: 300.00 ft      Total Volume: 2.231 bbl

Num Fluid Samples: 0

Num Gas Bombs: 0

Serial #:

Laboratory Name:

Laboratory Location:

Recovery Comments:



**TRILOBITE  
TESTING, INC.**

## DRILL STEM TEST REPORT

**GAS RATES**

Srata Exploration INC

PO Box 401  
Fairfield IL 62837

ATTN: John Kinney/Jon Chri

**Robertson #2-33**

Job Ticket: 47467

**DST#: 1**

Test Start: 2012.03.11 @ 10:45:28

### Gas Rates Information

Temperature: 59 (deg F)  
Relative Density: 0.65  
Z Factor: 0.8

Gas Rates Table

Flow Period	Elapsed Time	Choke (inches)	Pressure (psig)	Gas Rate (Mcf/d)
2	5	0.25	6.00	32.36
2	10	0.25	6.00	32.36
2	20	0.25	4.00	29.19
2	30	0.25	4.00	29.19
2	40	0.25	3.00	27.60
2	50	0.25	3.00	27.60
2	60	0.25	3.00	27.60

