



**TRILOBITE
TESTING, INC.**

DRILL STEM TEST REPORT

Strata Exploration Inc.

3-28s-18w Kiowa Ks.

P.O.Box 401
Fairfield Il.62837

Richardson #1-3

Job Ticket: 46306

DST#: 2

ATTN: Jon Christensen

Test Start: 2012.04.06 @ 23:00:00

GENERAL INFORMATION:

Formation: **KC "B"**
 Deviated: No Whipstock: ft (KB)
 Time Tool Opened: 01:36:00
 Time Test Ended: 07:03:30
 Interval: **4257.00 ft (KB) To 4282.00 ft (KB) (TVD)**
 Total Depth: 4282.00 ft (KB) (TVD)
 Hole Diameter: 7.88 inches Hole Condition: Fair
 Test Type: Conventional Bottom Hole (Reset)
 Tester: Cody Bloedorn
 Unit No: 38
 Reference Elevations: 2219.00 ft (KB)
 2208.00 ft (CF)
 KB to GR/CF: 11.00 ft

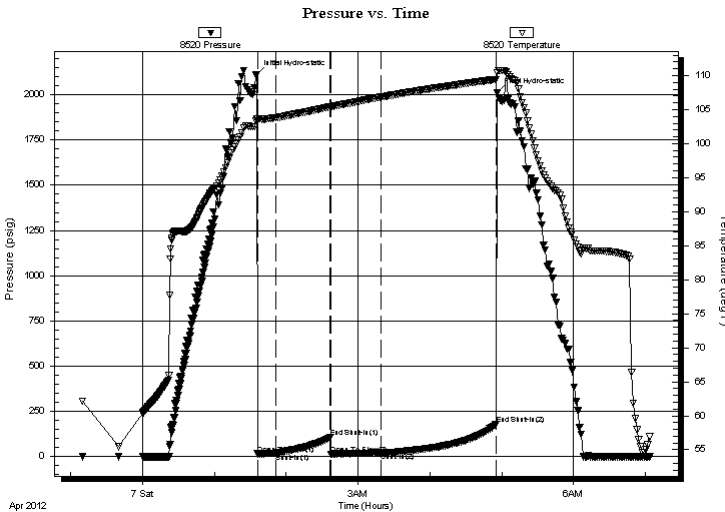
Serial #: 8520

Outside

Press@RunDepth: 20.97 psig @ 4258.00 ft (KB)
 Start Date: 2012.04.06 End Date: 2012.04.07
 Start Time: 23:10:00 End Time: 07:03:30
 Capacity: 8000.00 psig
 Last Calib.: 2012.04.07
 Time On Btm: 2012.04.07 @ 01:35:30
 Time Off Btm: 2012.04.07 @ 04:56:00

TEST COMMENT: 15 - IF- 1/4" blow
 45 - IS- No blow back
 45 - FF- 1/4" blow in 10 Min. Died in 25 Min.
 90 - FS- No blow back.

PRESSURE SUMMARY



Time (Min.)	Pressure (psig)	Temp (deg F)	Annotation
0	2112.88	103.66	Initial Hydro-static
1	14.68	103.41	Open To Flow (1)
16	18.91	103.79	Shut-In(1)
61	104.66	105.40	End Shut-In(1)
62	13.58	105.42	Open To Flow (2)
104	20.97	106.83	Shut-In(2)
200	178.14	109.44	End Shut-In(2)
201	2010.20	110.49	Final Hydro-static

Recovery

Length (ft)	Description	Volume (bbl)
5.00	Mud - Oil scum, 100%M	0.02

* Recovery from multiple tests

Gas Rates

Choke (inches)	Pressure (psig)	Gas Rate (Mcf/d)



**TRILOBITE
TESTING, INC.**

DRILL STEM TEST REPORT

Strata Exploration Inc.

3-28s-18w Kiowa Ks.

P.O.Box 401
Fairfield Il.62837

Richardson #1-3

Job Ticket: 46306

DST#: 2

ATTN: Jon Christensen

Test Start: 2012.04.06 @ 23:00:00

GENERAL INFORMATION:

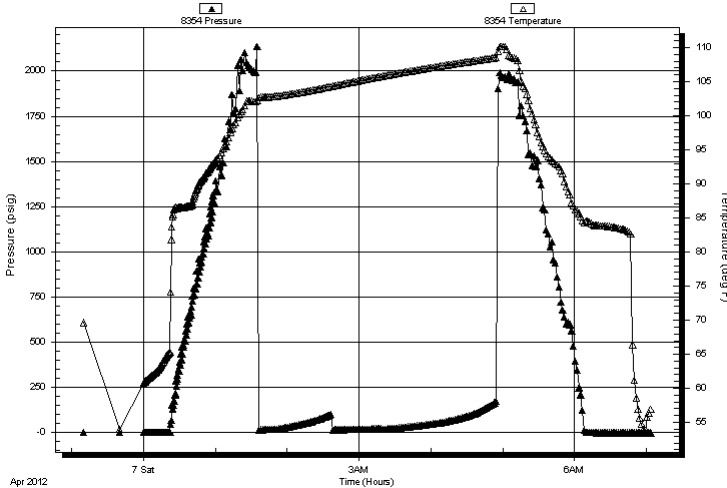
Formation: **KC "B"**
 Deviated: No Whipstock: ft (KB)
 Test Type: Conventional Bottom Hole (Reset)
 Time Tool Opened: 01:36:00
 Tester: Cody Bloedorn
 Time Test Ended: 07:03:30
 Unit No: 38
Interval: 4257.00 ft (KB) To 4282.00 ft (KB) (TVD)
 Reference Elevations: 2219.00 ft (KB)
 Total Depth: 4282.00 ft (KB) (TVD)
 2208.00 ft (CF)
 Hole Diameter: 7.88 inches
 Hole Condition: Fair
 KB to GR/CF: 11.00 ft

Serial #: 8354 Inside

Press @ RunDepth: psig @ 4258.00 ft (KB) Capacity: 8000.00 psig
 Start Date: 2012.04.06 End Date: 2012.04.07 Last Calib.: 2012.04.07
 Start Time: 23:10:00 End Time: 07:04:00 Time On Btm:
 Time Off Btm:

TEST COMMENT: 15 - IF- 1/4" blow
 45 - IS- No blow back
 45 - FF- 1/4" blow in 10 Min. Died in 25 Min.
 90 - FS- No blow back.

Pressure vs. Time



PRESSURE SUMMARY

Time (Min.)	Pressure (psig)	Temp (deg F)	Annotation

Recovery

Length (ft)	Description	Volume (bbl)
5.00	Mud - Oil scum, 100%M	0.02

* Recovery from multiple tests

Gas Rates

Choke (inches)	Pressure (psig)	Gas Rate (Mcf/d)



**TRILOBITE
TESTING, INC.**

DRILL STEM TEST REPORT

FLUID SUMMARY

Strata Exploration Inc.

3-28s-18w Kiowa Ks.

P.O.Box 401
Fairfield Il.62837

Richardson #1-3

Job Ticket: 46306

DST#: 2

ATTN: Jon Christensen

Test Start: 2012.04.06 @ 23:00:00

Mud and Cushion Information

Mud Type: Gel Chem

Cushion Type:

Oil API:

deg API

Mud Weight: 9.00 lb/gal

Cushion Length:

ft

Water Salinity:

ppm

Viscosity: 53.00 sec/qt

Cushion Volume:

bbbl

Water Loss: 9.79 in³

Gas Cushion Type:

Resistivity: 0.00 ohm.m

Gas Cushion Pressure:

psig

Salinity: 9000.00 ppm

Filter Cake: inches

Recovery Information

Recovery Table

Length ft	Description	Volume bbl
5.00	Mud - Oil scum, 100%M	0.025

Total Length: 5.00 ft Total Volume: 0.025 bbl

Num Fluid Samples: 0

Num Gas Bombs: 0

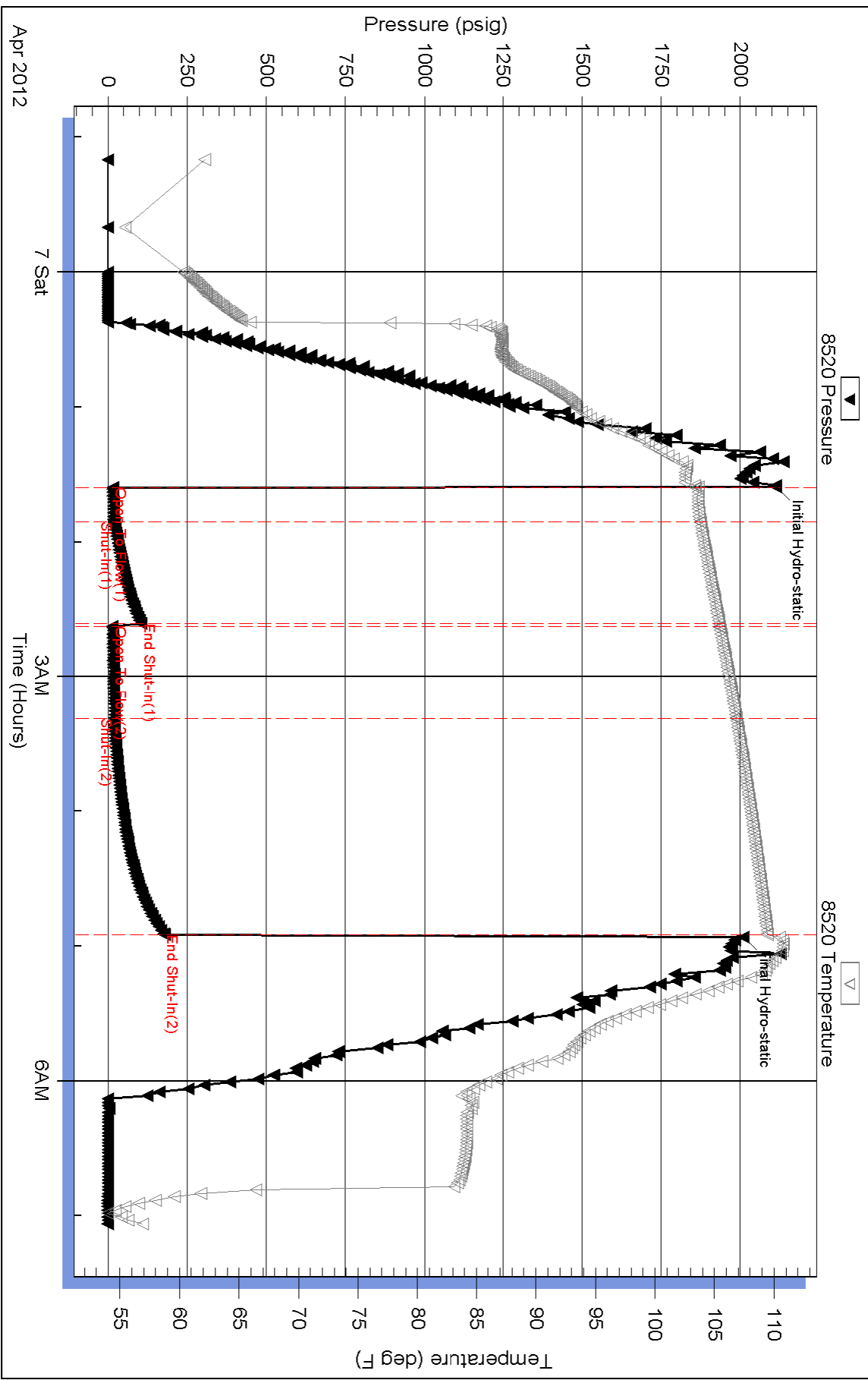
Serial #:

Laboratory Name:

Laboratory Location:

Recovery Comments:

Pressure vs. Time



Serial #: 8354

Inside

Strata Exploration Inc.

Richardson #1-3

DST Test Number: 2

