



DRILL STEM TEST REPORT

Prepared For: **LB Exploration**

2135 2nd Road
Holyrood, Kansas 67460

ATTN: Steven Peterson

14/32S/14W/Barber

Larkin 14

Start Date: 2011.10.02 @ 14:06:00

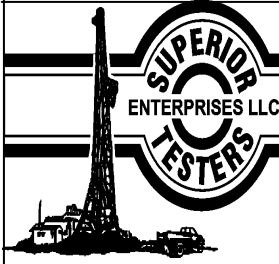
End Date: 2011.10.02 @ 21:38:00

Job Ticket #: 18777 DST #: 2

Superior Testers Enterprises LLC
PO Box 138 Great Bend KS 67530
1-800-792-6902

Printed: 2011.10.02 @ 20:06:57

LB Exploration
Larkin 14
14/32S/14W/Barber
DST # 2
Elgin
2011.10.02



DRILL STEM TEST REPORT

LB Exploration
2135 2nd Road
Holyrood, Kansas 67460
ATTN: Steven Peterson

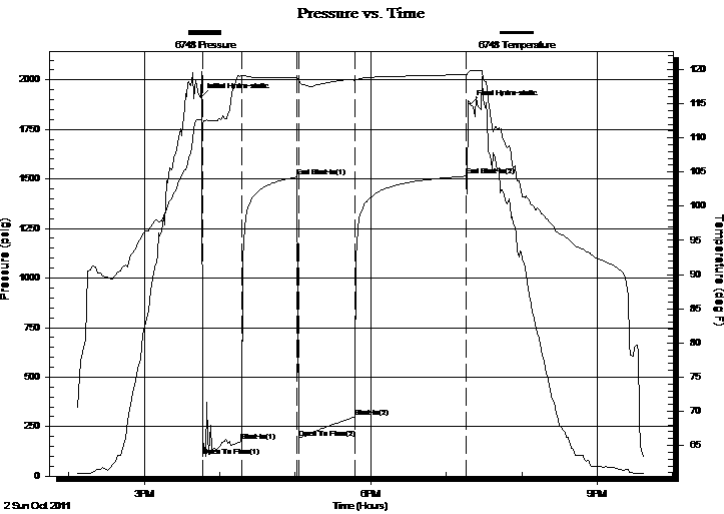
Larkin 14
14/32S/14W/Barber
Job Ticket: 18777 **DST#: 2**
Test Start: 2011.10.02 @ 14:06:00

GENERAL INFORMATION:

Formation: **Elgin**
Deviated: No Whipstock: ft (KB) Test Type: Conventional Bottom Hole (Initial)
Time Tool Opened: 15:46:30 Tester: Ken Swinney
Time Test Ended: 21:38:00 Unit No: 3325 Pratt/96
Interval: 4008.00 ft (KB) To 4062.00 ft (KB) (TVD) Reference Elevations: 2010.00 ft (KB)
Total Depth: 4062.00 ft (KB) (TVD) 1997.00 ft (CF)
Hole Diameter: 7.88 inches Hole Condition: Fair KB to GR/CF: 13.00 ft

Serial #: 6748 Outside
Press @ Run Depth: 299.74 psig @ 4058.70 ft (KB) Capacity: 5000.00 psig
Start Date: 2011.10.02 End Date: 2011.10.02 Last Calib.: 2011.10.02
Start Time: 14:06:00 End Time: 21:38:00 Time On Btm: 2011.10.02 @ 15:45:00
Time Off Btm: 2011.10.02 @ 19:19:00

TEST COMMENT: 1ST Open 30 Minutes/Fair blow /Blow to bottom of bucket in 19 minutes
1ST Shut In 45 Minutes/No blow back
2ND Open 45 Minutes/Fair blow /Blow to bottom of bucket in 25 minutes
2ND Shut In 90 Minutes/No blow back



PRESSURE SUMMARY

Time (Min.)	Pressure (psig)	Temp (deg F)	Annotation
0	1910.94	112.64	Initial Hydro-static
2	99.21	112.09	Open To Flow (1)
32	176.11	119.05	Shut-In(1)
77	1509.54	118.82	End Shut-In(1)
78	193.70	118.28	Open To Flow (2)
122	299.74	118.33	Shut-In(2)
211	1514.28	119.28	End Shut-In(2)
214	1875.74	119.85	Final Hydro-static

Recovery

Length (ft)	Description	Volume (bbl)
100.00	Mud 100%	1.46
365.00	Lightly gassy muddy w ater	5.34
0.00	Gas 2% Mud 18% Water 80%	0.00
0.00	Recovery chlorides 125000 ppm	0.00

Gas Rates

Choke (inches)	Pressure (psig)	Gas Rate (Mcf/d)
----------------	-----------------	------------------



DRILL STEM TEST REPORT

LB Exploration
 2135 2nd Road
 Holyrood, Kansas 67460
 ATTN: Steven Peterson

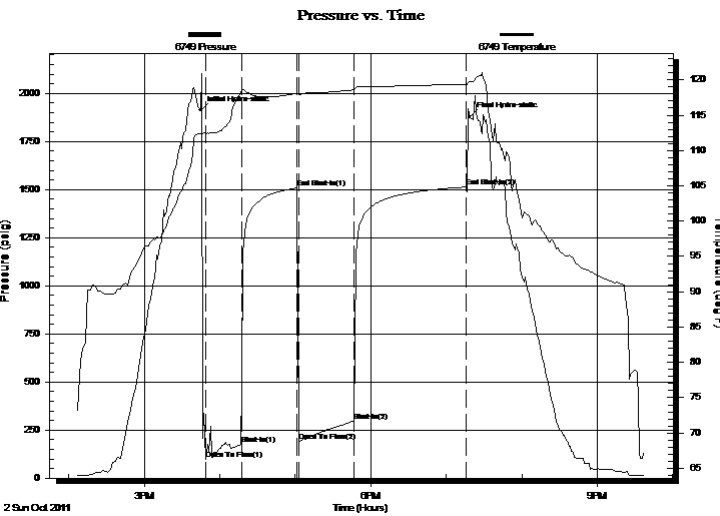
Larkin 14
14/32S/14W/Barber
 Job Ticket: 18777 **DST#: 2**
 Test Start: 2011.10.02 @ 14:06:00

GENERAL INFORMATION:

Formation: **Elgin**
 Deviated: No Whipstock: ft (KB)
 Time Tool Opened: 15:46:30
 Time Test Ended: 21:38:00
 Interval: **4008.00 ft (KB) To 4062.00 ft (KB) (TVD)**
 Total Depth: 4062.00 ft (KB) (TVD)
 Hole Diameter: 7.88 inches Hole Condition: Fair
 Test Type: Conventional Bottom Hole (Initial)
 Tester: Ken Swinney
 Unit No: 3325 Pratt/96
 Reference Elevations: 2010.00 ft (KB)
 1997.00 ft (CF)
 KB to GR/CF: 13.00 ft

Serial #: 6749 Inside
 Press @ Run Depth: 1513.47 psig @ 4057.70 ft (KB) Capacity: 5000.00 psig
 Start Date: 2011.10.02 End Date: 2011.10.02 Last Calib.: 2011.10.02
 Start Time: 14:06:00 End Time: 21:37:30 Time On Btm: 2011.10.02 @ 15:44:30
 Time Off Btm: 2011.10.02 @ 19:18:30

TEST COMMENT: 1ST Open 30 Minutes/Fair blow /Blow to bottom of bucket in 19 minutes
 1ST Shut In 45 Minutes/No blow back
 2ND Open 45 Minutes/Fair blow /Blow to bottom of bucket in 25 minutes
 2ND Shut In 90 Minutes/No blow back



PRESSURE SUMMARY

Time (Min.)	Pressure (psig)	Temp (deg F)	Annotation
0	1912.06	112.36	Initial Hydro-static
4	98.62	112.41	Open To Flow (1)
33	176.54	118.35	Shut-In(1)
77	1508.50	118.12	End Shut-In(1)
78	193.03	117.86	Open To Flow (2)
122	298.40	118.61	Shut-In(2)
211	1513.47	119.39	End Shut-In(2)
214	1877.60	119.69	Final Hydro-static

Recovery

Length (ft)	Description	Volume (bbl)
100.00	Mud 100%	1.46
365.00	Lightly gassy muddy w ater	5.34
0.00	Gas 2% Mud 18% Water 80%	0.00
0.00	Recovery chlorides 125000 ppm	0.00

Gas Rates

	Choke (inches)	Pressure (psig)	Gas Rate (Mcf/d)



DRILL STEM TEST REPORT

TOOL DIAGRAM

LB Exploration
 2135 2nd Road
 Holyrood, Kansas 67460
 ATTN: Steven Peterson

Larkin 14
14/32S/14W/Barber
 Job Ticket: 18777 **DST#: 2**
 Test Start: 2011.10.02 @ 14:06:00

Tool Information

Drill Pipe:	Length: 4006.00 ft	Diameter: 3.88 inches	Volume: 58.58 bbl	Tool Weight:	2000.00 lb
Heavy Wt. Pipe:	Length: 0.00 ft	Diameter: 0.00 inches	Volume: 0.00 bbl	Weight set on Packer:	20000.00 lb
Drill Collar:	Length: 0.00 ft	Diameter: 0.00 inches	Volume: 0.00 bbl	Weight to Pull Loose:	50000.00 lb
			<u>Total Volume: 58.58 bbl</u>	Tool Chased	0.00 ft
Drill Pipe Above KB:	26.75 ft			String Weight: Initial	44000.00 lb
Depth to Top Packer:	4008.00 ft			Final	46000.00 lb
Depth to Bottom Packer:	ft				
Interval between Packers:	53.70 ft				
Tool Length:	82.45 ft				
Number of Packers:	2	Diameter: 6.75 inches			

Tool Comments:

Tool Description	Length (ft)	Serial No.	Position	Depth (ft)	Accum. Lengths
Shut-in tool	5.00			3984.25	
Hydraulic tool	5.00			3989.25	
Change over sub	0.75			3990.00	
Jars	6.00			3996.00	
Safety Joint	2.00			3998.00	
Packer	5.00			4003.00	28.75 Bottom Of Top Packer
Packer	5.00			4008.00	
Anchor	5.00			4013.00	
change over sub	0.75			4013.75	
drill pipe	31.20			4044.95	
change over sub	0.75			4045.70	
anchor	11.00			4056.70	
Recorder	1.00	6749	Inside	4057.70	
Recorder	1.00	6748	Outside	4058.70	
bull plug	3.00			4061.70	53.70 Bottom Packers & Anchor

Total Tool Length: 82.45



DRILL STEM TEST REPORT

FLUID SUMMARY

LB Exploration
 2135 2nd Road
 Holyrood, Kansas 67460
 ATTN: Steven Peterson

Larkin 14
14/32S/14W/Barber
 Job Ticket: 18777 **DST#: 2**
 Test Start: 2011.10.02 @ 14:06:00

Mud and Cushion Information

Mud Type: Gel Chem	Cushion Type:	Oil API:	deg API
Mud Weight: 9.00 lb/gal	Cushion Length: ft	Water Salinity:	ppm
Viscosity: 56.00 sec/qt	Cushion Volume: bbl		
Water Loss: 9.60 in ³	Gas Cushion Type:		
Resistivity: ohm.m	Gas Cushion Pressure: psig		
Salinity: 6200.00 ppm			
Filter Cake: 1.00 inches			

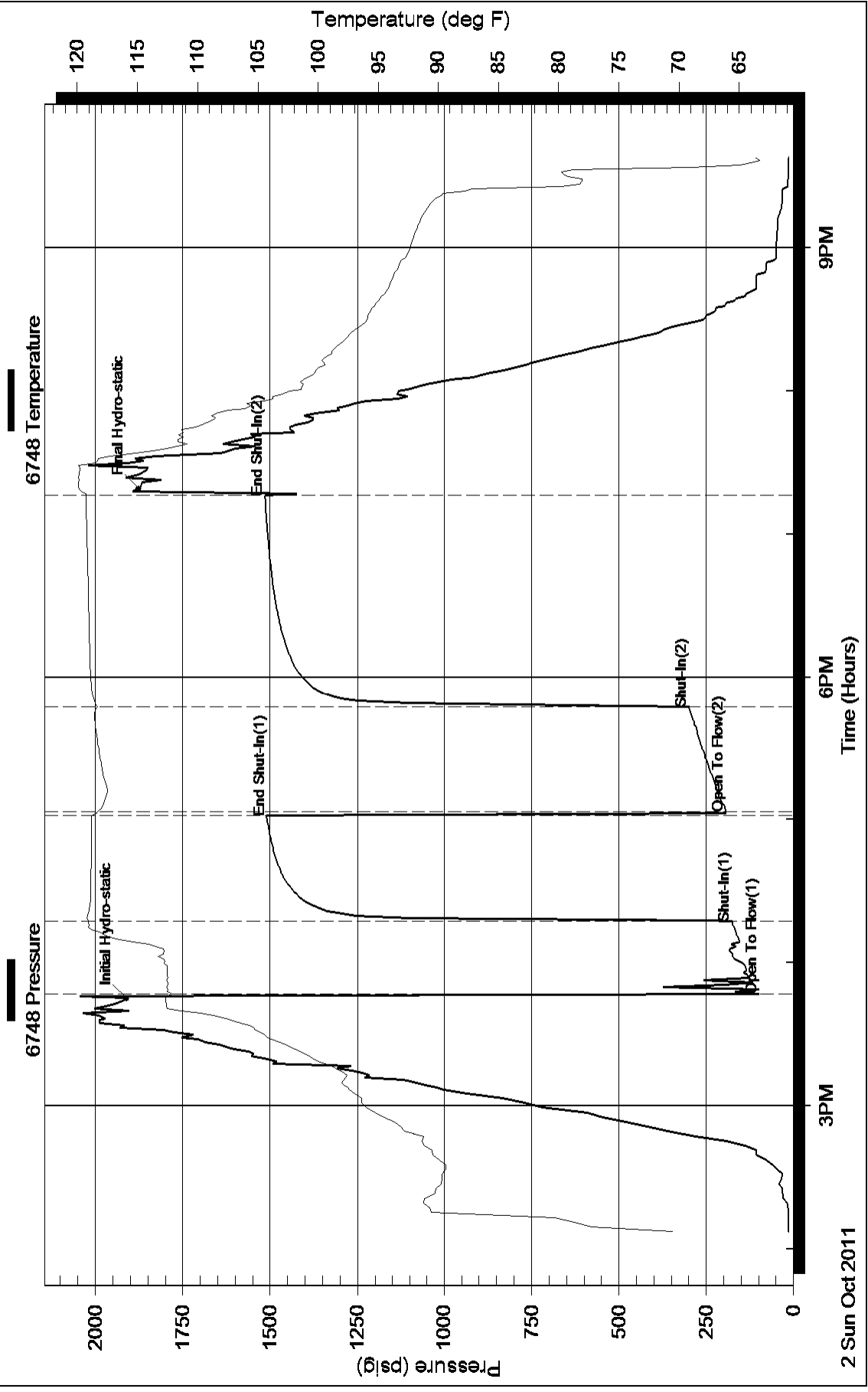
Recovery Information

Recovery Table

Length ft	Description	Volume bbl
100.00	Mud 100%	1.462
365.00	Lightly gassy muddy water	5.338
0.00	Gas 2% Mud 18% Water 80%	0.000
0.00	Recovery chlorides 125000 ppm	0.000

Total Length: 465.00 ft Total Volume: 6.800 bbl
 Num Fluid Samples: 0 Num Gas Bombs: 0 Serial #:
 Laboratory Name: Laboratory Location:
 Recovery Comments:

Pressure vs. Time



Pressure vs. Time

