

M. Bradford Rine

Consulting Geologist, Licensed and Certified

Scale 1:240 (5"-100') Imperial
Measured Depth (Log)

Well Name: REED #1-20
Location: S20-NW-NW-SW, Section 20 - T07S - R18W
License Number: AP: 15-162-24018-0000
Spud Date: March 25, 2012
Surface Coordinates: 2150 FSL & 500' FWL
Region: Rooks Co., Kansas
Drilling Completed: April 01, 2012

Bottom Hole: Vertical Wellbore
Casing Set: Wildcat
Coordinates: 2150 Ft. K.B. Elevation (ft): 1923 Ft.
Ground Elevation (ft): 1972 Ft. **To:** 3500 Ft. **Total Depth (ft):** RTD 3500 Ft. LTD 3500 Ft.
Logged Interval (ft): 2170 Ft.
Drilling: Arbutckle
Type of Forming Fluid: Chemical
 Printed by WellSight Log Viewer from WellSight Systems 1-800-447-1534 www.WellSight.com

Company: MURFIN DRILLING COMPANY, INC.
Address: 250 North Water, Suite #300
 Wichita, Kansas 67202 & 1216

Geologist:
Name: M. Bradford Rine
Company: Consulting Geologist, Kansas Lic. #204, Wyo #189, AAPG Cert. #2647
Address: 100 South Main, Suite #415
 Wichita, Kansas 67202

Remarks:
 Based on sample observations, drill stem test results, and electric log evaluation, it was the decision of the Operator, to run production casing for further testing in the "Reed #1-20", on April 02, 2012.

Murfin Drilling Company, Inc.	John O. Farmer	Central Operating, Inc.
Reed #1-20	C-NUW-NE	Parker #1 (Well B)
2150FSL & 550FWL	Sec: 15-T07S-R18W	Sec: 15-T07S-R18W
1923 Ft. Log	1923 Ft. Log	1923 Ft. Log
Formations	Sample Log	SS Datum
Anhydrite	1367	1368
Banhydrite	1390	1400
Topeka	2865	2866
Heebner Sh.	3071	3073
Toronto	3101	3095
Lansing	3108	3110
Base/Kansas City	3327	3338
Arbutckle	3438	3429
Total Depth	3500	3500

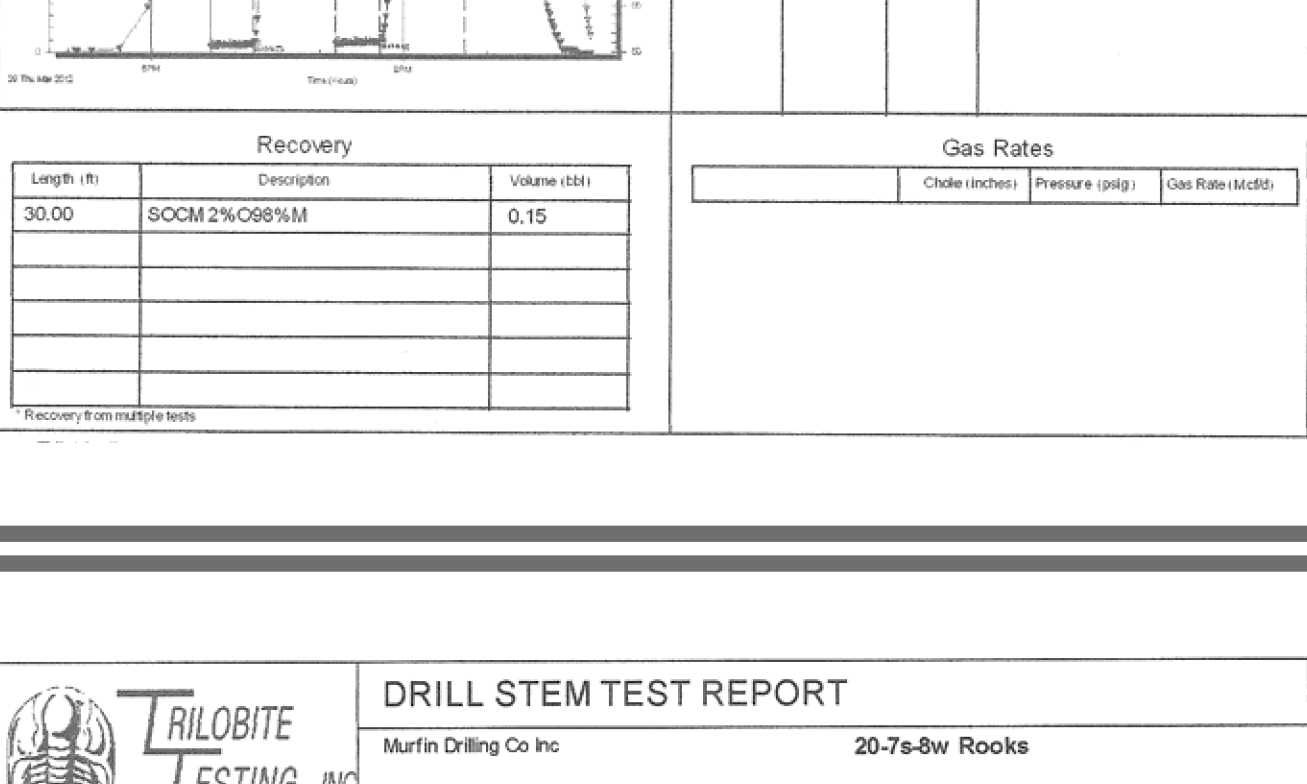
Drilling Information & Daily Drilling Status
Rig: Murfin Drilling #21
Pump: EmSCO DB-550 6 x 16
Drawworks: National T-370
Collars: 561 ft. of 2 1/4" x 6-11/16"
Drillpipe: 4-1/2" 16.56 Yds
Toolpusher: Juan Tinoco
Mud: Morgan Mud (Cade Lines)
Gas Detector: None
Drill Stem Tests: Tribolite (Ray Schwager)
Logs: Log-Temp (R. Barnhart)
Water: Pond NE of Lease (Murfin Tank)
Company Representatives:
Officer: Dean
Field: John Gerstner

Operations/Depth/Comments
 03-24-12 MRT
 03-25-12 MRT RU, Spud @ 0'
 03-26-12 WOC @ 267'
 03-27-12 Drig @ 1655'
 03-28-12 On Bottom/DST #1 @ 3140'
 03-29-12 On Bottom/DST #3 @ 3203'
 03-31-12 TH/Bit @ 3226'
 04-01-12 On Bottom/DST #6 @ 3436'
 04-02-12 Run Csg and Casing @ 3500 ft.

Casing Record, Bit Record, Deviation Surveys
Conductor: None
Surface: DT: 4 1/4 hrs (woc). CT: none. Dev.: 1" @ 267'. Spud @ 9:15PM 3/25/12. Ran 6 fts of 2 3/8" x 254", 8 5/8" surf csg set @ 267'. Allied cmt w/ 185 sx Comm 3%CC 2% Gel. PD @ 2:45AM 3/26/12. Cmt circ.
Production: Ran 85 fts of 5 1/2" prod csg set @ 3500'. (Swift) Cement With 150 sxs of AA-2. PD @ 10:30AM 4/02. PC @ 1409'. 30 sx RH, 20 sx MH. Rig Released 2:30PM 4/02/12

No.	Size	Make	Model	Depth In	Depth Out	Time
1	12-1/4	Mt	M	267	2-1/4	3500'
2	7-7/8	F12Y	rr	267	68-1/2	

DEVIATION SURVEYS:
 Deviation: Depth: 12" 781' 1"
 Deviation: Depth: 1" 3500'

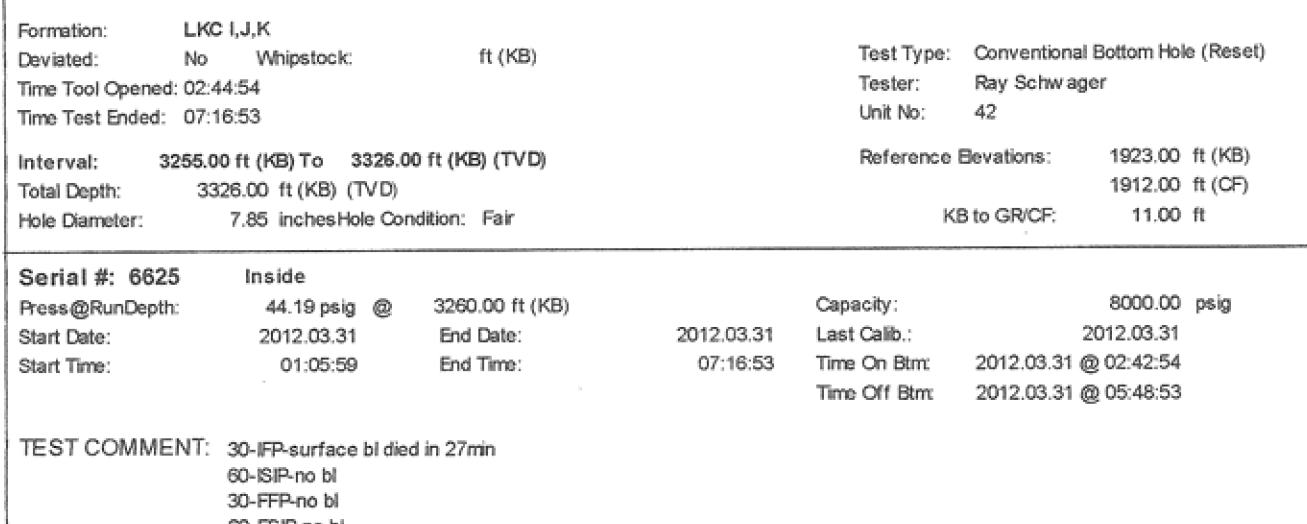


Length (ft)	Description	Volume (cu)
20.00	OC	0.10
70.00	OC&CM 10%NOC&MLM	0.34

Time (Min)	Pressure (psi)	Temp (deg F)	Annotation
0	1488.01	100.19	Initial Hydro-static
32	25.34	99.09	Open to Flow (1)
33	39.41	100.29	Shut-In (1)
92	1036.83	101.19	End Shut-In (1)
101	1036.83	101.19	Open to Flow (2)
122	64.19	102.33	Shut-In (2)
247	993.43	101.71	End Shut-In (2)
248	1471.09	101.01	Final Hydro-static

Serial #:	6625	Inside
Press@Run/Depth:	44.74 psig @ 3074.00 ft (KB)	
Start Date:	2012.03.29	End Date: 2012.03.29
Start Time:	17:02:16	End Time: 09:56:40

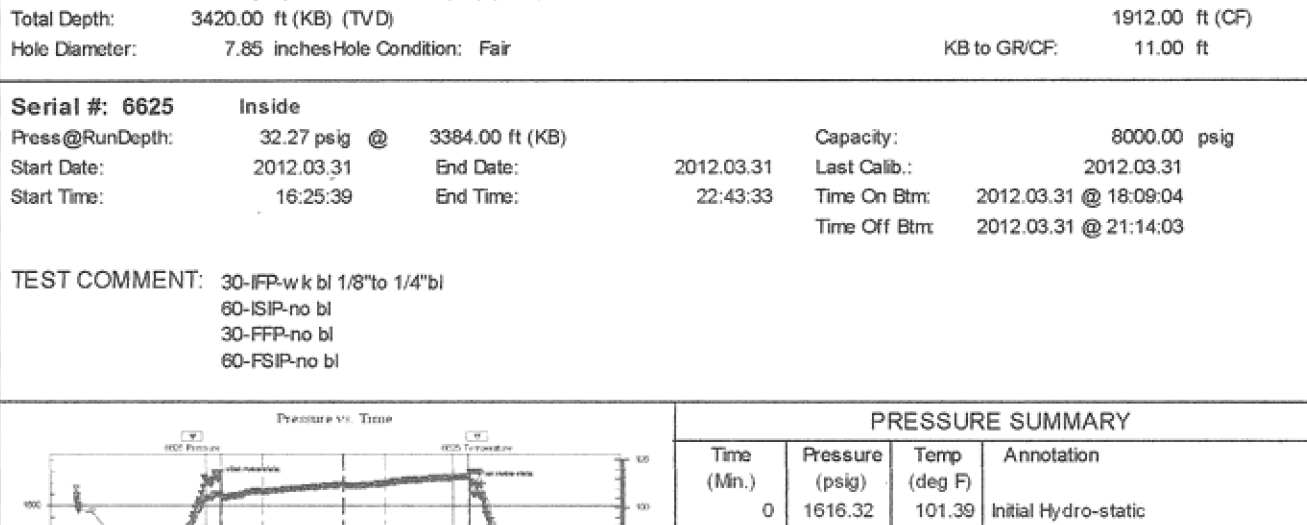
TEST COMMENT: 30-FP-surf to 14" thru-out
 60-FP-Pro bit
 60-FP-Pro bit



Length (ft)	Description	Volume (cu)
30.00	SOCM 10%NOC&MLM	0.15

Time (Min)	Pressure (psi)	Temp (deg F)	Annotation
0	1479.33	97.49	Initial Hydro-static
3	25.12	97.21	Open to Flow (1)
93	1049.59	98.85	End Shut-In (1)
94	40.31	98.12	Open to Flow (2)
122	64.19	102.33	Shut-In (2)
247	1104.49	100.23	End Shut-In (2)
251	1405.12	99.84	Final Hydro-static

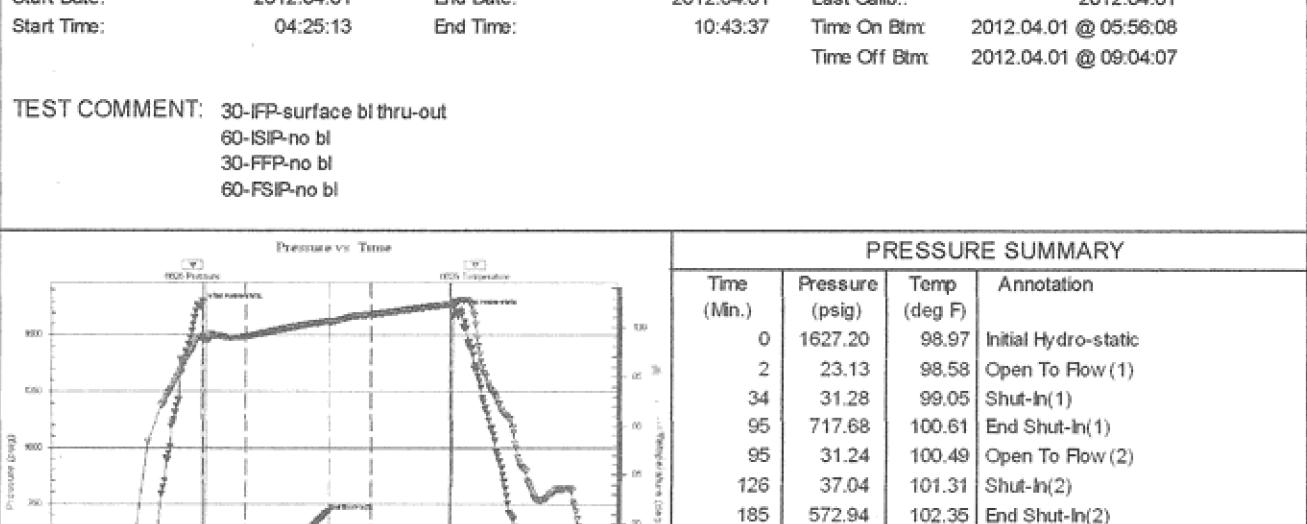
TEST COMMENT: 30-FP-surf to 14" thru-out
 60-FP-Pro bit
 60-FP-Pro bit



Length (ft)	Description	Volume (cu)
5.00	OC	0.02
65.00	OC&CM 10%NOC&MLM	0.32

Time (Min)	Pressure (psi)	Temp (deg F)	Annotation
0	1455.38	96.53	Initial Hydro-static
3	21.88	96.28	Open to Flow (1)
94	1118.63	96.15	End Shut-In (1)
94	40.31	98.12	Open to Flow (2)
122	64.19	102.33	Shut-In (2)
247	1104.49	100.23	End Shut-In (2)
251	1405.12	99.84	Final Hydro-static

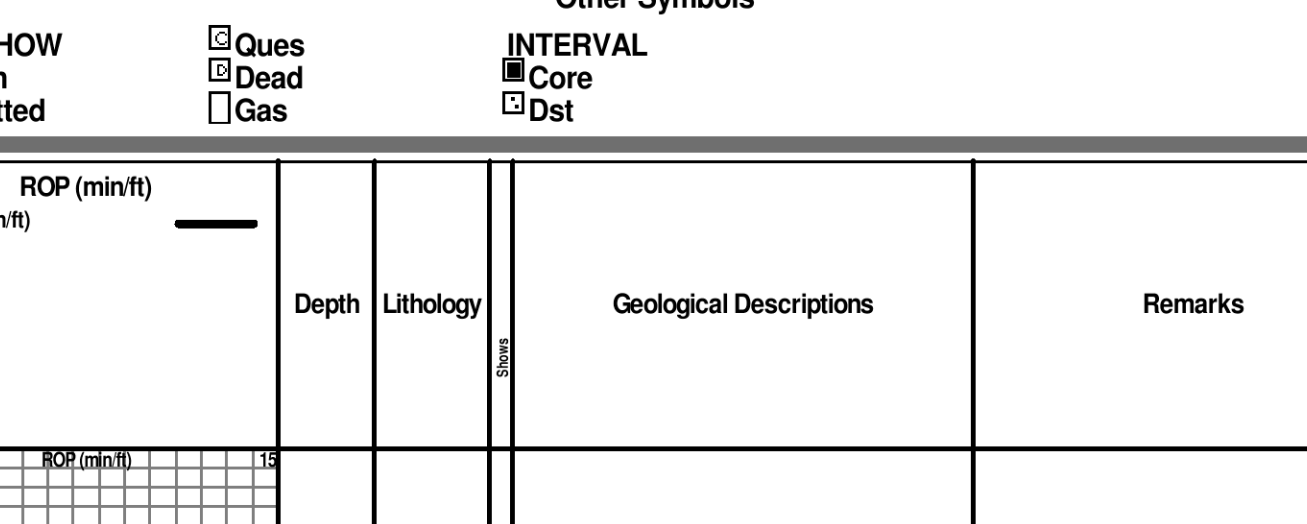
TEST COMMENT: 30-FP-surf to 14" thru-out
 60-FP-Pro bit
 60-FP-Pro bit



Length (ft)	Description	Volume (cu)
20.00	SOCM 10%NOC&MLM	0.10

Time (Min)	Pressure (psi)	Temp (deg F)	Annotation
0	1542.80	102.38	Initial Hydro-static
2	25.58	102.19	Open to Flow (1)
91	1140.84	103.43	End Shut-In (1)
92	39.38	103.18	Open to Flow (2)
122	64.19	102.33	Shut-In (2)
186	1130.29	103.88	End Shut-In (2)
187	1523.27	104.01	Final Hydro-static

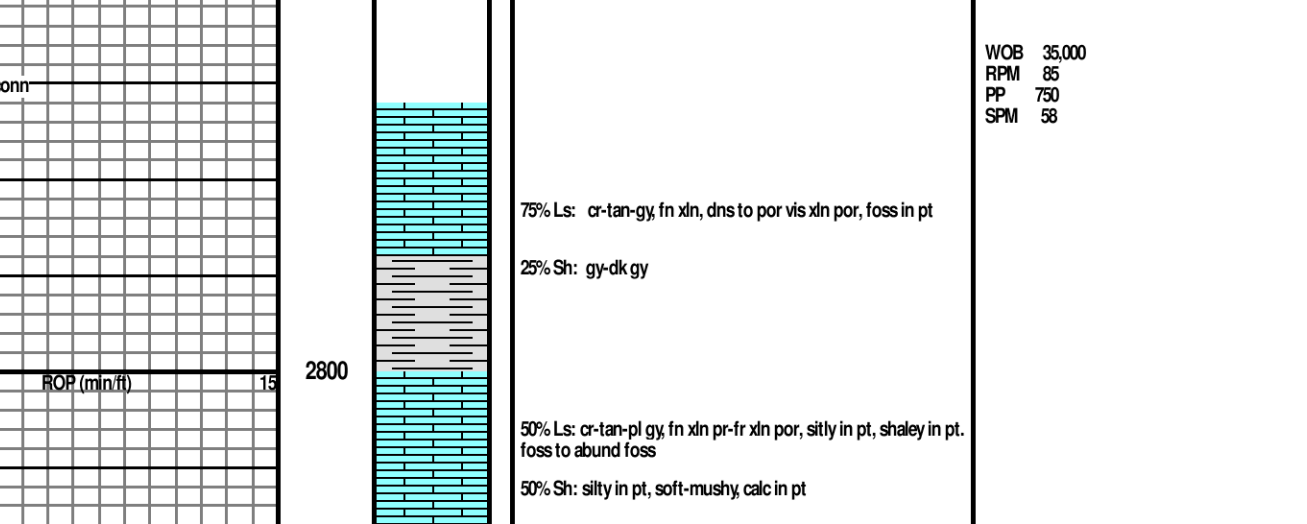
TEST COMMENT: 30-FP-surf to 14" thru-out
 60-FP-Pro bit
 60-FP-Pro bit



Length (ft)	Description	Volume (cu)
20.00	SOCM 10%NOC&MLM	0.10

Time (Min)	Pressure (psi)	Temp (deg F)	Annotation
0	1627.20	98.67	Initial Hydro-static
3	24.85	101.03	Open to Flow (1)
33	28.81	101.67	Shut-In (1)
94	1118.63	96.15	End Shut-In (1)
94	40.31	98.12	Open to Flow (2)
122	64.19	102.33	Shut-In (2)
247	1104.49	100.23	End Shut-In (2)
251	1405.12	99.84	Final Hydro-static

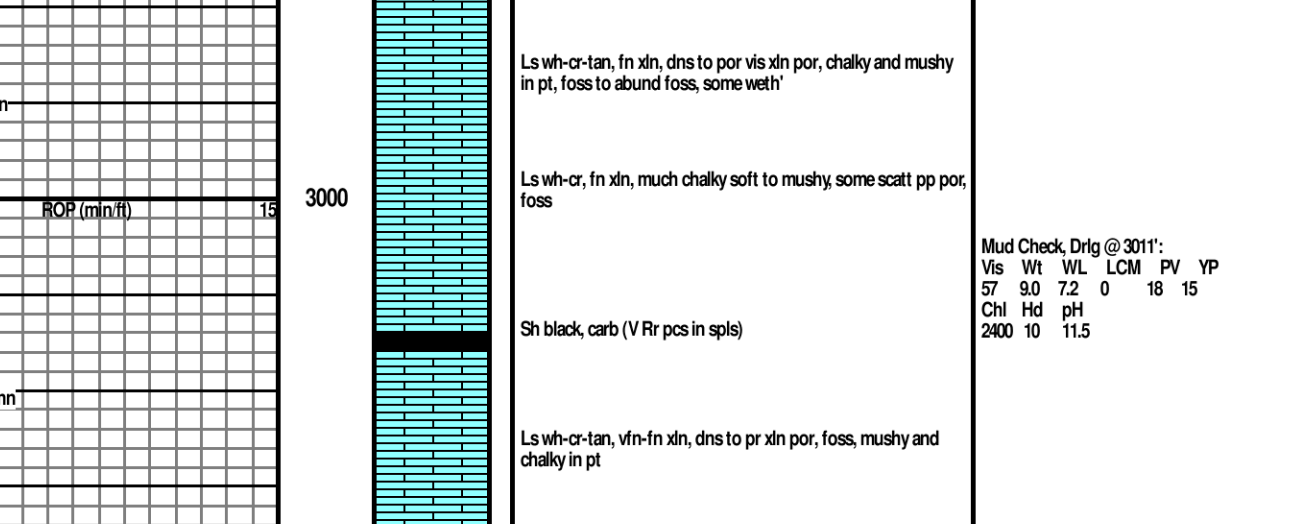
TEST COMMENT: 30-FP-surf to 14" thru-out
 60-FP-Pro bit
 60-FP-Pro bit



Length (ft)	Description	Volume (cu)
20.00	SOCM 10%NOC&MLM	0.10

Time (Min)	Pressure (psi)	Temp (deg F)	Annotation
0	1595.50	103.76	Initial Hydro-static
3	28.81	101.67	Open to Flow (1)
94	1118.63	96.15	End Shut-In (1)
94	40.31	98.12	Open to Flow (2)
122	64.19	102.33	Shut-In (2)
247	1104.49	100.23	End Shut-In (2)
251	1405.12	99.84	Final Hydro-static

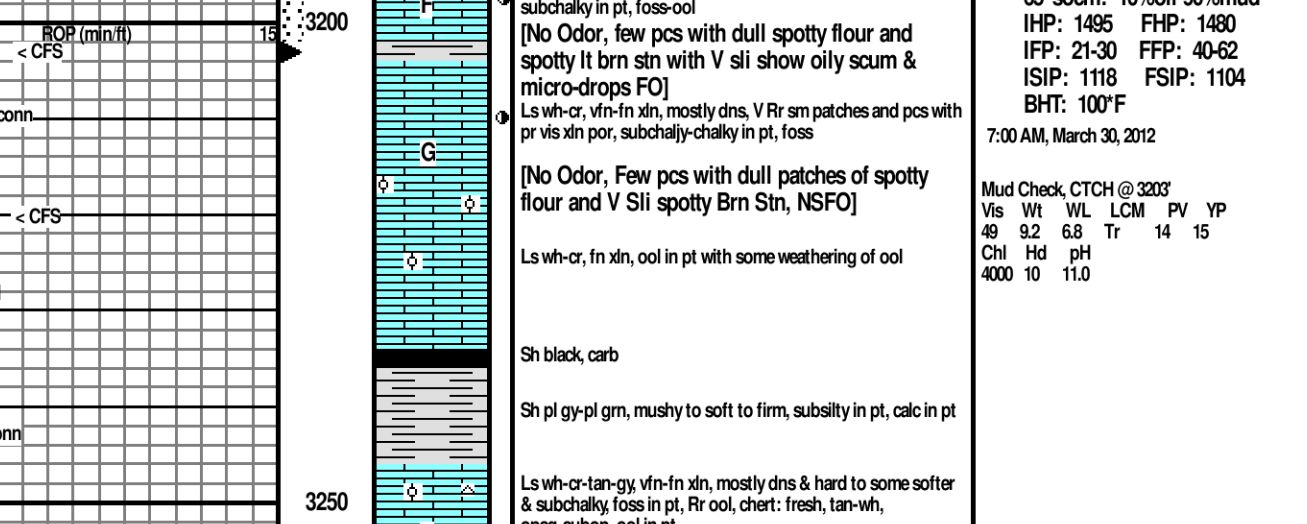
TEST COMMENT: 30-FP-surf to 14" thru-out
 60-FP-Pro bit
 60-FP-Pro bit



Length (ft)	Description	Volume (cu)
20.00	SOCM 10%NOC&MLM	0.10

Time (Min)	Pressure (psi)	Temp (deg F)	Annotation
0	1627.20	98.67	Initial Hydro-static
3	24.85	101.03	Open to Flow (1)
94	1118.63	96.15	End Shut-In (1)
94	40.31	98.12	Open to Flow (2)
122	64.19	102.33	Shut-In (2)
247	1104.49	100.23	End Shut-In (2)
251	1405.12	99.84	Final Hydro-static

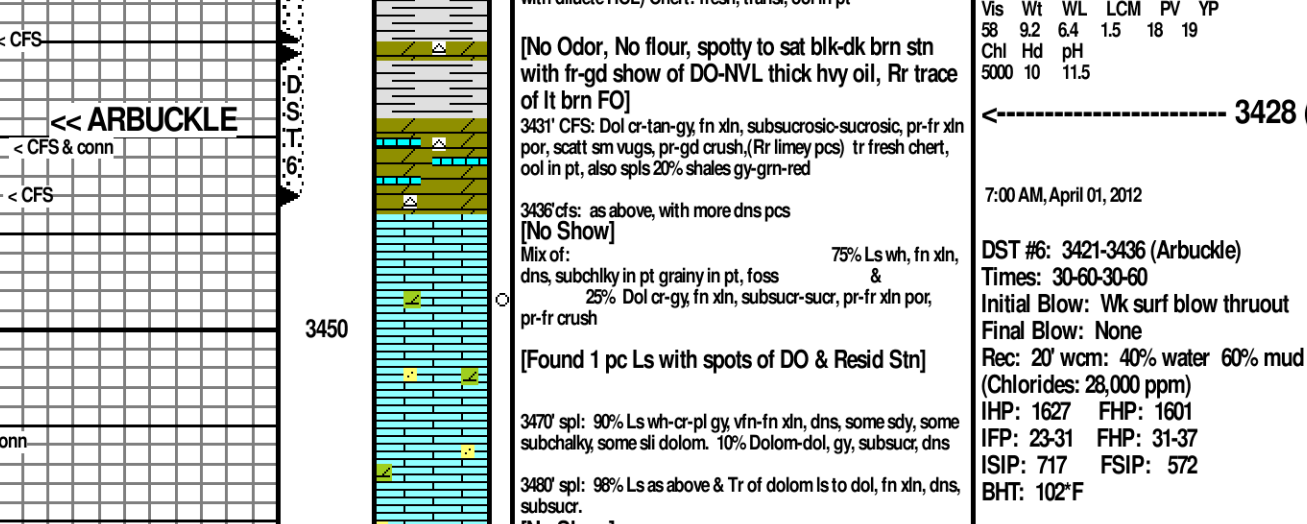
TEST COMMENT: 30-FP-surf to 14" thru-out
 60-FP-Pro bit
 60-FP-Pro bit



Length (ft)	Description	Volume (cu)
20.00	SOCM 10%NOC&MLM	0.10

Time (Min)	Pressure (psi)	Temp (deg F)	Annotation
0	1595.50	103.76	Initial Hydro-static
3	28.81	101.67	Open to Flow (1)
94	1118.63	96.15	End Shut-In (1)
94	40.31	98.12	Open to Flow (2)
122	64.19	102.33	Shut-In (2)
247	1104.49	100.23	End Shut-In (2)
251	1405.12	99.84	Final Hydro-static

TEST COMMENT: 30-FP-surf to 14" thru-out
 60-FP-Pro bit
 60-FP-Pro bit



Length (ft)	Description	Volume (cu)
20.00	SOCM 10%NOC&MLM	0.10

Time (Min)	Pressure (psi)	Temp (deg F)	Annotation
0	1542.80	102.38	Initial Hydro-static
2	25.58	102.19	Open to Flow (1)
91	1140.84	103.43	End Shut-In (1)
92	39.38	103.18	Open to Flow (2)
122	64.19	102.33	Shut-In (2)
186	1130.29	103.88	End Shut-In (2)
187	1523.27	104.01	Final Hydro-static

TEST COMMENT: 30-FP-surf to 14" thru-out
 60-FP-Pro bit
 60-FP-Pro bit

Length (ft)	Description	Volume (cu)
5.00	OC	0.02
65.00	OC&CM 10%NOC&MLM	0.32

Time (Min)	Pressure (psi)	Temp (deg F)	Annotation
0	1479.33	97.49	Initial Hydro-static
3	25.12	97.21	Open to Flow (1)
93	1049.59	98.85	End Shut-In (1)
94	40.31	98.12	Open to Flow (2)
122	64.19	102.33	Shut-In (2)
247	1104.49	100.23	End Shut-In (2)
251	1405.12	99.84	Final Hydro-static

TEST COMMENT: 30-FP-surf to 14" thru-out
 60-FP-Pro bit
 60-FP-Pro bit

Length (ft)	Description	Volume (cu)
20.00	SOCM 10%NOC&MLM	0.10

Time (Min)	Pressure (psi)	Temp (deg F)	Annotation
0	1542.80	102.38	Initial Hydro-static
2	25.58	102.19	Open to Flow (1)
91	1140.84	103.43	End Shut-In (1)
92	39.38	103.18	Open to Flow (2)
122	64.19	102.33	Shut-In (2)
186	1130.29	103.88	End Shut-In (2)
187	1523.27	104.01	Final Hydro-static

TEST COMMENT: 30-FP-surf to 14" thru-out
 60-FP-Pro bit
 60-FP-Pro bit

Length (ft)	Description	Volume (cu)
20.00	SOCM 10%NOC&MLM	0.10

Time (Min)	Pressure (psi)	Temp (deg F)	Annotation
0	1627.20	98.67	Initial Hydro-static
3	24.85	101.03	Open to Flow (1)
33	28.81	101.67	Shut-In (1)
94	1118.63	96.15	End Shut-In (1)
94	40.31	98.12	Open to Flow (2)
122	64.19	102.33	Shut-In (2)
247	1104.49	100.23	End Shut-In (2)
251	1405.12	99.84	Final Hydro-static

TEST COMMENT: 30-FP-surf to 14" thru-out
 60-FP-Pro bit
 60-FP-Pro bit

