

# AUSTIN B. KLAUS



**Cell 785.650.3629**  
**Work 785.483.3145**  
**Ext 225**

**PO BOX 352**  
**Russell, KS 67665**  
**austin.klaus@johnofarmer.com**

**Scale 1:240 (5"=100') Imperial**  
**Measured Depth Log**

**Well Name:** Norris A #1  
**Location:** Sec. 12 T4S R19W  
**License Number:** API #15-147-20,674-00-00  
**Spud Date:** 5/2/2012  
**Surface Coordinates:** 2030' FSL & 930' FEL

**Region:** Kansas  
**Drilling Completed:** 5/8/2012

**Bottom Hole Vertical well with minimal deviation, same as above**  
**Coordinates:**  
**Ground Elevation (ft):** 1,984'      **K.B. Elevation (ft):** 1,992'  
**Logged Interval (ft):** 2,900'      **To:** RTD      **Total Depth (ft):** RTD: 3,487' LTD: 3,481'  
**Formation:** Topeka-LKC  
**Type of Drilling Fluid:** Chemical (Andy's Mud Co.)

Printed by STRIP.LOG from WellSight Systems 1-800-447-1534 [www.WellSight.com](http://www.WellSight.com)

## OPERATOR

**Company:** John O. Farmer, Inc.  
**Address:** P.O. Box 352  
Russell, KS 67665-0352

## COMMENTS

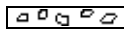
The Norris A #1 well was drilled by Discovery Drilling Rig #1 (Tool pusher: Cliff Mayfield).

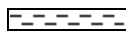



The location for the Norris A #1 was found via 3-D seismic survey. Based on the results of the three drill stem tests that were conducted, and the open hole logs and samples that were evaluated, the decision was made to plug and abandon the Norris A #1 well on 5/8/2012.





Respectfully submitted,

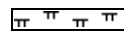
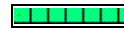
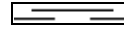
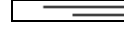
Austin Klaus  
Petroleum Geologist  
John O. Farmer, Inc.

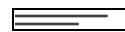



**ROCK TYPES**

-  Anhy
-  Bent
-  Brec
-  Cht


-  Clyst
-  Coal
-  Congl
-  Dol

-  Gyp
-  Igne
-  Lmst
-  Meta

-  Mrlst
-  Salt
-  Shale
-  Shcol

-  Shgy
-  Siltst
-  Ss
-  Till

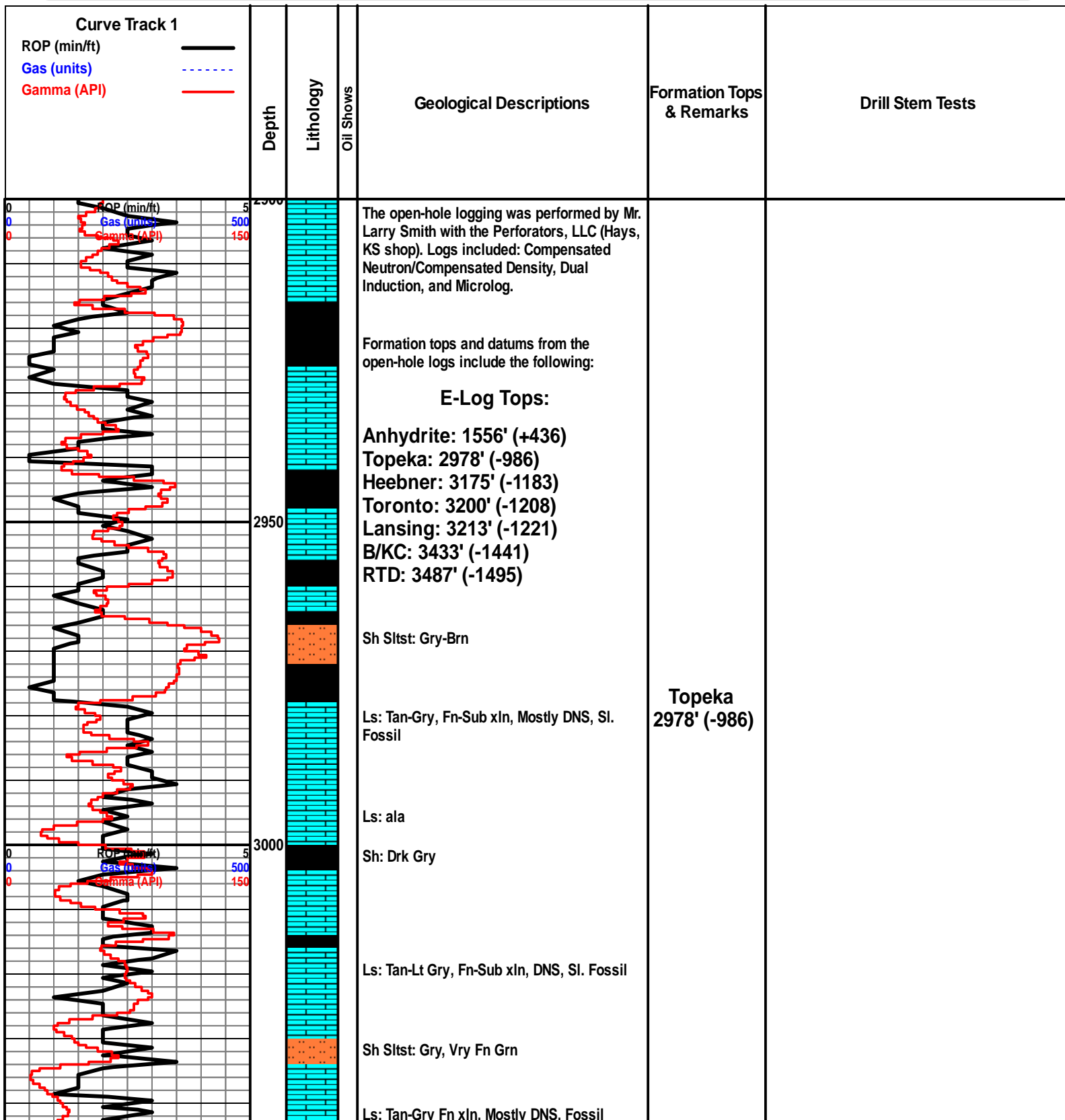
**OTHER SYMBOLS**

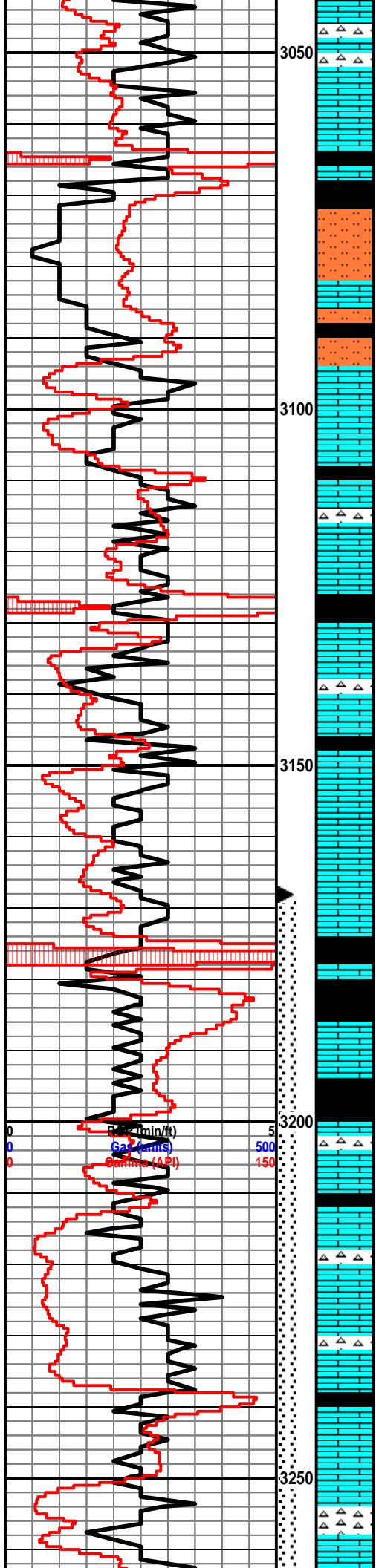
- OIL SHOW**
-  Even
  -  Spotted

-  Ques
-  Dead

- INTERVAL**
-  Dst

- EVENT**
-  Packer





Ls: ala, Hvy Chert, Off Wh.

Ls: ala  
Sh: Drk Gry

Sh Slst: Gry-Grn

Sh: Gry-Brn, Soft

Ls: Off Wh-Tan, Fn-Sub xIn, Sl. Fossil

Ls: ala, Sl. Chert, Off Wh

Sh: Gry-Brn, Soft

Ls: Off Wh.-Tan-Lt Gry, Fn-Sub xIn, Mostly DNS, Sl. Fossil, Sl. Chert, Off Wh.

Ls: ala

Ls: ala

Sh: Blk, Carb, Fissile

Sh: Drk Gry

Ls: Off Wh.-Lt Gry, Fn xIn, Mostly DNS, Sl. Fossil, Sl. Chert, Off Wh.

Sh: Drk Gry-Brn

Ls: Off Wh.-Tan, Fn xIn, Fossil, Sl. Chert Off Wh.

Ls: Off Wh.-Tan, Fn xIn, DNS, Chert, Off Wh, Sl. Chalk

Sh: Gry-Brn

Ls: Off Wh.-Tan, Fn xIn, Mostly DNS, Sl. Chert, Off Wh. Sl. Chalky

**Heebner  
3176'(-1184)**

**Toronto  
3200'(-1208)  
Lansing  
3216'(-1224)**

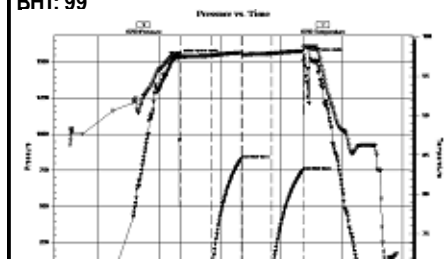
'A'

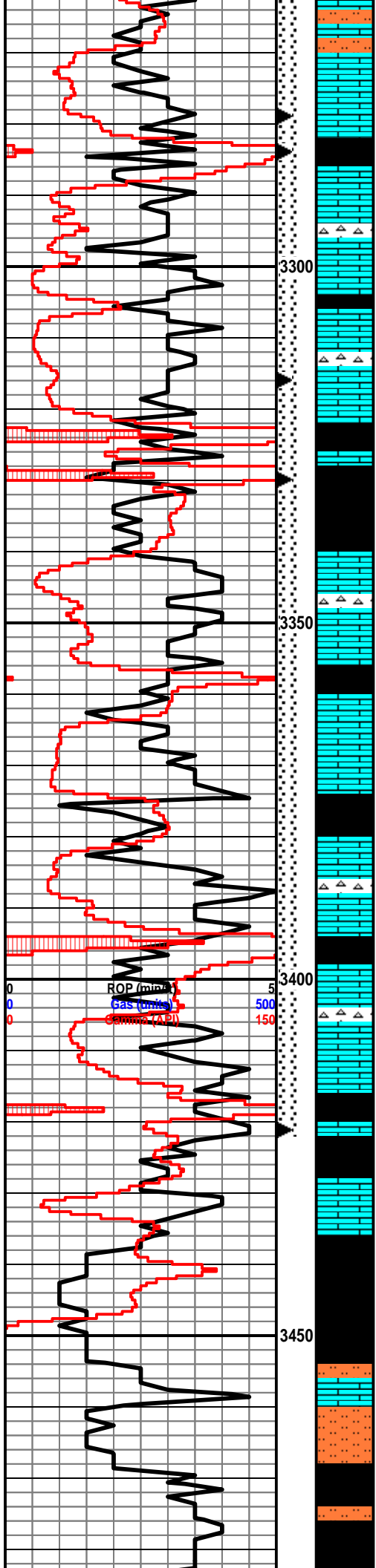
'B'

'C'

**DST #1: 3,168'-3,284'  
Toronto-LKC D  
30"-30"-30"-30"**

IF: weak surface blow  
FF: no blow  
Rec: 60' Mud  
FP: 40-41,43-49#  
SIP: 825-747#  
HP: 1,533-1,541#  
BHT: 99





Sh Siltst: Gry-Brn, Vry Fn Grn

Ls: Off Wh.-Tan, Fn xln, w/ Poor Interpart. porosity, Sl. Oil St. NSFO, No Odor

Sh: Drk Gry-Brn

Ls: Off Wh. Fn. xln, Mostly DNS, Sl. Fossil, Sl. Chert

3300

Sh: Drk Gry-Brn

Ls: Off Wh.-Lt Gry, Fn-Sub xln, Mostly DNS, Chert, Off Wh. Sl. Fossil, Sl. Chalky

Sh: Drk Gry-Blk-Grn

Sh: ala

Ls: Off Wh.-Lt Gry, Fn-Sub xln, Mostly DNS, Chert, Off Wh.

3350

Sh: Gry-Brn-Grn

Ls: Off Wh.-Tan, Fn-Sub xln w/ Scat Pinpoint & Poor Int xln porosity, Sl. Oil St. in porosity, Sl. Odor

Sh: Gry-Brn

Ls: Off Wh.-Tan, Fn xln, w/ poor Int xln porosity, Sl. oil St. in porosity, Sl. Odor, Sl. Chert, Off Wh.

Sh: Drk Gry-Blk

Ls: Off Wh.-Tan, Fn-Sub xln, Sl. Fossil, Sl. Chert, Off Wh.

3400

Sh: Lt Gry-Brn, Soft

Ls: Off Wh.-Tan, Fn-Sub xln, Mostly DNS, Sl. Chert, Off Wh.

Sh: Gry-Brn, Vry Soft

Sh: Gry-Brn-Grn, Soft

3450

Ls: Tan-Lt Gry, Fn-Sub xln, Mostly DNS, Sl. Fossil

Sh Siltst: Gry-Brn-Grn

Sh Siltst: ala

'D'

DST #2: 3,279'-3,330'

LKC E-G

'E'

30"-30"-30"-30"

IF: weak surface blow that died

FF: no blow

Rec: 50' Mud

FP: 38-38, 39-40#

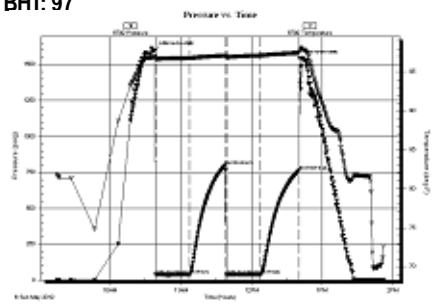
SIP: 799-762#

HP: 1,602-1,543#

BHT: 97

'F'

'G'



'H'

DST #3: 3,316'-3,421'

LKC H-K

'I'

30"-30"-30"-30"

IF: weak surface blow, built to .75"

FF: no blow

Rec: 10' Mud with oil spots

FP: 20-23, 23-27#

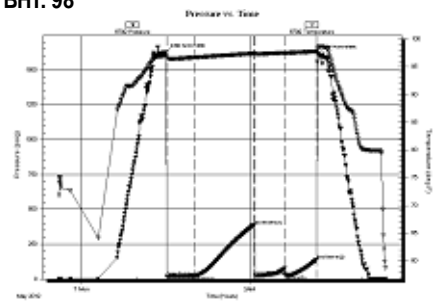
SIP: 385-141#

HP: 1,626-1,618#

BHT: 98

'J'

'K'



'L'

B/KC  
3438'(-1446)

