

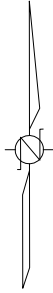
NW/4

NE/4

SW/4

SE/4

# T 20 S - R 29 W SECTION 12



SURFACE OWNER  
FRANK JASPER  
ACCESS ROAD = 461'  
(0.42 AC.)  
DRILL SITE = 1.97 AC.  
TOTAL = 2.39 AC.

SURFACE OWNER  
DEVIN McMILLEN  
ACCESS ROAD = 3762'  
(3.45 AC.)

CENTERLINE PROPOSED  
ACCESS ROAD  
(40' WIDE ROW)  
4223' / 3.87 AC.

EXISTING ROAD (14' WIDE)

NE CORNER OF PAD  
LAT:38°19'21.07"  
LON:100°28'31.80" ELEV: 2812

SE CORNER OF PAD  
LAT:38°19'18.65"  
LON:100°28'31.77" ELEV: 2812

SW CORNER OF PAD  
LAT:38°19'18.61"  
LON:100°28'36.16" ELEV: 2812

NW CORNER OF PAD  
LAT:38°19'21.03"  
LON:100°28'36.20" ELEV: 2812

MAGELLAN PIPELINE

TRACT LINE

SECTION LINE & HWY 23

SECTION LINE

1969'  
F.W.L.

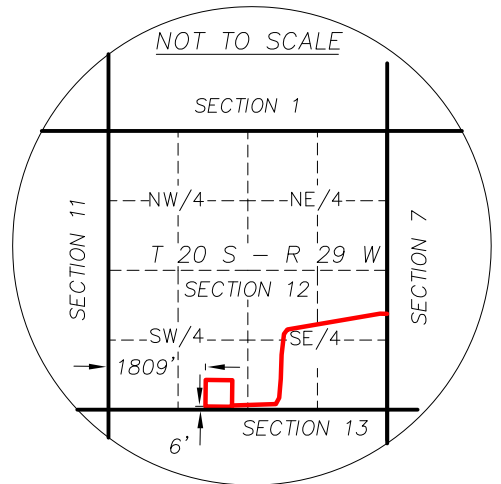
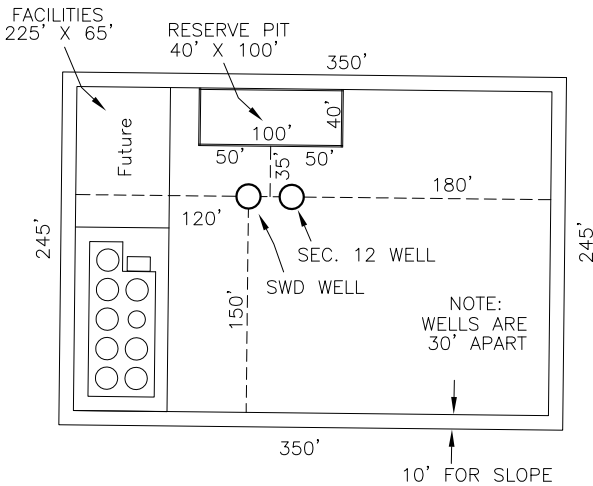
PROPOSED DRILL SITE  
245' X 350' = 1.97 AC.

SEE DETAIL

166' FENCE LINE & SECTION LINE

JASPER 12V-1 SWD  
LAT:38°19'20.21"  
LON:100°28'34.55"  
ELEV: 2812

JASPER 12H-2  
LAT:38°19'20.21"  
LON:100°28'34.18"  
ELEV: 2812



**FINAL COPY**

**CONSTRUCTION PLAT  
SHOWING PROPOSED  
DRILL SITE AND ACCESS ROAD  
ENCANA OIL & GAS (USA) INC.  
JASPER 12V-1 SWD & 12H-2  
LANE COUNTY, KANSAS  
SCALE: 1" = 500'**

ACCESS ROAD = 3.87 AC.  
DRILL SITE = 1.97 AC.

**TOTAL = 5.84 AC.**