

THIS DRAWING DOES NOT REPRESENT A BOUNDARY SURVEY, DISTANCES, COORDINATES AND BEARINGS SHOWN ARE NOT INTENDED TO BE DEFINITIVE IN ESTABLISHING ACTUAL TITLE BOUNDARIES. THIS DRAWING IS FOR CONSTRUCTION PURPOSES ONLY.

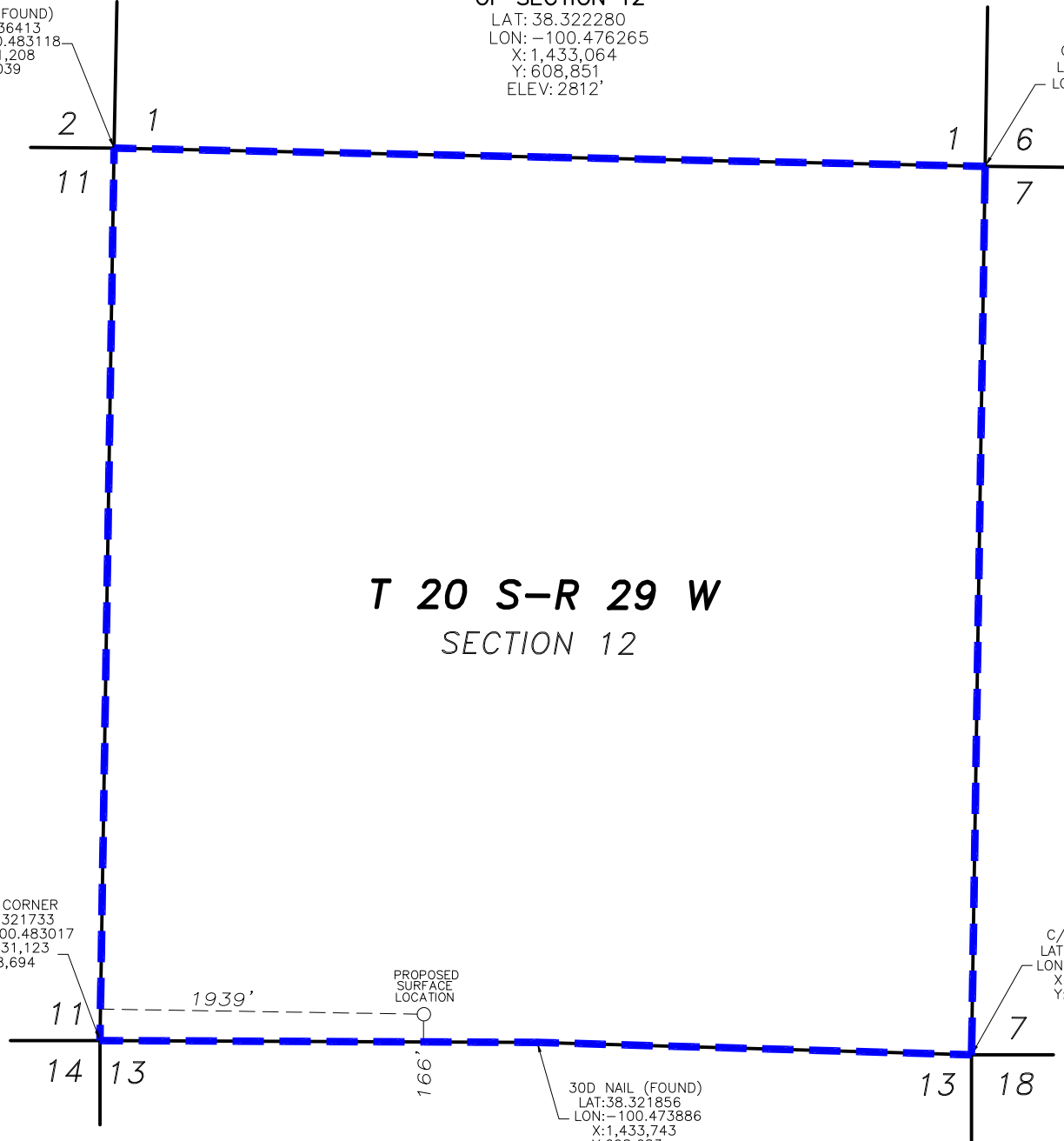
All Bearings, Distances, and Coordinates shown hereon are based on the Kansas State Plane Coordinate System, N.A.D. 27 Datum, South Zone.

**PROPOSED
SURFACE LOCATION
1939' FWL & 166' FSL
OF SECTION 12**

LAT: 38.322280
LON: -100.476265
X: 1,433,064
Y: 608,851
ELEV: 2812'

6" POST (FOUND)
LAT:38.336413
LON:-100.483118
X:1,431,208
Y:614,039

C/L INT. RD.
LAT:38.336416
LON:-100.464918
X:1,436,427
Y:613,929



**T 20 S-R 29 W
SECTION 12**

FENCE CORNER
LAT:38.321733
LON:-100.483017
X:1,431,123
Y:608,694

C/L INT. RD.
LAT:38.321803
LON:-100.464811
X:1,436,346
Y:608,609

30D NAIL (FOUND)
LAT:38.321856
LON:-100.473886
X:1,433,743
Y:608,683

REVIEW COPY

**PROPOSED WELL LOCATION
ENCANA OIL & GAS (USA) INC.
JASPER 12V-1 SWD
LANE COUNTY, KANSAS
SCALE: 1" = 1000'**

— — — — — = UNIT LINE