

T30S, R5W, 6th P.M.

Found Broken Stone, 0.7'  
Below Ground, Set 1/2" Rebar  
W/Plastic Cap In N-S Road  
NAD 27 Kansas South  
N: 273003.12  
E: 2174813.41

SGOMI

R  
6  
W

N89°26'11"E - 2648.21' (Meas.) N89°25'52"E - 2645.35' (Meas.)

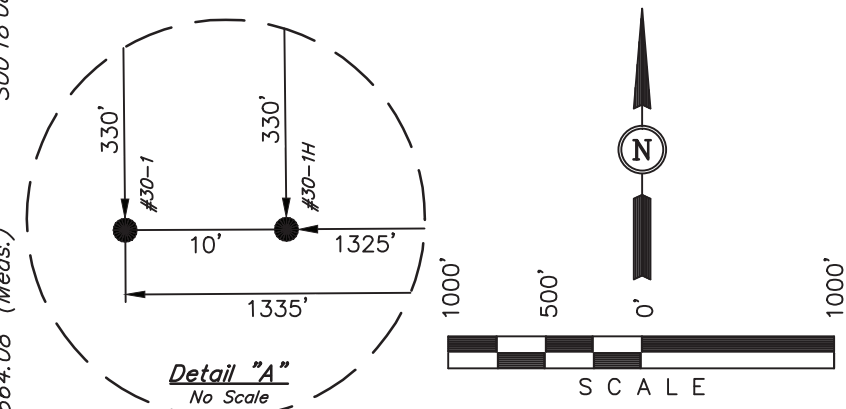
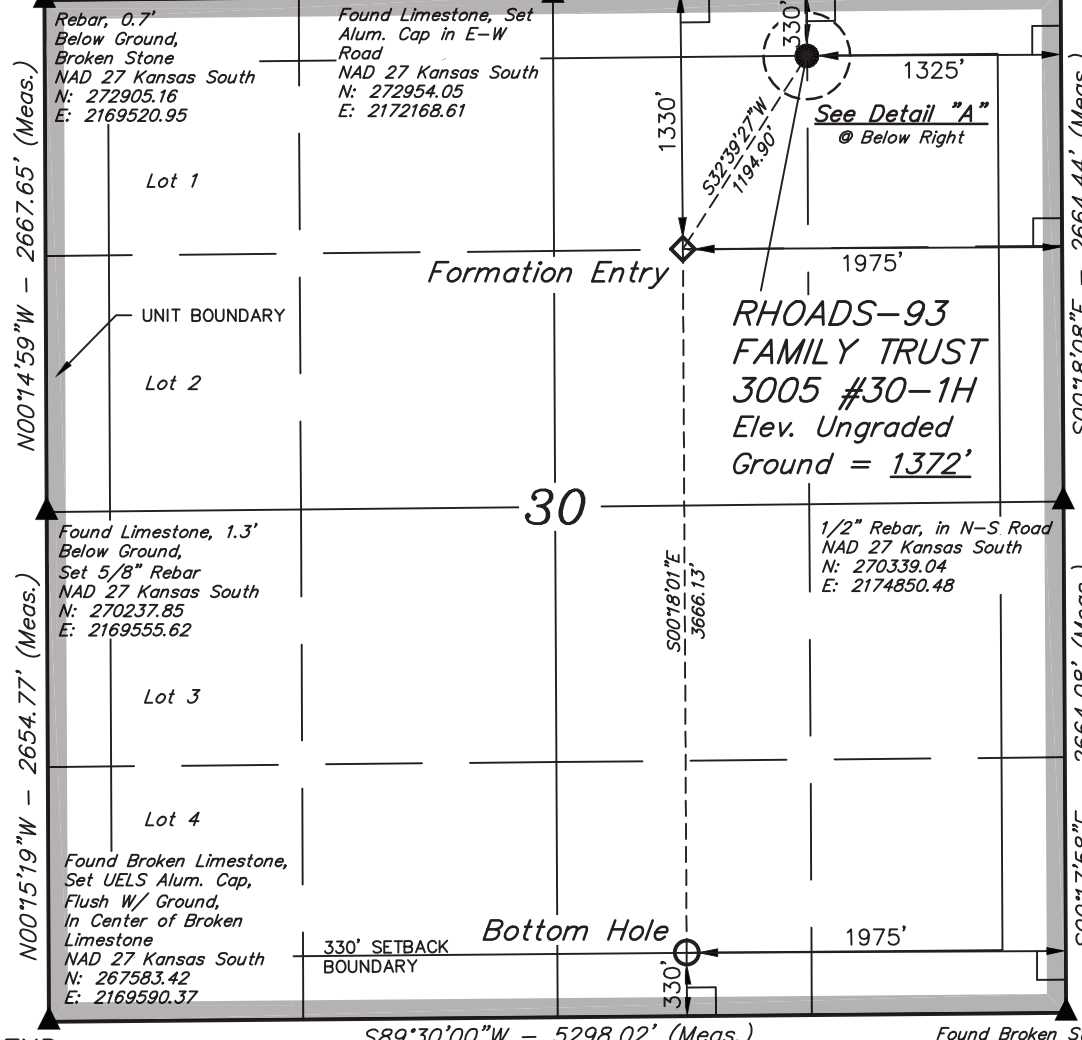
Well location, RHOADS-93 FAMILY TRUST 3005 #30-1H, located as shown in the NW 1/4 NE 1/4 of Section 30, T30S, R5W, 6th P.M., Kingman County, Kansas.

BASIS OF ELEVATION

SPOT ELEVATION LOCATED AT THE NORTHEAST CORNER OF SECTION 25, T31S, R4W, 6th P.M. TAKEN FROM THE MILAN, QUADRANGLE, KANSAS, SUMNER COUNTY, 7.5 MINUTE QUAD (TOPOGRAPHIC MAP) PUBLISHED BY THE UNITED STATES DEPARTMENT OF THE INTERIOR, GEOLOGICAL SURVEY. SAID ELEVATION IS MARKED AS BEING 1333 FEET.

BASIS OF BEARINGS

BASIS OF BEARINGS IS A G.P.S. OBSERVATION.



CERTIFICATE  
 THIS IS TO CERTIFY THAT THE ABOVE PLAT WAS PREPARED FROM FIELD NOTES OF ACTUAL SURVEYS MADE BY ME OR UNDER MY SUPERVISION AND THAT THE SAME ARE TRUE AND CORRECT TO THE BEST OF MY KNOWLEDGE AND BELIEF.  
 Justin L. Smith  
 REGISTERED LAND SURVEYOR  
 REGISTRATION NO. 1461  
 STATE OF KANSAS  
 10-12

LEGEND:  
 L = 90° SYMBOL  
 ● = PROPOSED WELL HEAD.  
 ▲ = SECTION CORNERS LOCATED.

Found Broken Stone, Set 1/2" Rebar With Plastic Cap In Center of Broken Stone, In Road Intersection  
 NAD 27 Kansas South  
 N: 267675.33  
 E: 2174887.42

UINTAH ENGINEERING & LAND SURVEYING  
 85 SOUTH 200 EAST - VERNAL, UTAH 84078  
 (435) 789-1017

NAD 83 (#30-1H TARGET BOTTOM HOLE) LATITUDE = 37°24'04.04" (37.401122) LONGITUDE = 97°54'18.38" (97.905106)	NAD 83 (#30-1H FORMATION ENTRY) LATITUDE = 37°24'40.28" (37.411189) LONGITUDE = 97°54'18.72" (97.905200)	NAD 83 (#30-1H SURFACE LOCATION) LATITUDE = 37°24'50.24" (37.413956) LONGITUDE = 97°54'10.75" (97.902986)	SCALE 1" = 1000'	DATE SURVEYED: 05-14-12	DATE DRAWN: 05-17-12
NAD 27 (#30-1H TARGET BOTTOM HOLE) LATITUDE = 37°24'03.97" (37.401103) LONGITUDE = 97°54'17.17" (97.904769)	NAD 27 (#30-1H FORMATION ENTRY) LATITUDE = 37°24'40.22" (37.411172) LONGITUDE = 97°54'17.51" (97.904864)	NAD 27 (#30-1H SURFACE LOCATION) LATITUDE = 37°24'50.18" (37.413939) LONGITUDE = 97°54'09.55" (97.902653)	PARTY J.P. B.L. C.C.	REFERENCES G.L.O. PLAT	
STATE PLANE NAD 27 (KANSAS SOUTH) N: 267971.02 E: 2172908.19	STATE PLANE NAD 27 (KANSAS SOUTH) N: 271636.65 E: 2172857.30	STATE PLANE NAD 27 (KANSAS SOUTH) N: 272648.13 E: 2173493.35	WEATHER WARM	FILE SGOMI	