

**SUPERIOR
Hays,
Kansas**

**DUAL
INDUCTION
LOG**

Company GORE OIL COMPANY
Well PLANTE "C" #1
Field PLAINVILLE
County ROOKS State KANSAS

Location: API #: 15-163-24022
1650' FNL & 1650' FWL
SEC 17 TWP 10S RGE 17W
Permanent Datum GROUND LEVEL Elevation 2137
Log Measured From KELLY BUSHING 8' A.G.L.
Drilling Measured From KELLY BUSHING
Other Services
CDL/CNL
MICRO
Elevation
K.B. 2145
D.F.
G.L. 2137

Date	6-4-12
Run Number	ONE
Depth Driller	3694
Depth Logger	3695
Bottom Logged Interval	3693
Top Log Interval	00
Casing Driller	263
Casing Logger	263
Bit Size	7.875
Type Fluid in Hole	CHEMICAL MUD
Density / Viscosity	9.3 / 55
pH / Fluid Loss	10.0 / 7.8
Source of Sample	FLOWLINE
Rim @ Meas. Temp	0.70 @ 87F
Rmf @ Meas. Temp	0.53 @ 87F
Rmc @ Meas. Temp	0.84 @ 87F
Source of Rmf / Rmc	MEASURED
Rim @ BHT	.540 @ 112F
Time Circulation Stopped	3 HOURS
Time Logger on Bottom	6:45 A.M.
Maximum Recorded Temperature	112F
Equipment Number	860
Location	HAYS, KS.
Recorded By	RUPP
Witnessed By	MARC DOWNING

<<< Fold Here >>>

All interpretations are opinions based on inferences from electrical or other measurements and we cannot and do not guarantee the accuracy or correctness of any interpretation, and we shall not, except in the case of gross or willful negligence on our part, be liable or responsible for any loss, costs, damages, or expenses incurred or sustained by anyone resulting from any interpretation made by any of our officers, agents or employees. These interpretations are also subject to our general terms and conditions set out in our current Price Schedule.

Comments

SUPERIOR WELL SERVICES
785-628-6395
THANK YOU FOR YOUR BUSINESS
DIRECTIONS: PLAINVILLE, S TO "AA" RD., (AIRPORT RD.), 3 1/4E, S INTO.



**SUPERIOR
Hays,
Kansas**

MAIN SECTION

Database File: 008783ddn.db
 Dataset Pathname: pass3.1A
 Presentation Format: dil2
 Dataset Creation: Mon Jun 04 07:55:43 2012
 Charted by: Depth in Feet scaled 1:600

0 Gamma Ray (GAPI) 150

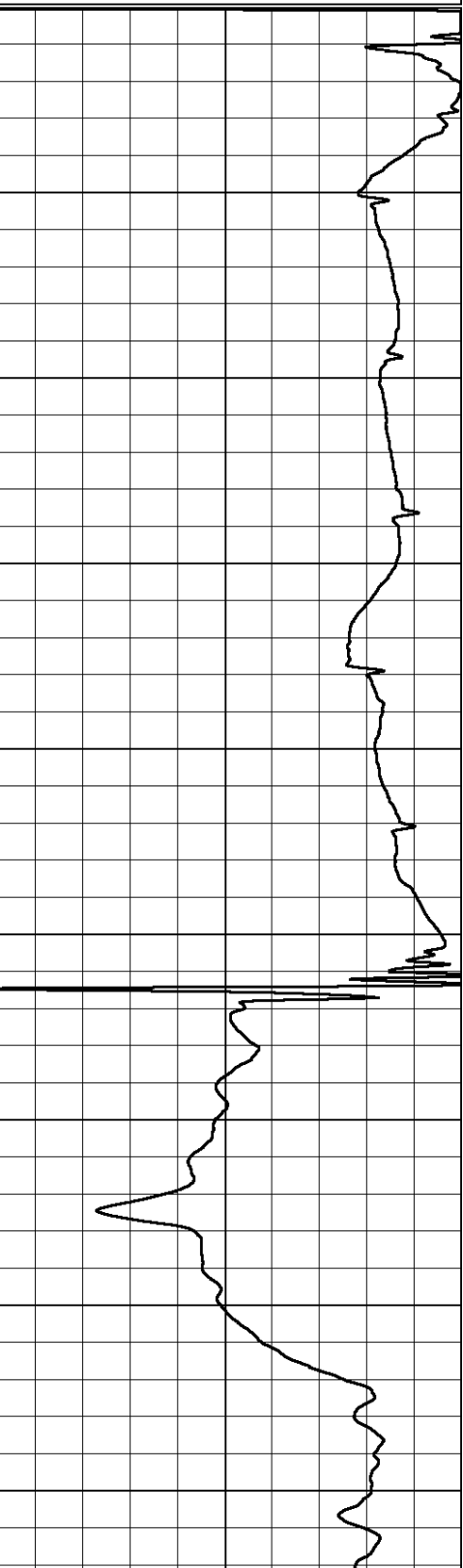
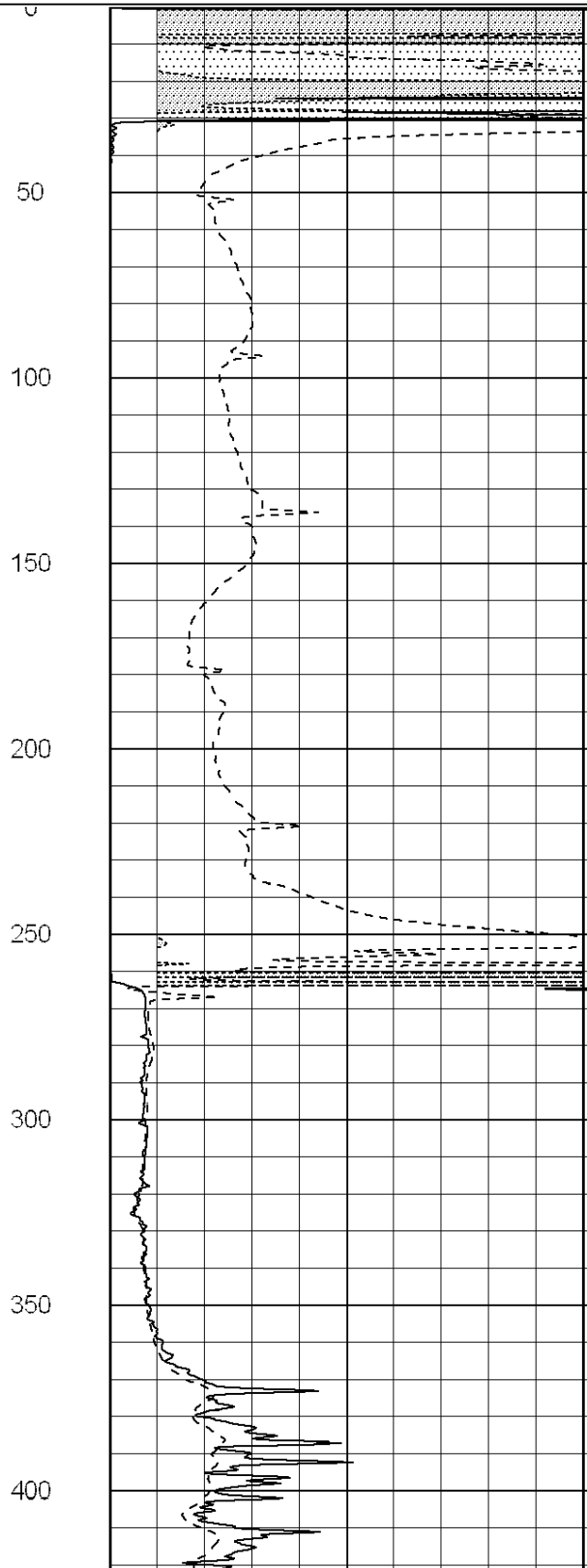
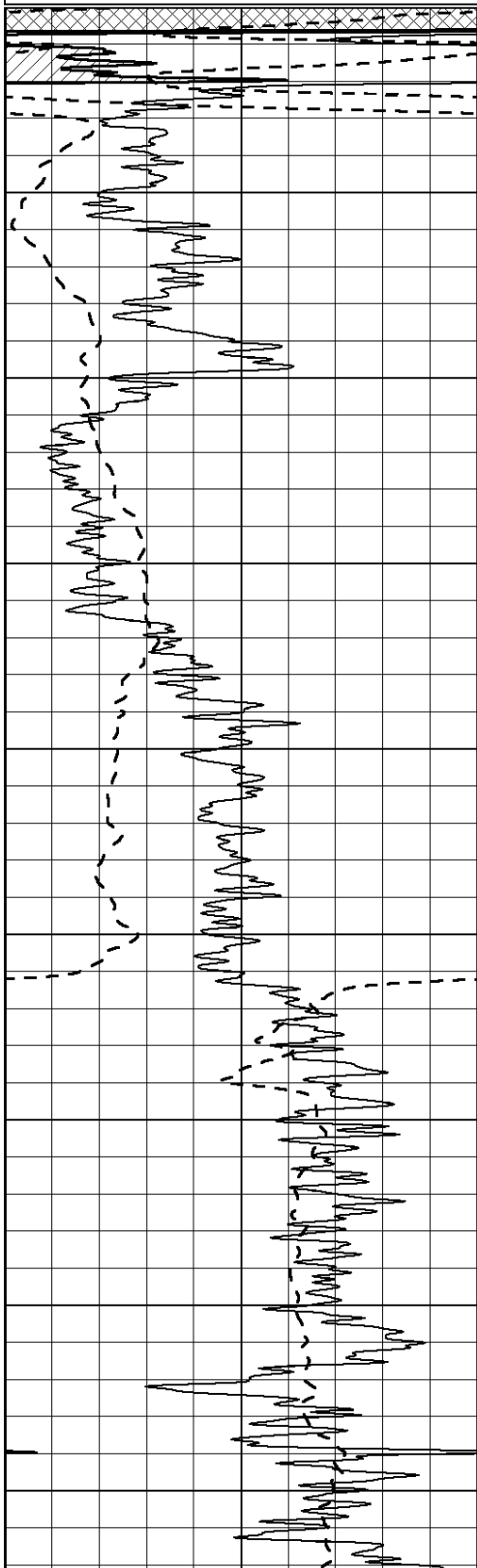
0 RLL3 (Ohm-m) 50

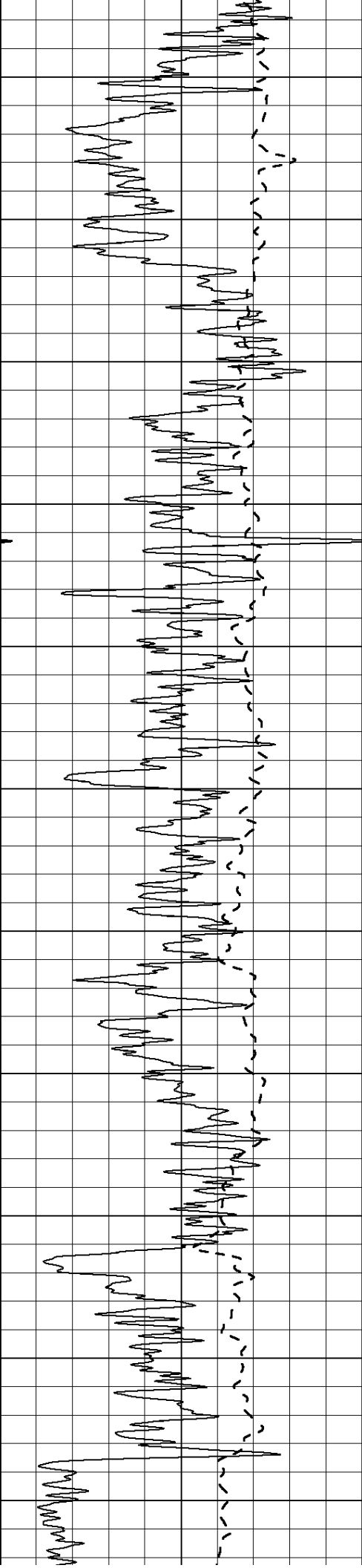
0 Deep Induction (Ohm-m) 50

1000 CILD (mmho/m) 0

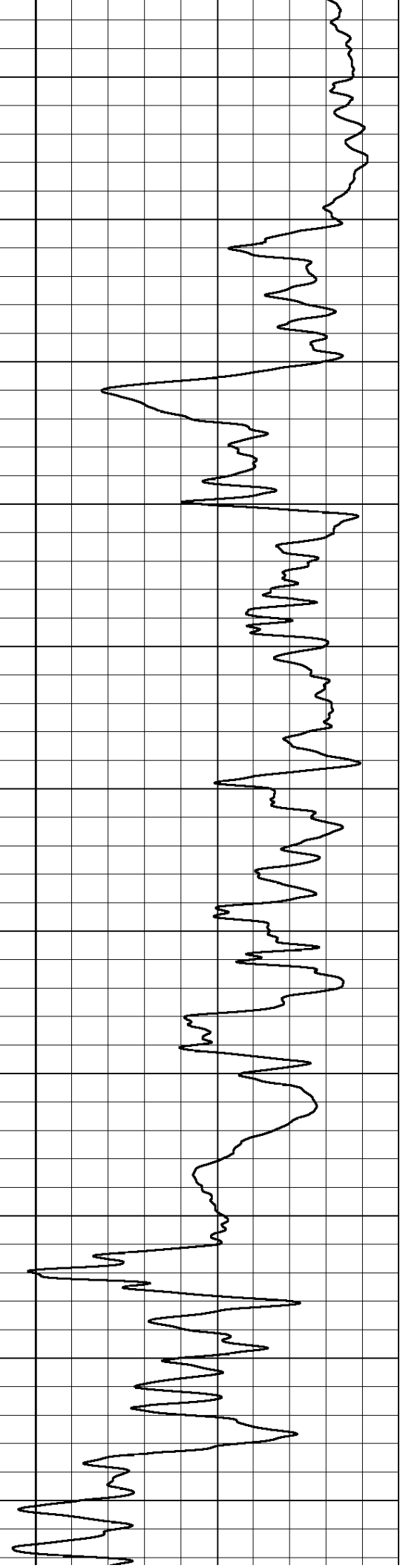
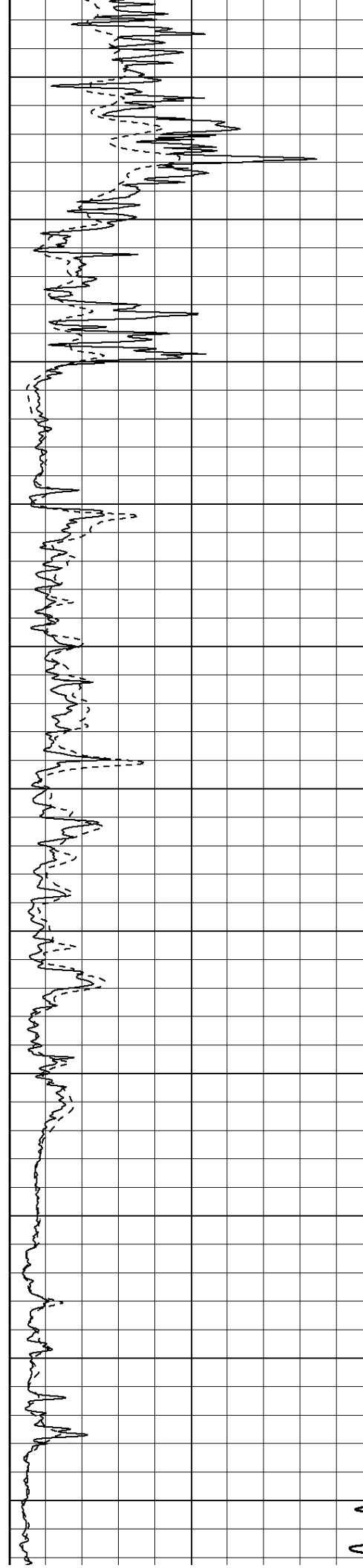
50 RILD X10 (Ohm-m) 500

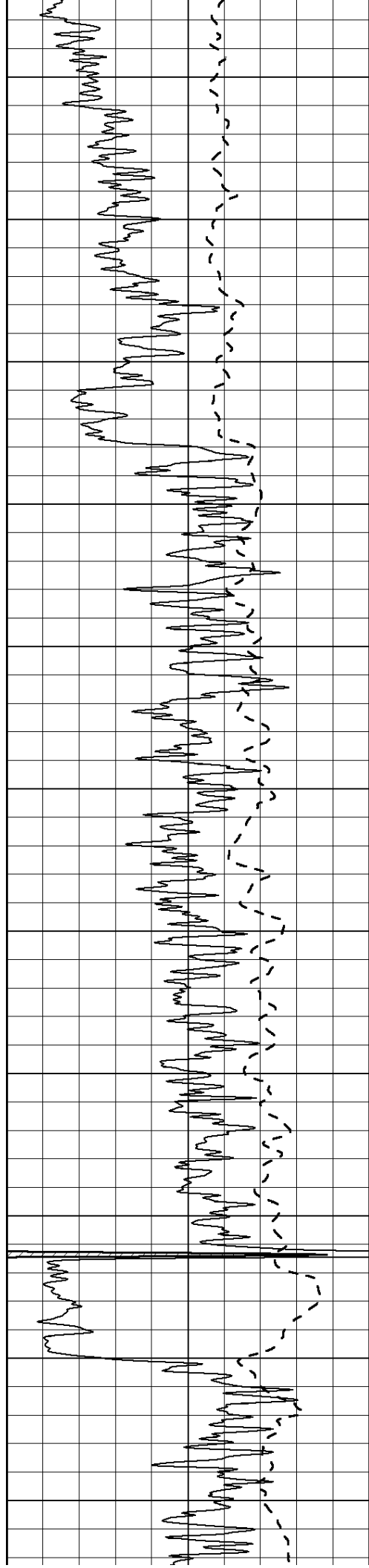
50 RLL3 X10 (Ohm-m) 500



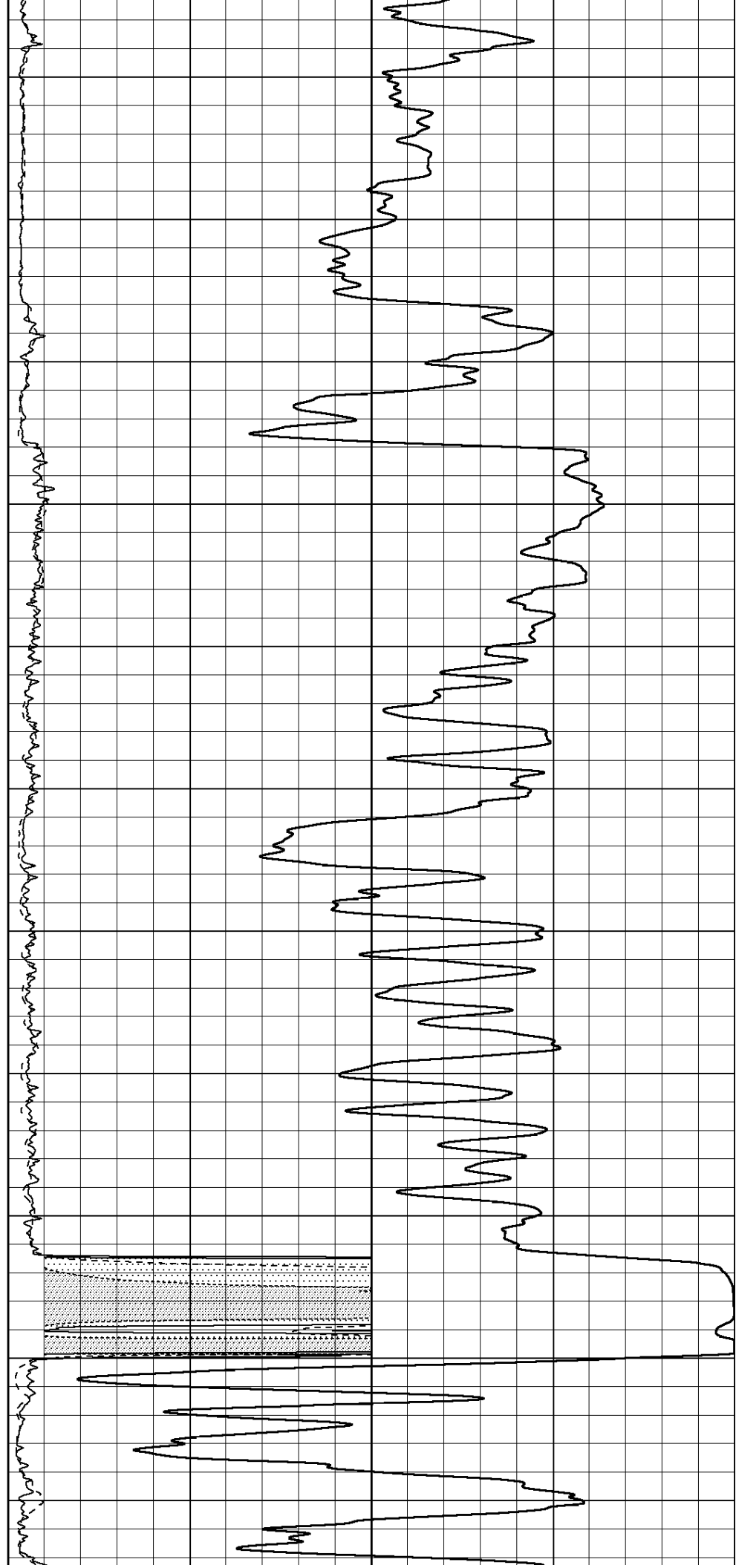


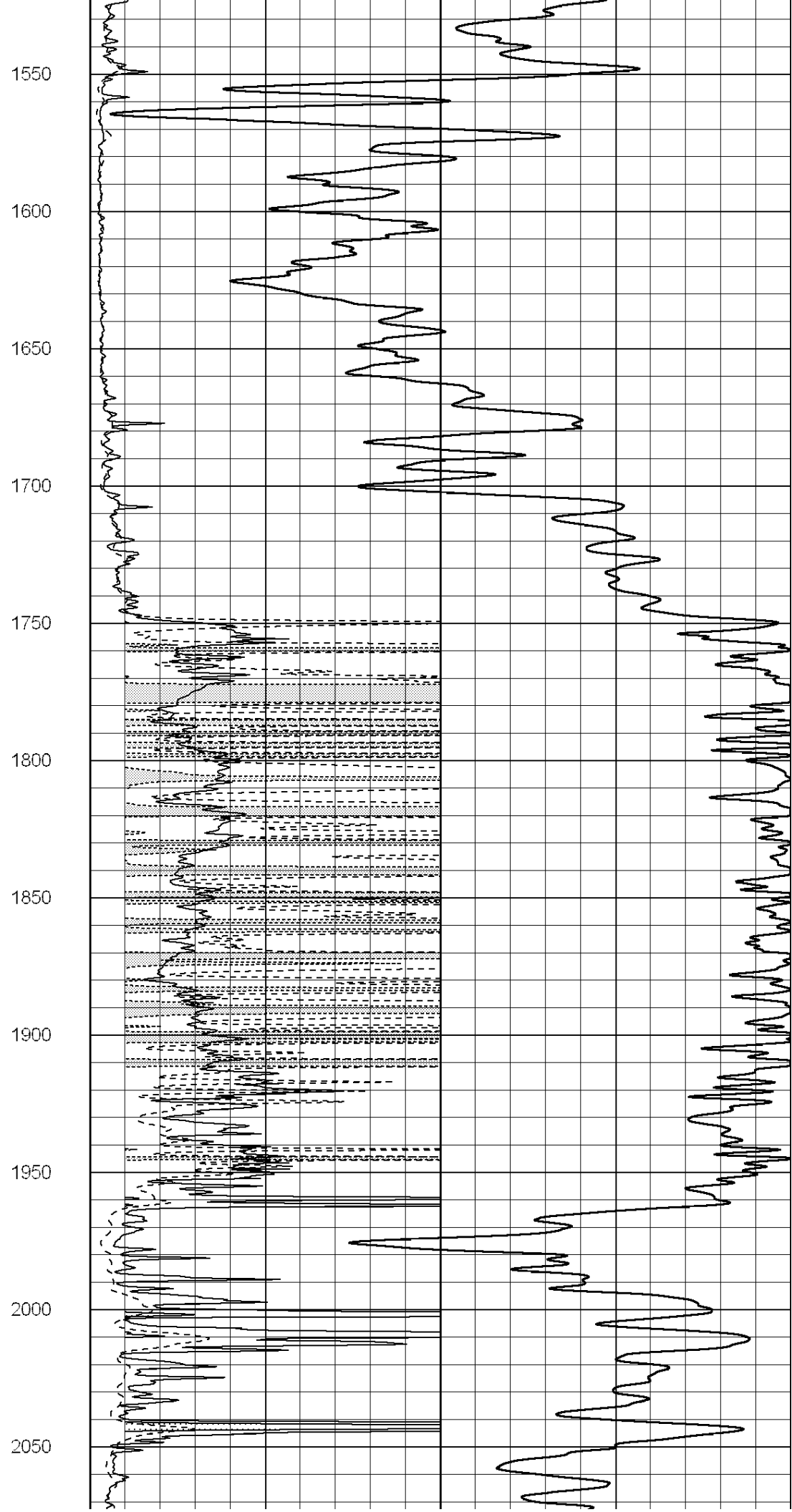
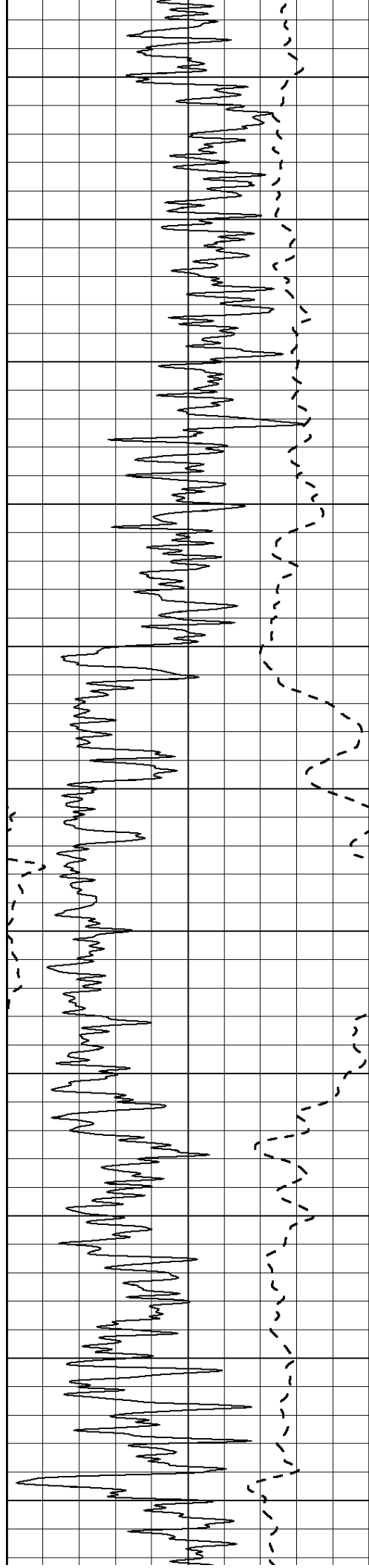
450
500
550
600
650
700
750
800
850
900
950

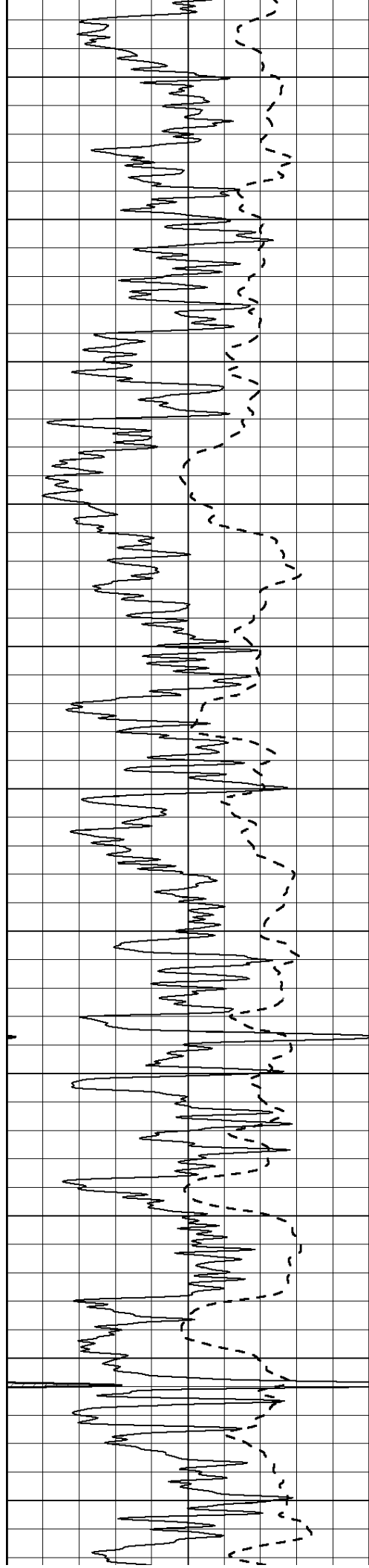




1000
1050
1100
1150
1200
1250
1300
1350
1400
1450
1500







2100

2150

2200

2250

2300

2350

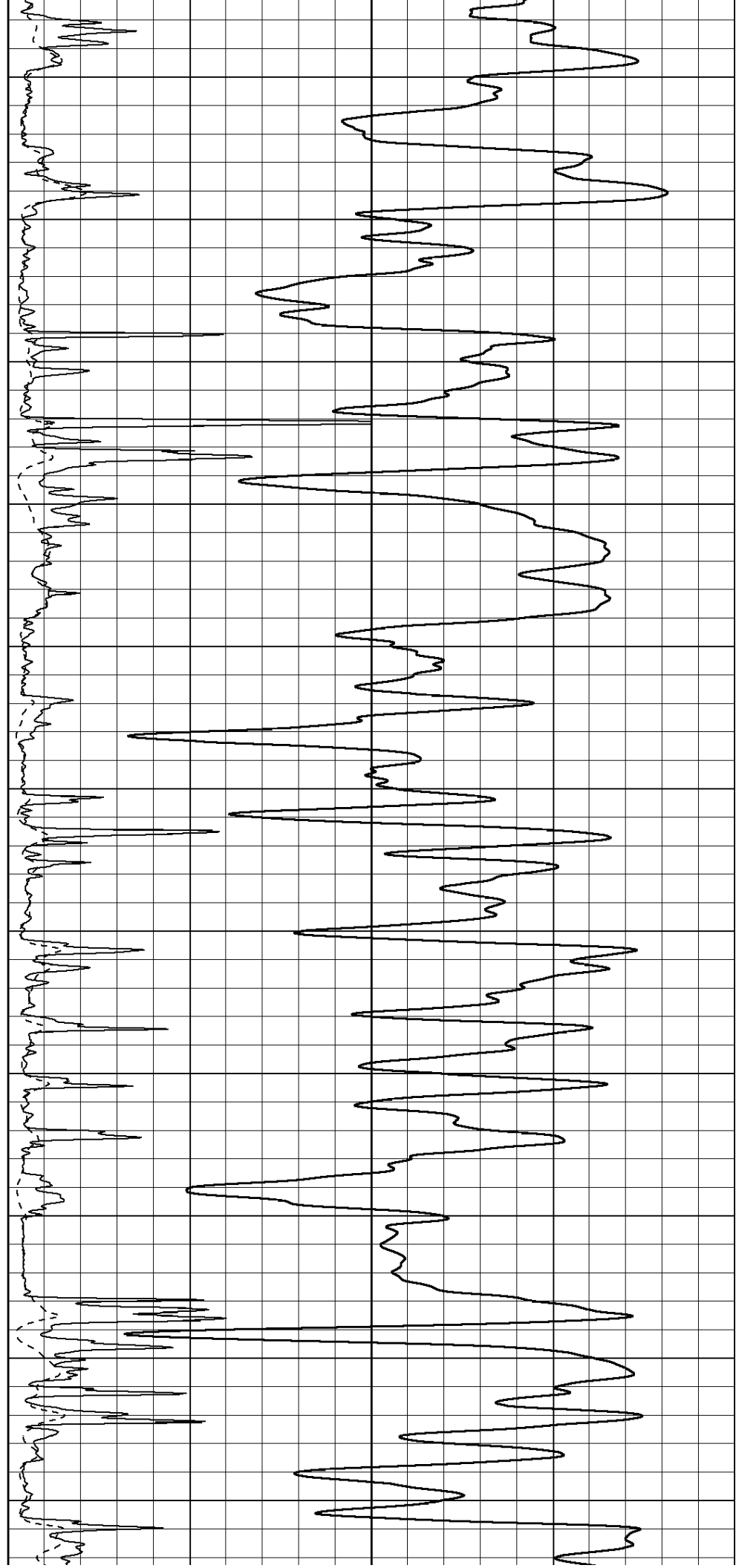
2400

2450

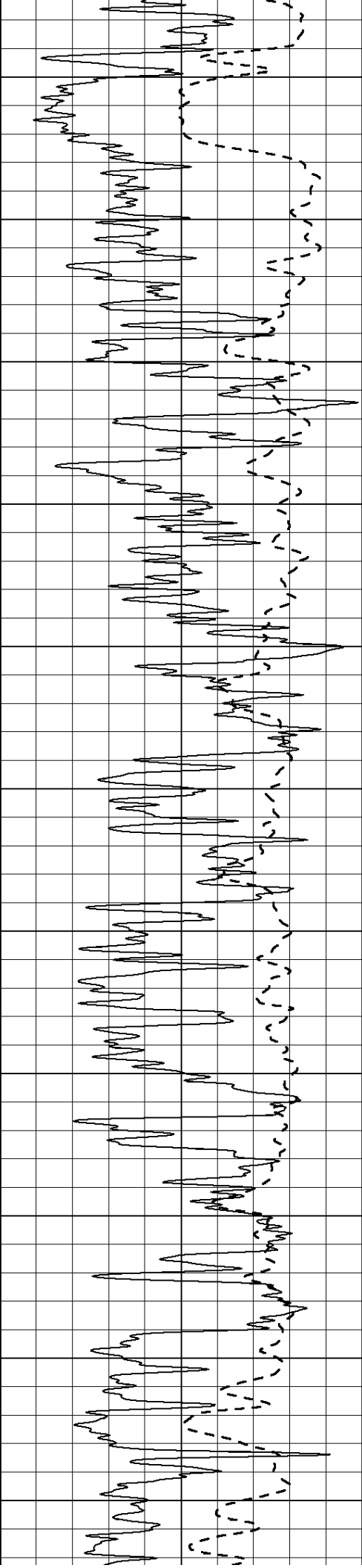
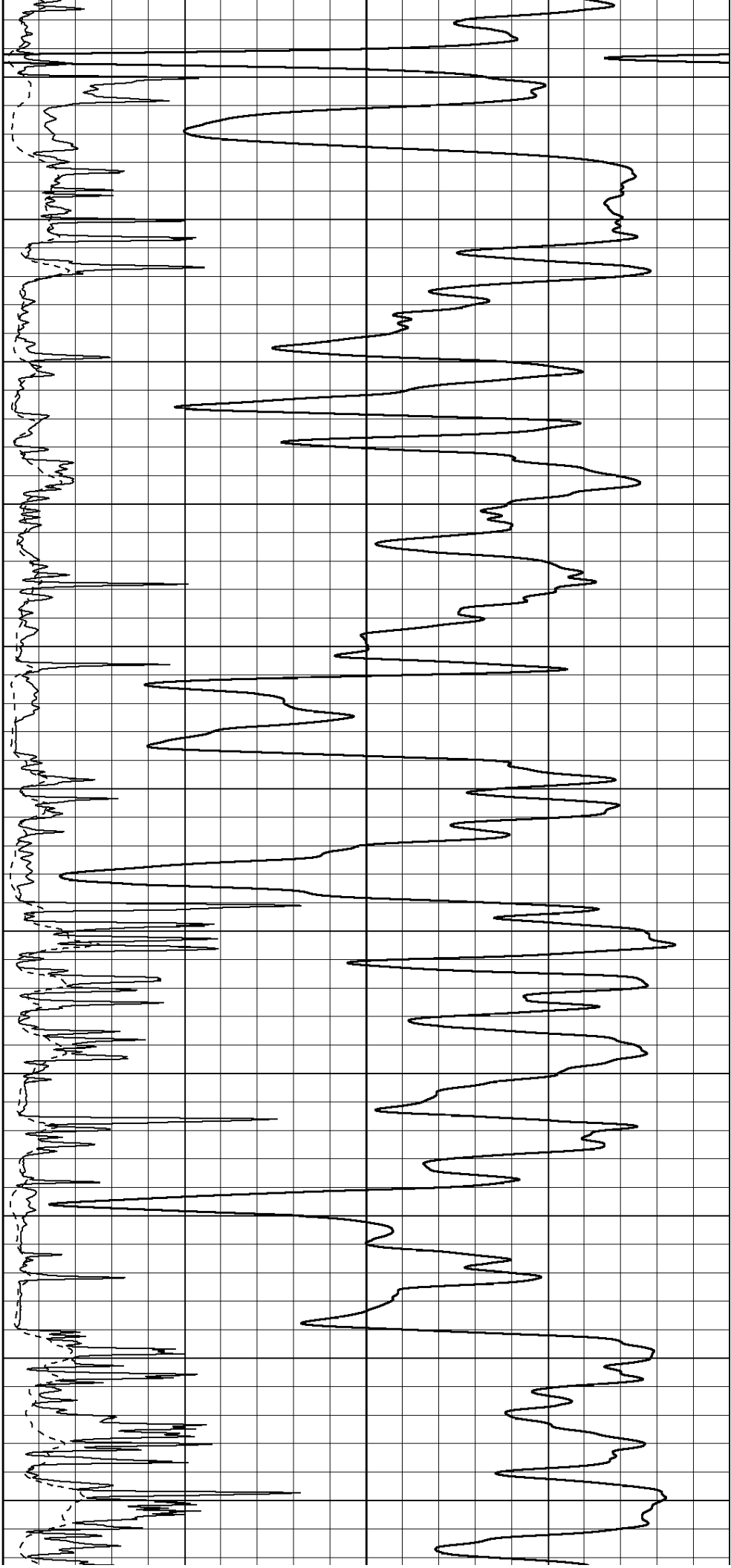
2500

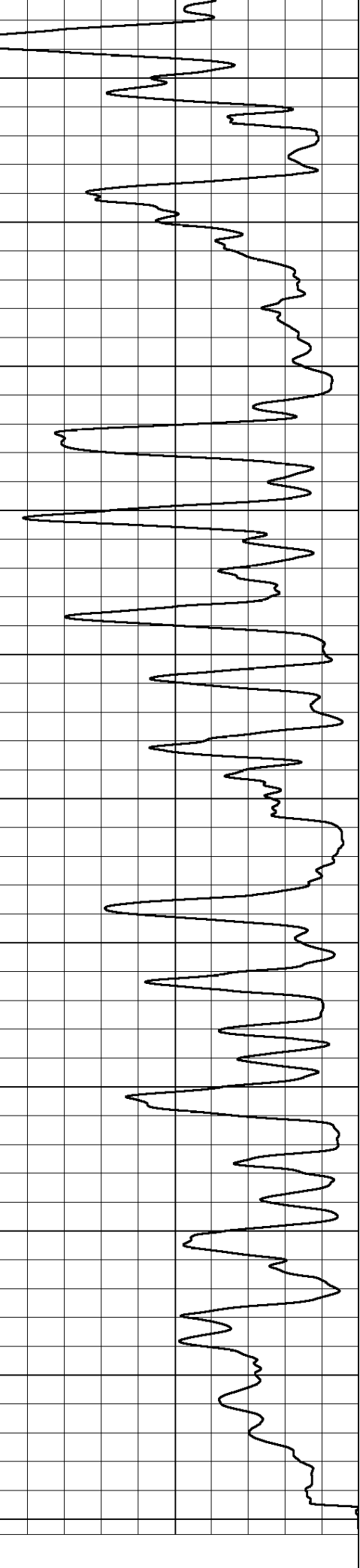
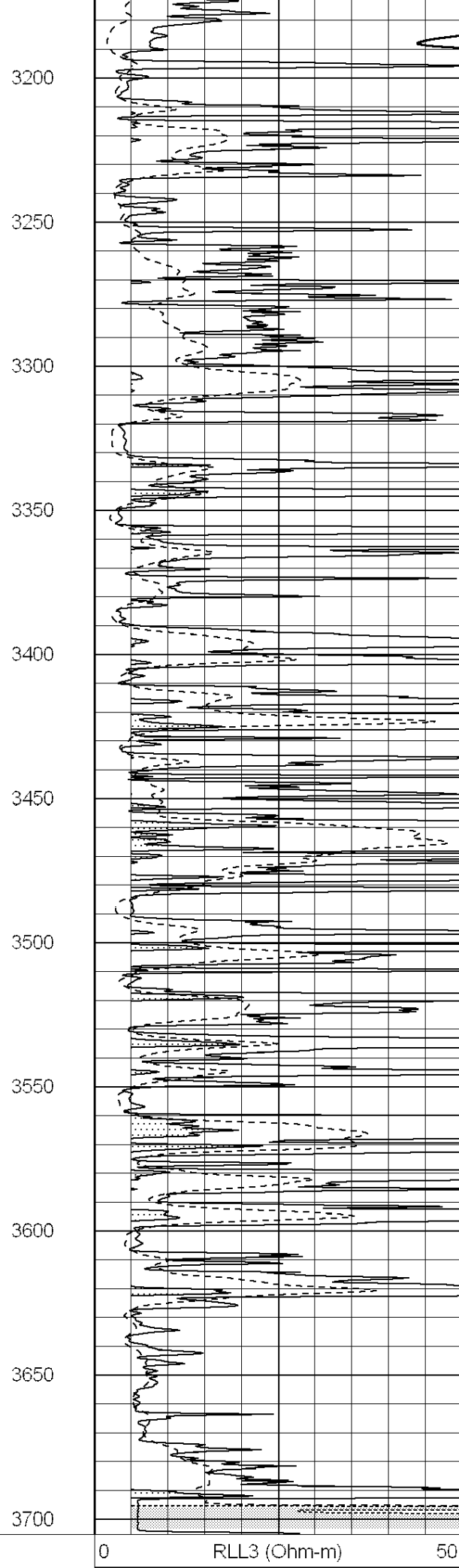
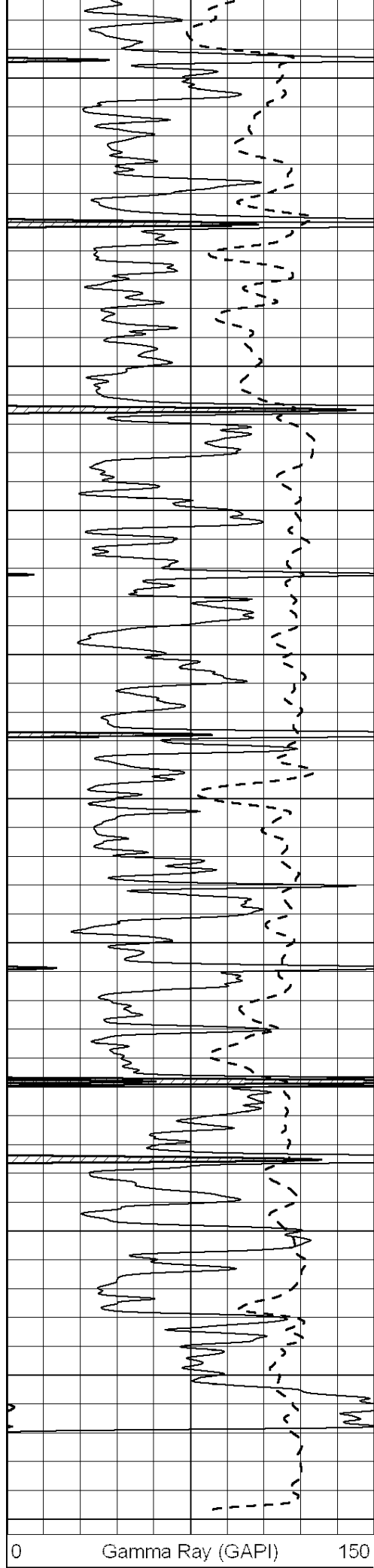
2550

2600



2650
2700
2750
2800
2850
2900
2950
3000
3050
3100
3150





0	Deep Induction (Ohm-m)	50
1000	CILD (mmho/m)	0
50	RILD X10 (Ohm-m)	500
50	RLL3 X10 (Ohm-m)	500



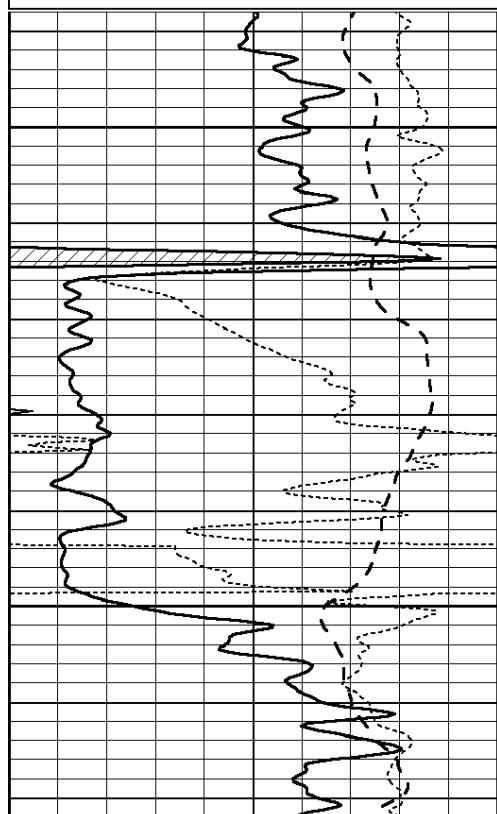
SUPERIOR
Hays,
Kansas

MAIN SECTION

Database File: 008783ddn.db
 Dataset Pathname: pass3.1A
 Presentation Format: dil
 Dataset Creation: Mon Jun 04 07:55:43 2012
 Charted by: Depth in Feet scaled 1:240

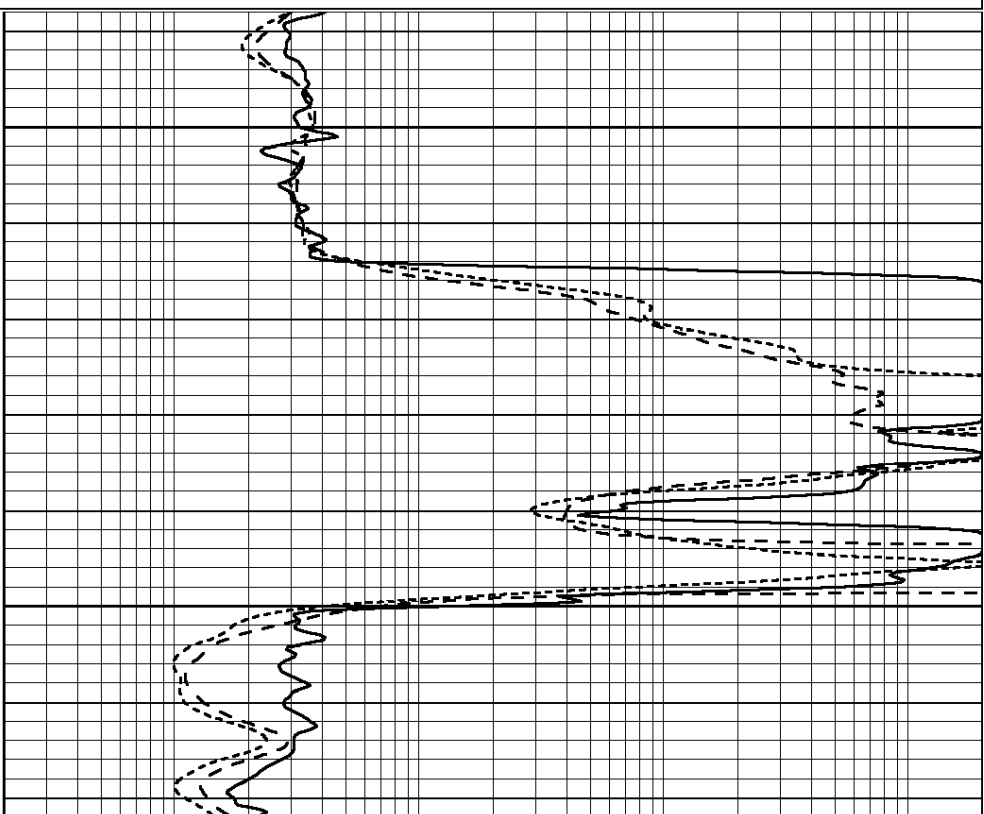
0	GAMMA RAY (GAPI)	150
-100	SP (mV)	100
-250	RxoRt	50
0	MINMK	20

0.2	RLL3 (Ohm-m)	2000
0.2	DEEP INDUCTION (Ohm-m)	2000
0.2	MEDIUM INDUCTION (Ohm-m)	2000



1400

1450



0	GAMMA RAY (GAPI)	150
-100	SP (mV)	100
-250	RxoRt	50
0	MINMK	20

0.2	RLL3 (Ohm-m)	2000
0.2	DEEP INDUCTION (Ohm-m)	2000
0.2	MEDIUM INDUCTION (Ohm-m)	2000



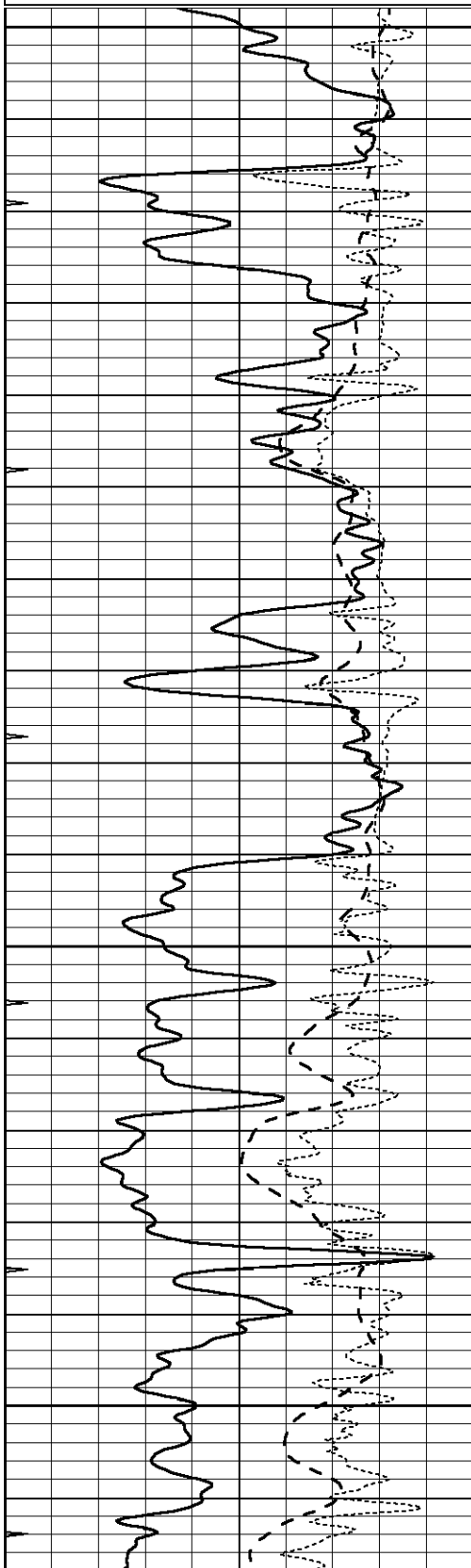
SUPERIOR
Hays,
Kansas

MAIN SECTION

Database File: 008783ddn.db
 Dataset Pathname: pass3.1A
 Presentation Format: dil
 Dataset Creation: Mon Jun 04 07:55:43 2012
 Charted by: Depth in Feet scaled 1:240

0	GAMMA RAY (GAPI)	150
-100	SP (mV)	100
-250	RxoRt	50
0	MINMK	20

0.2	RLL3 (Ohm-m)	2000
0.2	DEEP INDUCTION (Ohm-m)	2000
0.2	MEDIUM INDUCTION (Ohm-m)	2000

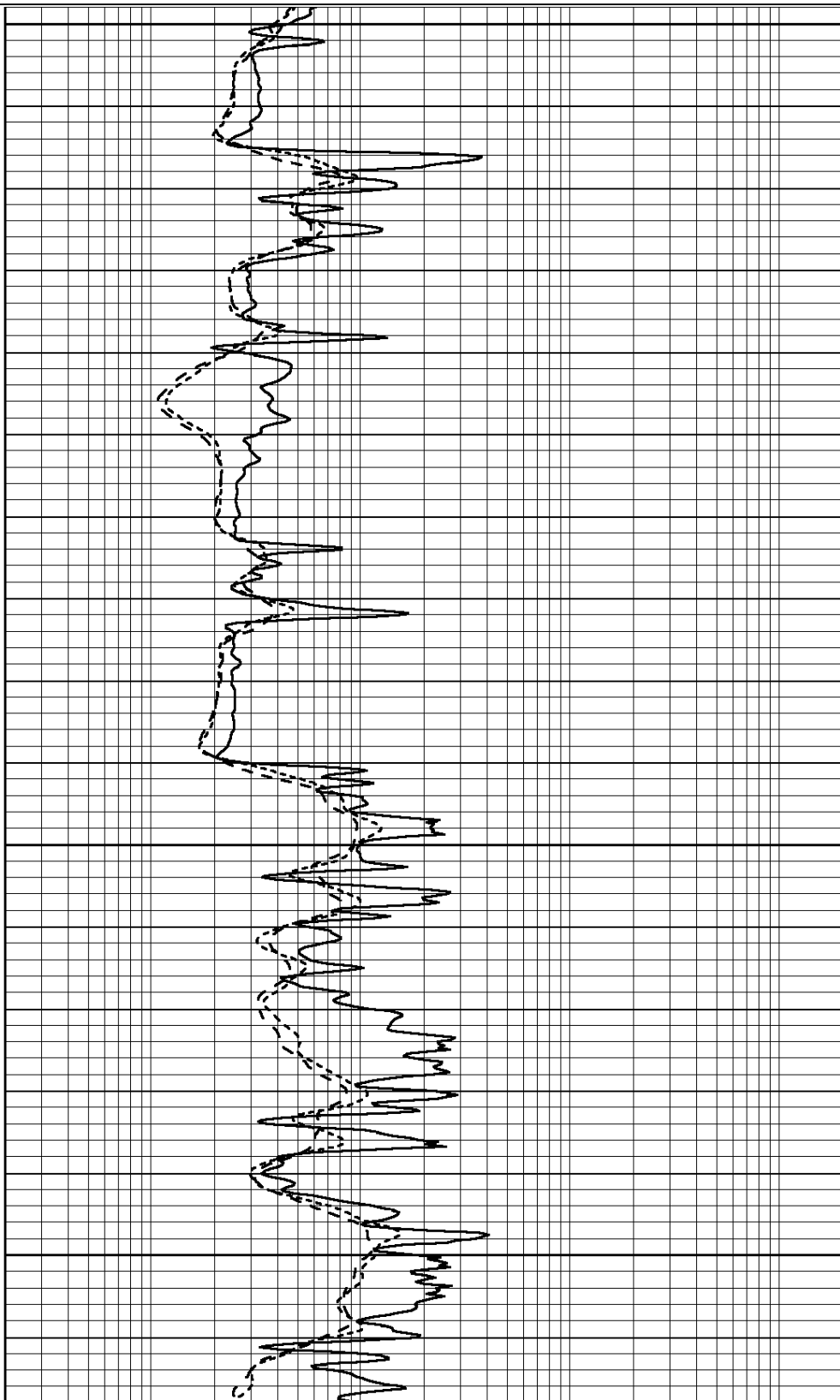


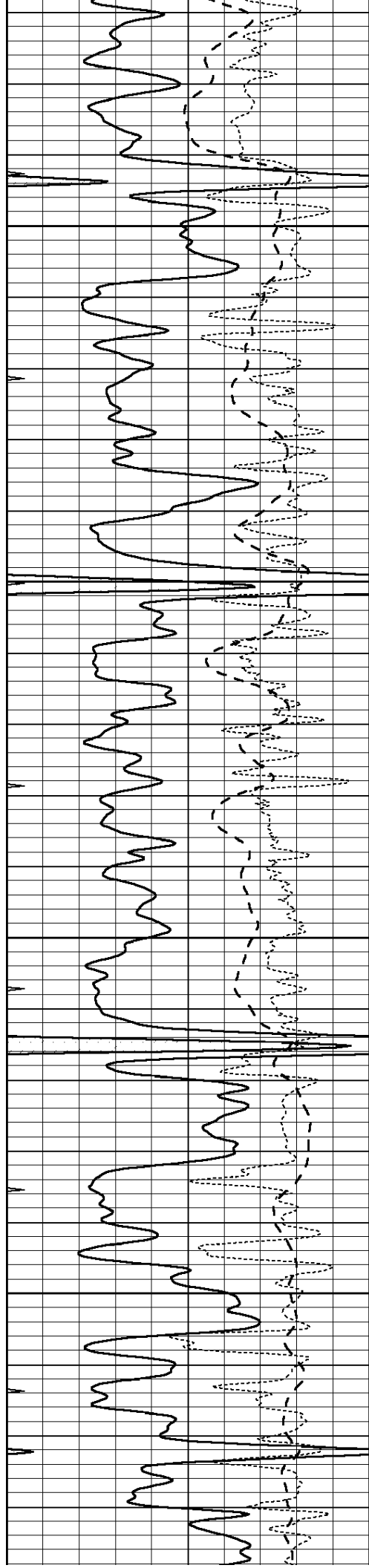
3000

3050

3100

3150



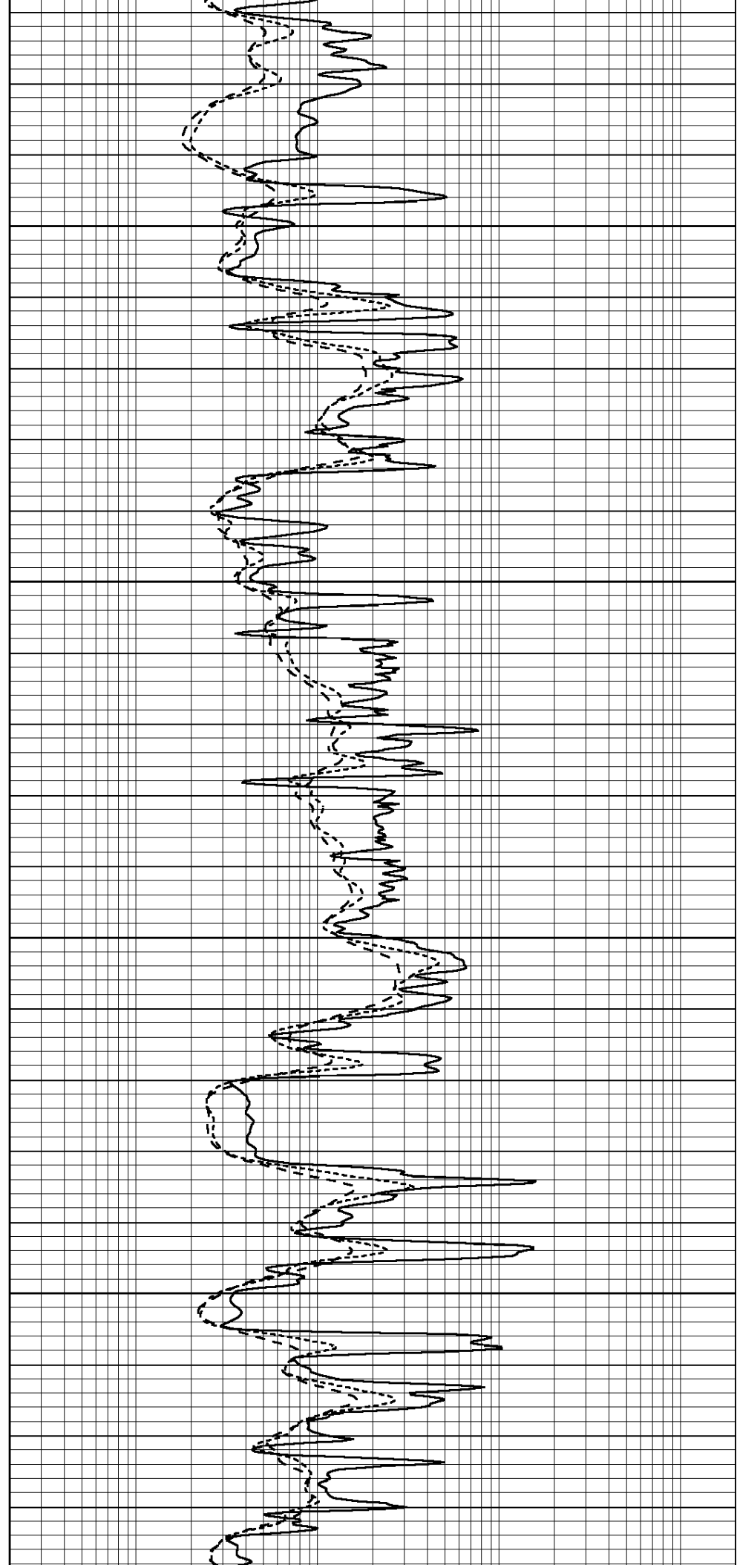


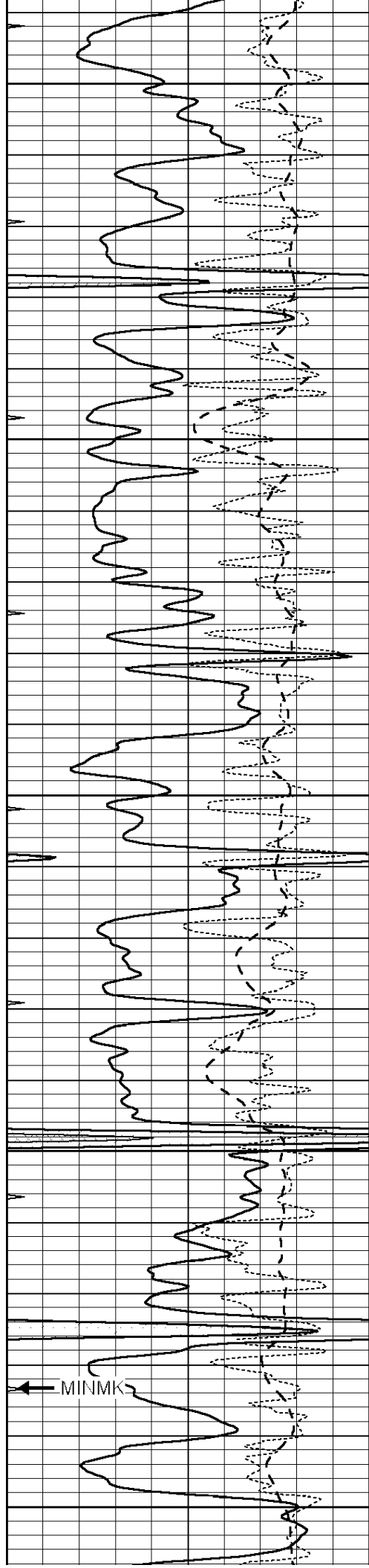
3200

3250

3300

3350





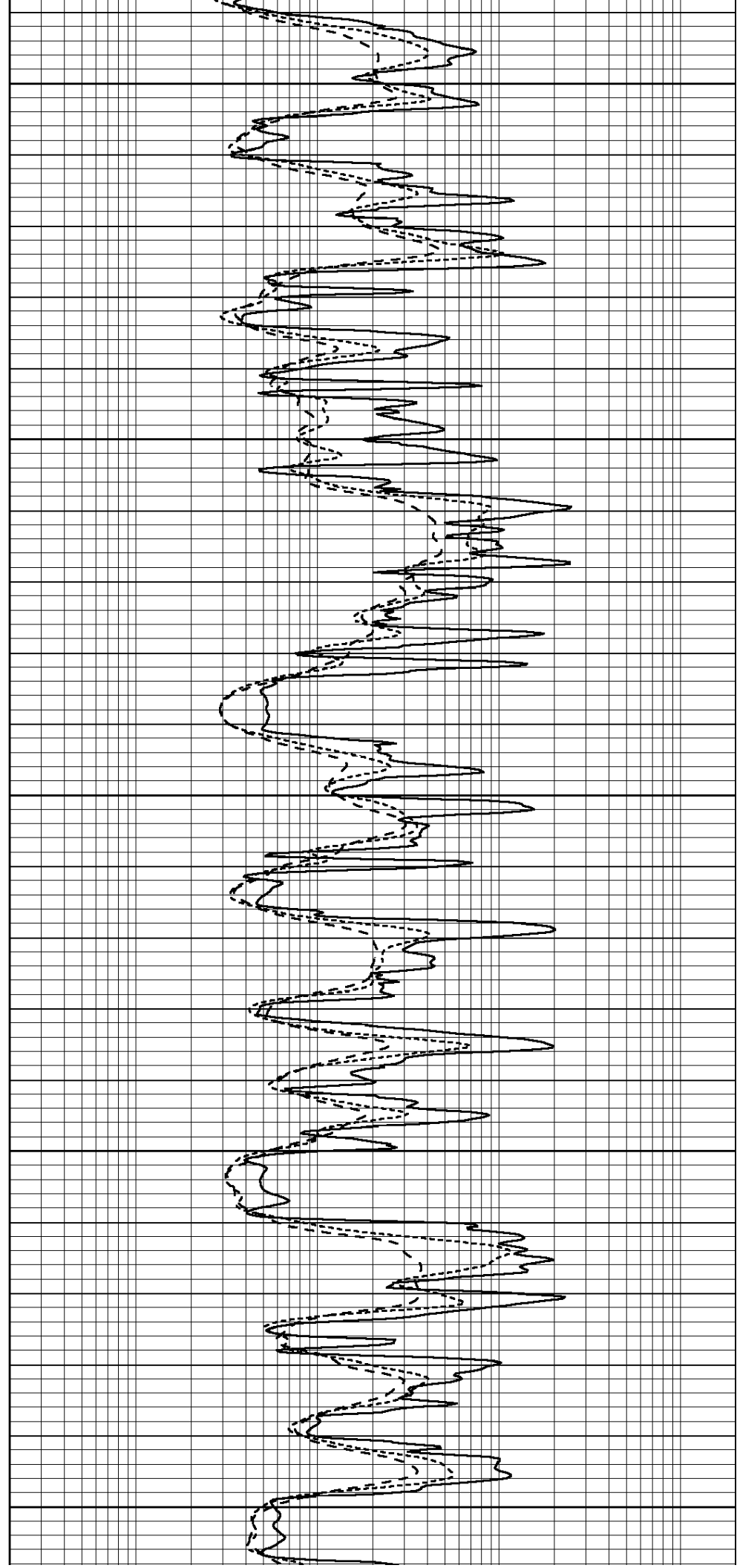
3400

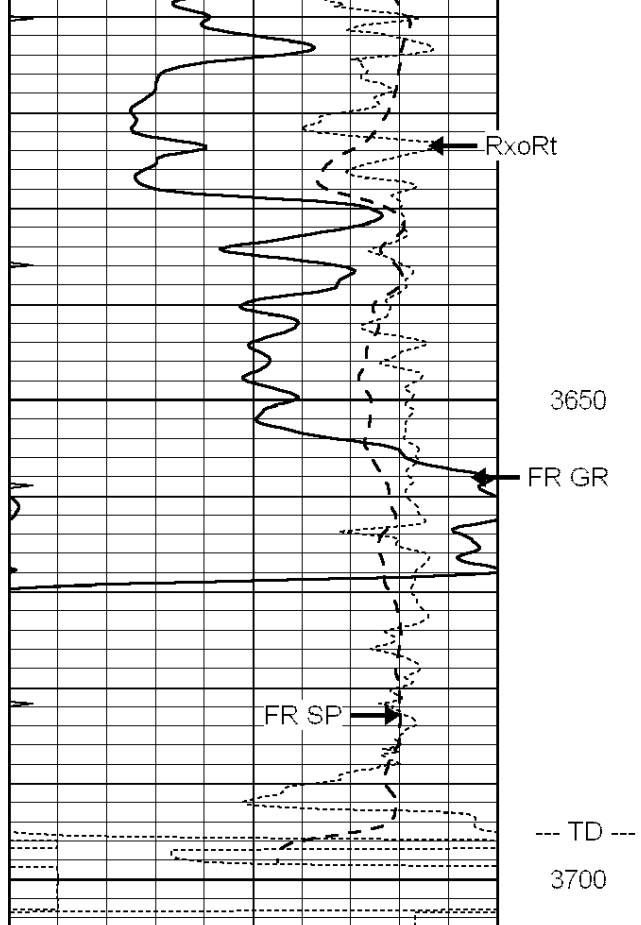
3450

3500

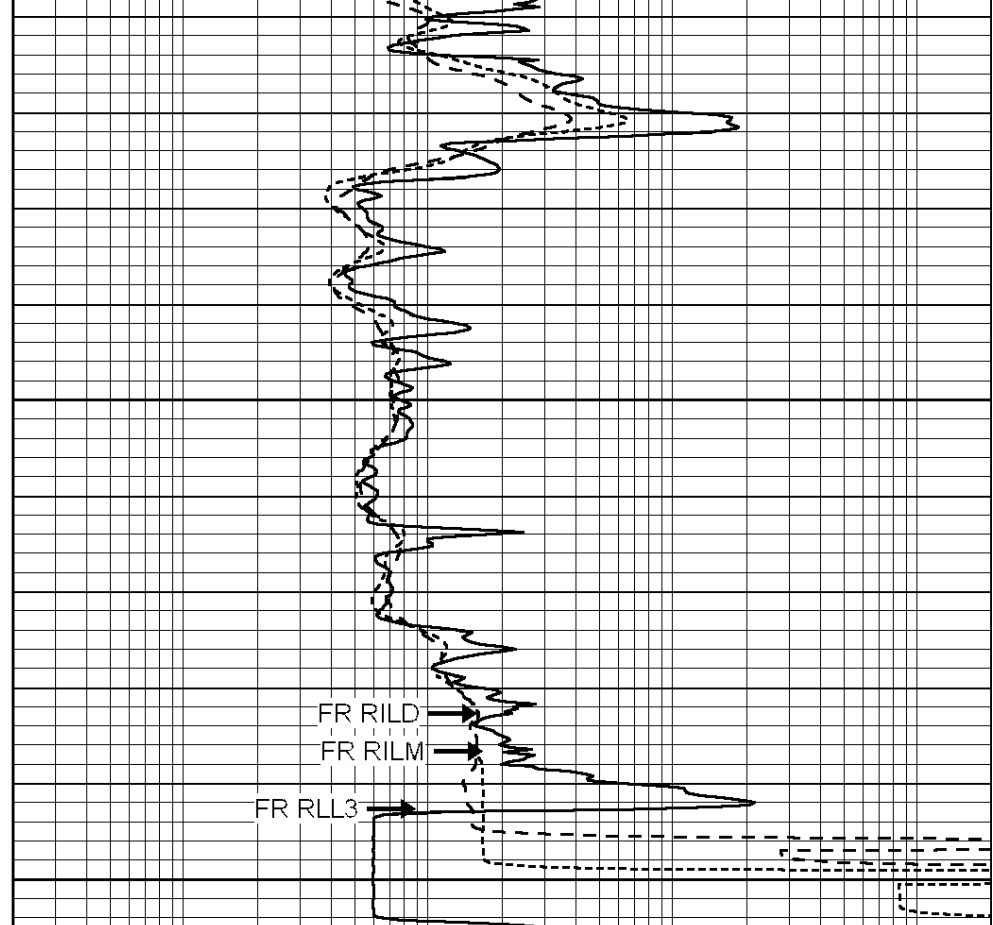
3550

3600





0	GAMMA RAY (GAPI)	150
-100	SP (mV)	100
-250	RxoRt	50
0	MINMK	20



0.2	RLL3 (Ohm-m)	2000
0.2	DEEP INDUCTION (Ohm-m)	2000
0.2	MEDIUM INDUCTION (Ohm-m)	2000



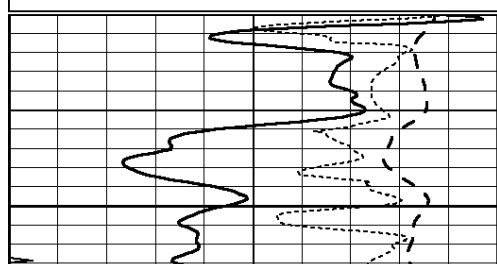
SUPERIOR
Hays,
Kansas

REPEAT SECTION

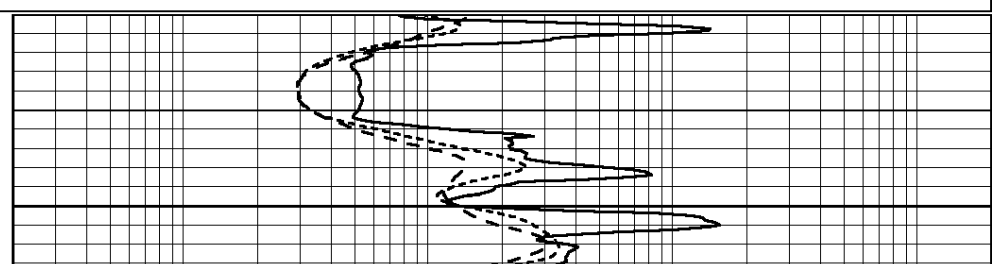
Database File: 008783ddn.db
 Dataset Pathname: pass2.1A
 Presentation Format: dil
 Dataset Creation: Mon Jun 04 07:11:46 2012
 Charted by: Depth in Feet scaled 1:240

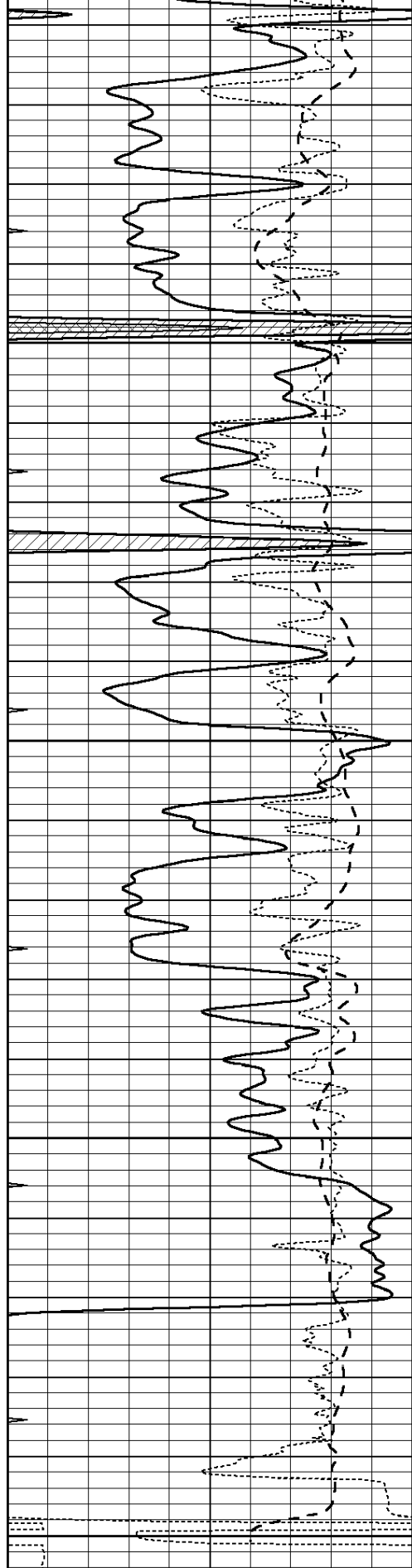
0	GAMMA RAY (GAPI)	150
-100	SP (mV)	100
-250	RxoRt	50
0	MINMK	20

0.2	RLL3 (Ohm-m)	2000
0.2	DEEP INDUCTION (Ohm-m)	2000
0.2	MEDIUM INDUCTION (Ohm-m)	2000



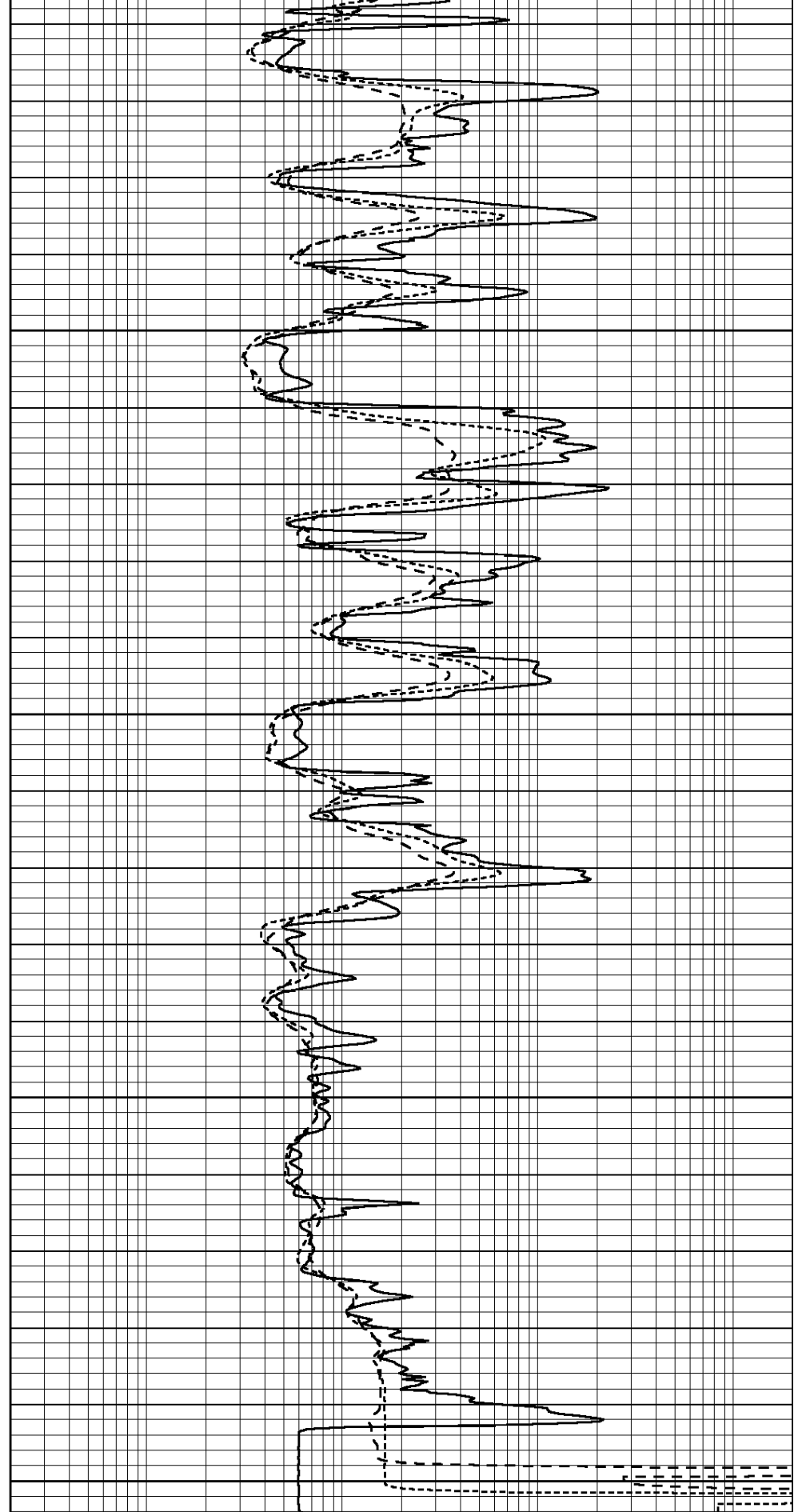
3500





0	GAMMA RAY (GAPI)	150
-100	SP (mV)	100
-250	RxoRt	50
0	MINMK	20

3550
3600
3650
3700



0.2	RLL3 (Ohm-m)	2000
0.2	DEEP INDUCTION (Ohm-m)	2000
0.2	MEDIUM INDUCTION (Ohm-m)	2000

Calibration Report

Database File: 008783ddn.db
 Dataset Pathname: pass3.1A
 Dataset Creation: Mon Jun 04 07:55:43 2012

Dual Induction Calibration Report

Serial-Model: PROBE9-DILG
 Surface Cal Performed: Mon Jun 04 06:50:26 2012
 Downhole Cal Performed: Mon Jul 28 12:02:56 2008
 After Survey Verification Performed: Fri Jun 01 07:32:39 2012

Surface Calibration

Loop:	Readings			References			Results	
	Air	Loop		Air	Loop		m	b
Deep	-0.014	0.629	V	0.000	400.000	mmho/m	550.000	-13.000
Medium	0.039	0.728	V	0.000	464.000	mmho/m	540.000	-17.000
Internal:	Zero	Cal		Zero	Cal		m	b
Deep	0.011	0.610	V	0.000	400.000	mmho/m	667.135	-7.256
Medium	0.005	0.712	V	0.000	464.000	mmho/m	655.677	-3.102

Downhole Calibration

	Readings			References			Results	
	Zero	Cal		Zero	Cal		m'	b'
Deep	0.000	0.000	mmho/m	14.508	388.384	mmho/m	1.000	0.000
Medium	0.000	0.000	mmho/m	166.367	504.400	mmho/m	1.000	0.000
LL3		7.500	V		1400.000	Ohm-m		
		0.000	V		20.000	Ohm-m		
		-7.200	V		3970.000	mmho-m		

After Survey Verification

	Readings			Targets			Results	
	Zero	Cal		Zero	Cal		m'	b'
Deep	0.000	0.000	mmho/m	0.000	0.000	mmho/m	0.000	0.000
Medium	0.000	0.000	mmho/m	0.000	0.000	mmho/m	0.000	0.000
LL3		1.000	Ohm-m		1.000	Ohm-m		
		0.000	Ohm-m		0.000	Ohm-m		
		1.000	mmho-m		1.000	mmho-m		

Compensated Density Calibration Report

Serial-Model: GEAR2-GEARHART
 Source / Verifier: 147 / 147
 Master Calibration Performed: Mon Jun 04 06:47:29 2012

Master Calibration

	Density		Far Detector	Near Detector	
Magnesium	1.710	g/cc	1203.63	642.89	cps
Aluminum	2.590	g/cc	267.51	439.63	cps
Spine Angle = 75.82			Density/Spine Ratio = 0.567		
	Size		Reading		
Small Ring	8.10	in	7.40	V	
Large Ring	14.00	in	8.90	V	

Compensated Neutron Calibration Report

Serial Number: NUE_2I
Tool Model: G

CALIBRATION

Detector	Readings	Target	Normalization
Short Space	1.00 cps	1.00 cps	1.0000
Long Space	1.00 cps	1.00 cps	1.0000

Gamma Ray Calibration Report

Serial Number: GR5
Tool Model: OPEN
Performed: Mon Jun 04 06:47:04 2012

Calibrator Value: 1.0 GAPI

Background Reading: 0.0 cps
Calibrator Reading: 1.0 cps

Sensitivity: 0.7500 GAPI/cps