

**SUPERIOR
Hays,
Kansas**

**MICRO
LOG**

Company GORE OIL COMPANY
Well PLANTE "C" #1
Field PLAINVILLE
County ROOKS State KANSAS

Location: API #: 15-163-24022
1650' FNL & 1650' FWL
SEC 17 TWP 10S RGE 17W
Permanent Datum GROUND LEVEL Elevation 2137
Log Measured From KELLY BUSHING 8' A.G.L.
Drilling Measured From KELLY BUSHING
Other Services
CDL/CNL
DIL
Elevation
K.B. 2145
D.F.
G.L. 2137

Date	6-4-12
Run Number	TW0
Depth Driller	3694
Depth Logger	3695
Bottom Logged Interval	3693
Top Log Interval	3000
Casing Driller	263
Casing Logger	263
Bit Size	7.875
Type Fluid in Hole	CHEMICAL MUD
Density / Viscosity	9.3 / 55
pH / Fluid Loss	10.0 / 7.8
Source of Sample	FLOWLINE
Rim @ Meas. Temp	0.70 @ 87F
Rmf @ Meas. Temp	0.53 @ 87F
Rmc @ Meas. Temp	0.84 @ 87F
Source of Rmf / Rmc	MEASURED
Rim @ BHT	.540 @ 112F
Time Circulation Stopped	3 HOURS
Time Logger on Bottom	6:45 A.M.
Maximum Recorded Temperature	112F
Equipment Number	860
Location	HAYS, KS.
Recorded By	RUPP
Witnessed By	MARC DOWNING

<<< Fold Here >>>

All interpretations are opinions based on inferences from electrical or other measurements and we cannot and do not guarantee the accuracy or correctness of any interpretation, and we shall not, except in the case of gross or willful negligence on our part, be liable or responsible for any loss, costs, damages, or expenses incurred or sustained by anyone resulting from any interpretation made by any of our officers, agents or employees. These interpretations are also subject to our general terms and conditions set out in our current Price Schedule.

Comments

SUPERIOR WELL SERVICES
785-628-6395
THANK YOU FOR YOUR BUSINESS
DIRECTIONS: PLAINVILLE, S TO "AA" RD., (AIRPORT RD.), 3 1/4E, S INTO.



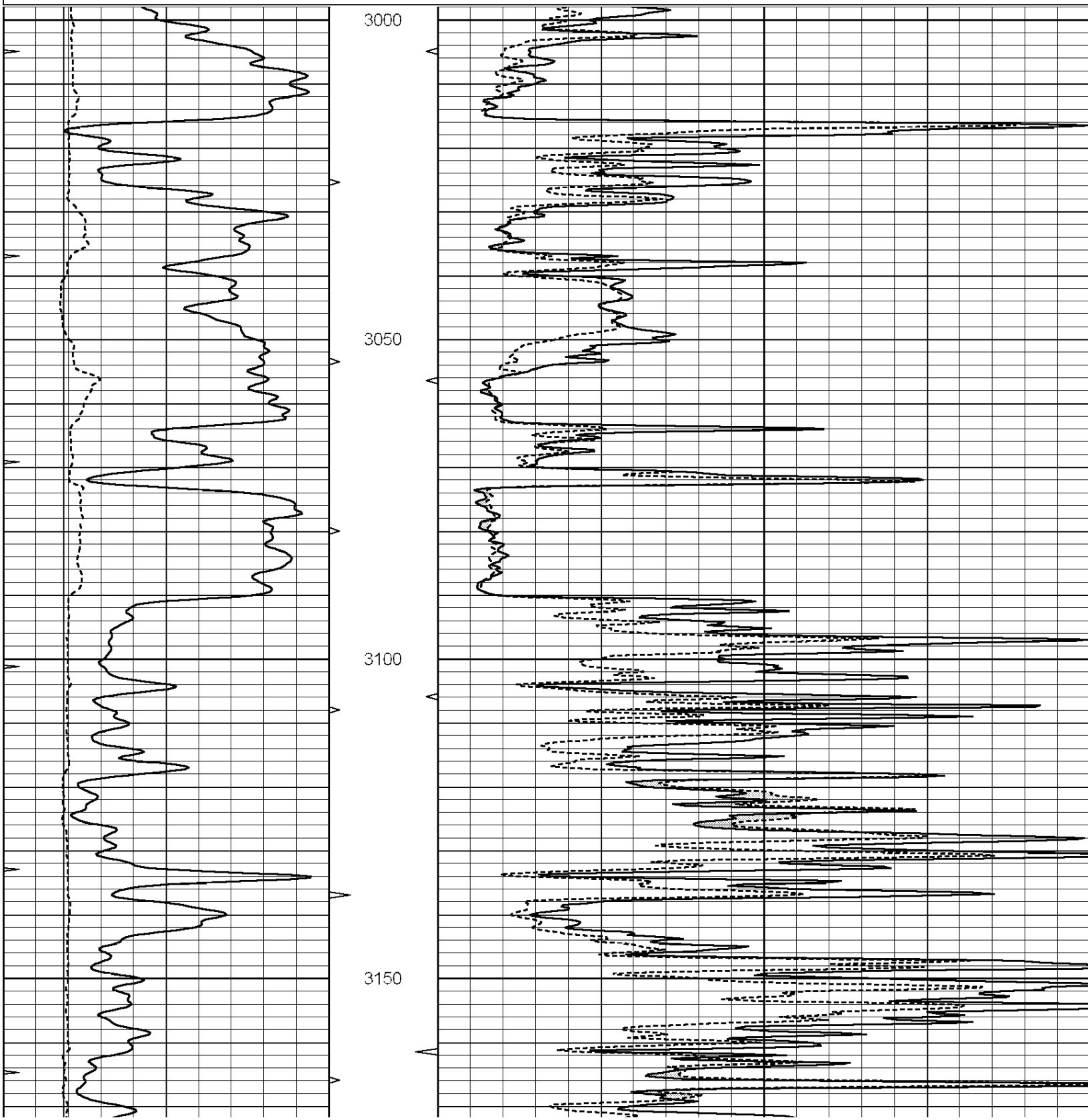
**SUPERIOR
Hays,
Kansas**

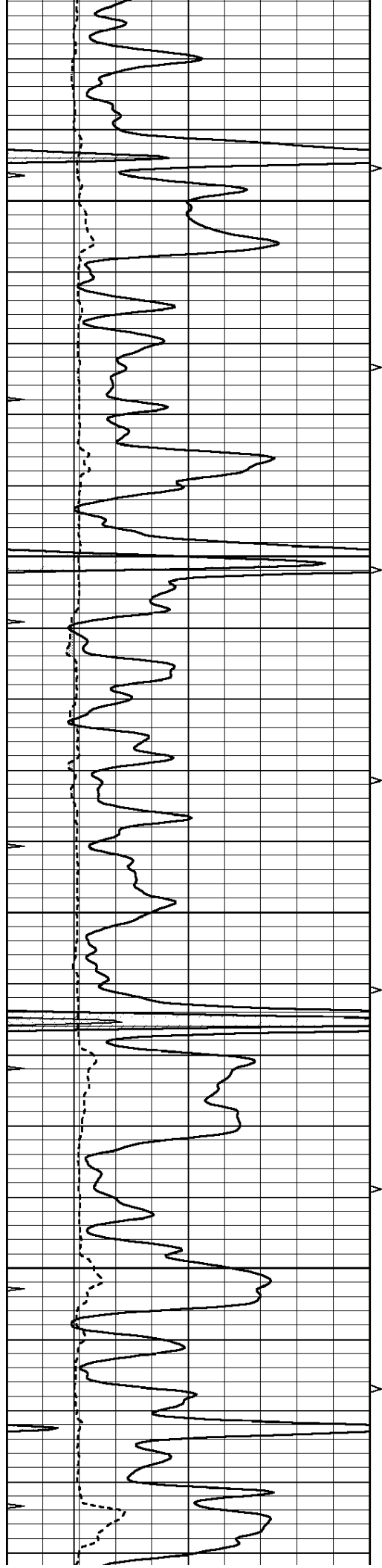
MAIN SECTION

Database File: 008783ddn.db
 Dataset Pathname: pass5
 Presentation Format: micro
 Dataset Creation: Mon Jun 04 08:43:53 2012 by Log Open-Cased 090629
 Charted by: Depth in Feet scaled 1:240

0	GAMMA RAY (GAPI)	150
6	MELCAL (in)	16
0	MINMK	20

0	MEL1.5 (Ohm-m)	40
0	MEL2.0 (Ohm-m)	40



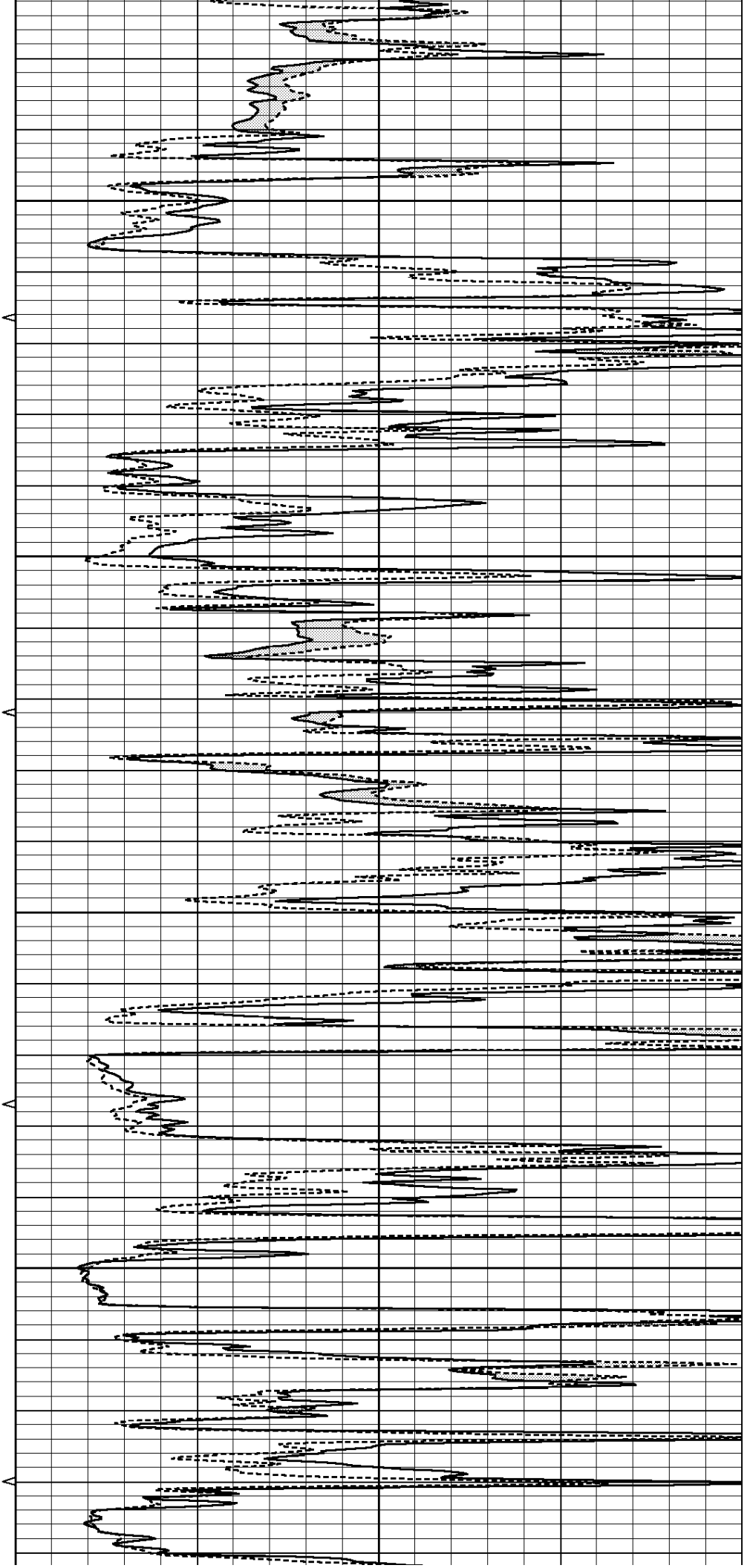


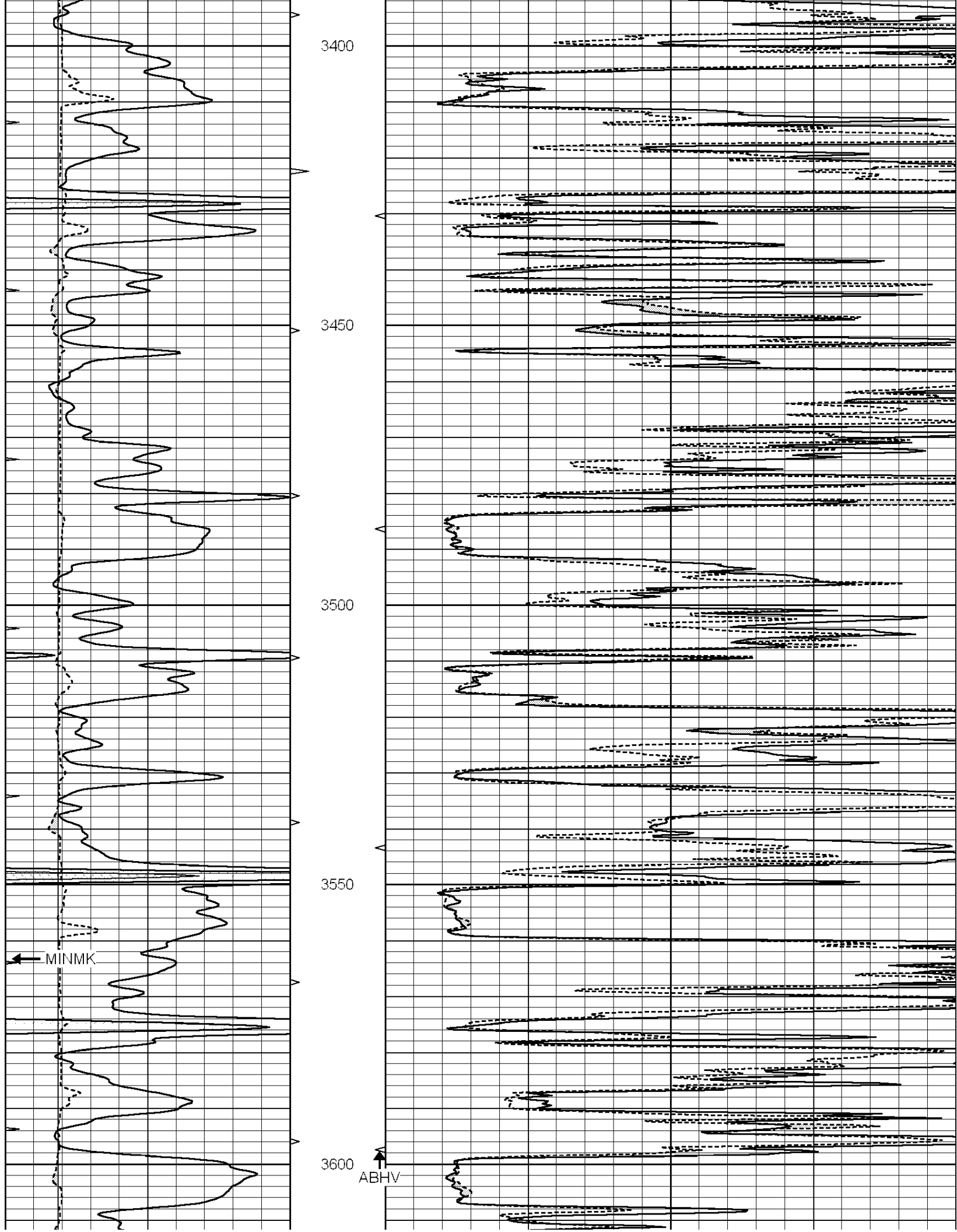
3200

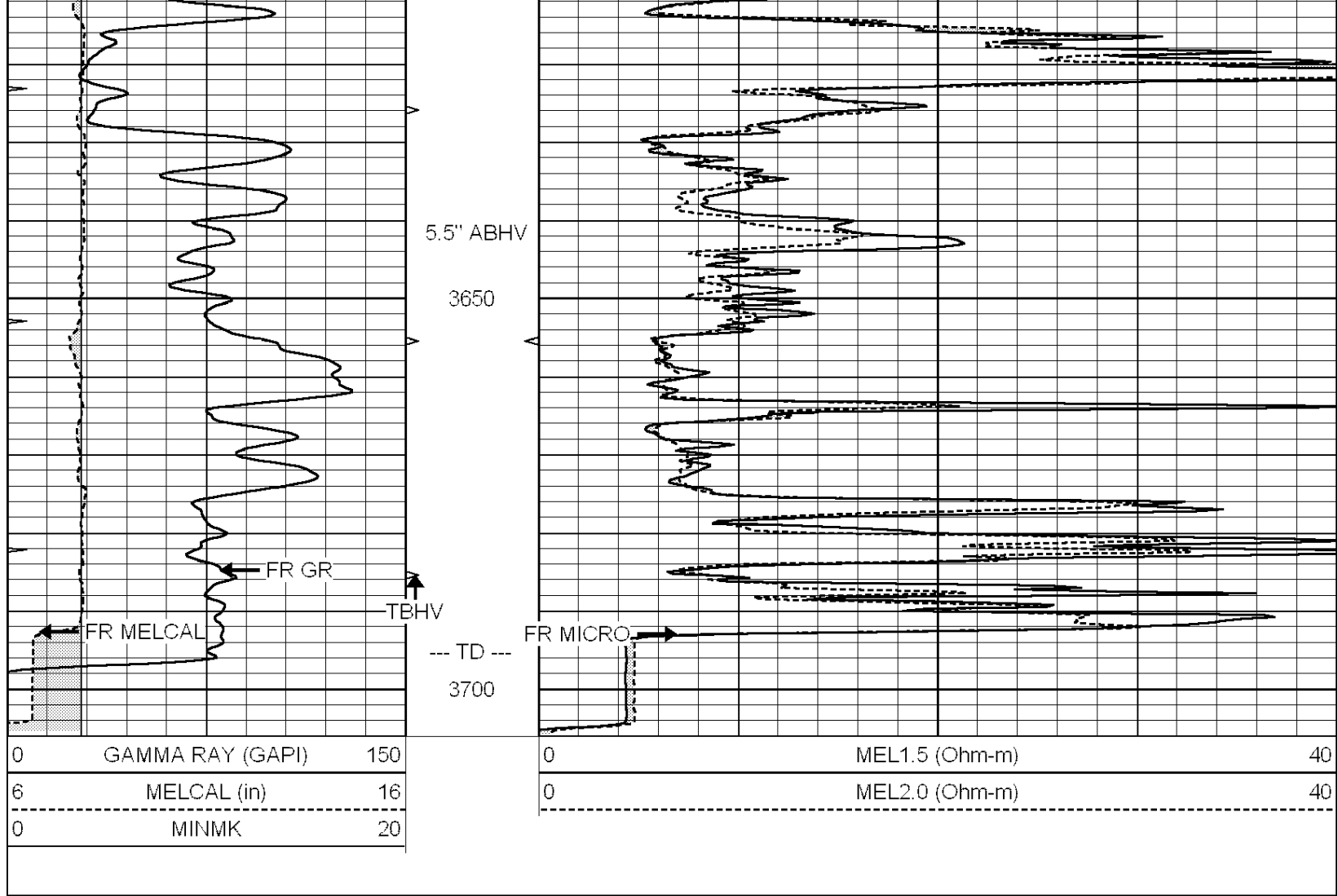
3250

3300

3350





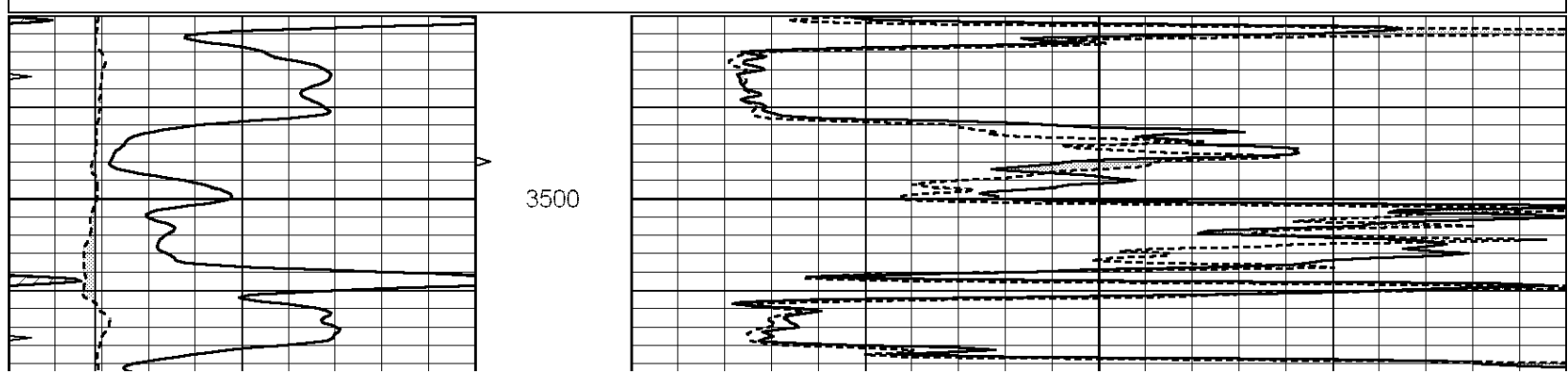


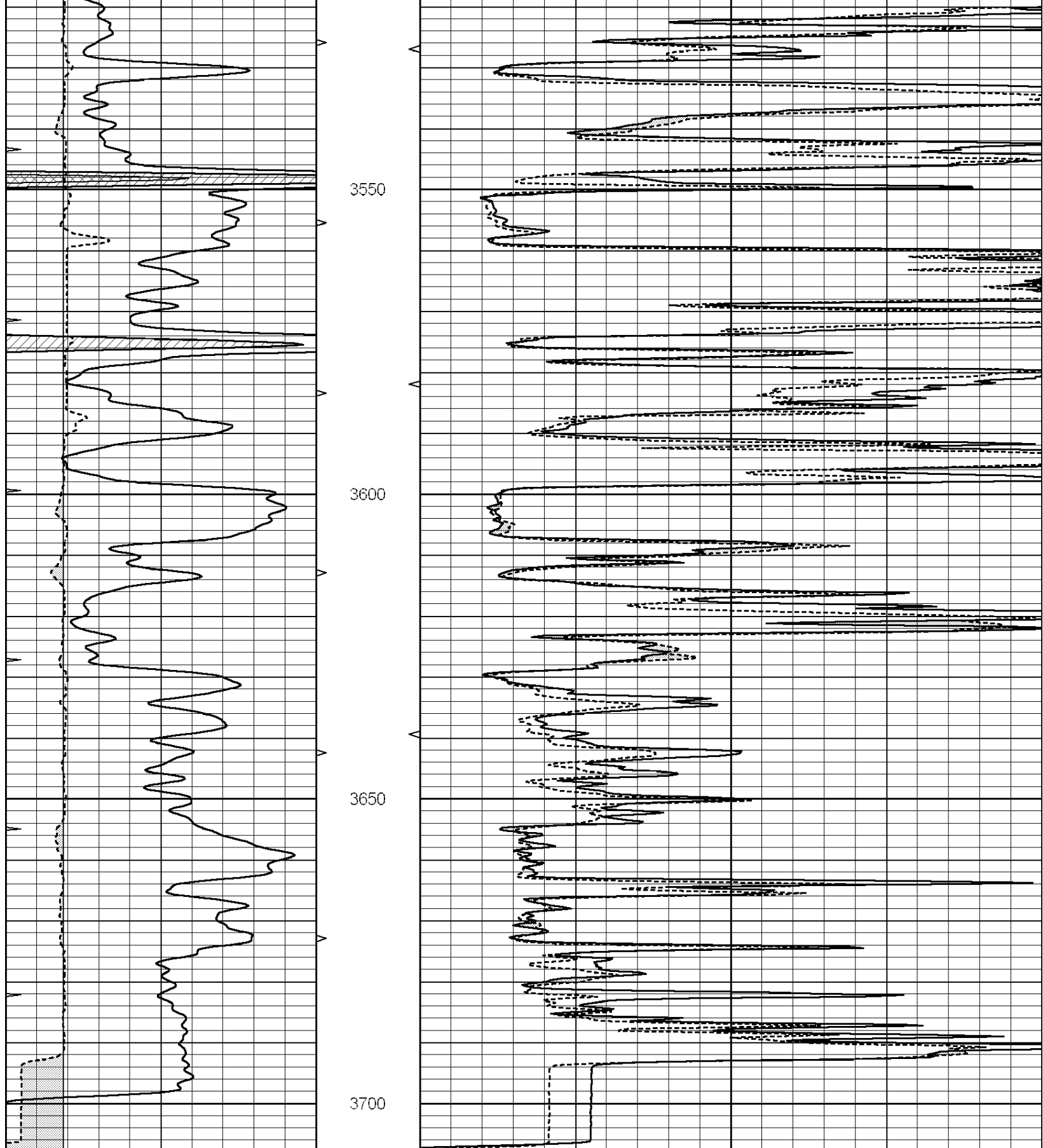
SUPERIOR
Hays,
Kansas

REPEAT SECTION

Database File: 008783ddn.db
 Dataset Pathname: pass4.1
 Presentation Format: micro
 Dataset Creation: Mon Jun 04 08:43:05 2012 by Calc Open-Cased 090629
 Charted by: Depth in Feet scaled 1:240

0	GAMMA RAY (GAPI)	150	0	MEL1.5 (Ohm-m)	40
6	MELCAL (in)	16	0	MEL2.0 (Ohm-m)	40
0	MINMK	20			





0	GAMMA RAY (GAPI)	150
6	MELCAL (in)	16
0	MINMK	20

0	MEL1.5 (Ohm-m)	40
0	MEL2.0 (Ohm-m)	40

Database File: 008783ddn.db
Dataset Pathname: pass5
Dataset Creation: Mon Jun 04 08:43:53 2012 by Log Open-Cased 090629

MICRO Calibration Report

Serial Number: MICRO4
Tool Model: PROBE
Performed: Sun Jun 03 05:02:09 2012

Caliper Calibration:	Gain=1.157	Offset=1.494
References	Low Cal 7.800	High Cal 11.000
Readings	5.449	8.214

1.5" Calibration:	Gain=40.000	Offset=-0.400
References	Low Cal 0.000	High Cal 20.000
Readings	0.009	1.541

2" Calibration:	Gain=46.000	Offset=0.600
References	Low Cal 0.000	High Cal 20.000
Readings	0.004	1.198

Gamma Ray Calibration Report

Serial Number: GR5
Tool Model: OPEN
Performed: Mon Jun 04 08:42:07 2012

Calibrator Value:	1.0	GAPI
Background Reading:	0.0	cps
Calibrator Reading:	1.0	cps
Sensitivity:	0.7500	GAPI/cps