



**TRILOBITE
TESTING, INC.**

DRILL STEM TEST REPORT

Shakespeare Oil Co Inc

14-14s-32w Logan,KS

202 W Main St
Salem, IL 62881

K Ottley #1-14

ATTN: Steve Davis

Job Ticket: 46592

DST#: 5

Test Start: 2012.06.03 @ 19:25:15

GENERAL INFORMATION:

Formation: **J**
 Deviated: **No** Whipstock: **0.00 ft (KB)**
 Time Tool Opened: 20:56:30
 Time Test Ended: 01:06:45
 Interval: **4046.00 ft (KB) To 4072.00 ft (KB) (TVD)**
 Total Depth: **4072.00 ft (KB) (TVD)**
 Hole Diameter: **7.88 inches** Hole Condition: **Fair**
 Test Type: **Conventional Bottom Hole (Reset)**
 Tester: **Cole Archibald**
 Unit No: **55**
 Reference Elevations: **2824.00 ft (KB)**
2819.00 ft (CF)
 KB to GR/CF: **5.00 ft**

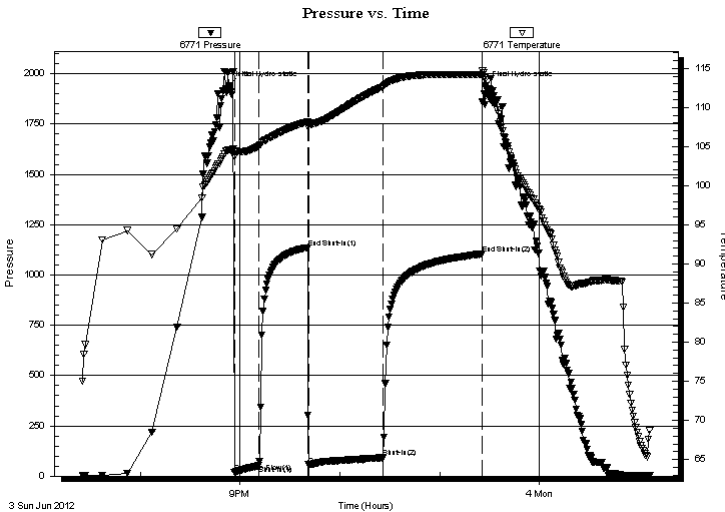
Serial #: 6771

Outside

Press @ Run Depth: **91.56 psig @ 4047.00 ft (KB)** Capacity: **8000.00 psig**
 Start Date: **2012.06.03** End Date: **2012.06.04** Last Calib.: **2012.06.04**
 Start Time: **19:25:15** End Time: **01:06:45** Time On Btm: **2012.06.03 @ 20:53:00**
 Time Off Btm: **2012.06.03 @ 23:27:30**

TEST COMMENT: 1/2 inch blow
no return
built to 1.5 inch
no return

PRESSURE SUMMARY



Time (Min.)	Pressure (psig)	Temp (deg F)	Annotation
0	1940.43	104.57	Initial Hydro-static
4	19.94	103.70	Open To Flow (1)
19	54.30	105.06	Shut-In(1)
48	1135.84	108.14	End Shut-In(1)
48	56.27	107.83	Open To Flow (2)
93	91.56	112.65	Shut-In(2)
153	1104.62	114.20	End Shut-In(2)
155	1941.14	113.56	Final Hydro-static

Recovery

Length (ft)	Description	Volume (bbl)
150.00	mw 50/50	0.97
5.00	o 100	0.07

* Recovery from multiple tests

Gas Rates

Choke (inches)	Pressure (psig)	Gas Rate (Mcf/d)



**TRILOBITE
TESTING, INC.**

DRILL STEM TEST REPORT

FLUID SUMMARY

Shakespeare Oil Co Inc

14-14s-32w Logan,KS

202 W Main St
Salem, IL 62881

K Ottley #1-14

Job Ticket: 46592

DST#: 5

ATTN: Steve Davis

Test Start: 2012.06.03 @ 19:25:15

Mud and Cushion Information

Mud Type: Gel Chem

Cushion Type:

Oil API:

deg API

Mud Weight: 9.00 lb/gal

Cushion Length:

ft

Water Salinity:

ppm

Viscosity: 52.00 sec/qt

Cushion Volume:

bbbl

Water Loss: 7.98 in³

Gas Cushion Type:

Resistivity: 0.00 ohm.m

Gas Cushion Pressure:

psig

Salinity: 3000.00 ppm

Filter Cake: 1.00 inches

Recovery Information

Recovery Table

Length ft	Description	Volume bbbl
150.00	mw 50/50	0.975
5.00	o 100	0.070

Total Length: 155.00 ft

Total Volume: 1.045 bbl

Num Fluid Samples: 0

Num Gas Bombs: 0

Serial #:

Laboratory Name:

Laboratory Location:

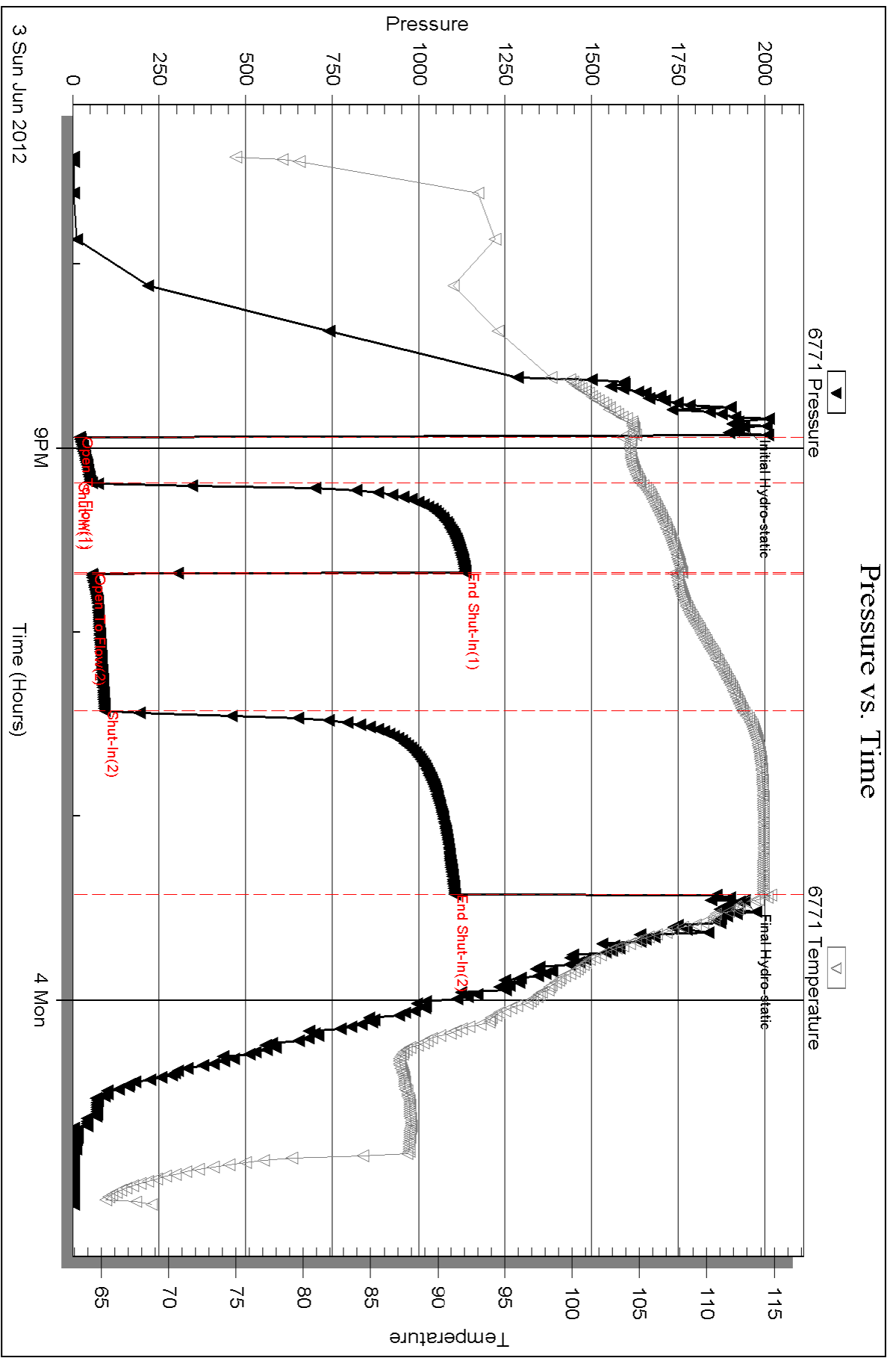
Recovery Comments:

Serial #: 6771

Outside Shakespeare Oil Co Inc

K Otley #1-14

DST Test Number: 5



Triobite Testing, Inc

Ref. No: 46592

Printed: 2012.06.04 @ 08:39:22