

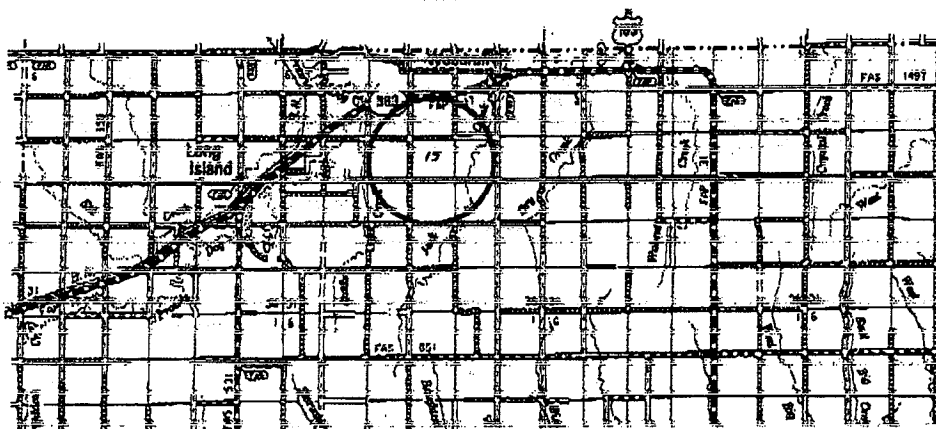
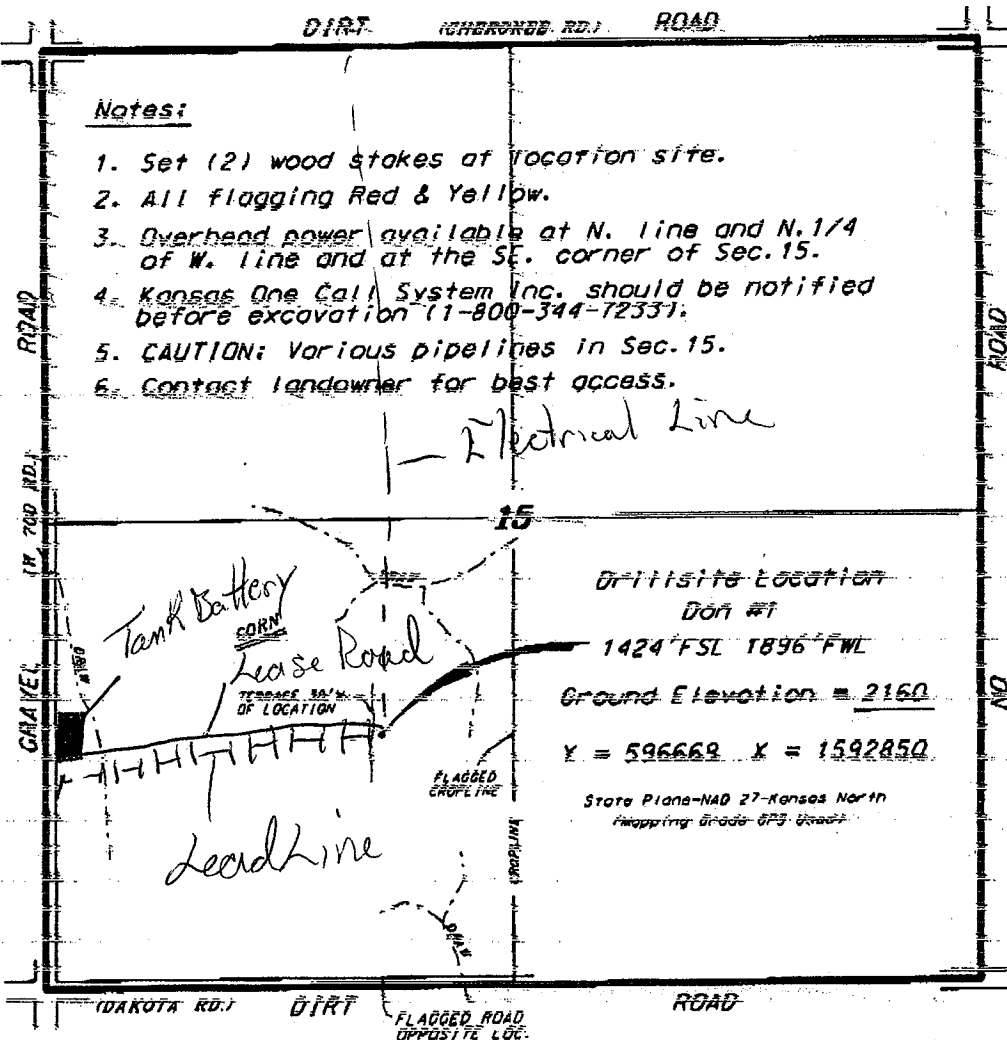
BACH OIL PRODUCTION, INC.  
 DON LEASE  
 SW. 1/4, SECTION 15, T15, R19W  
 PHILLIPS COUNTY, KANSAS

DIRT (CHERRYBROOK RD.) ROAD

Notes:

1. Set (2) wood stakes at location site.
2. All flagging Red & Yellow.
3. Overhead power available at N. line and N. 1/4 of W. line and at the SE. corner of Sec. 15.
4. Kansas One Call System Inc. should be notified before excavation (1-800-344-7233).
5. CAUTION: Various pipelines in Sec. 15.
6. Contact landowner for best access.

\* Egress and access to location as shown on this plat is for usage only and may not be legally changed for public use. Contact landowner, tenant and county road department for access.



© Copyright 2012 by Central Kansas Oilfield Services, Inc. All rights reserved. This plat is for use only upon a regular section of land containing 360 acres.  
 All measurements shown here were determined using the normal standards of care of all field surveys practiced in the state of Kansas. The section corners, which establish the precise section lines, were not necessarily located, and the exact location of the Drillsite location in the section is not guaranteed. Therefore, the user assumes the risk and liability for any error or omission resulting therefrom. This plat is the property of Central Kansas Oilfield Services, Inc. Its officers and employees are released from all claims, costs and damages and said drillsites released from any liability for the inclusion or exclusion of any errors.  
 \* Elevations derived from National Geodetic Vertical Datum.

June 14, 2012