



Wellbore Schematic

WELL: Farm Credit Bank 22-3

SSI: 625850

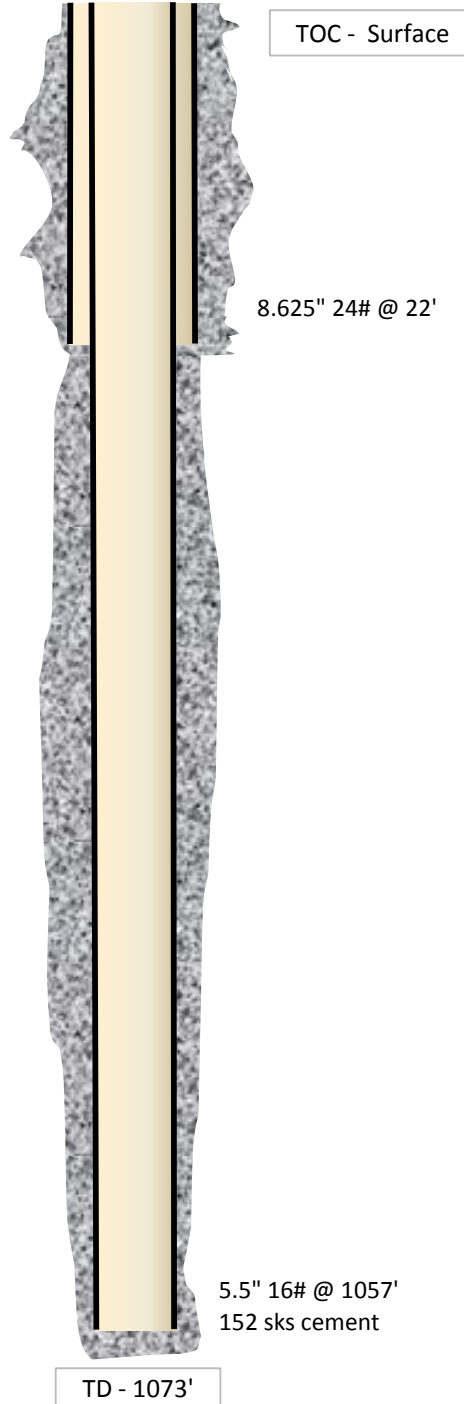
API: 15-099-24237

LOCATION: NE SE Sec. 22 31S-18E

COUNTY: Labette

STATE: Kansas

Casing	<p>8.625" 24# @ 22'</p> <p>5.5" 16# J-55, 5.01" ID w/ 0.0238 bbl/ft capacity @ 1057'</p>
Perforations	<p>Original Perfs: 3/21/08</p> <ul style="list-style-type: none"> - Neutral 884-886' (9) - Rowe 877-879' (9) - Tebo 733-735' (9) - Fleming 640-642' 99) - Croweburg 604-607' 913) - Bevier 578-580' (9) - Mulky 522-526' (17) - Summit 495-499' (17)
Completions	<p>Spud Date: 1/25/08</p> <p>RN Completion: 3/21/08</p> <ul style="list-style-type: none"> - 500 gals 15% HCl - 12.2 BPM - 2,600# 20/40 - 544 bbls fluid <p>BCFT Completion: 3/25/08</p> <ul style="list-style-type: none"> - 400 gals 15% HCl - 14.9 BPM - 1,100# 20/40 - 307 bbls fluid <p>SM Completion: 3/25/08</p> <ul style="list-style-type: none"> - 400 gals 15% HCl - 14.1 BPM - 6,300# 20/40 - 651 bbls fluid



TOC - Surface

8.625" 24# @ 22'

5.5" 16# @ 1057'
152 sks cement

TD - 1073'