



## Wellbore Schematic

**WELL:** Erbe Rev Trust 30-1

**SSI:** 606260

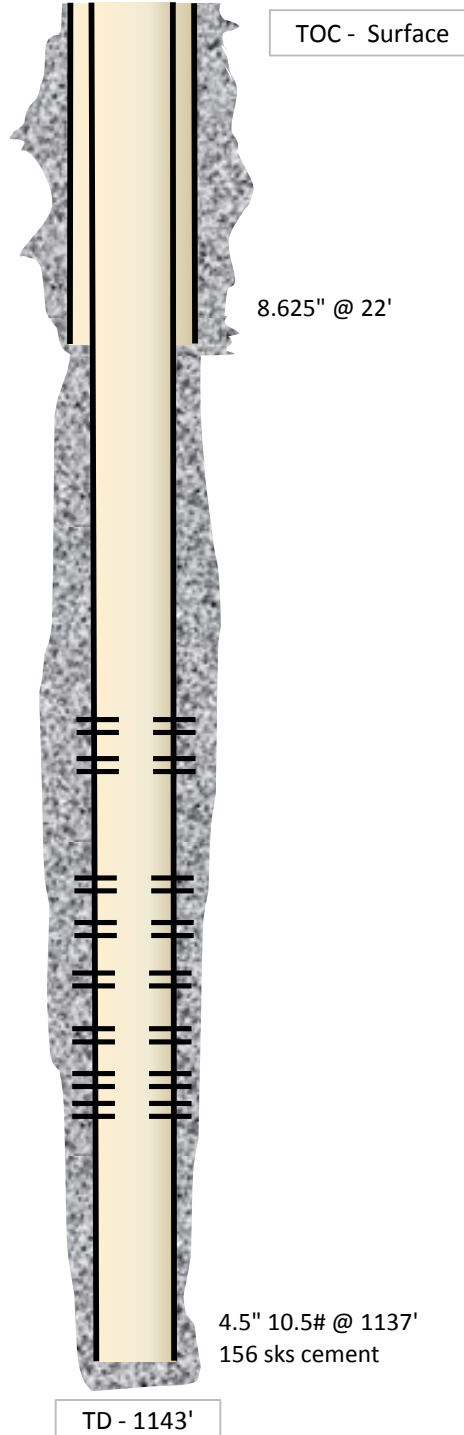
**API:** 15-133-26178

**LOCATION:** NW NE Sec. 30 29S-18E

**COUNTY:** Neosho

**STATE:** Kansas

Casing	<p>8.625" @ 22'</p> <p>4.5" 10.5# J-55, 4.05" ID w/ 0.0159 bbl/ft capacity @ 1137'</p>
Perforations	<p>Original Perfs: 11/16/04</p> <ul style="list-style-type: none"> <li>- Mulky 676-679' (13)</li> <li>- Summit 664-667.5 (15)</li> </ul> <p>Recomp Perfs: 2/20/06</p> <ul style="list-style-type: none"> <li>- Weir 941-943' (9)</li> <li>- Weir 921-923' (9)</li> <li>- Tebo 887-890' (9)</li> <li>- Fleming 816-819' (13)</li> <li>- Croweburg 780-783' (13)</li> <li>- Bevier 757-759' (9)</li> </ul>
Completions	<p>Spud Date: 10/6/04</p> <p>SM Completion: 12/23/04</p> <ul style="list-style-type: none"> <li>- 500 gals 15% HCl</li> <li>- 12 BPM</li> <li>- 12,000# 20/40</li> <li>- 421 bbls fluid</li> </ul> <p>SM Flush: 2/17/06</p> <ul style="list-style-type: none"> <li>- 500 gals 15% HCl</li> </ul> <p>TWW Completion: 2/21/06</p> <ul style="list-style-type: none"> <li>- 500 gals 15% HCl</li> <li>- 10 BPM</li> <li>- 5,100# 20/40</li> <li>- 392 bbls fluid</li> </ul> <p>BCF Completion: 2/21/06</p> <ul style="list-style-type: none"> <li>- 600 gals 15% HCl</li> <li>- 13.6 BPM</li> <li>- 2,200# 20/40</li> <li>- 206 bbls fluid</li> <li>- Communication up back-side</li> </ul> <p>BCF Re-Stim: 2/22/06</p> <ul style="list-style-type: none"> <li>- 16 BPM</li> <li>- 13,700# 20/40</li> <li>- 552 bbls fluid</li> </ul>



TOC - Surface

8.625" @ 22'

4.5" 10.5# @ 1137'  
156 sks cement

TD - 1143'