



Wellbore Schematic

WELL: McCoy Virginia 30-2

SSI: 624810

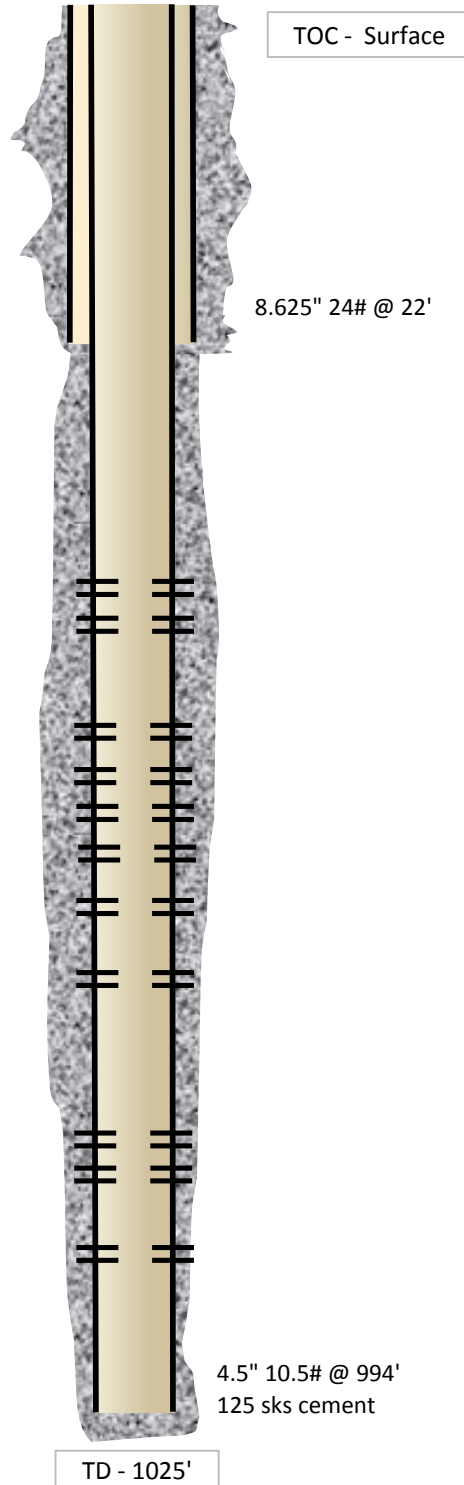
API: 15-133-27242

LOCATION: NE NW Sec. 30 28S-19E

COUNTY: Neosho

STATE: Kansas

Casing	<p>8.625" 24# @ 22'</p> <p>4.5" 10.5# J-55, 4.05" ID w/ 0.0159 bbl/ft capacity @ 994'</p>
Perforations	<p>Original Perfs: 3/10/08</p> <ul style="list-style-type: none"> - Riverton 897-900' (13) - Neutral 847-849' (9) - Rowe 841-843' (9) - Weir 743-745' (9) - Tebo 695-697' (9) - Fleming 652-654' (9) - Fleming 635-637' (9) - Croweburg 597-600' (13) - Bevier 572-574' (9) - Mulky 488-492' (17) - Summit 476-480' (17)
Completions	<p>Spud Date: 10/23/07</p> <p>RNV Completion: 3/10/08</p> <ul style="list-style-type: none"> - 300 gals 15% HCl - 11.7 BPM - 2,800# 20/40 - 518 bbls fluid <p>FTW Completion: 3/10/08</p> <ul style="list-style-type: none"> - 400 gals 15% HCl - 12 BPM - 2,400# 20/40 - 385 bbls fluid <p>BCFFTW Completion: 3/10/08</p> <ul style="list-style-type: none"> - 400 gals 15% HCl - 18.5 BPM - 3,100# 20/40 - 406 bbls fluid <p>SM Completion: 3/10/08</p> <ul style="list-style-type: none"> - 400 gals 15% HCl - 15 BPM - 5,500# 20/40 - 608 bbls fluid



TOC - Surface

8.625" 24# @ 22'

4.5" 10.5# @ 994'
125 sks cement

TD - 1025'