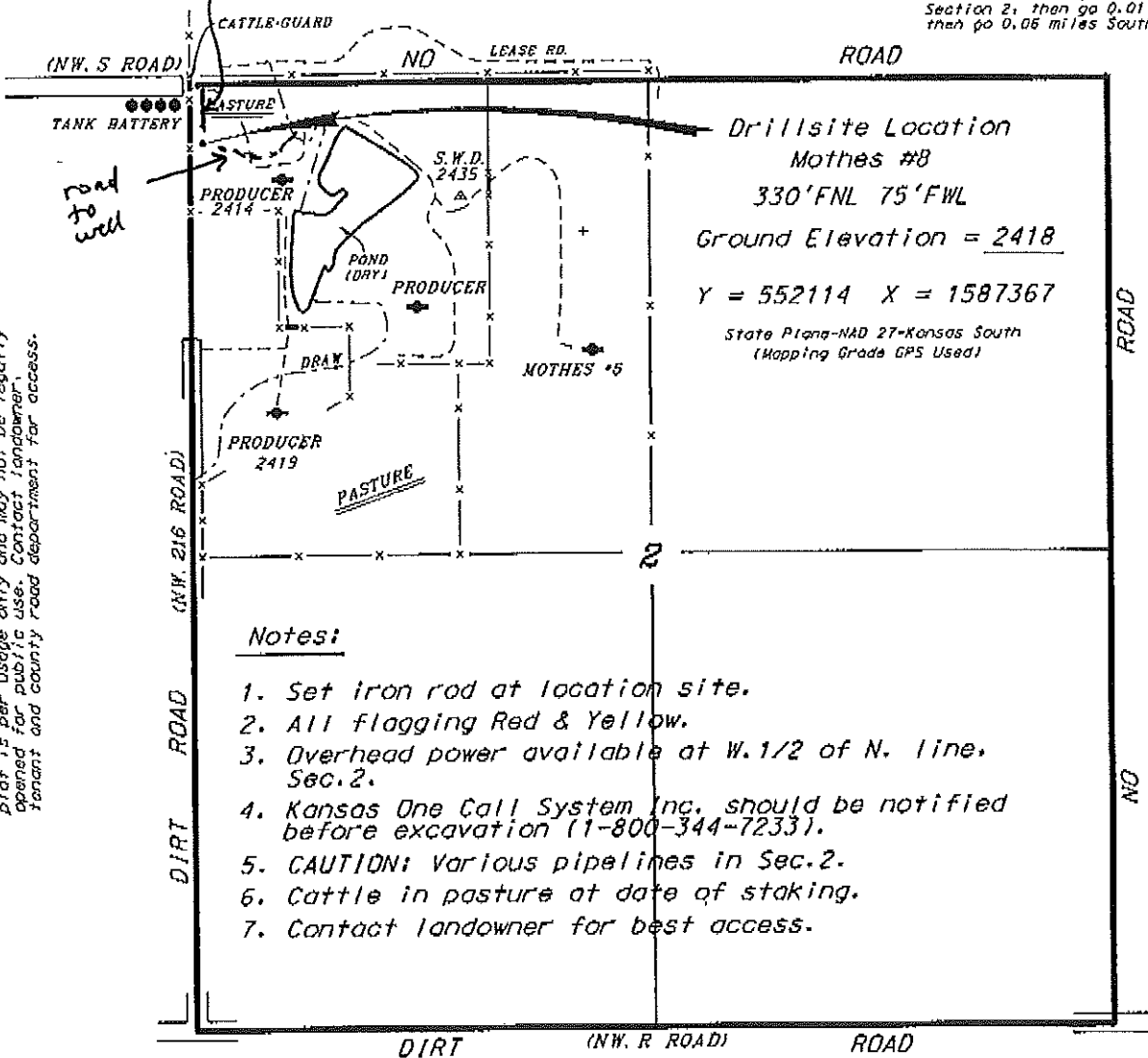


VESS OIL CORPORATION
MOTHES LEASE
NW. 1/4, SECTION 2, T22S, R24W
HODGEMAN COUNTY, KANSAS

Directions:

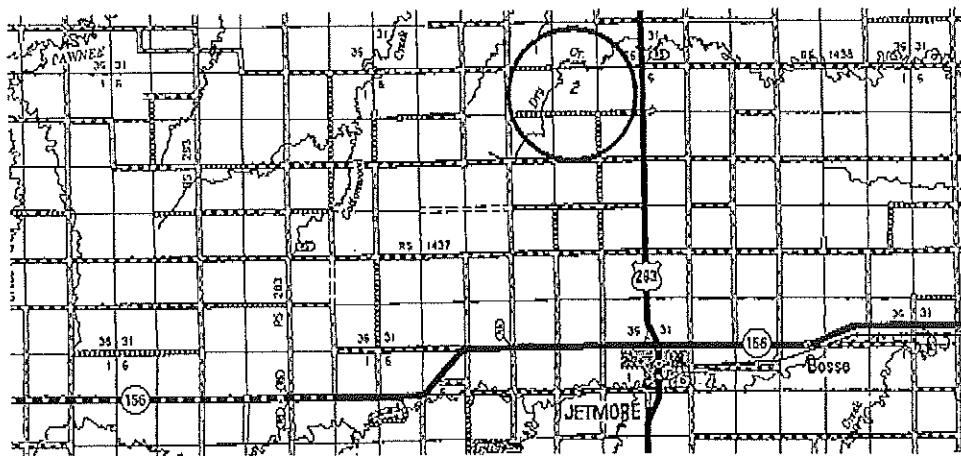
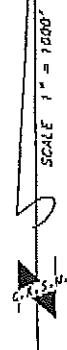
From the intersection of Highway 283 and Highway 156 in Jetmore, Kansas go 3.25 miles West on Highway 156. Then go 6.0 miles North, then go 1.0 miles East to the NW. corner of Section 2, then go 0.01 miles East, then go 0.06 miles South to location.



Notes:

1. Set iron rod at location site.
2. All flagging Red & Yellow.
3. Overhead power available at W. 1/2 of N. line, Sec. 2.
4. Kansas One Call System Inc. should be notified before excavation (1-800-344-7233).
5. CAUTION: Various pipelines in Sec. 2.
6. Cattle in pasture at date of staking.
7. Contact landowner for best access.

*Ingress and egress to location as shown on this plat is for usage only and may not be legally opened for public use. Contact landowner, tenant and county road department for access.



Controlling data is based upon the best maps and topographs available to us and upon a regular section of land containing 640 acres.

Approximate section lines were determined using the normal standard of care of oilfield surveyors practicing in the state of Kansas. The section corners, which establish the precise section lines, were not necessarily located, and the exact location of the drillsite location in the section is not guaranteed. Therefore, the operator securing this service and occupying this plat and all other parties relying thereon agree to hold Central Kansas Oilfield Services, Inc., its officers and employees harmless from all losses, costs and expenses and said entities released from any liability from incidental or consequential damages.

Elevations derived from National Geodetic Vertical Datum.

Date June 13, 2012