



**TRILOBITE
TESTING, INC.**

DRILL STEM TEST REPORT

Samuel Gary Jr. and Associates, Inc.

7-16-16 Rush, Ks

1515 Wynkoop St. Ste 700
Denver, CO 80202

Stramel 2-7

Job Ticket: 36063

DST#: 2

ATTN: Clayton Camozzi

Test Start: 2012.03.04 @ 02:15:52

GENERAL INFORMATION:

Formation: **Penn Sand**

Deviated: No Whipstock: ft (KB)

Time Tool Opened: 03:54:22

Time Test Ended: 08:50:52

Test Type: Conventional Bottom Hole (Reset)

Tester: Brian Fairbank

Unit No: 41

Interval: 3460.00 ft (KB) To 3520.00 ft (KB) (TVD)

Reference Elevations: 1958.00 ft (KB)

Total Depth: 3520.00 ft (KB) (TVD)

1950.00 ft (CF)

Hole Diameter: 7.88 inches Hole Condition: Good

KB to GR/CF: 8.00 ft

Serial #: 8734 Outside

Press @ Run Depth: 40.22 psig @ 3502.00 ft (KB)

Capacity: 8000.00 psig

Start Date: 2012.03.04

End Date:

2012.03.04

Last Calib.:

1899.12.30

Start Time: 02:15:53

End Time:

08:50:52

Time On Btm:

2012.03.04 @ 03:53:22

Time Off Btm:

2012.03.04 @ 06:26:52

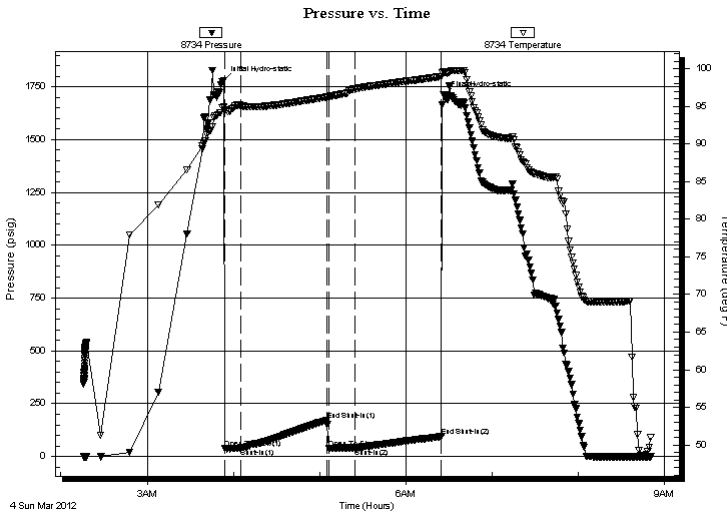
TEST COMMENT: 10 - IFP - weak blow throughout 1/4" - 1"

60 - ISI - no blow back

20 - FFP - sur blow - died 7 min

60 - FSI - no blow back

PRESSURE SUMMARY



Time (Min.)	Pressure (psig)	Temp (deg F)	Annotation
0	1780.76	94.91	Initial Hydro-static
1	37.06	94.52	Open To Flow (1)
12	38.37	95.11	Shut-In(1)
72	171.34	96.25	End Shut-In(1)
73	39.23	96.25	Open To Flow (2)
92	40.22	97.34	Shut-In(2)
152	94.23	98.96	End Shut-In(2)
154	1706.44	99.51	Final Hydro-static

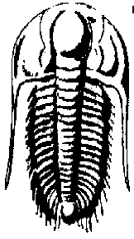
Recovery

Length (ft)	Description	Volume (bbl)
5.00	V SOCM 2%O, 98%M	0.02

Gas Rates

Choke (inches)	Pressure (psig)	Gas Rate (Mcf/d)

* Recovery from multiple tests



**TRILOBITE
TESTING, INC.**

DRILL STEM TEST REPORT

FLUID SUMMARY

Samuel Gary Jr. and Associates, Inc.

7-16-16 Rush, Ks

1515 Wynkoop St. Ste 700
Denver, CO 80202

Stramel 2-7

Job Ticket: 36063

DST#: 2

ATTN: Clayton Camozzi

Test Start: 2012.03.04 @ 02:15:52

Mud and Cushion Information

Mud Type: Gel Chem

Cushion Type:

Oil API:

deg API

Mud Weight: 9.00 lb/gal

Cushion Length:

ft

Water Salinity:

ppm

Viscosity: 53.00 sec/qt

Cushion Volume:

bbbl

Water Loss: 8.77 in³

Gas Cushion Type:

Resistivity: ohm.m

Gas Cushion Pressure:

psig

Salinity: 3800.00 ppm

Filter Cake: inches

Recovery Information

Recovery Table

Length ft	Description	Volume bbl
5.00	VSOCM 2%O, 98%M	0.025

Total Length: 5.00 ft Total Volume: 0.025 bbl

Num Fluid Samples: 0

Num Gas Bombs: 0

Serial #:

Laboratory Name:

Laboratory Location:

Recovery Comments: 80 ml O, 3920 ml M 42 LBS

