

OPERATOR

Company: TDI, INC
 Address: 1310 BISON ROAD
 HAYS, KANSAS 67601

Contact Geologist: TOM DENNING
 Contact Phone Nbr: 785-259-3141
 Well Name: JOY # 1
 Location: SW NE NE NW Sec.24-12s-19w API: 15-051-26,289-00-00
 Pool: WILDCAT Field: UNNAMED
 State: KANSAS Country: USA



TDI, Inc.
 1310 BISON ROAD
 HAYS, KANSAS 67601
 (785) 628-2593

Scale 1:240 Imperial

Well Name: JOY # 1
 Surface Location: SW NE NE NW Sec.24-12s-19w
 Bottom Location:
 API: 15-051-26,289-00-00
 License Number: 4787
 Spud Date: 6/2/2012 Time: 2:30 PM
 Region: ELLIS COUNTY
 Drilling Completed: 6/7/2012 Time: 1:13 PM
 Surface Coordinates: 500' FNL & 2250' FWL
 Bottom Hole Coordinates:
 Ground Elevation: 2220.00ft
 K.B. Elevation: 2230.00ft
 Logged Interval: 3150.00ft To: 3895.00ft
 Total Depth: 3899.00ft
 Formation: LANSING-KANSAS CITY
 Drilling Fluid Type: Chemical/Fresh Water Gel

SURFACE CO-ORDINATES

Well Type: Vertical Latitude:
 Longitude:
 N/S Co-ord: 500' FNL
 E/W Co-ord: 2250' FWL

LOGGED BY

Company: SOLUTIONS CONSULTING
 Address: 108 W 35TH
 HAYS, KS 67601
 Phone Nbr: (785) 639-1337
 Logged By: Geologist Name: HERB DEINES

CONTRACTOR

Contractor: SOUTHWIND DRILLING INC
 Rig #: 1
 Rig Type: MUD ROTARY
 Spud Date: 6/2/2012 Time: 2:30 PM
 TD Date: 6/7/2012 Time: 1:13 PM
 Rig Release: 6/8/2012 Time: 8:00 PM

ELEVATIONS

K.B. Elevation: 2230.00ft Ground Elevation: 2220.00ft
 K.B. to Ground: 10.00ft

NOTES

RECOMMENDATION TO PLUG AND ABANDON WELL DUE TO NEGATIVE RESULTS OF THREE DSTS COVERING ALL OF THE LANSING-KANSAS CITY ZONES. NO CONGLOMERATE SAND WAS FOUND AND THE ARBUCKLE WAS TOO LOW FOR PRODUCTION.


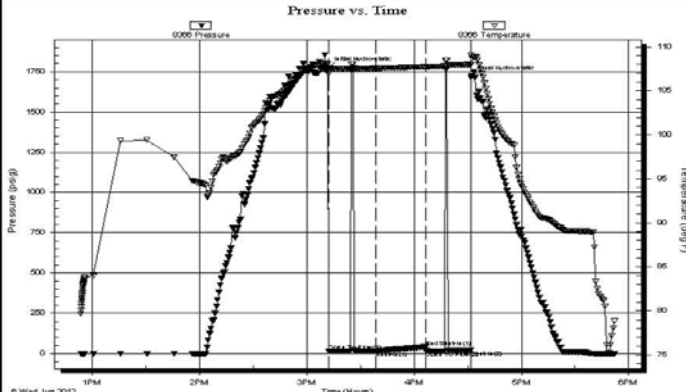
FORMATION TOPS AND SUMMARY OF DAILY DEPTH AND ACTIVITY

JOY #1
 SW NE NE NW
 Sec.24-12s-19w
 2220' GL 2230' KB


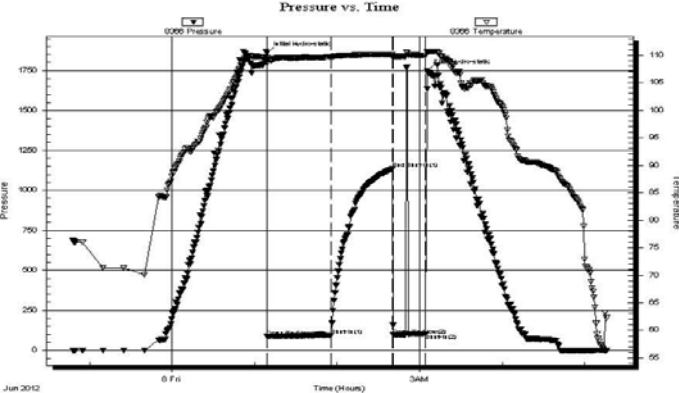
FORMATION	SAMPLE TOPS	LOG TOPS
Anhydrite	1563+ 667	1560+ 670
B-Anhydrite	1601+ 629	1595+ 635
Topeka	3267-1037	3262-1032
Heebner Shale	3496-1266	3491-1261
Toronto	3518-1288	3509-1279
LKC	3539-1309	3535-1305
BKC	3775-1545	3770-1540
Arbuckle	3850-1620	3853-1623
RTD	3899-1669	
LTD		3895-1665

- 6-02-12 RU, Spud, set surface casing to 213.65' w/150 sxs. Common, 2%gel, 3%CC, Slope survey 3/4 degree, WOC 8 hrs. Plug down 6:00PM.
- 6-03-12 545', drilling
- 6-04-12 2275', drilling
- 6-05-12 3090', drilling
- 6-06-12 3618', drilling, DST # 1, strap 3614.47 board 3620.22
- 6-07-12 3770', drilling, RTD 3899', logs
- 6-08-12 3899', DST #2 straddle test, DST #3 straddle test, P&A

DST # 1 CONVENTIONAL TEST

TRILOBITE TESTING, INC.		DRILL STEM TEST REPORT																																			
		TDI Inc. 24-12s-19w-Ellis 1610 Bison Road Hays, KS. 67601 ATTN: Herb Deines																																			
GENERAL INFORMATION: Formation: F Deviated: No Whipstock: 0.00 ft (KB) Time Tool Opened: 15:12:01 Time Test Ended: 17:52:01 Interval: 3600.00 ft (KB) To 3620.00 ft (KB) (TVD) Total Depth: 3620.00 ft (KB) (TVD) Hole Diameter: 7.80 inches Hole Condition: Good		Joy #1 Job Ticket: 47807 DST#: 1 Test Start: 2012.06.06 @ 12:53:31 Test Type: Conventional Bottom Hole (Initial) Tester: Jason McLemore Unit No: 54 Reference Elevations: 2230.00 ft (KB) 2222.00 ft (CF) KB to GR/CF: 8.00 ft																																			
Serial #: 8366 Inside Press@RunDepth: 16.24 psig @ 3601.00 ft (KB) Start Date: 2012.06.06 End Date: 2012.06.06 Start Time: 12:53:33 End Time: 17:52:01		Capacity: 8000.00 psig Last Calib.: 2012.06.06 Time On Btm: 2012.06.06 @ 15:11:46 Time Off Btm: 2012.06.06 @ 16:31:46																																			
TEST COMMENT: IFP-Dead, No Surge, Flush Tool, No Surge, Dead ISI-Dead FFP-Dead, Flush Tool, Two Bubbles, Dead, Pull Tool																																					
		PRESSURE SUMMARY <table border="1"> <thead> <tr> <th>Time (Min.)</th> <th>Pressure (psig)</th> <th>Temp (deg F)</th> <th>Annotation</th> </tr> </thead> <tbody> <tr> <td>0</td> <td>1770.76</td> <td>108.07</td> <td>Initial Hydro-static</td> </tr> <tr> <td>1</td> <td>15.81</td> <td>106.91</td> <td>Open To Flow (1)</td> </tr> <tr> <td>27</td> <td>16.24</td> <td>107.54</td> <td>Shut-In(1)</td> </tr> <tr> <td>55</td> <td>41.44</td> <td>107.73</td> <td>End Shut-In(1)</td> </tr> <tr> <td>55</td> <td>17.21</td> <td>107.72</td> <td>Open To Flow (2)</td> </tr> <tr> <td>80</td> <td>20.52</td> <td>107.99</td> <td>Shut-In(2)</td> </tr> <tr> <td>80</td> <td>1714.49</td> <td>109.11</td> <td>Final Hydro-static</td> </tr> </tbody> </table>		Time (Min.)	Pressure (psig)	Temp (deg F)	Annotation	0	1770.76	108.07	Initial Hydro-static	1	15.81	106.91	Open To Flow (1)	27	16.24	107.54	Shut-In(1)	55	41.44	107.73	End Shut-In(1)	55	17.21	107.72	Open To Flow (2)	80	20.52	107.99	Shut-In(2)	80	1714.49	109.11	Final Hydro-static		
Time (Min.)	Pressure (psig)	Temp (deg F)	Annotation																																		
0	1770.76	108.07	Initial Hydro-static																																		
1	15.81	106.91	Open To Flow (1)																																		
27	16.24	107.54	Shut-In(1)																																		
55	41.44	107.73	End Shut-In(1)																																		
55	17.21	107.72	Open To Flow (2)																																		
80	20.52	107.99	Shut-In(2)																																		
80	1714.49	109.11	Final Hydro-static																																		
Recovery <table border="1"> <thead> <tr> <th>Length (ft)</th> <th>Description</th> <th>Volume (bbl)</th> </tr> </thead> <tbody> <tr> <td>5.00</td> <td>OCM-15%O-85%M</td> <td>0.07</td> </tr> <tr> <td></td> <td></td> <td></td> </tr> <tr> <td></td> <td></td> <td></td> </tr> <tr> <td></td> <td></td> <td></td> </tr> <tr> <td></td> <td></td> <td></td> </tr> </tbody> </table>		Length (ft)	Description	Volume (bbl)	5.00	OCM-15%O-85%M	0.07													Gas Rates <table border="1"> <thead> <tr> <th></th> <th>Choke (inches)</th> <th>Pressure (psig)</th> <th>Gas Rate (Mcf/d)</th> </tr> </thead> <tbody> <tr> <td></td> <td></td> <td></td> <td></td> </tr> <tr> <td></td> <td></td> <td></td> <td></td> </tr> <tr> <td></td> <td></td> <td></td> <td></td> </tr> </tbody> </table>			Choke (inches)	Pressure (psig)	Gas Rate (Mcf/d)												
Length (ft)	Description	Volume (bbl)																																			
5.00	OCM-15%O-85%M	0.07																																			
	Choke (inches)	Pressure (psig)	Gas Rate (Mcf/d)																																		

DST # 2 STRADDLE TEST

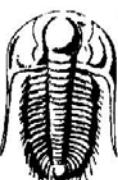
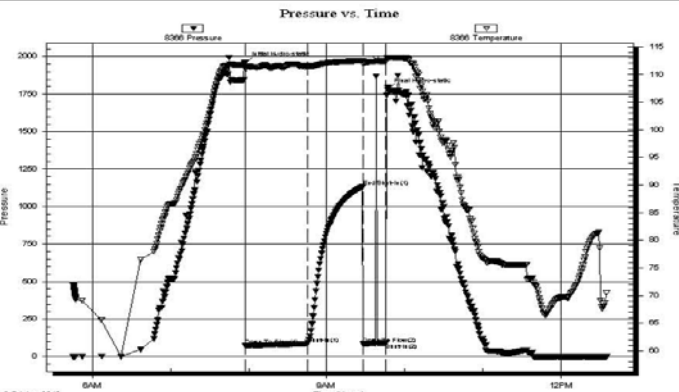
	TRILOBITE TESTING, INC.	DRILL STEM TEST REPORT																																										
	TDI Inc. 1610 Bison Road Hays, KS. 67601 ATTN: Herb Deines	24-12s-19w-Ellis Joy #1 Job Ticket: 47808 DST#: 2 Test Start: 2012.06.07 @ 22:48:00																																										
GENERAL INFORMATION: Formation: Toronto-F Deviated: No Whipstock: 0.00 ft (KB) Time Tool Opened: 01:09:15 Time Test Ended: 05:16:15 Test Type: Conventional Straddle (Reset) Tester: Jason McLemore Unit No: 54 Interval: 3483.00 ft (KB) To 3625.00 ft (KB) (TVD) Total Depth: 3895.00 ft (KB) (TVD) Hole Diameter: 7.80 inches Hole Condition: Good Reference Elevations: 2230.00 ft (KB) 2222.00 ft (CF) KB to GR/CF: 8.00 ft																																												
Serial #: 8366 Inside Press@RunDepth: 92.55 psig @ 3613.00 ft (KB) Capacity: 8000.00 psig Start Date: 2012.06.07 End Date: 2012.06.08 Last Calib.: 2012.06.08 Start Time: 22:48:02 End Time: 05:16:15 Time On Btm: 2012.06.08 @ 01:09:00 Time Off Btm: 2012.06.08 @ 03:05:30																																												
TEST COMMENT: IFF-Weak Blow, Built to 2" ISI-Dead FFP-Dead, Flush Tool, Surge, Then Dead, Pull Tool																																												
	<table border="1" style="width:100%; border-collapse: collapse;"> <thead> <tr> <th colspan="4" style="text-align: center;">PRESSURE SUMMARY</th> </tr> <tr> <th>Time (Min.)</th> <th>Pressure (psig)</th> <th>Temp (deg F)</th> <th>Annotation</th> </tr> </thead> <tbody> <tr><td>0</td><td>1861.70</td><td>109.51</td><td>Initial Hydro-static</td></tr> <tr><td>1</td><td>85.83</td><td>108.60</td><td>Open To Flow (1)</td></tr> <tr><td>47</td><td>92.55</td><td>109.68</td><td>Shut-In(1)</td></tr> <tr><td>92</td><td>1135.55</td><td>110.14</td><td>End Shut-In(1)</td></tr> <tr><td>92</td><td>95.35</td><td>109.75</td><td>Open To Flow (2)</td></tr> <tr><td>116</td><td>103.42</td><td>110.00</td><td>Shut-In(2)</td></tr> <tr><td>117</td><td>1750.25</td><td>110.62</td><td>Final Hydro-static</td></tr> </tbody> </table>			PRESSURE SUMMARY				Time (Min.)	Pressure (psig)	Temp (deg F)	Annotation	0	1861.70	109.51	Initial Hydro-static	1	85.83	108.60	Open To Flow (1)	47	92.55	109.68	Shut-In(1)	92	1135.55	110.14	End Shut-In(1)	92	95.35	109.75	Open To Flow (2)	116	103.42	110.00	Shut-In(2)	117	1750.25	110.62	Final Hydro-static					
PRESSURE SUMMARY																																												
Time (Min.)	Pressure (psig)	Temp (deg F)	Annotation																																									
0	1861.70	109.51	Initial Hydro-static																																									
1	85.83	108.60	Open To Flow (1)																																									
47	92.55	109.68	Shut-In(1)																																									
92	1135.55	110.14	End Shut-In(1)																																									
92	95.35	109.75	Open To Flow (2)																																									
116	103.42	110.00	Shut-In(2)																																									
117	1750.25	110.62	Final Hydro-static																																									
<table border="1" style="width:100%; border-collapse: collapse;"> <thead> <tr> <th colspan="3" style="text-align: center;">Recovery</th> </tr> <tr> <th>Length (ft)</th> <th>Description</th> <th>Volume (bbl)</th> </tr> </thead> <tbody> <tr> <td>38.00</td> <td>Drilling Mud</td> <td>0.53</td> </tr> <tr><td> </td><td> </td><td> </td></tr> <tr><td> </td><td> </td><td> </td></tr> <tr><td> </td><td> </td><td> </td></tr> <tr><td> </td><td> </td><td> </td></tr> </tbody> </table>	Recovery			Length (ft)	Description	Volume (bbl)	38.00	Drilling Mud	0.53													<table border="1" style="width:100%; border-collapse: collapse;"> <thead> <tr> <th colspan="4" style="text-align: center;">Gas Rates</th> </tr> <tr> <th> </th> <th>Choke (inches)</th> <th>Pressure (psig)</th> <th>Gas Rate (Mcf/d)</th> </tr> </thead> <tbody> <tr><td> </td><td> </td><td> </td><td> </td></tr> <tr><td> </td><td> </td><td> </td><td> </td></tr> <tr><td> </td><td> </td><td> </td><td> </td></tr> </tbody> </table>			Gas Rates					Choke (inches)	Pressure (psig)	Gas Rate (Mcf/d)												
Recovery																																												
Length (ft)	Description	Volume (bbl)																																										
38.00	Drilling Mud	0.53																																										
Gas Rates																																												
	Choke (inches)	Pressure (psig)	Gas Rate (Mcf/d)																																									

Trilobite Testing, Inc

Ref. No: 47808

Printed: 2012.06.08 @ 13:44:30

DST # 3 STRADDLE TEST

	TRILOBITE TESTING, INC.	DRILL STEM TEST REPORT																																							
	TDI Inc. 1610 Bison Road Hays, KS. 67601 ATTN: Herb Deines	24-12s-19w-Ellis Joy #1 Job Ticket: 47809 DST#: 3 Test Start: 2012.06.08 @ 05:44:56																																							
GENERAL INFORMATION: Formation: H-I-J-K Deviated: No Whipstock: 0.00 ft (KB) Time Tool Opened: 07:57:41 Time Test Ended: 12:35:11 Test Type: Conventional Straddle (Reset) Tester: Jason McLemore Unit No: 54 Interval: 3644.00 ft (KB) To 3764.00 ft (KB) (TVD) Total Depth: 3895.00 ft (KB) (TVD) Hole Diameter: 7.80 inches Hole Condition: Good Reference Elevations: 2230.00 ft (KB) 2222.00 ft (CF) KB to GR/CF: 8.00 ft																																									
Serial #: 8366 Inside Press@RunDepth: 84.33 psig @ 3741.00 ft (KB) Capacity: 8000.00 psig Start Date: 2012.06.08 End Date: 2012.06.08 Last Calib.: 2012.06.08 Start Time: 05:44:58 End Time: 12:35:11 Time On Btm: 2012.06.08 @ 07:57:26 Time Off Btm: 2012.06.08 @ 09:46:41																																									
TEST COMMENT: IFF-Weak Blow, Built to 1-3/4" ISI-Dead FFP-Dead, Flush Tool, Surge Then Ded Off to Weak Plugging Action, Pull Tool																																									
	<table border="1" style="width:100%; border-collapse: collapse;"> <thead> <tr> <th colspan="4" style="text-align: center;">PRESSURE SUMMARY</th> </tr> <tr> <th>Time (Min.)</th> <th>Pressure (psig)</th> <th>Temp (deg F)</th> <th>Annotation</th> </tr> </thead> <tbody> <tr><td>0</td><td>1956.15</td><td>112.06</td><td>Initial Hydro-static</td></tr> <tr><td>1</td><td>71.50</td><td>110.99</td><td>Open To Flow (1)</td></tr> <tr><td>48</td><td>84.33</td><td>111.53</td><td>Shut-In(1)</td></tr> <tr><td>91</td><td>1133.23</td><td>112.48</td><td>End Shut-In(1)</td></tr> <tr><td>91</td><td>84.85</td><td>111.86</td><td>Open To Flow (2)</td></tr> <tr><td>109</td><td>91.98</td><td>112.38</td><td>Shut-In(2)</td></tr> <tr><td>110</td><td>1782.02</td><td>112.97</td><td>Final Hydro-static</td></tr> </tbody> </table>			PRESSURE SUMMARY				Time (Min.)	Pressure (psig)	Temp (deg F)	Annotation	0	1956.15	112.06	Initial Hydro-static	1	71.50	110.99	Open To Flow (1)	48	84.33	111.53	Shut-In(1)	91	1133.23	112.48	End Shut-In(1)	91	84.85	111.86	Open To Flow (2)	109	91.98	112.38	Shut-In(2)	110	1782.02	112.97	Final Hydro-static		
PRESSURE SUMMARY																																									
Time (Min.)	Pressure (psig)	Temp (deg F)	Annotation																																						
0	1956.15	112.06	Initial Hydro-static																																						
1	71.50	110.99	Open To Flow (1)																																						
48	84.33	111.53	Shut-In(1)																																						
91	1133.23	112.48	End Shut-In(1)																																						
91	84.85	111.86	Open To Flow (2)																																						
109	91.98	112.38	Shut-In(2)																																						
110	1782.02	112.97	Final Hydro-static																																						
<table border="1" style="width:100%; border-collapse: collapse;"> <thead> <tr> <th colspan="3" style="text-align: center;">Recovery</th> </tr> <tr> <th>Length (ft)</th> <th>Description</th> <th>Volume (bbl)</th> </tr> </thead> <tbody> <tr> <td>35.00</td> <td>Drilling Mud</td> <td>0.49</td> </tr> <tr><td> </td><td> </td><td> </td></tr> <tr><td> </td><td> </td><td> </td></tr> <tr><td> </td><td> </td><td> </td></tr> </tbody> </table>	Recovery			Length (ft)	Description	Volume (bbl)	35.00	Drilling Mud	0.49										<table border="1" style="width:100%; border-collapse: collapse;"> <thead> <tr> <th colspan="4" style="text-align: center;">Gas Rates</th> </tr> <tr> <th> </th> <th>Choke (inches)</th> <th>Pressure (psig)</th> <th>Gas Rate (Mcf/d)</th> </tr> </thead> <tbody> <tr><td> </td><td> </td><td> </td><td> </td></tr> <tr><td> </td><td> </td><td> </td><td> </td></tr> <tr><td> </td><td> </td><td> </td><td> </td></tr> </tbody> </table>			Gas Rates					Choke (inches)	Pressure (psig)	Gas Rate (Mcf/d)												
Recovery																																									
Length (ft)	Description	Volume (bbl)																																							
35.00	Drilling Mud	0.49																																							
Gas Rates																																									
	Choke (inches)	Pressure (psig)	Gas Rate (Mcf/d)																																						

* Recovery from multiple tests

Trilobite Testing, Inc

Ref. No: 47809

Printed: 2012.06.08 @ 13:43:39

ROCK TYPES

Cht vari	Lmst fw<7	Lscongl	Carbon Sh	Shgy
Dolprim	Lmst fw7>	shale, grn	shale, red	

ACCESSORIES

MINERAL	FOSSIL
P Pyrite	φ Oolite
△ Varicolored chert	
△ Chert White	

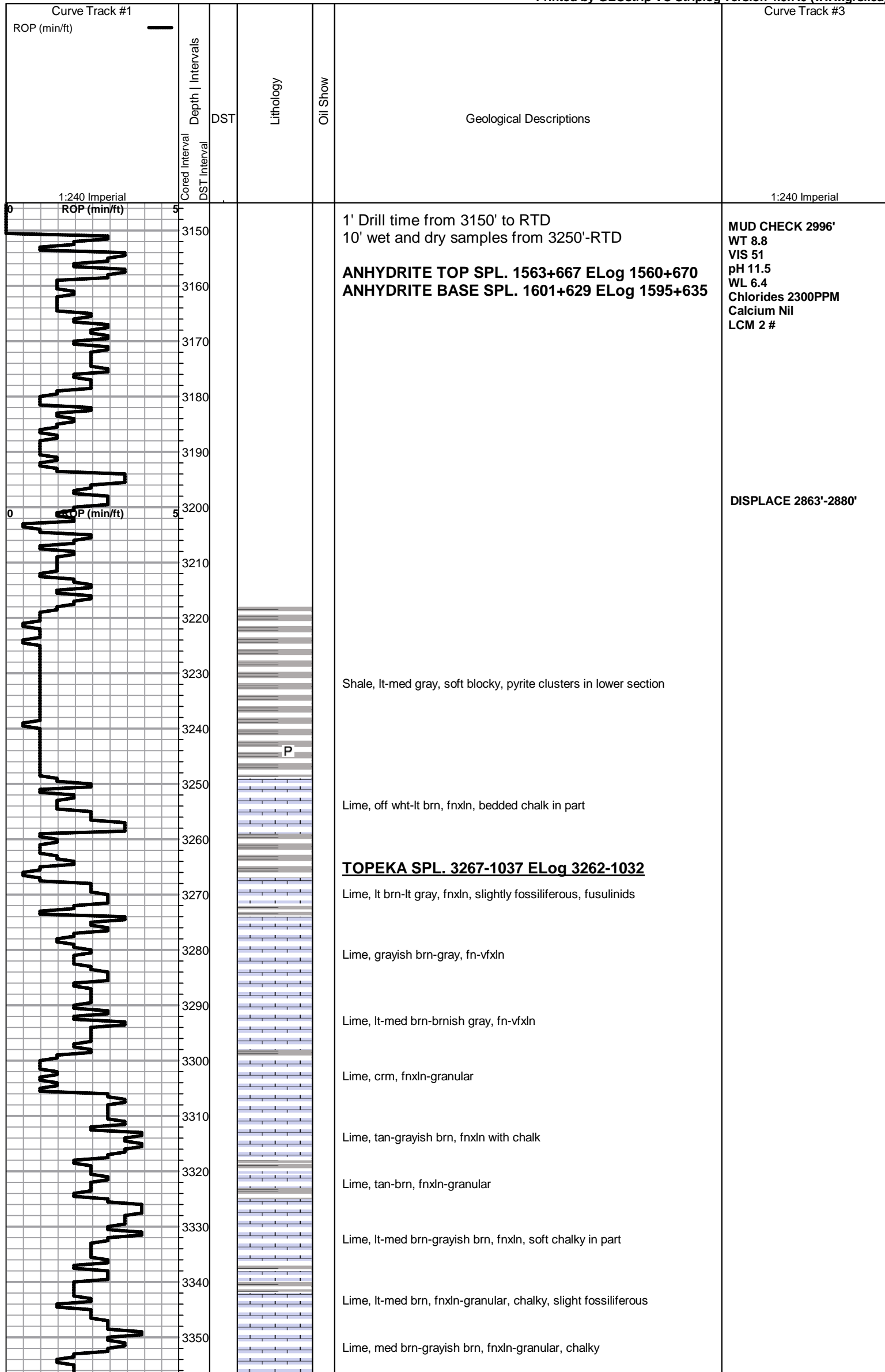
OTHER SYMBOLS

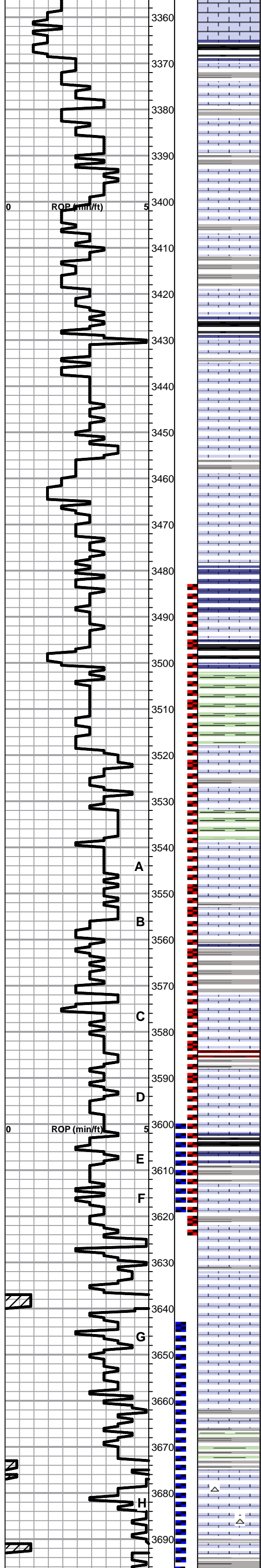
DST

DST Int

DST alt

Printed by GEOstrip VC Striplog version 4.0.7.0 (www.grsi.ca)





Lime, offwht-med brn, granular, chalky, NS

Shale, gray-black carbonaceous

Lime, wht-crm, fnxln-lithographic, bedded chalk in part

Lime, wht-crm, fnxln-lithographic, bedded chalk in part

Lime, offwht-crm, lithographic, slight chalk in part

Lime, crm, fn-vfxln

Shale, med gray, calcareous with fossil fragments in part

Lime, offwht-crm, fnxln, slight chalk in part

Shale, gray-black carbonaceous

Lime, lt-med brn, fnxln, chalky in part, slightly fossiliferous

Lime, lt-med brn, fn-vfxln

Shale, gray, blocky with black chert, fresh, sharp

Lime, lt-dark brn, fnxln-granular, chalk in part

Lime, med-dark brn, fnxln

Lime, med-dark brn, fnxln, trashy, shaley mix in part

HEEBNER SHALE SPL. 3496-1266 ELog 3491-1261

Shale, black carbonaceous
Lime, med brn, fnxln

Shale, lt gray-lime green, forming soft mud balls in part

TORONTO SPL. 3518-1288 ELog 3509-1279

Lime, crm, fnxln, chalky, NS

Lime, crm, vfxln, slight chalk, NS

LKC SPL. 3539-1309 ELog 3535-1305

Lime, lt brn, fn-vfxln, two pieces with oil stained fracture surfaces

Lime, lt brn, fn-vfxln, chalky, NS

Shale, lt-med gray, soft blocky

Lime, crm-tan, fnxln, chalky in part, scattered spotty stain with heavy oil in scatterd vuggy porosity, No Odor

Shale, gray, soft with lt red wash in part

Lime, off wht-lt brn, fn-vfxln, slightly chalky in part, NS

Shale, black carbonaceous
Lime, lt gray, fnxln

Lime, lt brn, fossil fragments, scattered to saturated staining, SFO with light odor

Lime, offwht-lt brn, fn-vfxln

Lime, crm-lt brn, fn-vfxln, chalk in part

Lime, crm-lt brn, fn-vfxln, chalk in part

Lime, tan-brn-gray, fnxln, slightly chalky

Shale, gray-black carbonaceous
Lime, brn-gray, fnxln, trashy in appearance

Lime, offwht-lt brn, fn-vfxln,

Lime, crm-lt brn, fn-vfxln, slight chalk in part

Shale, gray-gravish green, soft blocky

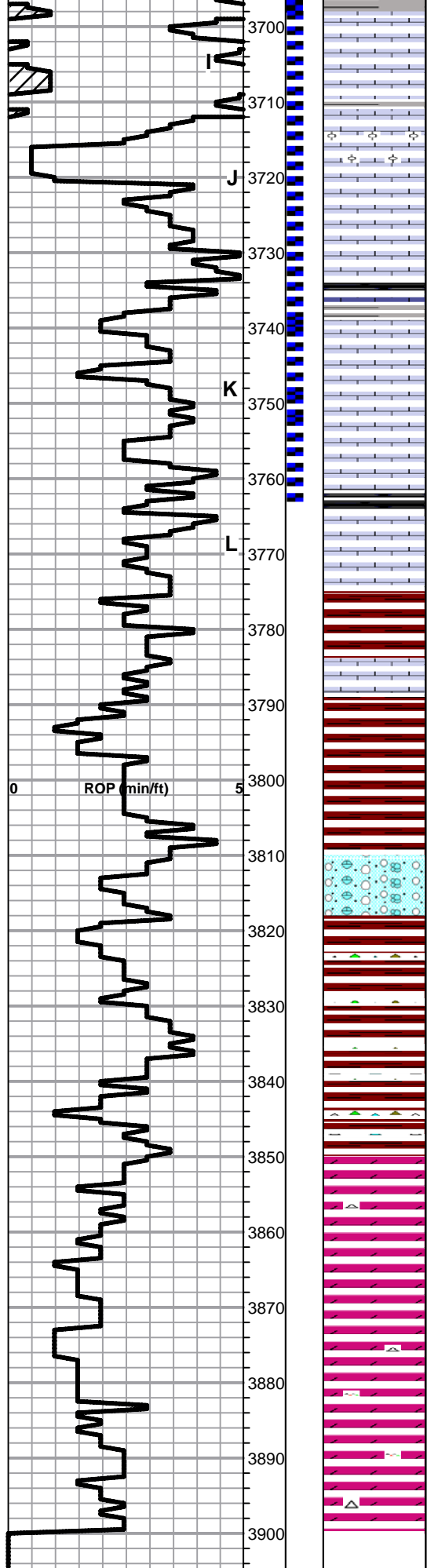
DST #2 STRADDLE TEST
3483'-3625'
SEE HEADER FOR TEST SUMMARY

MUD CHECK 3590'
WT 9.2
VIS 56
pH 10.5
WL 6.8
Chlorides 2300 PPM
Calcium Trace
LCM 2 #

Pipe strap 3614.47
Board 3620.22
5.85

DST # 1 3600'-3620'
SEE HEADER FOR TEST DETAILS

DST #3 STRADDLE TEST
3644'-3764'
SEE HEADER FOR TEST RESULTS



Shale, gray, grayish green, conchoidal

Lime, crm, cryptocrystalline, very clean appearance

Lime, crm, fnxln-cryptocrystalline, slightly chalky

Lime, crm-lt brn, oomoldic, NS, no wet cut

Lime, crm, fnxln, chalk in part

Shale, dove gray, forming soft mud balls

Lime, wht-crm, mostly fnxln, chalky, few chips with med granular, lime with VMSFO on break, No Odor

Lime, crm, fn-vfxln, bedded chalk

Shale, gray-black carbonaceous

Lime, crm-lt gray, fnxln, chalk in part

BKC SPL. 3755-1545 ELog 3770-1540

Shale, reddish brn, soft blocky

Lime, lt gray, fnxln

Shale, green, gray, red, brn, soft blocky

Shale, reddish brn-brn, grayish green, maroon, soft blocky

Lime, crm, reworked, fnxln with scattered specks of glauconite

Shale, reddish brn with vari color cherts in part

Shale, mostly reddish brn with scattered vari colored chert

ARBUCKLE SPL. 3850--1620 ELog 3853-1623

Dolomite, crm-lt brn, fnxln with fn-med sucrosic in partm NS

Dolomite, crm-lt brn, fnxln with scattered fn-med sucrosic, NS

Dolomite, crm, fnxln, chert, crm, orange, sharp, fresh

Dolomite, crm-lt brn, fnxln, tan-lt brn fresh, sharp cherts.

MUD CHECK 3730'
 WT 9.3
 VIS 55
 pH 10.5
 WL 6.8
 Chlorides 2200 ppm
 Calcium Trace
 LCM 1 #

MUD CHECK 3899'
 WT 9.3
 VIS 55
 pH 10.0
 WL 7.2
 Chlorides 2500 ppm
 Calcium Trace
 LCM 1#

Slope 3/4 degree

ALLIED OIL & GAS SERVICES, LLC 056419

Federal Tax I.D.# 20-5975804

MAIL TO P.O. BOX 31
RUSSELL, KANSAS 67665

SERVICE POINT:
Russell Ks

DATE <i>6-2-12</i>	SEC. <i>24</i>	TWP. <i>12 S</i>	RANGE <i>19 W</i>	CALLED OUT	ON LOCATION	JOB START <i>8:30 AM</i>	JOB FINISH <i>6:00 PM</i>
LEASE <i>Joy</i>	WELL # <i>#1</i>	LOCATION <i>Hay's Ks. 2x 3 1/2 W 1/4 S</i>			COUNTY <i>Ellis</i>	STATE <i>Kansas</i>	
OLD OR (NEW) (Circle one)							

CONTRACTOR *Southwind Drilling Rig #1*

TYPE OF JOB *Cement Surface*

HOLE SIZE *12 1/4* T.D. *213'*

CASING SIZE *8 5/8* New DEPTH *213'*

TUBING SIZE # csg. DEPTH

DRILL PIPE DEPTH

TOOL DEPTH

PRES. MAX *250 #* MINIMUM

MEAS. LINE SHOE JOINT

CEMENT LEFT IN CSG. *15'*

PERFS.

DISPLACEMENT *12 3/4 BBL*

EQUIPMENT

PUMP TRUCK CEMENTER *Alford G.*

417 HELPER *Woody O.*

BULK TRUCK

481 DRIVER *Body H.*

BULK TRUCK

DRIVER

REMARKS:

Ran 5 New Joints of 20 # 8 5/8 csg.

Set @ 213' Received Circulation

+ Cement of 150 sx Comm 2 1/2 gel &

3 1/2 cc's Displaced 12 3/4 BBL Return

Cement, + Shut in @ 250 #

Cement Did Circulate to Surface

Blank's

CHARGE TO: *T. Drake INC.*

STREET _____

CITY _____ STATE _____ ZIP _____

To: Allied Oil & Gas Services, LLC.

You are hereby requested to rent cementing equipment and furnish cementer and helper(s) to assist owner or contractor to do work as is listed. The above work was done to satisfaction and supervision of owner agent or contractor. I have read and understand the "GENERAL TERMS AND CONDITIONS" listed on the reverse side.

PRINTED NAME *Derby Keever*

SIGNATURE *Derby Keever*

OWNER _____

CEMENT AMOUNT ORDERED *150 sx Comm*

3 1/2 cc

2 1/2 Gel

COMMON	<i>150 sx</i>	@ <i>16.25</i>	<i>2437.50</i>
POZMIX		@	
GEL	<i>3 sx</i>	@ <i>21.25</i>	<i>63.75</i>
CHLORIDE	<i>5 sx</i>	@ <i>58.20</i>	<i>291.00</i>
ASC		@	
		@	
		@	
		@	
		@	
		@	
HANDLING	<i>158 Total sx</i>	@ <i>2.25</i>	<i>355.50</i>
MILEAGE	<i>40 Ten mile</i>		<i>695.20</i>
	<i>6320'</i>	TOTAL	<i>3842.95</i>

SERVICE

DEPTH OF JOB	<i>213</i>		
PUMP TRUCK CHARGE			<i>1125.00</i>
EXTRA FOOTAGE		@	
MILEAGE 40 HV.ME.		@ <i>7.00</i>	<i>280.00</i>
MANIFOLD		@	
<i>40 HV.ME.</i>		@ <i>4.00</i>	<i>160.00</i>
		@	
TOTAL			<i>1565.00</i>

PLUG & FLOAT EQUIPMENT

	@	
	@	
	@	
	@	
	@	
TOTAL		<i>0</i>

SALES TAX (If Any) *175.91*

TOTAL CHARGES *5407.95*

DISCOUNT *20/50* *1422.15* IF PAID IN 30 DAYS

BS

6-4-12

ALLIED OIL & GAS SERVICES, LLC 056421

Federal Tax I.D.# 20-5975804

REMIT TO P.O. BOX 31
RUSSELL, KANSAS 67665

SERVICE POINT:
Russell, Ka.

DATE <u>6-8-12</u>	SEC. <u>24</u>	TWP. <u>12 S</u>	RANGE <u>19 W</u>	CALLED OUT	ON LOCATION	JOB START <u>6:30 PM</u>	JOB FINISH <u>7:00 PM</u>
LEASE <u>Joy</u>	WELL # <u>1</u>	LOCATION <u>Hay's Ka. 7 N 3 1/2 W 1/4 S</u>			COUNTY <u>Fillis</u>	STATE <u>KANSAS</u>	
OLD OR NEW (Circle one)							

CONTRACTOR Southwind Data, Rig #1

TYPE OF JOB Rotary Plug

HOLE SIZE 7 7/8 R.T.B. 3899'

CASING SIZE 8.575" Surface DEPTH

TUBING SIZE DEPTH

DRILL PIPE 4 1/2 X-H DEPTH 3833'

TOOL DEPTH

PRES. MAX MINIMUM

MEAS. LINE SHOE JOINT

CEMENT LEFT IN CSG.

PERFS.

DISPLACEMENT

EQUIPMENT

PUMP TRUCK CEMENTER Glenn G.

409 HELPER Tony P.

BULK TRUCK 92

481 DRIVER Robert Y.

BULK TRUCK

DRIVER

REMARKS:

2.5" SX @ 3833'

2.5" SX @ 1575'

100 SX @ 875'

40 SX @ 275'

10 SX @ 40' + wiper - Plug

30 SX @ Rathole

15 SX @ Mouse Hole

Thank's

CHARGE TO: T.D.T. Inc.

STREET

CITY STATE ZIP

To: Allied Oil & Gas Services, LLC.
You are hereby requested to rent cementing equipment and furnish cementer and helper(s) to assist owner or contractor to do work as is listed. The above work was done to satisfaction and supervision of owner agent or contractor. I have read and understand the "GENERAL TERMS AND CONDITIONS" listed on the reverse side.

PRINTED NAME Derby Keener

SIGNATURE Derby Keener

OWNER

CEMENT

AMOUNT ORDERED 245 sx @ 40 4% GEL
1/4" # F10-Seal Per SX

COMMON 147 SX @ 16.25 2388.75

POZMIX 98 SX @ 8.50 833.00

GEL 10 SX @ 21.25 212.50

CHLORIDE @

ASC @

F10-Seal 3 SX @ 75 225.00

HANDLING 255 TOTAL SX @ 2.25 573.75

MILEAGE 40 Ton Mile 112.20

10,200 TOTAL 5332.50

SERVICE

DEPTH OF JOB 3833'

PUMP TRUCK CHARGE 1250

EXTRA FOOTAGE @

MILEAGE 40 HV MI @ 7.00 280.00

MANIFOLD @

40 LV MI @ 4.00 160.00

TOTAL 1690.00

PLUG & FLOAT EQUIPMENT

1 - 8 5/8 wiper Plug @ 64.00

TOTAL 64

SALES TAX (If Any) 446.44

TOTAL CHARGES 2006.50

DISCOUNT 20/10 1885.90 IF PAID IN 30 DAYS

net 5200.60

BS 6-10