

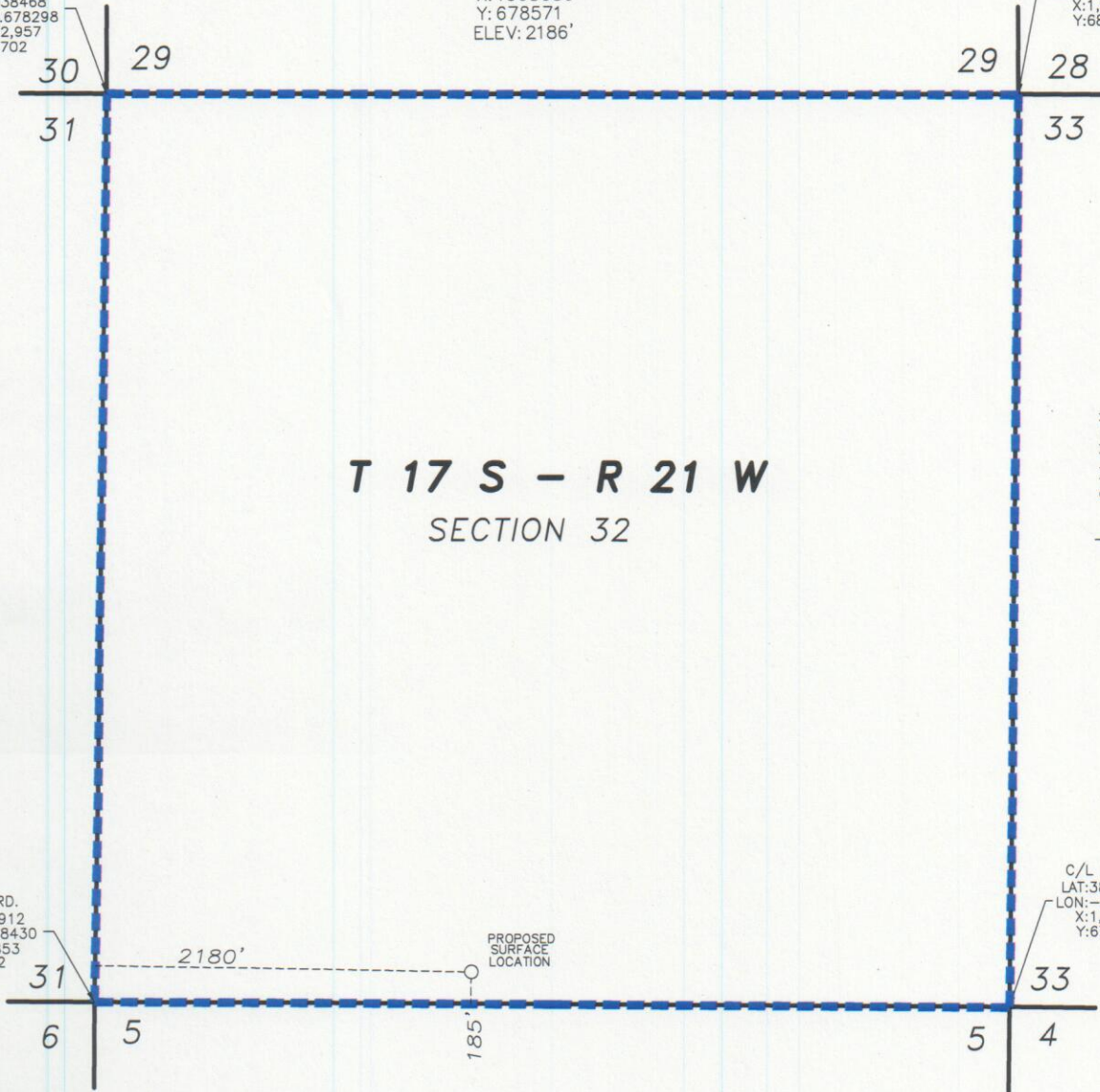
THIS DRAWING DOES NOT REPRESENT A BOUNDARY SURVEY, DISTANCES, COORDINATES AND BEARINGS SHOWN ARE NOT INTENDED TO BE DEFINITIVE IN ESTABLISHING ACTUAL TITLE BOUNDRIES. THIS DWAWING IS FOR CONSTRUCTION PURPOSES ONLY.

All Bearings, Distances, and Coordinates shown hereon are based on the Kansas State Plane Coordinate System, N.A.D. 27 Datum, South Zone.

PROPOSED
SURFACE LOCATION
2180' FWL & 185' FSL
OF SECTION 32
LAT: 38.524452
LON: -99.670805
X: 1665036
Y: 678571
ELEV: 2186'

C/L INT. RD.
LAT: 38.538536
LON: -99.659828
X: 1,668,240
Y: 683,661

C/L INT. RD.
LAT: 38.538468
LON: -99.678298
X: 1,662,957
Y: 683,702



T 17 S - R 21 W
SECTION 32



----- = UNIT LINE

FINAL COPY

PROPOSED WELL LOCATION
ENCANA OIL & GAS (USA) INC.
CASEY 32V-1 SWD
NESS COUNTY, KANSAS
SCALE: 1" = 1000'