

THIS DRAWING DOES NOT REPRESENT A BOUNDARY SURVEY, DISTANCES, COORDINATES AND BEARINGS SHOWN ARE NOT INTENDED TO BE DEFINITIVE IN ESTABLISHING ACTUAL TITLE BOUNDRIES. THIS DWAWING IS FOR CONSTRUCTION PURPOSES ONLY.

All Bearings, Distances, and Coordinates shown hereon are based on the Kansas State Plane Coordinate System, N.A.D. 27 Datum, South Zone.

PROPOSED SURFACE LOCATION
 2120' FWL & 185' FSL
 OF SECTION 32
 LAT: 38.524450
 LON: -99.671015
 X: 1664976
 Y: 678571
 ELEV: 2187'

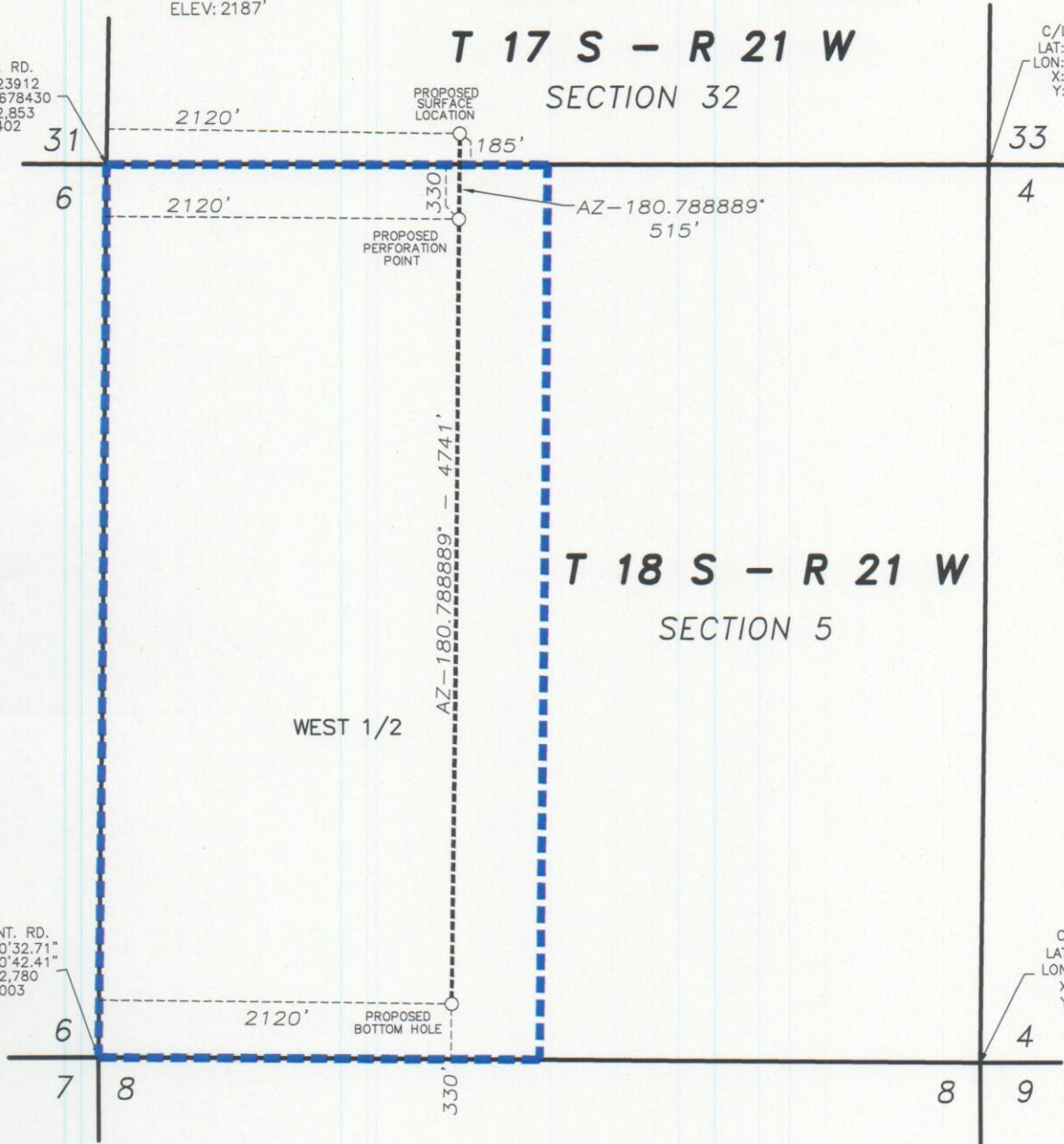
PROPOSED PERFORATION POINT
 2120' FWL & 330' FNL
 OF SECTION 5
 LAT: 38.523038
 LON: -99.671017
 X: 1664969
 Y: 678057

PROPOSED BOTTOM HOLE
 2120' FWL & 330' FSL
 OF SECTION 5
 LAT: 38.510018
 LON: -99.671037
 X: 1664904
 Y: 673316

T 17 S - R 21 W
SECTION 32

C/L INT. RD.
 LAT: 38.523992
 LON: -99.659894
 X: 1,668,156
 Y: 678,365

C/L INT. RD.
 LAT: 38.523912
 LON: -99.678430
 X: 1,662,853
 Y: 678,402



PROPOSED WELL LOCATION
ENCANA OIL & GAS (USA) INC.
CASEY 5H-1
NESS COUNTY, KANSAS
SCALE: 1" = 1000'

--- = UNIT LINE

FINAL COPY

REV: 6-19-2012
 6-5-2012

T120256-5H-1-R