



DRILL STEM TEST REPORT

Prepared For: **Chieftain Oil Co.Inc.**

PO Box 124
Kiowa KS 67070

ATTN: David Barker

Millie A#1

15-35s-11w Barber,KS

Start Date: 2012.01.17 @ 00:19:35

End Date: 2012.01.17 @ 08:48:35

Job Ticket #: 44100 DST #: 1

Trilobite Testing, Inc
PO Box 362 Hays, KS 67601
ph: 785-625-4778 fax: 785-625-5620

Printed: 2012.01.25 @ 14:06:36



TRILOBITE TESTING, INC.

DRILL STEM TEST REPORT

Chieftain Oil Co. Inc.

15-35s-11w Barber, KS

PO Box 124
Kiowa KS 67070

Millie A#1

Job Ticket: 44100

DST#: 1

ATTN: David Barker

Test Start: 2012.01.17 @ 00:19:35

GENERAL INFORMATION:

Formation: **Misener**

Deviated: No Whipstock: ft (KB)

Time Tool Opened: 02:24:20

Time Test Ended: 08:48:35

Test Type: Conventional Bottom Hole (Initial)

Tester: Gary Pevoteaux

Unit No: 56

Interval: 5056.00 ft (KB) To 5191.00 ft (KB) (TVD)

Reference Elevations: 1418.00 ft (KB)

Total Depth: 5191.00 ft (KB) (TVD)

1410.00 ft (CF)

Hole Diameter: 7.88 inches Hole Condition: Poor

KB to GR/CF: 8.00 ft

Serial #: 8167 Inside

Press @ Run Depth: 40.26 psig @ 5057.00 ft (KB)

Capacity: 8000.00 psig

Start Date: 2012.01.17

End Date:

2012.01.17

Last Calib.:

2012.01.17

Start Time: 00:19:36

End Time:

08:48:35

Time On Btm:

2012.01.17 @ 02:22:50

Time Off Btm:

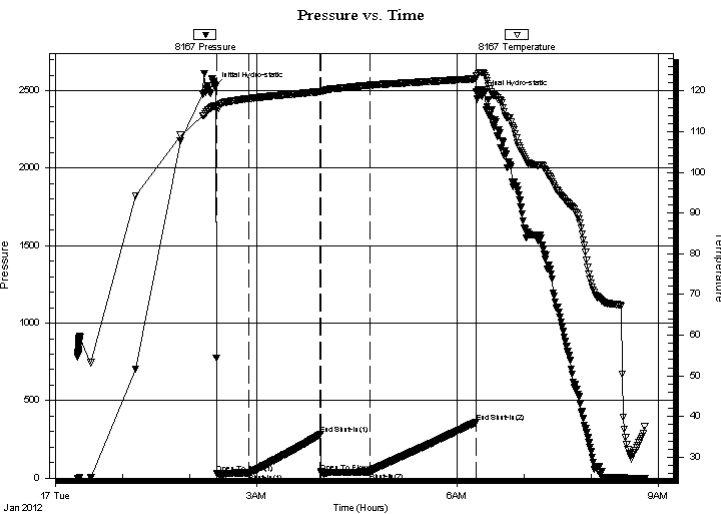
2012.01.17 @ 06:20:20

TEST COMMENT: IF: Fair blow . Increase to 10".

IS: No blow .

FF: Fair blow . 4 - 13".

FS: No blow .



PRESSURE SUMMARY

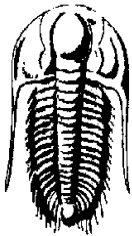
Time (Min.)	Pressure (psig)	Temp (deg F)	Annotation
0	2529.68	116.36	Initial Hydro-static
2	31.01	115.89	Open To Flow (1)
31	30.19	118.15	Shut-In(1)
95	282.14	119.81	End Shut-In(1)
95	35.87	119.77	Open To Flow (2)
139	40.26	121.39	Shut-In(2)
234	361.19	122.99	End Shut-In(2)
238	2476.05	124.46	Final Hydro-static

Recovery

Length (ft)	Description	Volume (bbl)
50.00	Drig. mud	0.25
0.00	390 ft. of GIP	0.00

Gas Rates

	Choke (inches)	Pressure (psig)	Gas Rate (Mcf/d)



**TRILOBITE
TESTING, INC.**

DRILL STEM TEST REPORT

Chieftain Oil Co.Inc.

15-35s-11w Barber,KS

PO Box 124
Kiowa KS 67070

Millie A#1

ATTN: David Barker

Job Ticket: 44100 **DST#: 1**
Test Start: 2012.01.17 @ 00:19:35

GENERAL INFORMATION:

Formation: **Misener**

Deviated: No Whipstock: ft (KB)

Time Tool Opened: 02:24:20

Time Test Ended: 08:48:35

Interval: 5056.00 ft (KB) To 5191.00 ft (KB) (TVD)

Total Depth: 5191.00 ft (KB) (TVD)

Hole Diameter: 7.88 inches Hole Condition: Poor

Test Type: Conventional Bottom Hole (Initial)

Tester: Gary Pevoteaux

Unit No: 56

Reference Elevations: 1418.00 ft (KB)

1410.00 ft (CF)

KB to GR/CF: 8.00 ft

Serial #: 8370 Outside

Press@RunDepth: psig @ 5057.00 ft (KB)

Start Date: 2012.01.17

End Date: 2012.01.17

Capacity: 8000.00 psig

Last Calib.: 2012.01.17

Start Time: 00:12:33

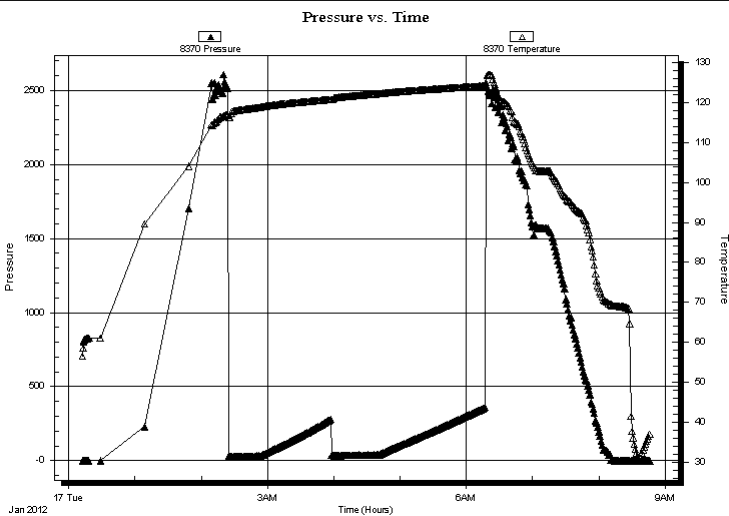
End Time: 08:46:28

Time On Btm:

Time Off Btm:

TEST COMMENT: IF:Fair blow . Increase to 10".
IS:No blow .
FF:Fair blow . 4 -13".
FS:No blow .

PRESSURE SUMMARY



Time (Min.)	Pressure (psig)	Temp (deg F)	Annotation

Recovery

Length (ft)	Description	Volume (bbl)
50.00	Drig.mud	0.25
0.00	390 ft.of GIP	0.00

Gas Rates

	Choke (inches)	Pressure (psig)	Gas Rate (Mcf/d)



**TRILOBITE
TESTING, INC.**

DRILL STEM TEST REPORT

TOOL DIAGRAM

Chieftain Oil Co. Inc.

15-35s-11w Barber, KS

PO Box 124
Kiowa KS 67070

Millie A#1

Job Ticket: 44100

DST#: 1

ATTN: David Barker

Test Start: 2012.01.17 @ 00:19:35

Tool Information

Drill Pipe:	Length: 4921.00 ft	Diameter: 3.80 inches	Volume: 69.03 bbl	Tool Weight: 2400.00 lb
Heavy Wt. Pipe:	Length: 0.00 ft	Diameter: 0.00 inches	Volume: 0.00 bbl	Weight set on Packer: 24000.00 lb
Drill Collar:	Length: 124.00 ft	Diameter: 2.25 inches	Volume: 0.61 bbl	Weight to Pull Loose: 104000.0 lb
			<u>Total Volume: 69.64 bbl</u>	Tool Chased 2.00 ft
Drill Pipe Above KB:	17.00 ft			String Weight: Initial 70000.00 lb
Depth to Top Packer:	5056.00 ft			Final 72000.00 lb
Depth to Bottom Packer:	ft			
Interval between Packers:	135.00 ft			
Tool Length:	163.00 ft			
Number of Packers:	2	Diameter: 6.75 inches		

Tool Comments:

Tool Description

Tool Description	Length (ft)	Serial No.	Position	Depth (ft)	Accum. Lengths
C.O. Sub	1.00			5029.00	
Shut in tool	5.00			5034.00	
HMV	5.00			5039.00	
Jars	5.00			5044.00	
Safety Joint	3.00			5047.00	
Packer	4.00			5051.00	28.00 Bottom Of Top Packer
Packer	5.00			5056.00	
Stubb	1.00			5057.00	
Recorder	0.00	8167	Inside	5057.00	
Recorder	0.00	8370	Outside	5057.00	
Perforations	7.00			5064.00	
Blank Spacing	122.00			5186.00	
Bullnose	5.00			5191.00	135.00 Bottom Packers & Anchor

Total Tool Length: 163.00



**TRILOBITE
TESTING, INC.**

DRILL STEM TEST REPORT

FLUID SUMMARY

Chieftain Oil Co.Inc.

15-35s-11w Barber,KS

PO Box 124
Kiowa KS 67070

Millie A#1

Job Ticket: 44100

DST#: 1

ATTN: David Barker

Test Start: 2012.01.17 @ 00:19:35

Mud and Cushion Information

Mud Type: Gel Chem

Cushion Type:

Oil API:

deg API

Mud Weight: 9.00 lb/gal

Cushion Length:

ft

Water Salinity:

4000 ppm

Viscosity: 57.00 sec/qt

Cushion Volume:

bbbl

Water Loss: 7.98 in³

Gas Cushion Type:

Resistivity: 0.00 ohm.m

Gas Cushion Pressure:

psig

Salinity: 4000.00 ppm

Filter Cake: 0.20 inches

Recovery Information

Recovery Table

Length ft	Description	Volume bbl
50.00	Drig.mud	0.246
0.00	390 ft.of GIP	0.000

Total Length: 50.00 ft Total Volume: 0.246 bbl

Num Fluid Samples: 0

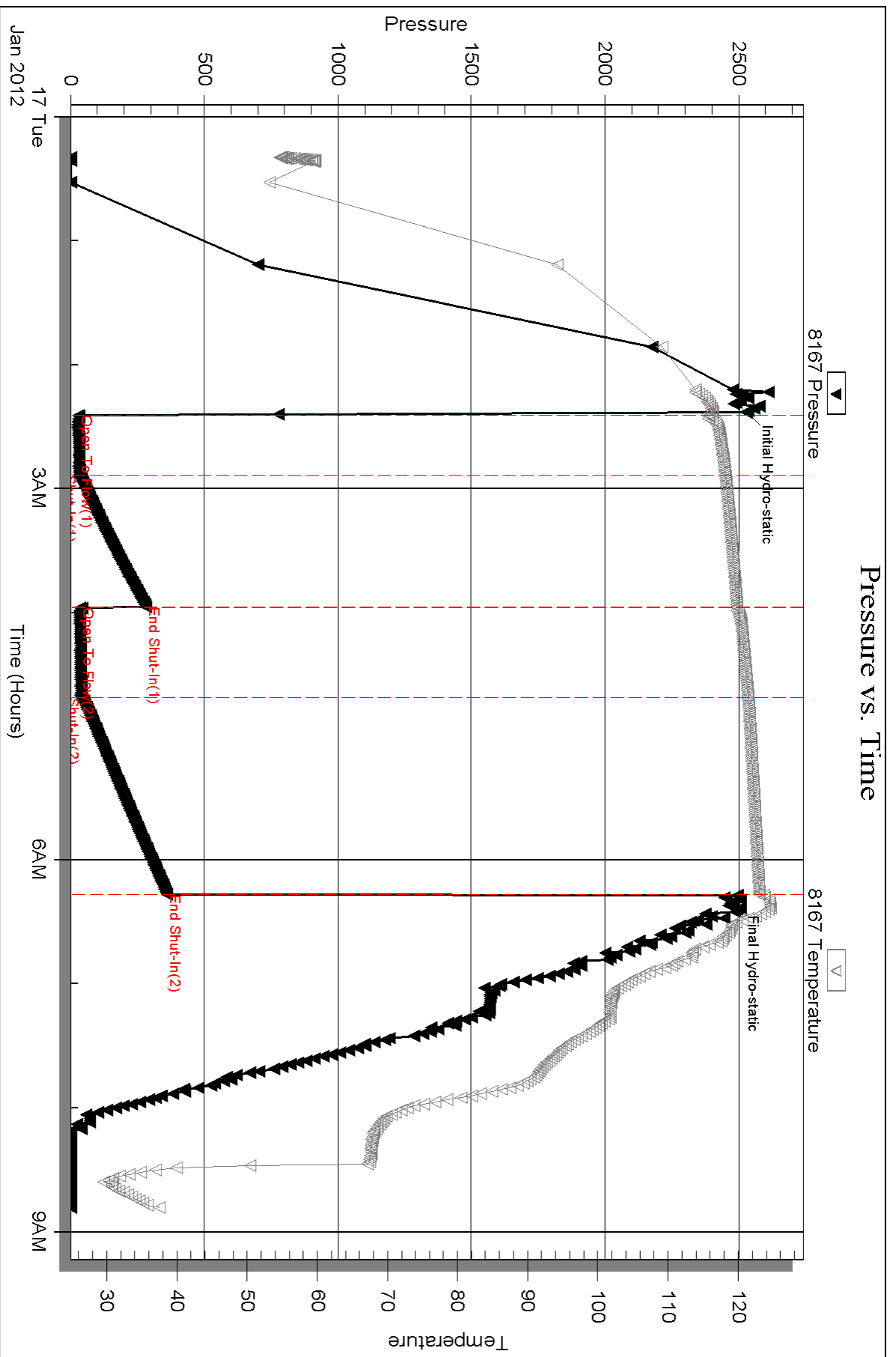
Num Gas Bombs: 0

Serial #: none

Laboratory Name:

Laboratory Location:

Recovery Comments:

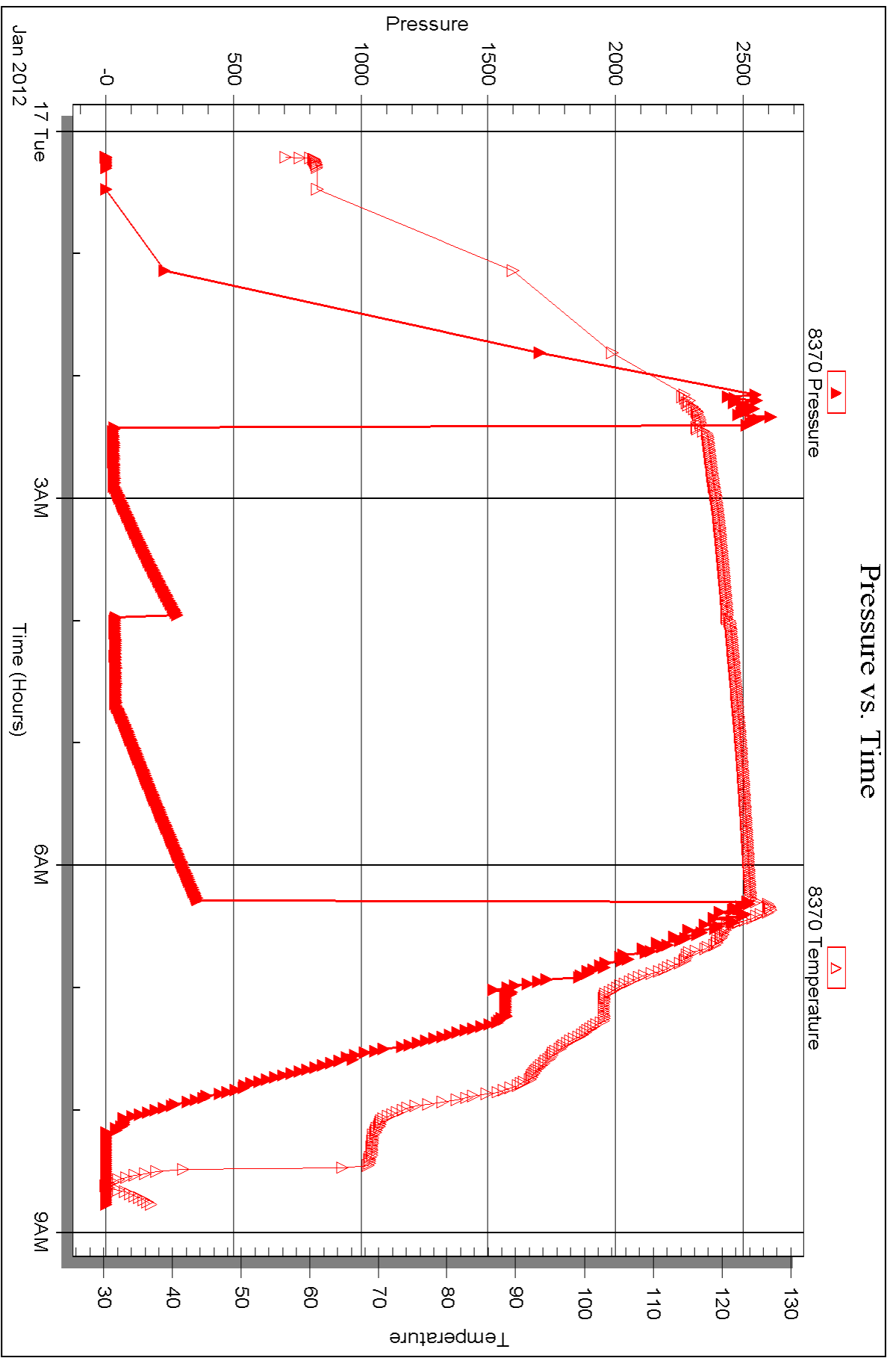


Serial #: 8370

Outside Chieftain Oil Co. Inc.

Millie A#1

DST Test Number: 1





DRILL STEM TEST REPORT

Prepared For: **Chieftain Oil Co.Inc.**

PO Box 124
Kiowa KS 67070

ATTN: David Barker

Millie A#1

15-35s-11w Barber,KS

Start Date: 2012.01.18 @ 04:10:59

End Date: 2012.01.18 @ 13:26:44

Job Ticket #: 44101 DST #: 2

Trilobite Testing, Inc
PO Box 362 Hays, KS 67601
ph: 785-625-4778 fax: 785-625-5620

Printed: 2012.01.25 @ 14:04:57



TRILOBITE TESTING, INC.

DRILL STEM TEST REPORT

Chieftain Oil Co. Inc.

15-35s-11w Barber, KS

PO Box 124
Kiowa KS 67070

Millie A#1

Job Ticket: 44101

DST#: 2

ATTN: David Barker

Test Start: 2012.01.18 @ 04:10:59

GENERAL INFORMATION:

Formation: **Simpson**

Deviated: No Whipstock: ft (KB)

Time Tool Opened: 06:56:59

Time Test Ended: 13:26:44

Test Type: Conventional Bottom Hole (Reset)

Tester: Gary Pevoteaux

Unit No: 56

Interval: 5322.00 ft (KB) To 5350.00 ft (KB) (TVD)

Reference Elevations: 1418.00 ft (KB)

Total Depth: 5350.00 ft (KB) (TVD)

1410.00 ft (CF)

Hole Diameter: 7.88 inches Hole Condition: Poor

KB to GR/CF: 8.00 ft

Serial #: 8167 Inside

Press @ Run Depth: 27.35 psig @ 5323.00 ft (KB)

Capacity: 8000.00 psig

Start Date: 2012.01.18

End Date:

2012.01.18

Last Calib.:

2012.01.18

Start Time: 04:11:00

End Time:

13:26:44

Time On Btm:

2012.01.18 @ 06:55:29

Time Off Btm:

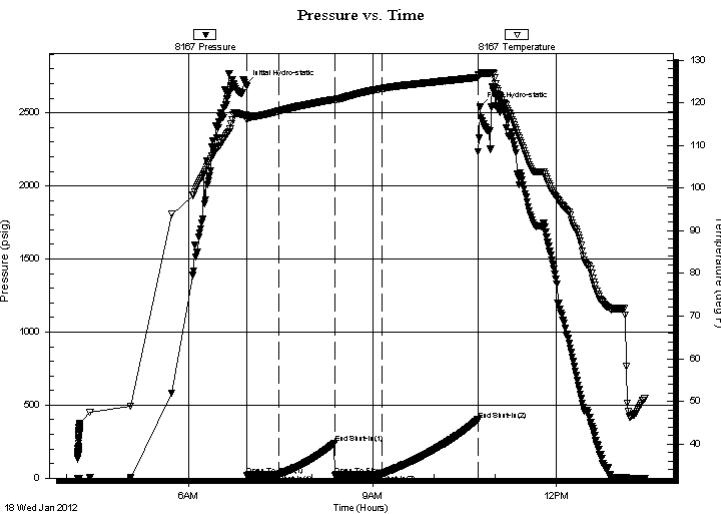
2012.01.18 @ 10:45:14

TEST COMMENT: IF:Weak blow . 3/4 - 1/2".

IS:No blow .

FF:Weak blow . 2 - 5".

FS:No blow .



PRESSURE SUMMARY

Time (Min.)	Pressure (psig)	Temp (deg F)	Annotation
0	2694.56	117.06	Initial Hydro-static
2	20.67	116.04	Open To Flow (1)
33	23.42	118.00	Shut-In(1)
88	238.77	120.77	End Shut-In(1)
88	19.67	120.74	Open To Flow (2)
134	27.35	123.31	Shut-In(2)
228	399.92	125.94	End Shut-In(2)
230	2541.03	126.64	Final Hydro-static

Recovery

Length (ft)	Description	Volume (bbl)
35.00	SOCM 2%o 98%m	0.17
0.00	185 ft. of GIP	0.00

* Recovery from multiple tests

Gas Rates

	Choke (inches)	Pressure (psig)	Gas Rate (Mcf/d)



**TRILOBITE
TESTING, INC.**

DRILL STEM TEST REPORT

Chieftain Oil Co. Inc.

15-35s-11w Barber, KS

PO Box 124
Kiowa KS 67070

Millie A#1

Job Ticket: 44101

DST#: 2

ATTN: David Barker

Test Start: 2012.01.18 @ 04:10:59

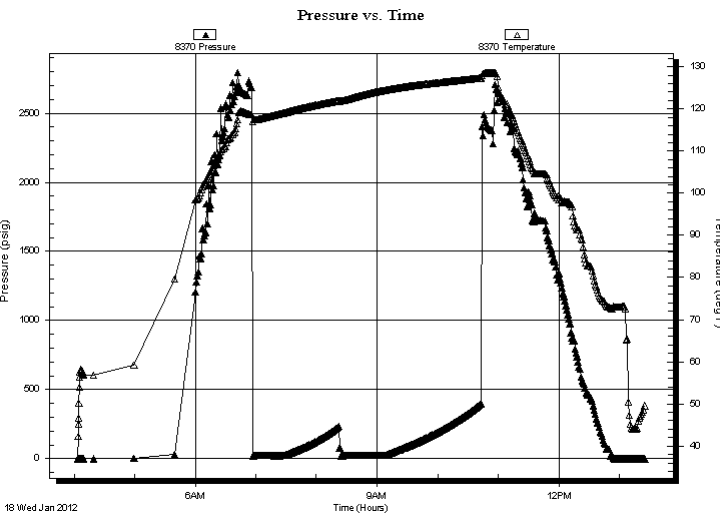
GENERAL INFORMATION:

Formation: **Simpson**
 Deviated: No Whipstock: ft (KB)
 Test Type: Conventional Bottom Hole (Reset)
 Time Tool Opened: 06:56:59
 Tester: Gary Pevoteaux
 Time Test Ended: 13:26:44
 Unit No: 56
 Interval: **5322.00 ft (KB) To 5350.00 ft (KB) (TVD)**
 Reference Elevations: 1418.00 ft (KB)
 Total Depth: 5350.00 ft (KB) (TVD)
 1410.00 ft (CF)
 Hole Diameter: 7.88 inches
 Hole Condition: Poor
 KB to GR/CF: 8.00 ft

Serial #: 8370 Outside

Press @ Run Depth: psig @ 5323.00 ft (KB) Capacity: 8000.00 psig
 Start Date: 2012.01.18 End Date: 2012.01.18 Last Calib.: 2012.01.18
 Start Time: 04:03:34 End Time: 13:24:59 Time On Btm:
 Time Off Btm:

TEST COMMENT: IF:Weak blow . 3/4 - 1/2".
 IS:No blow .
 FF:Weak blow . 2 - 5".
 FS:No blow .



PRESSURE SUMMARY

Time (Min.)	Pressure (psig)	Temp (deg F)	Annotation

Recovery

Length (ft)	Description	Volume (bbl)
35.00	SOCM 2%o 98%m	0.17
0.00	185 ft.of GIP	0.00

* Recovery from multiple tests

Gas Rates

Choke (inches)	Pressure (psig)	Gas Rate (Mcf/d)



**TRILOBITE
TESTING, INC.**

DRILL STEM TEST REPORT

TOOL DIAGRAM

Chieftain Oil Co. Inc.

15-35s-11w Barber, KS

PO Box 124
Kiowa KS 67070

Millie A#1

Job Ticket: 44101

DST#: 2

ATTN: David Barker

Test Start: 2012.01.18 @ 04:10:59

Tool Information

Drill Pipe:	Length: 5201.00 ft	Diameter: 3.80 inches	Volume: 72.96 bbl	Tool Weight: 2400.00 lb
Heavy Wt. Pipe:	Length: 0.00 ft	Diameter: 0.00 inches	Volume: 0.00 bbl	Weight set on Packer: 24000.00 lb
Drill Collar:	Length: 124.00 ft	Diameter: 2.25 inches	Volume: 0.61 bbl	Weight to Pull Loose: 126000.0 lb
			Total Volume: 73.57 bbl	Tool Chased 3.00 ft
Drill Pipe Above KB:	31.00 ft			String Weight: Initial 73000.00 lb
Depth to Top Packer:	5322.00 ft			Final 74000.00 lb
Depth to Bottom Packer:	ft			
Interval between Packers:	28.00 ft			
Tool Length:	56.00 ft			
Number of Packers:	2	Diameter: 6.75 inches		

Tool Comments:

Tool Description	Length (ft)	Serial No.	Position	Depth (ft)	Accum. Lengths
------------------	-------------	------------	----------	------------	----------------

C.O. Sub	1.00			5295.00	
Shut in tool	5.00			5300.00	
HMV	5.00			5305.00	
Jars	5.00			5310.00	
Safety Joint	3.00			5313.00	
Packer	4.00			5317.00	28.00 Bottom Of Top Packer
Packer	5.00			5322.00	
Stubb	1.00			5323.00	
Recorder	0.00	8167	Inside	5323.00	
Recorder	0.00	8370	Outside	5323.00	
Perforations	22.00			5345.00	
Bullnose	5.00			5350.00	28.00 Bottom Packers & Anchor

Total Tool Length: 56.00



**TRILOBITE
TESTING, INC.**

DRILL STEM TEST REPORT

FLUID SUMMARY

Chieftain Oil Co.Inc.

15-35s-11w Barber,KS

PO Box 124
Kiowa KS 67070

Millie A#1

Job Ticket: 44101

DST#: 2

ATTN: David Barker

Test Start: 2012.01.18 @ 04:10:59

Mud and Cushion Information

Mud Type: Gel Chem

Cushion Type:

Oil API:

deg API

Mud Weight: 9.00 lb/gal

Cushion Length:

ft

Water Salinity:

5000 ppm

Viscosity: 61.00 sec/qt

Cushion Volume:

bbbl

Water Loss: 8.78 in³

Gas Cushion Type:

Resistivity: 0.00 ohm.m

Gas Cushion Pressure:

psig

Salinity: 5000.00 ppm

Filter Cake: 0.20 inches

Recovery Information

Recovery Table

Length ft	Description	Volume bbbl
35.00	SOCM2%o 98%m	0.172
0.00	185 ft.of GIP	0.000

Total Length: 35.00 ft Total Volume: 0.172 bbl

Num Fluid Samples: 0

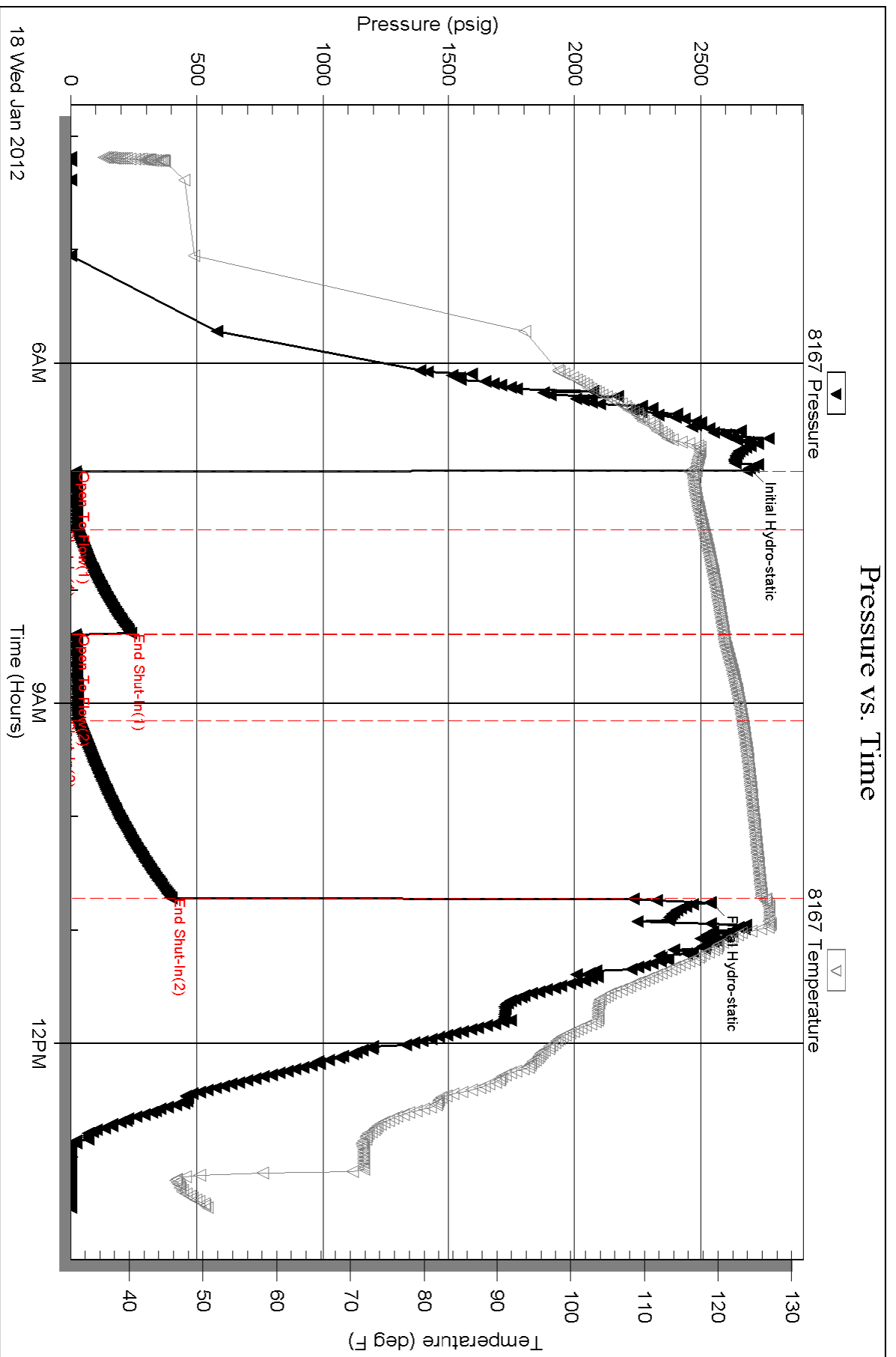
Num Gas Bombs: 0

Serial #: none

Laboratory Name:

Laboratory Location:

Recovery Comments:

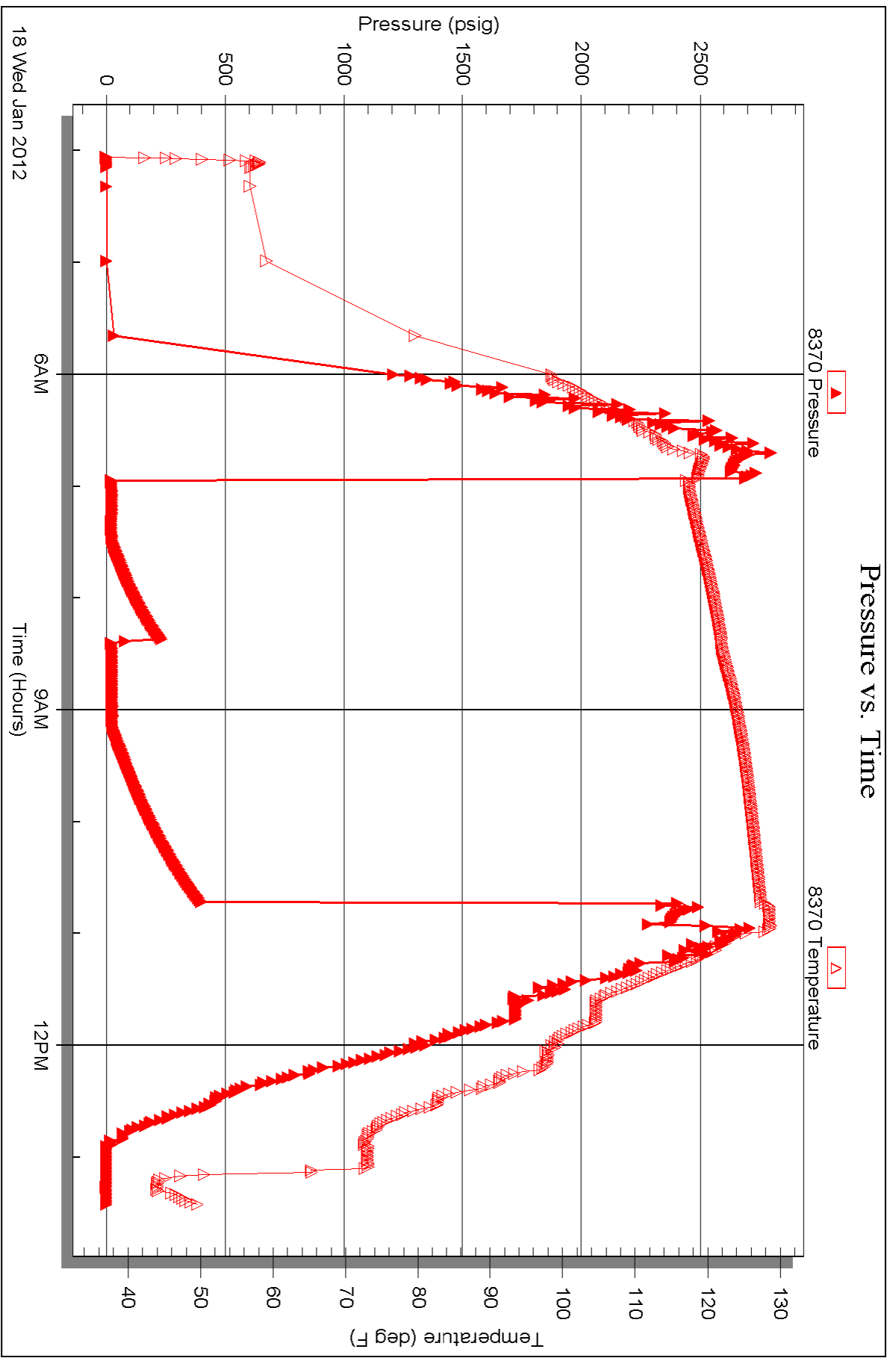


Serial #: 8370

Outside Chieftain Oil Co. Inc.

Miller A#1

DST Test Number: 2





TRILOBITE TESTING INC.

P.O. Box 1733 • Hays, Kansas 67601

RECEIVED
JAN 24 2012
BY:

Test Ticket

NO. 44100

Well Name & No. MILLIE #1 Test No. 1 Date 1-17-12
 Company CHIEFTAIN OIL CO. INC. Elevation 1418 KB 1410 GL
 Address 605 S. 6TH, P.O. BOX 124, KIOWA KS. 67070
 Co. Rep / Geo. DAVID BARBER Rig Fossil Drill. II A
 Location: Sec. 15 Twp. 35 S Rge. 11 W Co. BARBER State KS

Interval Tested 5056 - 5191' Zone Tested MESQUER
 Anchor Length 135' Drill Pipe Run 4921' Mud Wt. 9.2
 Top Packer Depth 5051' Drill Collars Run 124' Vis 57
 Bottom Packer Depth 5056' Wt. Pipe Run 0 WL 8.0cc
 Total Depth 5191' Chlorides 4,000 ppm System LCM 6th
 Blow Description IF: FAIR BLOW, INCREASE TO 10" - FSI, NO BLOW.

FF: FAIR BLOW, 4-13" FSI, NO BLOW.

Rec	Feet of	%gas	%oil	%water	%mud
<u>390</u>	<u>Coin in pipe</u>				
<u>50</u>	<u>Drlg. Mud.</u>				

Rec Total 50' FLOWN BHT 123° Gravity N/A API RW NC. @ ~ °F Chlorides 4,000 ppm

(A) Initial Hydrostatic 2530 Test 1325' T-On Location 2317
 (B) First Initial Flow 31 Jars 255 T-Started 0019
 (C) First Final Flow 30 Safety Joint 75' T-Open 0224
 (D) Initial Shut-In 282 Circ Sub _____ T-Pulled .0614
 (E) Second Initial Flow 36 Hourly Standby _____ T-Out 0848
 (F) Second Final Flow 40 Mileage (114) 159.60 Comments _____
 (G) Final Shut-In 361 Sampler _____
 (H) Final Hydrostatic 2476 Straddle _____ Ruined Shale Packer _____
 Shale Packer _____ Ruined Packer _____
 Extra Packer _____ Extra Copies _____
 Initial Open 30 Extra Recorder _____ Sub Total 0
 Initial Shut-In 60 Day Standby _____ Total 1809.60
 Final Flow 45 Accessibility _____ MP/DST Disc't _____
 Final Shut-In 90 Sub Total 1809.60

Approved By [Signature] Our Representative [Signature]
 TriLOBITE TESTING INC. shall not be liable for damaged of any kind of the property or personnel of the one for whom a test is made, or for any loss suffered or sustained, directly or indirectly, through the use of its equipment, or its statements or opinion concerning the results of any test, tools lost or damaged in the hole shall be paid for at cost by the party for whom the test is made.



TRILOBITE TESTING INC.

P.O. Box 1733 • Hays, Kansas 67601

RECEIVED
JAN 24 2012

Test Ticket

NO. 44101

Well Name & No. MILLIE A#1 Test No. 2 Date 1-18-12
 Company CHESTAIN OIL CO. INC. Elevation 1418 KB 1410 GL
 Address 605 S. 6TH P.O. Box 124, KIOWA Ks. 67070
 Co. Rep / Geo. DAVID BARKER Rig Fossil Drllg. II
 Location: Sec. 15 Twp. 35^S Rge. 11^W Co. BARBER State Ks.

Interval Tested 5322 - 5350' Zone Tested SEMPSON
 Anchor Length 28' Drill Pipe Run 5201 Mud Wt. 9.2
 Top Packer Depth 5317' Drill Collars Run 124 Vis 61
 Bottom Packer Depth 5322' Wt. Pipe Run 0 WL 8.8
 Total Depth 5350' Chlorides 5,000 ppm System LCM 6th
 Blow Description IF: WEAK BLOW. 3/4 - 1/2". ISI: No Blow.

FF: WEAK BLOW. 2-5". FSI: No Blow.

Rec	Feet of	%gas	%oil	%water	%mud
<u>185</u>	<u>Casing pipe</u>				
<u>35</u>	<u>SOCM</u>		<u>2</u>		<u>98</u>

Rec Total 35 Fluid BHT 126 Gravity N/A API RW N.C.@ °F Chlorides 5,000 ppm

(A) Initial Hydrostatic 2695 Test 1325' T-On Location 0350
 (B) First Initial Flow 21 Jars 250' T-Started 0410
 (C) First Final Flow 23 Safety Joint 75' T-Open 0656
 (D) Initial Shut-In 239 Circ Sub _____ T-Pulled 1044
 (E) Second Initial Flow 20 Hourly Standby _____ T-Out 1326
 (F) Second Final Flow 27 Mileage 114 159.60 Comments _____
 (G) Final Shut-In 400 Sampler _____
 (H) Final Hydrostatic 2541 Straddle _____ Ruined Shale Packer _____
 Shale Packer _____ Ruined Packer _____

Initial Open 30 Extra Packer _____ Extra Copies _____
 Initial Shut-In 60 Extra Recorder _____ Sub Total 08
 Final Flow 45 Day Standby _____ Total 1809.60
 Final Shut-In 90 Accessibility _____ MP/DST Disc't _____
 Sub Total 1809.60

Approved By [Signature] Our Representative [Signature]

Trilobite Testing Inc. shall not be liable for damaged of any kind of the property or personnel of the one for whom a test is made, or for any loss suffered or sustained, directly or indirectly, through the use of its equipment, or its statements or opinion concerning the results of any test, tools lost or damaged in the hole shall be paid for at cost by the party for whom the test is made.