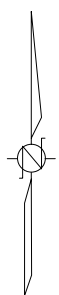


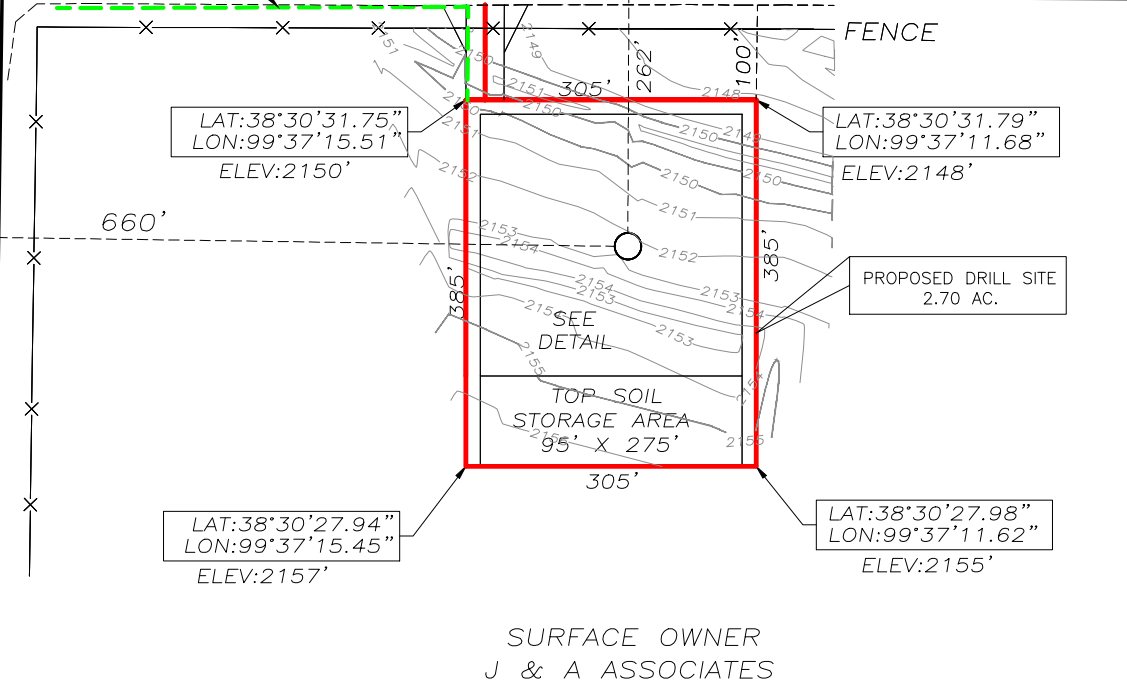
J & A ASSOCIATES
 11H-1
 LAT:38°30'30.25"
 LON:99°37'13.35"
 X:1679393
 Y:672549
 ELEV:2152

CENTERLINE PROPOSED
 ACCESS ROAD
 (40' WIDE ROW)
 100' / 0.09 AC.
 ROW WINGS = 0.02 AC.

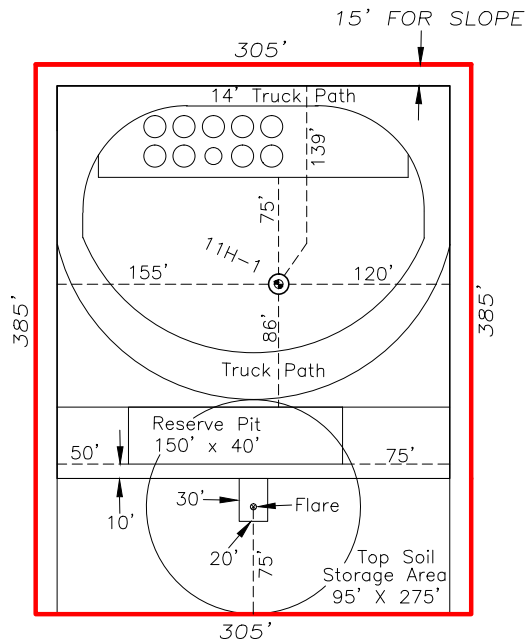
PROPOSED POWER LINE SECTION LINE & ROAD



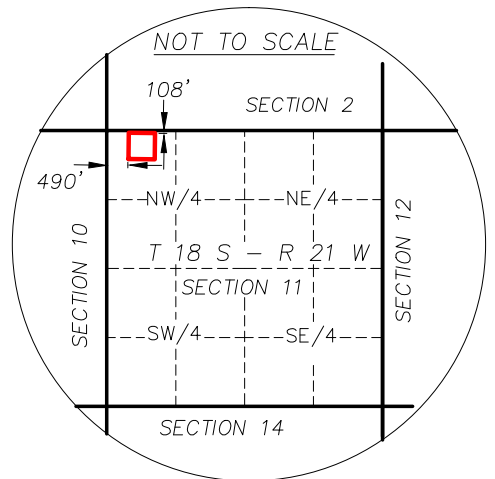
SECTION LINE & ROAD



T 18 S - R 21 W
 SECTION 11



DRILL SITE DETAIL - NOT TO SCALE



FINAL COPY

**CONSTRUCTION PLAT
 SHOWING PROPOSED
 DRILL SITE AND ACCESS ROAD
 ENCANA OIL & GAS (USA) INC.
 J & A ASSOCIATES 11H-1
 NESS COUNTY, KANSAS
 SCALE: 1" = 200'**

ROW WINGS = 0.02 AC.
 ACCESS ROAD = 0.09 AC.
 DRILL SITE = 2.70 AC.

TOTAL = 2.81 AC.