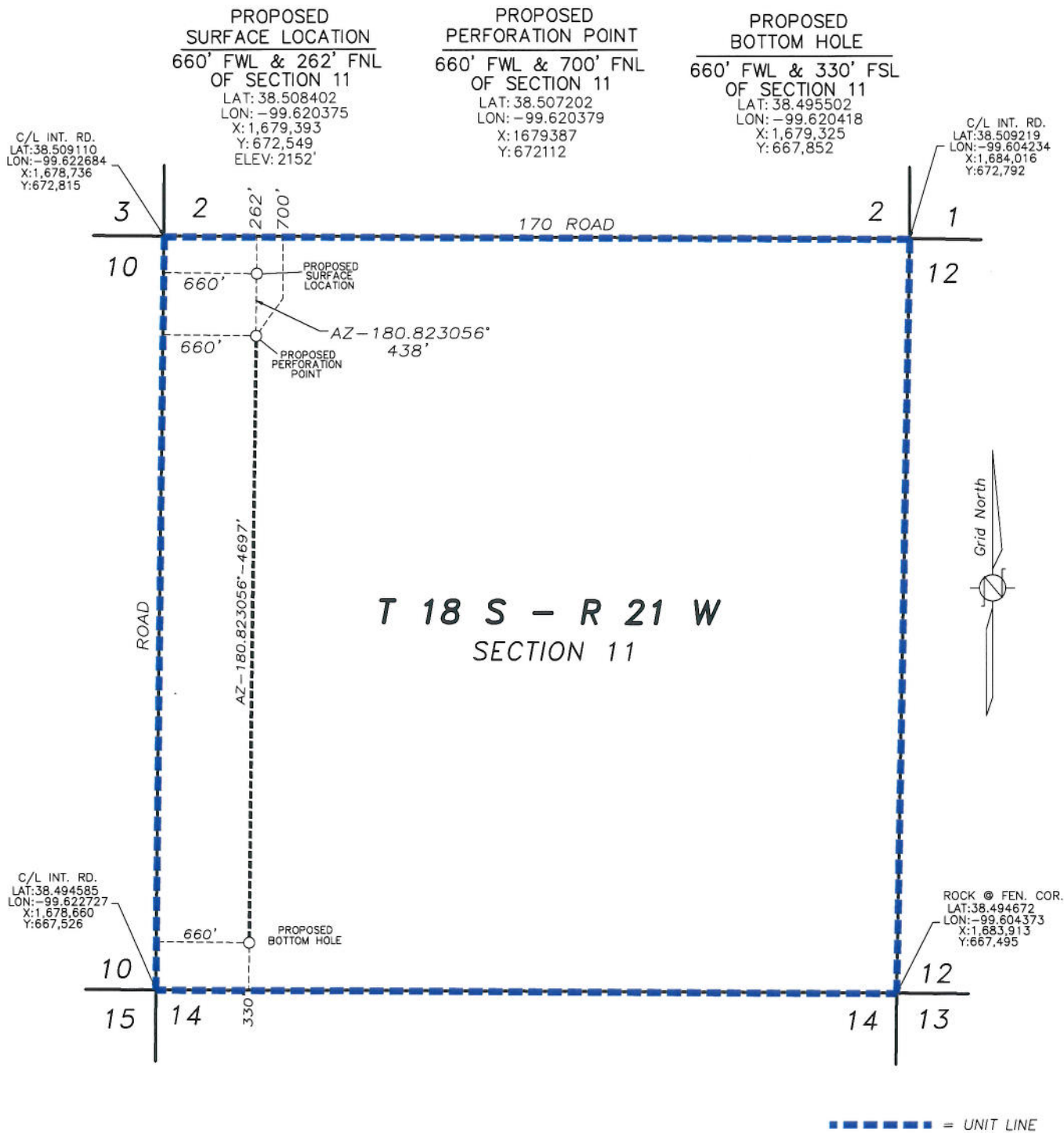


THIS DRAWING DOES NOT REPRESENT A BOUNDARY SURVEY, DISTANCES, COORDINATES AND BEARINGS SHOWN ARE NOT INTENDED TO BE DEFINITIVE IN ESTABLISHING ACTUAL TITLE BOUNDRIES. THIS DWAWING IS FOR CONSTRUCTION PURPOSES ONLY.

All Bearings, Distances, and Coordinates shown hereon are based on the Kansas State Plane Coordinate System, N.A.D. 27 Datum, South Zone.



FINAL COPY

**PROPOSED WELL LOCATION
ENCANA OIL & GAS (USA) INC.
J & A ASSOCIATES 11H-1
NESS COUNTY, KANSAS
SCALE: 1" = 1000'**

REV: 6-26-2012
REV: 6-22-2012
5-9-2012