



TRILOBITE TESTING, INC.

DRILL STEM TEST REPORT

Samuel Gary Jr. and Associates, Inc.

29-15-15 Russell, KS

1515 Wynkoop St. Ste 700
Denver, CO 80202

Kraft 1-29

Job Ticket: 46292

DST#: 2

ATTN: Clayton Camozzi

Test Start: 2012.03.07 @ 08:22:00

GENERAL INFORMATION:

Formation: **KC "H,I,J"**

Deviated: No Whipstock: ft (KB)

Time Tool Opened: 09:56:00

Time Test Ended: 15:20:00

Test Type: Conventional Bottom Hole (Reset)

Tester: Cody Bloedorn

Unit No: 41

Interval: 3320.00 ft (KB) To 3385.00 ft (KB) (TVD)

Reference Elevations: 1934.00 ft (KB)

Total Depth: 3385.00 ft (KB) (TVD)

1924.00 ft (CF)

Hole Diameter: 7.88 inches Hole Condition: Fair

KB to GR/CF: 10.00 ft

Serial #: 8734 Outside

Press @ Run Depth: 94.19 psig @ 3355.00 ft (KB)

Capacity: 8000.00 psig

Start Date: 2012.03.07

End Date:

2012.03.07

Last Calib.:

2012.03.07

Start Time: 08:22:01

End Time:

15:20:00

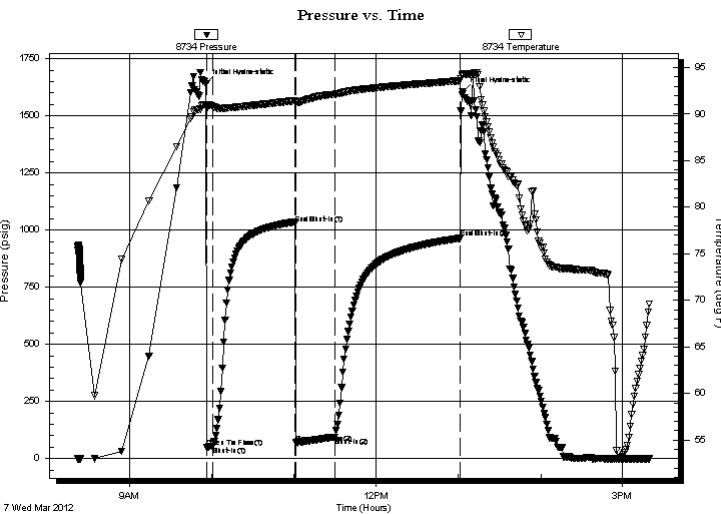
Time On Btm:

2012.03.07 @ 09:55:30

Time Off Btm:

2012.03.07 @ 13:03:00

TEST COMMENT: 05 - IF- B.O.B. in 4 Min.
60 - IS- No blow back
30 - FF- B.O.B. instantly
90 - FS- 1/2" blow , died at 37 Min.



PRESSURE SUMMARY

Time (Min.)	Pressure (psig)	Temp (deg F)	Annotation
0	1642.96	91.01	Initial Hydro-static
1	47.39	90.66	Open To Flow (1)
5	54.75	90.82	Shut-In(1)
65	1028.98	91.43	End Shut-In(1)
66	67.86	91.21	Open To Flow (2)
94	94.19	92.13	Shut-In(2)
186	964.46	93.59	End Shut-In(2)
188	1605.99	94.26	Final Hydro-static

Recovery

Length (ft)	Description	Volume (bbl)
62.00	GHOcm, 10%M, 40%O, 50%G	0.87
62.00	GO, 40%G, 60%O	0.87
40.00	GOCm, 5%G, 15%O, 80%M	0.56
0.00	744' of G.I.P.	0.00

* Recovery from multiple tests

Gas Rates

	Choke (inches)	Pressure (psig)	Gas Rate (Mcf/d)



**TRILOBITE
TESTING, INC.**

DRILL STEM TEST REPORT

FLUID SUMMARY

Samuel Gary Jr. and Associates, Inc.

29-15-15 Russell, KS

1515 Wynkoop St. Ste 700
Denver, CO 80202

Kraft 1-29

Job Ticket: 46292

DST#: 2

ATTN: Clayton Camozzi

Test Start: 2012.03.07 @ 08:22:00

Mud and Cushion Information

Mud Type: Gel Chem

Cushion Type:

Oil API:

39 deg API

Mud Weight: 9.00 lb/gal

Cushion Length:

ft

Water Salinity:

ppm

Viscosity: 66.00 sec/qt

Cushion Volume:

bbbl

Water Loss: 6.80 in³

Gas Cushion Type:

Resistivity: ohm.m

Gas Cushion Pressure:

psig

Salinity: 5200.00 ppm

Filter Cake: inches

Recovery Information

Recovery Table

Length ft	Description	Volume bbbl
62.00	GHOCM, 10%M, 40%O, 50%G	0.870
62.00	GO, 40%G, 60%O	0.870
40.00	GOCM, 5%G, 15%O, 80%M	0.561
0.00	744' of G.I.P.	0.000

Total Length: 164.00 ft Total Volume: 2.301 bbl

Num Fluid Samples: 0

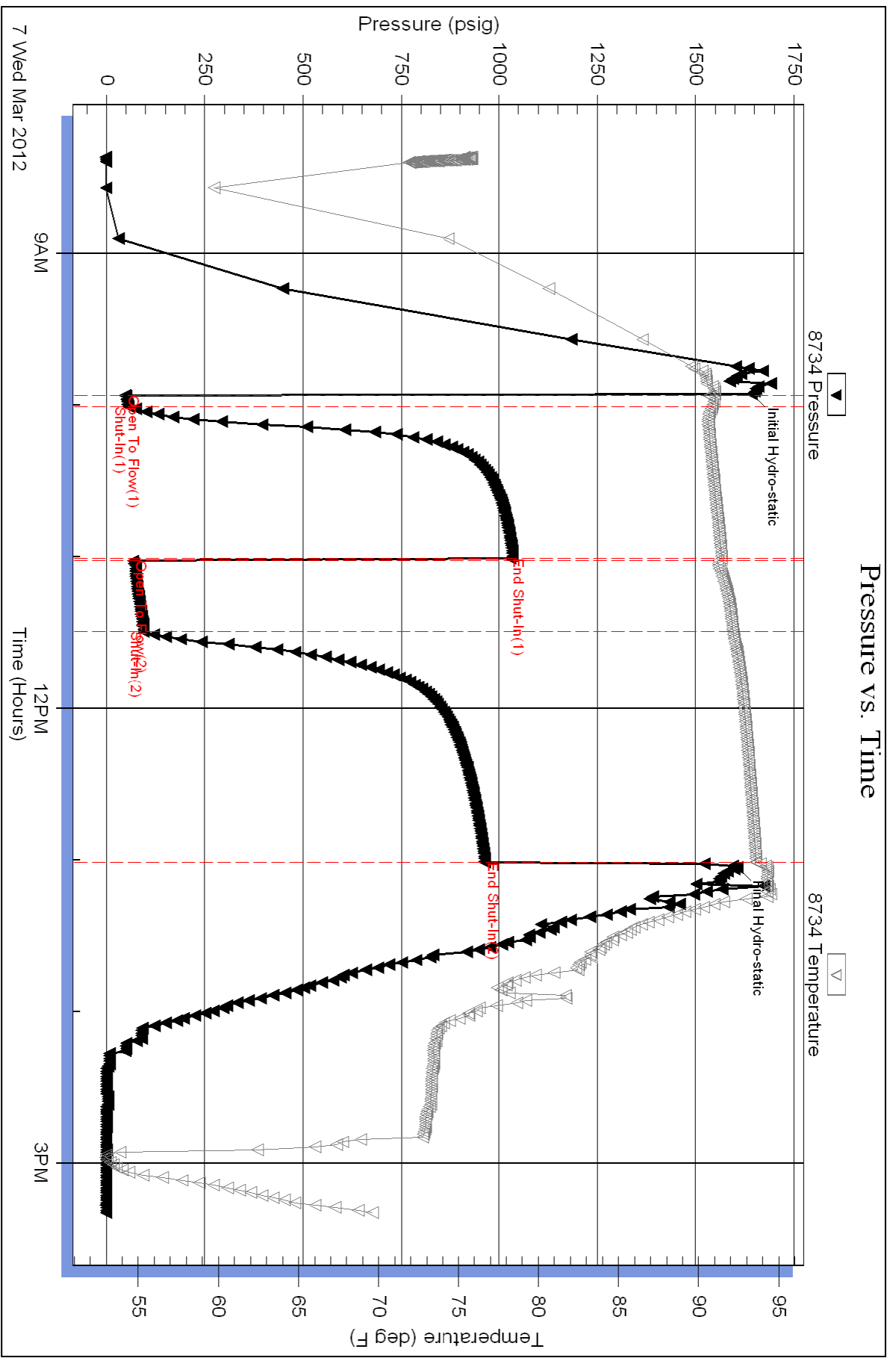
Num Gas Bombs: 0

Serial #:

Laboratory Name:

Laboratory Location:

Recovery Comments: Sampler: 3000 ml Oil, PSI = 550, Gravity: 39 @ 60 Degrees = 39



Serial #: 8365

Fluid

Samuel Gary Jr. and Associates, Inc.

Kraft 1-29

DST Test Number: 2

