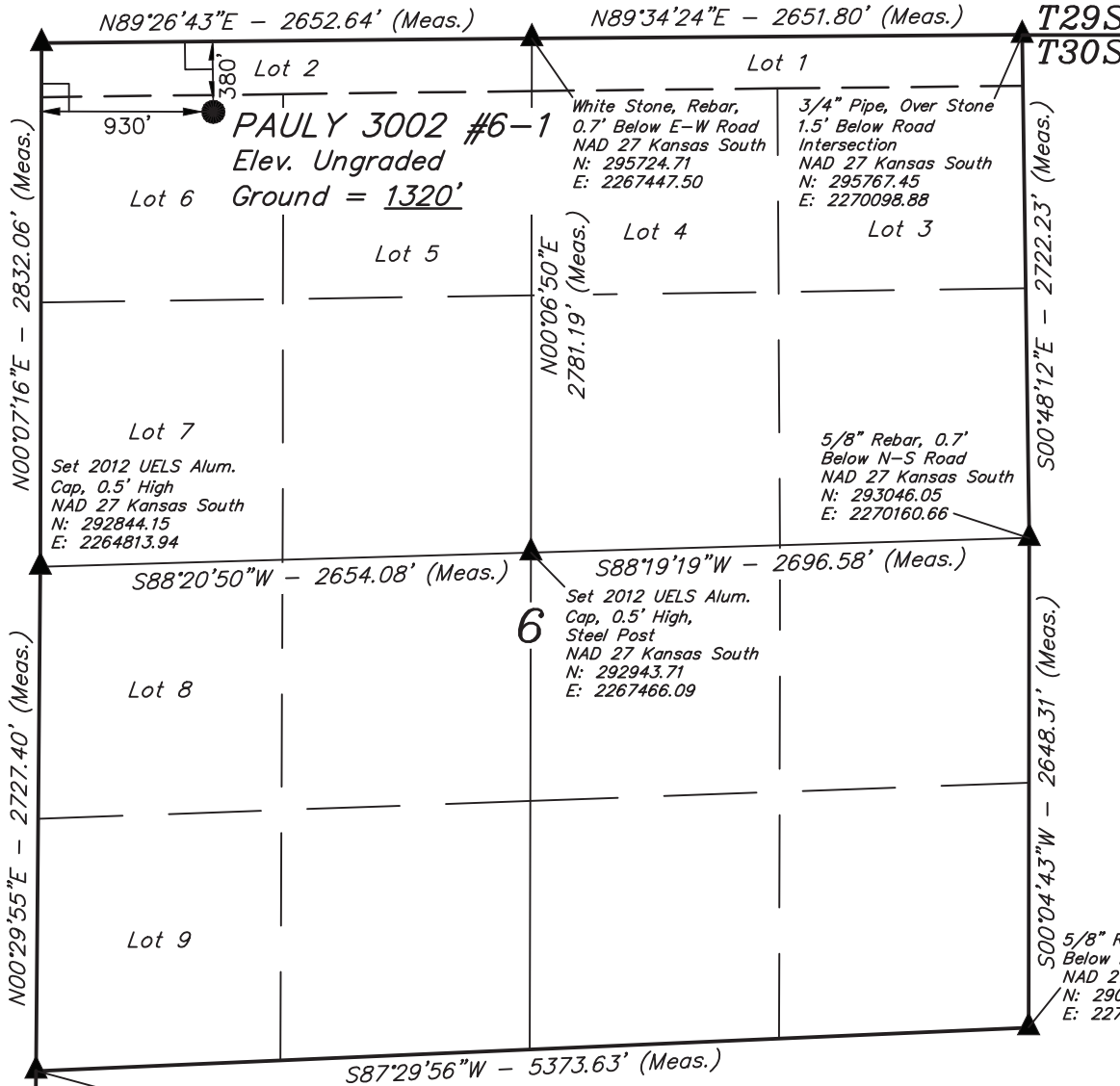


1 1/4" Pipe, 0.5'
Below Ground
NAD 27 Kansas South
N: 295676.03
E: 2264795.37

T30S, R2W, 6th P.M.

SGOMI

Well location, PAULY 3002 #6-1, located as shown in Lot 6 of Section 6, T30S, R2W, 6th P.M., Sumner County, Kansas.

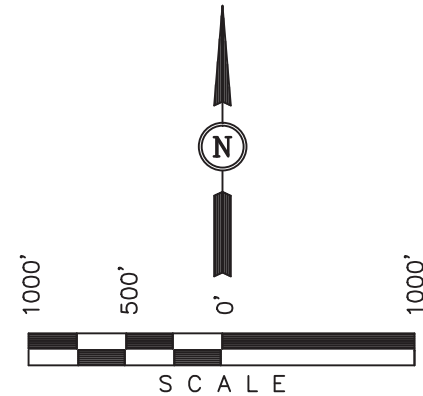


BASIS OF ELEVATION

BLACK ELEVATION LOCATED AT THE NORTHEAST CORNER OF SECTION 25, T31S, R4W, 6th P.M. TAKEN FROM THE MILAN, QUADRANGLE, KANSAS, SUMNER COUNTY, 7.5 MINUTE QUAD (TOPOGRAPHIC MAP) PUBLISHED BY THE UNITED STATES DEPARTMENT OF THE INTERIOR, GEOLOGICAL SURVEY. SAID ELEVATION IS MARKED AS BEING 1333 FEET.

BASIS OF BEARINGS

BASIS OF BEARINGS IS A G.P.S. OBSERVATION.



CERTIFICATE

THIS IS TO CERTIFY THAT THE ABOVE PLAT WAS PREPARED FROM FIELD NOTES OF ACTUAL SURVEYS MADE BY ME OR UNDER MY SUPERVISION AND THAT THE SAME ARE TRUE AND CORRECT TO THE BEST OF MY KNOWLEDGE AND BELIEF.

Justin J. ...
REGISTERED LAND SURVEYOR
REGISTRATION NO. 1458
STATE OF KANSAS

R 3 W
R 2 W
White Stone, Rebar, 0.7' Below Road, NAD 27 Kansas South, N: 290116.87, E: 2264813.86

LEGEND:

- └─┘ = 90° SYMBOL
- = PROPOSED WELL HEAD.
- ▲ = SECTION CORNERS LOCATED.

NAD 83 (#6-1 SURFACE LOCATION)
LATITUDE = 37°28'26.93" (37.474147)
LONGITUDE = 97°35'04.78" (97.584661)
NAD 27 (#6-1 SURFACE LOCATION)
LATITUDE = 37°28'26.86" (37.474128)
LONGITUDE = 97°35'03.60" (97.584333)
STATE PLANE NAD 27 (KANSAS SOUTH)
N: 295313.11 E: 2265727.78

UINTAH ENGINEERING & LAND SURVEYING 85 SOUTH 200 EAST - VERNAL, UTAH 84078 (435) 789-1017		
SCALE 1" = 1000'	DATE SURVEYED: 06-11-12	DATE DRAWN: 06-19-12
PARTY J.P. B.L. C.C.	REFERENCES G.L.O. PLAT	
WEATHER HOT	FILE SGOMI	