

OPERATOR

Company: TDI, INC
 Address: 1310 BISON ROAD
 HAYS, KANSAS 67601

Contact Geologist: TOM DENNING
 Contact Phone Nbr: 785-259-3141
 Well Name: WILLIE # 1
 Location: NW SE SE SE
 Pool: INFIELD
 State: Kansas

API: 15-051-26,287-00-00
 Field: REICHERT
 Country: USA



1310 BISON ROAD
 HAYS, KANSAS 67601
 (785) 628-2593

Scale 1:240 Imperial

Well Name: WILLIE # 1
 Surface Location: NW SE SE SE
 Bottom Location:
 API: 15-051-26,287-00-00
 License Number: 4787
 Spud Date: 5/4/2012 Time: 3:00 PM
 Region: ELLIS COUNTY Time: 7:00 AM
 Drilling Completed: 5/10/2012
 Surface Coordinates: 500' FSL & 415' FEL
 Bottom Hole Coordinates:
 Ground Elevation: 2033.00ft
 K.B. Elevation: 2043.00ft
 Logged Interval: 2900.00ft To: 3753.00ft
 Total Depth: 3750.00ft
 Formation: LANSING-KANSAS CITY
 Drilling Fluid Type: Chemical/Fresh Water Gel

SURFACE CO-ORDINATES

Well Type: Vertical
 Longitude: Latitude:
 N/S Co-ord: 500' FSL
 E/W Co-ord: 415' FEL

LOGGED BY

Company: SOLUTIONS CONSULTING
 Address: 108 W 35TH
 HAYS, KS 67601

Phone Nbr: (785) 639-1337
 Logged By: Geologist Name: HERB DEINES

CONTRACTOR

Contractor: SOUTHWIND DRILLING INC
 Rig #: 1
 Rig Type: MUD ROTARY
 Spud Date: 5/4/2012 Time: 3:00 PM
 TD Date: 5/10/2012 Time: 7:00 AM
 Rig Release: 5/11/2012 Time: 3:00 AM

ELEVATIONS

K.B. Elevation: 2043.00ft Ground Elevation: 2033.00ft
 K.B. to Ground: 10.00ft

NOTES

RECOMMENDATION TO RUN PRODUCTION CASING BASED ON FAVORABLE STRUCTURE AND POSITIVE RESULTS OF TWO DSTS.


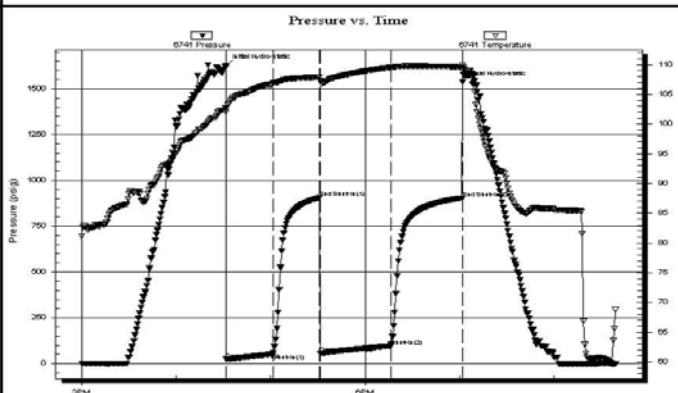
FORMATION TOPS SUMMARY AND DAILY PROGRESS AND ACTIVITY SUMMARY

WILLIE #1
NW SE SE SE
Sec.9-15s-19w

FORMATION	SAMPLE TOP	LOG TOP
Anhydrite	1257+ 786	1258+ 785
B-Anhydrite	1293+ 750	1294+ 749
Topeka	3011- 968	3012- 969
Heebner Shale	3289-1246	3289-1246
Toronto	3309-1266	3311-1268
LKC	3333-1290	3336-1293
BKC	3580-1537	3583-1540
Conglomerate	3618-1575	3626-1583
Arbuckle	3660-1617	3663-1620
Reagan Sand	3738-1695	Not Called
RTD	3750-1707	
LTD		3753-1710

- 5-04-12 RU, Spud, set surface casing to 213.73' w/150 sxs. Common, 2%gel, 3%CC, Slope survey 0 degree, WOC 8 hrs. Plug down 9:00PM.
- 5-05-12 350' drilling
- 5-06-12 1720' drilling
- 5-07-12 2640' drilling, displaced mud system 2861'-2891'
- 5-08-12 3305' drilling, DST # 1 ("C" zone")
- 5-09-12 3498' drilling, DST #2 ("H", "I", "J")
- 5-10-12 3750' drilling, RTD 3750', short trip, logs, run 5 1/2" production casing
- 5-11-12 3750' finish cementing top stage through DV, RD

DST #1 SUMMARY PAGE

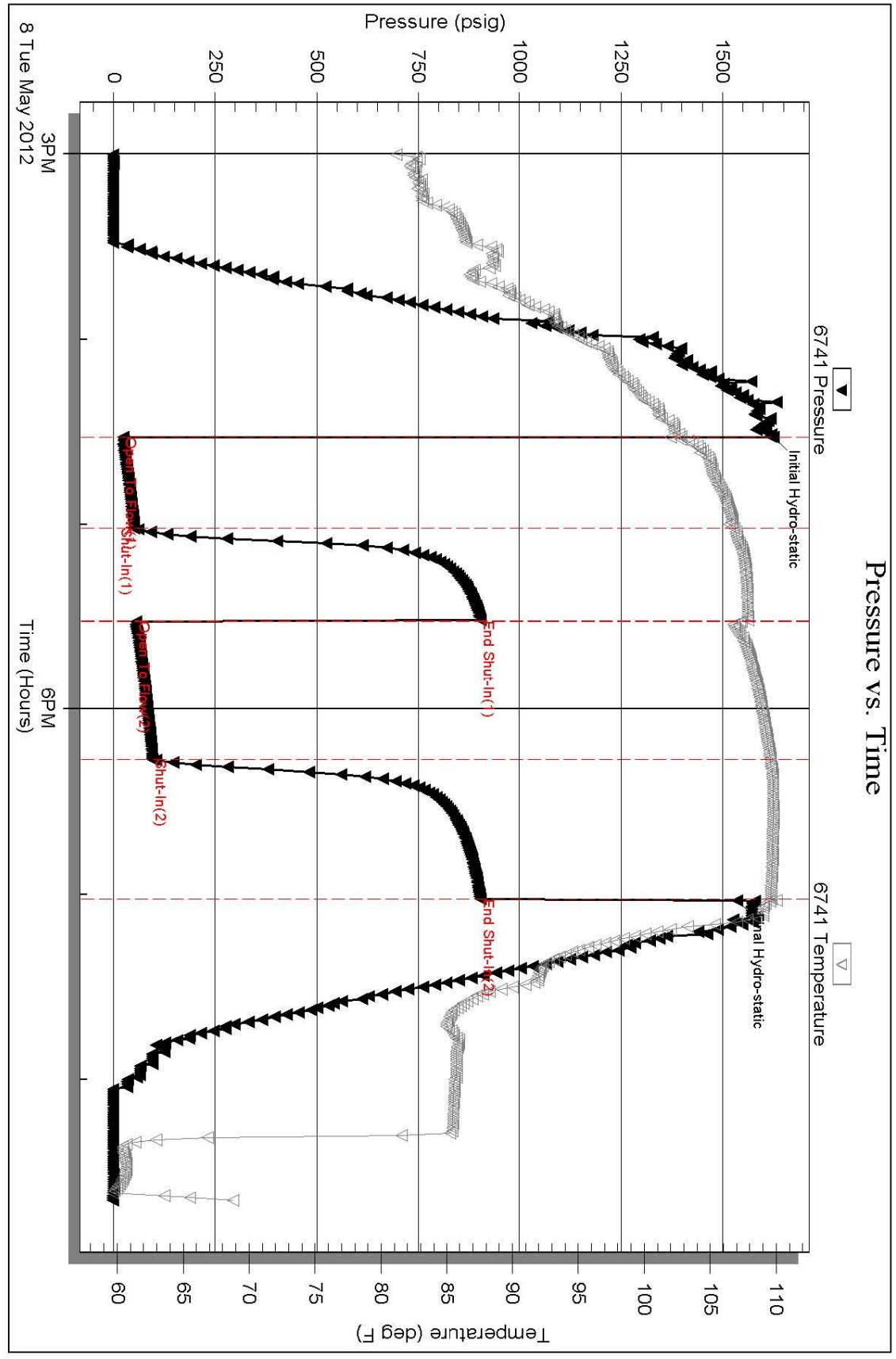
 <p>TRILOBITE TESTING, INC.</p>	<p>DRILL STEM TEST REPORT</p>																																										
<p>TDI Inc. 1310 Bison Rd Hays Ks 67601 ATTN: Herb Deines</p>	<p>9 15s 19w Ellis Willie # 1 Job Ticket: 45722 DST#: 1 Test Start: 2012.05.08 @ 15:00:00</p>																																										
<p>GENERAL INFORMATION:</p> <p>Formation: LKC "C" Deviated: No Whipstock: 2043.00 ft (KB) Time Tool Opened: 16:31:45 Time Test Ended: 20:40:00</p> <p>Test Type: Conventional Bottom Hole (Initial) Tester: Jim Svaty Unit No: 41</p> <p>Interval: 3349.00 ft (KB) To 3370.00 ft (KB) (TVD) Total Depth: 3370.00 ft (KB) (TVD) Hole Diameter: 7.88 inches Hole Condition: Fair</p> <p>Reference Elevations: 2043.00 ft (KB) 2033.00 ft (CF) KB to GR/CF: 10.00 ft</p>																																											
<p>Serial #: 6741 Inside</p> <p>Press@RunDepth: 95.35 psig @ 3350.00 ft (KB) Start Date: 2012.05.08 End Date: 2012.05.08 Start Time: 15:00:05 End Time: 20:39:09</p> <p>Capacity: 8000.00 psig Last Calib.: 2012.05.08 Time On Btm: 2012.05.08 @ 16:31:40 Time Off Btm: 2012.05.08 @ 19:01:55</p>																																											
<p>TEST COMMENT: 30-IFP- BOB in 4min 30-ISIP- Surface Blow Building to 3in 45-FFP- BOB in 1 1/4min 45-FSP-Surface Blow Building to 7 1/2in in 30min</p>																																											
	<table border="1" style="width: 100%; border-collapse: collapse;"> <thead> <tr> <th colspan="4" style="text-align: center;">PRESSURE SUMMARY</th> </tr> <tr> <th>Time (Min.)</th> <th>Pressure (psig)</th> <th>Temp (deg F)</th> <th>Annotation</th> </tr> </thead> <tbody> <tr> <td>0</td> <td>1625.27</td> <td>102.81</td> <td>Initial Hydro-static</td> </tr> <tr> <td>1</td> <td>23.44</td> <td>101.99</td> <td>Open To Flow (1)</td> </tr> <tr> <td>30</td> <td>50.75</td> <td>106.80</td> <td>Shut-In(1)</td> </tr> <tr> <td>60</td> <td>905.14</td> <td>107.84</td> <td>End Shut-In(1)</td> </tr> <tr> <td>60</td> <td>56.43</td> <td>107.37</td> <td>Open To Flow (2)</td> </tr> <tr> <td>105</td> <td>95.35</td> <td>109.56</td> <td>Shut-In(2)</td> </tr> <tr> <td>150</td> <td>903.98</td> <td>109.61</td> <td>End Shut-In(2)</td> </tr> <tr> <td>151</td> <td>1535.82</td> <td>109.99</td> <td>Final Hydro-static</td> </tr> </tbody> </table>			PRESSURE SUMMARY				Time (Min.)	Pressure (psig)	Temp (deg F)	Annotation	0	1625.27	102.81	Initial Hydro-static	1	23.44	101.99	Open To Flow (1)	30	50.75	106.80	Shut-In(1)	60	905.14	107.84	End Shut-In(1)	60	56.43	107.37	Open To Flow (2)	105	95.35	109.56	Shut-In(2)	150	903.98	109.61	End Shut-In(2)	151	1535.82	109.99	Final Hydro-static
PRESSURE SUMMARY																																											
Time (Min.)	Pressure (psig)	Temp (deg F)	Annotation																																								
0	1625.27	102.81	Initial Hydro-static																																								
1	23.44	101.99	Open To Flow (1)																																								
30	50.75	106.80	Shut-In(1)																																								
60	905.14	107.84	End Shut-In(1)																																								
60	56.43	107.37	Open To Flow (2)																																								
105	95.35	109.56	Shut-In(2)																																								
150	903.98	109.61	End Shut-In(2)																																								
151	1535.82	109.99	Final Hydro-static																																								
<table border="1" style="width: 100%; border-collapse: collapse;"> <thead> <tr> <th colspan="3" style="text-align: center;">Recovery</th> </tr> <tr> <th>Length (ft)</th> <th>Description</th> <th>Volume (bbl)</th> </tr> </thead> <tbody> <tr> <td>35.00</td> <td>GO 55%g 45%o</td> <td>0.21</td> </tr> <tr> <td>62.00</td> <td>GMCO 25%g 5%m 70%o</td> <td>0.87</td> </tr> <tr> <td>62.00</td> <td>GMVCO 30%g 2%m 18%w 50%o</td> <td>0.87</td> </tr> <tr> <td>62.00</td> <td>MCCV 5%m 10%o 85%w</td> <td>0.87</td> </tr> <tr> <td>0.00</td> <td>GIP 1575</td> <td>0.00</td> </tr> </tbody> </table>	Recovery			Length (ft)	Description	Volume (bbl)	35.00	GO 55%g 45%o	0.21	62.00	GMCO 25%g 5%m 70%o	0.87	62.00	GMVCO 30%g 2%m 18%w 50%o	0.87	62.00	MCCV 5%m 10%o 85%w	0.87	0.00	GIP 1575	0.00	<table border="1" style="width: 100%; border-collapse: collapse;"> <thead> <tr> <th colspan="4" style="text-align: center;">Gas Rates</th> </tr> <tr> <th></th> <th>Choke (inches)</th> <th>Pressure (psig)</th> <th>Gas Rate (Mcft/d)</th> </tr> </thead> <tbody> <tr> <td colspan="4" style="height: 20px;"> </td> </tr> </tbody> </table>			Gas Rates					Choke (inches)	Pressure (psig)	Gas Rate (Mcft/d)											
Recovery																																											
Length (ft)	Description	Volume (bbl)																																									
35.00	GO 55%g 45%o	0.21																																									
62.00	GMCO 25%g 5%m 70%o	0.87																																									
62.00	GMVCO 30%g 2%m 18%w 50%o	0.87																																									
62.00	MCCV 5%m 10%o 85%w	0.87																																									
0.00	GIP 1575	0.00																																									
Gas Rates																																											
	Choke (inches)	Pressure (psig)	Gas Rate (Mcft/d)																																								

DST # 1 EXPANDED CHART

Trilobite Testing, Inc

Ref. No: 45722

Printed: 2012.05.09 @ 08:13:31




Serial #: 6741

Inside TDI Inc.

Willie # 1

DST Test Number: 1

DST # 2 SUMMARY PAGE



TRILOBITE TESTING, INC.

DRILL STEM TEST REPORT

TDI Inc.
1310 Bison Rd
Hays Ks 67601
ATTN: Herb Deines

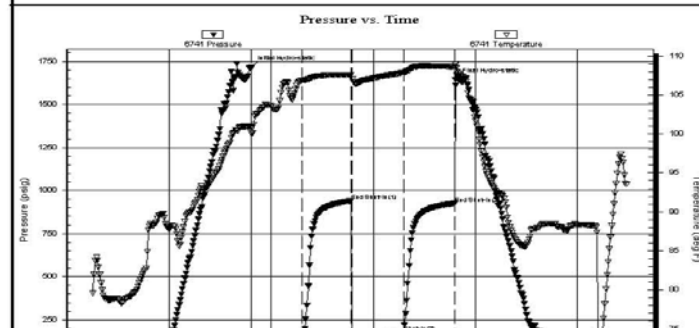
9 15s 19w Ellis
Willie # 1
Job Ticket: 45723 **DST#: 2**
Test Start: 2012.05.09 @ 12:15:00

GENERAL INFORMATION:

Formation: LKC "HI & J"	Test Type: Conventional Bottom Hole (Reset)
Deviated: No Whipstock: 2043.00 ft (KB)	Tester: Jim Svaty
Time Tool Opened: 13:48:25	Unit No: 41
Time Test Ended: 17:30:00	Reference Elevations: 2043.00 ft (KB)
Interval: 3448.00 ft (KB) To 3535.00 ft (KB) (TVD)	2033.00 ft (CF)
Total Depth: 3535.00 ft (KB) (TVD)	KB to GR/CF: 10.00 ft
Hole Diameter: 7.88 inches	Hole Condition: Fair

Serial #: 6741	Inside				
Press@RunDepth: 178.34 psig @ 3449.00 ft (KB)	Capacity: 8000.00 psig				
Start Date: 2012.05.09	End Date: 2012.05.09	Last Calib.: 2012.05.09			
Start Time: 12:15:05	End Time: 17:29:29	Time On Btm: 2012.05.09 @ 13:48:20			
		Time Off Btm: 2012.05.09 @ 15:48:20			

TEST COMMENT: 30-IFP- BOB in 5min
30-ISIP- 1 1/2in Blow in 5min Died in 12min
30-FFP- BOB in 2min
30-FSP- 8in Blow in 14min Died in 24min



PRESSURE SUMMARY			
Time (Min.)	Pressure (psig)	Temp (deg F)	Annotation
0	1715.14	100.87	Initial Hydro-static
1	27.26	100.07	Open To Flow (1)
30	113.68	106.84	Shut-In(1)
59	941.50	107.54	End Shut-In(1)
60	122.70	107.03	Open To Flow (2)
90	178.34	107.86	Shut-In(2)
120	926.38	108.63	End Shut-In(2)
120	1646.01	108.98	Final Hydro-static

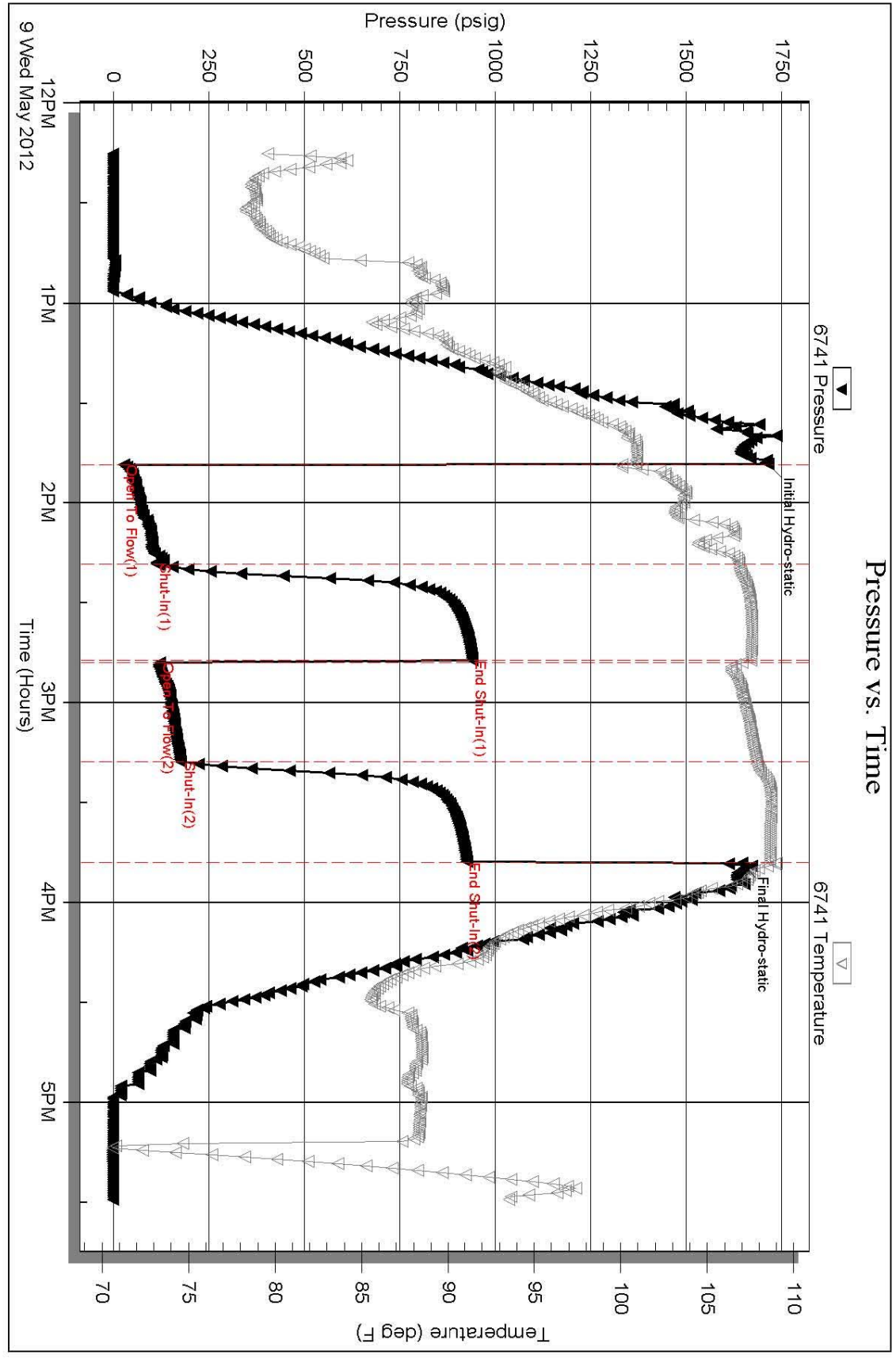


Recovery		
Length (ft)	Description	Volume (bbl)
30.00	MUD	0.15
62.00	GOM 50%g 25%o 25%m	0.86
62.00	OM 20%o 80%m	0.87
248.00	GMVCO 25%g 5%m 10%w 60%o	3.48
0.00	1332 GIP	0.00

Gas Rates		
Choke (inches)	Pressure (psig)	Gas Rate (Mc/ft)

Recovery from multiple tests
 Trilobite Testing, Inc Ref. No: 45723 Printed: 2012.05.10 @ 07:54:11

DST # 2 EXPANDED CHART



9 Wed May 2012 12PM 1PM 2PM 3PM 4PM 5PM
 Trilobite Testing, Inc Ref. No: 45723 Printed: 2012.05.10 @ 07:54:12

Serial #: 6741 Inside TDI Inc. Well # 1 DST Test Number: 2

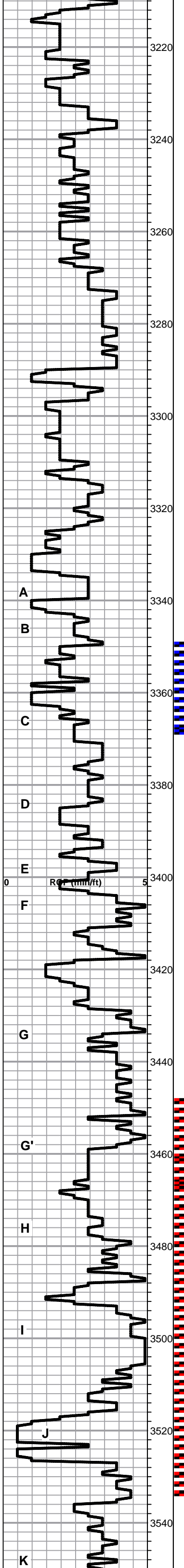
ROCK TYPES			
Cht vari	Lmst fw7>	shale, gry	Ss
Dolprim	Shgy	Carbon Sh	
Dol Lime	shale, grn	shale, red	

ACCESSORIES	
MINERAL	FOSSIL
▲ Chert, dark	◊ Oolite
◊ Varicolored chert	
△ Chert White	

OTHER SYMBOLS	
DST	
■ DST Int	
■ DST alt	

Curve Track #1	Curve Track #3
ROP (min/ft)	

Depth Interval DST Interval	DST	Lithology	Oil Show	Geological Descriptions	1:240 Imperial
				<p>ANHYDRITE Spl top 1257+786 ELog 1258+785 ANHYDRITE BASE Spl top 1293+750 ELog 1294+749</p> <p>1' drill time from 2900' to RTD 10' wet and dry samples 3000' to RTD</p> <p>Lime, brn-gray, fnxln, fossiliferous in part</p> <p>Shale, lt-med gray, soft sticky to soft blocky</p>	<p>Slope 214' 0 Deg Displaced 2861'-2891'</p>
				<p>TOPEKA Spl top 3011-968 ELog 3012-969</p> <p>Lime, lt-med brn, fnxln-granular, fossiliferous in part</p> <p>Lime, crm-brn, fnxln, chalk in part</p> <p>Lime, crm-lt brn, fnxln, slightly fossiliferous, crinoids, fusulinids</p> <p>Lime, med brn-grayish brn, fnxln</p> <p>Lime, lt-med brn, frnxln-granular, slightly chalky, NS</p> <p>Shale, med gray</p> <p>Lime, lt-dark brn, fnxln-vfxln in part</p> <p>Shale, med gray, calcareous</p> <p>Lime, med to dark brn, fn-vfxln, slightly fossiliferous</p>	
				<p>Lime, lt-med brn, gray mottling in part, fnxln-granular, chalky</p> <p>Lime, lt-med brn, fnxln-granular, chalk, slightly fossiliferous</p> <p>Lime, med brn, granular, fossiliferous, fusulinids</p> <p>Shale, black carbonaceous</p> <p>Lime, med brn-grayish brn, fnxln-granular in part</p>	
				<p>Lime, crm-lt brn, fnxln-granular, slightly fossiliferous, NS</p> <p>Lime, lt-med brn, fnxln-granular, slightly chalky in part</p> <p>Lime, lt brn-lt gray, fnxln-granular in part, slightly chalky</p> <p>Lime, lt-med brn, fnxln</p> <p>Shale, black carbonaceous</p>	



Lime, lt-med brn, fn-vfxln

Lime, lt-med brn, fnxln-granular, few pieces cxln with intercrystalline porosity, scattered to saturated stain with very light odor, NFO

Lime, lt-med brn, fnxln-granular, chalky

Lime, off wht-lt brn, fnxln-granular, slightly fossiliferous

Lime, lt brn-grayish brn, fnxln-granular in part, slightly chalky

Lime, crm-lt brn, fnxln, slightly chalky

HEEBNER SHALE Spl top 3289-1246 ELog 3289

Shale, black carbonaceous
Lime, med brn, vfxln
Lime, lime green to lt gray, soft forming soft mudballs in part

TORONTO Spl top 3309-1266 ELog 3311-1268

Lime, crm-lt brn, fnxln, some bedded chalk in part, NS

Shale, soft, red wash grading into light soft gray shale

LKC Spl top 3333-1290 ELog 3336-1293

Lime, lt brn-lt gray, fn-vfxln

Lime, crm-lt brn, fn-vfxln, slightly chalky

Shale, mix of reds, browns and grays, forms soft mud balls

Lime, crm-lt brn, fnxln with oolitic-fossil fragment chips in part, lt scattered stain, NFO, no detectable odor. Tested to confirm economic potential.

Lime, lt brn-lt grayish brn, mostly fnxln with few chips with oomoldic and vuggy porosity, scattered staining, NFO, no detectable odor. Zone should be perforated and tested.

Shale, black carbonaceous
Lime, lt gray, fn-vfxln

Lime, crm-lt brn, fnxln with scattered stain in a lime with scattered vuggy porosity. NFO, No odor, Microlog shows no reservoir development

Lime, crm, fnxln, chalky

Lime, crm-tan, fnxln-granular with bedded chalk, NS

Lime, crm-tan, fn-vfxln, bedded chalk in part

Lime, crm. cryptocrystalline, slightly chalky in part

Shale, grayish green, soft blocky, calcareous in part

Lime, tan-lt brn, fn-cryptocrystalline with bedded chalk in part NS

Lime, crm, fnxln, oolitic-fossil fragment mix with lt staining, NFO, No odor. Appears poorly developed in samples but microlog shows some permeability on top of zone and should be perforated and tested.

Lime, crm, fn-vfxln

Lime, crm-lt brn, oolitic-oomoldic, scattered to saturated staining, VMSFO on break, very light odor, barren clean oomoldic near bottom of zone. Tested to confirm economic potential.

Lime, crm-lt brn, fn-vfxln, slightly chalky, NS

Mud Check 3281'
WT 9.0
VIS 55
pH 11.0
WL 6.8
CHLORIDES 1900 ppm
CALCIUM Nil
LCM 1 #

DST #1 3349'-3370'
30-30-45-45
REC: 1575' GIP
35' GO
62' GMCO
62' GMWCO
62' MOCW
221' TOTAL FLUID

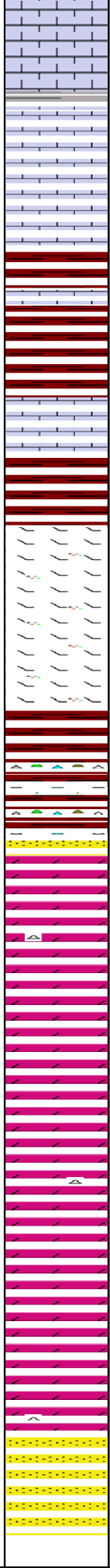
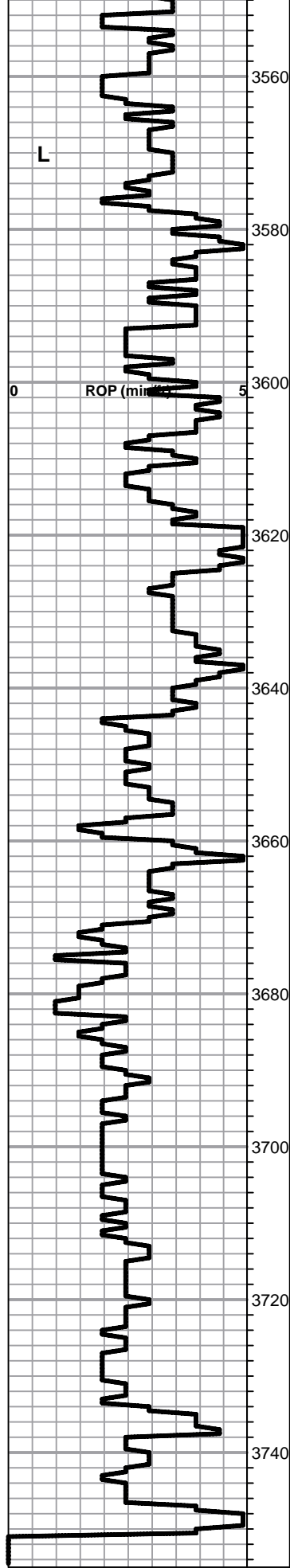
GRAVITY 39
rW .203@ 71 DEGREES
CHLORIDES 30,000ppm
ISIP: 905#
FSIP: 903 #
FP: 23-50, 56-95
1st OPEN: BOB 4 MIN.
BLOW BACK BUILT TO 3"
2nd OPEN: BOB 1.25 MIN
BLOW BACK BUILT TO 7"

Slope 3370' 1 degree

Mud Check 3481'
WT 9.1
VIS 49
pH 11.0
WL 6.4
CHLORIDES 2100 ppm
CALCIUM Trace
LCM 1#

DST #2 3448'-3535'
30-30-30-30
REC: 1332' GIP
30' MUD
62' GOM
62' OM
248' GMWCO
402' TOTAL FLUID

BHT: 108 DEGREES
ISIP: 941#
FSIP: 926#
FP: 27-113, 122-178
1st OPEN: BOB 5 MIN
BLOW BACK 1.5" DIED 12"
2nd OPEN: BOB 2 MIN
BLOW BACK 8" DIED 24"



Lime, crm-lt brn, fn-vfxln

Lime, crm-lt brn, fn-vfxln, bedded chalk in part NS

BKC Spl top 3580-1537 ELog 3583-1540

Shale, reddish brn, gray mix.

Shale, red - reddish brn, soft, blocky

Lime, offwht-lt brn, fn-vfxln, slightly chalky

Shale, reddish brn, blocky with clastic lime mix stained red

Dolomitic lime, offwht-lt gray, fn-vfxln, chert, fresh, sharp

Dolomitic lime, lt brn, frxn, orange chert, fresh, sharp, NS

Shales, vari color, soft, blocky

Shales, varicolor mixed with vari color cherts
Sandstone, qtz, well sorted, lt even stain, NFO, very thin bed

ARBUCKLE Spl top 3660-1617 ELog 3663-1620

Dolomite, ivory, fn-cxln, gilsonitic deposits in interxln porosity, no odor, NFO

Dolomite, fn-cxln, gilsonitic deposits in intercrystalline porosity

Dolomite, crm-ivory, fn-cxln, scattered gilsonite in part

Dolomite, crm-ivory, fn-cxln

Dolomite, crm, fn-cxln

REAGAN SAND Spl top 3738-1695

Sandstone, qtz, well, sorted, clear, fused in part, NS

RTD 3750-1707 LTD 3753-1710

Mud Check 3717'
WT 9.2
VIS 45
pH 10.5
WL 7.6
CHLORIDES 2900 ppm
CALCIUM Trace
LCM 2#

QUALITY OILWELL CEMENTING, INC.

Federal Tax I.D.# 20-2886107

Phone 785-483-2025

Home Office P.O. Box 32 Russell, KS 67665

No. 345

Cell 785-324-1041

Date	5-4-12	Sec.	9	Twp.	15	Range	19	County	Ellis	State	KS	On Location		Finish	9:00 p.m.
Lease	Willie	Well No.	1		Location # Antonino Jw 2s Winto										

Contractor	Southwind #1	Owner	To Quality Oilwell Cementing, Inc.
Type Job	Surface	You are hereby requested to rent cementing equipment and furnish cementer and helper to assist owner or contractor to do work as listed.	
Hole Size	12 1/4	T.D.	215
Csg.	8 5/8	Depth	215
Tbg. Size		Depth	
Tool		Depth	
Cement Left in Csg.	15'	Shoe Joint	The above was done to satisfaction and supervision of owner agent or contractor.
Meas Line		Displace	17 1/2 BCL
		Cement Amount Ordered	150 com 30% per 2% per 1

EQUIPMENT

Pumptrk	15	No.	Cementer	150
			Helper	
Bulktrk		No.	Driver	
			Driver	
Bulktrk	8	No.	Driver	3
			Driver	

JOB SERVICES & REMARKS

Remarks:	Hulls
Rat Hole	Salt
Mouse Hole	Flowseal
Centralizers	Kol-Seal
Baskets	Mud CLR 48
D/V or Port Collar	CFL-117 or CD110 CAF 38
8 5/8 on bottom. Est. Circulation.	Sand
Mix 150 SIC4 Displace.	Handling 158
Cement Circulated	Mileage

FLOAT EQUIPMENT

Guide Shoe	
Centralizer	
Baskets	8 5/8 Swage
AFU Inserts	
Float Shoe	
Latch Down	
Pumptrk Charge	Surface
Mileage	13

Signature	<i>[Signature]</i>	Tax	
		Discount	
		Total Charge	

JOB LOG

SWIFT Services, Inc.

DATE 05-10-12 PAGE NO. 7

CUSTOMER T.D.I. WELL NO. 1 LEASE WILLIE JOB TYPE 2-STAGE TICKET NO. 21363

CHART NO.	TIME	RATE (BPM)	VOLUME (BBL) (GAL)	PUMPS		PRESSURE (PSI)		DESCRIPTION OF OPERATION AND MATERIALS
				T	C	TUBING	CASING	
	2030							ONLOCATION CMT: Bottom 175 SWS EA 2 Top 175 SWS SMD RVD 3750, SET PIPE 3718, SJ 42.35, JESM 3706 5 1/2 14 1/4 D.V. ON TOP # 59, 1250 FT CMT 1, 3, 5, 7, 9, 11, 13, 58, BARVOT 2, 12, 59, 81 OUT 61, 82, 85
	2150							START CLASSIFICATION THRU BOTTOM - DROP BALL
	2315							BREAK CIRC & ROTATE PIPE
	0000	5.5	12				200	500 G.M. MUD FLUSH
		5	20					20 bbl. W.C. FLUSH
			42.5					175 SWS EA 2
								DROP PLUG, WASHHOLE
		6.0	0				200	START DISP 1/2 A20
			60				200	" " 1/2 MUD
			75				600	" " 1/2 W.C. FLUSH
			85				700	
	0030	4.5	90.4				1400	LAND PLUG RELEASE D.V., DROP D.V. OPENING PLUG PLUG RH 30, MH 15
			7.5					
	0045	5.0	5				200	OPEN D.V. 1/2 W.C.
			0					START SMD CMT 130 SWS
			75					END
								DROP D.V. CLOSING PLUG
		5.0	0				200	START DISP
							500	CIRC CMT 20 SWS
	0115		30.5				1300	LAND & CLOSE D.V.
	0200							JOB COMPLETE THANK YOU! DAVE JOHNS, TS