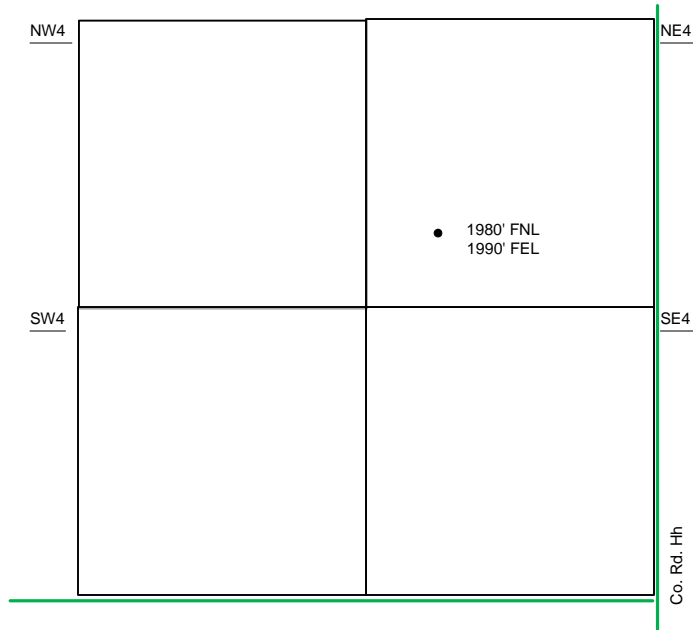
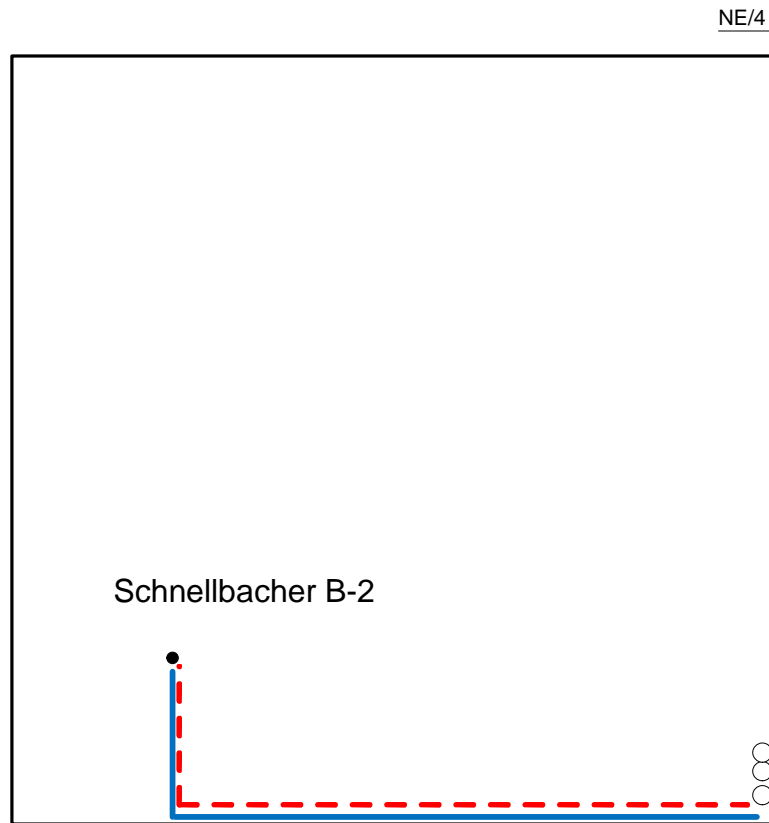


Proposed Plan of Construction  
 Schnellbacher B-2  
 Sec 31 T30S-R33W  
 Haskell County, KS



Sec 31 – T30S – R33W



Proposed Details of  
 NE/4 Sec 31 -T30S -R33W

Note-Drawing **Not** to Scale

Proposed Site Diagram  
 Schnellbacher B-2  
 June 28, 2012

