

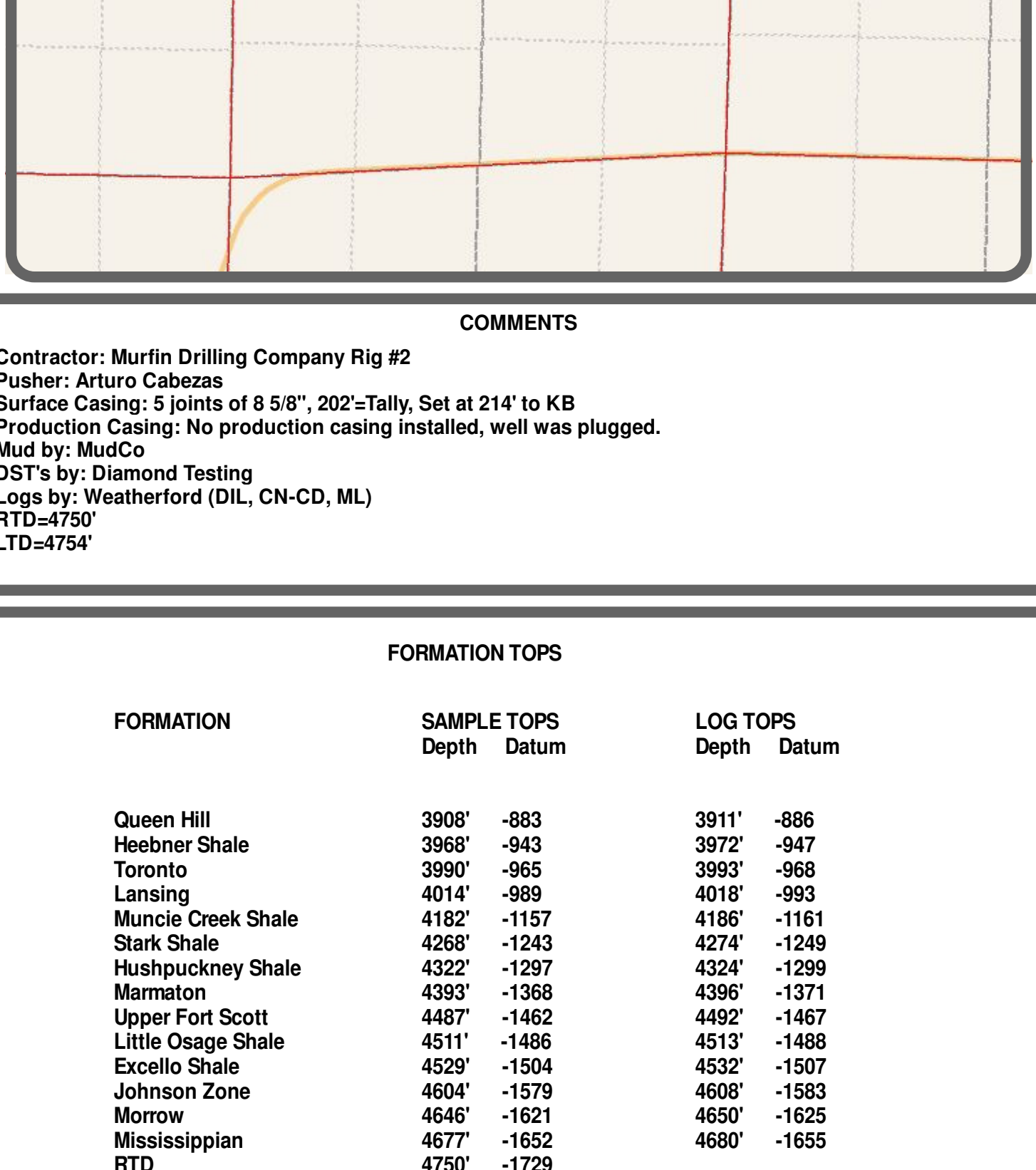
**Scale 1:240 (5"=100') Imperial
Measured Depth Log**

Well Name: #1-6 Conner
Location: 643' FNL, 934' FEL, SECTION 06-16S-32W
License Number: API: 15-171-20867
Spud Date: 05/25/2012
Surface Coordinates: LAT 38.6973973 LONG -100.8930327
Bottom Hole Coordinates: Vertical hole
Ground Elevation (ft): 3014' **K.B. Elevation (ft):** 3025'
Logged Interval (ft): 3750' **To:** RTD **Total Depth (ft):** 4750'
Formation: Mississippi at RTD
Type of Drilling Fluid: Chemical
Region: Scott County
Drilling Completed: 06/3/2012

Printed by WellSight Log Viewer from WellSight Systems 1-800-447-1534 www.WellSight.com

GEOLOGIST

Name: John Goldsmith
Company: John Goldsmith WellSite Service
Address: 322 Greenwood Ct.
Cheney, KS 67025
316-640-0236



COMMENTS

Contractor: Murlin Drilling Company Rig #2
Pusher: Arturo Cabezas
Surface Casing: 5 joints of 8 5/8", 202'=Tally, Set at 214' to KB
Production Casing: No production casing installed, well was plugged.
Mud by: MudCo
DST's by: Diamond Testing
Logs by: Weatherford (DIL, CN-CD, ML)
RTD=4750'
LTD=4754'

FORMATION TOPS

FORMATION	SAMPLE TOPS		LOG TOPS	
	Depth	Datum	Depth	Datum
Queen Hill	3909'	-883	3911'	-886
Heebner Shale	3968'	-943	3972'	-947
Toronto	3990'	-965	3993'	-968
Lansing	4014'	-989	4018'	-993
Muncie Creek Shale	4162'	-1157	4186'	-1161
Stark Shale	4268'	-1243	4274'	-1249
Hushpuckney Shale	4322'	-1297	4324'	-1299
Marmaton	4393'	-1368	4396'	-1371
Upper Fort Scott	4487'	-1462	4492'	-1467
Little Osage Shale	4511'	-1486	4513'	-1488
Excello Shale	4529'	-1504	4532'	-1507
Johnson Zone	4604'	-1579	4608'	-1583
Morrow	4646'	-1621	4650'	-1625
Mississippian	4677'	-1652	4680'	-1655
RTD	4750'	-1729		
LTD			4754'	-1733

