

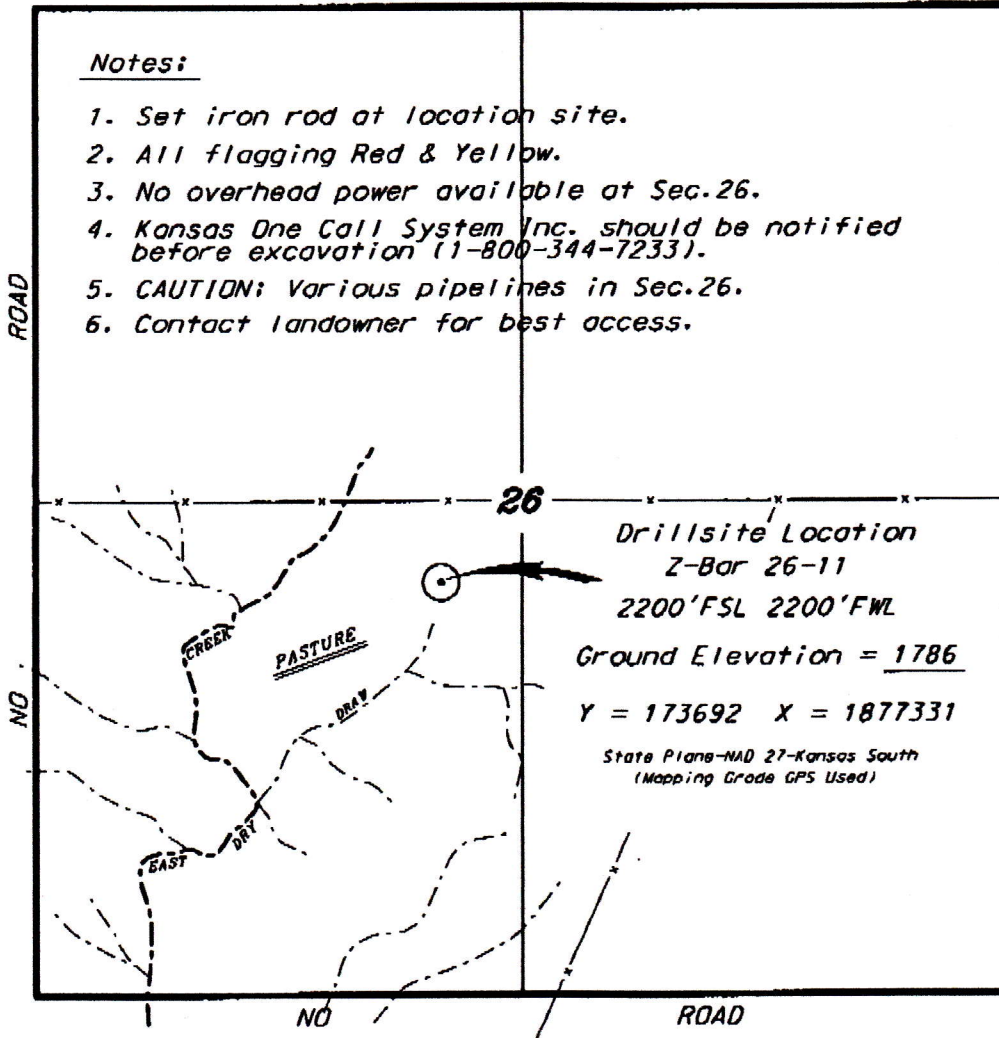
M & M EXPLORATION, INC.
Z-BAR LEASE
SW. 1/4, SECTION 26, T33S, R15W
BARBER COUNTY, KANSAS

NO ROAD

Notes:

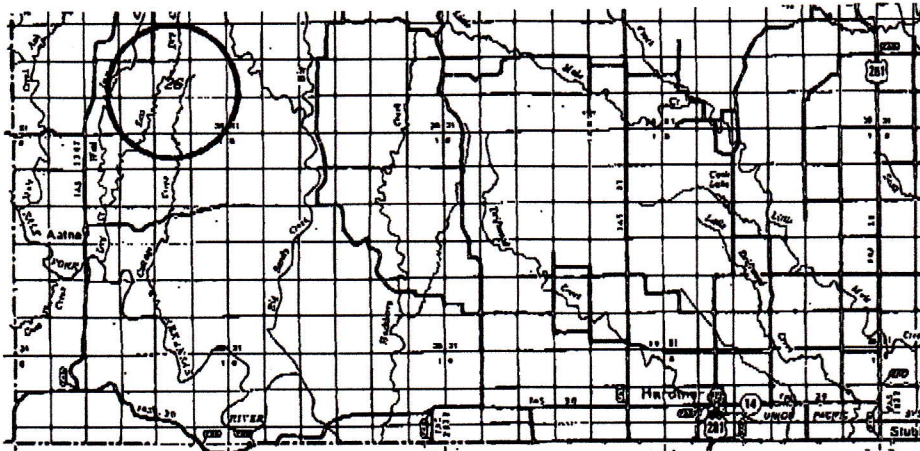
1. Set iron rod at location site.
2. All flagging Red & Yellow.
3. No overhead power available at Sec. 26.
4. Kansas One Call System Inc. should be notified before excavation (1-800-344-7233).
5. CAUTION: Various pipelines in Sec. 26.
6. Contact landowner for best access.

*Ingress and egress to location as shown on this plat is per usage only and may not be legally opened for public use. Contact landowner, tenant and county road department for access.



26

Drillsite Location
 Z-Bar 26-11
 2200' FSL 2200' FWL
 Ground Elevation = 1786
 Y = 173692 X = 1877331
 State Plane-NAD 27-Kansas South
 (Mapping Grade GPS Used)



* Controlling date is based upon the best maps and photographs available to us and upon a regular section of land containing 640 acres.
 * Approximate section lines were determined using the normal standard of care of oilfield surveyors practicing in the State of Kansas. The section corners, which establish the precise section lines, were not necessarily located, and the exact location of the drillsite location in the section is not guaranteed. Therefore, the operator, securing this service and occupying this plat and all other parties relying thereon agree to hold Central Kansas Oilfield Services, Inc., its officers and employees harmless from all losses, costs and expenses and said parties released from any liability from the denial of consequential damages.
 * Elevations derived from National Geodetic Vertical Datum.

Date June 20, 2012

CENTRAL KANSAS OILFIELD SERVICES, INC. (620)792-1977