



**TRILOBITE TESTING, INC.**

# DRILL STEM TEST REPORT

O'Brien Resources, LLC

25 17s 29w Lane, Ks

PO Box 6149  
Shreveport, La 71136

Schultz 25 #1

Job Ticket: 46619

DST#: 1

ATTN: Kurt Talbott

Test Start: 2012.06.06 @ 00:22:00

## GENERAL INFORMATION:

Formation: **LKC - H**

Deviated: No Whipstock: ft (KB)

Time Tool Opened: 03:15:00

Time Test Ended: 08:33:45

Test Type: Conventional Bottom Hole (Initial)

Tester: Bradley Walter

Unit No: 53

Interval: **4145.00 ft (KB) To 4185.00 ft (KB) (TVD)**

Reference Elevations: 2797.00 ft (KB)

Total Depth: 4185.00 ft (KB) (TVD)

2786.00 ft (CF)

Hole Diameter: 7.88 inches Hole Condition: Good

KB to GR/CF: 11.00 ft

**Serial #: 8677**

**Inside**

Press @ Run Depth: 41.37 psig @ 4146.00 ft (KB)

Capacity: 8000.00 psig

Start Date: 2012.06.06

End Date:

2012.06.06

Last Calib.:

2012.06.06

Start Time: 00:22:05

End Time:

08:33:44

Time On Btm:

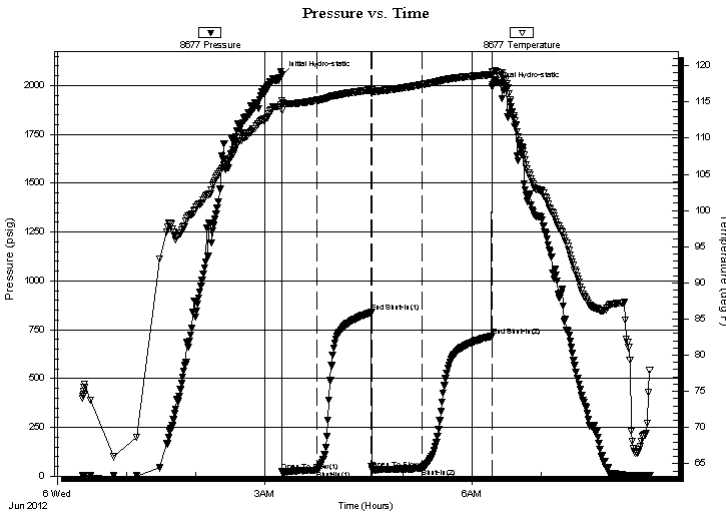
2012.06.06 @ 03:14:45

Time Off Btm:

2012.06.06 @ 06:17:30

TEST COMMENT: IF: 2" blow.  
IS: No return.  
FF: 1" blow.  
FS: No return.

## PRESSURE SUMMARY



Time (Min.)	Pressure (psig)	Temp (deg F)	Annotation
0	2053.83	115.21	Initial Hydro-static
1	26.12	113.85	Open To Flow (1)
30	30.30	115.21	Shut-In(1)
78	838.40	116.67	End Shut-In(1)
79	33.95	116.46	Open To Flow (2)
122	41.37	117.39	Shut-In(2)
183	717.07	118.78	End Shut-In(2)
183	1994.79	119.20	Final Hydro-static

## Recovery

Length (ft)	Description	Volume (bbl)
35.00	Mud 100m (oil puddle on top)	0.35

## Gas Rates

	Choke (inches)	Pressure (psig)	Gas Rate (Mcf/d)



# TRILOBITE TESTING, INC.

## DRILL STEM TEST REPORT

O'Brien Resources, LLC

25 17s 29w Lane, Ks

PO Box 6149  
Shreveport, La 71136

Schultz 25 #1

Job Ticket: 46625

DST#: 7

ATTN: Kurt Talbott

Test Start: 2012.06.11 @ 07:42:00

### GENERAL INFORMATION:

Formation: **Spurgin**  
 Deviated: No Whipstock: ft (KB)  
 Time Tool Opened: 10:45:45  
 Time Test Ended: 16:18:30  
 Interval: **4600.00 ft (KB) To 4660.00 ft (KB) (TVD)**  
 Total Depth: 4660.00 ft (KB) (TVD)  
 Hole Diameter: 7.88 inches Hole Condition: Good

Test Type: Conventional Bottom Hole (Reset)  
 Tester: Bradley Walter  
 Unit No: 53  
 Reference Elevations: 2797.00 ft (KB)  
 2786.00 ft (CF)  
 KB to GR/CF: 11.00 ft

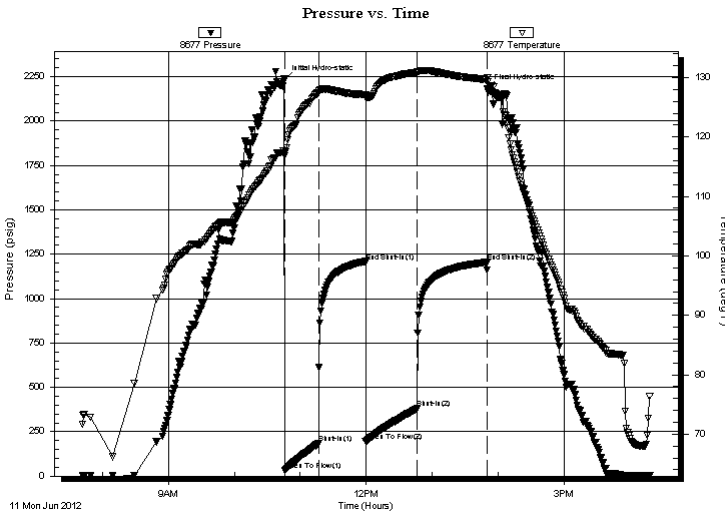
### Serial #: 8677

### Inside

Press @ Run Depth: 380.29 psig @ 4601.00 ft (KB) Capacity: 8000.00 psig  
 Start Date: 2012.06.11 End Date: 2012.06.11 Last Calib.: 2012.06.11  
 Start Time: 07:42:05 End Time: 16:18:30 Time On Btm: 2012.06.11 @ 10:45:30  
 Time Off Btm: 2012.06.11 @ 13:50:15

TEST COMMENT: IF: BOB @ 20 min.  
 IS: No return.  
 FF: BOB @ 25 min.  
 FS: No return.

### PRESSURE SUMMARY



Time (Min.)	Pressure (psig)	Temp (deg F)	Annotation
0	2236.62	117.72	Initial Hydro-static
1	32.42	116.84	Open To Flow (1)
31	183.21	127.51	Shut-In(1)
74	1209.47	127.11	End Shut-In(1)
74	195.31	126.62	Open To Flow (2)
121	380.29	130.88	Shut-In(2)
184	1204.76	129.69	End Shut-In(2)
185	2180.61	129.90	Final Hydro-static

### Recovery

Length (ft)	Description	Volume (bbl)
750.00	MCW 15m 85w	7.46

\* Recovery from multiple tests

### Gas Rates

Choke (inches)	Pressure (psig)	Gas Rate (Mcf/d)



**TRILOBITE TESTING, INC.**

**DRILL STEM TEST REPORT**

O'Brien Resources, LLC  
 PO Box 6149  
 Shreveport, La 71136  
 ATTN: Kurt Talbott

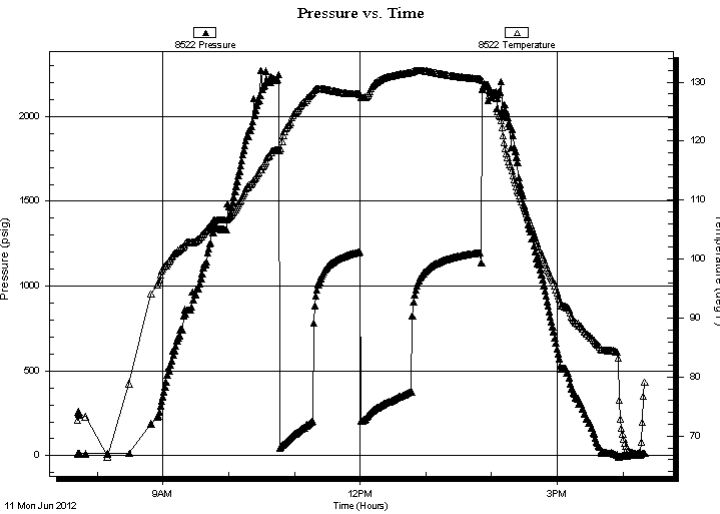
**25 17s 29w Lane, Ks**  
**Schultz 25 #1**  
 Job Ticket: 46625      **DST#: 7**  
 Test Start: 2012.06.11 @ 07:42:00

**GENERAL INFORMATION:**

Formation: **Spurgin**  
 Deviated: No Whipstock: ft (KB)  
 Time Tool Opened: 10:45:45  
 Time Test Ended: 16:18:30  
 Interval: **4600.00 ft (KB) To 4660.00 ft (KB) (TVD)**  
 Total Depth: 4660.00 ft (KB) (TVD)  
 Hole Diameter: 7.88 inches Hole Condition: Good  
 Test Type: Conventional Bottom Hole (Reset)  
 Tester: Bradley Walter  
 Unit No: 53  
 Reference Elevations: 2797.00 ft (KB)  
 2786.00 ft (CF)  
 KB to GR/CF: 11.00 ft

**Serial #: 8522      Outside**  
 Press @ Run Depth:                      psig @      4601.00 ft (KB)  
 Start Date:                      2012.06.11      End Date:                      2012.06.11  
 Start Time:                      07:42:05      End Time:                      16:19:45  
 Capacity:                      8000.00 psig  
 Last Calib.:                      2012.06.11  
 Time On Btm:  
 Time Off Btm:

**TEST COMMENT:** IF: BOB @ 20 min.  
 IS: No return.  
 FF: BOB @ 25 min.  
 FS: No return.



PRESSURE SUMMARY			
Time (Min.)	Pressure (psig)	Temp (deg F)	Annotation

Recovery		
Length (ft)	Description	Volume (bbl)
750.00	MCW 15m 85w	7.46

\* Recovery from multiple tests

Gas Rates			
	Choke (inches)	Pressure (psig)	Gas Rate (Mcf/d)



**TRILOBITE  
TESTING, INC.**

# DRILL STEM TEST REPORT

**FLUID SUMMARY**

O'Brien Resources, LLC

**25 17s 29w Lane, Ks**

PO Box 6149  
Shreveport, La 71136

**Schultz 25 #1**

Job Ticket: 46625

**DST#: 7**

ATTN: Kurt Talbott

Test Start: 2012.06.11 @ 07:42:00

## Mud and Cushion Information

Mud Type: Gel Chem

Cushion Type:

Oil API:

0 deg API

Mud Weight: 9.00 lb/gal

Cushion Length:

ft

Water Salinity:

24000 ppm

Viscosity: 65.00 sec/qt

Cushion Volume:

bbbl

Water Loss: 7.99 in<sup>3</sup>

Gas Cushion Type:

Resistivity: ohm.m

Gas Cushion Pressure:

psig

Salinity: 2000.00 ppm

Filter Cake: 1.00 inches

## Recovery Information

Recovery Table

Length ft	Description	Volume bbl
750.00	MCW 15m 85w	7.461

Total Length: 750.00 ft      Total Volume: 7.461 bbl

Num Fluid Samples: 0

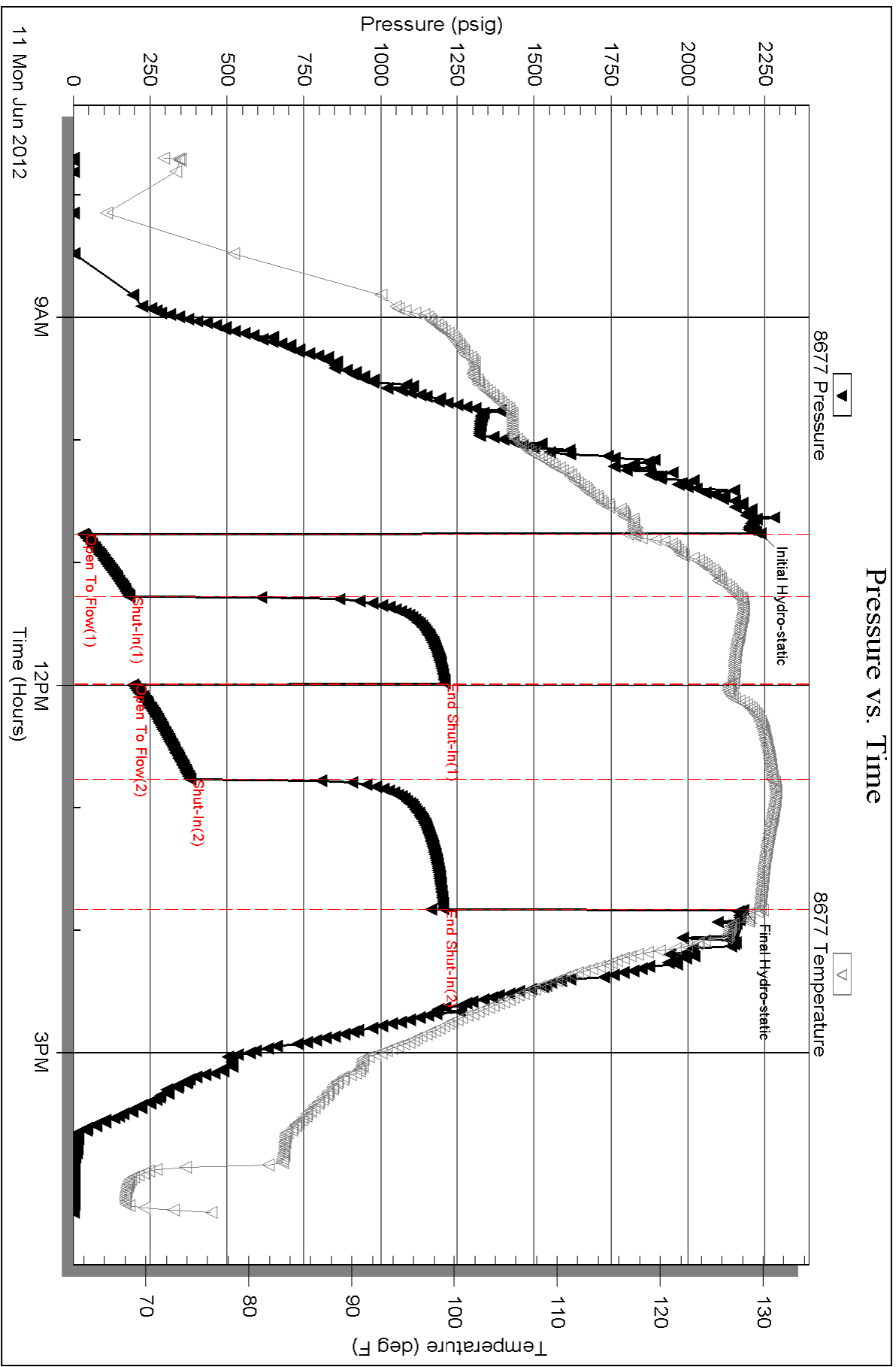
Num Gas Bombs: 0

Serial #:

Laboratory Name:

Laboratory Location:

Recovery Comments: rw is .260 @ 80F = 24,000ppm

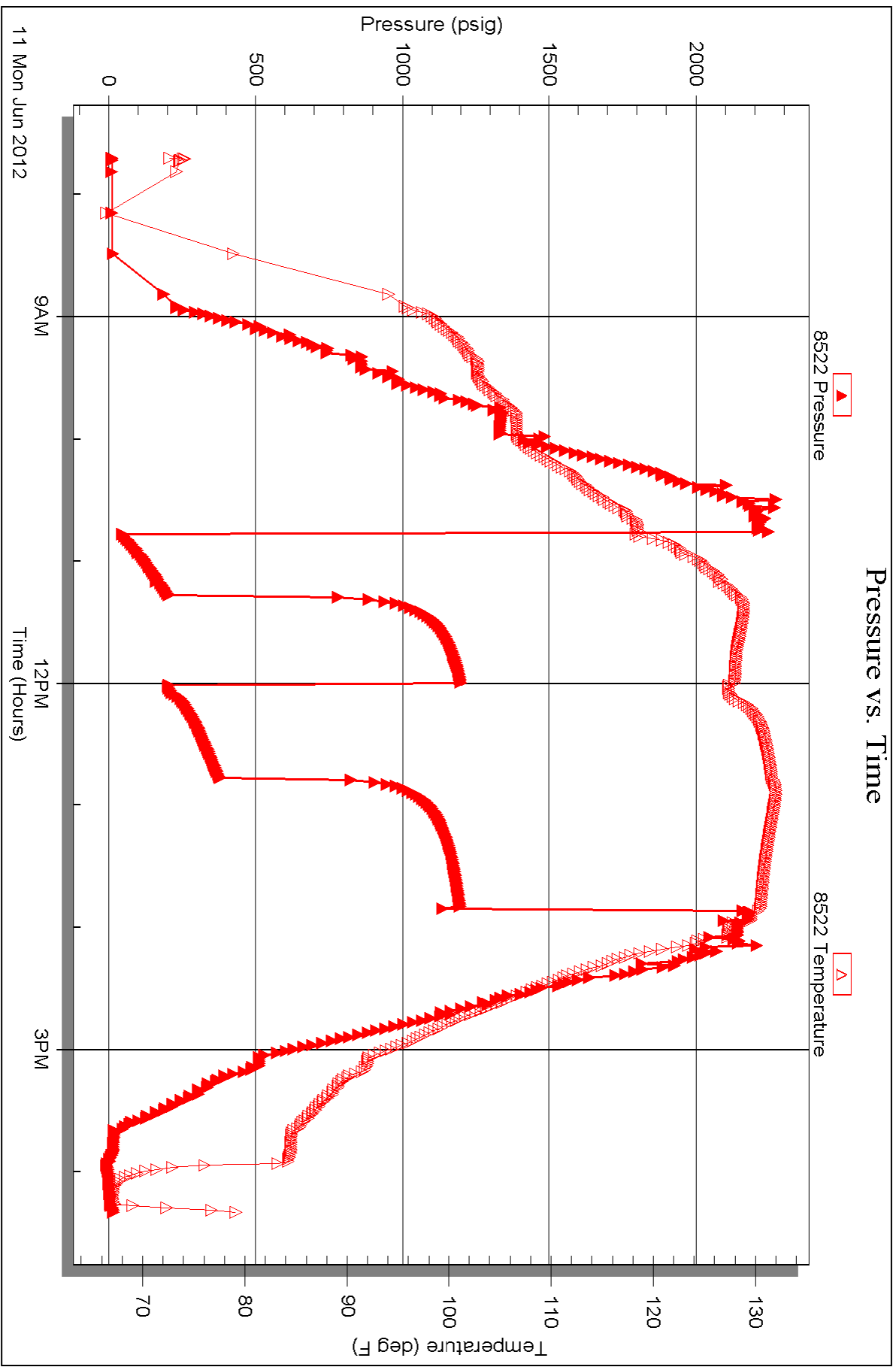


Serial #: 8522

Outside O'Brien Resources, LLC

Schultz 25 #1

DST Test Number: 7





**TRILOBITE  
TESTING, INC.**

# DRILL STEM TEST REPORT

O'Brien Resources, LLC

25 17s 29w Lane, Ks

PO Box 6149  
Shreveport, La 71136

Schultz 25 #1

Job Ticket: 46624

DST#: 6

ATTN: Kurt Talbott

Test Start: 2012.06.10 @ 09:37:00

## GENERAL INFORMATION:

Formation: **Johnson**

Deviated: No Whipstock: ft (KB)

Time Tool Opened: 11:53:15

Time Test Ended: 16:04:00

Test Type: Conventional Bottom Hole (Reset)

Tester: Bradley Walter

Unit No: 53

Interval: **4531.00 ft (KB) To 4575.00 ft (KB) (TVD)**

Reference Elevations: 2797.00 ft (KB)

Total Depth: 4185.00 ft (KB) (TVD)

2786.00 ft (CF)

Hole Diameter: 7.88 inches Hole Condition: Good

KB to GR/CF: 11.00 ft

**Serial #: 8677 Inside**

Press @ Run Depth: 22.42 psig @ 4532.00 ft (KB)

Capacity: 8000.00 psig

Start Date: 2012.06.10 End Date: 2012.06.10

Last Calib.: 2012.06.10

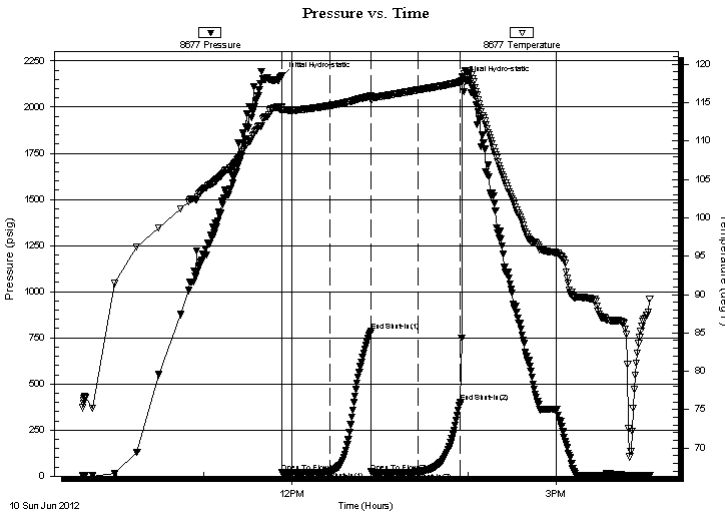
Start Time: 09:37:05 End Time: 16:03:59

Time On Btm: 2012.06.10 @ 11:53:00

Time Off Btm: 2012.06.10 @ 13:56:00

**TEST COMMENT:** IF: Surface blow, died @ 5 min.  
IS: No return.  
FF: No blow, Flushed tool, surge noted blow died.  
FS: No return.

## PRESSURE SUMMARY



Time (Min.)	Pressure (psig)	Temp (deg F)	Annotation
0	2167.83	114.52	Initial Hydro-static
1	18.58	113.96	Open To Flow (1)
33	24.45	114.62	Shut-In(1)
61	786.78	115.87	End Shut-In(1)
61	22.58	115.36	Open To Flow (2)
93	22.42	116.65	Shut-In(2)
122	400.85	117.71	End Shut-In(2)
123	2143.62	118.33	Final Hydro-static

## Recovery

Length (ft)	Description	Volume (bbl)
5.00	Mud 100m (oil spots)	0.05

\* Recovery from multiple tests

## Gas Rates

Choke (inches)	Pressure (psig)	Gas Rate (Mcf/d)



**TRILOBITE  
TESTING, INC.**

**DRILL STEM TEST REPORT**

O'Brien Resources, LLC

25 17s 29w Lane, Ks

PO Box 6149  
Shreveport, La 71136

**Schultz 25 #1**

Job Ticket: 46624

**DST#: 6**

ATTN: Kurt Talbott

Test Start: 2012.06.10 @ 09:37:00

**GENERAL INFORMATION:**

Formation: **Johnson**

Deviated: No Whipstock: ft (KB)

Time Tool Opened: 11:53:15

Time Test Ended: 16:04:00

Test Type: Conventional Bottom Hole (Reset)

Tester: Bradley Walter

Unit No: 53

**Interval: 4531.00 ft (KB) To 4575.00 ft (KB) (TVD)**

Reference Elevations: 2797.00 ft (KB)

Total Depth: 4185.00 ft (KB) (TVD)

2786.00 ft (CF)

Hole Diameter: 7.88 inches Hole Condition: Good

KB to GR/CF: 11.00 ft

**Serial #: 8522 Outside**

Press @ Run Depth: psig @ 4532.00 ft (KB)

Capacity: 8000.00 psig

Start Date: 2012.06.10 End Date: 2012.06.10

Last Calib.: 2012.06.10

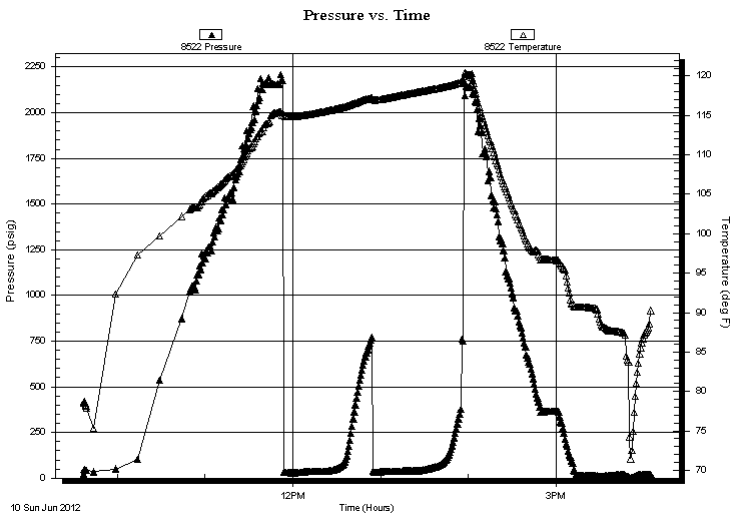
Start Time: 09:37:05 End Time: 16:04:59

Time On Btm:

Time Off Btm:

**TEST COMMENT:** IF: Surface blow, died @ 5 min.  
IS: No return.  
FF: No blow, Flushed tool, surge noted blow died.  
FS: No return.

**PRESSURE SUMMARY**



Time (Min.)	Pressure (psig)	Temp (deg F)	Annotation

**Recovery**

**Gas Rates**

Length (ft)	Description	Volume (bbl)
5.00	Mud 100m (oil spots)	0.05

	Choke (inches)	Pressure (psig)	Gas Rate (Mcf/d)

\* Recovery from multiple tests





**TRILOBITE  
TESTING, INC.**

# DRILL STEM TEST REPORT

**FLUID SUMMARY**

O'Brien Resources, LLC

**25 17s 29w Lane, Ks**

PO Box 6149  
Shreveport, La 71136

**Schultz 25 #1**

Job Ticket: 46624

**DST#: 6**

ATTN: Kurt Talbott

Test Start: 2012.06.10 @ 09:37:00

## Mud and Cushion Information

Mud Type: Gel Chem

Cushion Type:

Oil API:

0 deg API

Mud Weight: 9.00 lb/gal

Cushion Length:

ft

Water Salinity:

0 ppm

Viscosity: 54.00 sec/qt

Cushion Volume:

bbbl

Water Loss: 7.60 in<sup>3</sup>

Gas Cushion Type:

Resistivity: ohm.m

Gas Cushion Pressure:

psig

Salinity: 2000.00 ppm

Filter Cake: 1.00 inches

## Recovery Information

Recovery Table

Length ft	Description	Volume bbl
5.00	Mud 100m (oil spots)	0.050

Total Length: 5.00 ft      Total Volume: 0.050 bbl

Num Fluid Samples: 0

Num Gas Bombs: 0

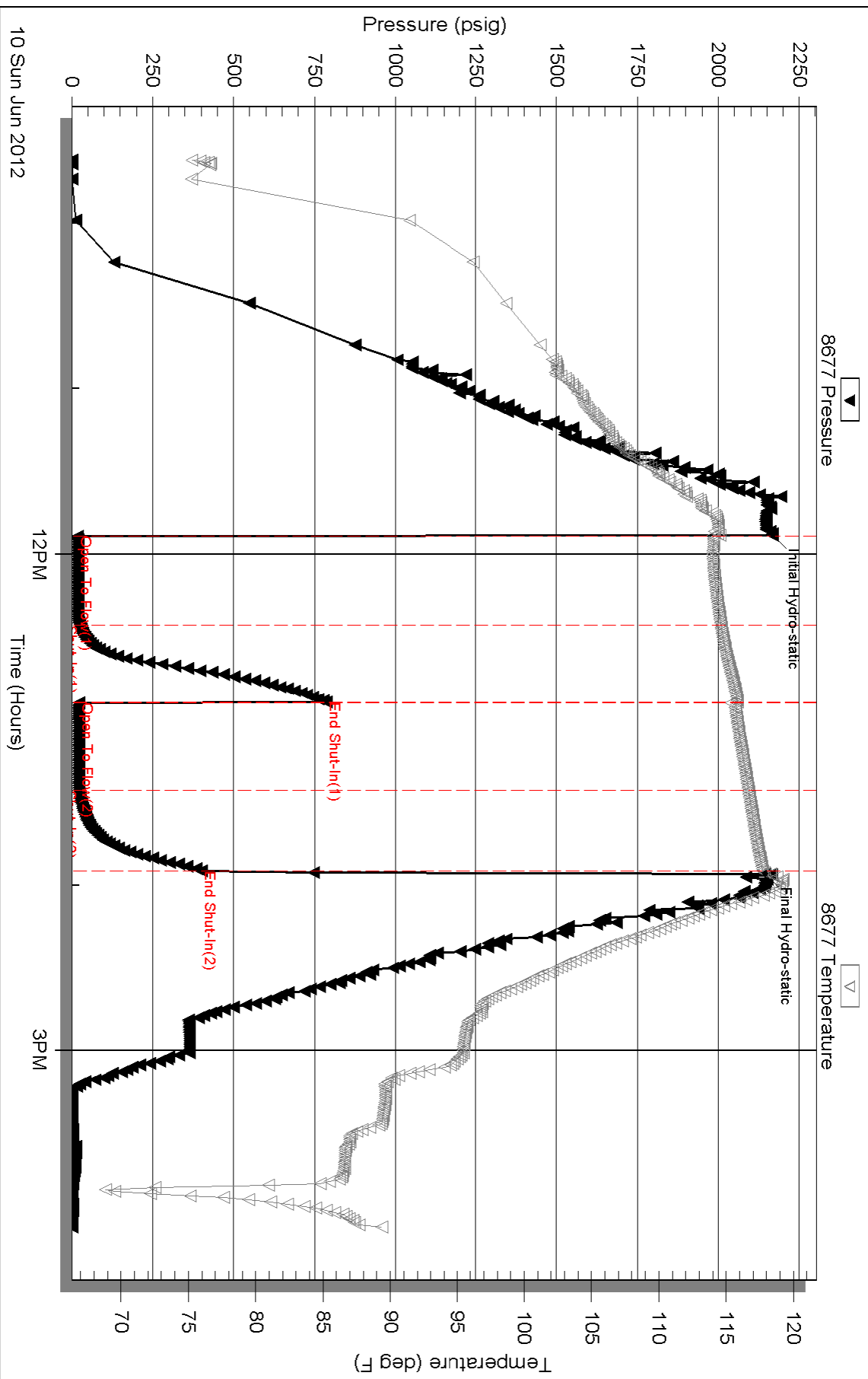
Serial #:

Laboratory Name:

Laboratory Location:

Recovery Comments:

# Pressure vs. Time

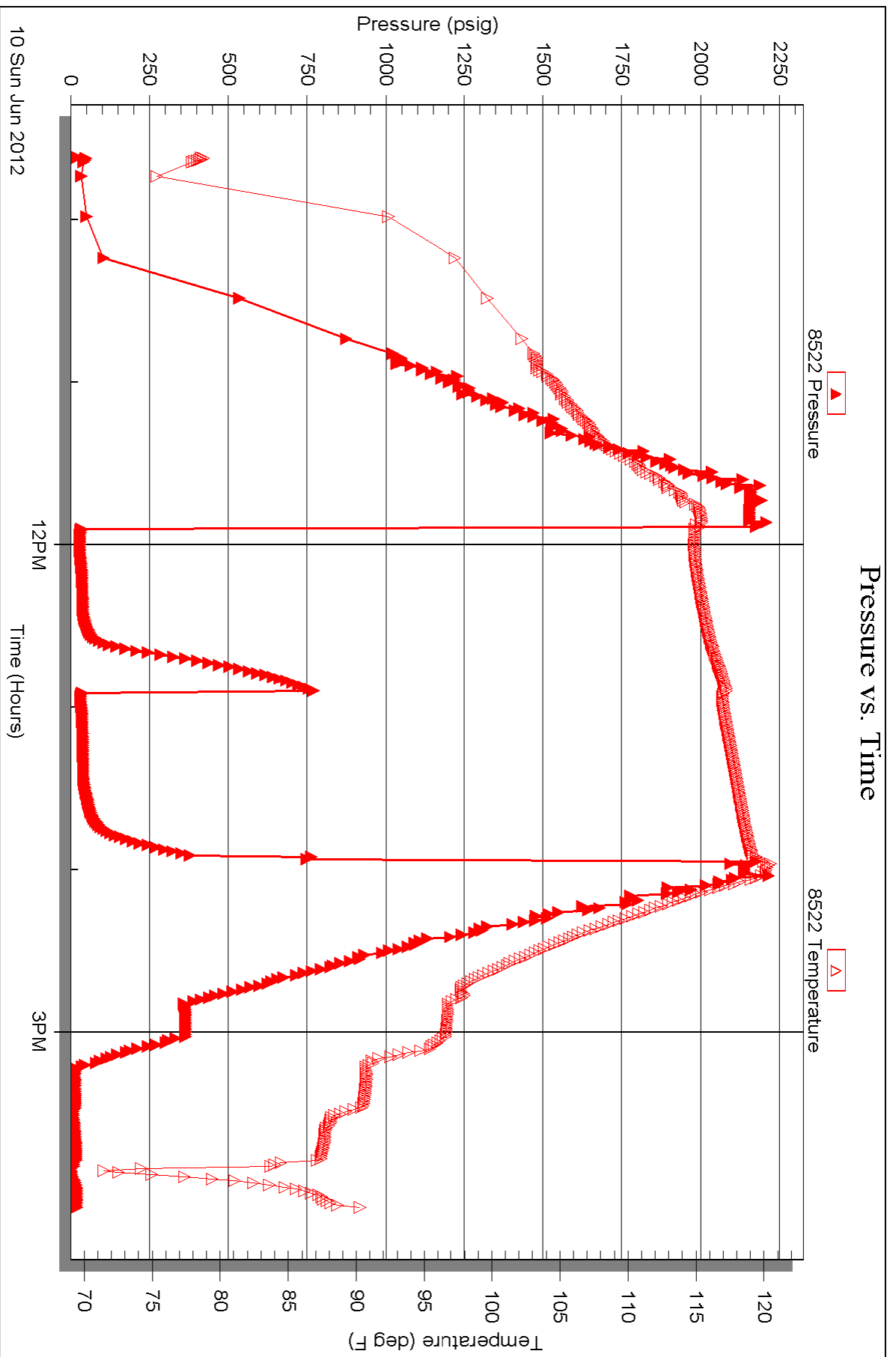


Serial #: 8522

Outside O'Brien Resources, LLC

Schultz 25 #1

DST Test Number: 6





**TRILOBITE  
TESTING, INC.**

# DRILL STEM TEST REPORT

O'Brien Resources, LLC

25 17s 29w Lane, Ks

PO Box 6149  
Shreveport, La 71136

Schultz 25 #1

Job Ticket: 46623

DST#: 5

ATTN: Kurt Talbott

Test Start: 2012.06.09 @ 13:16:30

## GENERAL INFORMATION:

Formation: **Pawnee, Ft Scott, My**

Deviated: No Whipstock: ft (KB)

Time Tool Opened: 16:08:15

Time Test Ended: 21:21:45

Test Type: Conventional Bottom Hole (Reset)

Tester: Bradley Walter

Unit No: 53

Interval: **4430.00 ft (KB) To 4510.00 ft (KB) (TVD)**

Reference Elevations: 2797.00 ft (KB)

Total Depth: 4510.00 ft (KB) (TVD)

2786.00 ft (CF)

Hole Diameter: 7.88 inches Hole Condition: Good

KB to GR/CF: 11.00 ft

Serial #: **8677**

Inside

Press @ Run Depth: 56.10 psig @ 4431.00 ft (KB)

Capacity: 8000.00 psig

Start Date: 2012.06.09

End Date:

2012.06.09

Last Calib.:

2012.06.09

Start Time: 13:16:35

End Time:

21:21:44

Time On Btm:

2012.06.09 @ 16:08:00

Time Off Btm:

2012.06.09 @ 18:55:15

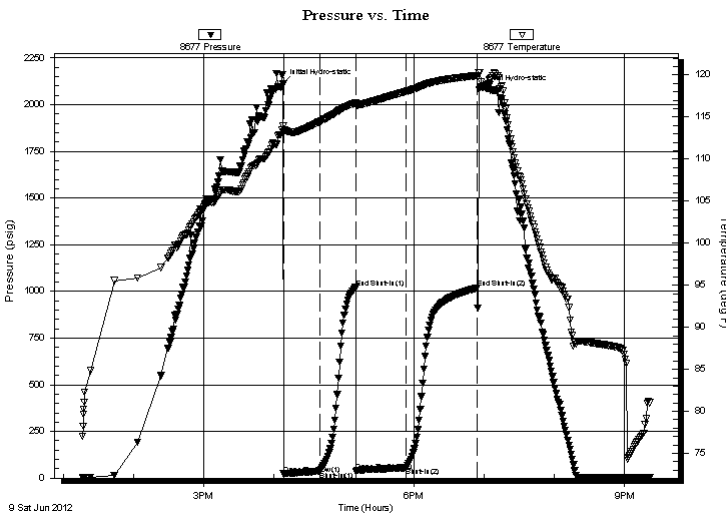
TEST COMMENT: IF: 2" Blow.

IS: No return.

FF: BOB @ 15 min.

FS: No return.

## PRESSURE SUMMARY



Time (Min.)	Pressure (psig)	Temp (deg F)	Annotation
0	2111.74	113.92	Initial Hydro-static
1	22.51	113.29	Open To Flow (1)
32	36.95	114.44	Shut-In(1)
62	1020.68	116.67	End Shut-In(1)
63	37.55	116.42	Open To Flow (2)
105	56.10	118.03	Shut-In(2)
166	1018.23	119.91	End Shut-In(2)
168	2080.91	120.28	Final Hydro-static

## Recovery

Length (ft)	Description	Volume (bbl)
50.00	ocm 10o 90m	0.50

\* Recovery from multiple tests

## Gas Rates

Choke (inches)	Pressure (psig)	Gas Rate (Mcf/d)



**TRILOBITE TESTING, INC.**

## DRILL STEM TEST REPORT

O'Brien Resources, LLC

25 17s 29w Lane, Ks

PO Box 6149  
Shreveport, La 71136

Schultz 25 #1

Job Ticket: 46623

DST#: 5

ATTN: Kurt Talbott

Test Start: 2012.06.09 @ 13:16:30

### GENERAL INFORMATION:

Formation: **Pawnee, Ft Scott, My**

Deviated: No Whipstock: ft (KB)

Time Tool Opened: 16:08:15

Time Test Ended: 21:21:45

Test Type: Conventional Bottom Hole (Reset)

Tester: Bradley Walter

Unit No: 53

Interval: **4430.00 ft (KB) To 4510.00 ft (KB) (TVD)**

Reference Elevations: 2797.00 ft (KB)

Total Depth: 4510.00 ft (KB) (TVD)

2786.00 ft (CF)

Hole Diameter: 7.88 inches Hole Condition: Good

KB to GR/CF: 11.00 ft

Serial #: **8522** Outside

Press@RunDepth: psig @ 4431.00 ft (KB)

Capacity: 8000.00 psig

Start Date: 2012.06.09

End Date: 2012.06.09

Last Calib.: 2012.06.09

Start Time: 13:16:35

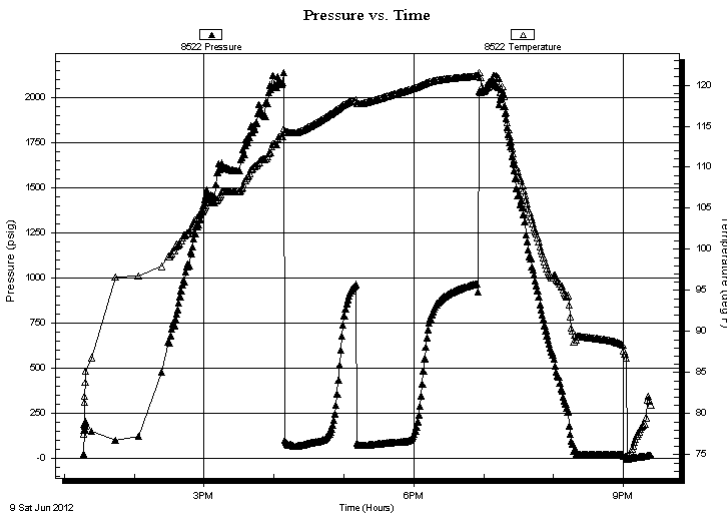
End Time: 21:23:14

Time On Btm:

Time Off Btm:

TEST COMMENT: IF: 2" Blow.  
IS: No return.  
FF: BOB @ 15 min.  
FS: No return.

### PRESSURE SUMMARY



Time (Min.)	Pressure (psig)	Temp (deg F)	Annotation

### Recovery

Length (ft)	Description	Volume (bbl)
50.00	ocm 10o 90m	0.50

### Gas Rates

Choke (inches)	Pressure (psig)	Gas Rate (Mcf/d)

\* Recovery from multiple tests



**TRILOBITE  
TESTING, INC.**

# DRILL STEM TEST REPORT

**FLUID SUMMARY**

O'Brien Resources, LLC

**25 17s 29w Lane, Ks**

PO Box 6149  
Shreveport, La 71136

**Schultz 25 #1**

Job Ticket: 46623

**DST#: 5**

ATTN: Kurt Talbott

Test Start: 2012.06.09 @ 13:16:30

## Mud and Cushion Information

Mud Type: Gel Chem

Cushion Type:

Oil API:

0 deg API

Mud Weight: 9.00 lb/gal

Cushion Length:

ft

Water Salinity:

0 ppm

Viscosity: 52.00 sec/qt

Cushion Volume:

bbbl

Water Loss: 7.60 in<sup>3</sup>

Gas Cushion Type:

Resistivity: ohm.m

Gas Cushion Pressure:

psig

Salinity: 1800.00 ppm

Filter Cake: 1.00 inches

## Recovery Information

Recovery Table

Length ft	Description	Volume bbl
50.00	ocm 10o 90m	0.497

Total Length: 50.00 ft      Total Volume: 0.497 bbl

Num Fluid Samples: 0

Num Gas Bombs: 0

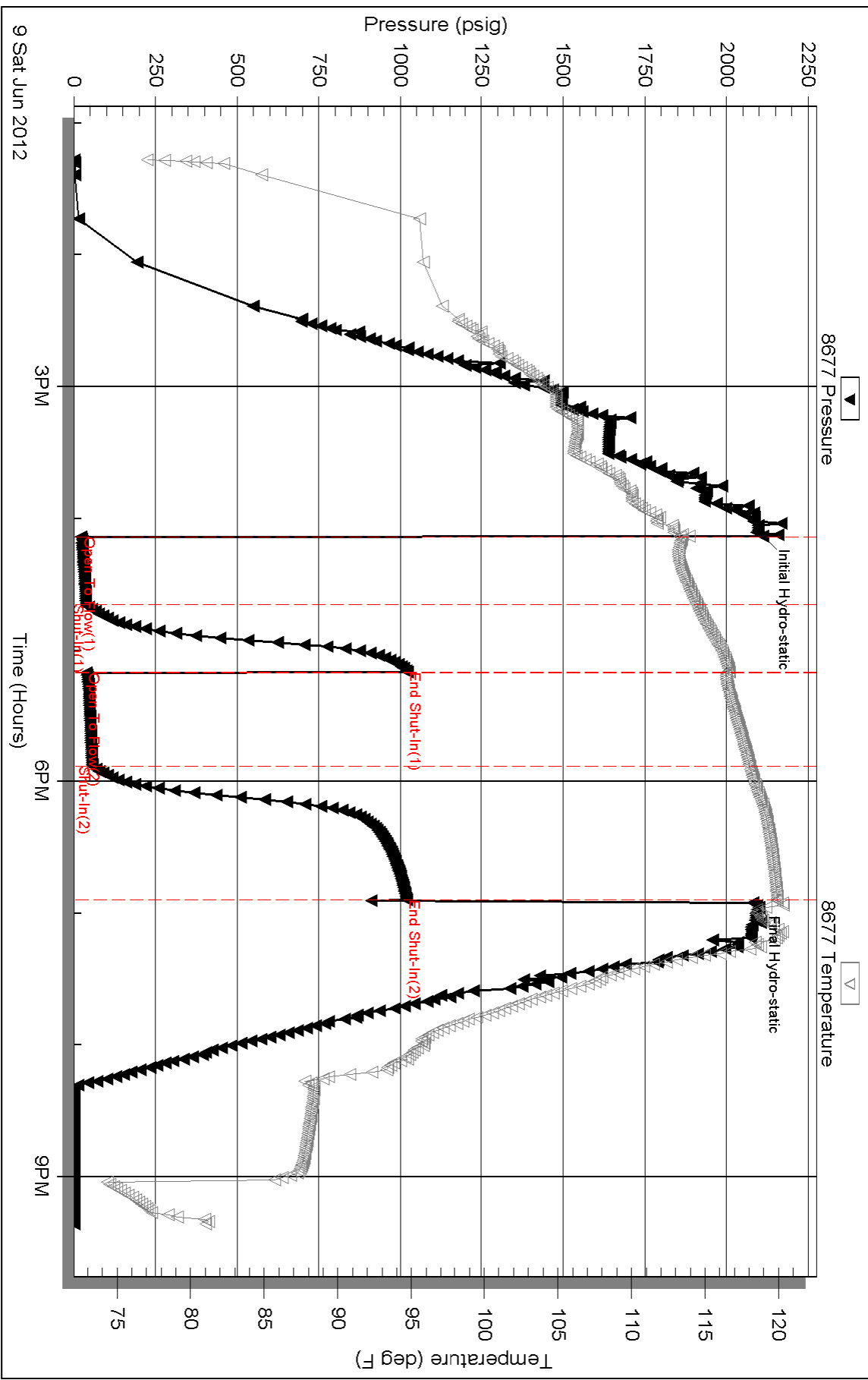
Serial #:

Laboratory Name:

Laboratory Location:

Recovery Comments:

### Pressure vs. Time

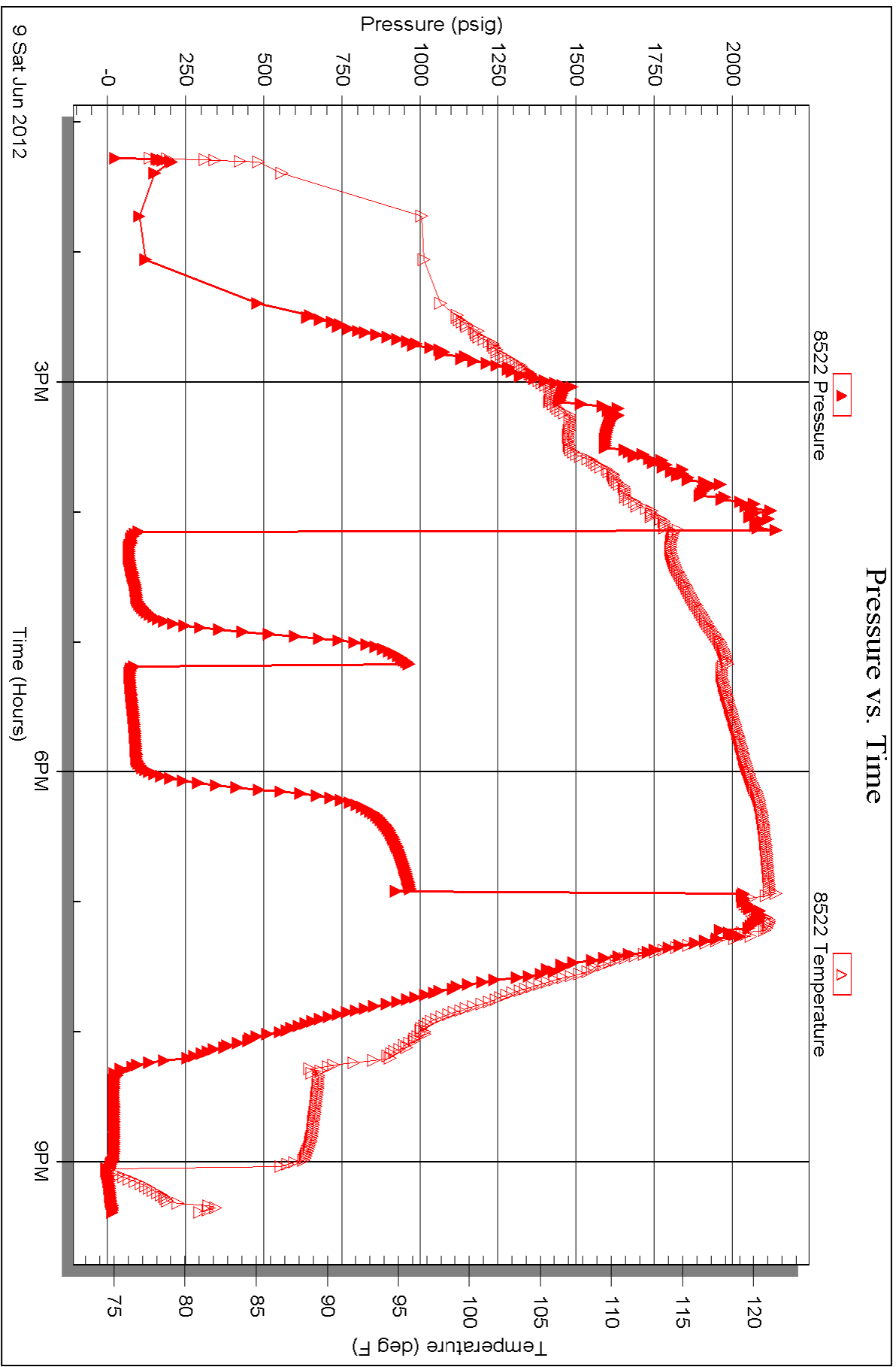


Serial #: 8522

Outside O'Brien Resources, LLC

Schultz 25 #1

DST Test Number: 5







**TRILOBITE TESTING, INC.**

# DRILL STEM TEST REPORT

O'Brien Resources, LLC

25 17s 29w Lane, Ks

PO Box 6149  
Shreveport, La 71136

Schultz 25 #1

Job Ticket: 46622

DST#: 4

ATTN: Kurt Talbott

Test Start: 2012.06.08 @ 17:16:00

## GENERAL INFORMATION:

Formation: **Altamont**

Deviated: No Whipstock: ft (KB)

Time Tool Opened: 19:39:15

Time Test Ended: 23:35:15

Test Type: Conventional Bottom Hole (Reset)

Tester: Bradley Walter

Unit No: 53

Interval: **4388.00 ft (KB) To 4435.00 ft (KB) (TVD)**

Reference Elevations: 2797.00 ft (KB)

Total Depth: 4387.00 ft (KB) (TVD)

2786.00 ft (CF)

Hole Diameter: 7.88 inches Hole Condition: Good

KB to GR/CF: 11.00 ft

Serial #: **8677** Inside

Press @ Run Depth: 21.23 psig @ 4389.00 ft (KB)

Capacity: 8000.00 psig

Start Date: 2012.06.08

End Date:

2012.06.08

Last Calib.:

2012.06.08

Start Time: 17:16:05

End Time:

23:35:14

Time On Btm:

2012.06.08 @ 19:38:45

Time Off Btm:

2012.06.08 @ 21:39:45

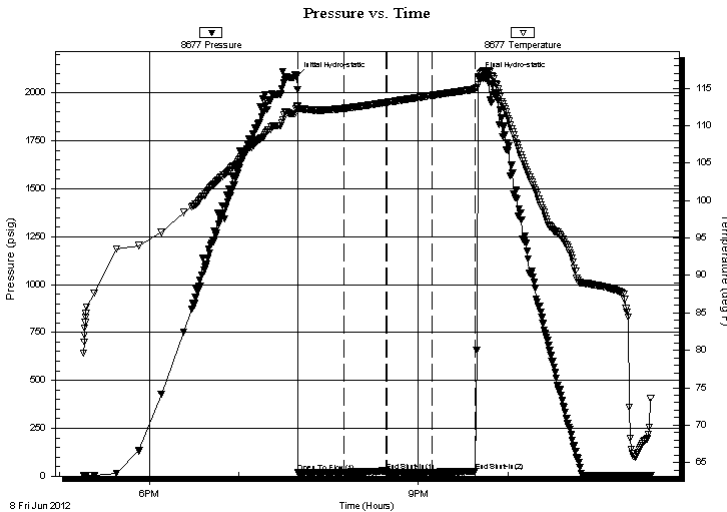
TEST COMMENT: IF: Surface blow, died @ 5 min.

IS: No return.

FF: No blow.

FS: No return.

## PRESSURE SUMMARY



Time (Min.)	Pressure (psig)	Temp (deg F)	Annotation
0	2086.75	112.58	Initial Hydro-static
1	20.42	112.13	Open To Flow (1)
31	20.83	112.30	Shut-In(1)
60	27.02	113.10	End Shut-In(1)
60	20.07	113.11	Open To Flow (2)
91	21.23	114.04	Shut-In(2)
120	24.99	114.87	End Shut-In(2)
121	2085.69	115.49	Final Hydro-static

## Recovery

Length (ft)	Description	Volume (bbl)
3.00	Mud 100m (oil spots)	0.03

## Gas Rates

Choke (inches)	Pressure (psig)	Gas Rate (Mcf/d)

\* Recovery from multiple tests





**TRILOBITE  
TESTING, INC.**

# DRILL STEM TEST REPORT

**FLUID SUMMARY**

O'Brien Resources, LLC

**25 17s 29w Lane, Ks**

PO Box 6149  
Shreveport, La 71136

**Schultz 25 #1**

Job Ticket: 46622

**DST#: 4**

ATTN: Kurt Talbott

Test Start: 2012.06.08 @ 17:16:00

## Mud and Cushion Information

Mud Type: Gel Chem

Cushion Type:

Oil API:

0 deg API

Mud Weight: 9.00 lb/gal

Cushion Length:

ft

Water Salinity:

0 ppm

Viscosity: 54.00 sec/qt

Cushion Volume:

bbbl

Water Loss: 7.59 in<sup>3</sup>

Gas Cushion Type:

Resistivity: ohm.m

Gas Cushion Pressure:

psig

Salinity: 1600.00 ppm

Filter Cake: 1.00 inches

## Recovery Information

Recovery Table

Length ft	Description	Volume bbl
3.00	Mud 100m (oil spots)	0.030

Total Length: 3.00 ft      Total Volume: 0.030 bbl

Num Fluid Samples: 0

Num Gas Bombs: 0

Serial #:

Laboratory Name:

Laboratory Location:

Recovery Comments:

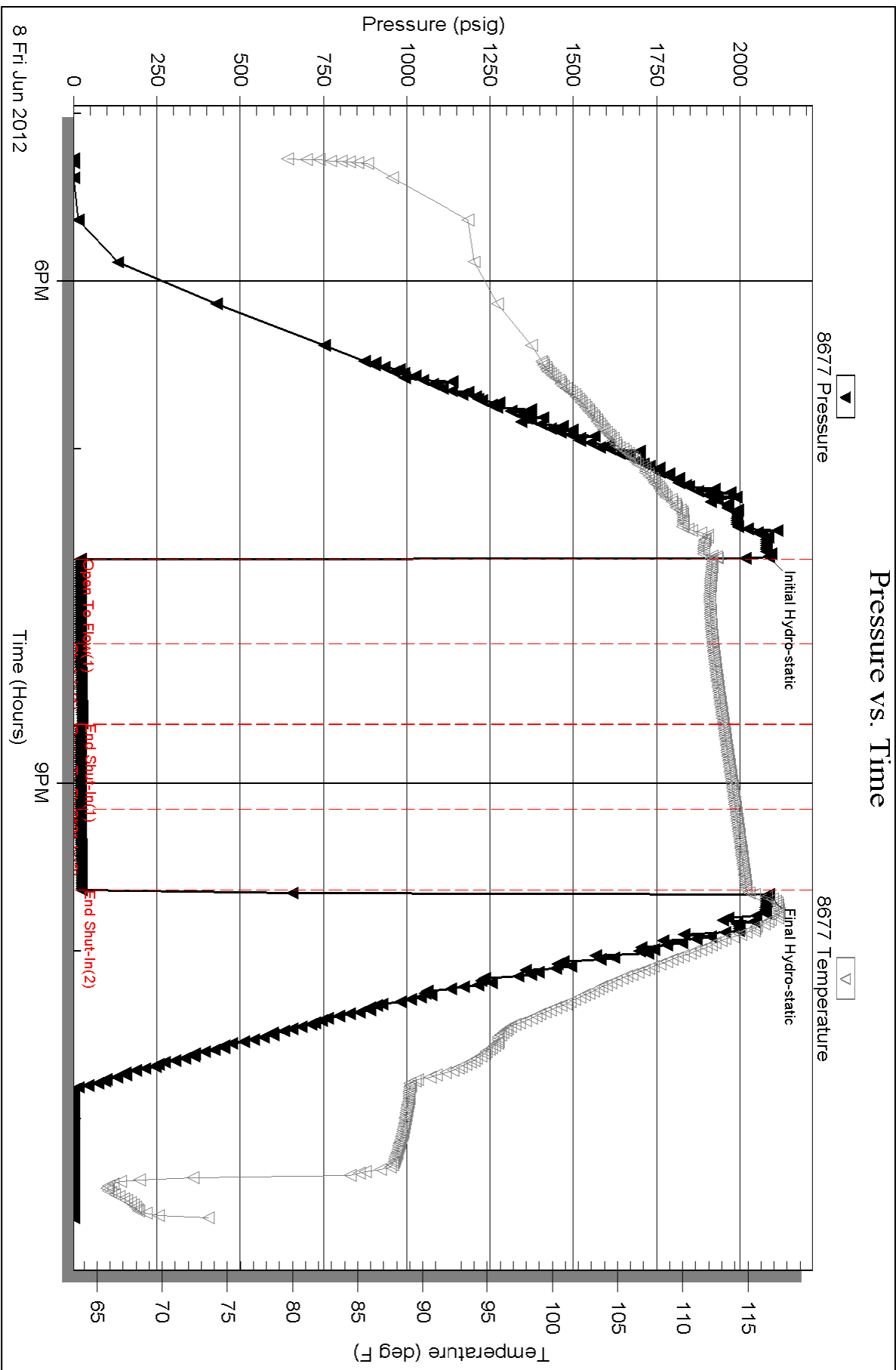
Serial #: 8677

Inside

O'Brien Resources, LLC

Schultz 25 #1

DST Test Number: 4

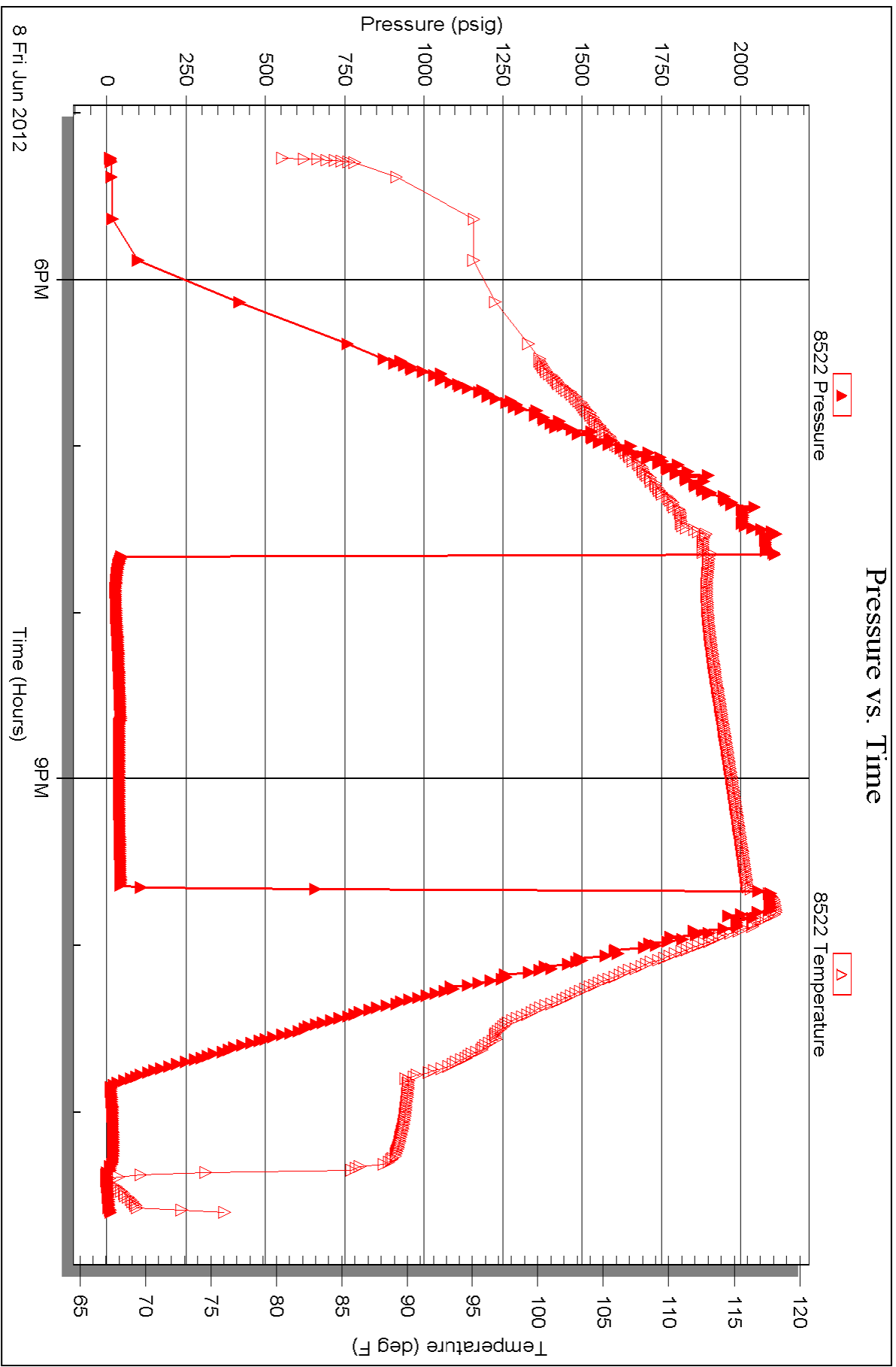


Serial #: 8522

Outside O'Brien Resources, LLC

Schultz 25 #1

DST Test Number: 4





**TRILOBITE TESTING, INC.**

**DRILL STEM TEST REPORT**

O'Brien Resources, LLC  
 PO Box 6149  
 Shreveport, La 71136  
 ATTN: Kurt Talbott

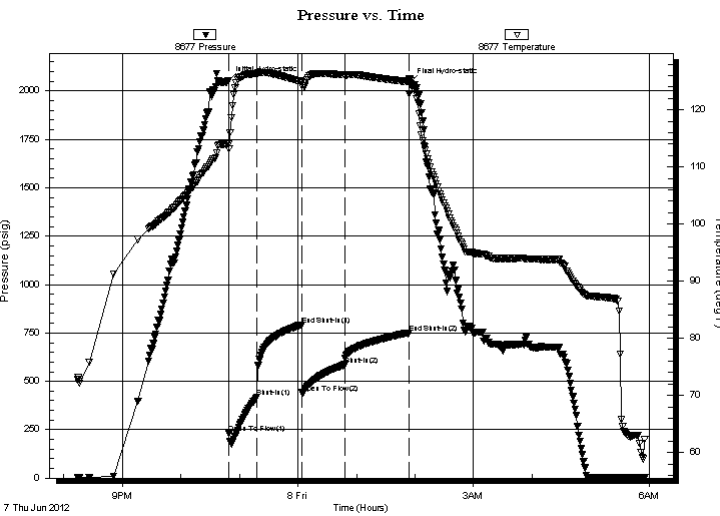
**25 17s 29w Lane, Ks**  
**Schultz 25 #1**  
 Job Ticket: 46621      **DST#: 3**  
 Test Start: 2012.06.07 @ 20:14:00

**GENERAL INFORMATION:**

Formation: **Marmaton - Pleasento**  
 Deviated: No Whipstock: ft (KB)  
 Time Tool Opened: 22:49:30  
 Time Test Ended: 05:55:30  
 Interval: **4302.00 ft (KB) To 4370.00 ft (KB) (TVD)**  
 Total Depth: 4370.00 ft (KB) (TVD)  
 Hole Diameter: 7.88 inches Hole Condition: Good  
 Test Type: Conventional Bottom Hole (Reset)  
 Tester: Bradley Walter  
 Unit No: 53  
 Reference Elevations: 2797.00 ft (KB)  
 2786.00 ft (CF)  
 KB to GR/CF: 11.00 ft

**Serial #: 8677      Inside**  
 Press @ Run Depth: 585.74 psig @ 4303.00 ft (KB)      Capacity: 8000.00 psig  
 Start Date: 2012.06.07      End Date: 2012.06.08      Last Calib.: 2012.06.08  
 Start Time: 20:14:05      End Time: 05:55:30      Time On Btm: 2012.06.07 @ 22:49:15  
 Time Off Btm: 2012.06.08 @ 01:54:30

**TEST COMMENT:** IF: BOB @ 40 sec.  
 IS: BOB @ 10 min.  
 FF: BOB @ 90 sec.  
 FS: 8" return.



**PRESSURE SUMMARY**

Time (Min.)	Pressure (psig)	Temp (deg F)	Annotation
0	2054.89	113.99	Initial Hydro-static
1	230.87	113.14	Open To Flow (1)
29	416.71	126.33	Shut-In(1)
75	791.77	124.93	End Shut-In(1)
75	441.32	124.77	Open To Flow (2)
119	585.74	126.10	Shut-In(2)
185	747.99	124.89	End Shut-In(2)
186	2043.49	125.46	Final Hydro-static

**Recovery**

Length (ft)	Description	Volume (bbl)
120.00	gmco 10g 20m 70o	1.19
1760.00	go 40g 60o	17.51
0.00	580 GIP (very windy more probable)	0.00

\* Recovery from multiple tests

**Gas Rates**

Choke (inches)	Pressure (psig)	Gas Rate (Mcf/d)



**TRILOBITE  
TESTING, INC.**

# DRILL STEM TEST REPORT

**FLUID SUMMARY**

O'Brien Resources, LLC

**25 17s 29w Lane, Ks**

PO Box 6149  
Shreveport, La 71136

**Schultz 25 #1**

Job Ticket: 46621

**DST#: 3**

ATTN: Kurt Talbott

Test Start: 2012.06.07 @ 20:14:00

## Mud and Cushion Information

Mud Type: Gel Chem  
Mud Weight: 9.00 lb/gal  
Viscosity: 48.00 sec/qt  
Water Loss: 7.99 in<sup>3</sup>  
Resistivity: ohm.m  
Salinity: 1400.00 ppm  
Filter Cake: 1.00 inches

Cushion Type:  
Cushion Length: ft  
Cushion Volume: bbl  
Gas Cushion Type:  
Gas Cushion Pressure: psig

Oil API: 39 deg API  
Water Salinity: 0 ppm

## Recovery Information

Recovery Table

Length ft	Description	Volume bbl
120.00	gmco 10g 20m 70o	1.194
1760.00	go 40g 60o	17.507
0.00	580 GIP (very w indy more probable)	0.000

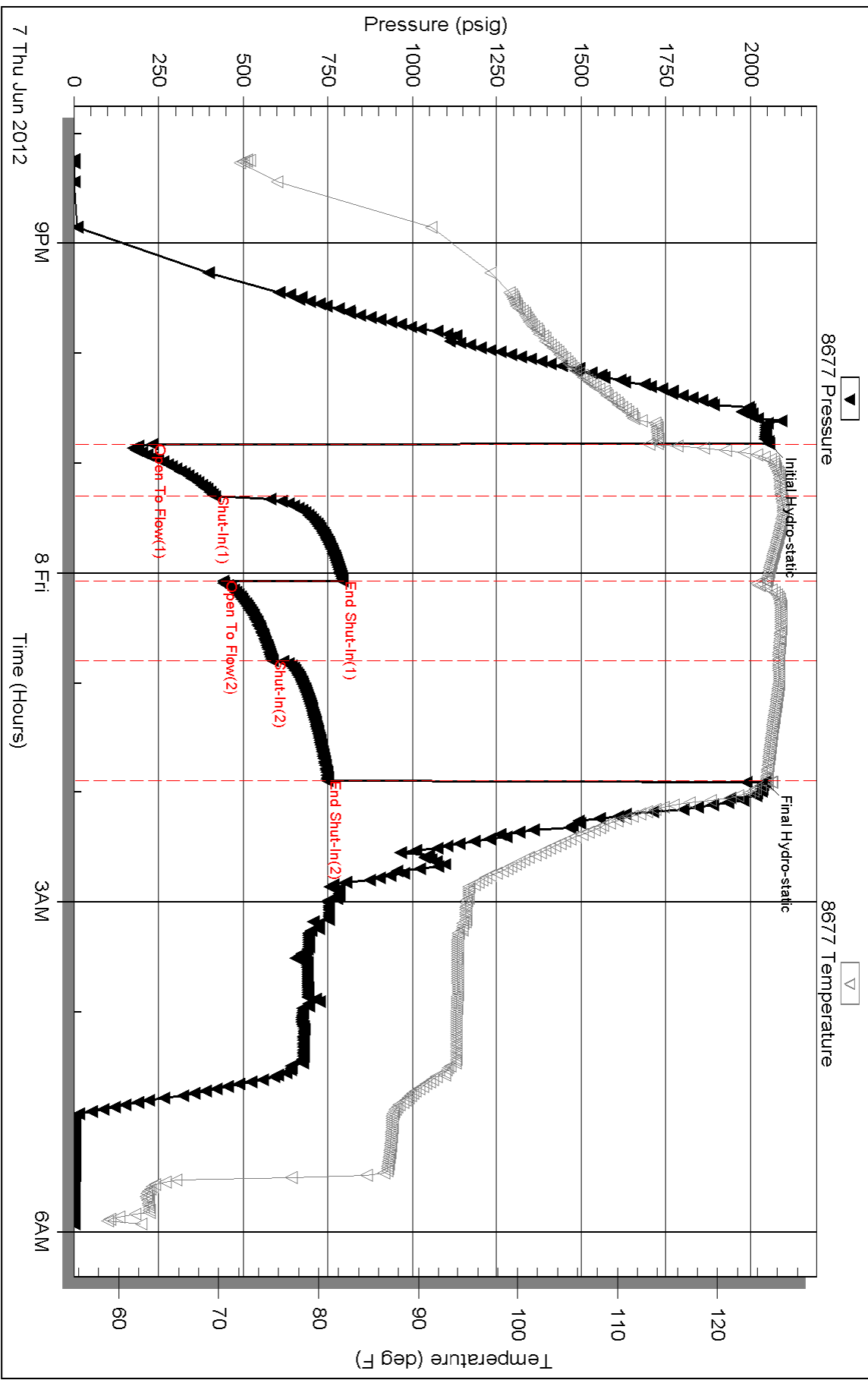
Total Length: 1880.00 ft      Total Volume: 18.701 bbl

Num Fluid Samples: 0      Num Gas Bombs: 0      Serial #:

Laboratory Name:      Laboratory Location:

Recovery Comments: some mud cut oil noticed at end of reverse circulation

### Pressure vs. Time







**TRILOBITE  
TESTING, INC.**

# DRILL STEM TEST REPORT

O'Brien Resources, LLC

25 17s 29w Lane, Ks

PO Box 6149  
Shreveport, La 71136

Schultz 25 #1

Job Ticket: 46620

DST#: 2

ATTN: Kurt Talbott

Test Start: 2012.06.06 @ 22:26:00

## GENERAL INFORMATION:

Formation: **LKC "K"**

Deviated: No Whipstock: ft (KB)

Time Tool Opened: 00:14:45

Time Test Ended: 05:21:45

Test Type: Conventional Bottom Hole (Reset)

Tester: Bradley Walter

Unit No: 53

Interval: **4241.00 ft (KB) To 4270.00 ft (KB) (TVD)**

Reference Elevations: 2797.00 ft (KB)

Total Depth: 4270.00 ft (KB) (TVD)

2786.00 ft (CF)

Hole Diameter: 7.88 inches Hole Condition: Good

KB to GR/CF: 11.00 ft

**Serial #: 8677 Outside**

Press @ Run Depth: 48.88 psig @ 4242.00 ft (KB)

Capacity: 8000.00 psig

Start Date: 2012.06.06

End Date:

2012.06.07

Last Calib.:

2012.06.07

Start Time: 22:56:05

End Time:

05:51:44

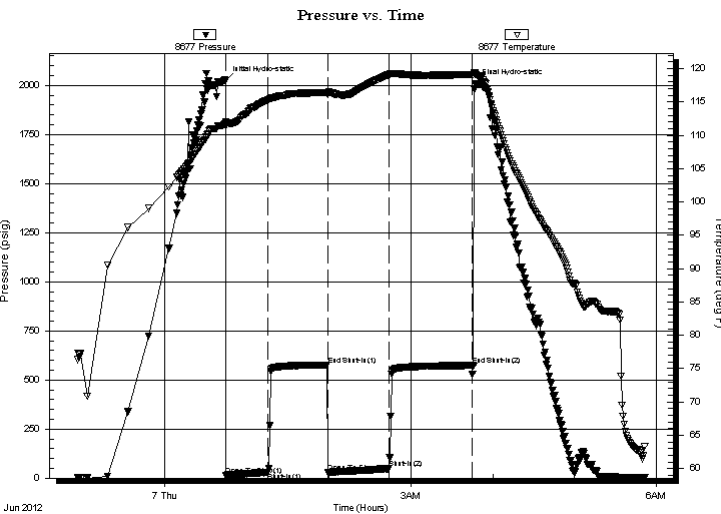
Time On Btm:

2012.06.07 @ 00:44:30

Time Off Btm:

2012.06.07 @ 03:47:15

TEST COMMENT: IF: 1" blow.  
IS: No return.  
FF: 1" blow.  
FS: No return.



## PRESSURE SUMMARY

Time (Min.)	Pressure (psig)	Temp (deg F)	Annotation
0	2026.25	112.07	Initial Hydro-static
1	15.42	111.43	Open To Flow (1)
31	28.83	115.30	Shut-In(1)
75	576.28	116.46	End Shut-In(1)
75	29.11	116.11	Open To Flow (2)
120	48.88	119.10	Shut-In(2)
181	573.91	119.11	End Shut-In(2)
183	2011.32	119.20	Final Hydro-static

## Recovery

Length (ft)	Description	Volume (bbl)
90.00	w cm 30w 70m (oil spots)	0.90

\* Recovery from multiple tests

## Gas Rates

Choke (inches)	Pressure (psig)	Gas Rate (Mcf/d)



**TRILOBITE  
TESTING, INC.**

# DRILL STEM TEST REPORT

**FLUID SUMMARY**

O'Brien Resources, LLC

**25 17s 29w Lane, Ks**

PO Box 6149  
Shreveport, La 71136

**Schultz 25 #1**

Job Ticket: 46620

**DST#: 2**

ATTN: Kurt Talbott

Test Start: 2012.06.06 @ 22:26:00

## Mud and Cushion Information

Mud Type: Gel Chem

Cushion Type:

Oil API:

0 deg API

Mud Weight: 9.00 lb/gal

Cushion Length:

ft

Water Salinity:

23000 ppm

Viscosity: 65.00 sec/qt

Cushion Volume:

bbbl

Water Loss: 8.39 in<sup>3</sup>

Gas Cushion Type:

Resistivity: ohm.m

Gas Cushion Pressure:

psig

Salinity: 1800.00 ppm

Filter Cake: 1.00 inches

## Recovery Information

Recovery Table

Length ft	Description	Volume bbl
90.00	w cm 30w 70m (oil spots)	0.895

Total Length: 90.00 ft      Total Volume: 0.895 bbl

Num Fluid Samples: 0

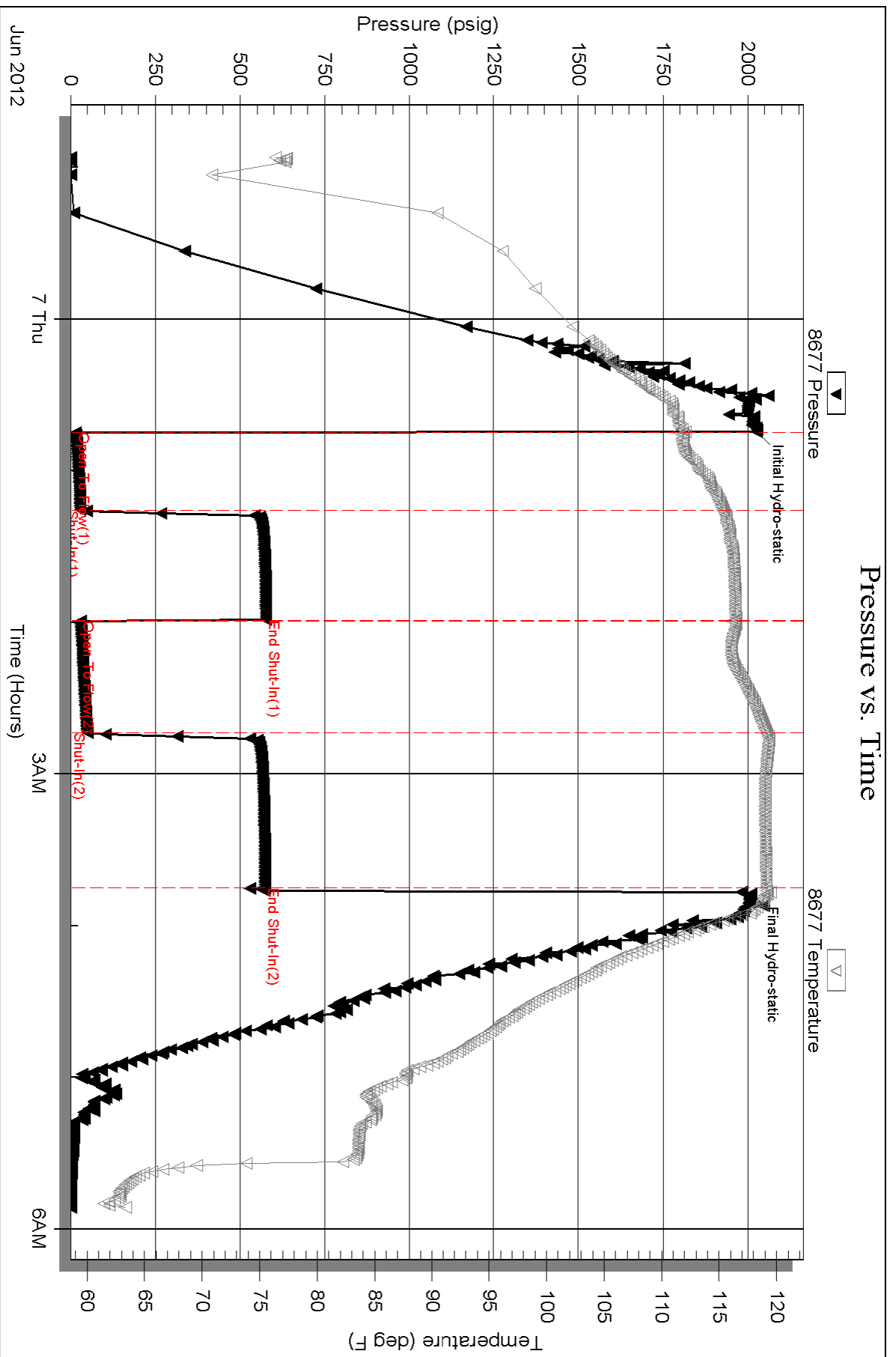
Num Gas Bombs: 0

Serial #:

Laboratory Name:

Laboratory Location:

Recovery Comments: rw is .344 @ 58 = 23,000ppm





**TRILOBITE  
TESTING, INC.**

# DRILL STEM TEST REPORT

**FLUID SUMMARY**

O'Brien Resources, LLC

**25 17s 29w Lane, Ks**

PO Box 6149  
Shreveport, La 71136

**Schultz 25 #1**

Job Ticket: 46619

**DST#: 1**

ATTN: Kurt Talbott

Test Start: 2012.06.06 @ 00:22:00

## Mud and Cushion Information

Mud Type: Gel Chem

Cushion Type:

Oil API:

0 deg API

Mud Weight: 9.00 lb/gal

Cushion Length:

ft

Water Salinity:

0 ppm

Viscosity: 48.00 sec/qt

Cushion Volume:

bbbl

Water Loss: 7.98 in<sup>3</sup>

Gas Cushion Type:

Resistivity: ohm.m

Gas Cushion Pressure:

psig

Salinity: 1600.00 ppm

Filter Cake: 1.00 inches

## Recovery Information

Recovery Table

Length ft	Description	Volume bbl
35.00	Mud 100m (oil puddle on top)	0.348

Total Length: 35.00 ft      Total Volume: 0.348 bbl

Num Fluid Samples: 0

Num Gas Bombs: 0

Serial #:

Laboratory Name:

Laboratory Location:

Recovery Comments:

