



DRILL STEM TEST REPORT

Prepared For: **Brito Oil Company Inc.**

1700 N Waterfront PKWY
BLDG 300 Suite C
Wichita KS 67206

ATTN: Phil Askey

Fairleigh 'D' #1-7

7-15s-32w Logan,KS

Start Date: 2012.04.29 @ 20:20:00

End Date: 2012.04.30 @ 03:17:30

Job Ticket #: 45953 DST #: 1

Trilobite Testing, Inc

PO Box 362 Hays, KS 67601

ph: 785-625-4778 fax: 785-625-5620

Printed: 2012.05.09 @ 09:37:17

Brito Oil Company Inc.

7-15s-32w Logan,KS

Fairleigh 'D' #1-7

DST # 1

Kansas City "E"

2012.04.29



**TRILOBITE
TESTING, INC.**

DRILL STEM TEST REPORT

Brito Oil Company Inc.

7-15s-32w Logan,KS

1700 N Waterfront PKWY
BLDG 300 Suite C
Wichita KS 67206
ATTN: Phil Askey

Fairleigh 'D' #1-7

Job Ticket: 45953

DST#: 1

Test Start: 2012.04.29 @ 20:20:00

GENERAL INFORMATION:

Formation: **Kansas City "E"**

Deviated: No Whipstock: ft (KB)

Time Tool Opened: 22:17:45

Time Test Ended: 03:17:30

Test Type: Conventional Bottom Hole (Initial)

Tester: Jace McKinney

Unit No: 46

Interval: 3774.00 ft (KB) To 3800.00 ft (KB) (TVD)

Reference Elevations: 2637.00 ft (KB)

Total Depth: 3800.00 ft (KB) (TVD)

2631.00 ft (CF)

Hole Diameter: 7.88 inches Hole Condition: Fair

KB to GR/CF: 6.00 ft

Serial #: 8675 Inside

Press @ Run Depth: 66.73 psig @ 3775.00 ft (KB)

Capacity: 8000.00 psig

Start Date: 2012.04.29

End Date:

2012.04.30

Last Calib.: 2012.04.30

Start Time: 20:20:01

End Time:

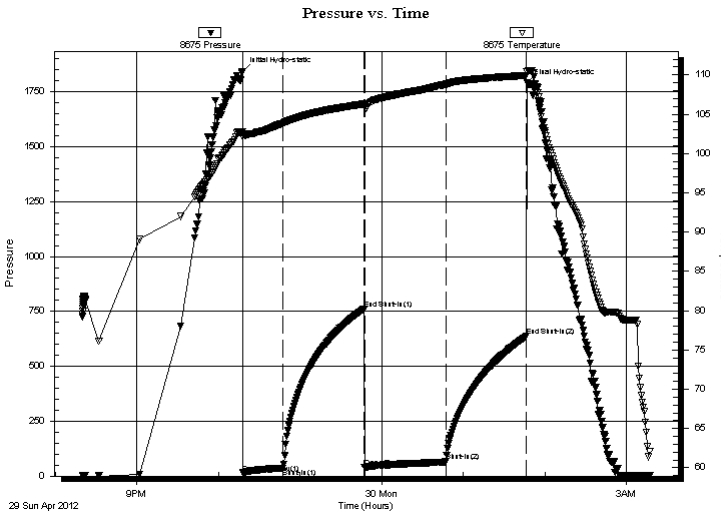
03:17:30

Time On Btm: 2012.04.29 @ 22:17:30

Time Off Btm: 2012.04.30 @ 01:46:45

TEST COMMENT: Built to 2" blow
No return blow
Built to weak surface blow
No return blow

PRESSURE SUMMARY



Time (Min.)	Pressure (psig)	Temp (deg F)	Annotation
0	1843.22	102.74	Initial Hydro-static
1	14.60	102.10	Open To Flow (1)
30	36.88	103.84	Shut-In(1)
90	760.61	106.29	End Shut-In(1)
90	40.53	105.98	Open To Flow (2)
150	66.73	108.78	Shut-In(2)
209	636.28	109.93	End Shut-In(2)
210	1789.37	110.37	Final Hydro-static

Recovery

Length (ft)	Description	Volume (bbl)
70.00	mcw 30%M 70%W	0.34
0.00	Oil spots in tool	0.00

Gas Rates

Choke (inches)	Pressure (psig)	Gas Rate (Mcf/d)



**TRILOBITE
TESTING, INC.**

DRILL STEM TEST REPORT

TOOL DIAGRAM

Brito Oil Company Inc.

7-15s-32w Logan,KS

1700 N Waterfront PKWY
BLDG 300 Suite C
Wichita KS 67206
ATTN: Phil Askey

Fairleigh 'D' #1-7

Job Ticket: 45953

DST#: 1

Test Start: 2012.04.29 @ 20:20:00

Tool Information

Drill Pipe:	Length: 3664.39 ft	Diameter: 3.80 inches	Volume: 51.40 bbl	Tool Weight: 1500.00 lb
Heavy Wt. Pipe:	Length: 0.00 ft	Diameter: 0.00 inches	Volume: 0.00 bbl	Weight set on Packer: 30000.00 lb
Drill Collar:	Length: 123.29 ft	Diameter: 2.25 inches	Volume: 0.61 bbl	Weight to Pull Loose: 60000.00 lb
			<u>Total Volume: 52.01 bbl</u>	Tool Chased 0.00 ft
Drill Pipe Above KB:	33.68 ft			String Weight: Initial 50000.00 lb
Depth to Top Packer:	3774.00 ft			Final 50000.00 lb
Depth to Bottom Packer:	ft			
Interval between Packers:	26.00 ft			
Tool Length:	46.00 ft			
Number of Packers:	2	Diameter: 6.75 inches		

Tool Comments:

Tool Description	Length (ft)	Serial No.	Position	Depth (ft)	Accum. Lengths
------------------	-------------	------------	----------	------------	----------------

Change Over Sub	1.00			3755.00	
Shut In Tool	5.00			3760.00	
Hydraulic tool	5.00			3765.00	
Packer	5.00			3770.00	20.00 Bottom Of Top Packer
Packer	4.00			3774.00	
Stubb	1.00			3775.00	
Recorder	0.00	8675	Inside	3775.00	
Recorder	0.00	8650	Outside	3775.00	
Perforations	22.00			3797.00	
Change Over Sub	0.00			3797.00	
Drill Pipe	0.00			3797.00	
Change Over Sub	0.00			3797.00	
Bullnose	3.00			3800.00	26.00 Bottom Packers & Anchor

Total Tool Length: 46.00



**TRILOBITE
TESTING, INC.**

DRILL STEM TEST REPORT

FLUID SUMMARY

Brito Oil Company Inc.

7-15s-32w Logan,KS

1700 N Waterfront PKWY
BLDG 300 Suite C
Wichita KS 67206
ATTN: Phil Askey

Fairleigh 'D' #1-7

Job Ticket: 45953

DST#: 1

Test Start: 2012.04.29 @ 20:20:00

Mud and Cushion Information

Mud Type: Gel Chem

Mud Weight: 9.00 lb/gal

Viscosity: 67.00 sec/qt

Water Loss: 7.96 in³

Resistivity: ohm.m

Salinity: 3200.00 ppm

Filter Cake: 1.00 inches

Cushion Type:

Cushion Length: ft

Cushion Volume: bbl

Gas Cushion Type:

Gas Cushion Pressure: psig

Oil API:

Water Salinity: deg API ppm

Recovery Information

Recovery Table

Length ft	Description	Volume bbl
70.00	mcw 30%M 70%W	0.344
0.00	Oil spots in tool	0.000

Total Length: 70.00 ft Total Volume: 0.344 bbl

Num Fluid Samples: 0

Num Gas Bombs: 0

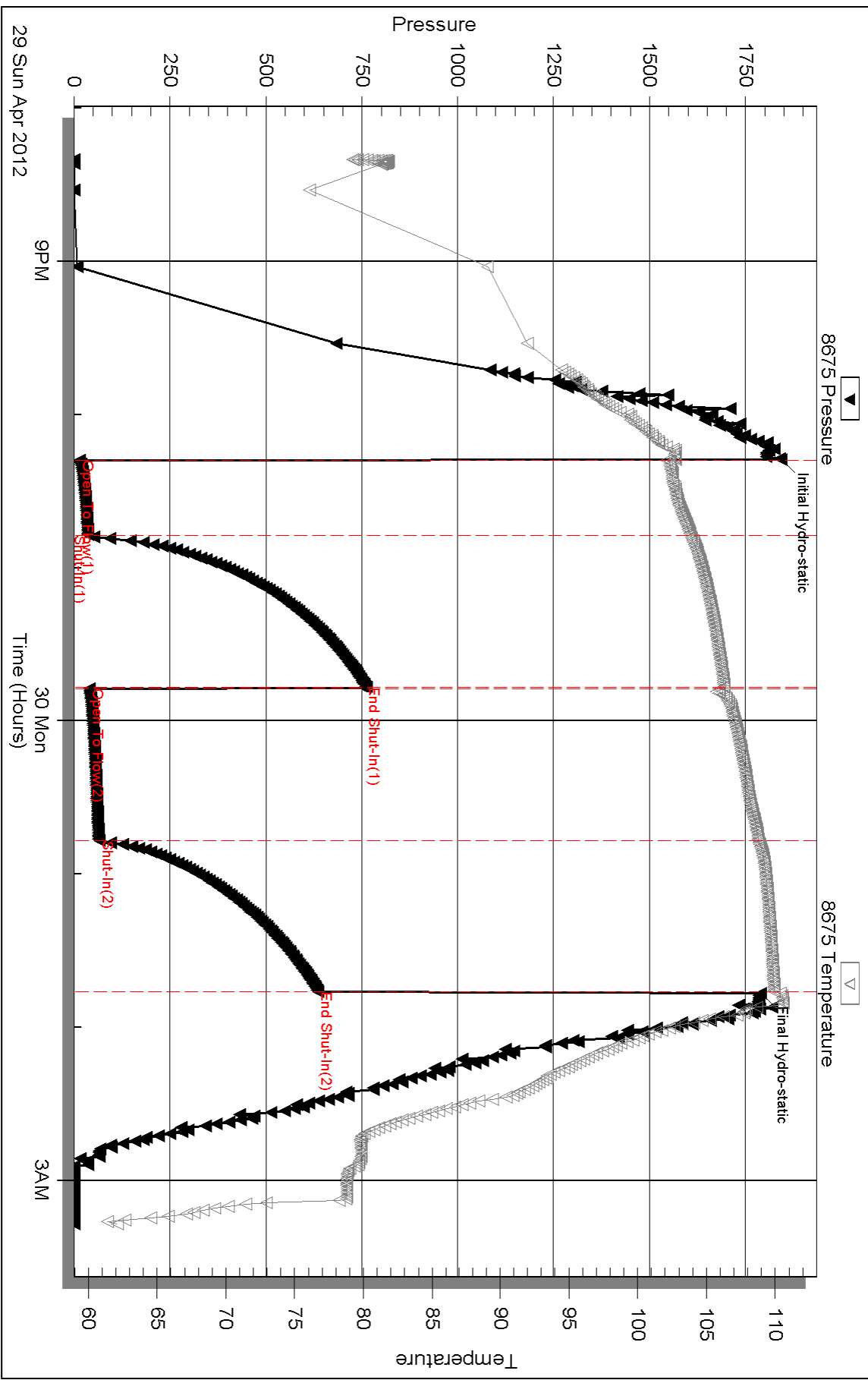
Serial #:

Laboratory Name:

Laboratory Location:

Recovery Comments: RW: .25 @ 55 F = 35,000

Pressure vs. Time

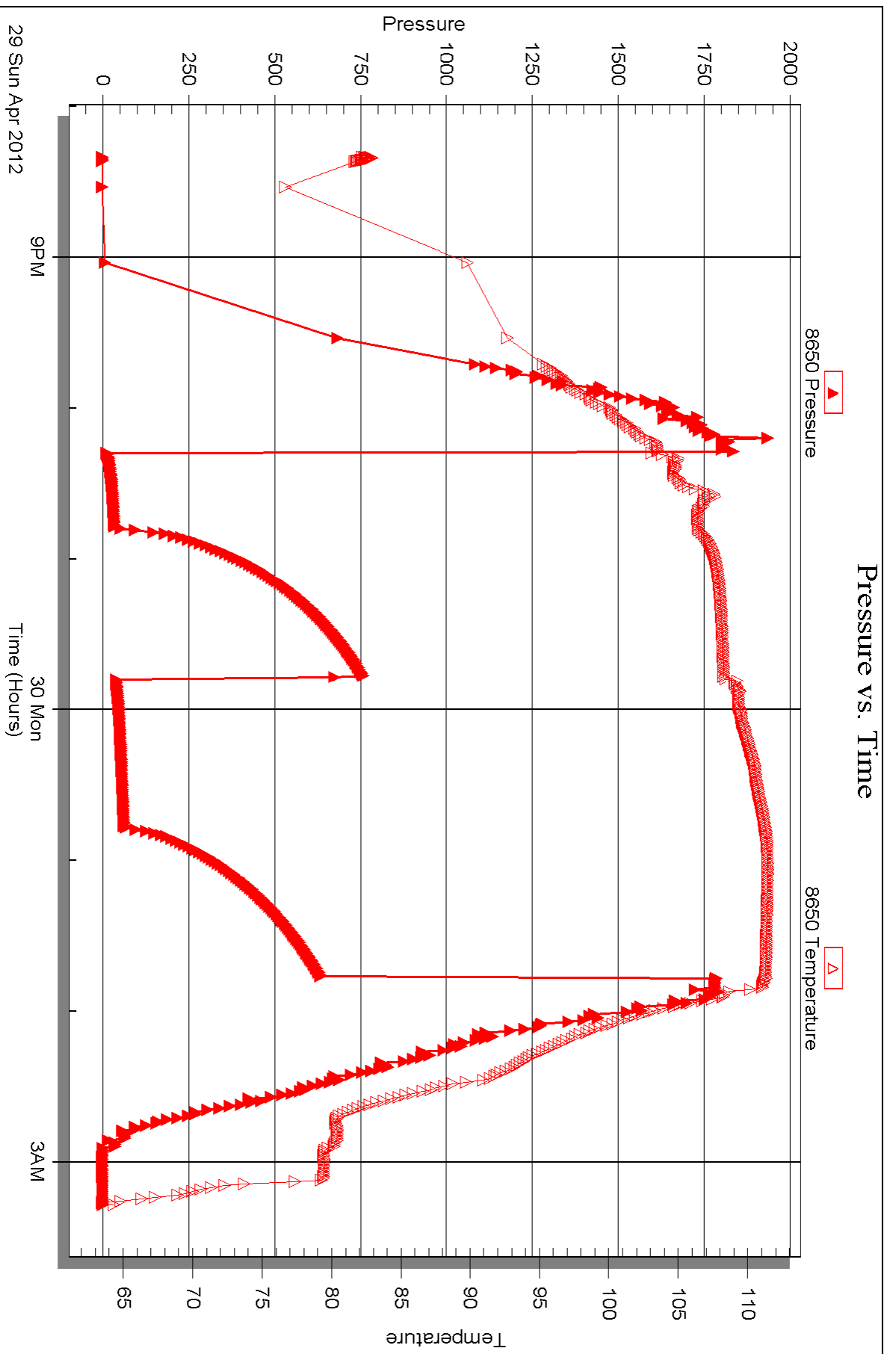


Serial #: 8650

Outside Brito Oil Company Inc.

Fairleigh 'D' #1-7

DST Test Number: 1





DRILL STEM TEST REPORT

Prepared For: **Brito Oil Company Inc.**

1700 N Waterfront PKWY
BLDG 300 Suite C
Wichita KS 67206

ATTN: Phil Askey

Fairleigh 'D' #1-7

7-15s-32w Logan,KS

Start Date: 2012.04.30 @ 12:25:00

End Date: 2012.04.30 @ 18:51:30

Job Ticket #: 45954 DST #: 2

Trilobite Testing, Inc

PO Box 362 Hays, KS 67601

ph: 785-625-4778 fax: 785-625-5620

Printed: 2012.05.09 @ 09:36:36

Brito Oil Company Inc.

7-15s-32w Logan,KS

Fairleigh 'D' #1-7

DST # 2

Kansas City "H"

2012.04.30



TRILOBITE TESTING, INC.

DRILL STEM TEST REPORT

Brito Oil Company Inc.
 1700 N Waterfront PKWY
 BLDG 300 Suite C
 Wichita KS 67206
 ATTN: Phil Askey

7-15s-32w Logan,KS
Fairleigh 'D' #1-7
 Job Ticket: 45954 **DST#: 2**
 Test Start: 2012.04.30 @ 12:25:00

GENERAL INFORMATION:

Formation: **Kansas City "H"**
 Deviated: No Whipstock: ft (KB)
 Time Tool Opened: 13:58:15
 Time Test Ended: 18:51:30
 Interval: **3859.00 ft (KB) To 3900.00 ft (KB) (TVD)**
 Total Depth: 3900.00 ft (KB) (TVD)
 Hole Diameter: 7.88 inches Hole Condition: Fair
 Test Type: Conventional Bottom Hole (Reset)
 Tester: Jace McKinney
 Unit No: 46
 Reference Elevations: 2637.00 ft (KB)
 2631.00 ft (CF)
 KB to GR/CF: 6.00 ft

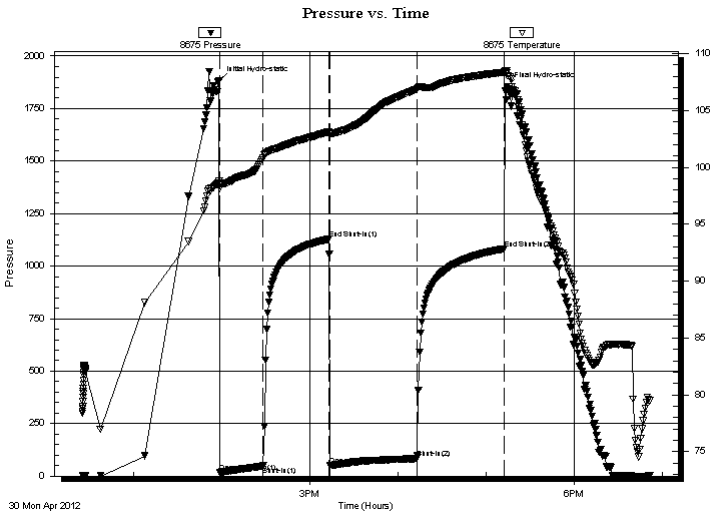
Serial #: 8675

Inside

Press @ Run Depth: 83.65 psig @ 3860.00 ft (KB) Capacity: 8000.00 psig
 Start Date: 2012.04.30 End Date: 2012.04.30 Last Calib.: 2012.04.30
 Start Time: 12:25:01 End Time: 18:51:30 Time On Btm: 2012.04.30 @ 13:58:00
 Time Off Btm: 2012.04.30 @ 17:14:00

TEST COMMENT: Built to 2 1/4" blow
 No return blow
 Built to 3 1/4" blow
 No return blow

PRESSURE SUMMARY



Time (Min.)	Pressure (psig)	Temp (deg F)	Annotation
0	1883.74	98.80	Initial Hydro-static
1	17.25	98.16	Open To Flow (1)
30	48.20	100.83	Shut-In(1)
75	1128.34	103.15	End Shut-In(1)
76	49.74	102.80	Open To Flow (2)
135	83.65	106.86	Shut-In(2)
195	1082.98	108.36	End Shut-In(2)
196	1853.58	108.34	Final Hydro-static

Recovery

Length (ft)	Description	Volume (bbl)
155.00	w cm 40%W 60%M w ith oil spots	1.05

* Recovery from multiple tests

Gas Rates

Choke (inches)	Pressure (psig)	Gas Rate (Mcf/d)



**TRILOBITE
TESTING, INC.**

DRILL STEM TEST REPORT

TOOL DIAGRAM

Brito Oil Company Inc.

7-15s-32w Logan,KS

1700 N Waterfront PKWY
BLDG 300 Suite C
Wichita KS 67206
ATTN: Phil Askey

Fairleigh 'D' #1-7

Job Ticket: 45954

DST#: 2

Test Start: 2012.04.30 @ 12:25:00

Tool Information

Drill Pipe:	Length: 3725.79 ft	Diameter: 3.80 inches	Volume: 52.26 bbl	Tool Weight: 1500.00 lb
Heavy Wt. Pipe:	Length: 0.00 ft	Diameter: 0.00 inches	Volume: 0.00 bbl	Weight set on Packer: 30000.00 lb
Drill Collar:	Length: 123.29 ft	Diameter: 2.25 inches	Volume: 0.61 bbl	Weight to Pull Loose: 64000.00 lb
			<u>Total Volume: 52.87 bbl</u>	Tool Chased 0.00 ft
Drill Pipe Above KB:	10.08 ft			String Weight: Initial 54000.00 lb
Depth to Top Packer:	3859.00 ft			Final 54000.00 lb
Depth to Bottom Packer:	ft			
Interval between Packers:	41.00 ft			
Tool Length:	61.00 ft			
Number of Packers:	2	Diameter: 6.75 inches		

Tool Comments:

Tool Description	Length (ft)	Serial No.	Position	Depth (ft)	Accum. Lengths
------------------	-------------	------------	----------	------------	----------------

Change Over Sub	1.00			3840.00	
Shut In Tool	5.00			3845.00	
Hydraulic tool	5.00			3850.00	
Packer	5.00			3855.00	20.00 Bottom Of Top Packer
Packer	4.00			3859.00	
Stubb	1.00			3860.00	
Recorder	0.00	8675	Inside	3860.00	
Recorder	0.00	8650	Outside	3860.00	
Perforations	4.00			3864.00	
Change Over Sub	1.00			3865.00	
Drill Pipe	31.00			3896.00	
Change Over Sub	1.00			3897.00	
Bullnose	3.00			3900.00	41.00 Bottom Packers & Anchor

Total Tool Length: 61.00



**TRILOBITE
TESTING, INC.**

DRILL STEM TEST REPORT

FLUID SUMMARY

Brito Oil Company Inc.

7-15s-32w Logan,KS

1700 N Waterfront PKWY
BLDG 300 Suite C
Wichita KS 67206
ATTN: Phil Askey

Fairleigh 'D' #1-7

Job Ticket: 45954

DST#: 2

Test Start: 2012.04.30 @ 12:25:00

Mud and Cushion Information

Mud Type: Gel Chem

Cushion Type:

Oil API:

deg API

Mud Weight: 9.00 lb/gal

Cushion Length:

ft

Water Salinity:

ppm

Viscosity: 56.00 sec/qt

Cushion Volume:

bbbl

Water Loss: 9.56 in³

Gas Cushion Type:

Resistivity: ohm.m

Gas Cushion Pressure:

psig

Salinity: 3400.00 ppm

Filter Cake: 1.00 inches

Recovery Information

Recovery Table

Length ft	Description	Volume bbl
155.00	w cm 40%W 60%M w ith oil spots	1.051

Total Length: 155.00 ft Total Volume: 1.051 bbl

Num Fluid Samples: 0

Num Gas Bombs: 0

Serial #:

Laboratory Name:

Laboratory Location:

Recovery Comments: RW: .20 @ 80 F = 30,000

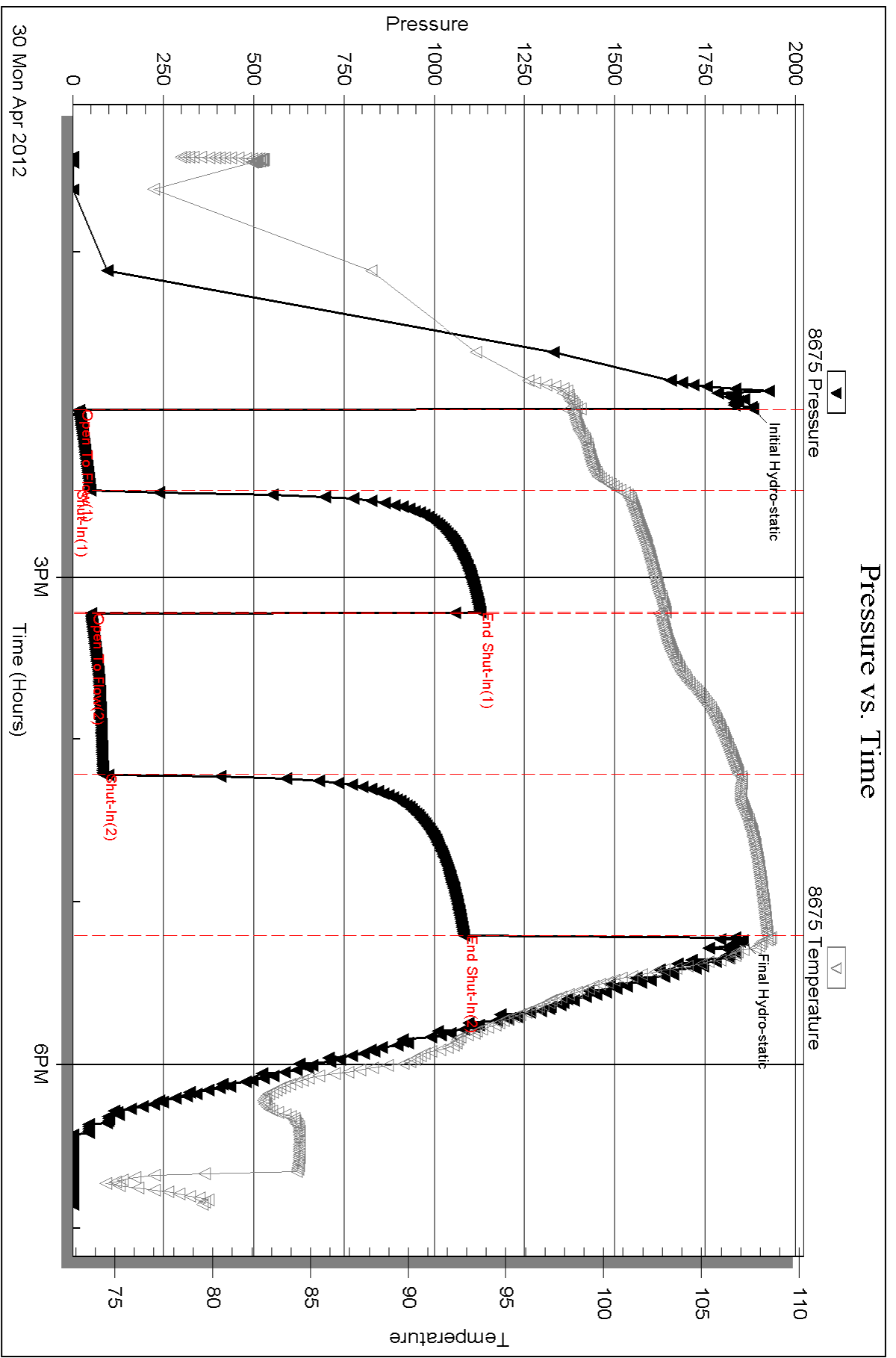
Serial #: 8675

Inside

Brito Oil Company Inc.

Fairleigh ID #1-7

DST Test Number: 2

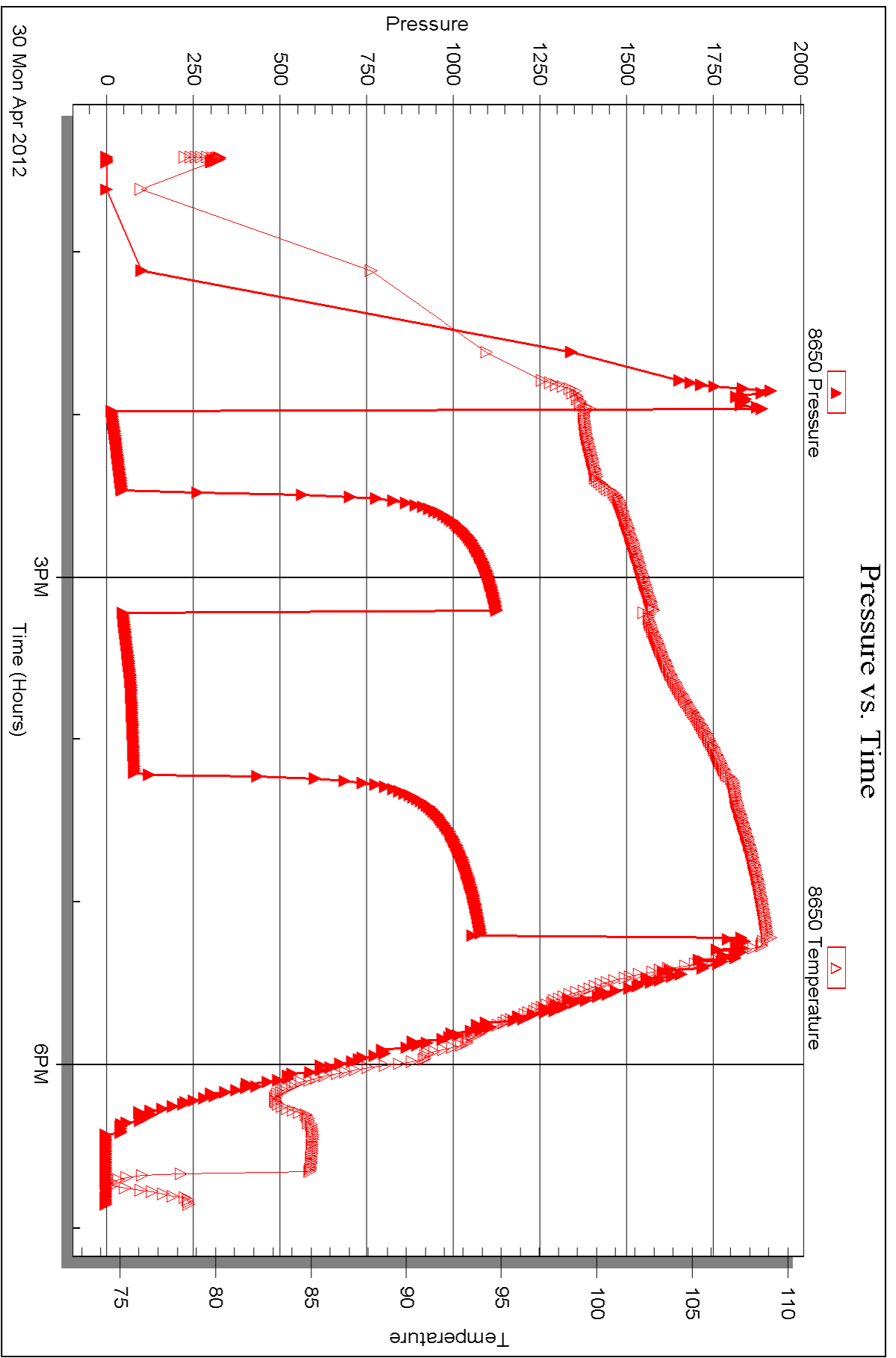


Serial #: 8650

Outside Brito Oil Company Inc.

Fairleigh 'D' #1-7

DST Test Number: 2



Triobite Testing, Inc

Ref. No: 45954

Printed: 2012.05.09 @ 09:36:38



DRILL STEM TEST REPORT

Prepared For: **Brito Oil Company Inc.**

1700 N Waterfront PKWY
BLDG 300 Suite C
Wichita KS 67206

ATTN: Phil Askey

Fairleigh 'D' #1-7

7-15s-32w Logan,KS

Start Date: 2012.05.01 @ 03:45:00

End Date: 2012.05.01 @ 10:10:30

Job Ticket #: 45955 DST #: 3

Trilobite Testing, Inc

PO Box 362 Hays, KS 67601

ph: 785-625-4778 fax: 785-625-5620

Printed: 2012.05.09 @ 09:35:57



**TRILOBITE
TESTING, INC.**

DRILL STEM TEST REPORT

Brito Oil Company Inc.

7-15s-32w Logan,KS

1700 N Waterfront PKWY
BLDG 300 Suite C
Wichita KS 67206
ATTN: Phil Askey

Fairleigh 'D' #1-7

Job Ticket: 45955

DST#: 3

Test Start: 2012.05.01 @ 03:45:00

GENERAL INFORMATION:

Formation: **Kansas City "I-J"**
 Deviated: No Whipstock: ft (KB)
 Time Tool Opened: 05:34:00
 Time Test Ended: 10:10:30
 Interval: **3912.00 ft (KB) To 3953.00 ft (KB) (TVD)**
 Total Depth: 3953.00 ft (KB) (TVD)
 Hole Diameter: 7.88 inches Hole Condition: Fair
 Test Type: Conventional Bottom Hole (Reset)
 Tester: Jace McKinney
 Unit No: 46
 Reference Elevations: 2637.00 ft (KB)
 2631.00 ft (CF)
 KB to GR/CF: 6.00 ft

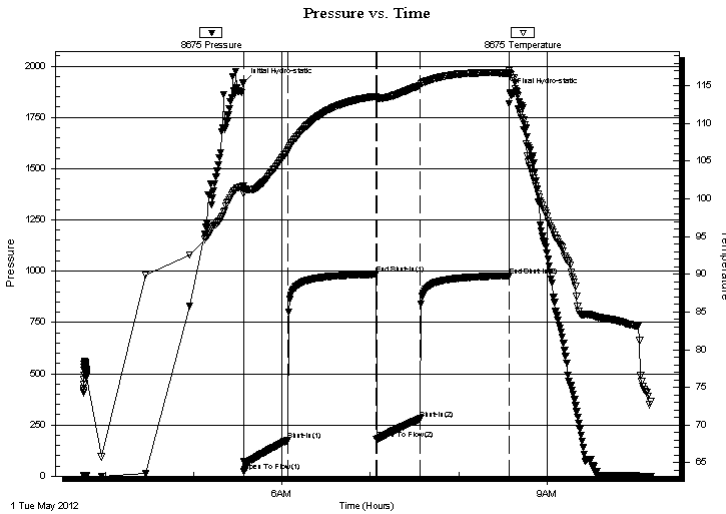
Serial #: 8675

Inside

Press @ RunDepth: 279.90 psig @ 3913.00 ft (KB) Capacity: 8000.00 psig
 Start Date: 2012.05.01 End Date: 2012.05.01 Last Calib.: 2012.05.01
 Start Time: 03:45:01 End Time: 10:10:30 Time On Btm: 2012.05.01 @ 05:33:30
 Time Off Btm: 2012.05.01 @ 08:35:00

TEST COMMENT: B.O.B. in 11 min.
 Bled off for 5 min. No return blow
 B.O.B. in 16 min.
 Bled off for 5 min. No return blow

PRESSURE SUMMARY



Time (Min.)	Pressure (psig)	Temp (deg F)	Annotation
0	1919.72	101.74	Initial Hydro-static
1	24.79	101.19	Open To Flow (1)
31	176.16	106.44	Shut-In(1)
91	984.92	113.57	End Shut-In(1)
91	178.09	113.24	Open To Flow (2)
121	279.90	115.03	Shut-In(2)
181	977.81	116.65	End Shut-In(2)
182	1872.05	116.57	Final Hydro-static

Recovery

Length (ft)	Description	Volume (bbl)
510.00	100% Water w ith oil spots	6.03

* Recovery from multiple tests

Gas Rates

Choke (inches)	Pressure (psig)	Gas Rate (Mcf/d)



TRILOBITE TESTING, INC.

DRILL STEM TEST REPORT

Brito Oil Company Inc.
1700 N Waterfront PKWY
BLDG 300 Suite C
Wichita KS 67206
ATTN: Phil Askey

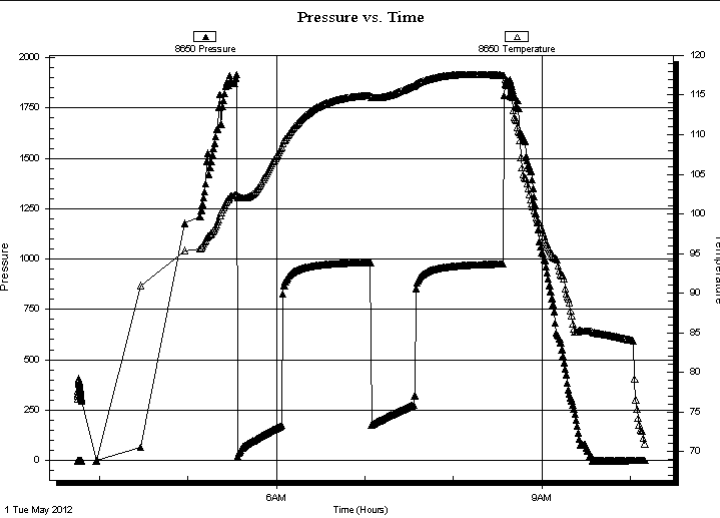
7-15s-32w Logan, KS
Fairleigh 'D' #1-7
Job Ticket: 45955 **DST#: 3**
Test Start: 2012.05.01 @ 03:45:00

GENERAL INFORMATION:

Formation: Kansas City "I-J"			
Deviated: No	Whipstock: ft (KB)	Test Type: Conventional Bottom Hole (Reset)	
Time Tool Opened: 05:34:00		Tester: Jace McKinney	
Time Test Ended: 10:10:30		Unit No: 46	
Interval: 3912.00 ft (KB) To 3953.00 ft (KB) (TVD)		Reference Elevations: 2637.00 ft (KB)	
Total Depth: 3953.00 ft (KB) (TVD)		2631.00 ft (CF)	
Hole Diameter: 7.88 inches	Hole Condition: Fair	KB to GR/CF: 6.00 ft	

Serial #: 8650	Outside				
Press @ Run Depth: psig @	3913.00 ft (KB)	Capacity: 8000.00 psig			
Start Date: 2012.05.01	End Date: 2012.05.01	Last Calib.: 2012.05.01			
Start Time: 03:45:12	End Time: 10:10:14	Time On Btm:			
		Time Off Btm:			

TEST COMMENT: B.O.B. in 11 min.
Bled off for 5 min. No return blow
B.O.B. in 16 min.
Bled off for 5 min. No return blow



PRESSURE SUMMARY			
Time (Min.)	Pressure (psig)	Temp (deg F)	Annotation

Recovery		
Length (ft)	Description	Volume (bbl)
510.00	100% Water w ith oil spots	6.03

* Recovery from multiple tests

Gas Rates			
	Choke (inches)	Pressure (psig)	Gas Rate (Mcf/d)



**TRILOBITE
TESTING, INC.**

DRILL STEM TEST REPORT

TOOL DIAGRAM

Brito Oil Company Inc.

7-15s-32w Logan,KS

1700 N Waterfront PKWY
BLDG 300 Suite C
Wichita KS 67206
ATTN: Phil Askey

Fairleigh 'D' #1-7

Job Ticket: 45955

DST#: 3

Test Start: 2012.05.01 @ 03:45:00

Tool Information

Drill Pipe:	Length: 3789.39 ft	Diameter: 3.80 inches	Volume: 53.16 bbl	Tool Weight: 1500.00 lb
Heavy Wt. Pipe:	Length: 0.00 ft	Diameter: 0.00 inches	Volume: 0.00 bbl	Weight set on Packer: 30000.00 lb
Drill Collar:	Length: 123.29 ft	Diameter: 2.25 inches	Volume: 0.61 bbl	Weight to Pull Loose: 65000.00 lb
			<u>Total Volume: 53.77 bbl</u>	Tool Chased 0.00 ft
Drill Pipe Above KB:	20.68 ft			String Weight: Initial 52000.00 lb
Depth to Top Packer:	3912.00 ft			Final 56000.00 lb
Depth to Bottom Packer:	ft			
Interval between Packers:	41.00 ft			
Tool Length:	61.00 ft			
Number of Packers:	2	Diameter: 6.75 inches		

Tool Comments:

Tool Description	Length (ft)	Serial No.	Position	Depth (ft)	Accum. Lengths
------------------	-------------	------------	----------	------------	----------------

Change Over Sub	1.00			3893.00	
Shut In Tool	5.00			3898.00	
Hydraulic tool	5.00			3903.00	
Packer	5.00			3908.00	20.00 Bottom Of Top Packer
Packer	4.00			3912.00	
Stubb	1.00			3913.00	
Recorder	0.00	8675	Inside	3913.00	
Recorder	0.00	8650	Outside	3913.00	
Perforations	4.00			3917.00	
Change Over Sub	1.00			3918.00	
Drill Pipe	31.00			3949.00	
Change Over Sub	1.00			3950.00	
Bullnose	3.00			3953.00	41.00 Bottom Packers & Anchor

Total Tool Length: 61.00



**TRILOBITE
TESTING, INC.**

DRILL STEM TEST REPORT

FLUID SUMMARY

Brito Oil Company Inc.

7-15s-32w Logan,KS

1700 N Waterfront PKWY
BLDG 300 Suite C
Wichita KS 67206
ATTN: Phil Askey

Fairleigh 'D' #1-7

Job Ticket: 45955

DST#: 3

Test Start: 2012.05.01 @ 03:45:00

Mud and Cushion Information

Mud Type: Gel Chem

Cushion Type:

Oil API:

deg API

Mud Weight: 9.00 lb/gal

Cushion Length:

ft

Water Salinity:

55000 ppm

Viscosity: 56.00 sec/qt

Cushion Volume:

bbbl

Water Loss: 9.57 in³

Gas Cushion Type:

Resistivity: ohm.m

Gas Cushion Pressure:

psig

Salinity: 3400.00 ppm

Filter Cake: 1.00 inches

Recovery Information

Recovery Table

Length ft	Description	Volume bbl
510.00	100% Water w ith oil spots	6.031

Total Length: 510.00 ft Total Volume: 6.031 bbl

Num Fluid Samples: 0

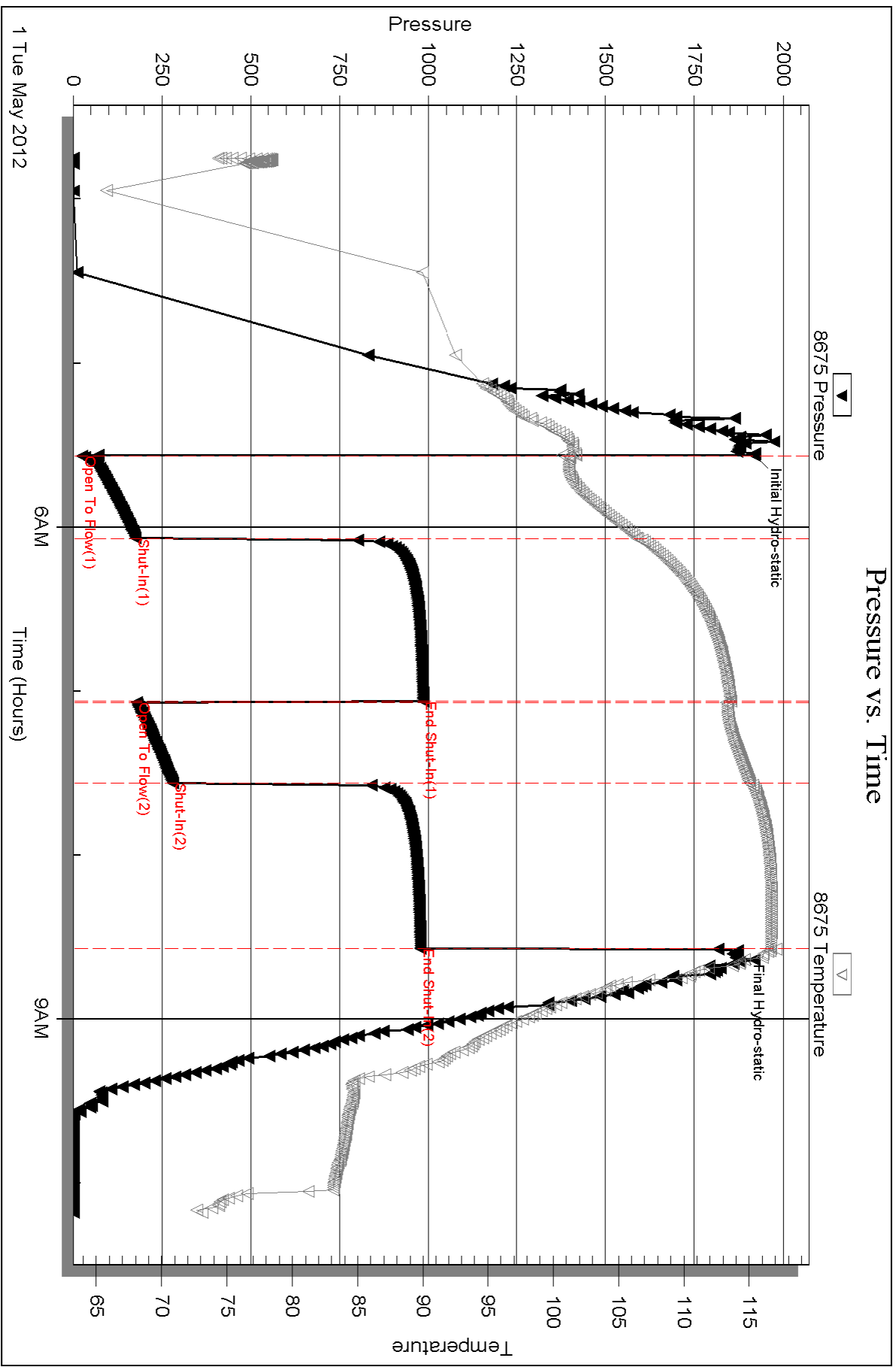
Num Gas Bombs: 0

Serial #:

Laboratory Name:

Laboratory Location:

Recovery Comments: RW: .15 @ 60 F = 55,000

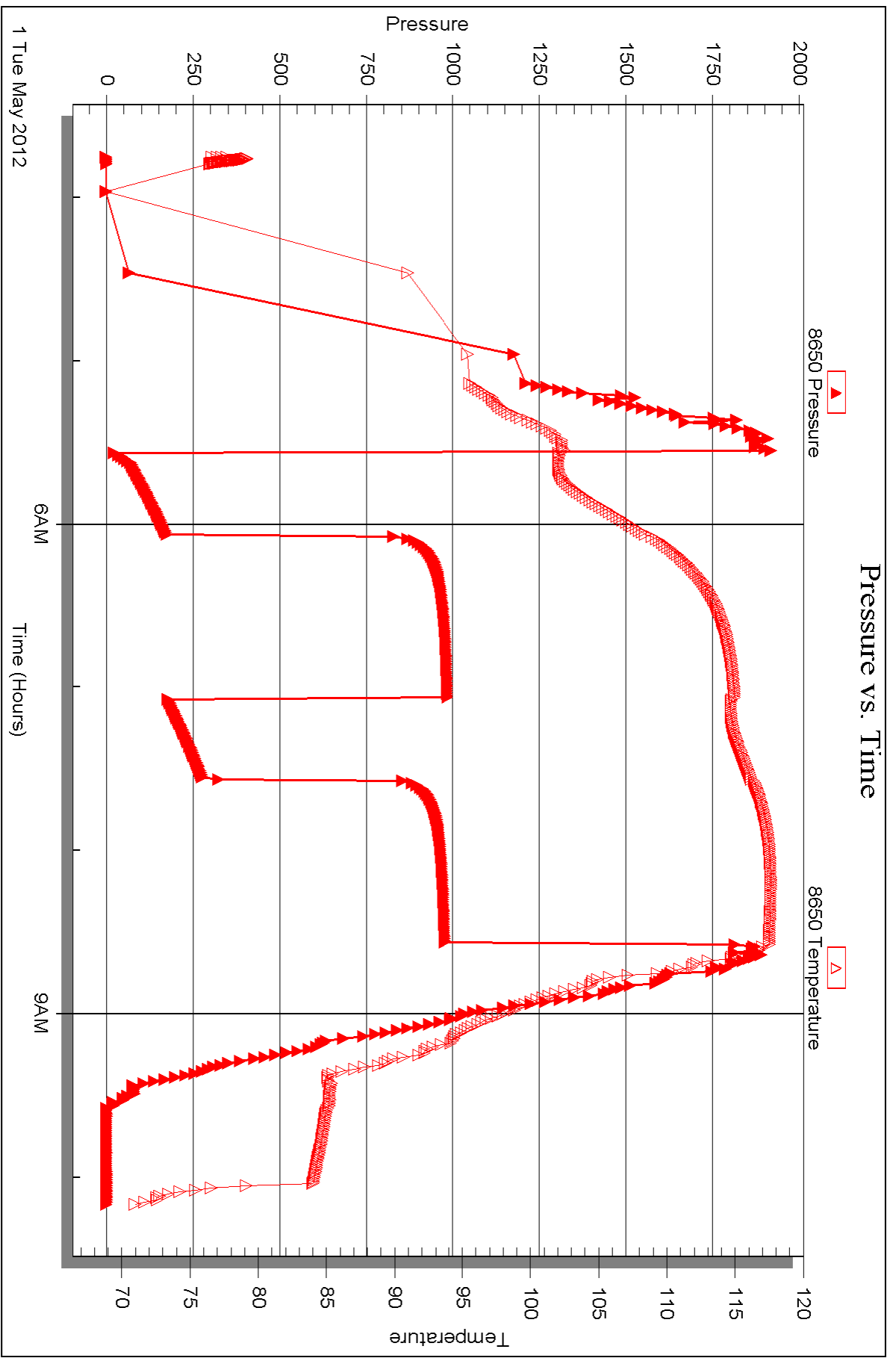


Serial #: 8650

Outside Brito Oil Company Inc.

Fairleigh 'D' #1-7

DST Test Number: 3



Triobite Testing, Inc

Ref. No: 45955

Printed: 2012.05.09 @ 09:35:59



DRILL STEM TEST REPORT

Prepared For: **Brito Oil Company Inc.**

1700 N Waterfront PKWY
BLDG 300 Suite C
Wichita KS 67206

ATTN: Phil Askey

Fairleigh 'D' #1-7

7-15s-32w Logan,KS

Start Date: 2012.05.02 @ 08:15:00

End Date: 2012.05.02 @ 15:59:30

Job Ticket #: 45956 DST #: 4

Trilobite Testing, Inc
PO Box 362 Hays, KS 67601
ph: 785-625-4778 fax: 785-625-5620

Printed: 2012.05.09 @ 09:35:17



TRILOBITE TESTING, INC.

DRILL STEM TEST REPORT

Brito Oil Company Inc.

7-15s-32w Logan, KS

1700 N Waterfront PKWY
BLDG 300 Suite C
Wichita KS 67206
ATTN: Phil Askey

Fairleigh 'D' #1-7

Job Ticket: 45956

DST#: 4

Test Start: 2012.05.02 @ 08:15:00

GENERAL INFORMATION:

Formation: **Marmaton**

Deviated: No Whipstock: ft (KB)

Time Tool Opened: 09:58:00

Time Test Ended: 15:59:30

Test Type: Conventional Bottom Hole (Reset)

Tester: Jace McKinney

Unit No: 46

Interval: 4080.00 ft (KB) To 4160.00 ft (KB) (TVD)

Reference Elevations: 2637.00 ft (KB)

Total Depth: 4160.00 ft (KB) (TVD)

2631.00 ft (CF)

Hole Diameter: 7.88 inches Hole Condition: Fair

KB to GR/CF: 6.00 ft

Serial #: 8675 Inside

Press @ Run Depth: 94.69 psig @ 4081.00 ft (KB)

Capacity: 8000.00 psig

Start Date: 2012.05.02

End Date: 2012.05.02

Last Calib.: 2012.05.02

Start Time: 08:15:01

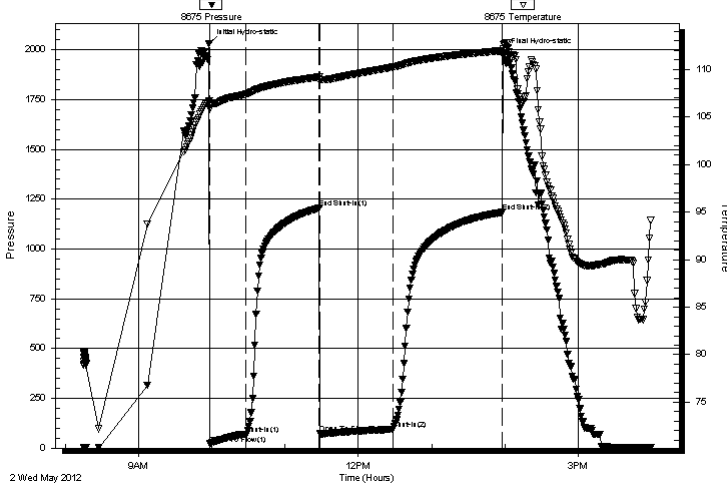
End Time: 15:59:30

Time On Btm: 2012.05.02 @ 09:57:45

Time Off Btm: 2012.05.02 @ 13:59:00

TEST COMMENT: Built to 6 1/2" blow
No return blow
B.O.B. in 31 min.
Bled off for 5 min. Built to 1/4" return blow, Died in 45 min.

Pressure vs. Time



PRESSURE SUMMARY

Time (Min.)	Pressure (psig)	Temp (deg F)	Annotation
0	2033.14	106.68	Initial Hydro-static
1	20.81	105.83	Open To Flow (1)
30	68.32	107.40	Shut-In(1)
91	1205.24	109.22	End Shut-In(1)
91	74.61	108.71	Open To Flow (2)
151	94.69	110.24	Shut-In(2)
240	1184.48	111.97	End Shut-In(2)
242	1986.56	112.64	Final Hydro-static

Recovery

Length (ft)	Description	Volume (bbl)
0.00	190 Gas In Pipe	0.00
145.00	gcw om 10%G 10%W 30%O 50%m	0.91
60.00	100% Oil	0.84

* Recovery from multiple tests

Gas Rates

	Choke (inches)	Pressure (psig)	Gas Rate (Mcf/d)



**TRILOBITE
TESTING, INC.**

DRILL STEM TEST REPORT

Brito Oil Company Inc.

7-15s-32w Logan,KS

1700 N Waterfront PKWY
BLDG 300 Suite C
Wichita KS 67206
ATTN: Phil Askey

Fairleigh 'D' #1-7

Job Ticket: 45956

DST#: 4

Test Start: 2012.05.02 @ 08:15:00

GENERAL INFORMATION:

Formation: **Marmaton**

Deviated: No Whipstock: ft (KB)

Time Tool Opened: 09:58:00

Time Test Ended: 15:59:30

Test Type: Conventional Bottom Hole (Reset)

Tester: Jace McKinney

Unit No: 46

Interval: 4080.00 ft (KB) To 4160.00 ft (KB) (TVD)

Total Depth: 4160.00 ft (KB) (TVD)

Hole Diameter: 7.88 inches Hole Condition: Fair

Reference Elevations: 2637.00 ft (KB)

2631.00 ft (CF)

KB to GR/CF: 6.00 ft

Serial #: 8650 Outside

Press@RunDepth: psig @ 4081.00 ft (KB)

Start Date: 2012.05.02

End Date: 2012.05.02

Start Time: 08:15:01

End Time: 15:59:15

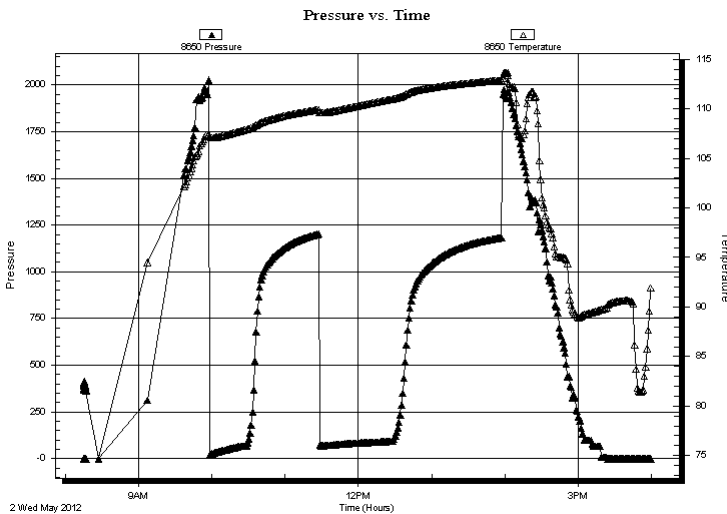
Capacity: 8000.00 psig

Last Calib.: 2012.05.02

Time On Btm:

Time Off Btm:

TEST COMMENT: Built to 6 1/2" blow
No return blow
B.O.B. in 31 min.
Bled off for 5 min. Built to 1/4" return blow , Died in 45 min.



PRESSURE SUMMARY

Time (Min.)	Pressure (psig)	Temp (deg F)	Annotation
-------------	-----------------	--------------	------------

Recovery

Length (ft)	Description	Volume (bbl)
0.00	190 Gas In Pipe	0.00
145.00	gcw om 10%G 10%W 30%O 50%m	0.91
60.00	100% Oil	0.84

Gas Rates

	Choke (inches)	Pressure (psig)	Gas Rate (Mcf/d)
--	----------------	-----------------	------------------

* Recovery from multiple tests



**TRILOBITE
TESTING, INC.**

DRILL STEM TEST REPORT

TOOL DIAGRAM

Brito Oil Company Inc.

7-15s-32w Logan,KS

1700 N Waterfront PKWY
BLDG 300 Suite C
Wichita KS 67206
ATTN: Phil Askey

Fairleigh 'D' #1-7

Job Ticket: 45956

DST#: 4

Test Start: 2012.05.02 @ 08:15:00

Tool Information

Drill Pipe:	Length: 3944.33 ft	Diameter: 3.80 inches	Volume: 55.33 bbl	Tool Weight:	1500.00 lb
Heavy Wt. Pipe:	Length: 0.00 ft	Diameter: 0.00 inches	Volume: 0.00 bbl	Weight set on Packer:	30000.00 lb
Drill Collar:	Length: 123.29 ft	Diameter: 2.25 inches	Volume: 0.61 bbl	Weight to Pull Loose:	70000.00 lb
			<u>Total Volume: 55.94 bbl</u>	Tool Chased	0.00 ft
Drill Pipe Above KB:	7.62 ft			String Weight: Initial	55000.00 lb
Depth to Top Packer:	4080.00 ft			Final	58000.00 lb
Depth to Bottom Packer:	ft				
Interval between Packers:	80.00 ft				
Tool Length:	100.00 ft				
Number of Packers:	2	Diameter: 6.75 inches			

Tool Comments:

Tool Description

Tool Description	Length (ft)	Serial No.	Position	Depth (ft)	Accum. Lengths
Change Over Sub	1.00			4061.00	
Shut In Tool	5.00			4066.00	
Hydraulic tool	5.00			4071.00	
Packer	5.00			4076.00	20.00 Bottom Of Top Packer
Packer	4.00			4080.00	
Stubb	1.00			4081.00	
Recorder	0.00	8675	Inside	4081.00	
Recorder	0.00	8650	Outside	4081.00	
Perforations	11.00			4092.00	
Change Over Sub	1.00			4093.00	
Drill Pipe	63.00			4156.00	
Change Over Sub	1.00			4157.00	
Bullnose	3.00			4160.00	80.00 Bottom Packers & Anchor

Total Tool Length: 100.00



**TRILOBITE
TESTING, INC.**

DRILL STEM TEST REPORT

FLUID SUMMARY

Brito Oil Company Inc.

7-15s-32w Logan,KS

1700 N Waterfront PKWY
BLDG 300 Suite C
Wichita KS 67206
ATTN: Phil Askey

Fairleigh 'D' #1-7

Job Ticket: 45956

DST#: 4

Test Start: 2012.05.02 @ 08:15:00

Mud and Cushion Information

Mud Type: Gel Chem

Cushion Type:

Oil API:

35 deg API

Mud Weight: 9.00 lb/gal

Cushion Length:

ft

Water Salinity:

ppm

Viscosity: 51.00 sec/qt

Cushion Volume:

bbbl

Water Loss: 8.57 in³

Gas Cushion Type:

Resistivity: ohm.m

Gas Cushion Pressure:

psig

Salinity: 4000.00 ppm

Filter Cake: 1.00 inches

Recovery Information

Recovery Table

Length ft	Description	Volume bbl
0.00	190 Gas In Pipe	0.000
145.00	gcw om 10%G 10%W 30%O 50%m	0.911
60.00	100% Oil	0.842

Total Length: 205.00 ft Total Volume: 1.753 bbl

Num Fluid Samples: 0

Num Gas Bombs: 0

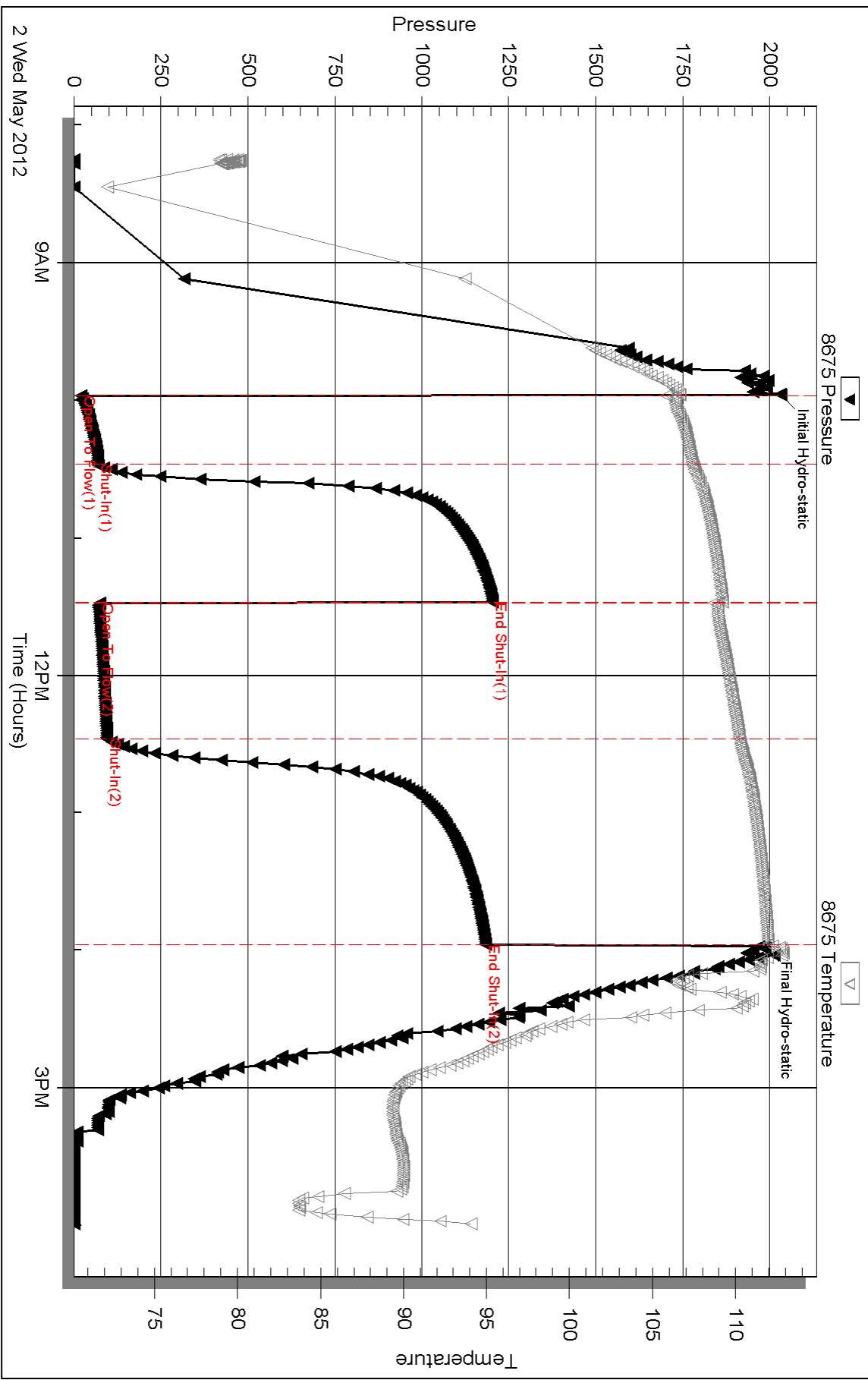
Serial #:

Laboratory Name:

Laboratory Location:

Recovery Comments: API: 35 @ 100 F = 35

Pressure vs. Time

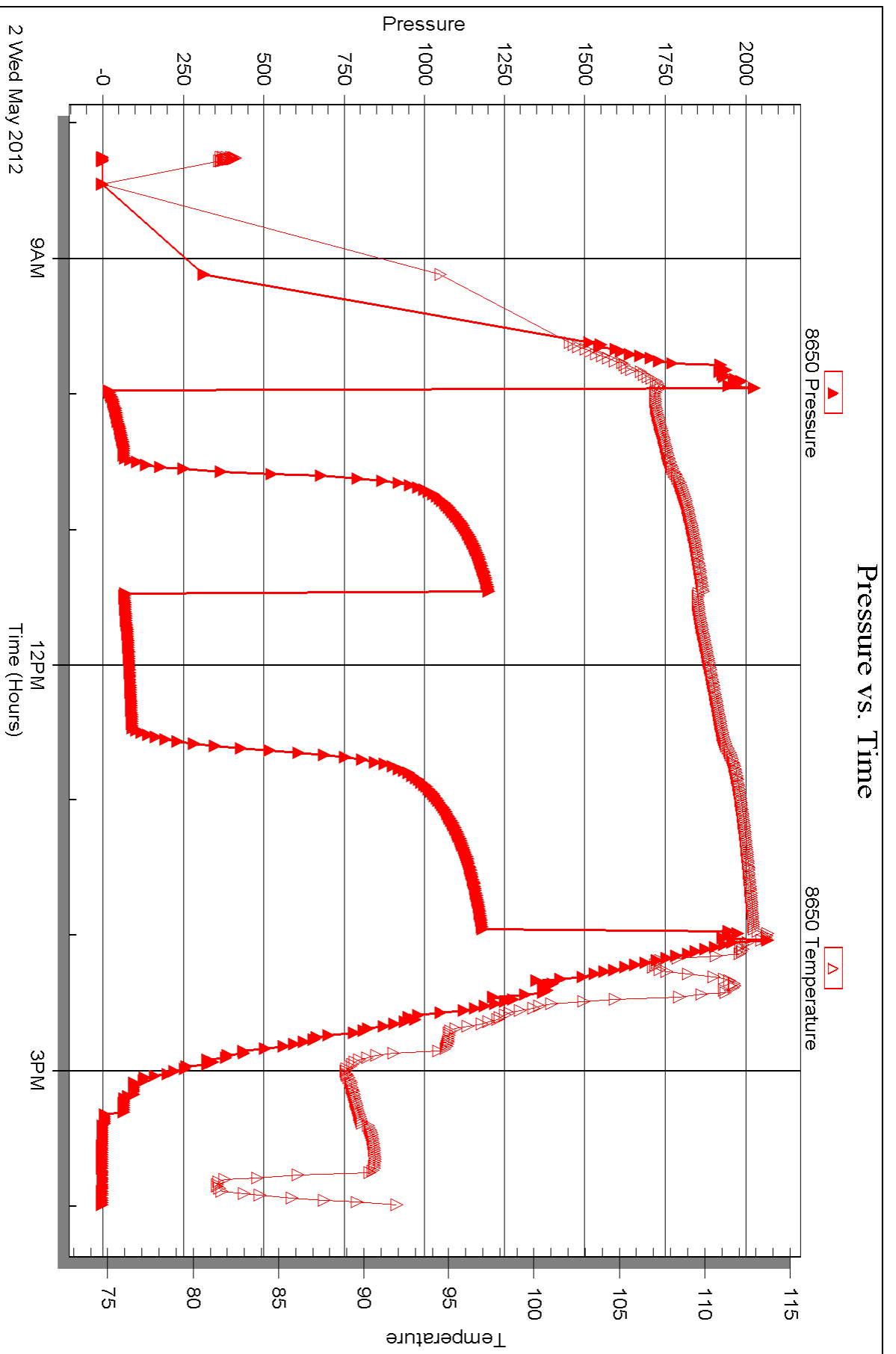


Serial #: 8650

Outside Brito Oil Company Inc.

Fairleigh 'D' #1-7

DST Test Number: 4





DRILL STEM TEST REPORT

Prepared For: **Brito Oil Company Inc.**

1700 N Waterfront PKWY
BLDG 300 Suite C
Wichita KS 67206

ATTN: Phil Askey

Fairleigh 'D' #1-7

7-15s-32w Logan,KS

Start Date: 2012.05.03 @ 07:00:00

End Date: 2012.05.03 @ 12:35:30

Job Ticket #: 45956 DST #: 5

Trilobite Testing, Inc
PO Box 362 Hays, KS 67601
ph: 785-625-4778 fax: 785-625-5620

Printed: 2012.05.09 @ 09:34:34

Brito Oil Company Inc.

7-15s-32w Logan,KS

Fairleigh 'D' #1-7

DST # 5

Pawnee, Fort Scott,

2012.05.03



**TRILOBITE
TESTING, INC.**

DRILL STEM TEST REPORT

Brito Oil Company Inc.

7-15s-32w Logan,KS

1700 N Waterfront PKWY
BLDG 300 Suite C
Wichita KS 67206
ATTN: Phil Askey

Fairleigh 'D' #1-7

Job Ticket: 45956

DST#: 5

Test Start: 2012.05.03 @ 07:00:00

GENERAL INFORMATION:

Formation: **Pawnee, Fort Scott,**

Deviated: No Whipstock: ft (KB)

Time Tool Opened: 08:57:30

Time Test Ended: 12:35:30

Test Type: Conventional Bottom Hole (Reset)

Tester: Jace McKinney

Unit No: 46

Interval: 4182.00 ft (KB) To 4270.00 ft (KB) (TVD)

Reference Elevations: 2637.00 ft (KB)

Total Depth: 4270.00 ft (KB) (TVD)

2631.00 ft (CF)

Hole Diameter: 7.88 inches Hole Condition: Fair

KB to GR/CF: 6.00 ft

Serial #: 8675 Inside

Press @ Run Depth: 51.61 psig @ 4183.00 ft (KB)

Capacity: 8000.00 psig

Start Date: 2012.05.03

End Date: 2012.05.03

Last Calib.: 2012.05.03

Start Time: 07:00:01

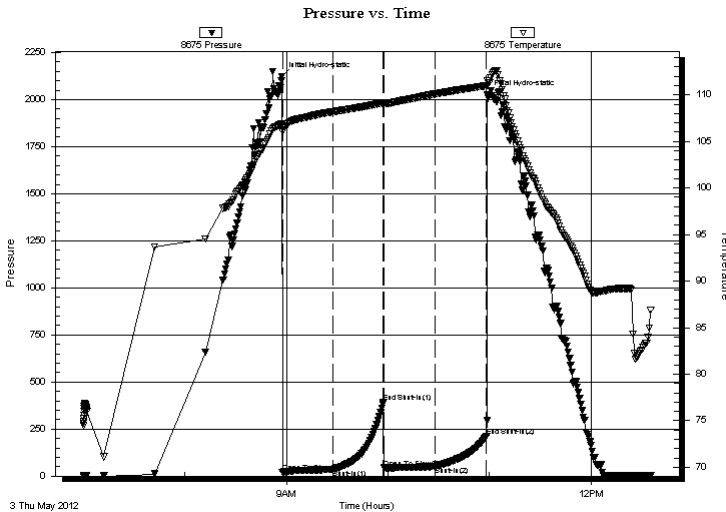
End Time: 12:35:30

Time On Btm: 2012.05.03 @ 08:57:15

Time Off Btm: 2012.05.03 @ 10:58:45

TEST COMMENT: Built to 2" blow
No return blow
Built 1 3/4" blow
No return blow

PRESSURE SUMMARY



Time (Min.)	Pressure (psig)	Temp (deg F)	Annotation
0	2121.13	106.93	Initial Hydro-static
1	20.95	106.08	Open To Flow (1)
31	36.04	108.19	Shut-In(1)
60	390.70	109.14	End Shut-In(1)
61	43.90	108.97	Open To Flow (2)
91	51.61	110.08	Shut-In(2)
121	212.84	110.99	End Shut-In(2)
122	2025.42	111.50	Final Hydro-static

Recovery

Length (ft)	Description	Volume (bbl)
70.00	ocm 10%O 90%M	0.34

* Recovery from multiple tests

Gas Rates

Choke (inches)	Pressure (psig)	Gas Rate (Mcf/d)



TRILOBITE TESTING, INC.

DRILL STEM TEST REPORT

Brito Oil Company Inc.

7-15s-32w Logan, KS

1700 N Waterfront PKWY
BLDG 300 Suite C
Wichita KS 67206
ATTN: Phil Askey

Fairleigh 'D' #1-7

Job Ticket: 45956

DST#: 5

Test Start: 2012.05.03 @ 07:00:00

GENERAL INFORMATION:

Formation: **Pawnee, Fort Scott,**

Deviated: No Whipstock: ft (KB)

Time Tool Opened: 08:57:30

Time Test Ended: 12:35:30

Test Type: Conventional Bottom Hole (Reset)

Tester: Jace McKinney

Unit No: 46

Interval: **4182.00 ft (KB) To 4270.00 ft (KB) (TVD)**

Reference Elevations: 2637.00 ft (KB)

Total Depth: 4270.00 ft (KB) (TVD)

2631.00 ft (CF)

Hole Diameter: 7.88 inches Hole Condition: Fair

KB to GR/CF: 6.00 ft

Serial #: **8650** Outside

Press @ Run Depth: psig @ 4183.00 ft (KB)

Capacity: 8000.00 psig

Start Date: 2012.05.03

End Date: 2012.05.03

Last Calib.: 2012.05.03

Start Time: 07:00:01

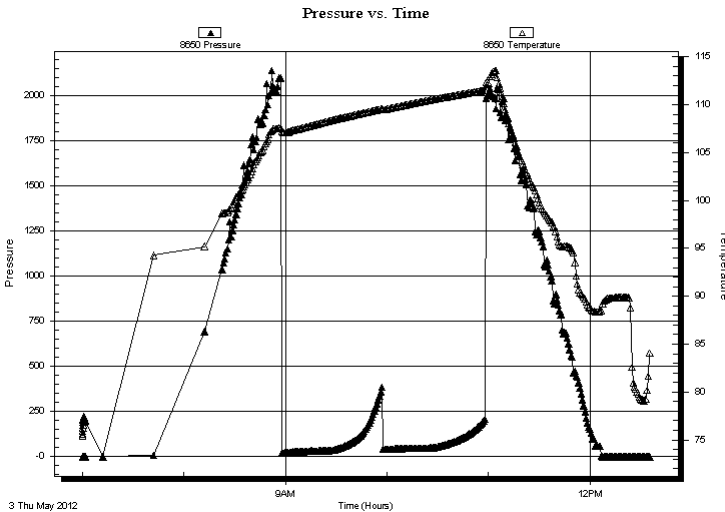
End Time: 12:35:15

Time On Btm:

Time Off Btm:

TEST COMMENT: Built to 2" blow
No return blow
Built 1 3/4" blow
No return blow

PRESSURE SUMMARY



Time (Min.)	Pressure (psig)	Temp (deg F)	Annotation

Recovery

Length (ft)	Description	Volume (bbl)
70.00	ocm 10%O 90%M	0.34

Gas Rates

Choke (inches)	Pressure (psig)	Gas Rate (Mcf/d)

* Recovery from multiple tests



**TRILOBITE
TESTING, INC.**

DRILL STEM TEST REPORT

TOOL DIAGRAM

Brito Oil Company Inc.

7-15s-32w Logan,KS

1700 N Waterfront PKWY
BLDG 300 Suite C
Wichita KS 67206
ATTN: Phil Askey

Fairleigh 'D' #1-7

Job Ticket: 45956

DST#: 5

Test Start: 2012.05.03 @ 07:00:00

Tool Information

Drill Pipe:	Length: 4069.50 ft	Diameter: 3.80 inches	Volume: 57.08 bbl	Tool Weight:	1500.00 lb
Heavy Wt. Pipe:	Length: 0.00 ft	Diameter: 0.00 inches	Volume: 0.00 bbl	Weight set on Packer:	30000.00 lb
Drill Collar:	Length: 123.29 ft	Diameter: 2.25 inches	Volume: 0.61 bbl	Weight to Pull Loose:	69000.00 lb
			<u>Total Volume: 57.69 bbl</u>	Tool Chased	0.00 ft
Drill Pipe Above KB:	30.79 ft			String Weight: Initial	59000.00 lb
Depth to Top Packer:	4182.00 ft			Final	59000.00 lb
Depth to Bottom Packer:	ft				
Interval between Packers:	88.00 ft				
Tool Length:	108.00 ft				
Number of Packers:	2	Diameter: 6.75 inches			

Tool Comments:

Tool Description	Length (ft)	Serial No.	Position	Depth (ft)	Accum. Lengths
------------------	-------------	------------	----------	------------	----------------

Change Over Sub	1.00			4163.00	
Shut In Tool	5.00			4168.00	
Hydraulic tool	5.00			4173.00	
Packer	5.00			4178.00	20.00 Bottom Of Top Packer
Packer	4.00			4182.00	
Stubb	1.00			4183.00	
Recorder	0.00	8675	Inside	4183.00	
Recorder	0.00	8650	Outside	4183.00	
Perforations	19.00			4202.00	
Change Over Sub	1.00			4203.00	
Drill Pipe	63.00			4266.00	
Change Over Sub	1.00			4267.00	
Bullnose	3.00			4270.00	88.00 Bottom Packers & Anchor

Total Tool Length: 108.00



**TRILOBITE
TESTING, INC.**

DRILL STEM TEST REPORT

FLUID SUMMARY

Brito Oil Company Inc.

7-15s-32w Logan,KS

1700 N Waterfront PKWY
BLDG 300 Suite C
Wichita KS 67206
ATTN: Phil Askey

Fairleigh 'D' #1-7

Job Ticket: 45956

DST#: 5

Test Start: 2012.05.03 @ 07:00:00

Mud and Cushion Information

Mud Type: Gel Chem

Mud Weight: 9.00 lb/gal

Viscosity: 58.00 sec/qt

Water Loss: 7.97 in³

Resistivity: ohm.m

Salinity: 5400.00 ppm

Filter Cake: 1.00 inches

Cushion Type:

Cushion Length: ft

Cushion Volume: bbl

Gas Cushion Type:

Gas Cushion Pressure: psig

Oil API:

Water Salinity: deg API

ppm

Recovery Information

Recovery Table

Length ft	Description	Volume bbl
70.00	ocm 10%O 90%M	0.344

Total Length: 70.00 ft Total Volume: 0.344 bbl

Num Fluid Samples: 0

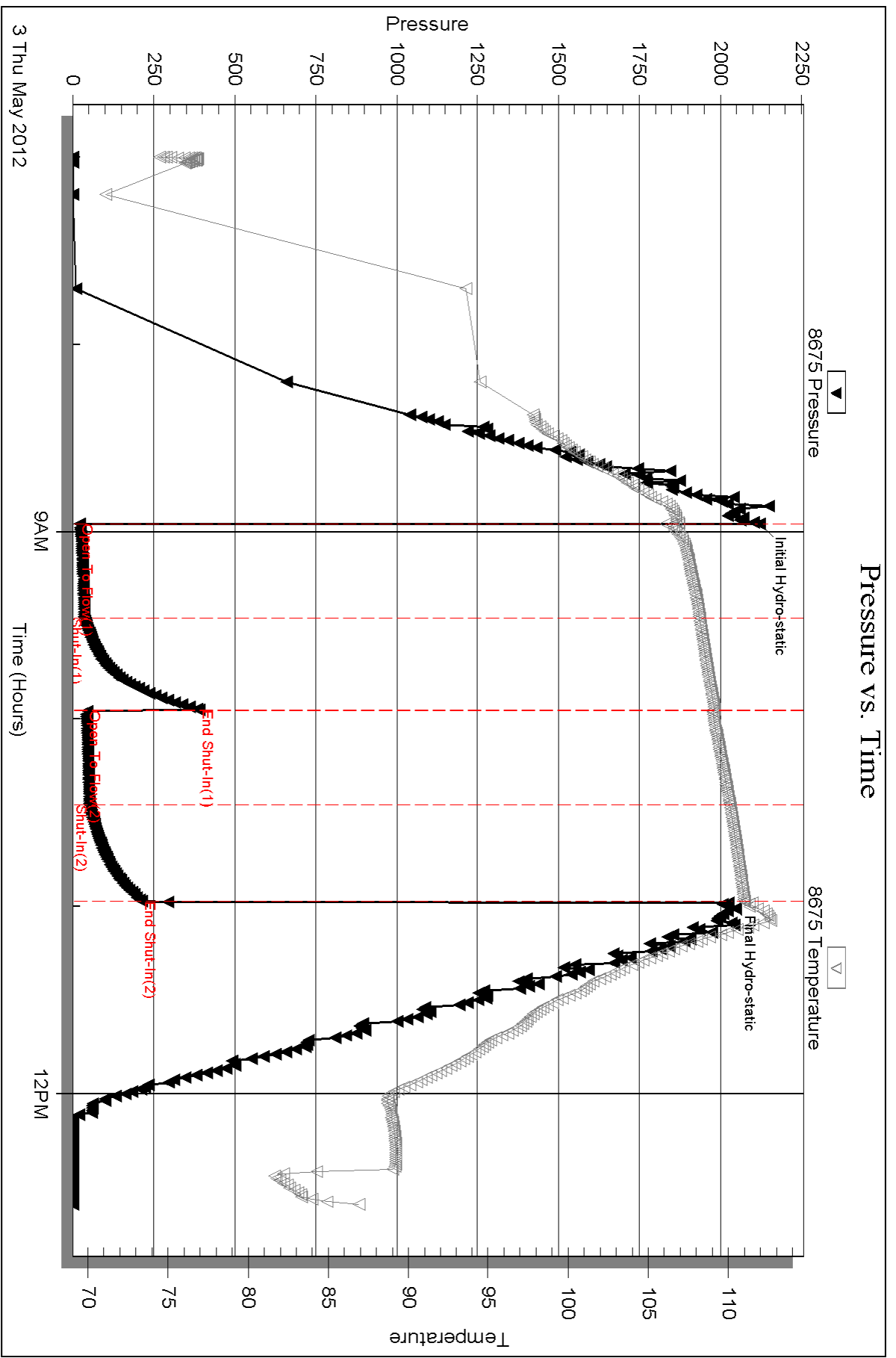
Num Gas Bombs: 0

Serial #:

Laboratory Name:

Laboratory Location:

Recovery Comments:

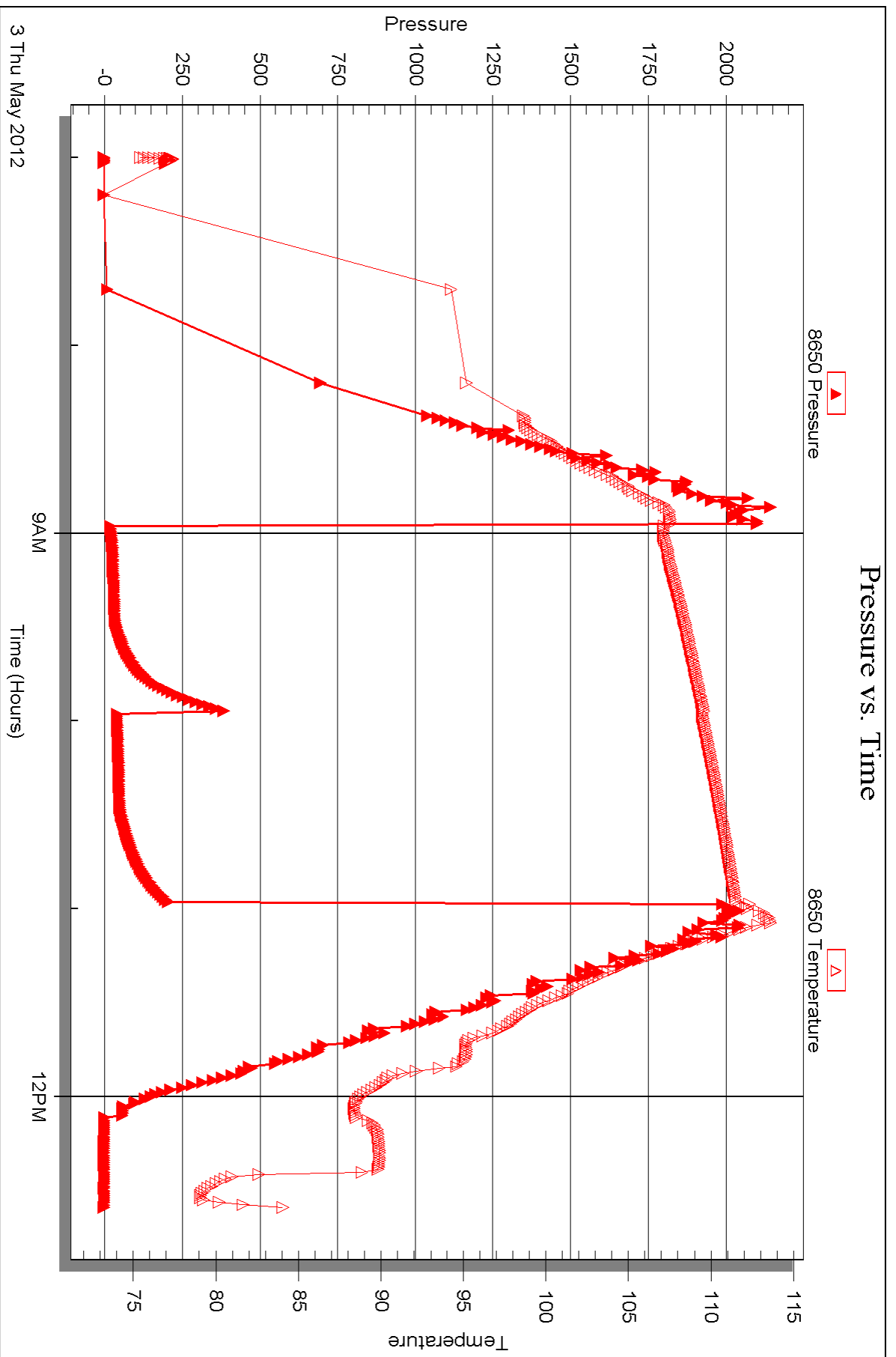


Serial #: 8650

Outside Brito Oil Company Inc.

Fairleigh 'D' #1-7

DST Test Number: 5



Triobite Testing, Inc

Ref. No: 45956

Printed: 2012.05.09 @ 09:34:37



DRILL STEM TEST REPORT

Prepared For: **Brito Oil Company Inc.**

1700 N Waterfront PKWY
BLDG 300 Suite C
Wichita KS 67206

ATTN: Phil Askey

Fairleigh 'D' #1-7

7-15s-32w Logan,KS

Start Date: 2012.05.03 @ 20:56:00

End Date: 2012.05.04 @ 05:17:30

Job Ticket #: 45958 DST #: 6

Trilobite Testing, Inc
PO Box 362 Hays, KS 67601
ph: 785-625-4778 fax: 785-625-5620

Printed: 2012.05.09 @ 09:33:48



**TRILOBITE
TESTING, INC.**

DRILL STEM TEST REPORT

Brito Oil Company Inc.

7-15s-32w Logan, KS

1700 N Waterfront PKWY
BLDG 300 Suite C
Wichita KS 67206
ATTN: Phil Askey

Fairleigh 'D' #1-7

Job Ticket: 45958

DST#: 6

Test Start: 2012.05.03 @ 20:56:00

GENERAL INFORMATION:

Formation: **Johnson**

Deviated: No Whipstock: ft (KB)

Time Tool Opened: 23:02:00

Time Test Ended: 05:17:30

Test Type: Conventional Bottom Hole (Reset)

Tester: Jace McKinney

Unit No: 46

Interval: 4268.00 ft (KB) To 4330.00 ft (KB) (TVD)

Reference Elevations: 2637.00 ft (KB)

Total Depth: 4330.00 ft (KB) (TVD)

2631.00 ft (CF)

Hole Diameter: 7.88 inches Hole Condition: Fair

KB to GR/CF: 6.00 ft

Serial #: 8675 Inside

Press @ Run Depth: 173.08 psig @ 4269.00 ft (KB)

Capacity: 8000.00 psig

Start Date: 2012.05.03

End Date:

2012.05.04

Last Calib.: 2012.05.04

Start Time: 20:50:01

End Time:

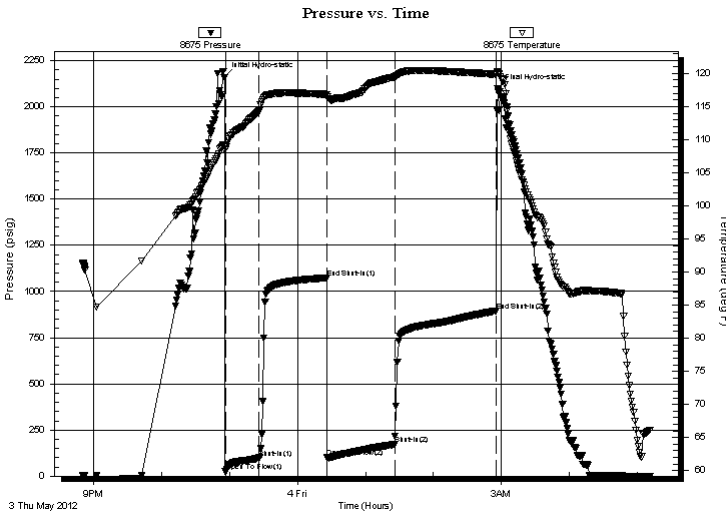
05:11:30

Time On Btm: 2012.05.03 @ 22:55:30

Time Off Btm: 2012.05.04 @ 02:57:00

TEST COMMENT: B.O.B. in 13 min.
Bled off for 5 min. Built to 1 1/2" return blow
B.O.B. in 4 min.
Bled off for 5 min. Built to 8" return blow

PRESSURE SUMMARY



Time (Min.)	Pressure (psig)	Temp (deg F)	Annotation
0	2161.57	109.12	Initial Hydro-static
1	23.68	108.49	Open To Flow (1)
31	96.74	114.27	Shut-In(1)
91	1074.07	116.82	End Shut-In(1)
91	101.37	116.46	Open To Flow (2)
151	173.08	119.44	Shut-In(2)
241	895.04	119.86	End Shut-In(2)
242	2099.59	120.05	Final Hydro-static

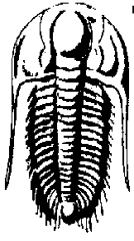
Recovery

Length (ft)	Description	Volume (bbl)
0.00	530 Feet Gas In Pipe	0.00
123.00	mco 5%M 15%G 80%O	0.60
128.00	gco 50%G 0%O	1.79
219.00	100% Clean Oil	3.07

* Recovery from multiple tests

Gas Rates

	Choke (inches)	Pressure (psig)	Gas Rate (Mcf/d)



TRILOBITE TESTING, INC.

DRILL STEM TEST REPORT

Brito Oil Company Inc.

7-15s-32w Logan, KS

1700 N Waterfront PKWY
BLDG 300 Suite C
Wichita KS 67206
ATTN: Phil Askey

Fairleigh 'D' #1-7

Job Ticket: 45958

DST#: 6

Test Start: 2012.05.03 @ 20:56:00

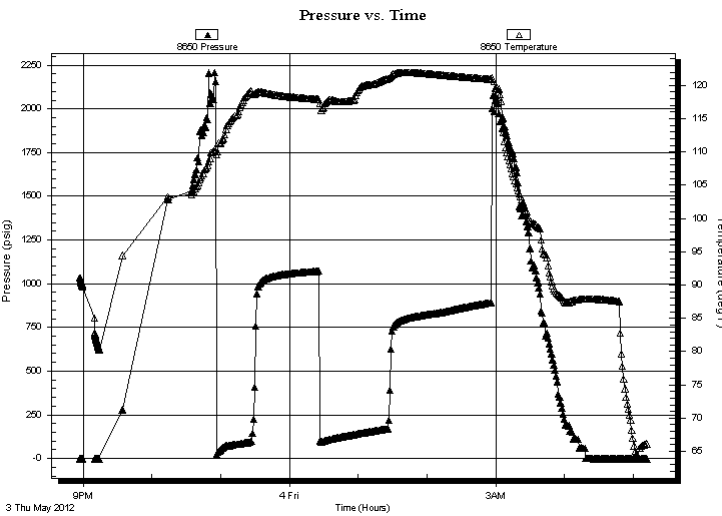
GENERAL INFORMATION:

Formation: Johnson		Test Type: Conventional Bottom Hole (Reset)
Deviated: No Whipstock: ft (KB)		Tester: Jace McKinney
Time Tool Opened: 23:02:00		Unit No: 46
Time Test Ended: 05:17:30		
Interval: 4268.00 ft (KB) To 4330.00 ft (KB) (TVD)		Reference Elevations: 2637.00 ft (KB)
Total Depth: 4330.00 ft (KB) (TVD)		2631.00 ft (CF)
Hole Diameter: 7.88 inches	Hole Condition: Fair	KB to GR/CF: 6.00 ft

Serial #: 8650 Outside

Press @ Run Depth: psig @ 4269.00 ft (KB)	Capacity: 8000.00 psig
Start Date: 2012.05.03 End Date: 2012.05.04	Last Calib.: 2012.05.04
Start Time: 20:56:50 End Time: 05:11:45	Time On Btm:
	Time Off Btm:

TEST COMMENT: B.O.B. in 13 min.
Bled off for 5 min. Built to 1 1/2" return blow
B.O.B. in 4 min.
Bled off for 5 min. Built to 8" return blow



PRESSURE SUMMARY

Time (Min.)	Pressure (psig)	Temp (deg F)	Annotation

Recovery

Length (ft)	Description	Volume (bbl)
0.00	530 Feet Gas In Pipe	0.00
123.00	mogo 5%M 15%G 80%O	0.60
128.00	gco 50%G 0%O	1.79
219.00	100% Clean Oil	3.07

Gas Rates

	Choke (inches)	Pressure (psig)	Gas Rate (Mcf/d)

* Recovery from multiple tests



**TRILOBITE
TESTING, INC.**

DRILL STEM TEST REPORT

TOOL DIAGRAM

Brito Oil Company Inc.

7-15s-32w Logan,KS

1700 N Waterfront PKWY
BLDG 300 Suite C
Wichita KS 67206
ATTN: Phil Askey

Fairleigh 'D' #1-7

Job Ticket: 45958

DST#: 6

Test Start: 2012.05.03 @ 20:56:00

Tool Information

Drill Pipe:	Length: 4135.63 ft	Diameter: 3.80 inches	Volume: 58.01 bbl	Tool Weight: 1500.00 lb
Heavy Wt. Pipe:	Length: 0.00 ft	Diameter: 0.00 inches	Volume: 0.00 bbl	Weight set on Packer: 30000.00 lb
Drill Collar:	Length: 123.29 ft	Diameter: 2.25 inches	Volume: 0.61 bbl	Weight to Pull Loose: 85000.00 lb
			<u>Total Volume: 58.62 bbl</u>	Tool Chased 0.00 ft
Drill Pipe Above KB:	10.92 ft			String Weight: Initial 56000.00 lb
Depth to Top Packer:	4268.00 ft			Final 60000.00 lb
Depth to Bottom Packer:	ft			
Interval between Packers:	62.00 ft			
Tool Length:	82.00 ft			
Number of Packers:	2	Diameter: 6.75 inches		

Tool Comments:

Tool Description	Length (ft)	Serial No.	Position	Depth (ft)	Accum. Lengths
------------------	-------------	------------	----------	------------	----------------

Change Over Sub	1.00			4249.00	
Shut In Tool	5.00			4254.00	
Hydraulic tool	5.00			4259.00	
Packer	5.00			4264.00	20.00 Bottom Of Top Packer
Packer	4.00			4268.00	
Stubb	1.00			4269.00	
Recorder	0.00	8675	Inside	4269.00	
Recorder	0.00	8650	Outside	4269.00	
Perforations	24.00			4293.00	
Change Over Sub	1.00			4294.00	
Drill Pipe	32.00			4326.00	
Change Over Sub	1.00			4327.00	
Bullnose	3.00			4330.00	62.00 Bottom Packers & Anchor

Total Tool Length: 82.00



**TRILOBITE
TESTING, INC.**

DRILL STEM TEST REPORT

FLUID SUMMARY

Brito Oil Company Inc.

7-15s-32w Logan,KS

1700 N Waterfront PKWY
BLDG 300 Suite C
Wichita KS 67206
ATTN: Phil Askey

Fairleigh 'D' #1-7

Job Ticket: 45958

DST#: 6

Test Start: 2012.05.03 @ 20:56:00

Mud and Cushion Information

Mud Type: Gel Chem
Mud Weight: 9.00 lb/gal
Viscosity: 56.00 sec/qt
Water Loss: 7.19 in³
Resistivity: ohm.m
Salinity: 4000.00 ppm
Filter Cake: 1.00 inches

Cushion Type:
Cushion Length: ft
Cushion Volume: bbl
Gas Cushion Type:
Gas Cushion Pressure: psig

Oil API: 30 deg API
Water Salinity: ppm

Recovery Information

Recovery Table

Length ft	Description	Volume bbl
0.00	530 Feet Gas In Pipe	0.000
123.00	mcgo 5%M 15%G 80%O	0.605
128.00	gco 50%G 0%O	1.793
219.00	100% Clean Oil	3.072

Total Length: 470.00 ft Total Volume: 5.470 bbl

Num Fluid Samples: 0

Num Gas Bombs: 0

Serial #:

Laboratory Name:

Laboratory Location:

Recovery Comments: API: 30 @ 60 F = 30

Serial #: 8675

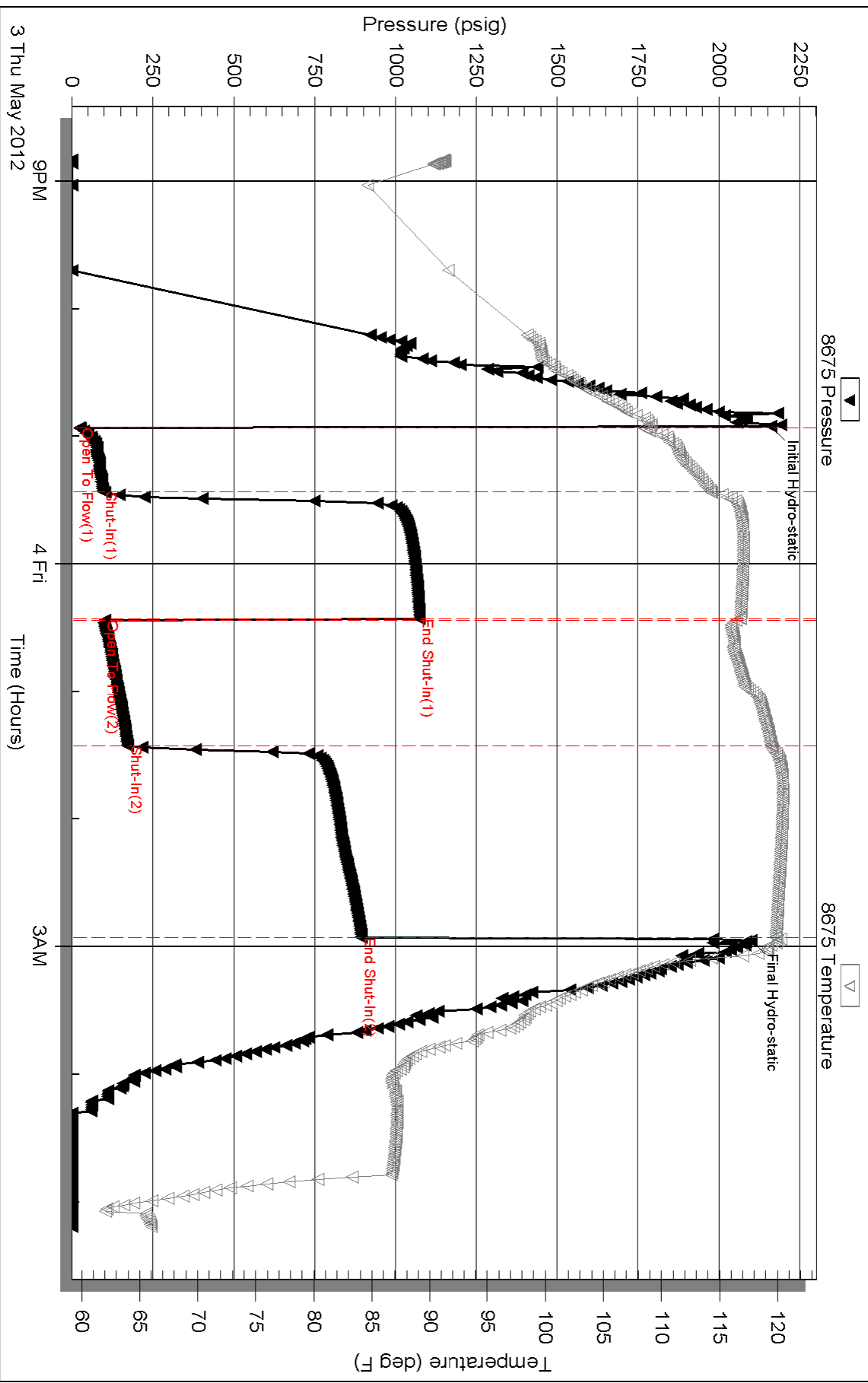
Inside

Brito Oil Company Inc.

Fairleigh 'D' #1-7

DST Test Number: 6

Pressure vs. Time

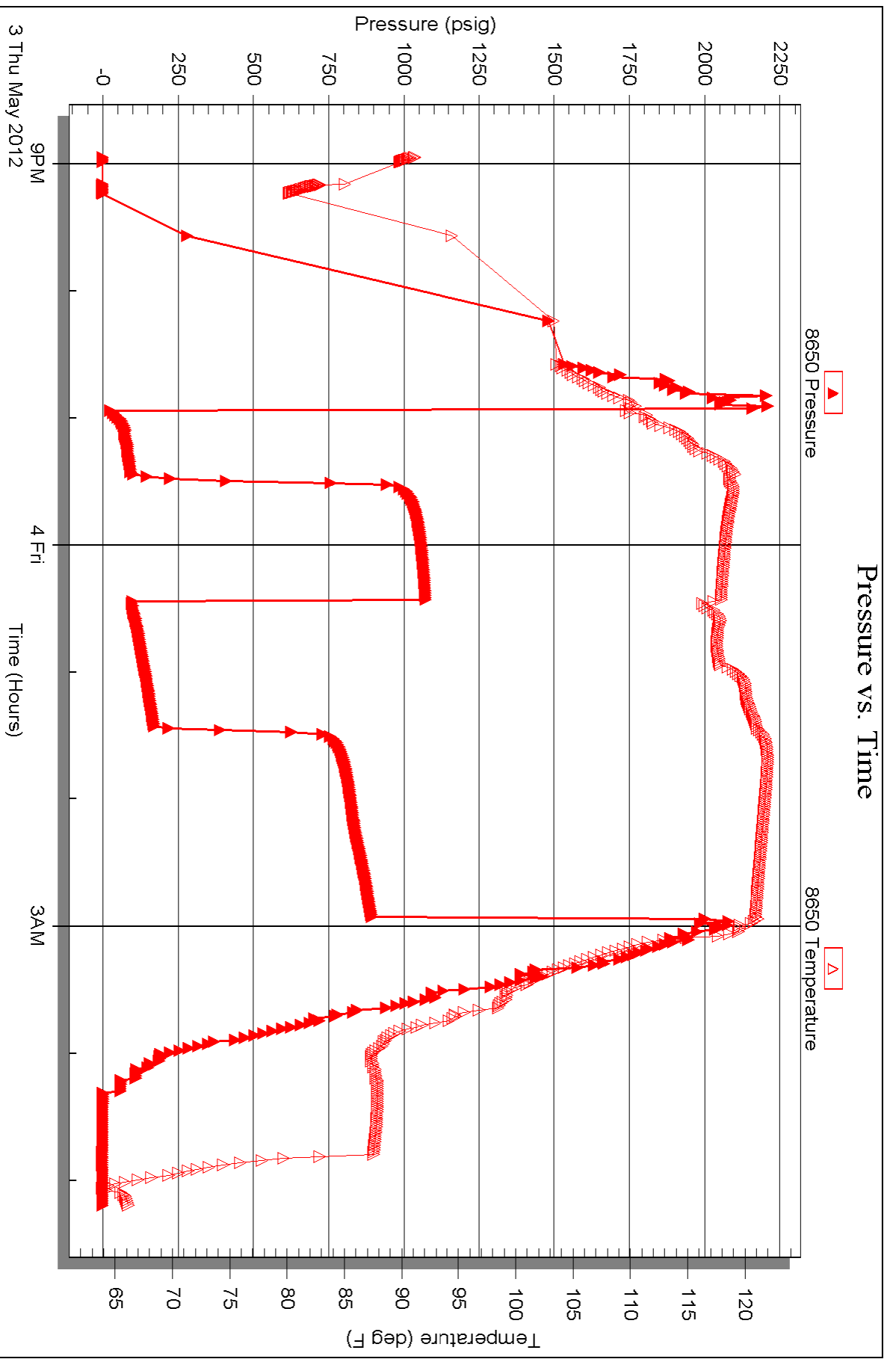


Serial #: 8650

Outside Brito Oil Company Inc.

Fairleigh 'D' #1-7

DST Test Number: 6





TRILOBITE TESTING INC.

P.O. Box 1733 • Hays, Kansas 67601

Test Ticket

NO. **45953**

4/10

Well Name & No. Fairleigh 'D' 1-7 Test No. 1 Date 4/29/12
 Company Brito Oil Company Inc Elevation 2736 KB 2731 GL
 Address 1700 N Waterfront Pkwy BLDG 300 Suite C Wichita KS 67206
 Co. Rep / Geo. Phil Asbey Rig WW Rig 2
 Location: Sec. 7 Twp. 15s Rge. 32w Co. Logan State KS

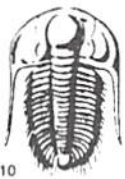
Interval Tested 3774 - 3800 Zone Tested Kansas City "E"
 Anchor Length 26 Drill Pipe Run 3664.39 Mud Wt. 8.7
 Top Packer Depth 3770 Drill Collars Run 123.29 Vis 67
 Bottom Packer Depth 3774 Wt. Pipe Run _____ WL 8.0
 Total Depth 3800 Chlorides 3,200 ppm System LCM 4
 Blow Description Built to 2" below
No return below
Built to weak surface below
No return below

Rec	Feet of	%gas	%oil	%water	%mud
<u>70</u>	<u>Feet of maw</u>			<u>70</u>	<u>30</u>
<u>0</u>	<u>Feet of Bil spots in tool</u>				

Rec Total 70 BHT 110 Gravity _____ API RW .25 @ 55 °F Chlorides 35,000 ppm
 (A) Initial Hydrostatic 1,843 Test 1150 T-On Location 19:30
 (B) First Initial Flow 15 Jars _____ T-Started 20:20
 (C) First Final Flow 31 Safety Joint _____ T-Open 22:17
 (D) Initial Shut-In 761 Circ Sub N/C T-Pulled 1:47
 (E) Second Initial Flow 41 Hourly Standby _____ T-Out 3:17
 (F) Second Final Flow 67 Mileage 65 RT 100.75 Comments _____
 (G) Final Shut-In 636 Sampler _____
 (H) Final Hydrostatic 1,789 Straddle _____ Ruined Shale Packer _____
 Shale Packer _____ Ruined Packer _____
 Extra Packer _____ Extra Copies _____
 Initial Open 30 Extra Recorder _____ Sub Total 0
 Initial Shut-In 60 Day Standby _____ Total 1250.75
 Final Flow 60 Accessibility _____ MP/DST Disc't _____
 Final Shut-In 60 Sub Total 1250.75

Approved By Phil Asbey Our Representative [Signature]

TriLOBITE TESTING Inc. shall not be liable for damaged of any kind of the property or personnel of the one for whom a test is made, or for any loss suffered or sustained, directly or indirectly, through the use of its equipment, or its statements or opinion concerning the results of any test, tools lost or damaged in the hole shall be paid for at cost by the party for whom the test is made.



TRILOBITE TESTING INC.

P.O. Box 1733 • Hays, Kansas 67601

Test Ticket

NO. 45954

Well Name & No. Fairleigh 'D' 1-7 Test No. 2 Date 4/30/12
 Company Brito Oil Company Inc. Elevation 2736 KB 2731 GL
 Address 1700 N Waterfront Plwy BLDG 300 Suite C Wichita KS 67206
 Co. Rep / Geo. Phil Askey Rig WW Rig 2
 Location: Sec. 7 Twp. 15S Rge. 32W Co. Logan State KS

Interval Tested 3859 - 3900 Zone Tested Kansas City "H"
 Anchor Length 41 Drill Pipe Run 3725 Mud Wt. 9.0
 Top Packer Depth 3855 Drill Collars Run 123 Vis 56
 Bottom Packer Depth 3859 Wt. Pipe Run WL 9.6
 Total Depth 3900 Chlorides 3,400 ppm System LCM 2

Blow Description Built to 2 1/4" below
No return below
Built to 3 1/4" below
No return below

Rec	Feet of	%gas	%oil	%water	%mud
<u>155</u>	<u>10CM with oil spots</u>			<u>40</u>	<u>60</u>
Rec	Feet of	%gas	%oil	%water	%mud
Rec	Feet of	%gas	%oil	%water	%mud
Rec	Feet of	%gas	%oil	%water	%mud
Rec	Feet of	%gas	%oil	%water	%mud

Rec Total 155 BHT 108 Gravity API RW 20 @ 80 °F Chlorides 30,000 ppm

(A) Initial Hydrostatic 1,884 Test 1150 T-On Location 11:55
 (B) First Initial Flow 17 Jars T-Started 12:25
 (C) First Final Flow 48 Safety Joint T-Open 13:58
 (D) Initial Shut-In 1,128 Circ Sub N/C T-Pulled 17:13
 (E) Second Initial Flow 50 Hourly Standby T-Out 18:51
 (F) Second Final Flow 84 Mileage 65 RT 100.75 Comments
 (G) Final Shut-In 1,083 Sampler
 (H) Final Hydrostatic 1,854 Straddle Ruined Shale Packer
 Shale Packer Ruined Packer

Initial Open 30 Extra Packer Extra Copies
 Initial Shut-In 45 Extra Recorder Sub Total 0
 Final Flow 60 Day Standby Total 1250.75
 Final Shut-In 60 Accessibility MP/DST Disc't
 Sub Total 1250.75

Approved By Phil Askey Our Representative

TriLOBITE TESTING INC. shall not be liable for damaged of any kind of the property or personnel of the one for whom a test is made, or for any loss suffered or sustained, directly or indirectly, through the use of its equipment, or its statements or opinion concerning the results of any test, tools lost or damaged in the hole shall be paid for at cost by the party for whom the test is made.



TRILOBITE TESTING INC.

P.O. Box 1733 • Hays, Kansas 67601

Test Ticket

NO. 45955

Well Name & No. Fairleigh 'D' 1-2 Test No. 3 Date 5/1/12
 Company Barto Oil Company Inc. Elevation 2736 KB 2731 GL
 Address 1700 N Waterfront Pkwy BLDG 300 Suite C Wichita KS 67206
 Co. Rep / Geo. Phil Askey Rig WW Rig 2
 Location: Sec. 7 Twp. 15s Rge. 32w Co. Logan State KS

Interval Tested 3912 - 3953 Zone Tested Kansas City "I-J"
 Anchor Length 41 Drill Pipe Run 3789 Mud Wt. 9.0
 Top Packer Depth 3908 Drill Collars Run 123 Vis 56
 Bottom Packer Depth 3912 Wt. Pipe Run 0 WL 9.6
 Total Depth 3953 Chlorides 3,400 ppm System LCM 4

Blow Description B.O.B. in 11 min.
Bled off for 5 min. No return below
B.O.B. in 16 min.

Bled off for 5 min. No return below

Rec	Feet of	%gas	%oil	%water	%mud
<u>510</u>	<u>water with oil spots</u>		<u>100</u>		
Rec	Feet of	%gas	%oil	%water	%mud
Rec	Feet of	%gas	%oil	%water	%mud
Rec	Feet of	%gas	%oil	%water	%mud

Rec Total 510 BHT 117 Gravity — API RW .15 @ 60 °F Chlorides 55,000 ppm

(A) Initial Hydrostatic	<u>1,920</u>	<input checked="" type="checkbox"/> Test	<u>1150</u>	T-On Location	<u>2:45</u>
(B) First Initial Flow	<u>25</u>	<input type="checkbox"/> Jars		T-Started	<u>3:45</u>
(C) First Final Flow	<u>176</u>	<input type="checkbox"/> Safety Joint		T-Open	<u>5:33</u>
(D) Initial Shut-In	<u>985</u>	<input checked="" type="checkbox"/> Circ Sub <u>WC</u>		T-Pulled	<u>8:34</u>
(E) Second Initial Flow	<u>178</u>	<input type="checkbox"/> Hourly Standby		T-Out	<u>10:10</u>
(F) Second Final Flow	<u>280</u>	<input checked="" type="checkbox"/> Mileage <u>65 AT</u>	<u>100.75</u>	Comments	
(G) Final Shut-In	<u>978</u>	<input type="checkbox"/> Sampler			
(H) Final Hydrostatic	<u>1,872</u>	<input type="checkbox"/> Straddle		<input type="checkbox"/> Ruined Shale Packer	

Initial Open 30
 Initial Shut-In 60
 Final Flow 30
 Final Shut-In 60

Shale Packer
 Extra Packer
 Extra Recorder
 Day Standby
 Accessibility

Sub Total 1250.75

Ruined Packer
 Extra Copies
 Sub Total 0
 Total 1250.75
 MP/DST Disc't

Approved By Phil Askey Our Representative [Signature]

Trilobite Testing Inc. shall not be liable for damaged of any kind of the property or personnel of the one for whom a test is made, or for any loss suffered or sustained, directly or indirectly, through the use of its equipment, or its statements or opinion concerning the results of any test, tools lost or damaged in the hole shall be paid for at cost by the party for whom the test is made.



TRIOBITE TESTING INC.

P.O. Box 1733 • Hays, Kansas 67601

Test Ticket

NO. 45956

Well Name & No. Fairleigh 'D' 1-7 Test No. 4 Date 5/2/12
 Company Brito Oil Company Inc Elevation 2736 KB 2731 GL
 Address 1700 N Waterfront PKWY BLDG 300 Suite C Wichita KS 67206
 Co. Rep / Geo. Phil Asbery Rig EWB Rig 2
 Location: Sec. 7 Twp. 15S Rge. 32W Co. Logan State KS

Interval Tested 4080 - 4160 Zone Tested Marmaton
 Anchor Length 80 Drill Pipe Run 3944 Mud Wt. 9.0
 Top Packer Depth 4076 Drill Collars Run 123 Vis 51
 Bottom Packer Depth 4080 Wt. Pipe Run WL 8.8
 Total Depth 4160 Chlorides 4,000 ppm System LCM 2
 Blow Description Built to 6 1/2" below
No return below
B.O.B. in 31 min.

Bled off for 5 min. Built to 1/4" return below. Dickin 45 min.

Rec	Feet of	%gas	%oil	%water	%mud
<u>60</u>	<u>1000 O.I</u>	<u>100</u>			
<u>145</u>	<u>6WOM</u>	<u>10</u>	<u>30</u>	<u>10</u>	<u>50</u>
<u>190</u>	<u>6IP</u>				

Rec Total 205 BHT 112 Gravity 35 API RW — @ — ° F Chlorides ppm

(A) Initial Hydrostatic <u>2,033</u>	<input checked="" type="checkbox"/> Test <u>1250</u>	T-On Location <u>8:10</u>
(B) First Initial Flow <u>21</u>	<input type="checkbox"/> Jars	T-Started <u>8:15</u>
(C) First Final Flow <u>68</u>	<input type="checkbox"/> Safety Joint	T-Open <u>9:57</u>
(D) Initial Shut-In <u>1,205</u>	<input checked="" type="checkbox"/> Circ Sub <u>N/C</u>	T-Pulled <u>13:57</u>
(E) Second Initial Flow <u>75</u>	<input type="checkbox"/> Hourly Standby	T-Out <u>16:00</u>
(F) Second Final Flow <u>95</u>	<input checked="" type="checkbox"/> Mileage <u>65RT</u> 100.75	Comments
(G) Final Shut-In <u>1,184</u>	<input type="checkbox"/> Sampler	
(H) Final Hydrostatic <u>1,987</u>	<input type="checkbox"/> Straddle	<input type="checkbox"/> Ruined Shale Packer
	<input type="checkbox"/> Shale Packer	<input type="checkbox"/> Ruined Packer
Initial Open <u>30</u>	<input type="checkbox"/> Extra Packer	<input type="checkbox"/> Extra Copies
Initial Shut-In <u>60</u>	<input type="checkbox"/> Extra Recorder	Sub Total <u>0</u>
Final Flow <u>60</u>	<input type="checkbox"/> Day Standby	Total <u>1350.75</u>
Final Shut-In <u>90</u>	<input type="checkbox"/> Accessibility	MP/DST Disc't
	Sub Total <u>1350.75</u>	

Approved By Phil Asbery Our Representative [Signature]
 Triobite Testing Inc. shall not be liable for damaged or any kind of the property or personnel of the one for whom a test is made, or for any loss suffered or sustained, directly or indirectly, through the use of its equipment, or its statements or opinion concerning the results of any test. Tools lost or damaged in the hole shall be paid for at cost by the party for whom the test is made.



TRILOBITE TESTING INC.

P.O. Box 1733 • Hays, Kansas 67601

Test Ticket

NO. 45957

4/10

Well Name & No. Fairleigh 'D' 1-2 Test No. 5 Date 5/3/12
 Company Brito Oil Company Inc Elevation 2736 KB 2731 GL
 Address 1700 N Waterfront Pkwy Bldg 300 suite 2 Wichita KS 67206
 Co. Rep / Geo. Phil Askey Rig WW Rig 2
 Location: Sec. 7 Twp. 15S Rge. 32w Co. Logan State KS

Interval Tested 4182 - 4270 Zone Tested Pawnee, Fort Scott, Cherokee
 Anchor Length 88 Drill Pipe Run 4069 Mud Wt. 9.1
 Top Packer Depth 4178 Drill Collars Run 123 Vis 58
 Bottom Packer Depth 4182 Wt. Pipe Run _____ WL 8.0
 Total Depth 4270 Chlorides 5,400 ppm System LCM 1

Blow Description Built to 2" below
No return below
Built to 1 3/4" below
No return below

Rec	Feet of	%gas	%oil	%water	%mud
<u>70</u>	<u>CCM</u>	<u>10</u>		<u>90</u>	
Rec	Feet of	%gas	%oil	%water	%mud
Rec	Feet of	%gas	%oil	%water	%mud
Rec	Feet of	%gas	%oil	%water	%mud
Rec	Feet of	%gas	%oil	%water	%mud

Rec Total 70 BHT 111 Gravity _____ API RW _____ @ _____ °F Chlorides _____ ppm

(A) Initial Hydrostatic <u>2,121</u>	<input checked="" type="checkbox"/> Test <u>1250</u>	T-On Location <u>6:35</u>
(B) First Initial Flow <u>21</u>	<input type="checkbox"/> Jars _____	T-Started <u>7:00</u>
(C) First Final Flow <u>36</u>	<input type="checkbox"/> Safety Joint _____	T-Open <u>8:57</u>
(D) Initial Shut-In <u>391</u>	<input checked="" type="checkbox"/> Circ Sub <u>N/C</u>	T-Pulled <u>10:58</u>
(E) Second Initial Flow <u>44</u>	<input type="checkbox"/> Hourly Standby _____	T-Out <u>12:35</u>
(F) Second Final Flow <u>52</u>	<input checked="" type="checkbox"/> Mileage <u>65 RT</u> 100.75	Comments _____
(G) Final Shut-In <u>213</u>	<input type="checkbox"/> Sampler _____	
(H) Final Hydrostatic <u>2,025</u>	<input type="checkbox"/> Straddle _____	<input type="checkbox"/> Ruined Shale Packer _____
Initial Open <u>30</u>	<input type="checkbox"/> Shale Packer _____	<input type="checkbox"/> Ruined Packer _____
Initial Shut-In <u>30</u>	<input type="checkbox"/> Extra Packer _____	<input type="checkbox"/> Extra Copies _____
Final Flow <u>30</u>	<input type="checkbox"/> Extra Recorder _____	Sub Total <u>0</u>
Final Shut-In <u>30</u>	<input type="checkbox"/> Day Standby _____	Total <u>1350.75</u>
	<input type="checkbox"/> Accessibility _____	MP/DST Disc't _____
	Sub Total <u>1350.75</u>	

Approved By Phil Askey Our Representative [Signature]
 Trilobite Testing Inc. shall not be liable for damaged of any kind of the property or personnel of the one for whom a test is made, or for any loss suffered or sustained, directly or indirectly, through the use of its equipment, or its statements or opinion concerning the results of any test, tools lost or damaged in the hole shall be paid for at cost by the party for whom the test is made.



TRILOBITE TESTING INC.

P.O. Box 1733 • Hays, Kansas 67601

Test Ticket

NO. **45958**

4/10

Well Name & No. Fairleigh 'D' 1-2 Test No. 6 Date 5/3/12 5/4/12
 Company Brito Oil Company Inc Elevation 2736 KB 2731 GL
 Address 1200 N Waterfront Pkwy Bldg 300 Suite C Wichita KS 67206
 Co. Rep / Geo. Phil Ashby Rig WW Rig 2
 Location: Sec. 7 Twp. 15S Rge. 32W Co. Logan State KS

Interval Tested 4268 - 4330 Zone Tested Johnson
 Anchor Length 62 Drill Pipe Run 4135 Mud Wt. 9.0
 Top Packer Depth 4264 Drill Collars Run 123 Vis 56
 Bottom Packer Depth 4268 Wt. Pipe Run WL 7.2
 Total Depth 4330 Chlorides 4,000 ppm System LCM 1

Blow Description B.O.B in 13 min
Bled off for 5 min. Built to 1 1/2" return below
B.O. B. in 4 min.

Bled off for 5 min. Built to 8" return below

Rec	Feet of	%gas	%oil	%water	%mud
<u>0</u>	<u>530 Feet Gas In Pipe</u>				
<u>219</u>	<u>Clean Oil</u>		<u>100</u>		
<u>128</u>	<u>600</u>	<u>50</u>	<u>50</u>		
<u>123</u>	<u>MC 60</u>	<u>15</u>	<u>80</u>		<u>5</u>

Rec Total 470 BHT 120 Gravity 30 API RW - @ - ° F Chlorides ppm

(A) Initial Hydrostatic 2,162 Test 1250 T-On Location 20:30
 (B) First Initial Flow 24 Jars T-Started 20:56
 (C) First Final Flow 97 Safety Joint T-Open 23:02
 (D) Initial Shut-In 1,074 Circ Sub N/C T-Pulled 3:02
 (E) Second Initial Flow 101 Hourly Standby T-Out 5:17
 (F) Second Final Flow 173 Mileage 65AT 100.75
 (G) Final Shut-In 895 Sampler
 (H) Final Hydrostatic 2,100 Straddle Ruined Shale Packer
 Shale Packer Ruined Packer

Initial Open 30 Extra Packer Extra Copies
 Initial Shut-In 60 Extra Recorder Sub Total 0
 Final Flow 60 Day Standby Total 1350.75
 Final Shut-In 90 Accessibility MP/DST Disc't
 Sub Total 1350.75

Approved By Phil Ashby Our Representative [Signature]

Trilobite Testing Inc. shall not be liable for damaged of any kind of the property or personnel of the one for whom a test is made, or for any loss suffered or sustained, directly or indirectly, through the use of its equipment, or its statements or opinion concerning the results of any test, tools lost or damaged in the hole shall be paid for at cost by the party for whom the test is made.