



## DRILL STEM TEST REPORT

Prepared For: **Herman L. Loeb, LLC**

PO Box 838  
Lawrenceville IL 62439

ATTN: Jon Christensen

**Peters D #3-10**

**10-16s-26w Ness,KS**

Start Date: 2012.06.16 @ 15:35:15

End Date: 2012.06.17 @ 00:13:45

Job Ticket #: 49253                      DST #: 3

Trilobite Testing, Inc  
PO Box 362 Hays, KS 67601  
ph: 785-625-4778 fax: 785-625-5620

Printed: 2012.06.20 @ 11:04:11



**TRILOBITE TESTING, INC.**

# DRILL STEM TEST REPORT

Herman L. Loeb, LLC  
 PO Box 838  
 Lawrenceville IL 62439  
 ATTN: Jon Christensen

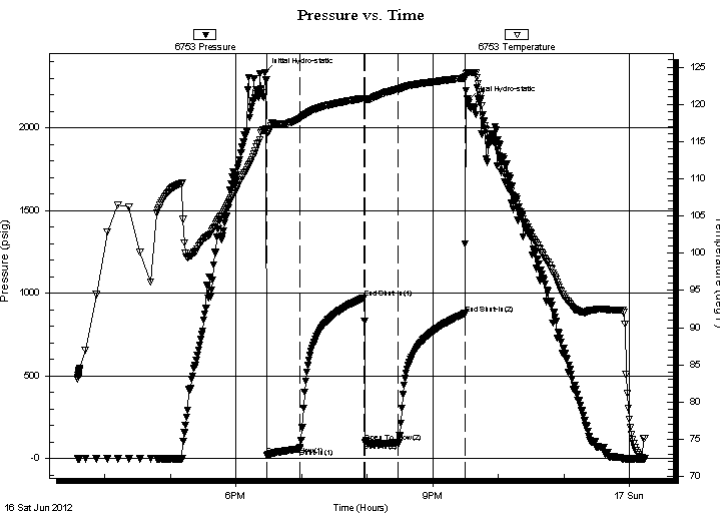
**10-16s-26w Ness, KS**  
**Peters D #3-10**  
 Job Ticket: 49253 **DST#: 3**  
 Test Start: 2012.06.16 @ 15:35:15

## GENERAL INFORMATION:

Formation: **Miss.**  
 Deviated: No Whipstock: ft (KB)  
 Test Type: Conventional Bottom Hole (Reset)  
 Time Tool Opened: 18:28:45  
 Tester: Brett Dickinson  
 Time Test Ended: 00:13:45  
 Unit No: 59  
**Interval: 4544.00 ft (KB) To 4565.00 ft (KB) (TVD)**  
 Reference Elevations: 2632.00 ft (KB)  
 Total Depth: 4565.00 ft (KB) (TVD)  
 2621.00 ft (CF)  
 Hole Diameter: 7.88 inches  
 Hole Condition: Fair  
 KB to GR/CF: 11.00 ft

**Serial #: 6753 Inside**  
 Press @ Run Depth: 99.77 psig @ 4545.00 ft (KB) Capacity: 8000.00 psig  
 Start Date: 2012.06.16 End Date: 2012.06.17 Last Calib.: 2012.06.17  
 Start Time: 15:35:20 End Time: 00:13:45 Time On Btm: 2012.06.16 @ 18:26:45  
 Time Off Btm: 2012.06.16 @ 21:32:15

**TEST COMMENT:** IF-4" blow  
 IS- No blow  
 FF- No blow for 15 min 1/8" blow  
 FS- No blow



## PRESSURE SUMMARY

Time (Min.)	Pressure (psig)	Temp (deg F)	Annotation
0	2337.05	116.54	Initial Hydro-static
2	20.39	116.11	Open To Flow (1)
32	60.13	118.10	Shut-In(1)
91	972.96	120.80	End Shut-In(1)
92	100.61	120.61	Open To Flow (2)
122	99.77	122.02	Shut-In(2)
183	877.29	123.54	End Shut-In(2)
186	2164.55	124.24	Final Hydro-static

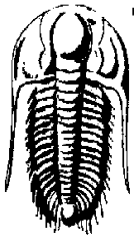
## Recovery

Length (ft)	Description	Volume (bbl)
75.00	GSMWCO 25%G 55%O 10%W 10%M	0.37
60.00	SOCM 10%O 90%M	0.30
15.00	VSGO 5%G 95%O	0.07

\* Recovery from multiple tests

## Gas Rates

Choke (inches)	Pressure (psig)	Gas Rate (Mcf/d)



# TRILOBITE TESTING, INC.

## DRILL STEM TEST REPORT

Herman L. Loeb, LLC

**10-16s-26w Ness, KS**

PO Box 838  
Lawrenceville IL 62439

**Peters D #3-10**

ATTN: Jon Christensen

Job Ticket: 49253

**DST#: 3**

Test Start: 2012.06.16 @ 15:35:15

### GENERAL INFORMATION:

Formation: **Miss.**

Deviated: No Whipstock: ft (KB)

Time Tool Opened: 18:28:45

Time Test Ended: 00:13:45

Test Type: Conventional Bottom Hole (Reset)

Tester: Brett Dickinson

Unit No: 59

**Interval: 4544.00 ft (KB) To 4565.00 ft (KB) (TVD)**

Reference Elevations: 2632.00 ft (KB)

Total Depth: 4565.00 ft (KB) (TVD)

2621.00 ft (CF)

Hole Diameter: 7.88 inches Hole Condition: Fair

KB to GR/CF: 11.00 ft

**Serial #: 8369 Outside**

Press @ Run Depth: psig @ 4545.00 ft (KB)

Capacity: 8000.00 psig

Start Date: 2012.06.16 End Date: 2012.06.17

Last Calib.: 2012.06.17

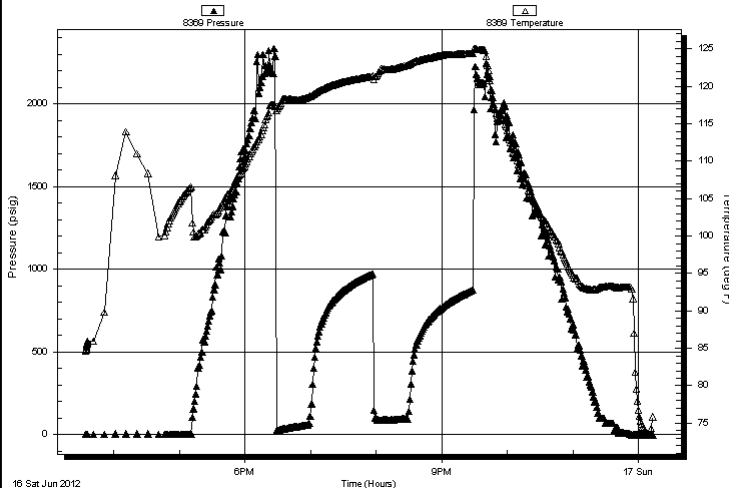
Start Time: 15:34:20 End Time: 00:13:15

Time On Btm:

Time Off Btm:

**TEST COMMENT:** IF-4" blow  
IS-No blow  
FF-No blow for 15 min 1/8" blow  
FS-No blow

Pressure vs. Time



### PRESSURE SUMMARY

Time (Min.)	Pressure (psig)	Temp (deg F)	Annotation

### Recovery

Length (ft)	Description	Volume (bbl)
75.00	GSMWCO 25%G 55%O 10%W 10%M	0.37
60.00	SOCM 10%O 90%M	0.30
15.00	VSGO 5%G 95%O	0.07

### Gas Rates

	Choke (inches)	Pressure (psig)	Gas Rate (Mcf/d)

\* Recovery from multiple tests



**TRILOBITE  
TESTING, INC.**

# DRILL STEM TEST REPORT

**TOOL DIAGRAM**

Herman L. Loeb, LLC

**10-16s-26w Ness, KS**

PO Box 838  
Lawrenceville IL 62439

**Peters D #3-10**

Job Ticket: 49253

**DST#: 3**

ATTN: Jon Christensen

Test Start: 2012.06.16 @ 15:35:15

## Tool Information

Drill Pipe:	Length: 4337.00 ft	Diameter: 3.80 inches	Volume: 60.84 bbl	Tool Weight: 2000.00 lb
Heavy Wt. Pipe:	Length: ft	Diameter: 2.70 inches	Volume: - bbl	Weight set on Packer: 25000.00 lb
Drill Collar:	Length: 210.00 ft	Diameter: 2.25 inches	Volume: 1.03 bbl	Weight to Pull Loose: 90000.00 lb
			<u>Total Volume: - bbl</u>	Tool Chased 0.00 ft
Drill Pipe Above KB:	26.00 ft			String Weight: Initial 85000.00 lb
Depth to Top Packer:	4544.00 ft			Final 85000.00 lb
Depth to Bottom Packer:	ft			
Interval between Packers:	21.00 ft			
Tool Length:	44.00 ft			
Number of Packers:	2	Diameter: 6.75 inches		

Tool Comments:

Tool Description	Length (ft)	Serial No.	Position	Depth (ft)	Accum. Lengths
------------------	-------------	------------	----------	------------	----------------

Change Over Sub	1.00			4522.00	
Shut In Tool	5.00			4527.00	
Hydraulic tool	5.00			4532.00	
Safety Joint	2.00			4534.00	
Packer	5.00			4539.00	23.00 Bottom Of Top Packer
Packer	5.00			4544.00	
Stubb	1.00			4545.00	
Recorder	0.00	6753	Inside	4545.00	
Recorder	0.00	8369	Outside	4545.00	
Perforations	2.00			4547.00	
Perforations	15.00			4562.00	
Bullnose	3.00			4565.00	21.00 Bottom Packers & Anchor

**Total Tool Length: 44.00**



**TRILOBITE  
TESTING, INC.**

# DRILL STEM TEST REPORT

**FLUID SUMMARY**

Herman L. Loeb, LLC

**10-16s-26w Ness, KS**

PO Box 838  
Lawrenceville IL 62439

**Peters D #3-10**

Job Ticket: 49253

**DST#: 3**

ATTN: Jon Christensen

Test Start: 2012.06.16 @ 15:35:15

## Mud and Cushion Information

Mud Type: Gel Chem

Cushion Type:

Oil API:

37 deg API

Mud Weight: 9.00 lb/gal

Cushion Length:

ft

Water Salinity:

ppm

Viscosity: 65.00 sec/qt

Cushion Volume:

bbbl

Water Loss: 7.59 in<sup>3</sup>

Gas Cushion Type:

Resistivity: ohm.m

Gas Cushion Pressure:

psig

Salinity: 2100.00 ppm

Filter Cake: inches

## Recovery Information

Recovery Table

Length ft	Description	Volume bbbl
75.00	GSMWCO 25%G 55%O 10%W 10%M	0.369
60.00	SOCM 10%O 90%M	0.295
15.00	VSGO 5%G 95%O	0.074

Total Length: 150.00 ft      Total Volume: 0.738 bbl

Num Fluid Samples: 0

Num Gas Bombs: 0

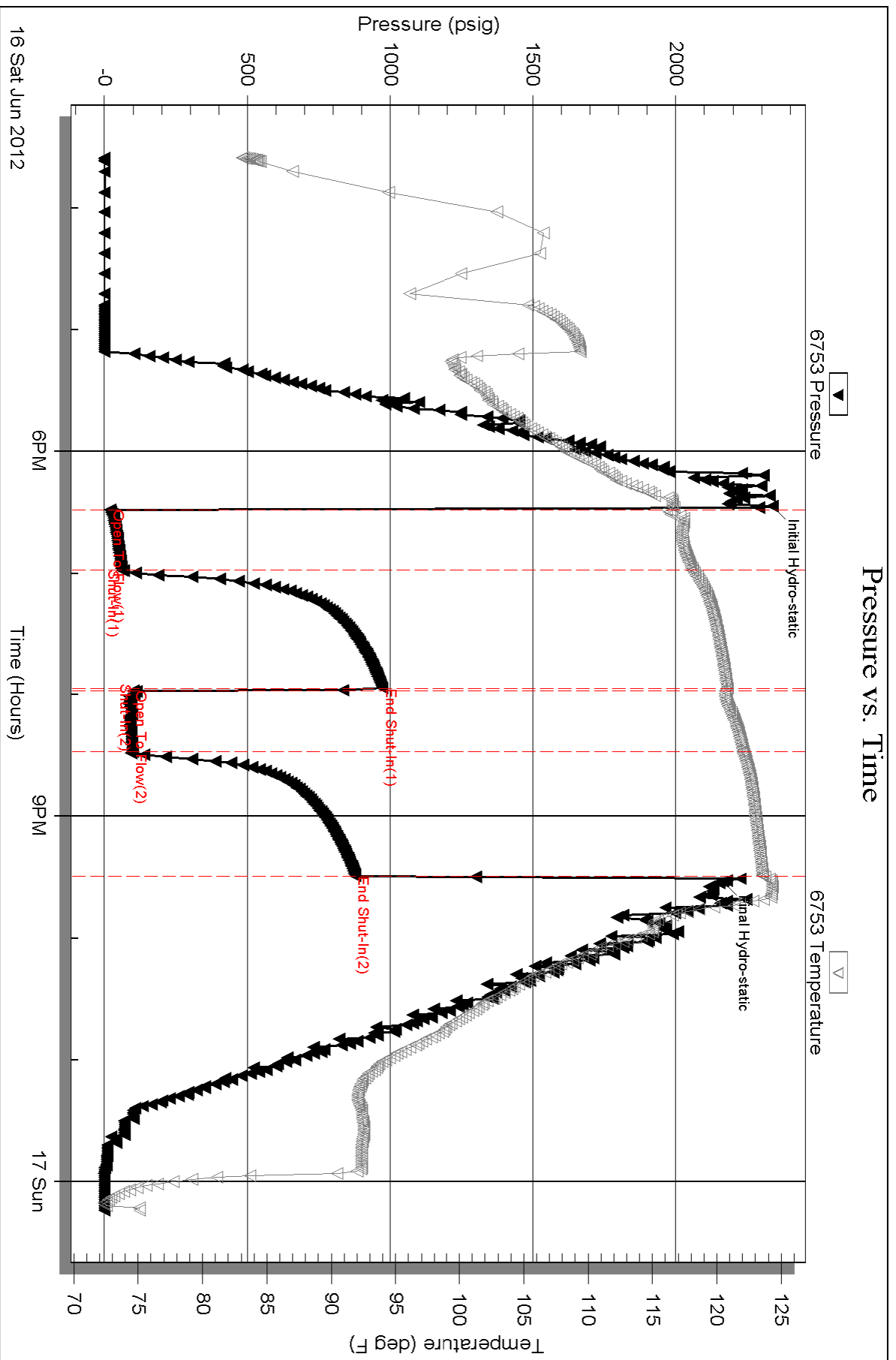
Serial #:

Laboratory Name:

Laboratory Location:

Recovery Comments:

# Pressure vs. Time



Serial #: 8369

Outside Herman L. Loeb, LLC

Peters D#3-10

DST Test Number: 3

