



DRILL STEM TEST REPORT

Prepared For: **Prospect Oil & Gas Corp.**

PO Box 837
Russell KS 67665+0837

ATTN: Randy Kilian

Bitter #1

11-16s-14w Barton,KS

Start Date: 2012.06.18 @ 22:46:05

End Date: 2012.06.19 @ 03:53:39

Job Ticket #: 47879 DST #: 1

Trilobite Testing, Inc
PO Box 362 Hays, KS 67601
ph: 785-625-4778 fax: 785-625-5620

Printed: 2012.06.26 @ 09:43:58



TRILOBITE TESTING, INC.

DRILL STEM TEST REPORT

Prospect Oil & Gas Corp.
 PO Box 837
 Russell KS 67665+0837
 ATTN: Randy Kilian

11-16s-14w Barton,KS

Bitter #1

Job Ticket: 47879

DST#: 1

Test Start: 2012.06.18 @ 22:46:05

GENERAL INFORMATION:

Formation: **Cong.**
 Deviated: No Whipstock: ft (KB)
 Time Tool Opened: 00:15:10
 Time Test Ended: 03:53:39
 Interval: **3371.00 ft (KB) To 3390.00 ft (KB) (TVD)**
 Total Depth: 3430.00 ft (KB) (TVD)
 Hole Diameter: 7.88 inches Hole Condition: Fair
 Test Type: Conventional Straddle (Initial)
 Tester: Andy Carreira
 Unit No: 39
 Reference Elevations: 1932.00 ft (KB)
 1925.00 ft (CF)
 KB to GR/CF: 7.00 ft

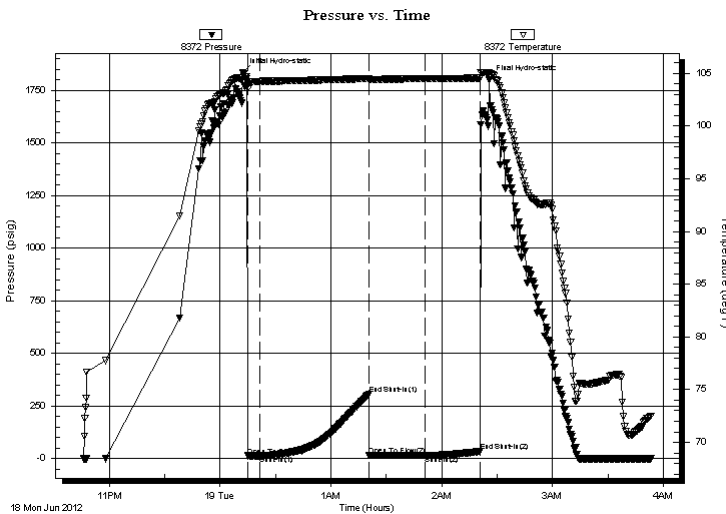
Serial #: 8372

Outside

Press @ Run Depth: 15.93 psig @ 3372.00 ft (KB) Capacity: 8000.00 psig
 Start Date: 2012.06.18 End Date: 2012.06.19 Last Calib.: 2012.06.19
 Start Time: 22:46:05 End Time: 03:53:40 Time On Btm: 2012.06.19 @ 00:12:20
 Time Off Btm: 2012.06.19 @ 02:25:50

TEST COMMENT: IF:(5min) Blow Died in 2 min.
 ISl:(60min) No Return
 FF:(30min) No Blow
 FSl:(30min) No Return

PRESSURE SUMMARY



| Time (Min.) | Pressure (psig) | Temp (deg F) | Annotation |
|-------------|-----------------|--------------|----------------------|
| 0 | 1834.97 | 104.62 | Initial Hydro-static |
| 3 | 12.79 | 103.57 | Open To Flow (1) |
| 10 | 13.10 | 104.25 | Shut-In(1) |
| 69 | 305.80 | 104.51 | End Shut-In(1) |
| 69 | 14.72 | 104.39 | Open To Flow (2) |
| 99 | 15.93 | 104.50 | Shut-In(2) |
| 129 | 34.19 | 104.56 | End Shut-In(2) |
| 134 | 1802.13 | 105.10 | Final Hydro-static |

Recovery

| Length (ft) | Description | Volume (bbl) |
|-------------|-------------|--------------|
| 1.00 | Mud | 0.01 |
| | | |
| | | |
| | | |
| | | |

Gas Rates

| Choke (inches) | Pressure (psig) | Gas Rate (Mcf/d) |
|----------------|-----------------|------------------|
| | | |



**TRILOBITE
TESTING, INC.**

DRILL STEM TEST REPORT

TOOL DIAGRAM

Prospect Oil & Gas Corp.

11-16s-14w Barton,KS

PO Box 837
Russell KS 67665+0837

Bitter #1

Job Ticket: 47879

DST#: 1

ATTN: Randy Kilian

Test Start: 2012.06.18 @ 22:46:05

Tool Information

| | | | | |
|---------------------------|--------------------|-----------------------|--------------------------------|------------------------------------|
| Drill Pipe: | Length: 3362.00 ft | Diameter: 3.80 inches | Volume: 47.16 bbl | Tool Weight: 3000.00 lb |
| Heavy Wt. Pipe: | Length: 0.00 ft | Diameter: 2.70 inches | Volume: 0.00 bbl | Weight set on Packer: 24000.00 lb |
| Drill Collar: | Length: 0.00 ft | Diameter: 2.25 inches | Volume: 0.00 bbl | Weight to Pull Loose: 44000.00 lb |
| | | | <u>Total Volume: 47.16 bbl</u> | Tool Chased 0.00 ft |
| Drill Pipe Above KB: | 14.00 ft | | | String Weight: Initial 38000.00 lb |
| Depth to Top Packer: | 3371.00 ft | | | Final 38000.00 lb |
| Depth to Bottom Packer: | 3390.00 ft | | | |
| Interval between Packers: | 19.00 ft | | | |
| Tool Length: | 86.00 ft | | | |
| Number of Packers: | 3 | Diameter: 6.75 inches | | |

Tool Comments:

| Tool Description | Length (ft) | Serial No. | Position | Depth (ft) | Accum. Lengths |
|---------------------------|--------------|------------|----------|------------|-------------------------------|
| Change Over Sub | 1.00 | | | 3349.00 | |
| Shut In Tool | 5.00 | | | 3354.00 | |
| Hydraulic tool | 5.00 | | | 3359.00 | |
| Safety Joint | 3.00 | | | 3362.00 | |
| Packer | 5.00 | | | 3367.00 | 23.00 Bottom Of Top Packer |
| Packer | 4.00 | | | 3371.00 | |
| Stubb | 1.00 | | | 3372.00 | |
| Recorder | 0.00 | 8017 | Inside | 3372.00 | |
| Recorder | 0.00 | 8372 | Outside | 3372.00 | |
| Perforations | 13.00 | | | 3385.00 | |
| Blank Off Sub | 1.00 | | | 3386.00 | |
| Blank Spacing | 4.00 | | | 3390.00 | 19.00 Tool Interval |
| Packer | 4.00 | | | 3394.00 | |
| Stubb | 1.00 | | | 3395.00 | |
| Perforations | 2.00 | | | 3397.00 | |
| Change Over Sub | 1.00 | | | 3398.00 | |
| Recorder | 0.00 | 8647 | Below | 3398.00 | |
| Drill Pipe | 32.00 | | | 3430.00 | |
| Change Over Sub | 1.00 | | | 3431.00 | |
| Bullnose | 3.00 | | | 3434.00 | 44.00 Bottom Packers & Anchor |
| Total Tool Length: | 86.00 | | | | |



**TRILOBITE
TESTING, INC.**

DRILL STEM TEST REPORT

FLUID SUMMARY

Prospect Oil & Gas Corp.

11-16s-14w Barton,KS

PO Box 837
Russell KS 67665+0837

Bitter #1

Job Ticket: 47879

DST#: 1

ATTN: Randy Kilian

Test Start: 2012.06.18 @ 22:46:05

Mud and Cushion Information

Mud Type: Gel Chem

Cushion Type:

Oil API:

deg API

Mud Weight: 9.00 lb/gal

Cushion Length:

ft

Water Salinity:

ppm

Viscosity: 55.00 sec/qt

Cushion Volume:

bbbl

Water Loss: 6.78 in³

Gas Cushion Type:

Resistivity: ohm.m

Gas Cushion Pressure:

psig

Salinity: 1900.00 ppm

Filter Cake: inches

Recovery Information

Recovery Table

| Length ft | Description | Volume bbl |
|--------------|-------------|---------------|
| 1.00 | Mud | 0.014 |

Total Length: 1.00 ft Total Volume: 0.014 bbl

Num Fluid Samples: 0

Num Gas Bombs: 0

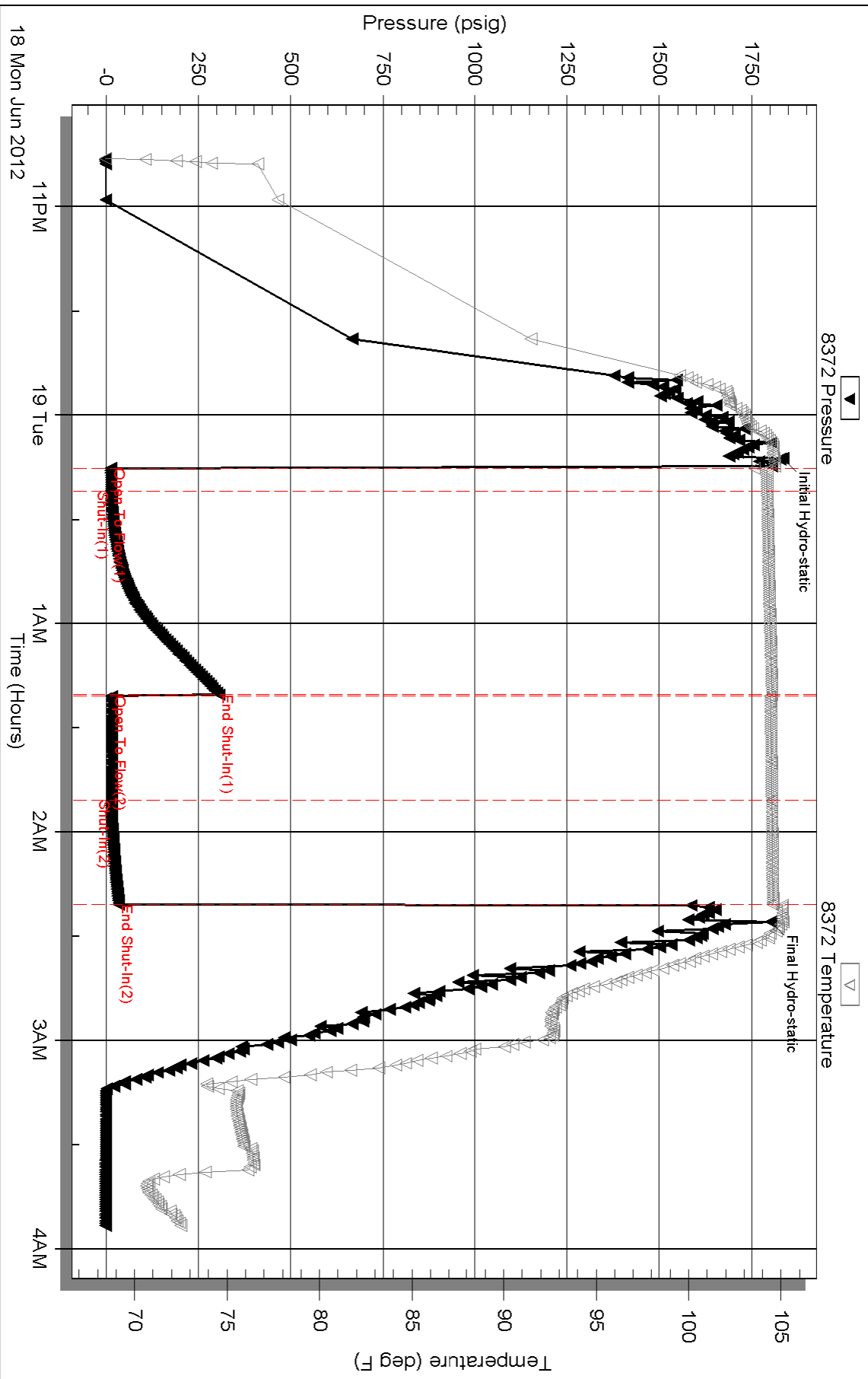
Serial #:

Laboratory Name:

Laboratory Location:

Recovery Comments:

Pressure vs. Time



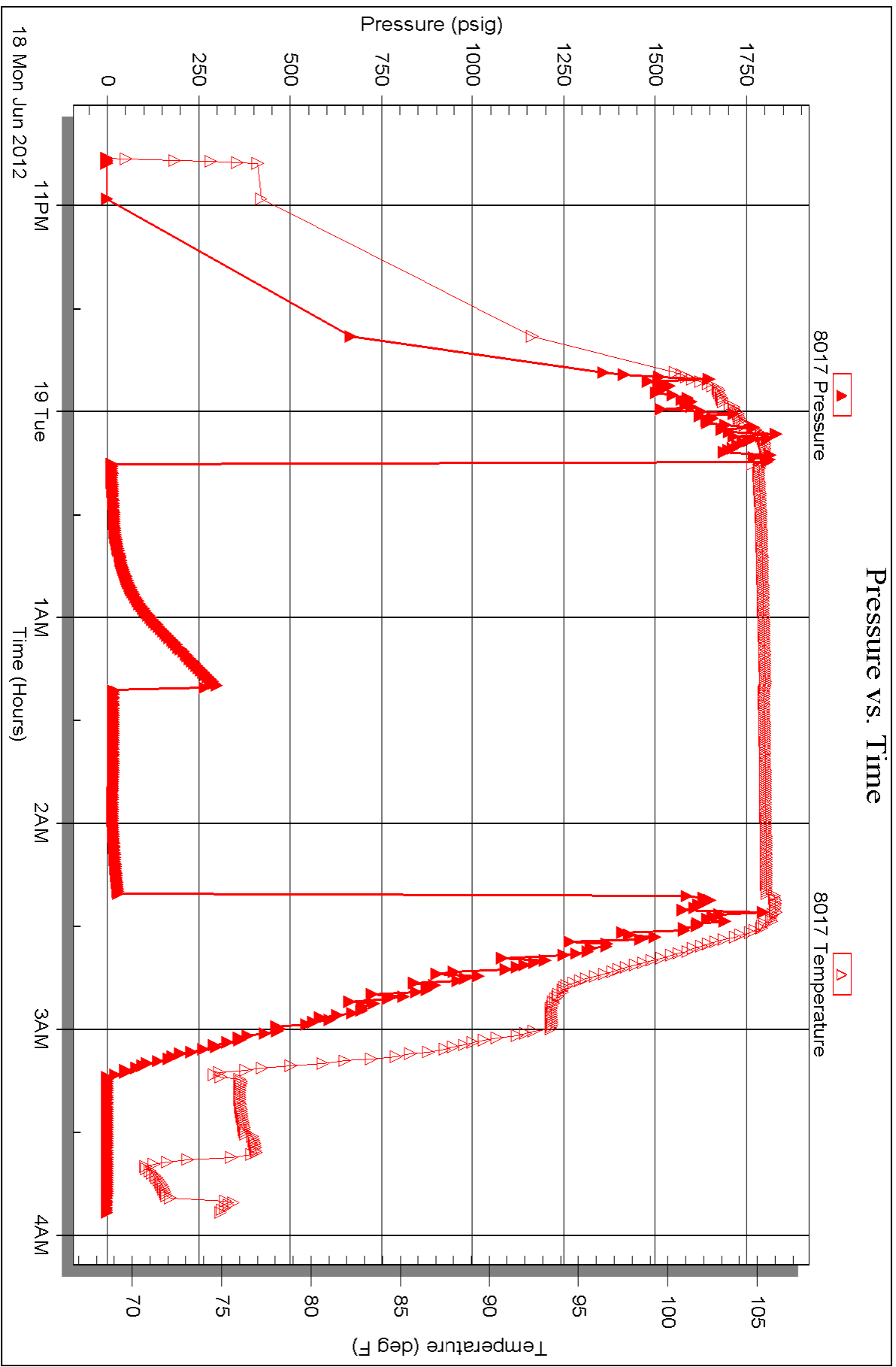
Serial #: 8017

Inside

Prospect Oil & Gas Corp.

Bitter #1

DST Test Number: 1

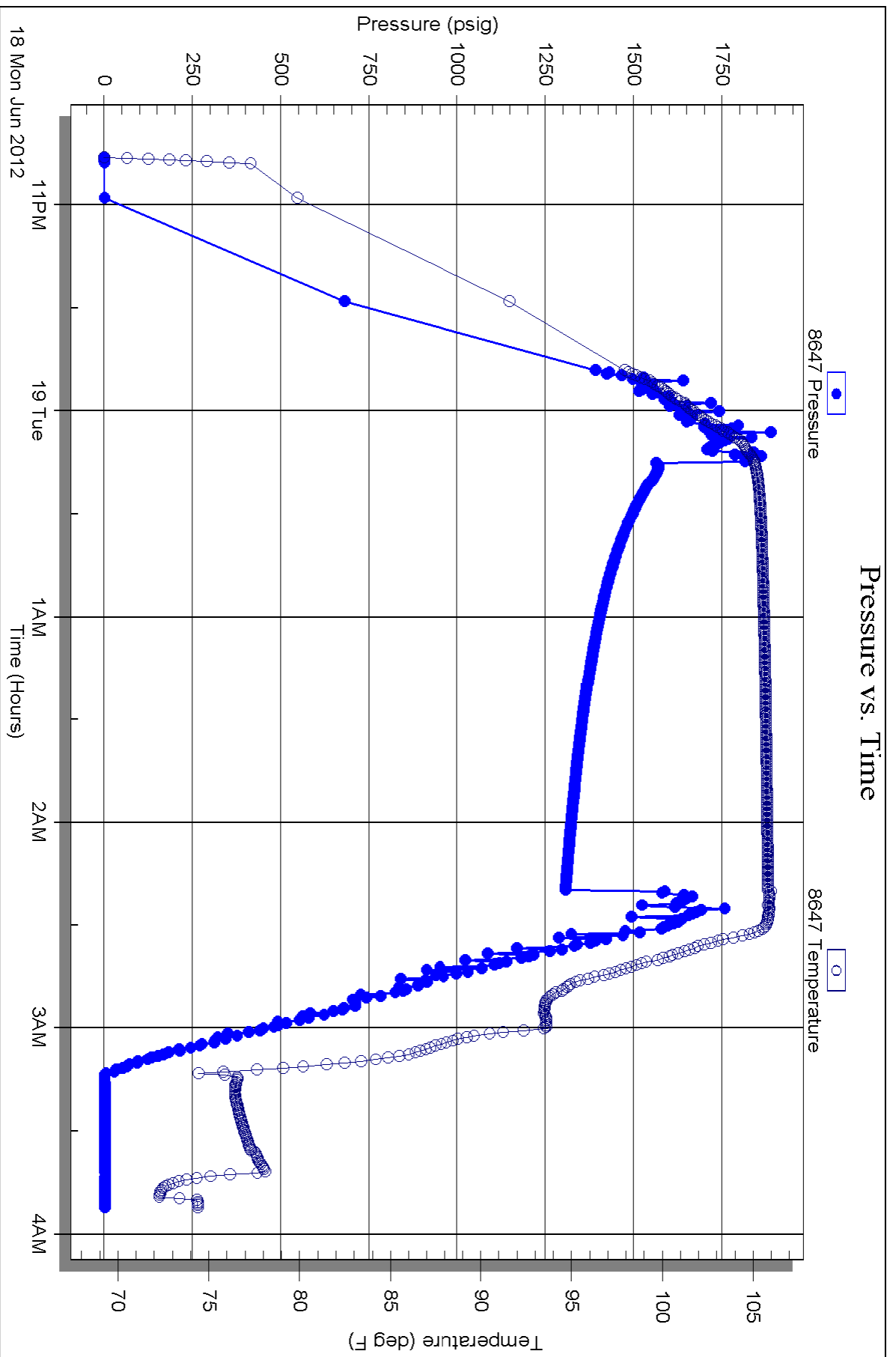


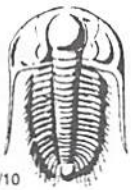
Serial #: 8647

Below (Strat) Prospect Oil & Gas Corp.

Bitter #1

DST Test Number: 1





TRILOBITE TESTING INC.

P.O. Box 1733 • Hays, Kansas 67601

Test Ticket

NO. 47879

Well Name & No. Bitter #1 Test No. 1 Date 6-18-12
 Company Prospect Oil & Gas Corp Elevation 1932 KB 1925 GL
 Address PO Box 837, Russell Ks. 67665-0837
 Co. Rep / Geo. Randy Kilian Rig Royal #2
 Location: Sec. 11 Twp. 16 S Rge. 14 W Co. Barton State Ks

Interval Tested 3371-3390 Zone Tested Arbuckle Cong.
 Anchor Length 19' Drill Pipe Run 3362 Mud Wt. 9.3
 Top Packer Depth 3371 Drill Collars Run 0 Vis 55
 Bottom Packer Depth 3390 Wt. Pipe Run 0 WL 6.8
 Total Depth 3430 Chlorides 1900 ppm System LCM 1

Blow Description IF: Blow died in 2 min.
ISF: NO Return
FF: NO Blow
FSL: NO Return

| Rec | Feet of | %gas | %oil | %water | %mud |
|----------|------------|------|------|--------|------|
| <u>1</u> | <u>Mud</u> | | | | |
| Rec | Feet of | %gas | %oil | %water | %mud |
| Rec | Feet of | %gas | %oil | %water | %mud |
| Rec | Feet of | %gas | %oil | %water | %mud |
| Rec | Feet of | %gas | %oil | %water | %mud |

Rec Total 1' BHT 104° Gravity _____ API RW _____ @ _____ °F Chlorides _____ ppm

(A) Initial Hydrostatic 1834 Test 1150 T-On Location 21:30
 (B) First Initial Flow 12 Jars _____ T-Started 22:46
 (C) First Final Flow 13 Safety Joint 75 T-Open 00:15
 (D) Initial Shut-In 305 Circ Sub _____ T-Pulled 02:20
 (E) Second Initial Flow 14 Hourly Standby _____ T-Out 03:53
 (F) Second Final Flow 15 Mileage 74ET 114.70 Comments _____
 (G) Final Shut-In 34 Sampler _____
 (H) Final Hydrostatic 1802 Straddle 600 Ruined Shale Packer _____
 Shale Packer _____ Ruined Packer _____
 Extra Packer _____ Extra Copies _____
 Extra Recorder _____ Sub Total 0
 Day Standby _____ Total 1939.70
 Accessibility _____ MP/DST Disc't _____
 Sub Total 1939.70

Approved By _____ Our Representative Randy Kilian

Trilobite Testing Inc. shall not be liable for damaged of any kind of the property or personnel of the one for whom a test is made, or for any loss suffered or sustained, directly or indirectly, through the use of its equipment, or its statements or opinion concerning the results of any test, tools lost or damaged in the hole shall be paid for at cost by the party for whom the test is made.