



**TRILOBITE
TESTING, INC.**

DRILL STEM TEST REPORT

Woolsey Operating Co
125 N Market Ste 1000
Wichita, KS 67202
ATTN: Bill Klaver

19-32S-12W Barber
Warren Fee 12
Job Ticket: 60481 **DST#: 2**
Test Start: 2014.07.14 @ 10:25:00

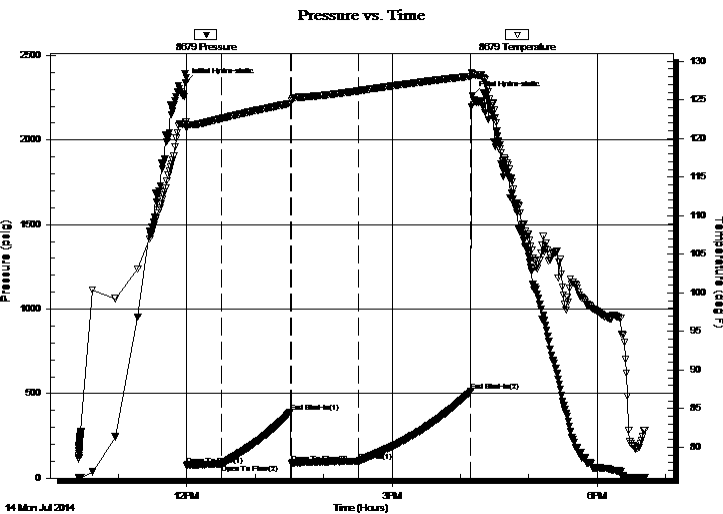
GENERAL INFORMATION:

Formation: **Viola**
Deviated: No Whipstock: ft (KB)
Time Tool Opened: 12:00:00
Time Test Ended: 18:42:00
Interval: **4630.00 ft (KB) To 4754.00 ft (KB) (TVD)**
Total Depth: 4754.00 ft (KB) (TVD)
Hole Diameter: 7.88 inches Hole Condition: Fair
Test Type: Conventional Bottom Hole (Reset)
Tester: Bob Hamel
Unit No: 67
Reference Elevations: 1658.00 ft (KB)
1646.00 ft (CF)
KB to GR/CF: 12.00 ft

Serial #: 8679

Press @ Run Depth: 100.27 psig @ ft (KB) Capacity: 8000.00 psig
Start Date: 2014.07.14 End Date: 2014.07.14 Last Calib.: 2014.07.14
Start Time: 10:25:01 End Time: 18:42:00 Time On Btm: 2014.07.14 @ 11:59:00
Time Off Btm: 2014.07.14 @ 16:10:30

TEST COMMENT: I.F. - 30 - 1/2" INT. BLOW BUILT TO (8" IN 30 MIN.)
I.S.I - 60 - NO B.B.
F.F. - 60 - 1/2" INT. BUILT TO (B.O.B IN 50 MIN.)
F.S.I. - 90 - NO B.B.



PRESSURE SUMMARY

Time (Min.)	Pressure (psig)	Temp (deg F)	Annotation
0	2341.08	122.09	Initial Hydro-static
1	76.78	121.43	Open To Flow (1)
32	83.55	122.59	Open To Flow (2)
92	390.50	124.55	End Shut-In(1)
93	88.10	124.86	Open To Flow (3)
152	100.27	126.17	Shut-In(1)
250	513.38	128.06	End Shut-In(2)
252	2264.44	128.33	Final Hydro-static

Recovery

Length (ft)	Description	Volume (bbl)
126.00	S,O,C,M 10%O 90%M	0.62
0.00	126' G.I.P.	0.00

* Recovery from multiple tests

Gas Rates

	Choke (inches)	Pressure (psig)	Gas Rate (Mcf/d)
First Gas Rate	0.13		



**TRILOBITE
TESTING, INC.**

DRILL STEM TEST REPORT

FLUID SUMMARY

Woolsey Operating Co

19-32S-12W Barber

125 N Market Ste 1000
Wichita, KS 67202

Warren Fee 12

Job Ticket: 60481

DST#: 2

ATTN: Bill Klaver

Test Start: 2014.07.14 @ 10:25:00

Mud and Cushion Information

Mud Type: Gel Chem

Cushion Type:

Oil API:

deg API

Mud Weight: 9.00 lb/gal

Cushion Length:

ft

Water Salinity:

ppm

Viscosity: 52.00 sec/qt

Cushion Volume:

bbbl

Water Loss: 9.59 in³

Gas Cushion Type:

Resistivity: 0.00 ohm.m

Gas Cushion Pressure:

psig

Salinity: 6000.00 ppm

Filter Cake: 0.02 inches

Recovery Information

Recovery Table

Length ft	Description	Volume bbl
126.00	S,O,C,M 10%O 90%M	0.620
0.00	126' G.I.P.	0.000

Total Length: 126.00 ft Total Volume: 0.620 bbl

Num Fluid Samples: 0

Num Gas Bombs: 0

Serial #:

Laboratory Name:

Laboratory Location:

Recovery Comments:

