



TEMPORARY ABANDONMENT WELL APPLICATION

OPERATOR: License# _____
 Name: _____
 Address 1: _____
 Address 2: _____
 City: _____ State: _____ Zip: _____ + _____
 Contact Person: _____
 Phone: (_____) _____
 Contact Person Email: _____
 Field Contact Person: _____
 Field Contact Person Phone: (_____) _____

API No. 15- _____
 Spot Description: _____
 _____ Sec. _____ Twp. _____ S. R. _____ E W
 _____ feet from N / S Line of Section
 _____ feet from E / W Line of Section
 GPS Location: Lat: _____, Long: _____
 County: _____ (e.g. xx.xxxxx) (e.g. -xxx.xxxxx)
 Lease Name: _____ Well #: _____
 Elevation: _____ GL KB
 Well Type: (check one) Oil Gas OG WSW Other: _____
 SWD Permit #: _____ ENHR Permit #: _____
 Gas Storage Permit #: _____
 Spud Date: _____ Date Shut-In: _____

	Conductor	Surface	Production	Intermediate	Liner	Tubing
Size						
Setting Depth						
Amount of Cement						
Top of Cement						
Bottom of Cement						

Casing Fluid Level: _____ How Determined? _____ Date: _____
 Casing Squeeze(s): _____ to _____ w / _____ sacks of cement, _____ to _____ w / _____ sacks of cement. Date: _____
 (top) (bottom) (top) (bottom)
 Do you have a valid Oil & Gas Lease? Yes No
 Depth and Type: Junk in Hole at _____ (depth) Tools in Hole at _____ (depth) Casing Leaks: Yes No Depth of casing leak(s): _____
 Type Completion: ALT. I ALT. II Depth of: DV Tool: _____ w / _____ sacks of cement Port Collar: _____ w / _____ sack of cement
 (depth) (depth)
 Packer Type: _____ Size: _____ Inch Set at: _____ Feet
 Total Depth: _____ Plug Back Depth: _____ Plug Back Method: _____

Geological Data:

Formation Name	Formation Top	Formation Base	Completion Information
1. _____	At: _____	to _____ Feet	Perforation Interval _____ to _____ Feet or Open Hole Interval _____ to _____ Feet
2. _____	At: _____	to _____ Feet	Perforation Interval _____ to _____ Feet or Open Hole Interval _____ to _____ Feet

Submitted Electronically

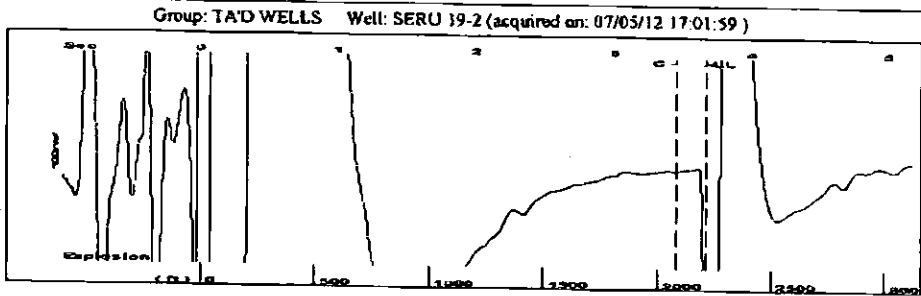
Do NOT Write in This Space - KCC USE ONLY

Date Tested: _____ Results: _____ Date Plugged: _____ Date Repaired: _____ Date Put Back in Service: _____

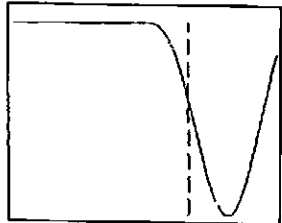
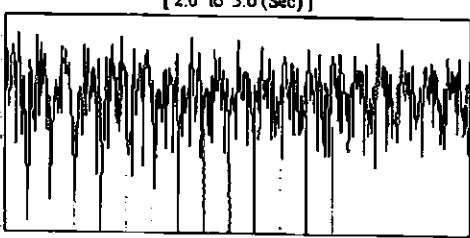
Review Completed by: _____ Comments: _____ TA Approved: Yes Denied

Mail to the Appropriate KCC Conservation Office:

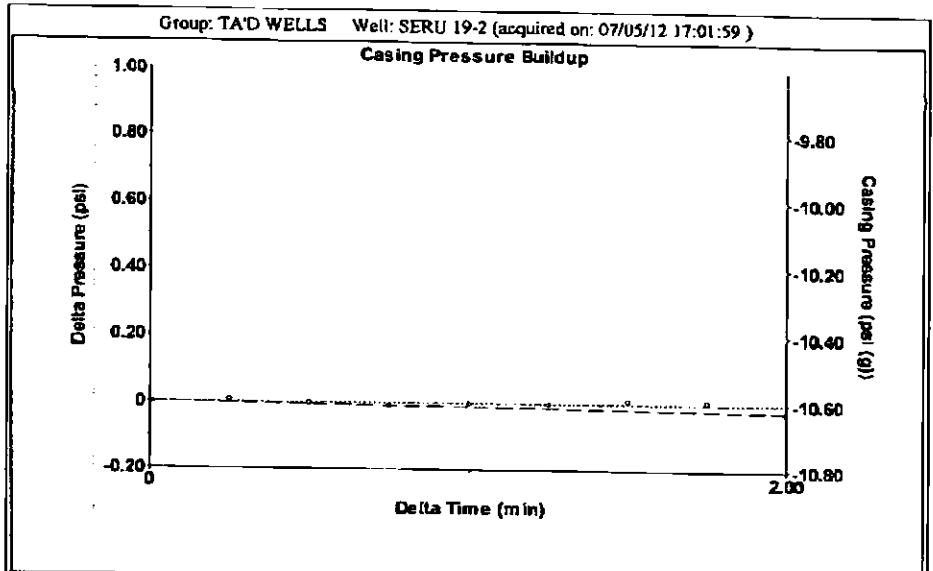
	KCC District Office #1 - 210 E. Frontview, Suite A, Dodge City, KS 67801	Phone 620.225.8888
	KCC District Office #2 - 3450 N. Rock Road, Building 600, Suite 601, Wichita, KS 67226	Phone 316.630.4000
	KCC District Office #3 - 1500 SW Seventh Steet, Chanute, KS 66720	Phone 620.432.2300
	KCC District Office #4 - 2301 E. 13th Street, Hays, KS 67601-2651	Phone 785.625.0550
	Underground Porosity Gas Storage (UPGS) 8200 E. 34th Street Circle N., Suite 1003, Wichita, KS 67226	Phone 316.734.4933



Filter Type High Pass Automatic Collar Count Yes Time 3.667 sec
 Manual Acoustic Vel 142.34 ft/s Manual JTS/sec 18.018 Joints 69.8149 Jts
 Depth 2213.13 ft



Analysis Method: Automatic



Change in Pressure -0.02 psi PT 9424
 Change in Time 2.00 min Range 0 - 7 psi

Group: TA'D WELLS Well: SERU 19-2 (acquired on: 07/05/12 17:01:59)

Production	Potential	Casing Pressure	Producing
Oil -*	-* BBL/D	-10.6 psi (g)	Amular
Water -*	-* BBL/D	Casing Pressure Buildup	Gas Flow
Gas -*	-* Mscf/D	-0.023 psi	0 Mscf/D
		2.00 min	% Liquid
		Gas/Liquid Interface Pressure	100 %
		-10.4 psi (g)	
		Liquid Level Depth	
		2213.13 ft	
		Pump Intake Depth	
		5211.00 ft	
		Formation Depth	
		5330.00 ft	
		Pump Intake	
		977.5 psi (g)	
		Producing BHP	
		1031.6 psi (g)	
		Static BHP	
		-* psi (g)	

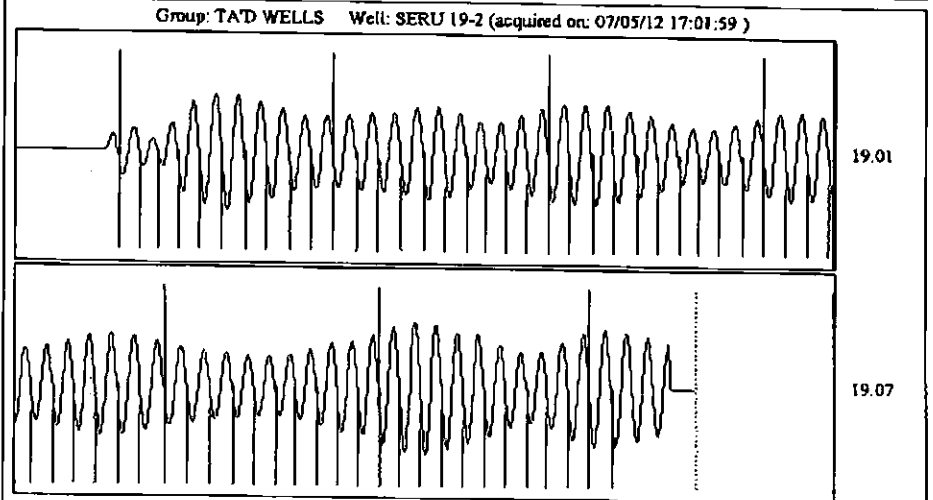
IPR Method Vogel
 PBHP/SBHP -*
 Production Efficiency 0.0

Oil 40 deg API
 Water 1.05 Sp.Gr.H2O
 Gas 0.78 Sp.Gr.AIR

Acoustic Velocity 1207.05 ft/s

Formation Submergence
 Total Gaseous Liquid Column HT (TVD) 2998 ft
 Equivalent Gas Free Liquid HT (TVD) 2998 ft

Acoustic Test



Acoustic Velocity 1207.05 ft/s Joints counted 61
 Joints Per Second 19.0387 jts/sec Joints to liquid level 69.8149
 Depth to liquid level 2213.13 ft Filter Width 16.018 20.018
 Automatic Collar Count Yes Time to 1st Collar 0.252 3.456