



TEMPORARY ABANDONMENT WELL APPLICATION

OPERATOR: License# _____
 Name: _____
 Address 1: _____
 Address 2: _____
 City: _____ State: _____ Zip: _____ + _____
 Contact Person: _____
 Phone: (_____) _____
 Contact Person Email: _____
 Field Contact Person: _____
 Field Contact Person Phone: (_____) _____

API No. 15- _____
 Spot Description: _____
 _____ Sec. _____ Twp. _____ S. R. _____ E W
 _____ feet from N / S Line of Section
 _____ feet from E / W Line of Section
 GPS Location: Lat: _____, Long: _____
 County: _____ (e.g. xx.xxxxx) (e.g. -xxx.xxxxx)
 Lease Name: _____ Well #: _____
 Elevation: _____ GL KB
 Well Type: (check one) Oil Gas OG WSW Other: _____
 SWD Permit #: _____ ENHR Permit #: _____
 Gas Storage Permit #: _____
 Spud Date: _____ Date Shut-In: _____

	Conductor	Surface	Production	Intermediate	Liner	Tubing
Size						
Setting Depth						
Amount of Cement						
Top of Cement						
Bottom of Cement						

Casing Fluid Level: _____ How Determined? _____ Date: _____
 Casing Squeeze(s): _____ to _____ w / _____ sacks of cement, _____ to _____ w / _____ sacks of cement. Date: _____
 (top) (bottom) (top) (bottom)
 Do you have a valid Oil & Gas Lease? Yes No
 Depth and Type: Junk in Hole at _____ (depth) Tools in Hole at _____ (depth) Casing Leaks: Yes No Depth of casing leak(s): _____
 Type Completion: ALT. I ALT. II Depth of: DV Tool: _____ w / _____ sacks of cement Port Collar: _____ w / _____ sack of cement
 (depth) (depth)
 Packer Type: _____ Size: _____ Inch Set at: _____ Feet
 Total Depth: _____ Plug Back Depth: _____ Plug Back Method: _____

Geological Data:

Formation Name	Formation Top	Formation Base	Completion Information
1. _____	At: _____	to _____ Feet	Perforation Interval _____ to _____ Feet or Open Hole Interval _____ to _____ Feet
2. _____	At: _____	to _____ Feet	Perforation Interval _____ to _____ Feet or Open Hole Interval _____ to _____ Feet

Submitted Electronically

Do NOT Write in This Space - KCC USE ONLY

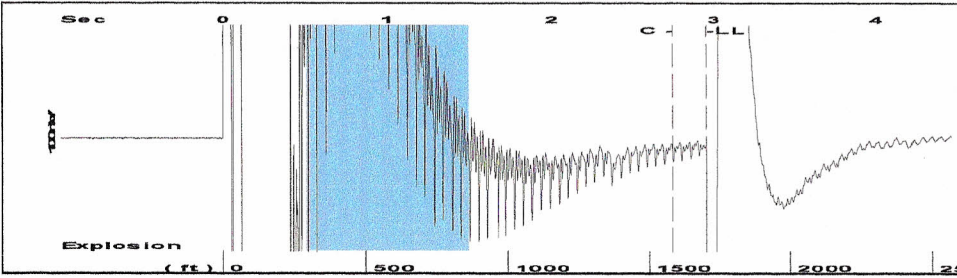
Date Tested: _____ Results: _____ Date Plugged: _____ Date Repaired: _____ Date Put Back in Service: _____

Review Completed by: _____ Comments: _____ TA Approved: Yes Denied

Mail to the Appropriate KCC Conservation Office:

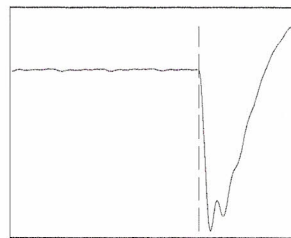
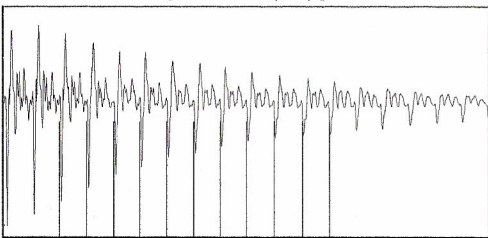
	KCC District Office #1 - 210 E. Frontview, Suite A, Dodge City, KS 67801	Phone 620.225.8888
	KCC District Office #2 - 3450 N. Rock Road, Building 600, Suite 601, Wichita, KS 67226	Phone 316.630.4000
	KCC District Office #3 - 1500 SW Seventh Steet, Chanute, KS 66720	Phone 620.432.2300
	KCC District Office #4 - 2301 E. 13th Street, Hays, KS 67601-2651	Phone 785.625.0550
	Underground Porosity Gas Storage (UPGS) 8200 E. 34th Street Circle N., Suite 1003, Wichita, KS 67226	Phone 316.734.4933

Group: Garden City Rt 5 Well: Koenig A#4 (acquired on: 07/10/12 11:36:16)



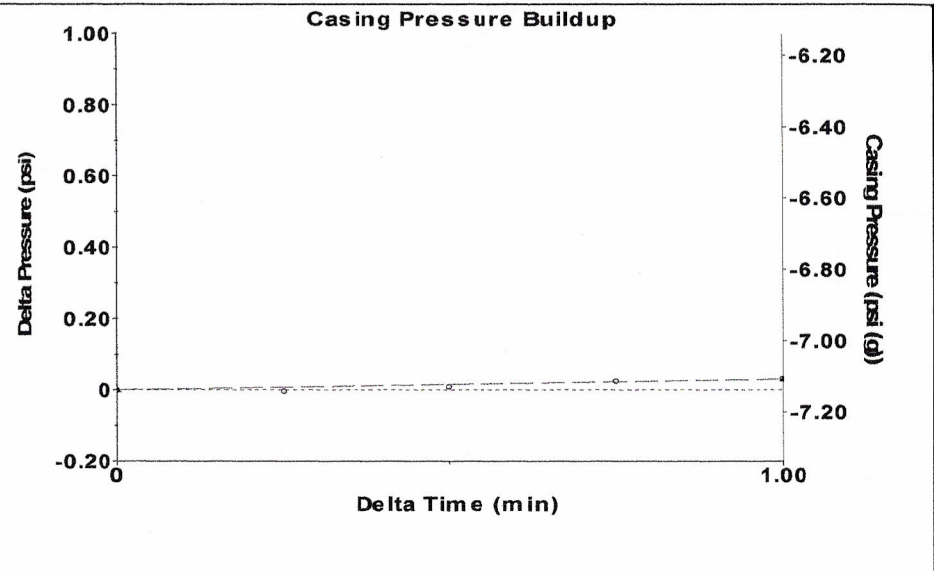
Filter Type High Pass Automatic Collar Count Yes Time 2.951 sec
 Manual Acoustic Velo 1140.29 ft/s Manual JTS/sec 17.9856 Joints 53.6081 Jts
 Depth 1699.38 ft

[0.5 to 1.5 (Sec)]



Analysis Method: Automatic

Group: Garden City Rt 5 Well: Koenig A#4 (acquired on: 07/10/12 11:36:16)



Change in Pressure 0.03 psi PT8746
 Change in Time 1.00 min Range 0 - ? psi

Group: Garden City Rt 5 Well: Koenig A#4 (acquired on: 07/10/12 11:36:16)

Production Current Potential
 Oil 0 - * - BBL/D
 Water 0 - * - BBL/D
 Gas 0.0 - * - Mscf/D

IPR Method Vogel
 PBHP/SBHP - * -
 Production Efficiency 0.0

Oil 40 deg.API
 Water 1.05 Sp.Gr.H2O
 Gas 0.81 Sp.Gr.AIR

Acoustic Velocity 1151.73 ft/s

Casing Pressure -7.1 psi (g)
 Casing Pressure Buildup 0.030 psi
 1.00 min
 Gas/Liquid Interface Pressure -6.8 psi (g)

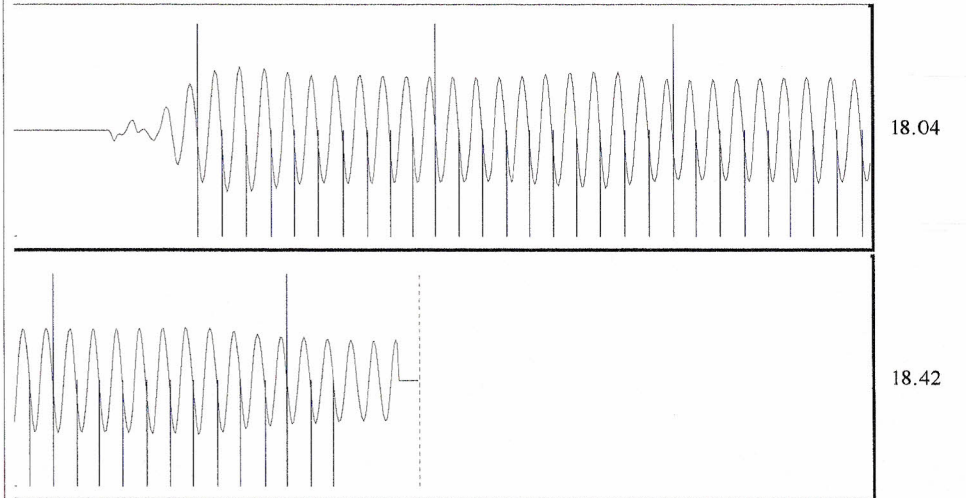
Liquid Level Depth 1699.38 ft
 Pump Intake Depth 5424.00 ft
 Formation Depth 5400.00 ft



Static
 Oil Column Height MD 0 ft
 Water Column Height MD 3701 ft
 Static BHP 1675.7 psi (g)

Acoustic Test

Group: Garden City Rt 5 Well: Koenig A#4 (acquired on: 07/10/12 11:36:16)



Acoustic Velocity 1151.73 ft/s Joints counted 42
 Joints Per Second 18.1661 jts/sec Joints to liquid level 53.6081
 Depth to liquid level 1699.38 ft Filter Width 15.9856 19.9856
 Automatic Collar Count Yes Time to 1st Collar 0.432 2.744