



TEMPORARY ABANDONMENT WELL APPLICATION

OPERATOR: License# _____
 Name: _____
 Address 1: _____
 Address 2: _____
 City: _____ State: _____ Zip: _____ + _____
 Contact Person: _____
 Phone: (_____) _____
 Contact Person Email: _____
 Field Contact Person: _____
 Field Contact Person Phone: (_____) _____

API No. 15- _____
 Spot Description: _____
 _____ Sec. _____ Twp. _____ S. R. _____ E W
 _____ feet from N / S Line of Section
 _____ feet from E / W Line of Section
 GPS Location: Lat: _____, Long: _____
 County: _____ (e.g. xx.xxxxx) (e.g. -xxx.xxxxx)
 Lease Name: _____ Well #: _____
 Elevation: _____ GL KB
 Well Type: (check one) Oil Gas OG WSW Other: _____
 SWD Permit #: _____ ENHR Permit #: _____
 Gas Storage Permit #: _____
 Spud Date: _____ Date Shut-In: _____

	Conductor	Surface	Production	Intermediate	Liner	Tubing
Size						
Setting Depth						
Amount of Cement						
Top of Cement						
Bottom of Cement						

Casing Fluid Level: _____ How Determined? _____ Date: _____
 Casing Squeeze(s): _____ to _____ w / _____ sacks of cement, _____ to _____ w / _____ sacks of cement. Date: _____
 (top) (bottom) (top) (bottom)
 Do you have a valid Oil & Gas Lease? Yes No
 Depth and Type: Junk in Hole at _____ (depth) Tools in Hole at _____ (depth) Casing Leaks: Yes No Depth of casing leak(s): _____
 Type Completion: ALT. I ALT. II Depth of: DV Tool: _____ w / _____ sacks of cement Port Collar: _____ w / _____ sack of cement
 (depth) (depth)
 Packer Type: _____ Size: _____ Inch Set at: _____ Feet
 Total Depth: _____ Plug Back Depth: _____ Plug Back Method: _____

Geological Data:

Formation Name	Formation Top	Formation Base	Completion Information
1. _____	At: _____	to _____ Feet	Perforation Interval _____ to _____ Feet or Open Hole Interval _____ to _____ Feet
2. _____	At: _____	to _____ Feet	Perforation Interval _____ to _____ Feet or Open Hole Interval _____ to _____ Feet

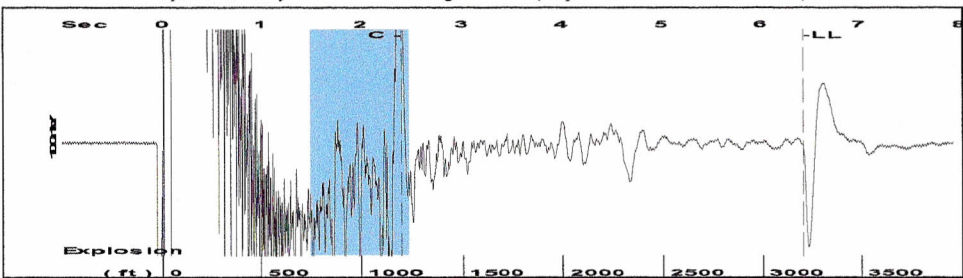
Submitted Electronically

Do NOT Write in This Space - KCC USE ONLY	Date Tested: _____	Results: _____	Date Plugged: _____	Date Repaired: _____	Date Put Back in Service: _____
	Review Completed by: _____	Comments: _____	TA Approved: Yes <input type="checkbox"/> Denied <input type="checkbox"/>		

Mail to the Appropriate KCC Conservation Office:

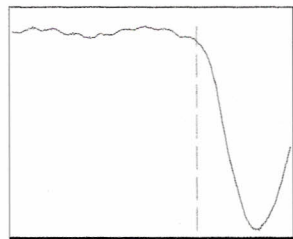
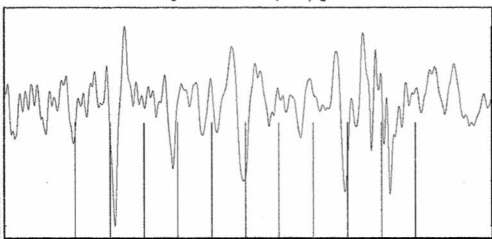
	KCC District Office #1 - 210 E. Frontview, Suite A, Dodge City, KS 67801	Phone 620.225.8888
	KCC District Office #2 - 3450 N. Rock Road, Building 600, Suite 601, Wichita, KS 67226	Phone 316.630.4000
	KCC District Office #3 - 1500 SW Seventh Steet, Chanute, KS 66720	Phone 620.432.2300
	KCC District Office #4 - 2301 E. 13th Street, Hays, KS 67601-2651	Phone 785.625.0550
	Underground Porosity Gas Storage (UPGS) 8200 E. 34th Street Circle N., Suite 1003, Wichita, KS 67226	Phone 316.734.4933

Group: Garden City TA'd Well: Hungate #3-13 (acquired on: 07/10/12 12:39:15)



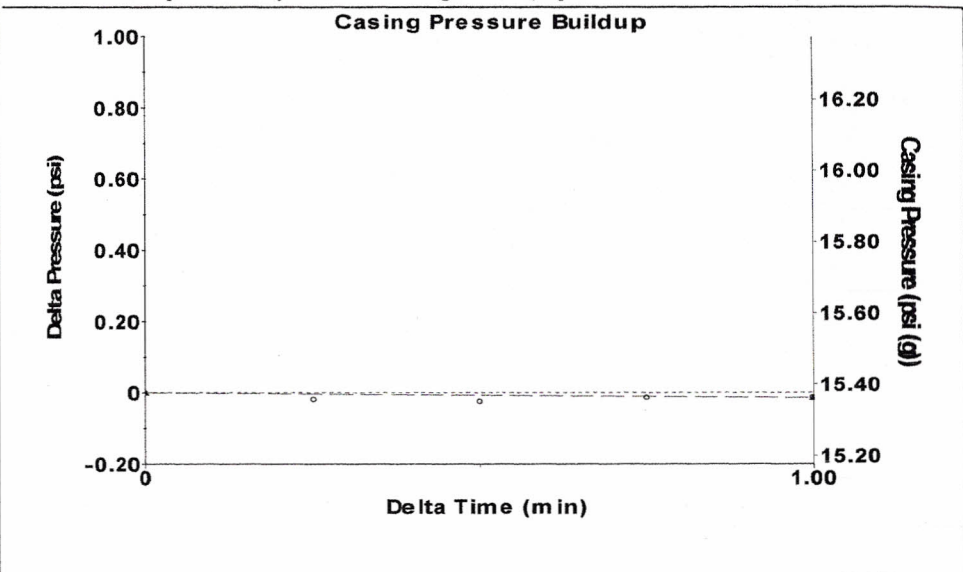
Filter Type High Pass Automatic Collar Count Yes Time 6.431 sec
 Manual Acoustic Velo 901.849 ft/s Manual JTS/sec 14.2248 Joints 101.059 Jts
 Depth 3203.56 ft

[1.5 to 2.5 (Sec)]



Analysis Method: Automatic

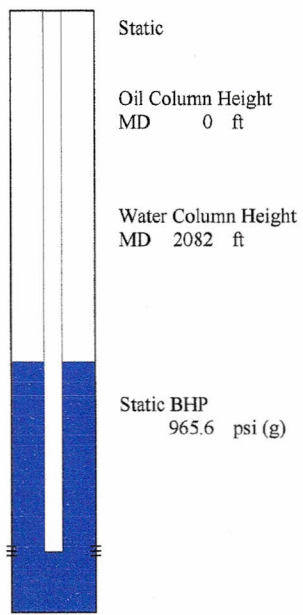
Group: Garden City TA'd Well: Hungate #3-13 (acquired on: 07/10/12 12:39:15)



Change in Pressure -0.01 psi PT8746
 Range 0 - ? psi
 Change in Time 1.00 min

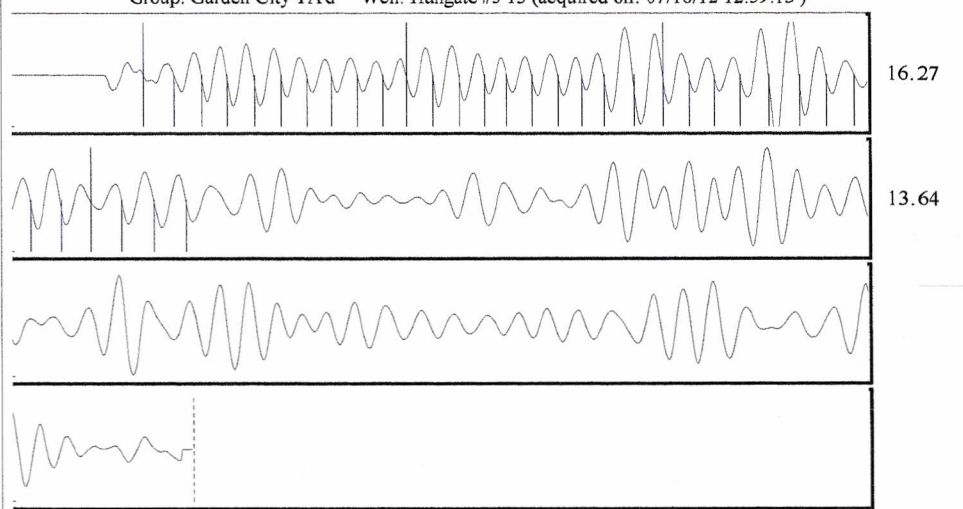
Group: Garden City TA'd Well: Hungate #3-13 (acquired on: 07/10/12 12:39:15)

Production		Potential	Casing Pressure
Oil	0	- * - BBL/D	15.4 psi (g)
Water	0	- * - BBL/D	Casing Pressure Buildup
Gas	0.0	- * - Mscf/D	-0.014 psi
IPR Method		Vogel	1.00 min
PBHP/SBHP		- * -	Gas/Liquid Interface Pressure
Production Efficiency		0.0	18.8 psi (g)
Oil	40 deg.API	Liquid Level Depth	3203.56 ft
Water	1.05 Sp.Gr.H2O	Pump Intake Depth	5300.00 ft
Gas	0.97 Sp.Gr.AIR	Formation Depth	5286.00 ft
Acoustic Velocity	996.286 ft/s		



Acoustic Test

Group: Garden City TA'd Well: Hungate #3-13 (acquired on: 07/10/12 12:39:15)



Acoustic Velocity	996.286 ft/s	Joints counted	33
Joints Per Second	15.7143 jts/sec	Joints to liquid level	101.059
Depth to liquid level	3203.56 ft	Filter Width	12.2248 16.2248
Automatic Collar Count	Yes	Time to 1st Collar	0.312 2.412