



TEMPORARY ABANDONMENT WELL APPLICATION

OPERATOR: License# _____
 Name: _____
 Address 1: _____
 Address 2: _____
 City: _____ State: _____ Zip: _____ + _____
 Contact Person: _____
 Phone: (_____) _____
 Contact Person Email: _____
 Field Contact Person: _____
 Field Contact Person Phone: (_____) _____

API No. 15- _____
 Spot Description: _____
 _____ Sec. _____ Twp. _____ S. R. _____ E W
 _____ feet from N / S Line of Section
 _____ feet from E / W Line of Section
 GPS Location: Lat: _____, Long: _____
 County: _____ (e.g. xx.xxxxx) (e.g. -xxx.xxxxx)
 Lease Name: _____ Well #: _____
 Elevation: _____ GL KB
 Well Type: (check one) Oil Gas OG WSW Other: _____
 SWD Permit #: _____ ENHR Permit #: _____
 Gas Storage Permit #: _____
 Spud Date: _____ Date Shut-In: _____

	Conductor	Surface	Production	Intermediate	Liner	Tubing
Size						
Setting Depth						
Amount of Cement						
Top of Cement						
Bottom of Cement						

Casing Fluid Level: _____ How Determined? _____ Date: _____
 Casing Squeeze(s): _____ to _____ w / _____ sacks of cement, _____ to _____ w / _____ sacks of cement. Date: _____
 (top) (bottom) (top) (bottom)
 Do you have a valid Oil & Gas Lease? Yes No
 Depth and Type: Junk in Hole at _____ (depth) Tools in Hole at _____ (depth) Casing Leaks: Yes No Depth of casing leak(s): _____
 Type Completion: ALT. I ALT. II Depth of: DV Tool: _____ w / _____ sacks of cement Port Collar: _____ w / _____ sack of cement
 (depth) (depth)
 Packer Type: _____ Size: _____ Inch Set at: _____ Feet
 Total Depth: _____ Plug Back Depth: _____ Plug Back Method: _____

Geological Data:

Formation Name	Formation Top	Formation Base	Completion Information
1. _____	At: _____	to _____ Feet	Perforation Interval _____ to _____ Feet or Open Hole Interval _____ to _____ Feet
2. _____	At: _____	to _____ Feet	Perforation Interval _____ to _____ Feet or Open Hole Interval _____ to _____ Feet

Submitted Electronically

Do NOT Write in This Space - KCC USE ONLY

Date Tested: _____ Results: _____ Date Plugged: _____ Date Repaired: _____ Date Put Back in Service: _____

Review Completed by: _____ Comments: _____ TA Approved: Yes Denied

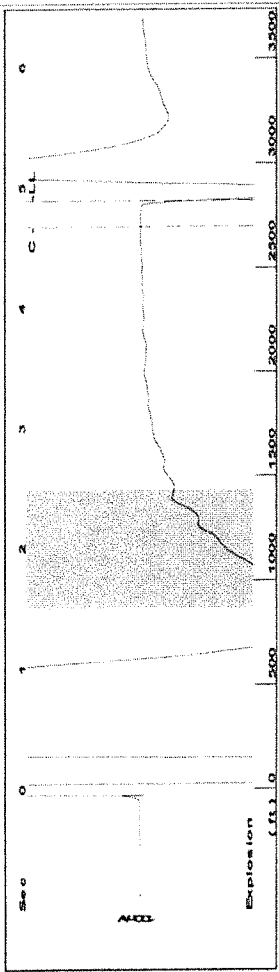
Mail to the Appropriate KCC Conservation Office:

	KCC District Office #1 - 210 E. Frontview, Suite A, Dodge City, KS 67801	Phone 620.225.8888
	KCC District Office #2 - 3450 N. Rock Road, Building 600, Suite 601, Wichita, KS 67226	Phone 316.630.4000
	KCC District Office #3 - 1500 SW Seventh Steet, Chanute, KS 66720	Phone 620.432.2300
	KCC District Office #4 - 2301 E. 13th Street, Hays, KS 67601-2651	Phone 785.625.0550
	Underground Porosity Gas Storage (UPGS) 8200 E. 34th Street Circle N., Suite 1003, Wichita, KS 67226	Phone 316.734.4933

15-067-21471-00-00

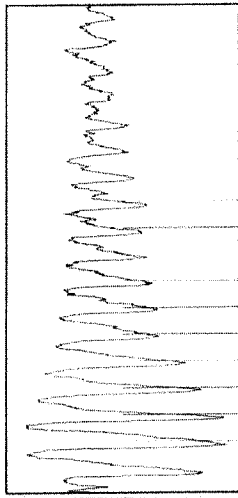
Reed B#1

Group: TAD WELLS Well: REED B-1 (acquired on: 07/16/12 13:14:51)



Filter Type High Pass Automatic Collar Count Yes
Manual Acoustic Velo 1156.93 ft/s Manual JTS/sec 18.2482

[1.5 to 2.5 (Sec)]

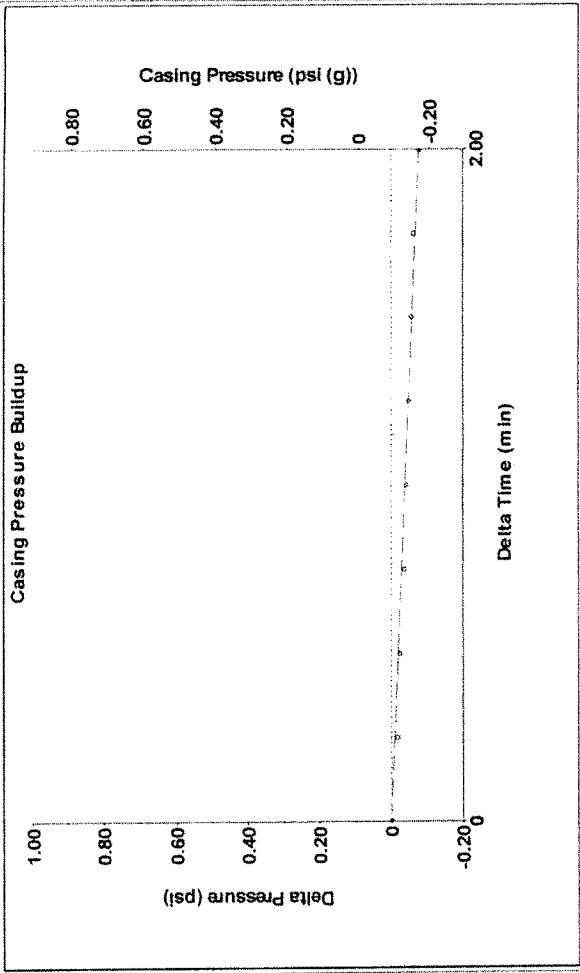


Analysis Method: Automatic

Group: TAD WELLS Well: REED B-1 (acquired on: 07/16/12 13:14:51)

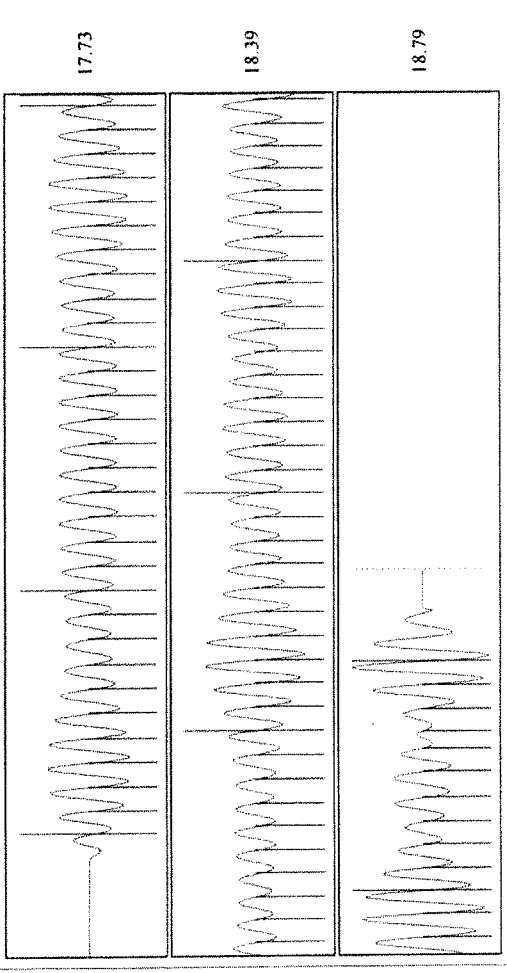
Production	Potential	Casing Pressure	Producing
Oil - * -	- * - BBL/D	-0.1 psi (g)	Annular
Water - * -	- * - BBL/D	-0.078 psi	Gas Flow 0 Mscf/D
Gas - * -	- * - Mscf/D	2.00 min	% Liquid 100 %
IPR Method	Vogel	Gas/Liquid Interface Pressure	Pump Intake
PBHP/SBHP	- * -	1.1 psi (g)	893.3 psi (g)
Production Efficiency	0.0	Liquid Level Depth	Producing BHP
Oil 40 deg API		2823.29 ft	577.6 psi (g)
Water 1.05 Sp.Gr.H2O		Pump Intake Depth	Static BHP
Gas 0.83 Sp.Gr.AIR		5541.00 ft	- * - psi (g)
Acoustic Velocity	1153.78 ft/s	Formation Depth	
		4544.00 ft	
Formation Submergence			
Total Gaseous Liquid Column HT (TVD)	2718 ft		
Equivalent Gas Free Liquid HT (TVD)	2718 ft		
Acoustic Test			

Group: TAD WELLS Well: REED B-1 (acquired on: 07/16/12 13:14:51)



Change in Pressure -0.08 psi
Change in Time 2.00 min
PT 9424 Range

Group: TAD WELLS Well: REED B-1 (acquired on: 07/16/12 13:14:51)



Acoustic Velocity	1153.78 ft/s	Joints counted	80
Joints Per Second	18.1984 jts/sec	Joints to liquid level	89.0628
Depth to liquid level	2823.29 ft	Filter Width	16.2482
Automatic Collar Count	Yes	Time to 1st Collar	0.284
			4.68