



TEMPORARY ABANDONMENT WELL APPLICATION

All blanks must be complete

OPERATOR: License# _____
 Name: _____
 Address 1: _____
 Address 2: _____
 City: _____ State: _____ Zip: _____ + _____
 Contact Person: _____
 Phone: (_____) _____
 Contact Person Email: _____
 Field Contact Person: _____
 Field Contact Person Phone: (_____) _____

API No. 15- _____
 Spot Description: _____
 _____ Sec. _____ Twp. _____ S. R. _____ E W
 _____ feet from N / S Line of Section
 _____ feet from E / W Line of Section
 GPS Location: Lat: _____, Long: _____
 County: _____ (e.g. xx.xxxxx) (e.g. -xxx.xxxxx)
 Lease Name: _____ Well #: _____
 Elevation: _____ GL KB
 Well Type: (check one) Oil Gas OG WSW Other: _____
 SWD Permit #: _____ ENHR Permit #: _____
 Gas Storage Permit #: _____
 Spud Date: _____ Date Shut-In: _____

	Conductor	Surface	Production	Intermediate	Liner	Tubing
Size						
Setting Depth						
Amount of Cement						
Top of Cement						
Bottom of Cement						

Casing Fluid Level: _____ How Determined? _____ Date: _____
 Casing Squeeze(s): _____ to _____ w / _____ sacks of cement, _____ to _____ w / _____ sacks of cement. Date: _____
 (top) (bottom) (top) (bottom)
 Do you have a valid Oil & Gas Lease? Yes No
 Depth and Type: Junk in Hole at _____ (depth) Tools in Hole at _____ (depth) Casing Leaks: Yes No Depth of casing leak(s): _____
 Type Completion: ALT. I ALT. II Depth of: DV Tool: _____ w / _____ sacks of cement Port Collar: _____ w / _____ sack of cement
 (depth) (depth)
 Packer Type: _____ Size: _____ Inch Set at: _____ Feet
 Total Depth: _____ Plug Back Depth: _____ Plug Back Method: _____

Geological Data:

Formation Name	Formation Top	Formation Base	Completion Information
1. _____	At: _____	to _____ Feet	Perforation Interval _____ to _____ Feet or Open Hole Interval _____ to _____ Feet
2. _____	At: _____	to _____ Feet	Perforation Interval _____ to _____ Feet or Open Hole Interval _____ to _____ Feet

Submitted Electronically

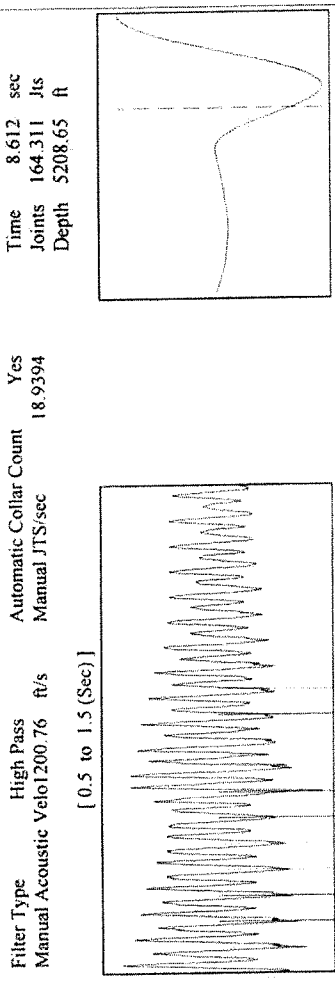
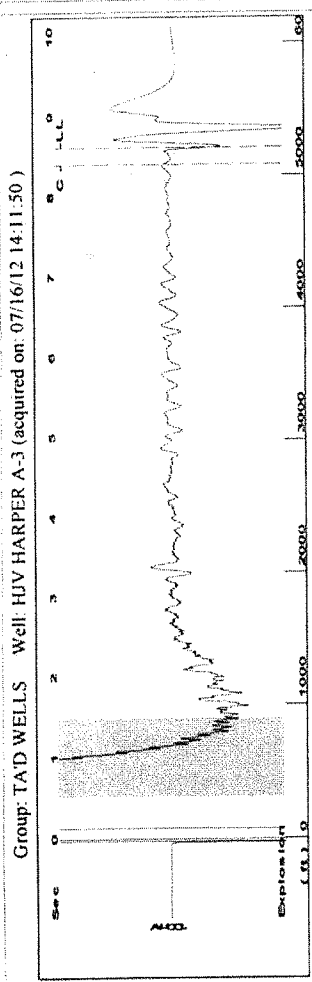
Do NOT Write in This Space - KCC USE ONLY	Date Tested: _____	Results: _____	Date Plugged: _____	Date Repaired: _____	Date Put Back in Service: _____
	Review Completed by: _____	Comments: _____	TA Approved: Yes <input type="checkbox"/> Denied <input type="checkbox"/>		

Mail to the Appropriate KCC Conservation Office:

	KCC District Office #1 - 210 E. Frontview, Suite A, Dodge City, KS 67801	Phone 620.225.8888
	KCC District Office #2 - 3450 N. Rock Road, Building 600, Suite 601, Wichita, KS 67226	Phone 316.630.4000
	KCC District Office #3 - 1500 SW Seventh Steet, Chanute, KS 66720	Phone 620.432.2300
	KCC District Office #4 - 2301 E. 13th Street, Hays, KS 67601-2651	Phone 785.625.0550
	Underground Porosity Gas Storage (UPGS) 8200 E. 34th Street Circle N., Suite 1003, Wichita, KS 67226	Phone 316.734.4933

HJV Harper A #3

15-067-21515-00-00

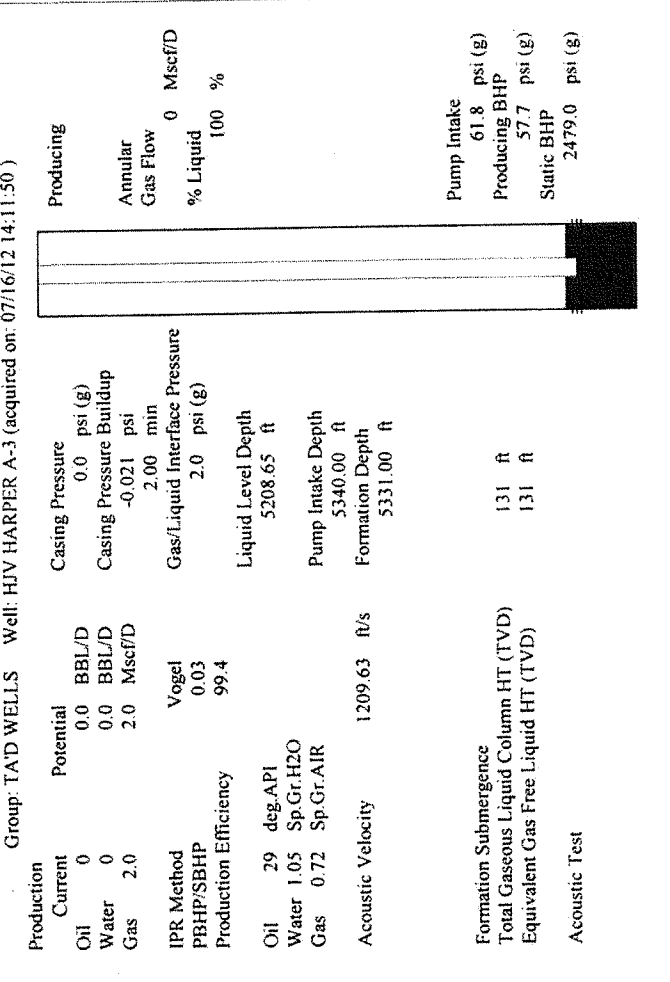
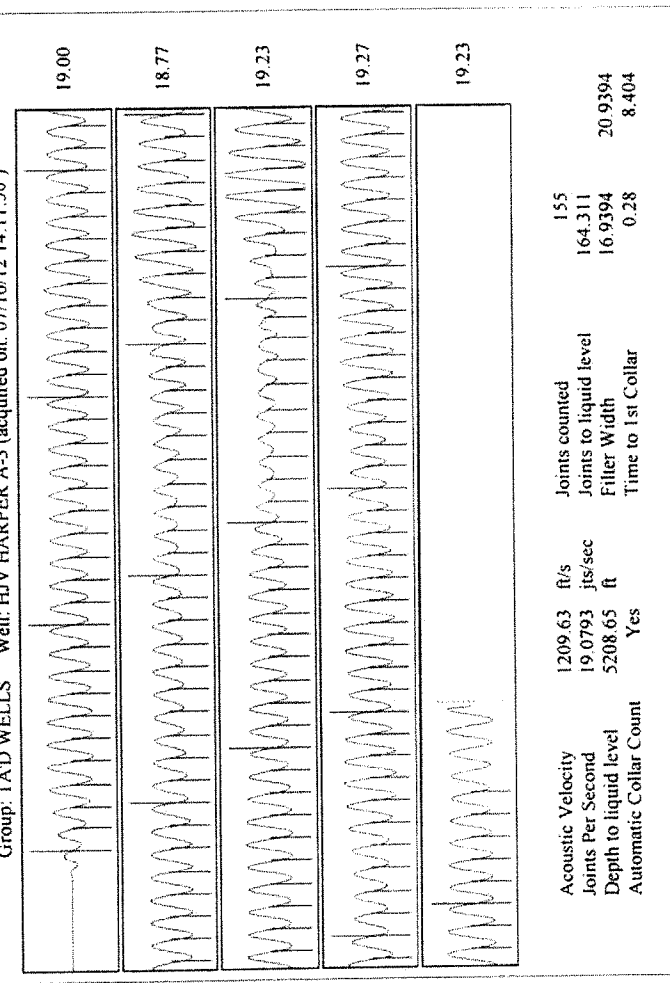


Filter Type High Pass Automatic Collar Count Yes
Manual Acoustic Velo 1200.76 ft/s Manual JTS/sec 18.9394

Analysis Method: Automatic

Group: TAD WELLS Well: HJV HARPER A-3 (acquired on: 07/16/12 14:11:50)

Production Current	Oil 0	Potential	0.0 BBL/D	Casing Pressure	0.0 psi (g)
Water 0	0.0 BBL/D	Casing Pressure Buildup	-0.021 psi	Change in Pressure	-0.02 psi
Gas 2.0	2.0 Mscf/D	Gas/Liquid Interface Pressure	2.00 min	Change in Time	2.00 min
IPR Method	Vogel	Liquid Level Depth	5208.65 ft		
PBHP/SBHP	0.03	Pump Intake Depth	5340.00 ft		
Production Efficiency	99.4	Formation Depth	5331.00 ft		
Oil 29 deg API		Acoustic Velocity	1209.63 ft/s		
Water 1.05 Sp.Gr.H2O		Formation Submergence			
Gas 0.72 Sp.Gr.AIR		Total Gaseous Liquid Column HT (TVD)	131 ft		
		Equivalent Gas Free Liquid HT (TVD)	131 ft		
		Acoustic Test			



Acoustic Velocity 1209.63 ft/s
Joints Per Second 19.0793 jts/sec
Depth to liquid level 5208.65 ft
Automatic Collar Count Yes

Joints counted 155
Joints to liquid level 164.311
Filter Width 20.9394
Time to 1st Collar 8.404