



KANSAS CORPORATION COMMISSION 1088670
OIL & GAS CONSERVATION DIVISION

Form ACO-1

June 2009

Form Must Be Typed

Form must be Signed

All blanks must be Filled

WELL COMPLETION FORM
WELL HISTORY - DESCRIPTION OF WELL & LEASE

OPERATOR: License # _____

Name: _____

Address 1: _____

Address 2: _____

City: _____ State: _____ Zip: _____ + _____

Contact Person: _____

Phone: (_____) _____

CONTRACTOR: License # _____

Name: _____

Wellsite Geologist: _____

Purchaser: _____

Designate Type of Completion:

- New Well Re-Entry Workover
- Oil WSW SWD SIOW
- Gas D&A ENHR SIGW
- OG GSW Temp. Abd.
- CM (Coal Bed Methane)
- Cathodic Other (Core, Expl., etc.): _____

If Workover/Re-entry: Old Well Info as follows:

Operator: _____

Well Name: _____

Original Comp. Date: _____ Original Total Depth: _____

- Deepening Re-perf. Conv. to ENHR Conv. to SWD
- Conv. to GSW
- Plug Back: _____ Plug Back Total Depth _____
- Commingled Permit #: _____
- Dual Completion Permit #: _____
- SWD Permit #: _____
- ENHR Permit #: _____
- GSW Permit #: _____

Spud Date or Recompletion Date Date Reached TD Completion Date or Recompletion Date

API No. 15 - _____

Spot Description: _____

_____ - _____ - _____ Sec. _____ Twp. _____ S. R. _____ East West

_____ Feet from North / South Line of Section

_____ Feet from East / West Line of Section

Footages Calculated from Nearest Outside Section Corner:

- NE NW SE SW

County: _____

Lease Name: _____ Well #: _____

Field Name: _____

Producing Formation: _____

Elevation: Ground: _____ Kelly Bushing: _____

Total Depth: _____ Plug Back Total Depth: _____

Amount of Surface Pipe Set and Cemented at: _____ Feet

Multiple Stage Cementing Collar Used? Yes No

If yes, show depth set: _____ Feet

If Alternate II completion, cement circulated from: _____

feet depth to: _____ w/ _____ sx cmt.

Drilling Fluid Management Plan

(Data must be collected from the Reserve Pit)

Chloride content: _____ ppm Fluid volume: _____ bbls

Dewatering method used: _____

Location of fluid disposal if hauled offsite: _____

Operator Name: _____

Lease Name: _____ License #: _____

Quarter _____ Sec. _____ Twp. _____ S. R. _____ East West

County: _____ Permit #: _____

AFFIDAVIT

I am the affiant and I hereby certify that all requirements of the statutes, rules and regulations promulgated to regulate the oil and gas industry have been fully complied with and the statements herein are complete and correct to the best of my knowledge.

Submitted Electronically

KCC Office Use ONLY

- Letter of Confidentiality Received
Date: _____
- Confidential Release Date: _____
- Wireline Log Received
- Geologist Report Received
- UIC Distribution
- ALT I II III Approved by: _____ Date: _____



1088670

Operator Name: _____ Lease Name: _____ Well #: _____

Sec. _____ Twp. _____ S. R. _____ East West County: _____

INSTRUCTIONS: Show important tops and base of formations penetrated. Detail all cores. Report all final copies of drill stems tests giving interval tested, time tool open and closed, flowing and shut-in pressures, whether shut-in pressure reached static level, hydrostatic pressures, bottom hole temperature, fluid recovery, and flow rates if gas to surface test, along with final chart(s). Attach extra sheet if more space is needed. Attach complete copy of all Electric Wire-line Logs surveyed. Attach final geological well site report.

| | |
|-----------------------------------------------------------------------------------------------------------------------------------------------------------------------------------------------------------------------------------------------------------------------------------------------------------------------------------------------------------------------------------------------------------------------------------------------------------------------------------------------------------------------------------------------|---------------------------------------------------------------------------------------------------------------------|
| Drill Stem Tests Taken <input type="checkbox"/> Yes <input type="checkbox"/> No <i>(Attach Additional Sheets)</i> Samples Sent to Geological Survey <input type="checkbox"/> Yes <input type="checkbox"/> No Cores Taken <input type="checkbox"/> Yes <input type="checkbox"/> No Electric Log Run <input type="checkbox"/> Yes <input type="checkbox"/> No Electric Log Submitted Electronically <input type="checkbox"/> Yes <input type="checkbox"/> No <i>(If no, Submit Copy)</i> List All E. Logs Run: | <input type="checkbox"/> Log Formation (Top), Depth and Datum <input type="checkbox"/> Sample Name Top Datum |
|-----------------------------------------------------------------------------------------------------------------------------------------------------------------------------------------------------------------------------------------------------------------------------------------------------------------------------------------------------------------------------------------------------------------------------------------------------------------------------------------------------------------------------------------------|---------------------------------------------------------------------------------------------------------------------|

| CASING RECORD <input type="checkbox"/> New <input type="checkbox"/> Used | | | | | | | |
|---------------------------------------------------------------------------|-------------------|---------------------------|-------------------|---------------|----------------|--------------|----------------------------|
| Report all strings set-conductor, surface, intermediate, production, etc. | | | | | | | |
| Purpose of String | Size Hole Drilled | Size Casing Set (In O.D.) | Weight Lbs. / Ft. | Setting Depth | Type of Cement | # Sacks Used | Type and Percent Additives |
| | | | | | | | |
| | | | | | | | |
| | | | | | | | |

| ADDITIONAL CEMENTING / SQUEEZE RECORD | | | | |
|--------------------------------------------------------------------------------------|------------------|----------------|--------------|----------------------------|
| Purpose: | Depth Top Bottom | Type of Cement | # Sacks Used | Type and Percent Additives |
| _____ Perforate _____ Protect Casing _____ Plug Back TD _____ Plug Off Zone | | | | |
| | | | | |

| Shots Per Foot | PERFORATION RECORD - Bridge Plugs Set/Type Specify Footage of Each Interval Perforated | Acid, Fracture, Shot, Cement Squeeze Record <i>(Amount and Kind of Material Used)</i> | Depth |
|----------------|-------------------------------------------------------------------------------------------|------------------------------------------------------------------------------------------|-------|
| | | | |
| | | | |
| | | | |
| | | | |
| | | | |

TUBING RECORD: Size: _____ Set At: _____ Packer At: _____ Liner Run: Yes No

Date of First, Resumed Production, SWD or ENHR. _____ Producing Method:
 Flowing Pumping Gas Lift Other (Explain) _____

| | | | | | |
|-----------------------------------|-----------|---------|-------------|---------------|---------|
| Estimated Production Per 24 Hours | Oil Bbls. | Gas Mcf | Water Bbls. | Gas-Oil Ratio | Gravity |
|-----------------------------------|-----------|---------|-------------|---------------|---------|

| | | |
|--------------------------------------------------------------------------------------------------------------------------------------------------------------------------|------------------------------------------------------------------------------------------------------------------------------------------------------------------------------------------------------------------------------------------------------------------------------|-----------------------------------------------|
| DISPOSITION OF GAS: <input type="checkbox"/> Vented <input type="checkbox"/> Sold <input type="checkbox"/> Used on Lease <i>(If vented, Submit ACO-18.)</i> | METHOD OF COMPLETION: <input type="checkbox"/> Open Hole <input type="checkbox"/> Perf. <input type="checkbox"/> Dually Comp. <input type="checkbox"/> Commingled <i>(Submit ACO-5)</i> <i>(Submit ACO-4)</i> <input type="checkbox"/> Other (Specify) _____ | PRODUCTION INTERVAL: _____ _____ |
|--------------------------------------------------------------------------------------------------------------------------------------------------------------------------|------------------------------------------------------------------------------------------------------------------------------------------------------------------------------------------------------------------------------------------------------------------------------|-----------------------------------------------|

QUALITY OILWELL CEMENTING, INC.

Federal Tax I.D.# 20-2886107

Phone 785-483-2025

Home Office P.O. Box 32 Russell, KS 67665

No. 903

Cell 785-324-1041

| | | | | | | | | | | | | | | | | | | |
|---------------------|--------------|----------|------------|---------------------------------------|----|-------|----|--------|--------|-------|----|-------------|------------------------------------------------------------------------------------------------------------------------------------------|------------------------------------|---------|----------------------------------------------------------------------------------|---------------------|--|
| Date | 7-7-12 | Sec. | 32 | Twp. | 17 | Range | 12 | County | Barton | State | Ks | On Location | | Finish | 8:45 AM | | | |
| Lease | Bieberle | Well No. | 9 | Location Redwing Ks - W side - N Into | | | | | | | | | | | | | | |
| Contractor | Royal Rig #2 | | | | | | | | | | | | Owner | To Quality Oilwell Cementing, Inc. | | | | |
| Type Job | Surface | | | | | | | | | | | | You are hereby requested to rent cementing equipment and furnish cementer and helper to assist owner or contractor to do work as listed. | | | | | |
| Hole Size | 12 1/4" | | T.D. | 715' | | | | | | | | | | | | | | |
| Csg. | 8 3/8" | | Depth | 715' | | | | | | | | | | | | Charge To | John Roy Evans | |
| Tbg. Size | | | | | | | | | | | | | Street | | | | | |
| Tool | | | | | | | | | | | | | City | State | | | | |
| Cement Left in Csg. | 24' | | Shoe Joint | 24' | | | | | | | | | | | | The above was done to satisfaction and supervision of owner agent or contractor. | | |
| Meas Line | | | | | | | | | | | | | Displace | 44 BLS | | Cement Amount Ordered | 325 ex Common 3% CL | |

EQUIPMENT

| | | | | | |
|---------|------|-----|----------|--------|----------|
| Pumptrk | 5 | No. | Cementer | Brett | 2% Gel |
| | | | Helper | | Common |
| Bulktrk | 10 | No. | Driver | Lonnie | Poz. Mix |
| | | | Driver | | |
| Bulktrk | Prm. | No. | Driver | Rick | Gel. |
| | | | Driver | | |

JOB SERVICES & REMARKS

| | | | | | |
|--------------------|-------------------------|--|--|--|--|
| Remarks: | Cement did Circulate. | | | | |
| Rat Hole | Salt | | | | |
| Mouse Hole | Flowseal | | | | |
| Centralizers | Kol-Seal | | | | |
| Baskets | Mud CLR 48 | | | | |
| D/V or Port Collar | CFL-117 or CD110 CAF 38 | | | | |
| | Sand | | | | |
| | Handling | | | | |
| | Mileage | | | | |

FLOAT EQUIPMENT

| | |
|--|------------------|
| | Guide Shoe |
| | Centralizer |
| | Baskets |
| | AFU Inserts |
| | Float Shoe |
| | Latch Down |
| | 1 - Baffle plate |
| | 1 - Rubber plug |
| | Pumptrk Charge |
| | Mileage |

| | |
|--|--------------|
| | Tax |
| | Discount |
| | Total Charge |

X Signature *Wong Bueley*

QUALITY OILWELL CEMENTING, INC.

Federal Tax I.D.# 20-2886107

Phone 785-483-2025
Cell 785-324-1041

Home Office P.O. Box 32 Russell, KS 67665

No. 801

| | | | | | | | | | | | | | | | |
|----------------------------------------------------------------------------------|---------|------|----------|------|----|------------------------------------------------------------------------------------------------------------------------------------------|----|--------|-------|-------|--------|-------------|--|--------|---------|
| Date | 7-12-12 | Sec. | 32 | Twp. | 17 | Range | 12 | County | DACON | State | KANSAS | On Location | | Finish | 5:30 AM |
| Lease | BIBBIE | | Well No. | #9 | | Location | | | | | | | | | |
| Contractor | | | | | | ROYAL DRILLING #2 | | | | | | | | | |
| Type Job | | | | | | PROD STRING | | | | | | | | | |
| Hole Size | | | | | | 7 7/8 | | | | | | | | | |
| Csg. | | | | | | 5 1/2 - 14" USC | | | | | | | | | |
| Tbg. Size | | | | | | | | | | | | | | | |
| Tool | | | | | | | | | | | | | | | |
| Cement Left in Csg. | | | | | | Shoe Joint 17.49 | | | | | | | | | |
| Meas Line | | | | | | Displace 8 1/2 BLS | | | | | | | | | |
| Owner | | | | | | JOHN ROY EVANS OIL | | | | | | | | | |
| To Quality Oilwell Cementing, Inc. | | | | | | You are hereby requested to rent cementing equipment and furnish cementer and helper to assist owner or contractor to do work as listed. | | | | | | | | | |
| Charge To | | | | | | John Roy Evans Oil | | | | | | | | | |
| Street | | | | | | 405 Fourth St. | | | | | | | | | |
| City | | | | | | CLAFLIN | | | | | | | | | |
| State | | | | | | KS, 67525 | | | | | | | | | |
| The above was done to satisfaction and supervision of owner agent or contractor. | | | | | | | | | | | | | | | |
| Cement Amount Ordered | | | | | | 150 cum 10" salt - 5" water | | | | | | | | | |

EQUIPMENT

| | | | | |
|-------------|----------|--------|----------|-----|
| Pumptrk #15 | Cementer | Helper | Common | 150 |
| Bulktrk #8 | Driver | CONY | Poz. Mix | |
| Bulktrk PLW | Driver | CHOC | Gel | |

JOB SERVICES & REMARKS

| | |
|------------------------------|-------------------------|
| Remarks: | Calcium |
| Rat Hole 30 SKK | Hulls |
| Mouse Hole 15 SKK | Salt 13 |
| Centralizers 1, 3, 5, 7, 9 | Flowseal |
| Baskets 1 | Kol-Seal 750L |
| DN or Port Collar | Mud CLR 48 500 gal. |
| DROPPED BALL BECKE (SPECIAL) | CFL-117 or CD110 CAF 38 |
| NUMBERED BUCKETS 42 | Sand 170 |
| NUMBERED BUCKETS 10 | Handling |
| NUMBERED BUCKETS 10 | Mileage |

FLOAT EQUIPMENT

| | | |
|---------------------------------|-------------|----------------------|
| CONNECTER WASHES BY DOWN | Guide Shoe | 1-5 1/2" |
| 4 INSULATED PLUG LANNED & HOLES | Centralizer | 5 5/8" |
| | Baskets | 1-5 1/2" |
| | AFU inserts | 1-5 1/2" |
| | Float Shoe | |
| | Latch Down | |
| | | 1-5 1/2" RUBBER PLUG |

| | | |
|----------------------|----------------|------------------|
| LEFT DRESS @ 800 # | Pumptrk Charge | prod Long String |
| LARDEN PLUG @ 1400 # | Mileage | 18 |

THANK YOU &

| | |
|-----------|--------------|
| Signature | Tax |
| | Discount |
| | Total Charge |



DRILL STEM TEST REPORT

Prepared For: **John Roy Evans Oil Co LLC**

405 4th St Box 385
Claffin KS 67525

ATTN: Jim Musgrove

Bieberle #9

32 17s 12w Barton,KS

Start Date: 2012.07.11 @ 07:25:00

End Date: 2012.07.11 @ 12:20:00

Job Ticket #: 49268 DST #: 1

Trilobite Testing, Inc
PO Box 362 Hays, KS 67601
ph: 785-625-4778 fax: 785-625-5620

Printed: 2012.08.02 @ 09:44:07

John Roy Evans Oil Co LLC
32 17s 12w Barton,KS
Bieberle #9
DST # 1
Arbuckle
2012.07.11



TRILOBITE TESTING, INC.

DRILL STEM TEST REPORT

John Roy Evans Oil Co LLC

32 17s 12w Barton, KS

405 4th St Box 385
Clafin KS 67525

Bieberle #9

Job Ticket: 49268

DST#: 1

ATTN: Jim Musgrove

Test Start: 2012.07.11 @ 07:25:00

GENERAL INFORMATION:

Formation: **Arbuckle**

Deviated: No Whipstock: 1818.00 ft (KB)

Time Tool Opened: 09:06:00

Time Test Ended: 12:20:00

Test Type: Conventional Bottom Hole (Initial)

Tester: Jim Svaty

Unit No: 59

Interval: 3331.00 ft (KB) To 3370.00 ft (KB) (TVD)

Reference Elevations: 1818.00 ft (KB)

Total Depth: 3370.00 ft (KB) (TVD)

1812.00 ft (CF)

Hole Diameter: 7.88 inches Hole Condition: Fair

KB to GR/CF: 6.00 ft

Serial #: 8369 Outside

Press @ Run Depth: 65.89 psig @ 3335.00 ft (KB)

Capacity: 8000.00 psig

Start Date: 2012.07.11

End Date:

2012.07.11

Last Calib.:

2012.07.11

Start Time: 07:25:05

End Time:

12:19:59

Time On Btm:

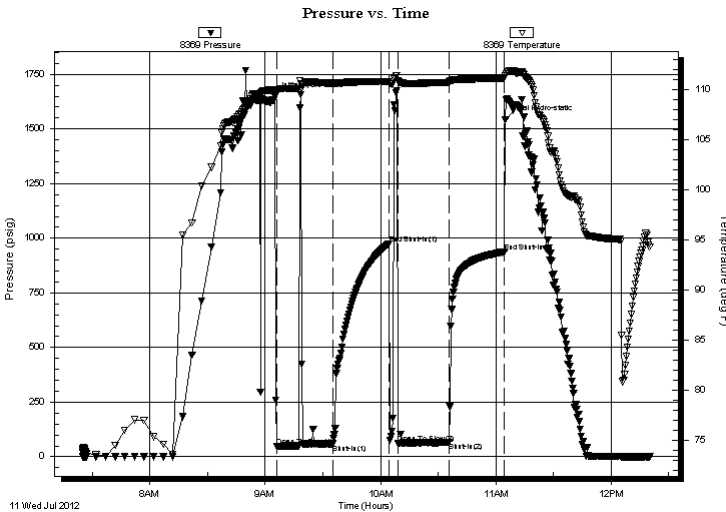
2012.07.11 @ 09:05:00

Time Off Btm:

2012.07.11 @ 11:05:00

TEST COMMENT: 30-IFP- Surface Blow Building to 4 1/2" Blow Died in 12 min Flushed 5" Blow
30-ISIP- No Blow
30-FFP- No Blow Flushed Good Surge No Blow
30-FSIP- No Blow

PRESSURE SUMMARY



| Time (Min.) | Pressure (psig) | Temp (deg F) | Annotation |
|-------------|-----------------|--------------|----------------------|
| 0 | 1646.37 | 110.02 | Initial Hydro-static |
| 1 | 49.13 | 109.77 | Open To Flow (1) |
| 30 | 59.22 | 110.66 | Shut-In(1) |
| 60 | 975.19 | 110.85 | End Shut-In(1) |
| 64 | 61.67 | 110.89 | Open To Flow (2) |
| 91 | 65.89 | 110.78 | Shut-In(2) |
| 120 | 938.56 | 111.17 | End Shut-In(2) |
| 120 | 1543.51 | 111.42 | Final Hydro-static |

Recovery

| Length (ft) | Description | Volume (bbl) |
|-------------|---------------|--------------|
| 2.00 | OCM 40%o 60%m | 0.03 |
| 38.00 | Oil Speck Mud | 0.53 |
| | | |
| | | |
| | | |

Gas Rates

| | Choke (inches) | Pressure (psig) | Gas Rate (Mcf/d) |
|--|----------------|-----------------|------------------|
| | | | |



TRILOBITE TESTING, INC.

DRILL STEM TEST REPORT

John Roy Evans Oil Co LLC

32 17s 12w Barton, KS

405 4th St Box 385
Claflin KS 67525

Bieberle #9

Job Ticket: 49268

DST#: 1

ATTN: Jim Musgrove

Test Start: 2012.07.11 @ 07:25:00

GENERAL INFORMATION:

Formation: **Arbuckle**

Deviated: No Whipstock: 1818.00 ft (KB)

Time Tool Opened: 09:06:00

Time Test Ended: 12:20:00

Test Type: Conventional Bottom Hole (Initial)

Tester: Jim Svaty

Unit No: 59

Interval: 3331.00 ft (KB) To 3370.00 ft (KB) (TVD)

Reference Elevations: 1818.00 ft (KB)

Total Depth: 3370.00 ft (KB) (TVD)

1812.00 ft (CF)

Hole Diameter: 7.88 inches Hole Condition: Fair

KB to GR/CF: 6.00 ft

Serial #: 8319 Inside

Press @ Run Depth: psig @ 3335.00 ft (KB)

Capacity: 8000.00 psig

Start Date: 2012.07.11

End Date:

2012.07.11

Last Calib.:

2012.07.11

Start Time: 07:25:05

End Time:

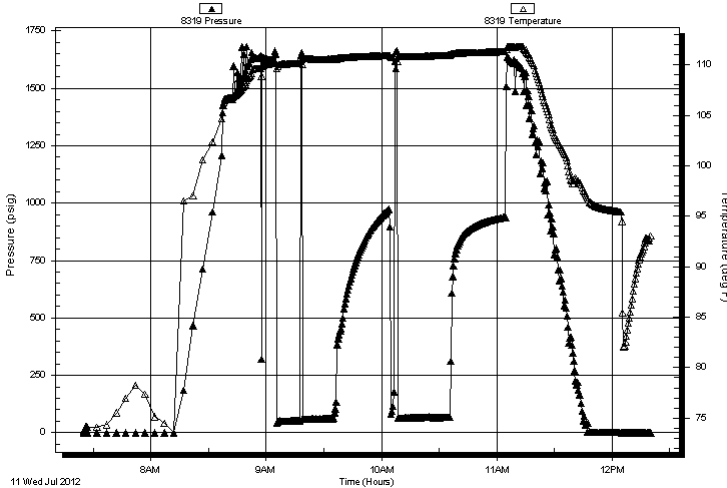
12:19:59

Time On Btm:

Time Off Btm:

TEST COMMENT: 30-IFP- Surface Blow Building to 4 1/2" Blow Died in 12 min Flushed 5" Blow
30-ISIP- No Blow
30-FFP- No Blow Flushed Good Surge No Blow
30-FSIP- No Blow

Pressure vs. Time



PRESSURE SUMMARY

| Time (Min.) | Pressure (psig) | Temp (deg F) | Annotation |
|-------------|-----------------|--------------|------------|
|-------------|-----------------|--------------|------------|

Recovery

| Length (ft) | Description | Volume (bbl) |
|-------------|---------------|--------------|
| 2.00 | OCM 40%o 60%m | 0.03 |
| 38.00 | Oil Speck Mud | 0.53 |
| | | |
| | | |
| | | |

Gas Rates

| | Choke (inches) | Pressure (psig) | Gas Rate (Mcf/d) |
|--|----------------|-----------------|------------------|
|--|----------------|-----------------|------------------|



**TRILOBITE
TESTING, INC.**

DRILL STEM TEST REPORT

TOOL DIAGRAM

John Roy Evans Oil Co LLC

32 17s 12w Barton,KS

405 4th St Box 385
Claflin KS 67525

Bieberle #9

Job Ticket: 49268

DST#: 1

ATTN: Jim Musgrove

Test Start: 2012.07.11 @ 07:25:00

Tool Information

| | | | | |
|---------------------------|--------------------|-----------------------|--------------------------------|------------------------------------|
| Drill Pipe: | Length: 3329.00 ft | Diameter: 3.80 inches | Volume: 46.70 bbl | Tool Weight: 2500.00 lb |
| Heavy Wt. Pipe: | Length: 0.00 ft | Diameter: 2.75 inches | Volume: 0.00 bbl | Weight set on Packer: 25000.00 lb |
| Drill Collar: | Length: 0.00 ft | Diameter: 2.25 inches | Volume: 0.00 bbl | Weight to Pull Loose: 45000.00 lb |
| | | | <u>Total Volume: 46.70 bbl</u> | Tool Chased 0.00 ft |
| Drill Pipe Above KB: | 18.00 ft | | | String Weight: Initial 38000.00 lb |
| Depth to Top Packer: | 3331.00 ft | | | Final 38000.00 lb |
| Depth to Bottom Packer: | ft | | | |
| Interval between Packers: | 39.00 ft | | | |
| Tool Length: | 59.00 ft | | | |
| Number of Packers: | 2 | Diameter: 6.75 inches | | |

Tool Comments:

Tool Description

| Tool Description | Length (ft) | Serial No. | Position | Depth (ft) | Accum. Lengths |
|------------------|-------------|------------|----------|------------|-------------------------------|
| Change Over Sub | 1.00 | | | 3312.00 | |
| Shut In Tool | 5.00 | | | 3317.00 | |
| Hydraulic tool | 5.00 | | | 3322.00 | |
| Packer | 4.00 | | | 3326.00 | 20.00 Bottom Of Top Packer |
| Packer | 5.00 | | | 3331.00 | |
| Stubb | 1.00 | | | 3332.00 | |
| Perforations | 2.00 | | | 3334.00 | |
| Change Over Sub | 1.00 | | | 3335.00 | |
| Recorder | 0.00 | 8319 | Inside | 3335.00 | |
| Recorder | 0.00 | 8369 | Outside | 3335.00 | |
| Blank Spacing | 31.00 | | | 3366.00 | |
| Change Over Sub | 1.00 | | | 3367.00 | |
| Bullnose | 3.00 | | | 3370.00 | 39.00 Bottom Packers & Anchor |

Total Tool Length: 59.00



**TRILOBITE
TESTING, INC.**

DRILL STEM TEST REPORT

FLUID SUMMARY

John Roy Evans Oil Co LLC

32 17s 12w Barton,KS

405 4th St Box 385
Claflin KS 67525

Bieberle #9

Job Ticket: 49268

DST#: 1

ATTN: Jim Musgrove

Test Start: 2012.07.11 @ 07:25:00

Mud and Cushion Information

Mud Type: Gel Chem

Cushion Type:

Oil API:

deg API

Mud Weight: 9.00 lb/gal

Cushion Length:

ft

Water Salinity:

ppm

Viscosity: 54.00 sec/qt

Cushion Volume:

bbf

Water Loss: 8.77 in³

Gas Cushion Type:

Resistivity: ohm.m

Gas Cushion Pressure:

psig

Salinity: 6000.00 ppm

Filter Cake: inches

Recovery Information

Recovery Table

| Length ft | Description | Volume bbf |
|--------------|---------------|---------------|
| 2.00 | OCM 40%o 60%m | 0.028 |
| 38.00 | Oil Speck Mud | 0.533 |

Total Length: 40.00 ft Total Volume: 0.561 bbf

Num Fluid Samples: 0

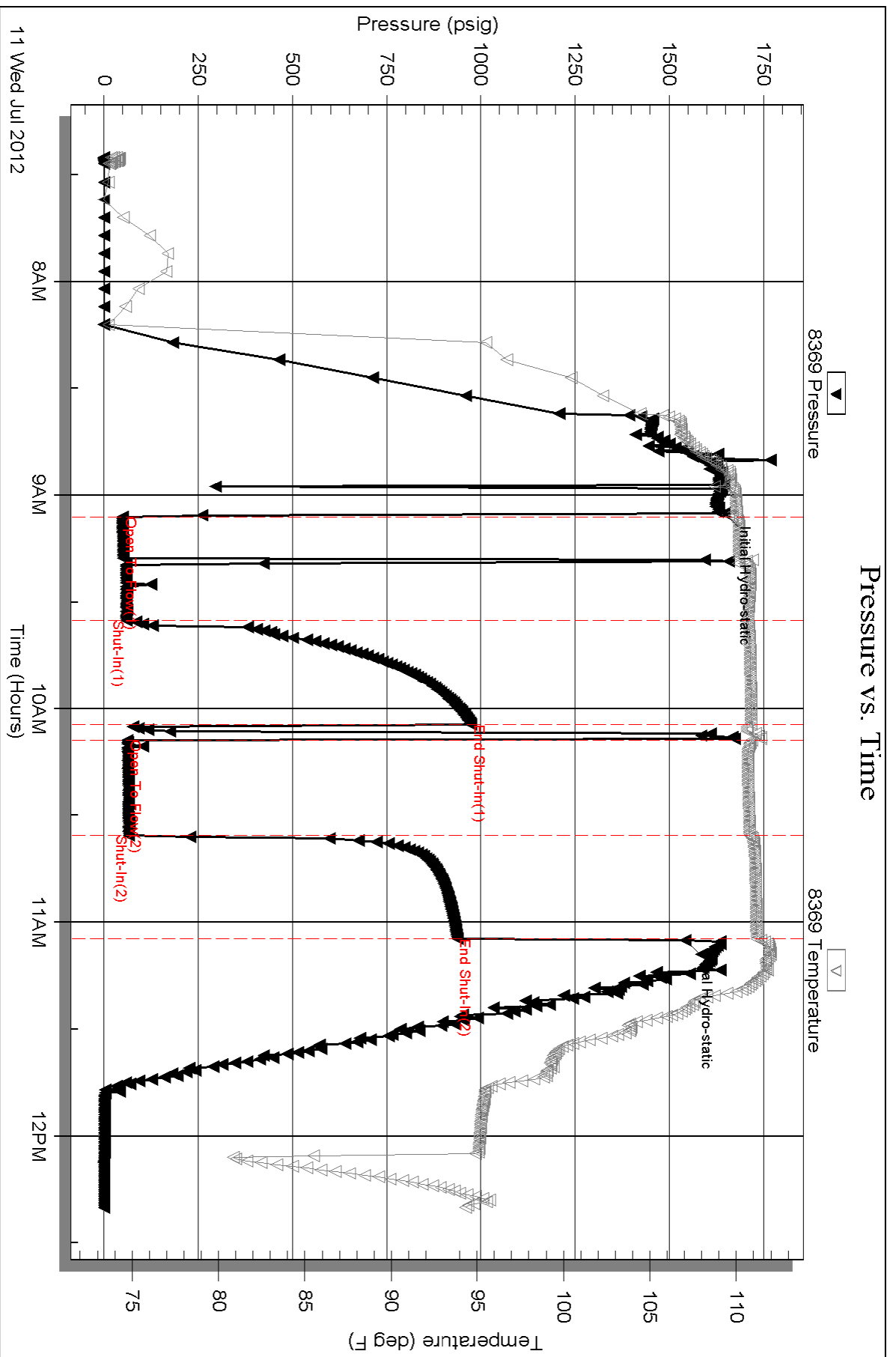
Num Gas Bombs: 0

Serial #:

Laboratory Name:

Laboratory Location:

Recovery Comments:



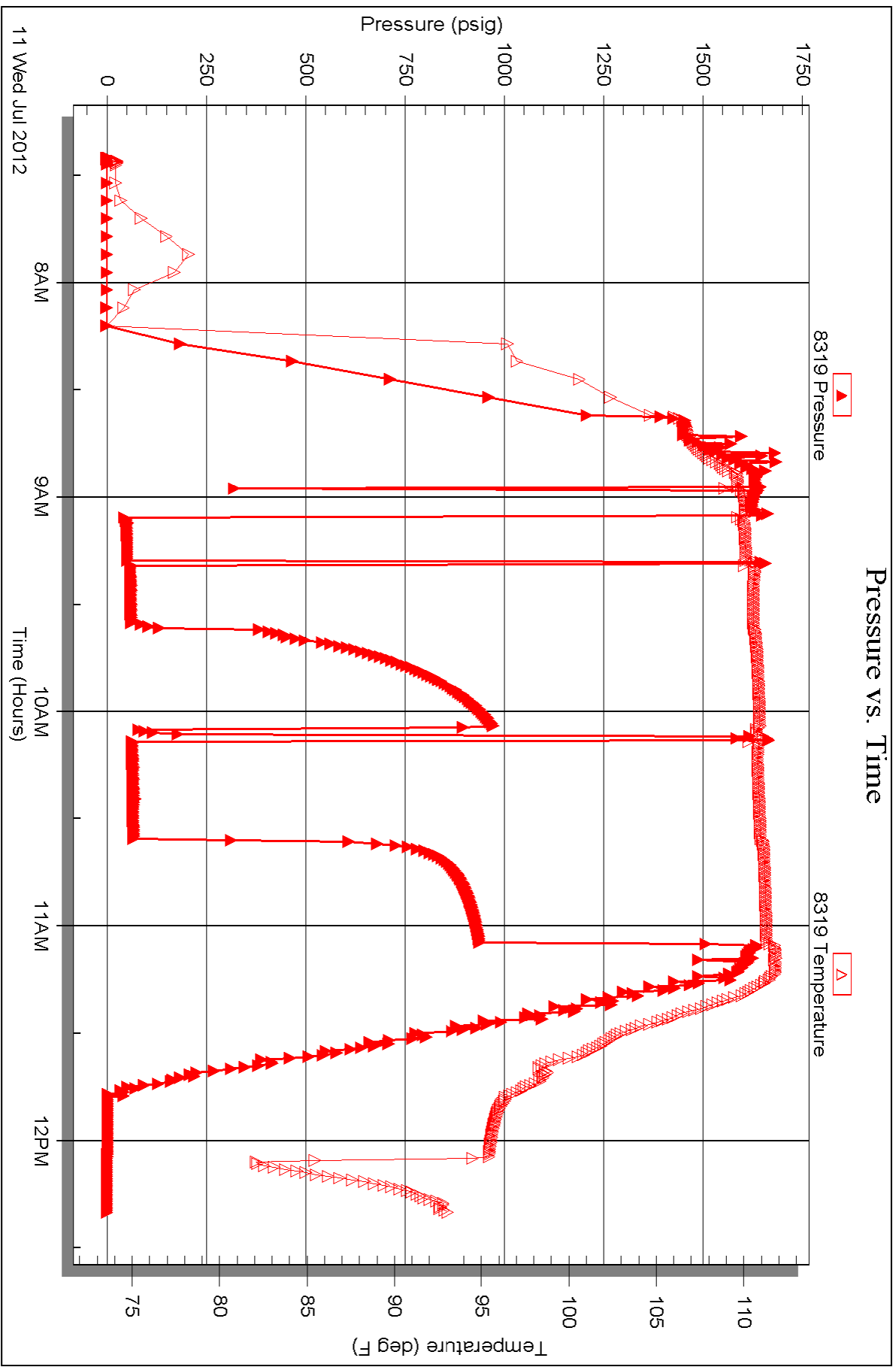
Serial #: 8319

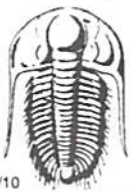
Inside

John Roy Evans Oil Co LLC

Bieberle #9

DST Test Number: 1





TRILOBITE TESTING INC.

P.O. Box 1733 • Hays, Kansas 67601

Test Ticket

NO. 49268

Well Name & No. Bieberle #9 Test No. 1 Date 7-11-12
 Company John Roy EVANS Oil Co, LLC Elevation 1818 KB 1812 GL
 Address 405 4th St Box 385 Claflin Ks, 67525
 Co. Rep / Geo. Jim Musgrove Rig Royal #2
 Location: Sec. 32 Twp. 17⁰⁵ Rge. 12⁰⁴ Co. BARTON State KS

Interval Tested 3331-3370 Zone Tested Arbuckle
 Anchor Length 39' Drill Pipe Run 3329 Mud Wt. 9.4
 Top Packer Depth 3326 Drill Collars Run 0 Vis 54
 Bottom Packer Depth 3331 Wt. Pipe Run 0 WL 8.8
 Total Depth 3370 Chlorides 6000 ppm System LCM TR.
 Blow Description IFP- 4 1/2" Blow Died 12m's Flushed 5in Blow
ISIP- No Blow
FFP- No Blow- Flushed- No Blow
FSIP- No Blow

| Rec | Feet of | %gas | %oil | %water | %mud |
|-----------|----------------------|-----------|------|-----------|------|
| <u>2</u> | <u>OCM</u> | <u>40</u> | | <u>60</u> | |
| <u>38</u> | <u>Oil speck Mud</u> | | | | |
| | | | | | |
| | | | | | |
| | | | | | |

Rec Total 40 BHT 111 Gravity _____ API RW _____ @ _____ °F Chlorides _____ ppm

(A) Initial Hydrostatic 1646 Test 1150 T-On Location 06:50
 (B) First Initial Flow 49 Jars _____ T-Started 07:25
 (C) First Final Flow 59 Safety Joint _____ T-Open 09:05
 (D) Initial Shut-In 975 Circ Sub _____ T-Pulled 11:05
 (E) Second Initial Flow 61 Hourly Standby _____ T-Out 12:20
 (F) Second Final Flow 65 Mileage 112 RT 173.60 Comments _____
 (G) Final Shut-In 938 Sampler _____
 (H) Final Hydrostatic 1543 Straddle _____ Ruined Shale Packer _____
 Shale Packer _____ Ruined Packer _____
 Extra Packer _____ Extra Copies _____
 Initial Open 30 Extra Recorder _____ Sub Total 0
 Initial Shut-In 30 Day Standby _____ Total 1323.60
 Final Flow 30 Accessibility _____ MP/DST Disc't _____
 Final Shut-In 30 Sub Total 1323.60

Approved By _____ Our Representative Jim Musgrove
 Trilobite Testing Inc. shall not be liable for damaged of any kind of the property or personnel of the one for whom a test is made, or for any loss suffered or sustained, directly or indirectly, through the use of its equipment, or its statements or opinion concerning the results of any test, tools lost or damaged in the hole shall be paid for at cost by the party for whom the test is made.



(620) 585-4250
 212 Main St. • P.O. Box 218 • Derby, KS 67535
 1999
 1998

GEOLOGIST'S REPORT

DRILLING TIME AND SAMPLE LOG

COMPANY John Roy Evans Oil Co. LLC
 LEASE Bieberle #9
 FIELD Redwing
 LOCATION Ne-SW-SW-Se (440' FSL, 225' FEL)
 SEC 32 TWP 17 S RCF 12 W
 COUNTY Barton STATE Kansas
 CONTRACTOR Royal Drilling Co. (rig #2)
 SPUD 7-6-2012 COMP 7-12-2012
 RTD 3370 LTD 3365
 MUD UP 2800 TYPE MUD Chemical Dispersed
 SAMPLES SAVED FROM 2900
 DRILLING TIME KEPT FROM 2900
 SAMPLES EXAMINED FROM 2900
 GEOLOGICAL SUPERVISION FROM 2950
 GEOLOGIST ON WELL Jim Musgrove

ELEVATION
 KB 1819
 DF
 GL 1812
 MEASUREMENTS ARE ALL FROM -KB-

SURFACE 85g 1/4" 715
 PRODUCTION 5/2" 11" c
 ELECTRICAL LOGS
 Log Tech. Radiation
 Gamma Log
 Sonic

| FORMATION TOPS | LOC | SAMPLES |
|-------------------------|-------------|--------------|
| <u>anhydrite</u> | <u>710</u> | <u>1109</u> |
| <u>fine anhydrite</u> | <u>734</u> | <u>11078</u> |
| <u>Bieberle</u> | <u>2986</u> | <u>1167</u> |
| <u>Toronto</u> | <u>3005</u> | <u>1186</u> |
| <u>Douglas</u> | <u>3016</u> | <u>1197</u> |
| <u>Brydon lime</u> | <u>3083</u> | <u>1264</u> |
| <u>Hansburg</u> | <u>3095</u> | <u>1276</u> |
| <u>Base Kansas City</u> | <u>3332</u> | <u>1513</u> |
| <u>Aberkane</u> | <u>3350</u> | <u>1531</u> |

MARKS

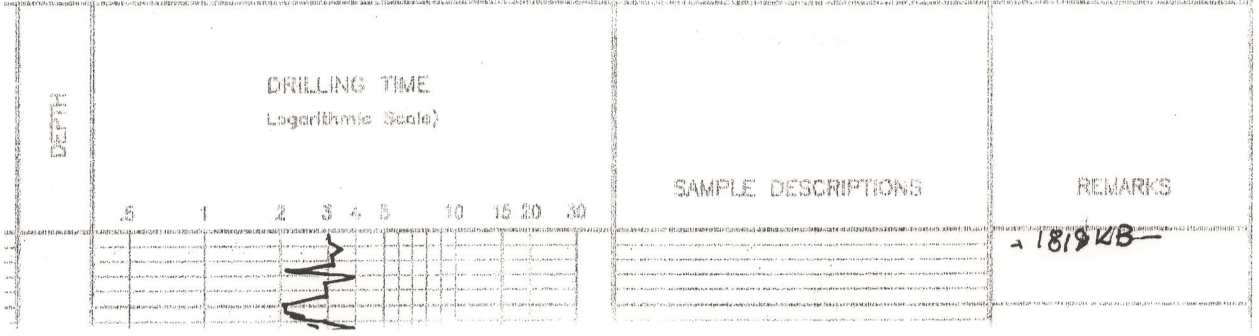
5 1/2" production casing was set & cemented on the Bieberle #9.

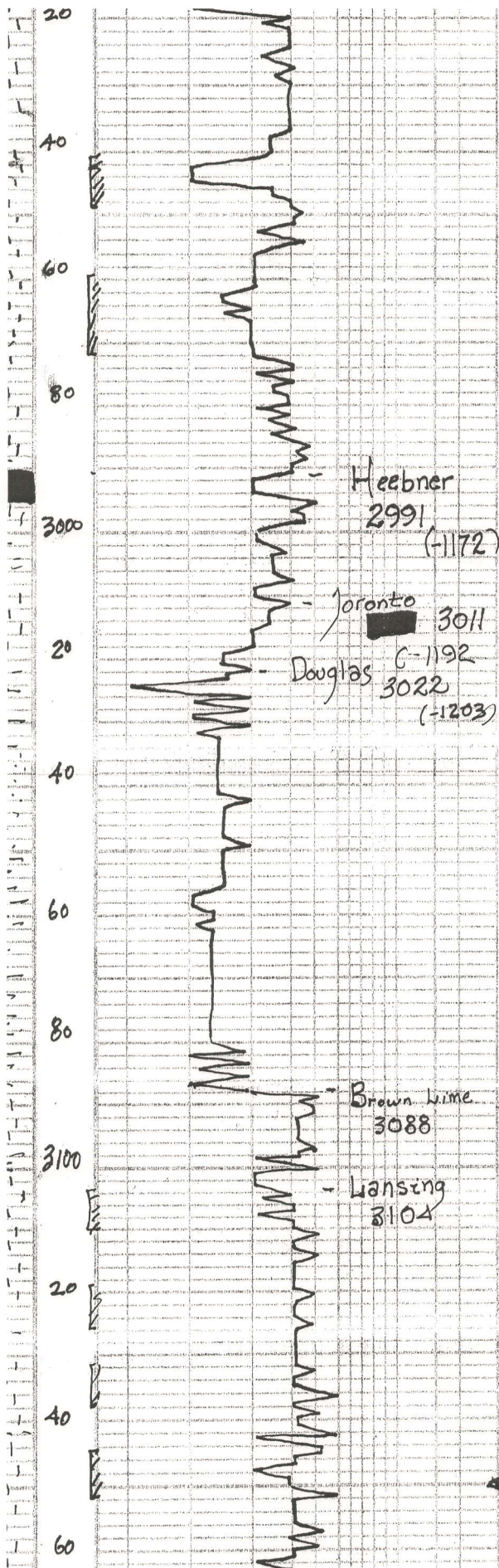


Respectfully submitted,
 James C. Musgrove
 Petroleum Geologist

LEGEND

- Anhydrite
- Salt
- Sandstone
- Shale
- Carbon
- Limestone
- Coal/Lime
- Chert
- Dolomite





ls, gray/wh, ool, cherty,
poor o'ns

} 2

ls, gray/wh (xrh) few
foss, cherty
+ Dr. gray Δ

} 2

~ blk carb. sh

ls, tan, firm, poorly dev'g
ms

} 2

~ v.g. soft silty sh
+ gray, grayish green, vfg,
calc, mica, sand, poor vis'o
ms

} 2

aa

} }

aa

} 1

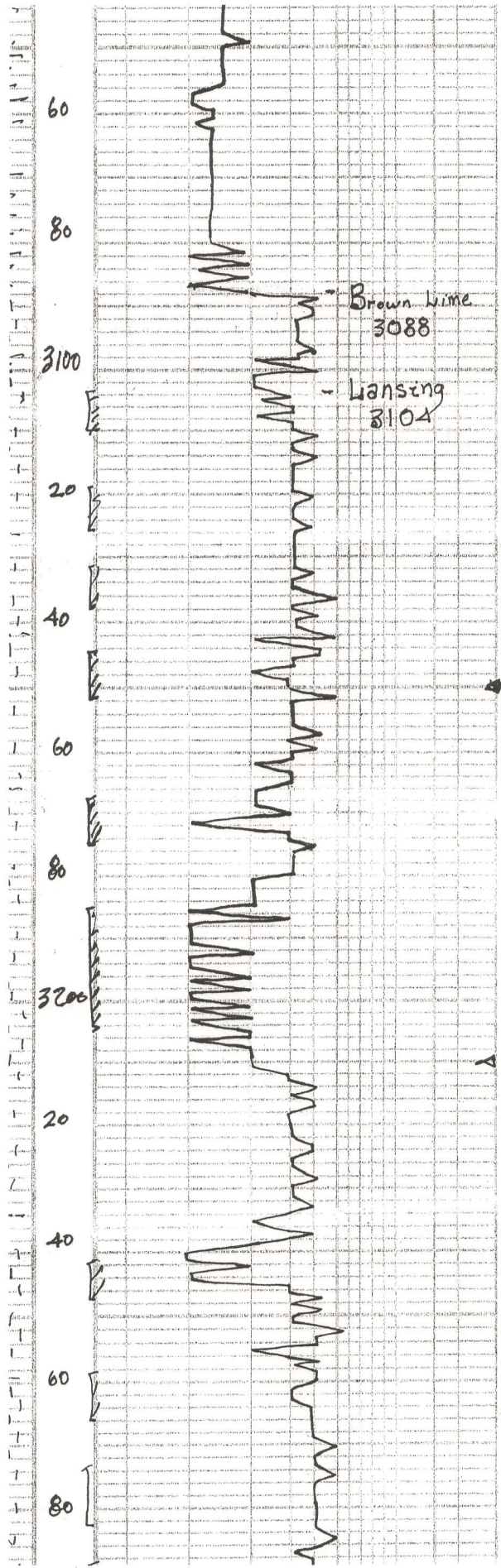
ls, tan, brown, (xrh)
few Δ's, poorly dev'g

ls, wh/crm, (xrh) cherty, poorly
brown stn, Tr. f, no odo

} 1

ls, gray, tan, foss, sub oom -
poor vis'o, dk brown spotty
stn, nfo, no odo

ls, wh/gray, cherty, poor o'ns



32

aa

3 3

aa.

3 1

ls, tan, brown, (x ls)
few sh; poorly dev. n/s

ls, wh/crm, (x ls), cherty, poorly
brown sh, druse, no odor

3 1

ls, gry; tan, foss, sub-oom -
poor vis. sh, dk brown spotty
sh, n/s, no odor

ls, wh/gry; cherty, Poor dev. n/s

ls, wh/gry; (x ls) slightly col;
cherty; br. blk/brown sh
n/s, no odor

ls, tan, gry; wh, oom, good oom
(barren)
+ wh chert

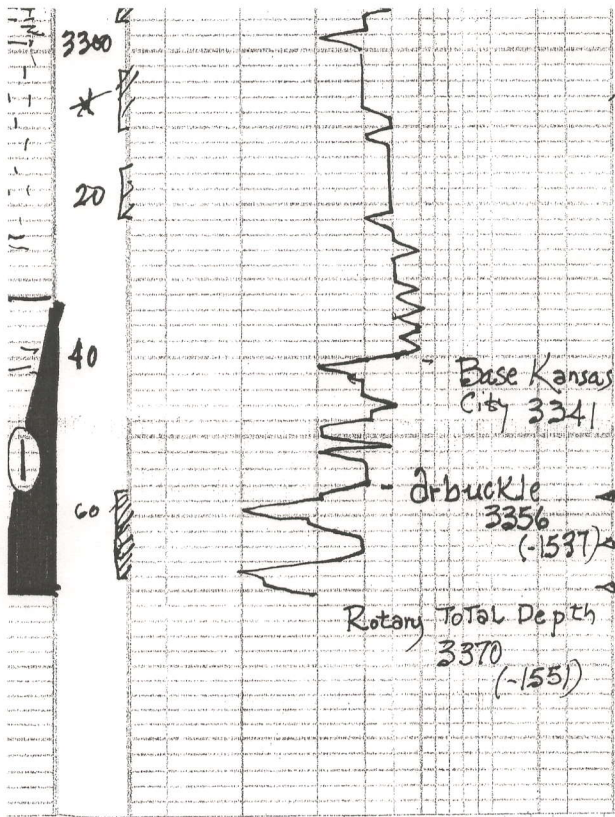
ls, wh/gry; cherty, Poor dev.

3 3

ls, tan/gry; oom, good oom
cherty, Poor dev.
+ wh chert

ls, wh/gry; cherty;
poor dev. n/s

3 2



odl scatt d. brown str / sst,
 Sfo no odor

~ us, wh / gm, foss, shiny
 Poor vis of m

us, gm / tan, d'y. (dse)
 ~ m / gm / green sh

~ dol, tan, sec, scatt. pp
 light brown str, Sfo, no odor

~ odl, sec, Poor str, wk Sfo,
 no odor

DST # 1 3331
 - 3370
 30-30-30-30
 Blow weak
 Rec, 2' oil cut mu
 (40% oil, 60% mud)
 38' oil specked muc
 pressures, ISIP 975
 ISIP 938
 I+P 49.5'
 ISIP 64-65
 HSH
 1646
 -1543



John Roy Evans Oil Company, LLC
P.O. Box 385
Claflin, KS 67525
620-587-3565 Phone
620-587-3522 Fax

BIEBERLE #9 DST #1

3331-3370 30-30-30-30

Blow; Weak

Recovered 2' Oil Cut Mud (40% oil, 60% mud)

38' Oil Specked Mud

ISIP 975 psi

FSIP 938 psi

IFP 49-59 psi

FFP 61-65 psi

HSH 1646-1543 psi