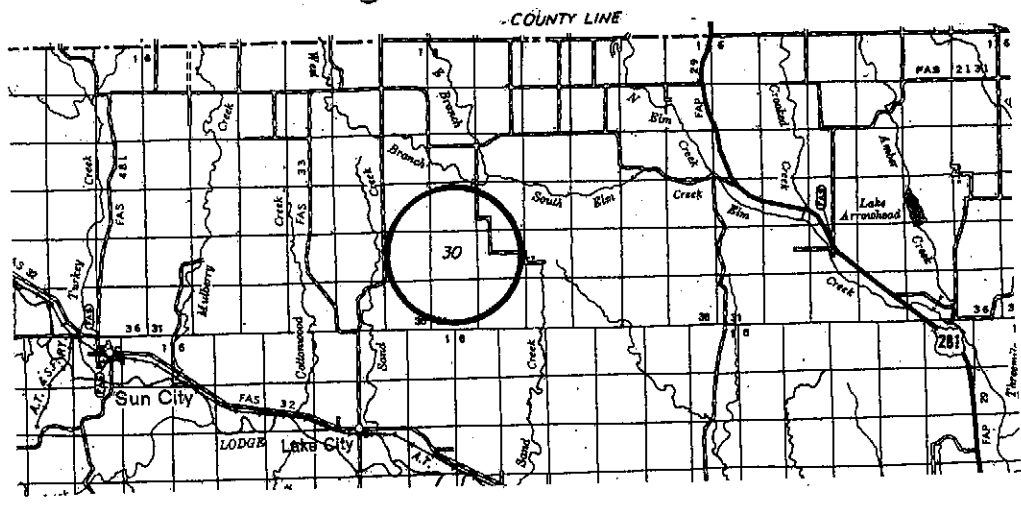
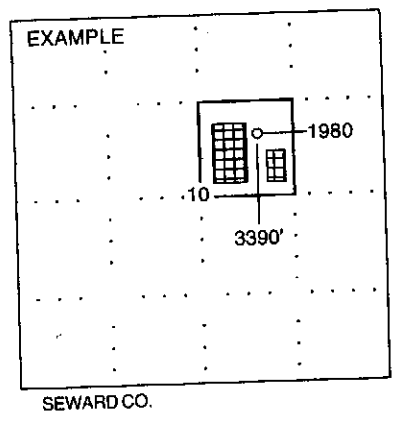
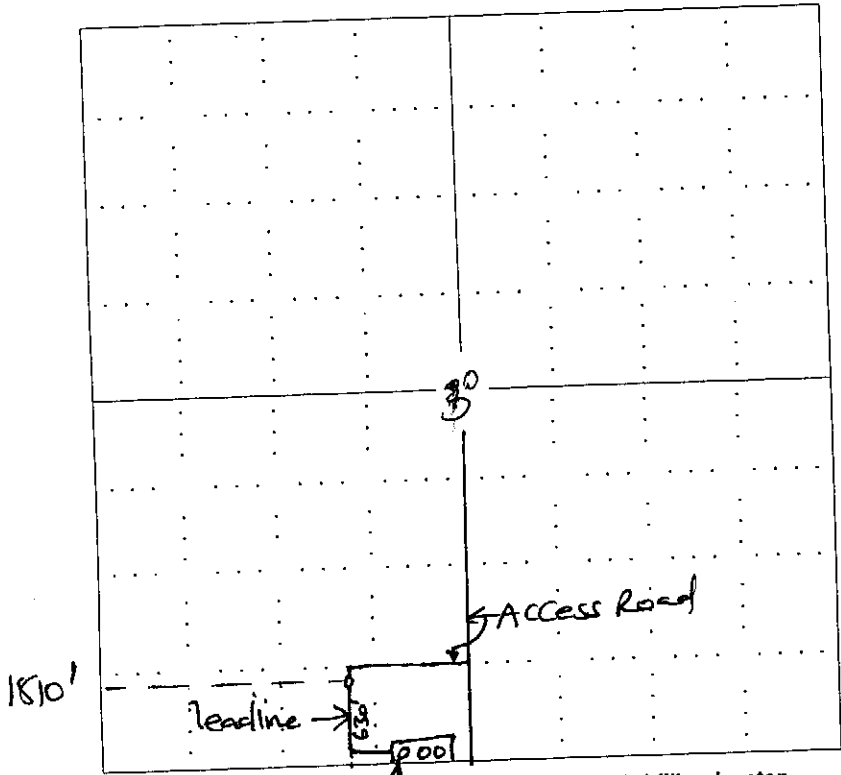


API No. 15 - _____
 Operator: F.G. Holl Company, L.L.C.
 Lease: THOMPSON
 Well Number: 2-30
 Field: SKINNER
 Number of Acres attributable to well: 10
 QTR / QTR / QTR of acreage: C - SE - SW

Location of Well: County: Barber
630 feet from N / S Line of Section
1810 feet from E / W Line of Section
 Sec. 30 Twp. 30 S. R. 13 East West
 Is Section: Regular or Irregular
 If Section is Irregular, locate well from nearest corner boundary.
 Section corner used: NE NW SE SW

PLAT

(Show location of the well and shade attributable acreage for prorated or spaced wells.)
 (Show footage to the nearest lease or unit boundary line.)



* Controlling data is based upon the best maps and photographs available to us and upon a regular section of land containing 640 acres.
 * Approximate section lines were determined using the normal standard of care of oilfield surveyors practicing in the state of Kansas. The section corners, which establish the precise section lines, were not necessarily located, and the exact location of the wellsite location in the section is not guaranteed. Therefore, the operator securing this service and accepting this plot and all other parties relying thereon agree to hold Central Kansas Oilfield Services, Inc., its officers and employees harmless from all losses, costs and expenses and said entities released from any liability from incidental or consequential damages.
 * Elevations derived from National Geodetic Vertical Datum.

Date December 23, 2011