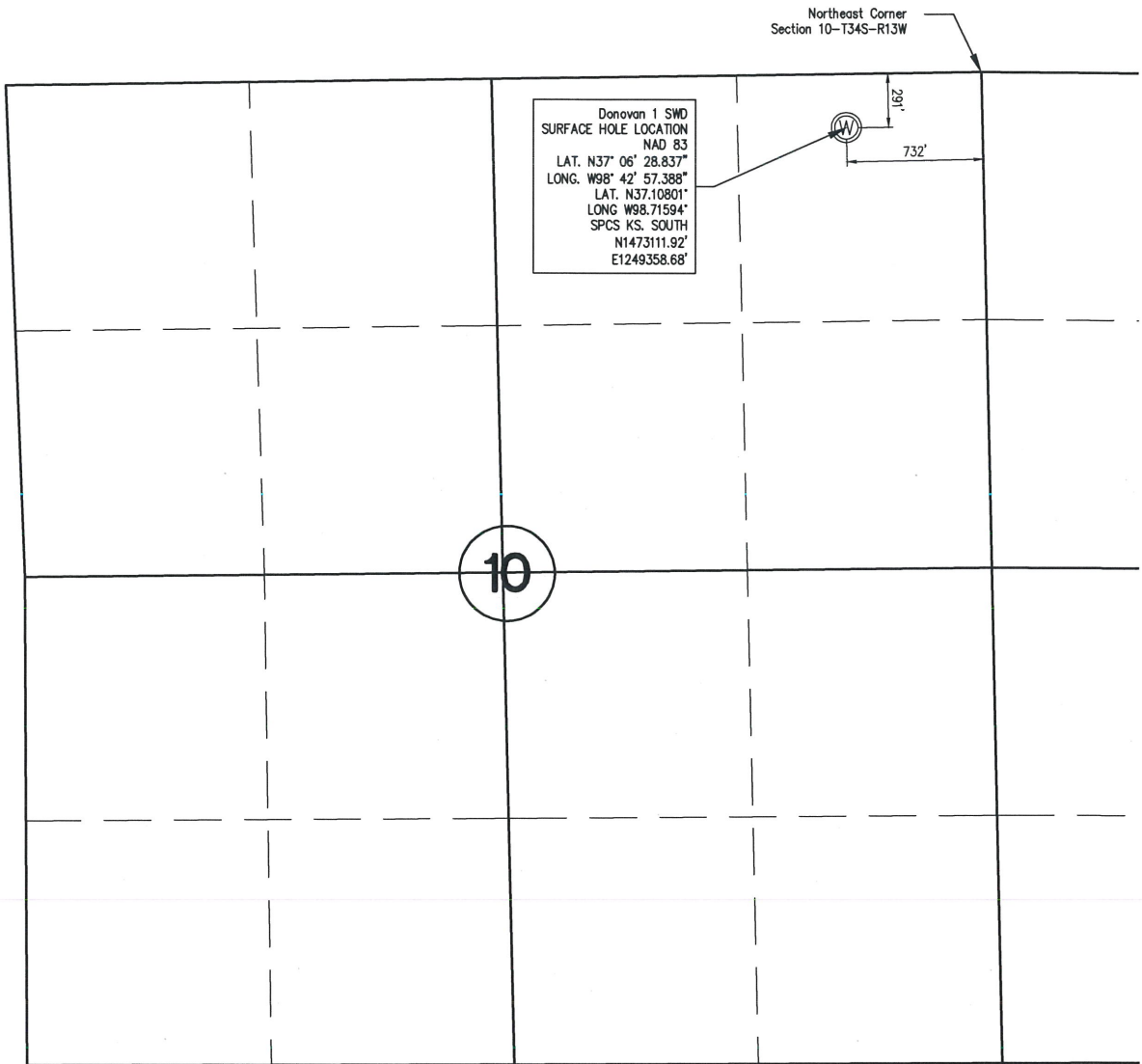


WELL STAKE-OUT SURVEY



Northeast Corner
 Section 10-T34S-R13W

10



Lease Name: Donovan
 Well No. 1-SWD
 Surface El. at SHL stake: 1658 NAVD88
 Well location Co./State: Barber Co. Kansas
 Well location Section: 10-T34S-R13W

Alternate Datums

Horz. Datum NAD27
 Donovan #1 SWD SHL Lat. N37.107985° Long. W98.715573°

SURVEY DATUMS (shown on drawing)
 Horz. Datum NAD83(CORS96)
 Vert. Datum NAVD88(GEOID09)
 Ks. SPCS South Zone (US Feet)

State of Kansas)
)SS
 Sedgwick County)

This is to certify that this map or plat and the survey on which it is based was made by me or under my direct supervision and that to the best of knowledge and belief, this is a true and correct exhibit of said Survey. The wells shown hereon were staked July 3, 2012 at the coordinate location noted.

William P. Fox
 William P. Fox LS 799
 This survey is valid only if print
 bears Surveyor's seal signed in blue ink.



POE & ASSOCIATES, INC.
 CONSULTING ENGINEERS
 5940 E. Central, Suite 200 ■ Wichita, KS 67208-4242
 Phone 316/685-4114 ■ FAX 316/685-4444