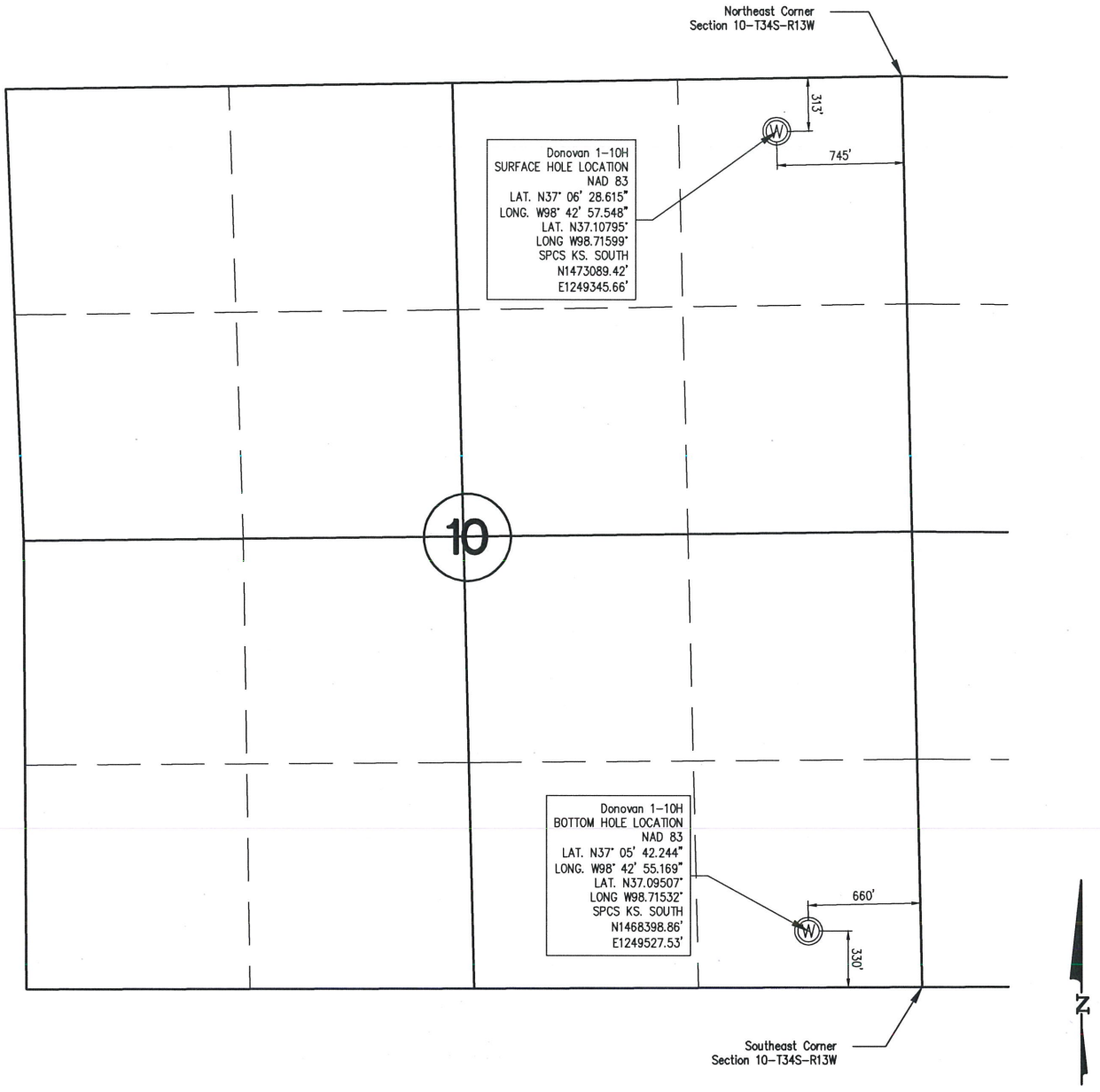


WELL STAKE-OUT SURVEY



Lease Name: Donovan
 Well No. 1-10H
 Surface El. at SHL stake: 1656 NAVD88
 Well location Co./State: Barber Co. Kansas
 Well location Section: 10-T34S-R13W

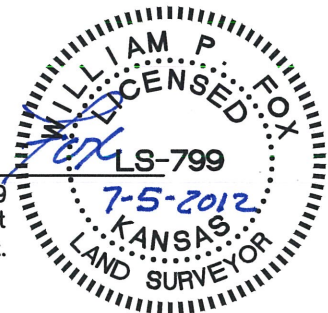
Alternate Datums
 Horz. Datum NAD27
 Donovan #1-10H SHL Lat. N37.107923° Long. W98.715618°

SURVEY DATUMS (shown on drawing)
 Horz. Datum NAD83(CORS96)
 Vert. Datum NAVD88(GEIOD09)
 Ks. SPCS South Zone (US Feet)

State of Kansas)
)SS
 Sedgwick County)

This is to certify that this map or plat and the survey on which it is based was made by me or under my direct supervision and that to the best of knowledge and belief, this is a true and correct exhibit of said Survey. The wells shown hereon were staked July 3, 2012 at the coordinate location noted.

William P. Fox
 William P. Fox LS 799
 This survey is valid only if print bears Surveyor's seal signed in blue ink.



PE POE & ASSOCIATES, INC.
 CONSULTING ENGINEERS
 5940 E. Central, Suite 200 ■ Wichita, KS 67208-4242
 Phone 316/685-4114 ■ FAX 316/685-4444