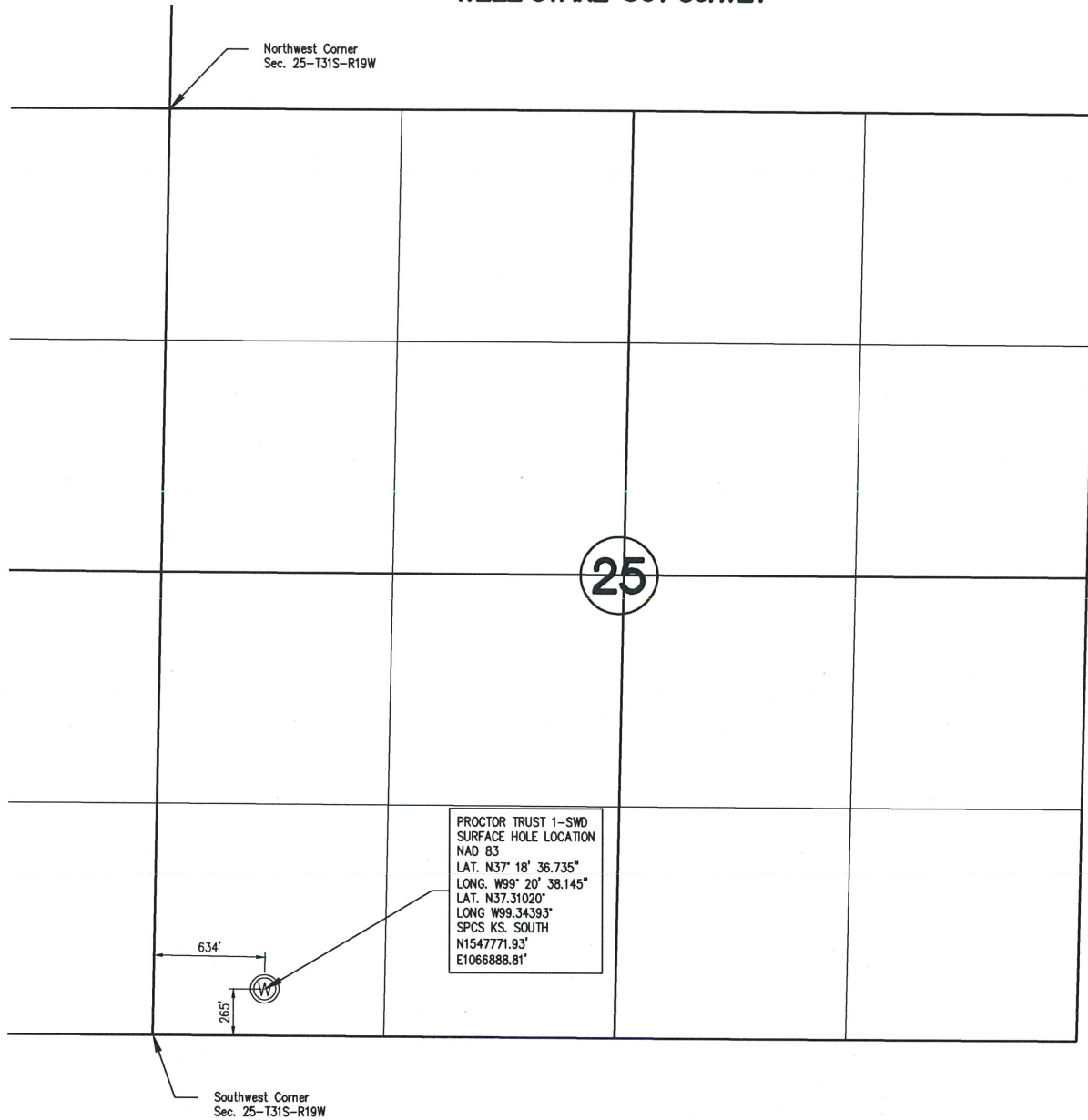


WELL STAKE-OUT SURVEY



Lease Name: Proctor Trust  
Well No. 1-SWD  
Surface El. at SHL stake: 2120 NAVD88  
Well location Co./State: Comanche Co. Kansas  
Well location Section: 25-T31S-R19W

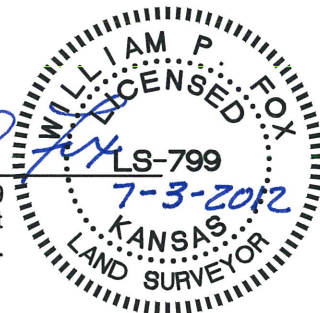
Alternate Datums  
Horz. Datum NAD27  
Proctor Trust #1 SWD Lat. N37.310181° Long. W99.343535°

SURVEY DATUMS (shown on drawing)  
Horz. Datum NAD83(CORS96)  
Vert. Datum NAVD88(GEIOD09)  
Ks. SPCS South Zone (US Feet)

State of Kansas )  
                          )SS  
Sedgwick County )

This is to certify that this map or plat and the survey on which it is based was made by me or under my direct supervision and that to the best of knowledge and belief, this is a true and correct exhibit of said Survey. The wells shown hereon were staked July 2, 2012 at the coordinate location noted.

*William P. Fox*  
William P. Fox LS 799  
This survey is valid only if print  
bears Surveyor's seal signed in blue ink.



POE & ASSOCIATES, INC.  
CONSULTING ENGINEERS  
5940 E. Central, Suite 200 ■ Wichita, KS 67208-4242  
Phone 316/685-4114 ■ FAX 316/685-4444