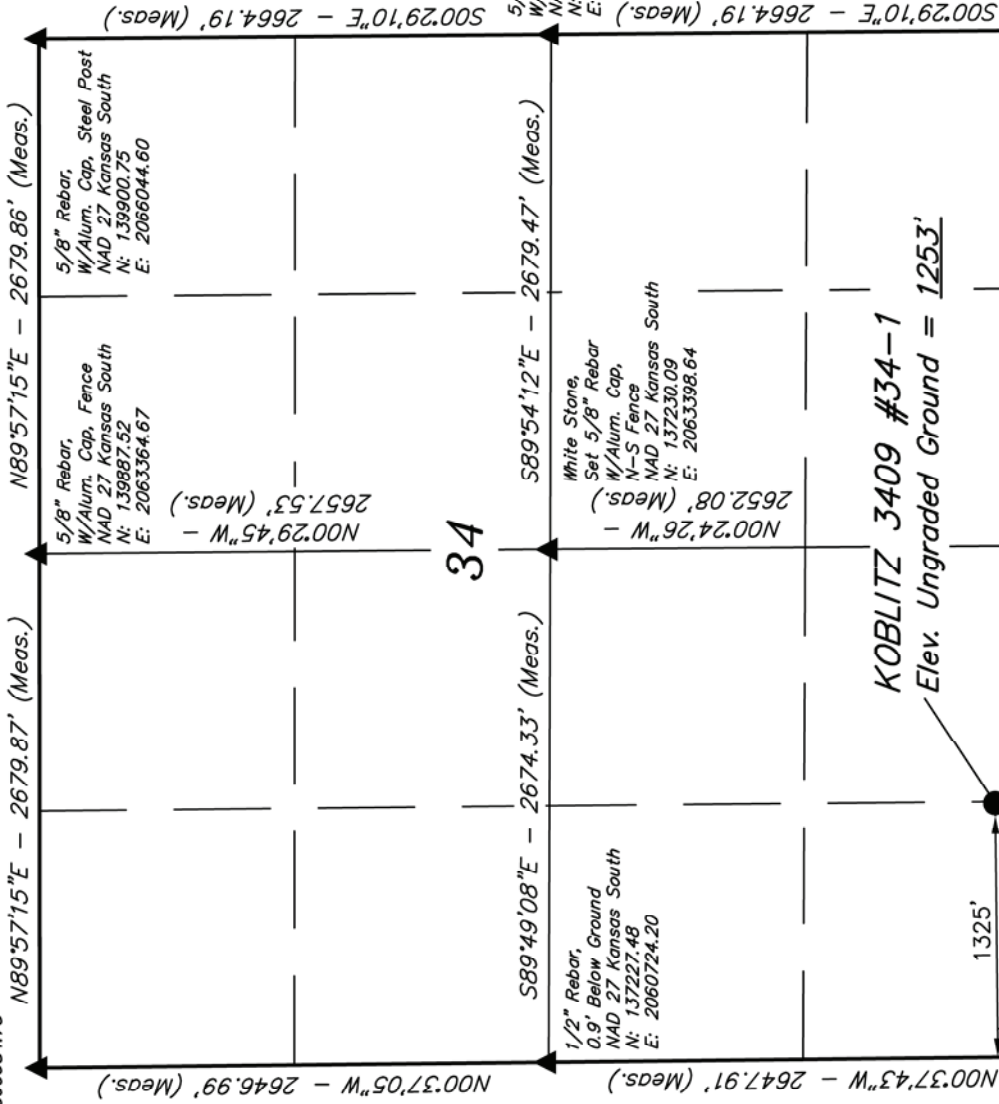


T34S, R9W, 6th P.M.

5/8" Rebar W/2" Alum. Cap, 0.4' Below Ground
 NAD 27 Kansas South
 N: 139874.29
 E: 2060684.73



SGOMI

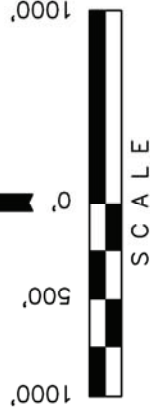
Well location, KOBLITZ 3409 #34-1, located as shown in the SW 1/4 SW 1/4 of Section 34, T34S, R9W, 6th P.M., Harper County, Kansas.

BASIS OF ELEVATION

SPOT ELEVATION LOCATED AT THE NORTHEAST CORNER OF SECTION 22, T33S, R7W, 6th P.M. TAKEN FROM THE ANTHONY, QUADRANGLE, KANSAS, HARPER COUNTY, 7.5 MINUTE QUAD (TOPOGRAPHIC MAP) PUBLISHED BY THE UNITED STATES DEPARTMENT OF THE INTERIOR, GEOLOGICAL SURVEY. SAID ELEVATION IS MARKED AS BEING 1348 FEET.

BASIS OF BEARINGS

BASIS OF BEARINGS IS A G.P.S. OBSERVATION.



SCALE

CERTIFICATE

THIS IS TO CERTIFY THAT THE ABOVE PLAT WAS PREPARED FROM FIELD NOTES OF ACTUAL SURVEYS MADE BY ME OR UNDER MY SUPERVISION AND THAT THE SAME ARE TRUE AND CORRECT TO THE BEST OF MY KNOWLEDGE AND BELIEF.



T34S
 T35S

Bar W/Alum. Cap
 NAD 27 Kansas South
 N: 134572.55
 E: 2066111.81

5/8" Rebar,
 W/Alum. Cap, Fence
 NAD 27 Kansas South
 N: 134578.06
 E: 2063428.43

Found (2) 1/4" Rebar,
 Set 5/8" Rebar W/Alum. Cap
 NAD 27 Kansas South
 N: 134579.75
 E: 2060764.18

UNTAH ENGINEERING & LAND SURVEYING
 85 SOUTH 200 EAST - VERNAL, UTAH 84078
 (435) 789-1017

- LEGEND:**
- = 90° SYMBOL
 - = PROPOSED WELL HEAD.
 - ▲ = SECTION CORNERS LOCATED.

NAD 83 (#34-1 SURFACE LOCATION)
LATITUDE = 37°02'13.22" (37.037006)
LONGITUDE = 98°17'15.60" (98.287667)
NAD 27 (#34-1 SURFACE LOCATION)
LATITUDE = 37°02'13.12" (37.036978)
LONGITUDE = 98°17'14.35" (98.287319)
STATE PLANE NAD 27 (KANSAS SOUTH)
N: 134909.39 E: 2062084.41

SCALE	DATE SURVEYED:	DATE DRAWN:
1" = 1000'	05-23-12	06-25-12
PARTY	REFERENCES	
J.P. B.L. C.A.G.	G.L.O. PLAT	
WEATHER	FILE	
HOT	SGOMI	