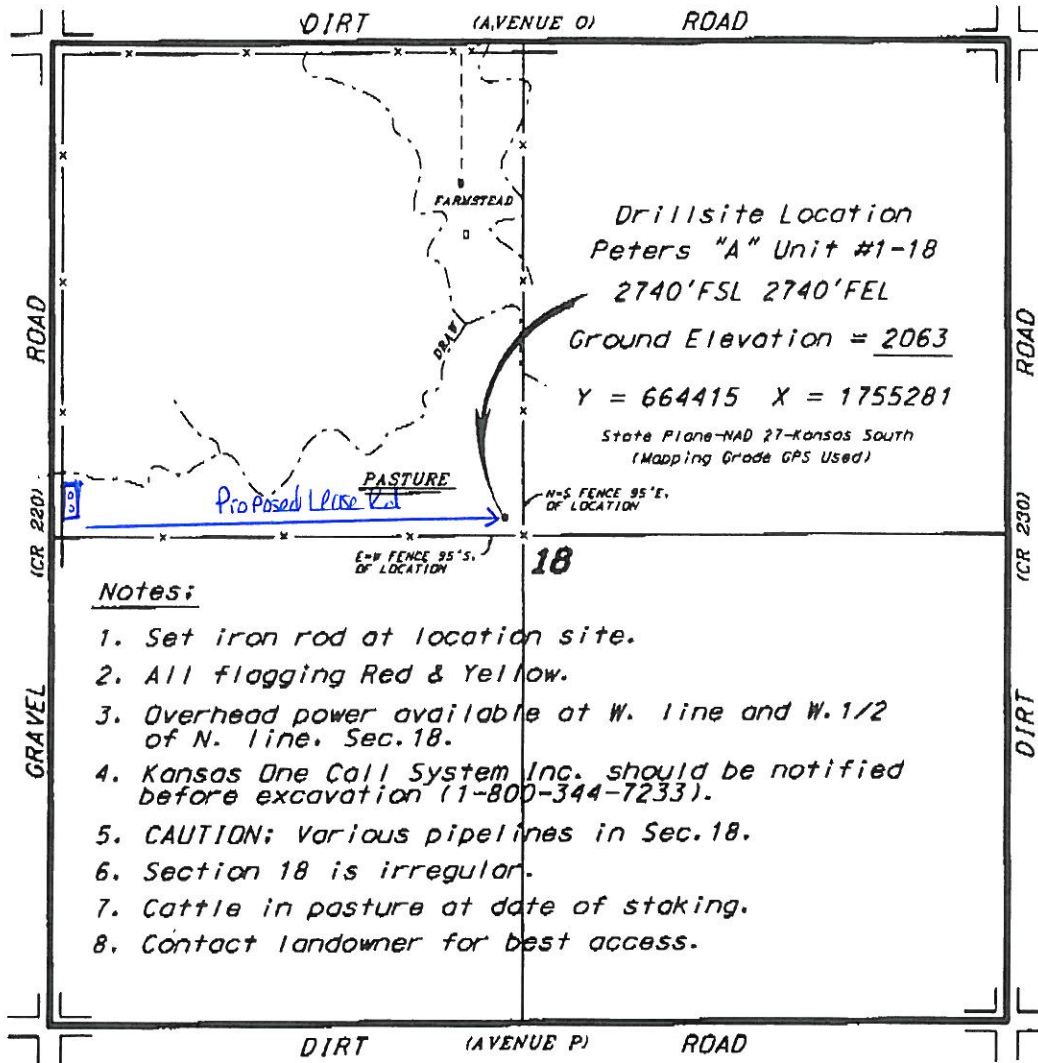


TRANS PACIFIC OIL CORPORATION
PETERS LEASE
NW. 1/4, SECTION 18, T18S, R18W
RUSH COUNTY, KANSAS

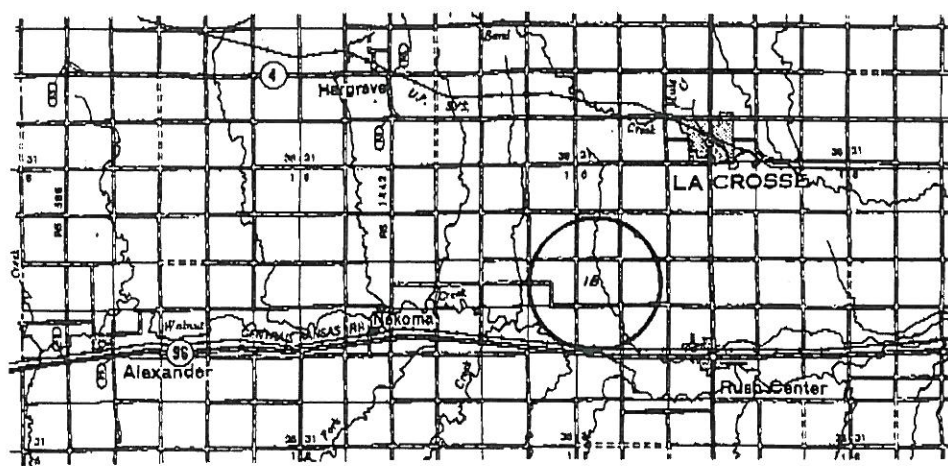


Drillsite Location
 Peters "A" Unit #1-18
 2740'FSL 2740'FEL
 Ground Elevation = 2063
 Y = 664415 X = 1755281
 State Plane-NAD 27-Kansas South
 (Mapping Grade GPS Used)

Notes:

1. Set iron rod at location site.
2. All flagging Red & Yellow.
3. Overhead power available at W. line and W. 1/2 of N. line, Sec. 18.
4. Kansas One Call System Inc. should be notified before excavation (1-800-344-7233).
5. CAUTION; Various pipelines in Sec. 18.
6. Section 18 is irregular.
7. Cattle in pasture at date of staking.
8. Contact landowner for best access.

*Ingress and egress to location as shown on this plot is per usage only and may not be legally opened for public use. Contact landowner, tenant and county road department for access.



• Controlling data is based upon the best maps and photographs available to us and upon a regular section of long certainly 640 acres.
 • Approximate section lines were determined using the normal standard of care of oilfield surveyors practicing in the state of Kansas. The section corners, which establish the precise section lines, were not necessarily located, and the exact location of the drillsite location in the section is not guaranteed. Therefore, the operator assuming this service and occupying this plot and all other parties relying thereon agree to hold Central Kansas Oilfield Services, Inc., its officers and employees harmless from all losses, costs and expenses and said entities released from any liability from incidental or consequential damages.
 • Elevations derived from National Geodetic Vertical Datum.

Date July 3, 2012